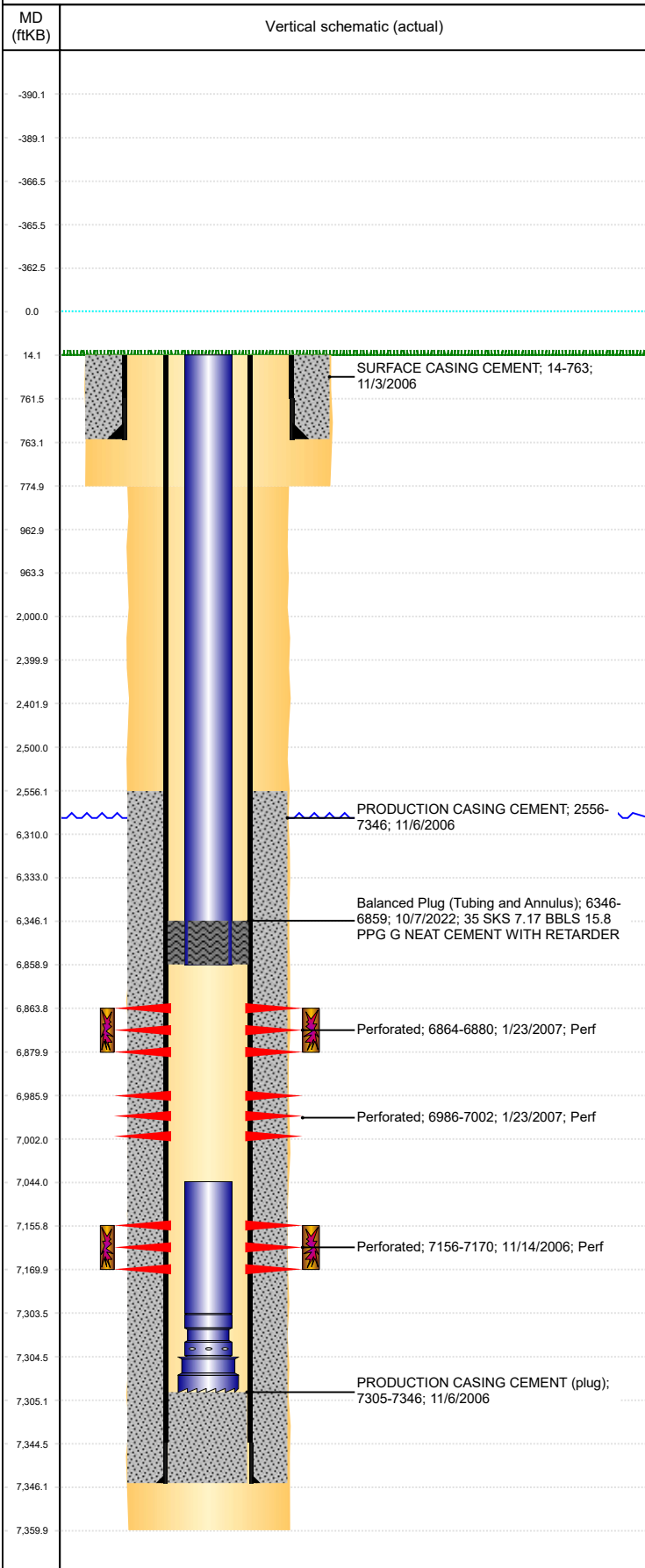




P&A Wellbore For State

Well Name: GARAND USX AB19-11

Land, Original Hole, 1/10/2023 11:31:57 AM



Well Header									
Surface UWI 0512324281		Business Unit Rockies		Gov Auth Dist		Prod Tree Loc Land			
Orig. KB to Gnd (ft) 14.00		Original Spud Date 11/2/2006		Abandon Date		Well Sub-Status TA		High...	
Comment CARTE COMMENTS: FRAC'D INTO 2X'S, LOT OF WATER ON IT, SWAB ONLY WELL RIGHT NOW.									
Surface Location (Congressional)									
Qtr 3 NE	Qtr 4 SW	Section 19	Twshp 7	Twsh...	Range 64	Rng E...	Latitude (°) 40.55651335 8	Longitude (°) -104.5949491	
Wellbore Sections									
Section Des		Hole Size (in)		Act Top (ftKB)		Act Btm (ftKB)			
SURFACE		12 1/4		14.0		775.0			
PRODUCTION		7 7/8		775.0		7,360.0			
Casing Strings									
Csg Des		Run Date		OD (in)	Wt/Len (lb/ft)	Grade	Top Depth (MD) (ftKB)	Set Depth (MD) (ftKB)	
Surface		11/3/2006		8 5/8	24.00	J-55	14	763	
Production Casing		11/5/2006		4 1/2	11.60	M-80	14	7346	
Cement									
Des				Start Date		Top (ftKB)		Btm (ftKB)	
SURFACE CASING CEMENT				11/3/2006		14.0		763.0	
PRODUCTION CASING CEMENT				11/6/2006		2,556.0		7,346.0	
Balanced Plug (Tubing and Annulus)				10/7/2022		6,346.0		6,859.0	
Zone Statuses									
Zone Name		Status Date	Status	Fluid Type	Job			Prod Method	
CODELL		5/18/2010	PR	Water	Abandon Well - Temporary, 9/22/2022 12:00			Flowing	
CODELL		10/7/2022	Closed					Flowing	
NIOBRARA		5/18/2010	PR		Abandon Well - Temporary, 9/22/2022 12:00			Flowing	
NIOBRARA		10/7/2022	Closed					Flowing	
Perforation Data									
Linked Zone		Explosive Type	Entered Shot Total	Top (ftKB)	Btm (ftKB)	Date			
NIOBRARA, Original Hole		A	96	6,864.0	6,880.0	1/23/2007			
NIOBRARA, Original Hole		B	96	6,986.0	7,002.0	1/23/2007			
CODELL, Original Hole			56	7,156.0	7,170.0	11/14/2006			
Stimulation Intervals									
Zone		Start Date		Top (ftKB)		Btm (ftKB)			
NIOBRARA, Original Hole		1/23/2007		6,864.0		6,880.0			
CODELL, Original Hole		1/23/2007		7,156.0		7,170.0			
Other In Hole									
Run Date		Des		Make	OD (in)	Top (ftKB)	Btm (ftKB)		
Logs									
Date		Type				Depth Top (MD) (ftKB)	Btm (ftKB)		
11/6/2006		CBL/CCL/GR				2,650	7,320.0		
11/6/2006		COMPENSATED DENSITY				2,650	7,320.0		
11/6/2006		INDUCTION				763	7,340.0		
9/6/2018		GYRO				14	7,050.0		
Plug Back Total Depths									
Date		Type		Com			PBDT (ftKB)		
11/5/2005		LATCH DOWN COLLAR		LATCH DOWN COLLAR			7,330		
11/6/2005		CEMENT PLUG		DEPTH LOGGER ON CBL			7,305		