



FIGURES

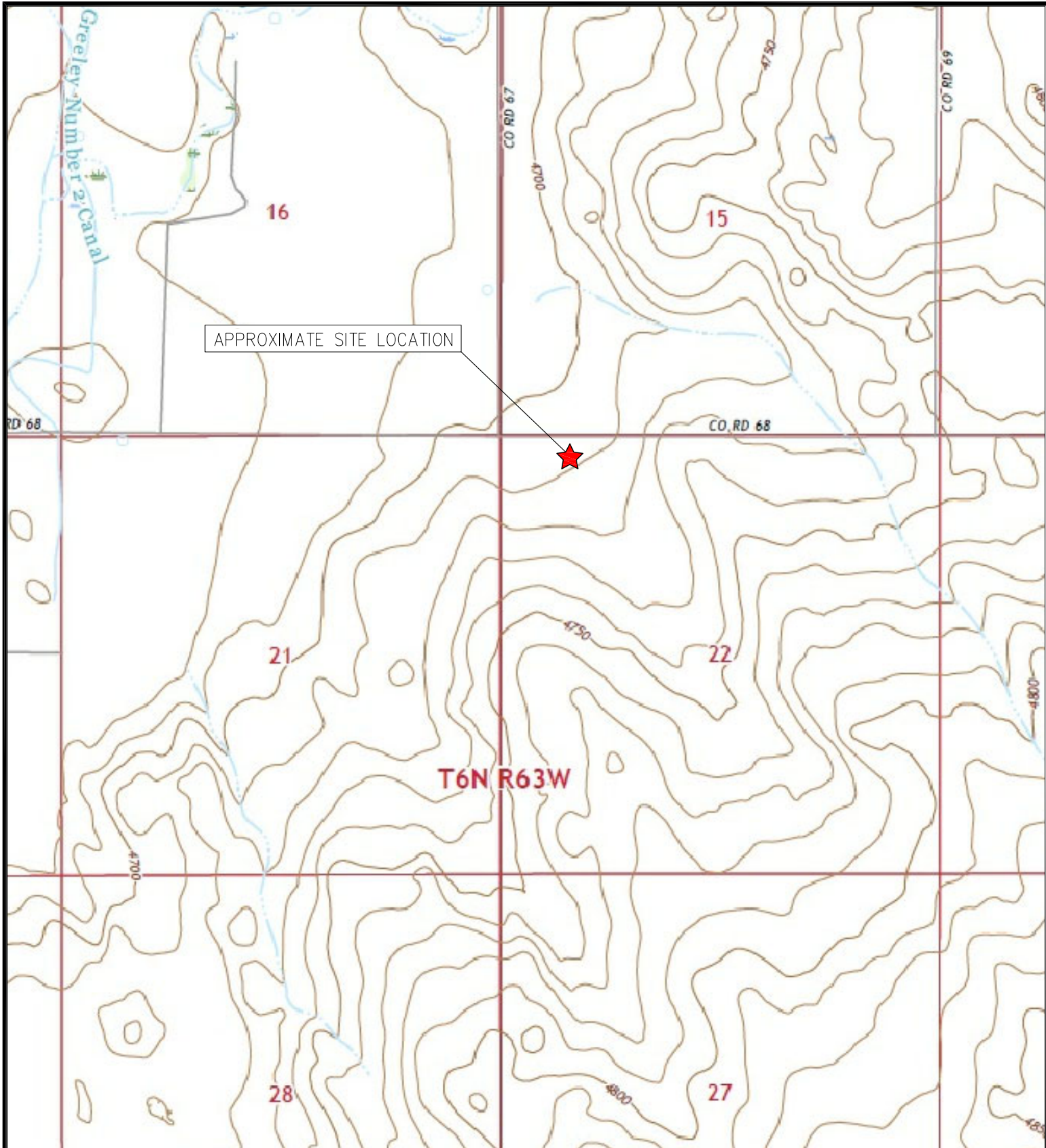
Figure 1: Topographic Site Location Map

Figure 2: Aerial Site Location Map

Figure 3: Initial Soil Analytical Map

Figure 4: Initial Polycyclic Aromatic Hydrocarbons Map

Figure 5: Initial Metals in Soil Map

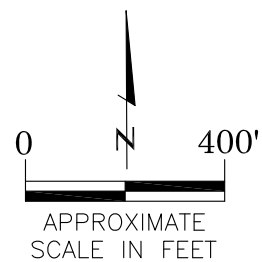


	<p>TOPOGRAPHIC SITE LOCATION MAP WELLS RANCH CENTRAL GATHERING FACILITY SURFACE RELEASE 40.478227 / -104.429364 NW¼ NW¼ SEC.22 T6N R63W 6PM WELD COUNTY, COLORADO SPILL ID 483542</p>	<p>EAGLE ENVIRONMENTAL CONSULTING, INC.</p> <p>8000 W 44th Ave, Wheat Ridge, CO 80033 Ph: 303-433-0479 • F: 303-325-5449</p>
<p>SOURCE: USGS 7.5 MINUTE TOPOGRAPHIC MAP, BARNESVILLE, CO QUADRANGLE 2022</p>		<p>FIGURE 1</p>



LEGEND

- APPROXIMATE FACILITY BOUNDARIES
- APPROXIMATE RELEASE LOCATION



AERIAL SITE LOCATION MAP
 WELLS RANCH CENTRAL GATHERING FACILITY
 SURFACE RELEASE
 40.478227 / -104.429364
 NW¼ NW¼ SEC.22 T6N R63W 6PM
 WELD COUNTY, COLORADO
 SPILL ID 483542

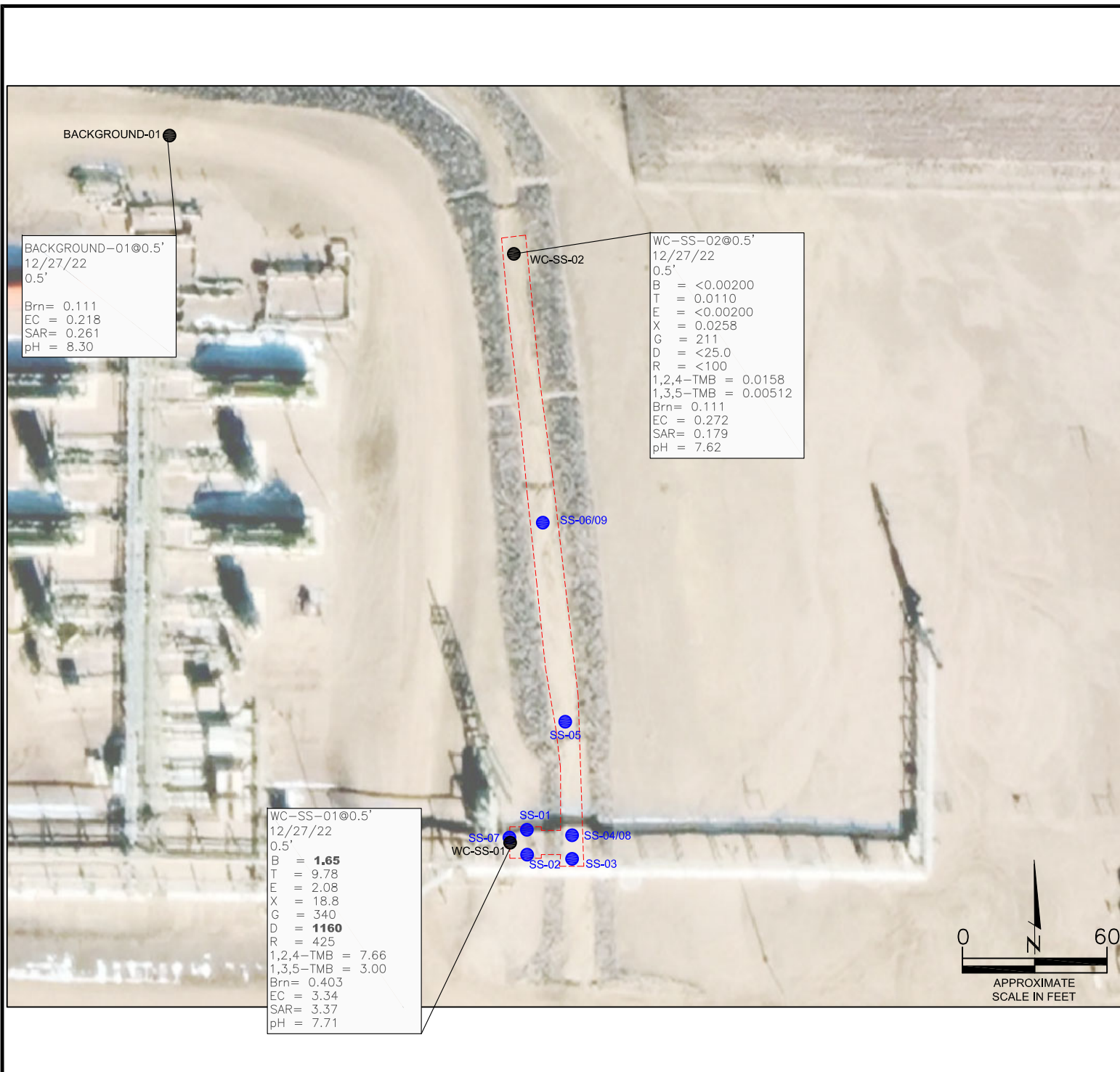
DATE: 12/27/22

FIG. NO.
2

DRAWN BY:
AMN



EAGLE
 ENVIRONMENTAL
 CONSULTING, INC.
 8000 W 44th Ave, Wheat Ridge, CO 80033
 Ph: 303-433-0479 • F: 303-325-5449



LEGEND

- INITIAL ASSESSMENT BOUNDARIES
- APPROXIMATE LOCATION OF SOIL SAMPLES FIELD
SCREENED, ONLY, WITH PHOTOIONIZATION DETECTOR
- APPROXIMATE LOCATION OF SOIL SAMPLES
SUBMITTED FOR LABORATORY ANALYSIS

PARAMETERS

SAMPLE LOCATION
DATE
DEPTH (FEET)
B = BENZENE (mg/kg)
T = TOLUENE (mg/kg)
E = ETHYLBENZENE (mg/kg)
X = TOTAL XYLENES (mg/kg)
G = TPH-GRO (mg/kg)
D = TPH-DRO (mg/kg)
R = TPH-RRO (mg/kg)
1,2,4-TMB = 1,2,4 TRIMETHYLBENZENE (mg/kg)
1,3,5-TMB = 1,3,5 TRIMETHYLBENZENE (mg/kg)
Brn= BORON (mg/L)
EC = SPECIFIC CONDUCTANCE (mmhos/cm)
SAR= SODIUM ADSORPTION RATIO
pH = pH (pH UNITS)

mg/kg = MILLIGRAMS PER KILOGRAM
mg/L = MILLIGRAMS PER LITER
mmhos/cm = MILLIMHOS PER CENTIMETER

TPH-GRO = TOTAL PETROLEUM HYDROCARBONS - GASOLINE
RANGE ORGANICS
TPH-DRO = TOTAL PETROLEUM HYDROCARBONS - DIESEL
RANGE ORGANICS
TPH-RRO = TOTAL PETROLEUM HYDROCARBONS - RESIDUAL
RANGE ORGANICS

NOTES:
VALUES PRESENTED WITH A LESS THAN SYMBOL (<) DID NOT
CONTAIN CONCENTRATIONS AT OR ABOVE LABORATORY
DETECTION LIMITS.

VALUES PRESENTED IN **BOLD** EXCEED COGCC TABLE 915-1
REGULATORY LIMITS.

COGCC = COLORADO OIL AND GAS CONSERVATION
COMMISSION

INITIAL SOIL ANALYTICAL MAP
WELLS RANCH CENTRAL GATHERING FACILITY
SURFACE RELEASE
40.478227 / -104.429364
NW¼ NW¼ SEC.22 T6N R63W 6PM
WELD COUNTY, COLORADO
SPILL ID 483542

DRAWN BY:
BPW

FIG.
NO.
3



EAGLE
ENVIRONMENTAL
CONSULTING, INC.
8000 W 44th Ave, Wheat Ridge, CO 80033
Ph: 303-433-0479 • F: 303-325-5449



LEGEND

- INITIAL ASSESSMENT BOUNDARIES
- SS-02 APPROXIMATE LOCATION OF SOIL SAMPLES FIELD SCREENED, ONLY, WITH PHOTOIONIZATION DETECTOR
- SS-02 APPROXIMATE LOCATION OF SOIL SAMPLES SUBMITTED FOR LABORATORY ANALYSIS

PARAMETERS

SAMPLE LOCATION

DATE SAMPLE COLLECTED

APPROXIMATE DEPTH

POLYCYCLIC AROMATIC HYDROCARBONS (PAHs) (mg/kg)

mg/kg = MILLIGRAMS PER KILOGRAM

ND = NON-DETECT

NOTES:

VALUES PRESENTED WITH A LESS THAN SYMBOL (<) DID NOT CONTAIN CONCENTRATIONS AT OR ABOVE LABORATORY DETECTION LIMITS

VALUES PRESENTED IN **BOLD** CONTAIN CONCENTRATIONS EXCEEDING COGCC TABLE 915-1 REGULATORY LIMITS.

COGCC = COLORADO OIL AND GAS CONSERVATION COMMISSION

INITIAL POLYCYCLIC AROMATIC HYDROCARBONS MAP WELLS RANCH CENTRAL GATHERING FACILITY SURFACE RELEASE

40.478227 / -104.429364

NW¼ NW¼ SEC.22 T6N R63W 6PM

WELD COUNTY, COLORADO

SPILL ID 483542

DRAWN BY:

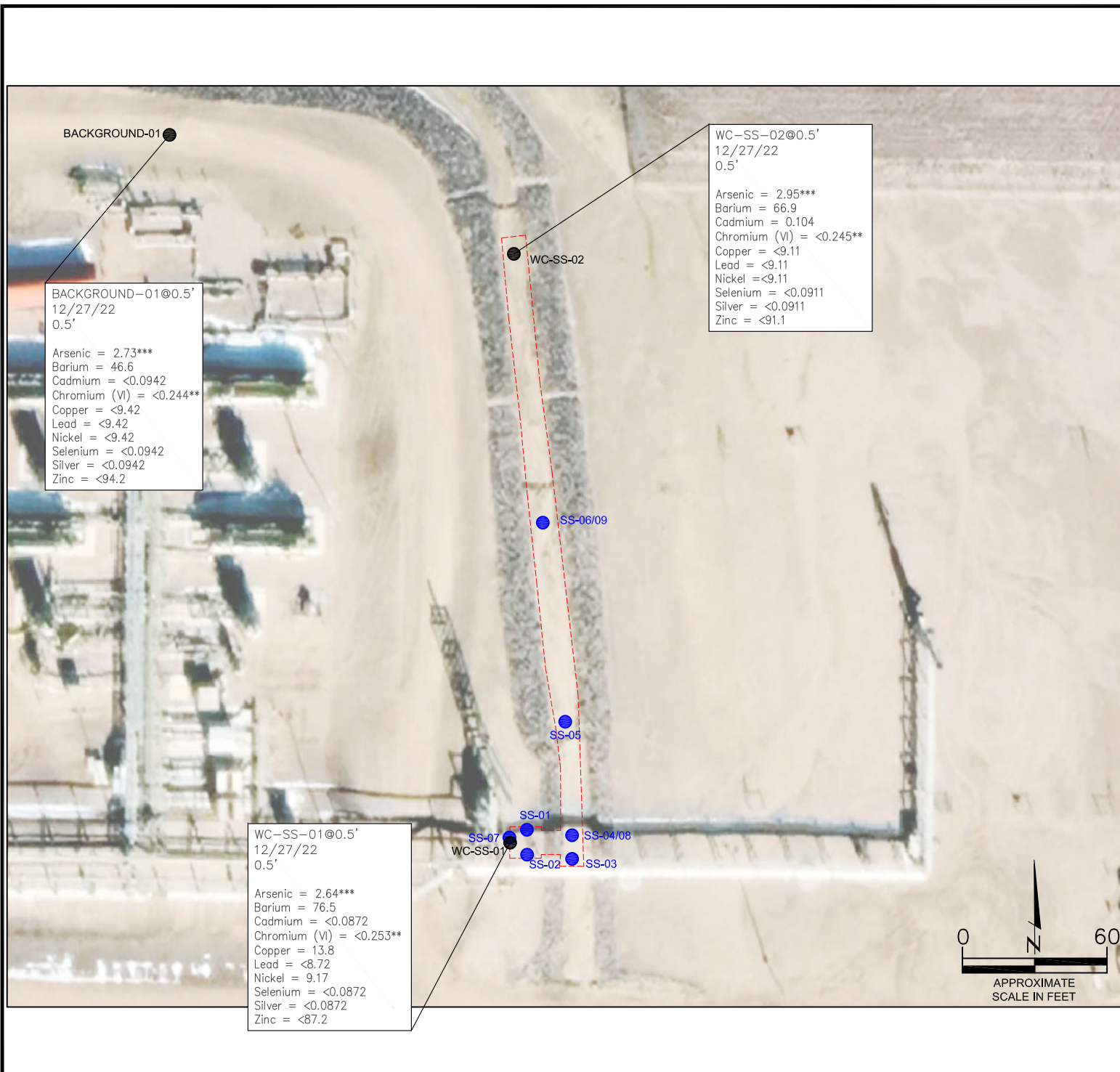
BPW

FIG.
NO.

4



EAGLE
ENVIRONMENTAL
CONSULTING, INC.
8000 W 44th Ave, Wheat Ridge, CO 80033
Ph: 303-433-0479 • F: 303-325-5449



LEGEND

- INITIAL ASSESSMENT BOUNDARIES
- SS-02 APPROXIMATE LOCATION OF SOIL SAMPLES FIELD SCREENED, ONLY, WITH PHOTOIONIZATION DETECTOR
- SS-02 APPROXIMATE LOCATION OF SOIL SAMPLES SUBMITTED FOR LABORATORY ANALYSIS

PARAMETERS

SAMPLE LOCATION
DATE SAMPLE COLLECTED
APPROXIMATE DEPTH
Arsenic = (mg/kg)
Barium = (mg/kg)
Cadmium = (mg/kg)
Chromium (VI) = (mg/kg)
Copper = (mg/kg)
Lead = (mg/kg)
Nickel = (mg/kg)
Selenium = (mg/kg)
Silver = (mg/kg)
Zinc = (mg/kg)

mg/kg = MILLIGRAMS PER KILOGRAM

NOTES:

VALUES PRESENTED WITH A LESS THAN SYMBOL (<) DID NOT CONTAIN CONCENTRATIONS AT/OR ABOVE LABORATORY REPORTING LIMITS AND/OR MINIMUM DETECTION LIMITS.

VALUES PRESENTED IN **BOLD** VALUES CONTAIN CONCENTRATIONS EXCEEDING COGCC TABLE 915-1 VALUES

**ACHIEVABLE PRACTICAL QUANTITATIVE LIMITS FOR HEXAVALENT CHROMIUM (Cr VI) IN SOILS IS IN THE RANGE OF 0.1 TO 1 mg/kg.

***ARSENIC IS NATURALLY OCCURRING IN COLORADO. LOCAL "CLEAN-UP LEVEL" (3.41 mg/kg) is 1.25*BACKGROUND (2.73 mg/kg).

COGCC = COLORADO OIL AND GAS CONSERVATION COMMISSION

INITIAL METALS IN SOIL MAP
WELLS RANCH CENTRAL GATHERING FACILITY
SURFACE RELEASE
40.478227 / -104.429364
NW¼ NW¼ SEC.22 T6N R63W 6PM
WELD COUNTY, COLORADO
SPILL ID 483542

DRAWN BY:
BPW

FIG.
NO.
5



EAGLE
ENVIRONMENTAL
CONSULTING, INC.
8000 W 44th Ave, Wheat Ridge, CO 80033
Ph: 303-433-0479 • F: 303-325-5449



TABLES

Table 1: Photoionization Detector Reading Summary

Table 2: Soil Analytical Results Summary

Table 3: Polycyclic Aromatic Hydrocarbons

Table 4: Metals Analytical Results Summary

TABLE 1
PHOTOIONIZATION DETECTOR READING SUMMARY
WELLS RANCH CENTRAL GATHERING FACILITY
SURFACE RELEASE
40.478227 / -104.429364
NW1/4 NW1/4 SEC.22 T6N R63W 6PM
WELD COUNTY, COLORADO
SPILL ID 483542

Sample Location (Latitude/Longitude)	Date	Approximate Depth (feet)	PID Reading (ppm-v)	Lab Submission (Y/N)
WC-SS-01 @ 0.5' (40.478227 / -104.429349)	12/27/22	0.5	833.7	Y
WC-SS-02 @ 0.5' (40.478891 / -104.429331)	12/27/22	0.5	72.3	Y
SS-01 @ 0.5' (40.478249 / -104.429324)	12/27/22	0.5	7.3	N
SS-02 @ 0.5' (40.478223 / -104.429325)	12/27/22	0.5	16.2	N
SS-03 @ 0.5' (40.478213 / -104.429238)	12/27/22	0.5	20.3	N
SS-04 @ 0.5' (40.478253 / -104.429240)	12/27/22	0.5	231.5	N
SS-05 @ 0.5' (40.478372 / -104.429248)	12/27/22	0.5	56.8	N
SS-06 @ 0.5' (40.478613 / -104.429291)	12/27/22	0.5	185.2	N
SS-07 @ 0.75' (40.478227 / -104.429349)	12/27/22	0.75	323.3	N
SS-08 @ 0.75' (40.478253 / -104.429240)	12/27/22	0.75	94.8	N
SS-09 @ 0.75' (40.478613 / -104.429291)	12/27/22	0.75	128.0	N
Background-01 @ 0.5' (40.479041 / -104.429836)	12/27/22	0.5	7.7	Y
(Y/N) = Yes or No ppm-v = parts per million by volume PID = Photoionization Detector				

TABLE 2
SOIL ANALYTICAL RESULTS SUMMARY
WELLS RANCH CENTRAL GATHERING FACILITY
SURFACE RELEASE
40.478227 / -104.429364
NW1/4 NW1/4 SEC.22 T6N R63W 6PM
WELD COUNTY, COLORADO
SPILL ID 483542

Sample Location (Latitude/Longitude)	Date	Approximate Depth (feet)	PID Reading (ppm-v)	Benzene (mg/kg)	Toluene (mg/kg)	Ethylbenzene (mg/kg)	Total Xylenes (mg/kg)	TPH-GRO (mg/kg)	TPH-DRO (mg/kg)	TPH-RRO (mg/kg)	1,2,4-TMB (mg/kg)	1,3,5-TMB (mg/kg)	Boron (mg/L)	Specific Conductance (mmhos/cm)	pH (pH units)	SAR
COGCC Table 915-1 Residential Screening Levels (mg/kg)				1.20	490	5.8	58	500			30	27	2	<4	6-8.3	<6
WC-SS-01 @ 0.5' (40.478227 / -104.429349)	12/27/22	0.5	833.7	1.65	9.78	2.08	18.8	340	1160	425	7.66	3.00	0.403	3.34	7.71	3.37
WC-SS-02 @ 0.5' (40.478891 / -104.429331)	12/27/22	0.5	72.3	<0.00200	0.00110	<0.00200	0.0258	211	<25.0	<100	0.0158	0.00512	0.111	0.272	7.62	0.179
Background-01 @ 0.5' (40.479041 / -104.429836)	12/27/22	0.5	7.7	NA	NA	NA	NA	NA	NA	NA	NA	NA	0.111	0.218	8.30	0.261
COGCC = Colorado Oil and Gas Conservation Commission								NA - Not Analyzed								
mg/kg = milligrams per kilogram								1,2,4-TMB = 1,2,4-Trimethylbenzene								
mmhos/cm = millimhos per centimeter		TPH-GRO = Total Petroleum Hydrocarbons - Gasoline Range Organics						1,3,5-TMB = 1,3,5-Trimethylbenzene								
PID = Photoionization Detector		TPH-DRO = Total Petroleum Hydrocarbons - Diesel Range Organics														
ppm-v = parts per million by volume		TPH-RRO = Total Petroleum Hydrocarbons - Residual Range Organics														
mg/L = milligrams per liter																
SAR = Sodium Adsorption Ratio																
Notes: Values presented with a less than symbol (<) did not contain concentrations at or above the laboratory reporting limit.																
Values presented in BOLD contained concentrations exceeding COGCC Table 915-1 Regulatory Limits.																

TABLE 3
PAH ANALYTICAL RESULTS SUMMARY
WELLS RANCH CENTRAL GATHERING FACILITY
SURFACE RELEASE
40.478227 / -104.429364
NW1/4 NW1/4 SEC.22 T6N R63W 6PM
WELD COUNTY, COLORADO
SPILL ID 483542

Sample Location (Latitude/Longitude)	Date	Approximate Depth (feet)	PID Reading (ppm- v)	1-Methyl- naphthalene (mg/kg)	2-Methyl-naphthalene (mg/kg)	Acenaphthene (mg/kg)	Anthracene (mg/kg)	Benzo(a)-anthracene (mg/kg)	Benzo(a)- pyrene (mg/kg)	Benzo(b)- fluoranthene (mg/kg)	Benzo(k)- fluoranthene (mg/kg)	Chrysene (mg/kg)	Dibenzo(a,h)- anthracene (mg/kg)	Fluoranthene (mg/kg)	Fluorene (mg/kg)	Indeno(1,2,3- cd)-pyrene (mg/kg)	Naphthalene (mg/kg)	Pyrene (mg/kg)
COGCC Table 915-1 Residential Screening Levels				18	24	360	1,800	1.1	0.11	1.1	11	110	0.11	240	240	1.1	2	180
WC-SS-01 @ 0.5' (40.478227 / -104.429349)	12/27/22	0.5	833.7	0.905	1.64	0.0924	<0.0067	<0.0067	<0.0067	<0.0067	<0.0067	0.0345	<0.0067	<0.0067	0.125	<0.0067	0.447	0.0082
WC-SS-02 @ 0.5' (40.478891 / -104.429331)	12/27/22	0.5	72.3	0.0132	0.0257	0.000997	<0.00067	<0.00067	<0.00067	<0.00067	<0.00067	0.000776	<0.00067	<0.00067	0.00147	<0.00067	0.00678	<0.00067
COGCC = Colorado Oil and Gas Conservation Commission mg/kg = milligrams per kilogram PID = Photoionization Detector ppm-v = parts per million by volume Notes: Values presented with a less than symbol (<) did not contain concentrations at or above the laboratory reporting limit. Values presented in BOLD contained concentrations exceeding COGCC Table 915-1 Regulatory Limits																		

TABLE 4
METALS ANALYTICAL RESULTS SUMMARY
WELLS RANCH CENTRAL GATHERING FACILITY
SURFACE RELEASE
40.478227 / -104.429364
NW1/4 NW1/4 SEC.22 T6N R63W 6PM
WELD COUNTY, COLORADO
SPILL ID 483542

Sample Location (Latitude/Longitude)	Date	Approximate Depth (feet)	Arsenic (mg/kg)	Barium (mg/kg)	Cadmium (mg/kg)	Hexavalent Chromium (mg/kg)	Copper (mg/kg)	Lead (mg/kg)	Nickel (mg/kg)	Selenium (mg/kg)	Silver (mg/kg)	Zinc (mg/kg)
COGCC Table 915-1 Residential Screening Levels			0.68***	15,000	71	0.3**	3,100	400	1,500	390	390	23,000
Local Clean-up Levels			3.41***	--	--	0.1 to 1**	--	--	--	--	--	
WC-SS-01 @ 0.5' (40.478227 / -104.429349)	12/27/22	0.5	2.64***	76.5	<0.0872	<0.253**	13.8	<8.72	9.17	<0.0872	<0.0872	<87.2
WC-SS-02 @ 0.5' (40.478891 / -104.429331)	12/27/22	0.5	2.95***	66.9	0.104	<0.245**	<9.11	<9.11	<9.11	<0.0911	<0.0911	<91.1
Background-01 @ 0.5' (40.479041 / -104.429836)	12/27/22	0.5	2.73***	46.6	<0.0942	<0.244**	<9.42	<9.42	<9.42	<0.0942	<0.0942	<94.2

COGCC = Colorado Oil and Gas Conservation Commission

mg/kg = milligrams per kilogram

Notes: Values presented with a less than symbol (<) did not contain concentrations at or above the laboratory reporting limit or minimum detection levels.

Values presented in **BOLD** contained concentrations exceeding applicable COGCC Table 915-1 Regulatory Limits

**Achievable practical quantitative limits for Hexavalent Chromium in soils is in the range of 0.1 to 1 mg/kg.

***Arsenic is naturally occurring in Colorado. Local clean-up level (3.41 mg/kg) is 1.25*background (2.73 mg/kg)



ATTACHMENT A

Photo Log

Wells Ranch Central Gathering Facility NW¼ NW¼ Sec.22 T6N R63W 6PM Spill ID 483542

Surface Release Assessment

December 2022



EAGLE
ENVIRONMENTAL
CONSULTING, INC.
8000 W 44th Ave, Wheat Ridge, CO 80033
Ph: 303-433-0479 • F: 303-325-5449



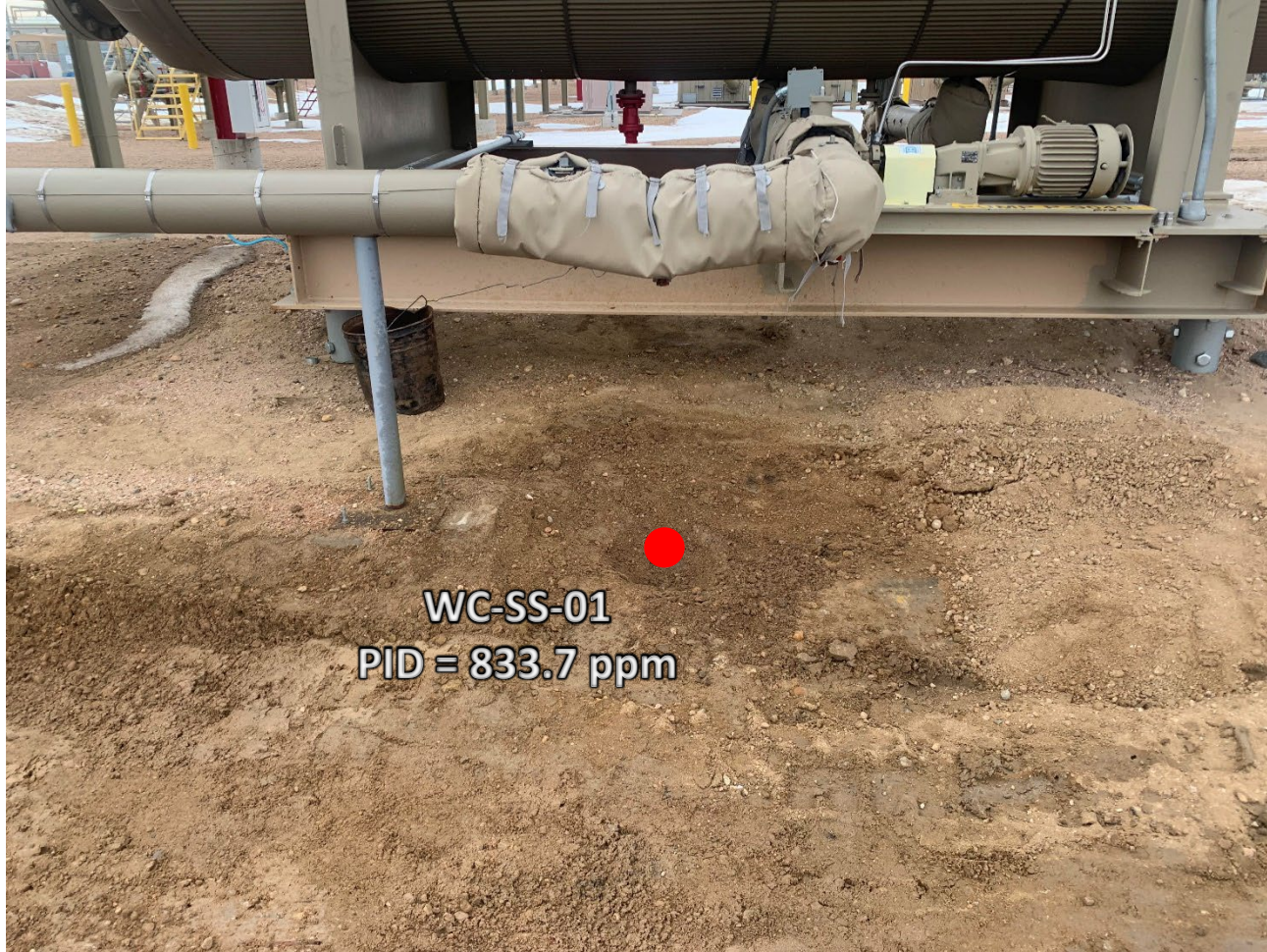
Initial Release – 12/23/22 & 12/24/22



Surface release from bleed valve
-Fluid migration into retention/rip rap

Immediate clean-up response and containment coordinated to address free standing petroleum and odor

Initial Release Assessment – 12/27/22



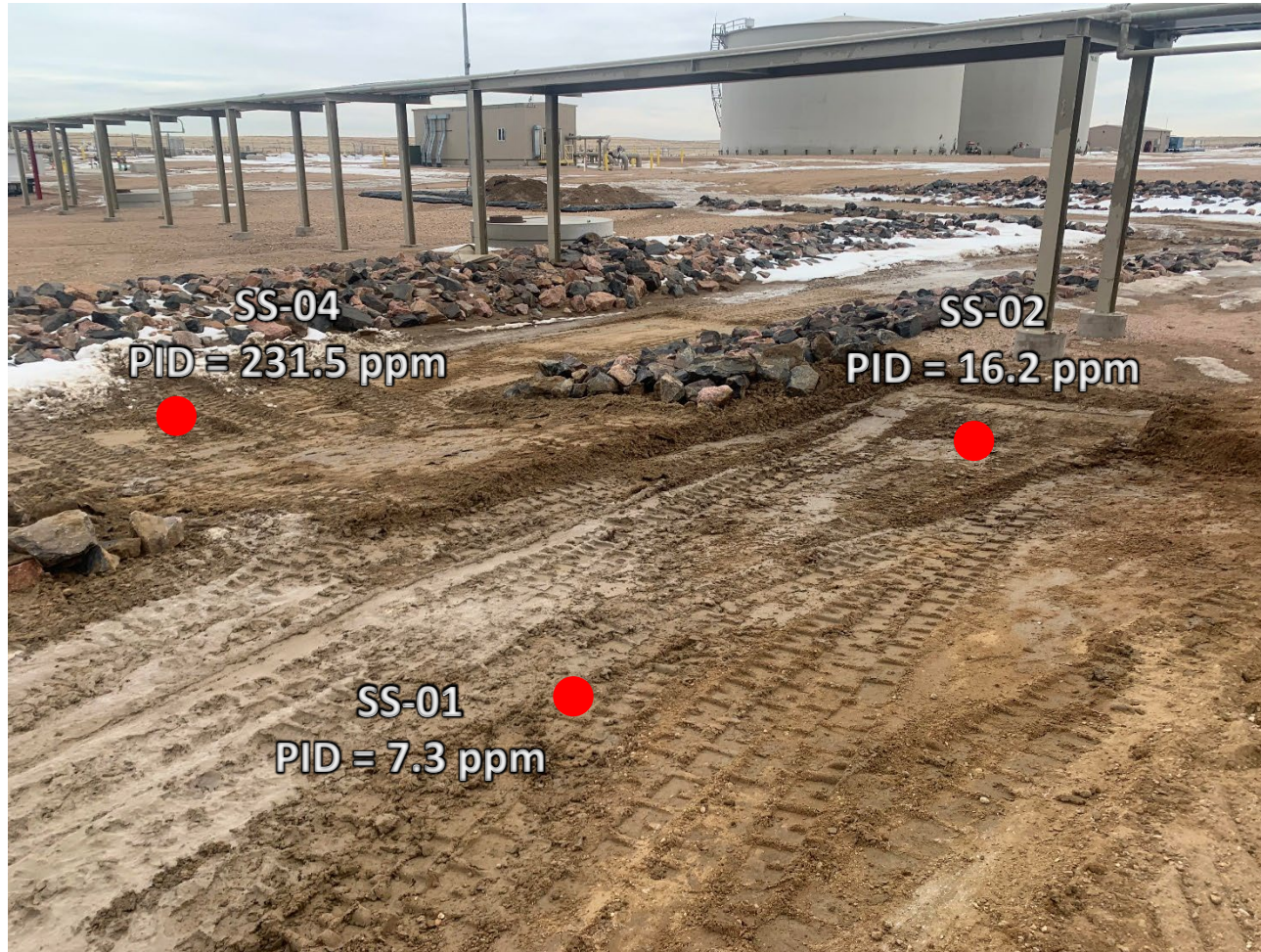
Looking west

Minimal excavation completed adjacent to release area

Total depth ~0.5'

Residual petroleum hydrocarbon staining and odor observed

Initial Release Assessment – 12/27/22



Looking southeast

Minimal excavation completed around surface spill area

Total depth ~0.5'

Residual petroleum hydrocarbon staining and odor observed

Initial Release Assessment – 12/27/22



Looking south

Minimal excavation completed around surface spill area

Total depth ~0.5'

Residual petroleum hydrocarbon staining and odor observed

Initial Release Assessment– 12/27/22



Looking north-northwest

Minimal excavation completed around surface spill area

Total depth ~0.5'

Residual petroleum hydrocarbon staining and odor observed

Initial Release Assessment – 12/27/22



Looking north-northwest

Minimal excavation completed around surface spill area

Total depth ~0.5'

Residual petroleum hydrocarbon staining and odor observed

Initial Release Assessment – 12/27/22



Looking north

Minimal excavation completed around surface spill area

Total depth ~0.5'

Residual petroleum hydrocarbon staining and odor observed

Initial Release Assessment – 12/27/22



Looking southwest

Area around WC-SS-01 over-excavated

Total depth ~0.75'

Residual petroleum hydrocarbon staining and odor observed

Initial Release Assessment – 12/27/22



Looking north

Area around SS-04 over-excavated

Total depth ~0.75'

Residual petroleum hydrocarbon staining and odor observed

Initial Release Assessment – 12/27/22



Looking south

Area around SS-06 over-excavated

Total depth ~0.75'

Residual petroleum hydrocarbon staining and odor observed



ATTACHMENT B

Laboratory Analytical Reports



January 06, 2023

Eagle Environmental Consulting, Inc.

Martin C Eckert III

8000 W 44th Ave

Wheat Ridge CO 80033

Project Name - Noble - Wells Ranch CGF

Project Number - [none]

Attached are your analytical results for Noble - Wells Ranch CGF received by Origins Laboratory, Inc. December 27, 2022. This project is associated with Origins project number Y212572-01.

The analytical results in the following report were analyzed under the guidelines of EPA Methods. These methods are identified as follows; "SW" are defined in SW-846, "EPA" are defined in 40CFR part 136 and "SM" are defined in the most current revision of Standard Methods For the Examination of Water and Wastewater.

The analytical results apply specifically to the samples and analyses specified per the attached Chain of Custody. As such, this report shall not be reproduced except in full, without the written approval of Origin's laboratory.

Unless otherwise noted, the analytical results for all soil samples are reported on a wet weight basis. All analytical analyses were performed under NELAP guidelines unless noted by a data qualifier.

Any holding time exceedances, deviations from the method specifications or deviations from Origins Laboratory's Standard Operating Procedures are outlined in the case narrative.

Thank you for selecting Origins for your analytical needs. Please contact us with any questions concerning this report, or if we can help with anything at all.

Origins Laboratory, Inc.
303.433.1322
o-squad@oelabinc.com



1725 Elk Place, Denver, CO 80211 | Phone: 303.433.1322 | Fax: 303.265.9645

Eagle Environmental Consulting, Inc.

8000 W 44th Ave

Wheat Ridge CO 80033

Martin C Eckert III

Project Number: [none]

Project: Noble - Wells Ranch CGF

CROSS REFERENCE REPORT

Sample ID	Laboratory ID	Matrix	Date Sampled	Date Received
WC-SS-01@0.5'	Y212572-01	Soil	December 27, 2022 14:00	12/27/2022 17:30
WC-SS-02@0.5'	Y212572-02	Soil	December 27, 2022 14:14	12/27/2022 17:30

Origins Laboratory, Inc.



The results in this report apply to the samples analyzed in accordance with the chain of custody document. This analytical report must be reproduced in its entirety.

Eagle Environmental Consulting, Inc.
8000 W 44th Ave
Wheat Ridge CO 80033

Martin C Eckert III
Project Number: [none]
Project: Noble - Wells Ranch CGF

1725 Elk Place | Denver, CO 80211 | Phone: 303.433.1322 | Fax: 303.265.9645

ORIGINS LABORATORY, INC

Client: Eagle Environmental Consulting
Address: 8000 W 44th Ave
Wheat Ridge, CO 80033
Telephone Number: 303-433-0434
Email Address: mce@eagle-env.com

Project Manager: Martin Eckert III
Project Name: Wells Ranch CGF SR
Project Number: 1212572
Samples Collected By: SRM

Requisitioned By: Bruce W. Date: 12/27/12 Time: 1730
Received By: AE Date: 12/27/12 Time: 1730

Temp Received: 12/27/12 Date Results Needed: 12/27/12

Ball to Dan

Sample ID Description	Date Sampled	Time Sampled	# of Containers	Preservative			Matrix			Analysis	Sample Instructions
				HCl	HNO ₃	Other	Groundwater	Soil	Air Summa Canister #		
MC-55-01@0.5'	12/27/12	1400	2	X							EC, S&P, OH by 1
MC-55-02@0.5'	12/27/12	1414	2	X							Substrate probe 2
											MDL's available 3
											4
											5
											6
											7
											8
											9
											10

Turnaround Time:
☒ Same Day
☐ 24 Hr
☐ 48 Hr
☐ 72 Hr
☐ Standard

Analysis: EC, S&P, OH by 1
Substrate probe 2
MDL's available 3
4
5
6
7
8
9
10

www.originslaboratory.com

page 1 of 1

Origins Laboratory, Inc.

Bynon

The results in this report apply to the samples analyzed in accordance with the chain of custody document. This analytical report must be reproduced in its entirety.

Eagle Environmental Consulting, Inc.
8000 W 44th Ave
Wheat Ridge CO 80033

Martin C Eckert III
Project Number: [none]
Project: Noble - Wells Ranch CGF

Origins Laboratory

F-012207-01-R1
Effective Date: 01/09/12

Sample Receipt Checklist

Origins Work Order: Y712572

Client: Eagle

Client Project ID: Wells Ranch CGF

Checklist Completed by: DF

Date/time completed: 12/22/11

Shipped Via: HL
(UPS, FedEx, Hand Delivered, Pick-up, etc.)

Airbill #: 121

Matrix(s) Received: (Check all that apply): ☒ Soil/Solid ☐ Water ☐ Other: _____

Cooler Number/Temperature: 1 / 2.0 °C 1 / _____ °C 1 / _____ °C (Describe)

Thermometer ID: TD04

Requirement Description	Yes	No	N/A	Comments (if any)
If samples require cooling, was the temperature between 0°C to ≤ 6°C ⁽¹⁾ ?	<input checked="" type="checkbox"/>			
Is there ice present (document if blue ice is used)	<input checked="" type="checkbox"/>			
Are custody seals present on cooler? (if so, document in comments if they are signed and dated, broken or intact)		<input checked="" type="checkbox"/>		
Are custody seals present on each sample container? (if so, document in comments if they are signed and dated, broken or intact)		<input checked="" type="checkbox"/>		
Were all samples received intact ⁽¹⁾ ?	<input checked="" type="checkbox"/>			
Was adequate sample volume provided ⁽¹⁾ ?	<input checked="" type="checkbox"/>			
Are short holding time analytes or samples with HTs due within 48 hours present ⁽¹⁾ ?		<input checked="" type="checkbox"/>		
Is a chain-of-custody (COC) present and filled out completely ⁽¹⁾ ?	<input checked="" type="checkbox"/>			
Does the COC agree with the number and type of sample bottles received ⁽¹⁾ ?	<input checked="" type="checkbox"/>			
Do the sample IDs on the bottle labels match the COC ⁽¹⁾ ?	<input checked="" type="checkbox"/>			
Is the COC properly relinquished by the client with date and time recorded ⁽¹⁾ ?	<input checked="" type="checkbox"/>			
For volatiles in water — is there headspace (> ¼ inch bubble) present? If yes, contact client and note in narrative.			<input checked="" type="checkbox"/>	
Are samples preserved that require preservation and was it checked ⁽¹⁾ ? (note ID of confirmation instrument used in comments) / (preservation is not confirmed for sub-contracted analyses in order to insure sample integrity)/(pH < 2 for samples preserved with HNO ₃ , HCL, H ₂ SO ₄) / (pH > 10 for samples preserved with NaAsO ₂ +NaOH, ZnAc+NaOH)			<input checked="" type="checkbox"/>	
Additional Comments (if any):				

⁽¹⁾If NO, then contact the client before proceeding with analysis and note date/time and person contacted as well as the corrective action to in the additional comments (above) and the case narrative.

Reviewed by (Project Manager)

Date/Time Reviewed

Origins Laboratory, Inc.

J. Bynon

The results in this report apply to the samples analyzed in accordance with the chain of custody document. This analytical report must be reproduced in its entirety.

Eagle Environmental Consulting, Inc.
8000 W 44th Ave
Wheat Ridge CO 80033

Martin C Eckert III
Project Number: [none]
Project: Noble - Wells Ranch CGF

WC-SS-01@0.5'

12/27/2022 2:00:00PM

Analyte	Result	Min Detection Limit	Reporting Limit	Units	Dilution	Batch	Prepared	Analyzed	Notes
---------	--------	---------------------	-----------------	-------	----------	-------	----------	----------	-------

Origins Laboratory, Inc.
Y212572-01 (Soil)

Boron (DTPA Sorbitol)

Boron	0.403	0.100	mg/L	1	B2L2803	12/28/2022	01/03/2023
-------	-------	-------	------	---	---------	------------	------------

DRO/ORO by EPA 8015D

Diesel (C10-C28)	1160	25.0	mg/kg	1	B2L2727	12/27/2022	12/28/2022
Residual Range Organics (C28-C40)	425	100	"	"	"	"	"

Surrogate: o-Terphenyl	80.4 %	50-150	"	"	"
------------------------	--------	--------	---	---	---

GBTEX+TMBs by 8260D

1,2,4-Trimethylbenzene	7.66	0.0500	mg/kg	25	B2L2728	12/27/2022	12/27/2022
1,3,5-Trimethylbenzene	3.00	0.0500	"	"	"	"	"
Benzene	1.65	0.0500	"	"	"	"	"
Ethylbenzene	2.08	0.0500	"	"	"	"	"
Toluene	9.78	0.0500	"	"	"	"	"
Xylenes, total	18.8	0.0500	"	"	"	"	"
Gasoline Range Hydrocarbons	340	50.0	"	250	"	"	12/28/2022

Surrogate: 1,2-Dichloroethane-d4	117 %	70-130	"	"	12/27/2022
Surrogate: Toluene-d8	110 %	70-130	"	"	"
Surrogate: 4-Bromofluorobenzene	82.2 %	70-130	"	"	"

Origins Laboratory, Inc.



The results in this report apply to the samples analyzed in accordance with the chain of custody document. This analytical report must be reproduced in its entirety.

Eagle Environmental Consulting, Inc.
8000 W 44th Ave
Wheat Ridge CO 80033

Martin C Eckert III
Project Number: [none]
Project: Noble - Wells Ranch CGF

WC-SS-01@0.5'

12/27/2022 2:00:00PM

Analyte	Result	Min Detection Limit	Reporting Limit	Units	Dilution	Batch	Prepared	Analyzed	Notes
---------	--------	---------------------	-----------------	-------	----------	-------	----------	----------	-------

Origins Laboratory, Inc.
Y212572-01 (Soil)

Metals by Saturated Paste by EPA 6010

Calcium	21.7	0.499	meq/L	10	[CALC]	12/28/2022	12/29/2022
Magnesium	9.64	0.823	"	"	"	"	"
Sodium	13.3	0.435	"	"	"	"	"

PAH by 8270D SIM

1-Methylnaphthalene	0.905	0.0109	0.0201	mg/Kg	10	L656721	01/04/2023	01/04/2023
2-Methylnaphthalene	1.64	0.0194	0.0201	"	"	"	"	"
Acenaphthene	0.0924	0.00304	0.0067	"	"	"	"	"
Anthracene	ND	0.00334	0.0067	"	"	"	"	"
Benzo(a)anthracene	ND	0.00493	0.0067	"	"	"	"	"
Benzo(a)pyrene	ND	0.00468	0.0067	"	"	"	"	"
Benzo(b)fluoranthene	ND	0.00585	0.0067	"	"	"	"	"
Benzo(k)fluoranthene	ND	0.00437	0.0067	"	"	"	"	"
Chrysene	0.0345	0.00624	0.0067	"	"	"	"	"
Dibenz(a,h)anthracene	ND	0.00614	0.0067	"	"	"	"	"
Fluoranthene	ND	0.00394	0.0067	"	"	"	"	"
Fluorene	0.125	0.00286	0.0067	"	"	"	"	"
Indeno(1,2,3-cd)pyrene	ND	0.00627	0.0067	"	"	"	"	"
Naphthalene	0.447	0.0145	0.0201	"	"	"	"	"
Pyrene	0.00823	0.00643	0.0067	"	"	"	"	"
Surrogate: 2-Fluorobiphenyl	55.4 %		33-115			"	"	"
Surrogate: 4-Terphenyl-d14	64.8 %		33-122			"	"	"

Origins Laboratory, Inc.



The results in this report apply to the samples analyzed in accordance with the chain of custody document. This analytical report must be reproduced in its entirety.

Eagle Environmental Consulting, Inc.
8000 W 44th Ave
Wheat Ridge CO 80033

Martin C Eckert III
Project Number: [none]
Project: Noble - Wells Ranch CGF

WC-SS-01@0.5'

12/27/2022 2:00:00PM

Analyte	Result	Min Detection Limit	Reporting Limit	Units	Dilution	Batch	Prepared	Analyzed	Notes
---------	--------	---------------------	-----------------	-------	----------	-------	----------	----------	-------

Waypoint Analytical, LLC.
Y212572-01 (Soil)

PAH by 8270D SIM

Surrogate: Nitrobenzene-d5	56.6 %	29-110	L6567 21	01/04/2023	01/04/2023
----------------------------	--------	--------	-------------	------------	------------

pH in Soil by 9045D

pH	7.71	pH Units	1	B2L2808	12/28/2022	12/29/2022
----	------	----------	---	---------	------------	------------

SAR by 20B Saturated Paste

SAR	3.37	SAR	1	B2L2806	12/28/2022	12/29/2022
-----	------	-----	---	---------	------------	------------

Specific Conductance Mod. 9050A

Specific Conductance (EC)	3.34	0.00500	mmhos/cm	1	B2L2808	12/28/2022	12/29/2022
---------------------------	------	---------	----------	---	---------	------------	------------

Table 915 metals by EPA 6020B

Arsenic	2.64	0.0872	mg/kg	10	B2L2817	12/29/2022	12/29/2022
Barium	76.5	8.72	"	"	"	"	"
Cadmium	ND	0.0872	"	"	"	"	"
Copper	13.8	8.72	"	"	"	"	"
Lead	ND	8.72	"	"	"	"	"
Nickel	9.17	8.72	"	"	"	"	"
Selenium	ND	0.0872	"	"	"	"	"
Silver	ND	0.0872	"	"	"	"	"

Origins Laboratory, Inc.



The results in this report apply to the samples analyzed in accordance with the chain of custody document. This analytical report must be reproduced in its entirety.

Eagle Environmental Consulting, Inc.
8000 W 44th Ave
Wheat Ridge CO 80033

Martin C Eckert III
Project Number: [none]
Project: Noble - Wells Ranch CGF

WC-SS-01@0.5'

12/27/2022 2:00:00PM

Analyte	Result	Min Detection Limit	Reporting Limit	Units	Dilution	Batch	Prepared	Analyzed	Notes
---------	--------	------------------------	--------------------	-------	----------	-------	----------	----------	-------

Origins Laboratory, Inc.
Y212572-01 (Soil)

Table 915 metals by EPA 6020B

Zinc	ND		87.2	mg/kg	10	B2L2817	12/29/2022	12/29/2022	
------	----	--	------	-------	----	---------	------------	------------	--

Total Metals by 7196A

Chromium, Hexavalent	ND	0.253	0.519	mg/Kg	1	L656746	12/27/2022	01/04/2023	
----------------------	----	-------	-------	-------	---	---------	------------	------------	--

Origins Laboratory, Inc.



The results in this report apply to the samples analyzed in accordance with the chain of custody document. This analytical report must be reproduced in its entirety.

Eagle Environmental Consulting, Inc.
8000 W 44th Ave
Wheat Ridge CO 80033

Martin C Eckert III
Project Number: [none]
Project: Noble - Wells Ranch CGF

WC-SS-02@0.5'

12/27/2022 2:14:00PM

Analyte	Result	Min Detection Limit	Reporting Limit	Units	Dilution	Batch	Prepared	Analyzed	Notes
---------	--------	---------------------	-----------------	-------	----------	-------	----------	----------	-------

Origins Laboratory, Inc.
Y212572-02 (Soil)

Boron (DTPA Sorbitol)

Boron	0.111	0.0990	mg/L	1	B2L2803	12/28/2022	01/03/2023	
-------	-------	--------	------	---	---------	------------	------------	--

DRO/ORO by EPA 8015D

Diesel (C10-C28)	ND	25.0	mg/kg	1	B2L2727	12/27/2022	12/28/2022	U
Residual Range Organics (C28-C40)	ND	100	"	"	"	"	"	U

Surrogate: o-Terphenyl	76.6 %	50-150			"	"	"	
------------------------	--------	--------	--	--	---	---	---	--

GBTEX+TMBs by 8260D

1,2,4-Trimethylbenzene	0.0158	0.00200	mg/kg	1	B2L2728	12/27/2022	12/27/2022	
1,3,5-Trimethylbenzene	0.00512	0.00200	"	"	"	"	"	
Benzene	ND	0.00200	"	"	"	"	"	U
Ethylbenzene	ND	0.00200	"	"	"	"	"	U
Toluene	0.0110	0.00200	"	"	"	"	"	
Xylenes, total	0.0258	0.00200	"	"	"	"	"	
Gasoline Range Hydrocarbons	211	50.0	"	250	"	"	12/28/2022	

Surrogate: 1,2-Dichloroethane-d4	125 %	70-130			"	"	12/27/2022	
Surrogate: Toluene-d8	107 %	70-130			"	"	"	

Origins Laboratory, Inc.



The results in this report apply to the samples analyzed in accordance with the chain of custody document. This analytical report must be reproduced in its entirety.

Eagle Environmental Consulting, Inc.
8000 W 44th Ave
Wheat Ridge CO 80033

Martin C Eckert III
Project Number: [none]
Project: Noble - Wells Ranch CGF

WC-SS-02@0.5'

12/27/2022 2:14:00PM

Analyte	Result	Min Detection Limit	Reporting Limit	Units	Dilution	Batch	Prepared	Analyzed	Notes
---------	--------	---------------------	-----------------	-------	----------	-------	----------	----------	-------

Origins Laboratory, Inc.
Y212572-02 (Soil)

GBTEX+TMBs by 8260D

Surrogate: 4-Bromofluorobenzene	90.9 %	70-130	B2L27 28	12/27/2022	12/27/2022
---------------------------------	--------	--------	-------------	------------	------------

Metals by Saturated Paste by EPA 6010

Calcium	1.20	0.499	meq/L	10	[CALC]	12/28/2022	12/29/2022
Magnesium	ND	0.823	"	"	"	"	"
Sodium	ND	0.435	"	"	"	"	"

PAH by 8270D SIM

1-Methylnaphthalene	0.0132	0.00109	0.00201	mg/Kg	1	L656721	01/04/2023	01/04/2023
2-Methylnaphthalene	0.0257	0.00194	0.00201	"	"	"	"	"
Acenaphthene	0.000997	0.000304	0.00067	"	"	"	"	"
Anthracene	ND	0.000334	0.00067	"	"	"	"	"
Benzo(a)anthracene	ND	0.000493	0.00067	"	"	"	"	"
Benzo(a)pyrene	ND	0.000468	0.00067	"	"	"	"	"
Benzo(b)fluoranthene	ND	0.000585	0.00067	"	"	"	"	"
Benzo(k)fluoranthene	ND	0.000437	0.00067	"	"	"	"	"
Chrysene	0.000776	0.000624	0.00067	"	"	"	"	"
Dibenz(a,h)anthracene	ND	0.000614	0.00067	"	"	"	"	"
Fluoranthene	ND	0.000394	0.00067	"	"	"	"	"
Fluorene	0.00147	0.000286	0.00067	"	"	"	"	"

Origins Laboratory, Inc.



The results in this report apply to the samples analyzed in accordance with the chain of custody document. This analytical report must be reproduced in its entirety.

Eagle Environmental Consulting, Inc.
8000 W 44th Ave
Wheat Ridge CO 80033

Martin C Eckert III
Project Number: [none]
Project: Noble - Wells Ranch CGF

WC-SS-02@0.5'

12/27/2022 2:14:00PM

Analyte	Result	Min Detection Limit	Reporting Limit	Units	Dilution	Batch	Prepared	Analyzed	Notes
---------	--------	---------------------	-----------------	-------	----------	-------	----------	----------	-------

Waypoint Analytical, LLC.
Y212572-02 (Soil)

PAH by 8270D SIM

Indeno(1,2,3-cd)pyrene	ND	0.000627	0.00067	mg/Kg	1	L656721	01/04/2023	01/04/2023
Naphthalene	0.00678	0.00145	0.00201	"	"	"	"	"
Pyrene	ND	0.000643	0.00067	"	"	"	"	"

Surrogate: 2-Fluorobiphenyl	48.2 %		33-115			"	"	"
Surrogate: 4-Terphenyl-d14	54.2 %		33-122			"	"	"
Surrogate: Nitrobenzene-d5	50.6 %		29-110			"	"	"

pH in Soil by 9045D

pH	7.62			pH Units	1	B2L2808	12/28/2022	12/29/2022
----	------	--	--	----------	---	---------	------------	------------

SAR by 20B Saturated Paste

SAR	0.179			SAR	1	B2L2806	12/28/2022	12/29/2022
-----	-------	--	--	-----	---	---------	------------	------------

Specific Conductance Mod. 9050A

Specific Conductance (EC)	0.272		0.00500	mmhos/cm	1	B2L2808	12/28/2022	12/29/2022
---------------------------	-------	--	---------	----------	---	---------	------------	------------

Table 915 metals by EPA 6020B

Arsenic	2.95		0.0911	mg/kg	10	B2L2817	12/29/2022	12/29/2022
Barium	66.9		9.11	"	"	"	"	"

Origins Laboratory, Inc.



The results in this report apply to the samples analyzed in accordance with the chain of custody document. This analytical report must be reproduced in its entirety.

Eagle Environmental Consulting, Inc.
8000 W 44th Ave
Wheat Ridge CO 80033

Martin C Eckert III
Project Number: [none]
Project: Noble - Wells Ranch CGF

WC-SS-02@0.5'

12/27/2022 2:14:00PM

Analyte	Result	Min Detection Limit	Reporting Limit	Units	Dilution	Batch	Prepared	Analyzed	Notes
---------	--------	------------------------	--------------------	-------	----------	-------	----------	----------	-------

Origins Laboratory, Inc.
Y212572-02 (Soil)

Table 915 metals by EPA 6020B

Cadmium	0.104		0.0911	mg/kg	10	B2L2817	12/29/2022	12/29/2022
Copper	ND		9.11	"	"	"	"	"
Lead	ND		9.11	"	"	"	"	"
Nickel	ND		9.11	"	"	"	"	"
Selenium	ND		0.0911	"	"	"	"	"
Silver	ND		0.0911	"	"	"	"	"
Zinc	ND		91.1	"	"	"	"	"

Total Metals by 7196A

Chromium, Hexavalent	ND	0.245	0.503	mg/Kg	1	L656746	12/27/2022	01/04/2023
----------------------	----	-------	-------	-------	---	---------	------------	------------

Origins Laboratory, Inc.



The results in this report apply to the samples analyzed in accordance with the chain of custody document. This analytical report must be reproduced in its entirety.

Eagle Environmental Consulting, Inc.
8000 W 44th Ave
Wheat Ridge CO 80033

Martin C Eckert III
Project Number: [none]
Project: Noble - Wells Ranch CGF

Extractable Petroleum Hydrocarbons by 8015D - Quality Control
Origins Laboratory, Inc.

Analyte	Result	Reporting Limit	Units	Spike Level	Source Result	%REC	%REC Limits	RPD	RPD Limit	Notes
Batch B2L2727 - EPA 3580										
Blank (B2L2727-BLK1)					Prepared: 12/27/2022 Analyzed: 12/27/2022					
Diesel (C10-C28)	ND	25.0	mg/kg							U
Residual Range Organics (C28-C40)	ND	100	"							U
Surrogate: o-Terphenyl	19		"	24.9		75.8	50-150			

Origins Laboratory, Inc.



The results in this report apply to the samples analyzed in accordance with the chain of custody document. This analytical report must be reproduced in its entirety.

Eagle Environmental Consulting, Inc.
8000 W 44th Ave
Wheat Ridge CO 80033

Martin C Eckert III
Project Number: [none]
Project: Noble - Wells Ranch CGF

Extractable Petroleum Hydrocarbons by 8015D - Quality Control
Origins Laboratory, Inc.

Analyte	Result	Reporting Limit	Units	Spike Level	Source Result	%REC	%REC Limits	RPD	RPD Limit	Notes
---------	--------	-----------------	-------	-------------	---------------	------	-------------	-----	-----------	-------

Batch B2L2727 - EPA 3580

LCS (B2L2727-BS1)

Prepared: 12/27/2022 Analyzed: 12/27/2022

Diesel (C10-C28)	894	50.0	mg/kg	1000		89.4	70-130			
Residual Range Organics (C28-C40)	922	200	"	1000		92.2	70-130			
Surrogate: o-Terphenyl	38		"	49.8		76.1	50-150			

Origins Laboratory, Inc.



The results in this report apply to the samples analyzed in accordance with the chain of custody document. This analytical report must be reproduced in its entirety.

Eagle Environmental Consulting, Inc.
8000 W 44th Ave
Wheat Ridge CO 80033

Martin C Eckert III
Project Number: [none]
Project: Noble - Wells Ranch CGF

Extractable Petroleum Hydrocarbons by 8015D - Quality Control
Origins Laboratory, Inc.

Analyte	Result	Reporting Limit	Units	Spike Level	Source Result	%REC	%REC Limits	RPD	RPD Limit	Notes
---------	--------	-----------------	-------	-------------	---------------	------	-------------	-----	-----------	-------

Batch B2L2727 - EPA 3580

Matrix Spike (B2L2727-MS1)		Source: Y212569-08			Prepared: 12/27/2022 Analyzed: 12/27/2022					
Diesel (C10-C28)	1080	50.0	mg/kg	1000	51.8	102	70-130			
Residual Range Organics (C28-C40)	1030	200	"	1000	ND	103	70-130			
Surrogate: o-Terphenyl	27		"	49.8		54.7	50-150			

Origins Laboratory, Inc.



The results in this report apply to the samples analyzed in accordance with the chain of custody document. This analytical report must be reproduced in its entirety.

Eagle Environmental Consulting, Inc.
8000 W 44th Ave
Wheat Ridge CO 80033

Martin C Eckert III
Project Number: [none]
Project: Noble - Wells Ranch CGF

Extractable Petroleum Hydrocarbons by 8015D - Quality Control Origins Laboratory, Inc.

Analyte	Result	Reporting Limit	Units	Spike Level	Source Result	%REC	%REC Limits	RPD	RPD Limit	Notes
Batch B2L2727 - EPA 3580										
Matrix Spike Dup (B2L2727-MSD1)		Source: Y212569-08			Prepared: 12/27/2022 Analyzed: 12/27/2022					
Diesel (C10-C28)	1060	50.0	mg/kg	1000	51.8	101	70-130	1.16	35	
Residual Range Organics (C28-C40)	1040	200	"	1000	ND	104	70-130	1.60	35	
Surrogate: o-Terphenyl	35		"	49.8		69.5	50-150			

Origins Laboratory, Inc.



The results in this report apply to the samples analyzed in accordance with the chain of custody document. This analytical report must be reproduced in its entirety.

Eagle Environmental Consulting, Inc.
8000 W 44th Ave
Wheat Ridge CO 80033

Martin C Eckert III
Project Number: [none]
Project: Noble - Wells Ranch CGF

Extractable Petroleum Hydrocarbons by 8015D - Quality Control

Origins Laboratory, Inc.

Analyte	Result	Reporting Limit	Units	Spike Level	Source Result	%REC	%REC Limits	RPD	RPD Limit	Notes
Batch B2L2728 - EPA 5030 (soil)										
Blank (B2L2728-BLK1)					Prepared: 12/27/2022 Analyzed: 12/27/2022					
1,2,4-Trimethylbenzene	ND	0.00200	mg/kg							U
1,3,5-Trimethylbenzene	ND	0.00200	"							U
Benzene	ND	0.00200	"							U
Ethylbenzene	ND	0.00200	"							U
Naphthalene	ND	0.00380	"							U
Toluene	ND	0.00200	"							U
Xylenes, total	ND	0.00200	"							U
Gasoline Range Hydrocarbons	ND	0.200	"							U
Surrogate: 1,2-Dichloroethane-d4	0.15		"	0.125	121		70-130			
Surrogate: Toluene-d8	0.13		"	0.125	107		70-130			
Surrogate: 4-Bromofluorobenzene	0.12		"	0.125	94.1		70-130			

Origins Laboratory, Inc.



The results in this report apply to the samples analyzed in accordance with the chain of custody document. This analytical report must be reproduced in its entirety.

Eagle Environmental Consulting, Inc.
8000 W 44th Ave
Wheat Ridge CO 80033

Martin C Eckert III
Project Number: [none]
Project: Noble - Wells Ranch CGF

Volatile Organic Compounds by GC/MS SW846 8260D - Quality Control
Origins Laboratory, Inc.

Analyte	Result	Reporting Limit	Units	Spike Level	Source Result	%REC	%REC Limits	RPD	RPD Limit	Notes
---------	--------	-----------------	-------	-------------	---------------	------	-------------	-----	-----------	-------

Batch B2L2728 - EPA 5030 (soil)

LCS (B2L2728-BS1)

Prepared: 12/27/2022 Analyzed: 12/27/2022

1,2,4-Trimethylbenzene	0.0854	0.00200	mg/kg	0.100		85.4	70-130			
1,3,5-Trimethylbenzene	0.0856	0.00200	"	0.100		85.6	70-130			
Benzene	0.102	0.00200	"	0.100		102	70-130			
Ethylbenzene	0.101	0.00200	"	0.100		101	70-130			
Naphthalene	0.104	0.00380	"	0.100		104	70-130			
Toluene	0.101	0.00200	"	0.100		101	70-130			
o-Xylene	0.0928	0.00200	"	0.100		92.8	70-130			
m,p-Xylene	0.192	0.00400	"	0.200		96.1	70-130			
Surrogate: 1,2-Dichloroethane-d4	0.14		"	0.125		115	70-130			
Surrogate: Toluene-d8	0.13		"	0.125		108	70-130			
Surrogate: 4-Bromofluorobenzene	0.13		"	0.125		101	70-130			

Origins Laboratory, Inc.



The results in this report apply to the samples analyzed in accordance with the chain of custody document. This analytical report must be reproduced in its entirety.

Eagle Environmental Consulting, Inc.
8000 W 44th Ave
Wheat Ridge CO 80033

Martin C Eckert III
Project Number: [none]
Project: Noble - Wells Ranch CGF

Volatile Organic Compounds by GC/MS SW846 8260D - Quality Control
Origins Laboratory, Inc.

Analyte	Result	Reporting Limit	Units	Spike Level	Source Result	%REC	%REC Limits	RPD	RPD Limit	Notes
---------	--------	-----------------	-------	-------------	---------------	------	-------------	-----	-----------	-------

Batch B2L2728 - EPA 5030 (soil)

Matrix Spike (B2L2728-MS1)		Source: Y212572-02			Prepared: 12/27/2022 Analyzed: 12/27/2022					
1,2,4-Trimethylbenzene	0.0910	0.00200	mg/kg	0.100	0.0158	75.3	70-130			
1,3,5-Trimethylbenzene	0.0843	0.00200	"	0.100	0.00512	79.1	70-130			
Benzene	0.0941	0.00200	"	0.100	0.000960	93.1	70-130			
Ethylbenzene	0.0908	0.00200	"	0.100	ND	90.8	70-130			
Naphthalene	0.112	0.00380	"	0.100	0.00254	109	70-130			
Toluene	0.0954	0.00200	"	0.100	0.0110	84.4	70-130			
o-Xylene	0.0905	0.00200	"	0.100	0.00790	82.6	70-130			
m,p-Xylene	0.185	0.00400	"	0.200	0.0179	83.8	70-130			
Surrogate: 1,2-Dichloroethane-d4	0.15		"	0.125		123	70-130			
Surrogate: Toluene-d8	0.13		"	0.125		104	70-130			
Surrogate: 4-Bromofluorobenzene	0.12		"	0.125		99.7	70-130			

Origins Laboratory, Inc.



The results in this report apply to the samples analyzed in accordance with the chain of custody document. This analytical report must be reproduced in its entirety.

Eagle Environmental Consulting, Inc.
8000 W 44th Ave
Wheat Ridge CO 80033

Martin C Eckert III
Project Number: [none]
Project: Noble - Wells Ranch CGF

Volatile Organic Compounds by GC/MS SW846 8260D - Quality Control
Origins Laboratory, Inc.

Analyte	Result	Reporting Limit	Units	Spike Level	Source Result	%REC	%REC Limits	RPD	RPD Limit	Notes
Batch B2L2728 - EPA 5030 (soil)										
Matrix Spike Dup (B2L2728-MSD1)	Source: Y212572-02				Prepared: 12/27/2022 Analyzed: 12/27/2022					
1,2,4-Trimethylbenzene	0.101	0.00200	mg/kg	0.100	0.0158	84.7	70-130	9.88	20	
1,3,5-Trimethylbenzene	0.0753	0.00200	"	0.100	0.00512	70.1	70-130	11.3	20	
Benzene	0.0871	0.00200	"	0.100	0.000960	86.1	70-130	7.71	20	
Ethylbenzene	0.0778	0.00200	"	0.100	ND	77.8	70-130	15.4	20	
Naphthalene	0.0915	0.00380	"	0.100	0.00254	89.0	70-130	19.7	20	
Toluene	0.0866	0.00200	"	0.100	0.0110	75.6	70-130	9.61	20	
o-Xylene	0.0847	0.00200	"	0.100	0.00790	76.8	70-130	6.65	20	
m,p-Xylene	0.174	0.00400	"	0.200	0.0179	77.8	70-130	6.65	20	
Surrogate: 1,2-Dichloroethane-d4	0.16		"	0.125		126	70-130			
Surrogate: Toluene-d8	0.13		"	0.125		104	70-130			
Surrogate: 4-Bromofluorobenzene	0.12		"	0.125		96.4	70-130			

Origins Laboratory, Inc.



The results in this report apply to the samples analyzed in accordance with the chain of custody document. This analytical report must be reproduced in its entirety.

Eagle Environmental Consulting, Inc.
8000 W 44th Ave
Wheat Ridge CO 80033

Martin C Eckert III
Project Number: [none]
Project: Noble - Wells Ranch CGF

Volatile Organic Compounds by GC/MS SW846 8260D - Quality Control

Origins Laboratory, Inc.

Analyte	Result	Reporting Limit	Units	Spike Level	Source Result	%REC	%REC Limits	RPD	RPD Limit	Notes
---------	--------	-----------------	-------	-------------	---------------	------	-------------	-----	-----------	-------

Metals by EPA 6000/7000 Series Methods - Quality Control

Origins Laboratory, Inc.

Analyte	Result	Reporting Limit	Units	Spike Level	Source Result	%REC	%REC Limits	RPD	RPD Limit	Notes
---------	--------	-----------------	-------	-------------	---------------	------	-------------	-----	-----------	-------

Batch B2L2817 - EPA 3050B

Blank (B2L2817-BLK1)

Prepared: 12/29/2022 Analyzed: 12/29/2022

Arsenic	ND	0.000100	mg/kg
Barium	ND	0.0100	"
Cadmium	ND	0.000100	"
Copper	ND	0.0100	"
Lead	ND	0.0100	"
Nickel	ND	0.0100	"
Selenium	ND	0.000100	"
Silver	ND	0.000100	"
Zinc	ND	0.100	"

LCS (B2L2817-BS1)

Prepared: 12/29/2022 Analyzed: 12/29/2022

Arsenic	0.0510	0.000100	mg/kg	0.0500	102	80-120
Barium	4.96	0.0100	"	5.00	99.1	80-120
Cadmium	0.0518	0.000100	"	0.0500	104	80-120
Copper	0.520	0.0100	"	0.500	104	80-120
Lead	0.0515	0.0100	"	0.0500	103	80-120
Nickel	0.0526	0.0100	"	0.0500	105	80-120
Selenium	0.0500	0.000100	"	0.0500	99.9	80-120
Silver	0.0508	0.000100	"	0.0500	102	80-120
Zinc	0.500	0.100	"	0.500	100	80-120

Matrix Spike (B2L2817-MS1)

Source: Y212591-01

Prepared: 12/29/2022 Analyzed: 12/29/2022

Origins Laboratory, Inc.



The results in this report apply to the samples analyzed in accordance with the chain of custody document. This analytical report must be reproduced in its entirety.

Eagle Environmental Consulting, Inc.
8000 W 44th Ave
Wheat Ridge CO 80033

Martin C Eckert III
Project Number: [none]
Project: Noble - Wells Ranch CGF

Metals by EPA 6000/7000 Series Methods - Quality Control
Origins Laboratory, Inc.

Analyte	Result	Reporting Limit	Units	Spike Level	Source Result	%REC	%REC Limits	RPD	RPD Limit	Notes
Batch B2L2817 - EPA 3050B										
Matrix Spike (B2L2817-MS1)		Source: Y212591-01			Prepared: 12/29/2022 Analyzed: 12/29/2022					
Arsenic	10.1	0.0945	mg/kg	4.73	2.91	153	75-125			QM-07
Barium	653	9.45	"	473	86.9	120	75-125			
Cadmium	5.69	0.0945	"	4.73	0.111	118	75-125			
Copper	60.3	9.45	"	47.3	7.27	112	75-125			
Lead	12.0	9.45	"	4.73	5.28	141	75-125			QM-07
Nickel	12.9	9.45	"	4.73	7.74	110	75-125			
Selenium	5.15	0.0945	"	4.73	0.254	103	75-125			
Silver	5.53	0.0945	"	4.73	0.0283	116	75-125			
Zinc	81.8	94.5	"	47.3	27.9	114	75-125			
Matrix Spike Dup (B2L2817-MSD1)		Source: Y212591-01			Prepared: 12/29/2022 Analyzed: 12/29/2022					
Arsenic	7.88	0.0979	mg/kg	4.89	2.91	102	75-125	25.1	20	QR-DUP
Barium	612	9.79	"	489	86.9	107	75-125	6.47	20	
Cadmium	5.47	0.0979	"	4.89	0.111	110	75-125	3.93	20	
Copper	58.3	9.79	"	48.9	7.27	104	75-125	3.32	20	
Lead	10.8	9.79	"	4.89	5.28	113	75-125	10.0	20	
Nickel	12.3	9.79	"	4.89	7.74	92.6	75-125	5.25	20	
Selenium	4.60	0.0979	"	4.89	0.254	88.8	75-125	11.2	20	
Silver	5.17	0.0979	"	4.89	0.0283	105	75-125	6.75	20	
Zinc	82.6	97.9	"	48.9	27.9	112	75-125	0.974	20	

Origins Laboratory, Inc.



The results in this report apply to the samples analyzed in accordance with the chain of custody document. This analytical report must be reproduced in its entirety.

Eagle Environmental Consulting, Inc.
8000 W 44th Ave
Wheat Ridge CO 80033

Martin C Eckert III
Project Number: [none]
Project: Noble - Wells Ranch CGF

Classical Chemistry Parameters - Quality Control

Origins Laboratory, Inc.

Analyte	Result	Reporting Limit	Units	Spike Level	Source Result	%REC	%REC Limits	RPD	RPD Limit	Notes
---------	--------	-----------------	-------	-------------	---------------	------	-------------	-----	-----------	-------

Batch B2L2803 - DTPA Sorbitol Preparation

Blank (B2L2803-BLK1)

Prepared: 12/28/2022 Analyzed: 12/29/2022

Boron ND 0.100 mg/L

Duplicate (B2L2803-DUP1)

Source: Y212494-02

Prepared: 12/28/2022 Analyzed: 12/29/2022

Boron 7.28 0.101 mg/L 7.42 1.80 50

Batch B2L2806 - Saturated Paste Metals

Blank (B2L2806-BLK1)

Prepared: 12/28/2022 Analyzed: 12/29/2022

Calcium PPM ND 10.0 mg/L

SAR 0.00 SAR

Magnesium PPM ND 10.0 mg/L

Sodium PPM ND 10.0 "

Duplicate (B2L2806-DUP1)

Source: Y212569-01

Prepared: 12/28/2022 Analyzed: 12/29/2022

Calcium PPM 916 10.0 mg/L 817 11.5 50

SAR 0.00 SAR 2.39 200 200

Magnesium PPM 324 10.0 mg/L 275 16.7 50

Sodium PPM 369 10.0 " 309 17.7 50

Origins Laboratory, Inc.



The results in this report apply to the samples analyzed in accordance with the chain of custody document. This analytical report must be reproduced in its entirety.

Eagle Environmental Consulting, Inc.
8000 W 44th Ave
Wheat Ridge CO 80033

Martin C Eckert III
Project Number: [none]
Project: Noble - Wells Ranch CGF

Saturated Paste - Quality Control
Origins Laboratory, Inc.

Analyte	Result	Reporting Limit	Units	Spike Level	Source Result	%REC	%REC Limits	RPD	RPD Limit	Notes
Batch B2L2808 - Saturated Paste pH/EC										
Blank (B2L2808-BLK1)					Prepared: 12/28/2022 Analyzed: 12/29/2022					
Specific Conductance (EC)	ND	0.00500	mmhos/cm							
Duplicate (B2L2808-DUP1)					Source: Y212569-01 Prepared: 12/28/2022 Analyzed: 12/29/2022					
pH	7.65		pH Units		7.75			1.30	25	
Specific Conductance (EC)	7.83	0.00500	mmhos/cm		6.81			13.9	25	

Origins Laboratory, Inc.



The results in this report apply to the samples analyzed in accordance with the chain of custody document. This analytical report must be reproduced in its entirety.

Eagle Environmental Consulting, Inc.
8000 W 44th Ave
Wheat Ridge CO 80033

Martin C Eckert III
Project Number: [none]
Project: Noble - Wells Ranch CGF

PAH by 8270D SIM - Quality Control
Waypoint Analytical, LLC.

Analyte	Result	Reporting Limit	Units	Spike Level	Source Result	%REC	%REC Limits	RPD	RPD Limit	Notes
---------	--------	-----------------	-------	-------------	---------------	------	-------------	-----	-----------	-------

Batch L656721 - 3550B

MSD (L 88331-MSD-L656721)		Source: 88331			Prepared: 01/04/2023 Analyzed: 01/04/2023					
Fluoranthene	0.104	0.00067	mg/Kg	0.162	<0.000394	64.1	30-130	6.5	30	
Pyrene	0.1	0.00067	"	0.162	<0.000643	61.7	30-130	8.6	30	
Naphthalene	0.11	0.00201	"	0.162	<0.00145	67.9	30-130	1.8	30	
2-Methylnaphthalene	0.0999	0.00201	"	0.162	<0.00194	61.6	30-130	2	30	
Indeno(1,2,3-cd)pyrene	0.0913	0.00067	"	0.162	<0.000627	56.3	30-130	43.4	30	*
Fluorene	0.113	0.00067	"	0.162	<0.000286	69.7	30-130	3.4	30	
Acenaphthene	0.102	0.00067	"	0.162	<0.000304	62.9	30-130	1.9	30	
Anthracene	0.111	0.00067	"	0.162	<0.000334	68.5	30-130	4.4	30	
Benzo(a)pyrene	0.095	0.00067	"	0.162	<0.000468	58.6	30-130	16.4	30	
Benzo(b)fluoranthene	0.0637	0.00067	"	0.162	<0.000585	39.3	30-130	46.2	30	*
Benzo(k)fluoranthene	0.0717	0.00067	"	0.162	<0.000437	44.2	30-130	30.6	30	*
Chrysene	0.107	0.00067	"	0.162	<0.000624	66	30-130	8.9	30	
Dibenz(a,h)anthracene	0.0987	0.00067	"	0.162	<0.000614	60.9	30-130	46.7	30	*
Benzo(a)anthracene	0.102	0.00067	"	0.162	<0.000493	62.9	30-130	7.5	30	
1-Methylnaphthalene	0.0978	0.00201	"	0.162	<0.00109	60.3	30-130	1.1	30	
Surrogate: Nitrobenzene-d5	56.9		"	0.325	158	56.9	29-110			
Surrogate: 2-Fluorobiphenyl	50.4		"	0.325	139	50.4	33-115			
Surrogate: 4-Terphenyl-d14	51.3		"	0.325	142	51.3	33-122			

MS (L 88331-MS-L656721)		Source: 88331			Prepared: 01/04/2023 Analyzed: 01/04/2023					
Naphthalene	0.112	0.00201	mg/Kg	0.163	<0.00145	68.7	30-130			
Benzo(b)fluoranthene	0.102	0.00067	"	0.163	<0.000585	62.5	30-130			
Pyrene	0.109	0.00067	"	0.163	<0.000643	66.8	30-130			
Benzo(k)fluoranthene	0.0977	0.00067	"	0.163	<0.000437	59.9	30-130			
Chrysene	0.117	0.00067	"	0.163	<0.000624	71.7	30-130			
Dibenz(a,h)anthracene	0.159	0.00067	"	0.163	<0.000614	97.5	30-130			
Fluoranthene	0.111	0.00067	"	0.163	<0.000394	68	30-130			

Origins Laboratory, Inc.



The results in this report apply to the samples analyzed in accordance with the chain of custody document. This analytical report must be reproduced in its entirety.

Eagle Environmental Consulting, Inc.
8000 W 44th Ave
Wheat Ridge CO 80033

Martin C Eckert III
Project Number: [none]
Project: Noble - Wells Ranch CGF

PAH by 8270D SIM - Quality Control
Waypoint Analytical, LLC.

Analyte	Result	Reporting Limit	Units	Spike Level	Source Result	%REC	%REC Limits	RPD	RPD Limit	Notes
---------	--------	-----------------	-------	-------------	---------------	------	-------------	-----	-----------	-------

Batch L656721 - 3550B

MS (L 88331-MS-L656721)		Source: 88331			Prepared: 01/04/2023 Analyzed: 01/04/2023					
Indeno(1,2,3-cd)pyrene	0.142	0.00067	mg/Kg	0.163	<0.000627	87.1	30-130			
Anthracene	0.116	0.00067	"	0.163	<0.000334	71.1	30-130			
Fluorene	0.117	0.00067	"	0.163	<0.000286	71.7	30-130			
Benzo(a)pyrene	0.112	0.00067	"	0.163	<0.000468	68.7	30-130			
Acenaphthene	0.104	0.00067	"	0.163	<0.000304	63.8	30-130			
2-Methylnaphthalene	0.102	0.00201	"	0.163	<0.00194	62.5	30-130			
1-Methylnaphthalene	0.0989	0.00201	"	0.163	<0.00109	60.6	30-130			
Benzo(a)anthracene	0.11	0.00067	"	0.163	<0.000493	67.4	30-130			
Surrogate: Nitrobenzene-d5	57.4		"	0.327	158	57.4	29-110			
Surrogate: 4-Terphenyl-d14	53.2		"	0.327	142	53.2	33-122			
Surrogate: 2-Fluorobiphenyl	50.1		"	0.327	139	50.1	33-115			

LCS (LCS-L656721)		Prepared: 01/04/2023 Analyzed: 01/04/2023								
Benzo(b)fluoranthene	0.111	0.00067	mg/Kg	0.167		66.4	30-130			
Benzo(k)fluoranthene	0.0996	0.00067	"	0.167		59.6	30-130			
Chrysene	0.108	0.00067	"	0.167		64.6	30-130			
Dibenz(a,h)anthracene	0.0896	0.00067	"	0.167		53.6	30-130			
Fluorene	0.0992	0.00067	"	0.167		59.4	30-130			
Benzo(a)pyrene	0.106	0.00067	"	0.167		63.4	30-130			
Fluoranthene	0.111	0.00067	"	0.167		66.4	30-130			
Pyrene	0.105	0.00067	"	0.167		62.8	30-130			
Naphthalene	0.0869	0.00201	"	0.167		52	30-130			
Anthracene	0.0942	0.00067	"	0.167		56.4	30-130			
Acenaphthene	0.0923	0.00067	"	0.167		55.2	30-130			
2-Methylnaphthalene	0.0997	0.00201	"	0.167		59.7	30-130			
1-Methylnaphthalene	0.0866	0.00201	"	0.167		51.8	30-130			
Indeno(1,2,3-cd)pyrene	0.0871	0.00067	"	0.167		52.1	30-130			

Origins Laboratory, Inc.



The results in this report apply to the samples analyzed in accordance with the chain of custody document. This analytical report must be reproduced in its entirety.

Eagle Environmental Consulting, Inc.
8000 W 44th Ave
Wheat Ridge CO 80033

Martin C Eckert III
Project Number: [none]
Project: Noble - Wells Ranch CGF

PAH by 8270D SIM - Quality Control
Waypoint Analytical, LLC.

Analyte	Result	Reporting Limit	Units	Spike Level	Source Result	%REC	%REC Limits	RPD	RPD Limit	Notes
---------	--------	-----------------	-------	-------------	---------------	------	-------------	-----	-----------	-------

Batch L656721 - 3550B

LCS (LCS-L656721)

Prepared: 01/04/2023 Analyzed: 01/04/2023

Benzo(a)anthracene	0.105	0.00067	mg/Kg	0.167		62.8	30-130			
Surrogate: Nitrobenzene-d5	53.7		"	0.333		53.7	29-110			
Surrogate: 4-Terphenyl-d14	58.8		"	0.333		58.8	33-122			
Surrogate: 2-Fluorobiphenyl	49.8		"	0.333		49.8	33-115			

LRB (LRB-L656721)

Prepared: 01/04/2023 Analyzed: 01/04/2023

Naphthalene	ND	0.00201	mg/Kg				-			
Benzo(b)fluoranthene	ND	0.00067	"				-			
Benzo(k)fluoranthene	ND	0.00067	"				-			
Chrysene	ND	0.00067	"				-			
Dibenz(a,h)anthracene	ND	0.00067	"				-			
Fluoranthene	ND	0.00067	"				-			
Benzo(a)pyrene	ND	0.00067	"				-			
Indeno(1,2,3-cd)pyrene	ND	0.00067	"				-			
Fluorene	ND	0.00067	"				-			
Benzo(a)anthracene	ND	0.00067	"				-			
Anthracene	ND	0.00067	"				-			
Acenaphthene	ND	0.00067	"				-			
2-Methylnaphthalene	ND	0.00201	"				-			
1-Methylnaphthalene	ND	0.00201	"				-			
Pyrene	ND	0.00067	"				-			
Surrogate: 2-Fluorobiphenyl	71.1		"	0.333		71.1	33-115			
Surrogate: Nitrobenzene-d5	79.5		"	0.333		79.5	29-110			
Surrogate: 4-Terphenyl-d14	75		"	0.333		75	33-122			

Origins Laboratory, Inc.



The results in this report apply to the samples analyzed in accordance with the chain of custody document. This analytical report must be reproduced in its entirety.

Eagle Environmental Consulting, Inc.
8000 W 44th Ave
Wheat Ridge CO 80033

Martin C Eckert III
Project Number: [none]
Project: Noble - Wells Ranch CGF

Total Metals by 7196A - Quality Control Waypoint Analytical, LLC.

Analyte	Result	Reporting Limit	Units	Spike Level	Source Result	%REC	%REC Limits	RPD	RPD Limit	Notes
Batch L656746 -										
DUP (L 88331-DUP)		Source: 88331			Prepared: Analyzed: 01/04/2023					
Chromium, Hexavalent	ND	2.5	mg/Kg		<2.50	-		0	20	
MS (L 88331-MS)		Source: 88331			Prepared: Analyzed: 01/04/2023					
Chromium, Hexavalent	24.6	2.5	mg/Kg	38.7	<1.22	64	75-125			*
MSD (L 88331-MSD)		Source: 88331			Prepared: Analyzed: 01/04/2023					
Chromium, Hexavalent	600	50	mg/Kg	734	<24.4	82	75-125			
LCS (LCS)					Prepared: Analyzed: 01/04/2023					
Chromium, Hexavalent	6.3	0.5	mg/Kg	8		79	75-125			
LRB (LRB)					Prepared: Analyzed: 01/04/2023					
Chromium, Hexavalent	ND	0.5	mg/Kg							

Origins Laboratory, Inc.



The results in this report apply to the samples analyzed in accordance with the chain of custody document. This analytical report must be reproduced in its entirety.

Eagle Environmental Consulting, Inc.
8000 W 44th Ave
Wheat Ridge CO 80033

Martin C Eckert III
Project Number: [none]
Project: Noble - Wells Ranch CGF

Notes and Definitions

U Sample is Non-Detect.

QR-DUP RPD exceeds QC acceptance criteria, this indicates source sample is not homogenous.

QM-07 The spike recovery was outside acceptance limits for the MS and/or MSD. The batch was accepted based on acceptable LCS recovery.

* QC Failure

ND Analyte NOT DETECTED at or above the reporting limit

RPD Relative Percent Difference

All soil results are reported on a wet weight basis.

Origins Laboratory, Inc.



The results in this report apply to the samples analyzed in accordance with the chain of custody document. This analytical report must be reproduced in its entirety.



January 05, 2023

Eagle Environmental Consulting, Inc.

Martin C Eckert III

8000 W 44th Ave

Wheat Ridge CO 80033

Project Name - Noble - Wells Ranch CGF

Project Number - [none]

Attached are your analytical results for Noble - Wells Ranch CGF received by Origins Laboratory, Inc. December 27, 2022. This project is associated with Origins project number Y212573-01.

The analytical results in the following report were analyzed under the guidelines of EPA Methods. These methods are identified as follows; "SW" are defined in SW-846, "EPA" are defined in 40CFR part 136 and "SM" are defined in the most current revision of Standard Methods For the Examination of Water and Wastewater.

The analytical results apply specifically to the samples and analyses specified per the attached Chain of Custody. As such, this report shall not be reproduced except in full, without the written approval of Origin's laboratory.

Unless otherwise noted, the analytical results for all soil samples are reported on a wet weight basis. All analytical analyses were performed under NELAP guidelines unless noted by a data qualifier.

Any holding time exceedances, deviations from the method specifications or deviations from Origins Laboratory's Standard Operating Procedures are outlined in the case narrative.

Thank you for selecting Origins for your analytical needs. Please contact us with any questions concerning this report, or if we can help with anything at all.

Origins Laboratory, Inc.
303.433.1322
o-squad@oelabinc.com



1725 Elk Place, Denver, CO 80211 | Phone: 303.433.1322 | Fax: 303.265.9645

Eagle Environmental Consulting, Inc.

8000 W 44th Ave

Wheat Ridge CO 80033

Martin C Eckert III

Project Number: [none]

Project: Noble - Wells Ranch CGF

CROSS REFERENCE REPORT

Sample ID	Laboratory ID	Matrix	Date Sampled	Date Received
Background-01@0.5'	Y212573-01	Soil	December 27, 2022 15:15	12/27/2022 17:30

Origins Laboratory, Inc.



The results in this report apply to the samples analyzed in accordance with the chain of custody document. This analytical report must be reproduced in its entirety.

Jordan A. Bynon, Project Manager

Eagle Environmental Consulting, Inc.
8000 W 44th Ave
Wheat Ridge CO 80033

Martin C Eckert III
Project Number: [none]
Project: Noble - Wells Ranch CGF

Origins Laboratory

F-012207-01-R1
Effective Date: 01/09/12

Sample Receipt Checklist

Origins Work Order: YU2573 Client: Eagle
Client Project ID: Wells ranch CGF BPW

Checklist Completed by: DE Shipped Via: HP
(UPS, FedEx, Hand Delivered, Pick-up, etc.)
Date/time completed: 12/17/2012 Airbill #: NA

Matrix(s) Received: (Check all that apply): X Soil/Solid Water Other:

Cooler Number/Temperature: 1 20 °C °C °C (Describe) °C

Thermometer ID: 7004

Requirement Description	Yes	No	N/A	Comments (if any)
If samples require cooling, was the temperature between 0°C to ≤ 6°C ⁽¹⁾ ?	<u>X</u>			
Is there ice present (document if blue ice is used)?	<u>X</u>			
Are custody seals present on cooler? (if so, document in comments if they are signed and dated, broken or intact)		<u>X</u>		
Are custody seals present on each sample container? (if so, document in comments if they are signed and dated, broken or intact)		<u>X</u>		
Were all samples received intact ⁽¹⁾ ?	<u>X</u>			
Was adequate sample volume provided ⁽¹⁾ ?	<u>X</u>			
Are short holding time analytes or samples with HTs due within 48 hours present ⁽¹⁾ ?	<u>X</u>	<u>X</u>		
Is a chain-of-custody (COC) present and filled out completely ⁽¹⁾ ?	<u>X</u>			
Does the COC agree with the number and type of sample bottles received ⁽¹⁾ ?		<u>X</u>		<u>says 1, brought 2/BJar</u>
Do the sample IDs on the bottle labels match the COC ⁽¹⁾ ?	<u>X</u>			
Is the COC properly relinquished by the client with date and time recorded ⁽¹⁾ ?	<u>X</u>			
For volatiles in water – is there headspace (> ¼ inch bubble) present? If yes, contact client and note in narrative.	<u>X</u>			
Are samples preserved that require preservation and was it checked ⁽¹⁾ ? (note ID of confirmation instrument used in comments) / (preservation is not confirmed for subcontracted analyses in order to insure sample integrity)/(pH < 2 for samples preserved with HNO ₃ , HCL, H ₂ SO ₄) / (pH > 10 for samples preserved with NaAsO ₂ +NaOH, ZnAc+NaOH)			<u>X</u>	
Additional Comments (if any):				

⁽¹⁾If NO, then contact the client before proceeding with analysis and note date/time and person contacted as well as the corrective action to in the additional comments (above) and the case narrative.

Reviewed by (Project Manager)

12/17/2012
Date/Time Reviewed

Origins Laboratory, Inc.

J. Bynon

The results in this report apply to the samples analyzed in accordance with the chain of custody document. This analytical report must be reproduced in its entirety.

Eagle Environmental Consulting, Inc.
8000 W 44th Ave
Wheat Ridge CO 80033

Martin C Eckert III
Project Number: [none]
Project: Noble - Wells Ranch CGF

Background-01@0.5'
12/27/2022 3:15:00PM

Analyte	Result	Min Detection Limit	Reporting Limit	Units	Dilution	Batch	Prepared	Analyzed	Notes
---------	--------	---------------------	-----------------	-------	----------	-------	----------	----------	-------

Origins Laboratory, Inc.
Y212573-01 (Soil)

Boron (DTPA Sorbitol)

Boron	0.111	0.100	mg/L	1	B2L2804	12/28/2022	01/03/2023
-------	-------	-------	------	---	---------	------------	------------

Metals by Saturated Paste by EPA 6010

Calcium	1.25	0.499	meq/L	10	[CALC]	12/29/2022	01/03/2023
Magnesium	ND	0.823	"	"	"	"	"
Sodium	ND	0.435	"	"	"	"	"

pH in Soil by 9045D

pH	8.30		pH Units	1	B2L2910	12/29/2022	12/30/2022
----	------	--	----------	---	---------	------------	------------

SAR by 20B Saturated Paste

SAR	0.261		SAR	1	B2L2908	12/29/2022	01/03/2023
-----	-------	--	-----	---	---------	------------	------------

Specific Conductance Mod. 9050A

Specific Conductance (EC)	0.218	0.00500	mmhos/cm	1	B2L2910	12/29/2022	12/30/2022
---------------------------	-------	---------	----------	---	---------	------------	------------

Table 915 metals by EPA 6020B

Arsenic	2.73	0.0942	mg/kg	10	B2L2801	12/28/2022	12/29/2022
Barium	46.6	9.42	"	"	"	"	"
Cadmium	ND	0.0942	"	"	"	"	"

Origins Laboratory, Inc.



The results in this report apply to the samples analyzed in accordance with the chain of custody document. This analytical report must be reproduced in its entirety.

Eagle Environmental Consulting, Inc.
8000 W 44th Ave
Wheat Ridge CO 80033

Martin C Eckert III
Project Number: [none]
Project: Noble - Wells Ranch CGF

Background-01@0.5'

12/27/2022 3:15:00PM

Analyte	Result	Min Detection Limit	Reporting Limit	Units	Dilution	Batch	Prepared	Analyzed	Notes
---------	--------	---------------------	-----------------	-------	----------	-------	----------	----------	-------

Origins Laboratory, Inc.
Y212573-01 (Soil)

Table 915 metals by EPA 6020B

Copper	ND	9.42	mg/kg	10	B2L2801	12/28/2022	12/29/2022
Lead	ND	9.42	"	"	"	"	"
Nickel	ND	9.42	"	"	"	"	"
Selenium	ND	0.0942	"	"	"	"	"
Silver	ND	0.0942	"	"	"	"	"
Zinc	ND	94.2	"	"	"	"	"

Total Metals by 7196A

Chromium, Hexavalent	ND	0.244	0.5	mg/Kg	1	L656745	12/27/2022	01/04/2023
----------------------	----	-------	-----	-------	---	---------	------------	------------

Origins Laboratory, Inc.



The results in this report apply to the samples analyzed in accordance with the chain of custody document. This analytical report must be reproduced in its entirety.

Eagle Environmental Consulting, Inc.
8000 W 44th Ave
Wheat Ridge CO 80033

Martin C Eckert III
Project Number: [none]
Project: Noble - Wells Ranch CGF

Metals by EPA 6000/7000 Series Methods - Quality Control
Origins Laboratory, Inc.

Analyte	Result	Reporting Limit	Units	Spike Level	Source Result	%REC	%REC Limits	RPD	RPD Limit	Notes
---------	--------	-----------------	-------	-------------	---------------	------	-------------	-----	-----------	-------

Batch B2L2801 - EPA 3050B

Blank (B2L2801-BLK1)

Prepared: 12/28/2022 Analyzed: 12/29/2022

Arsenic	ND	0.000100	mg/kg
Barium	ND	0.0100	"
Cadmium	ND	0.000100	"
Copper	ND	0.0100	"
Lead	ND	0.0100	"
Nickel	ND	0.0100	"
Selenium	ND	0.000100	"
Silver	ND	0.000100	"
Zinc	ND	0.100	"

LCS (B2L2801-BS1)

Prepared: 12/28/2022 Analyzed: 12/29/2022

Arsenic	0.0520	0.000100	mg/kg	0.0500	104	80-120
Barium	5.09	0.0100	"	5.00	102	80-120
Cadmium	0.0528	0.000100	"	0.0500	106	80-120
Copper	0.515	0.0100	"	0.500	103	80-120
Lead	0.0516	0.0100	"	0.0500	103	80-120
Nickel	0.0522	0.0100	"	0.0500	104	80-120
Selenium	0.0505	0.000100	"	0.0500	101	80-120
Silver	0.0528	0.000100	"	0.0500	106	80-120
Zinc	0.506	0.100	"	0.500	101	80-120

Matrix Spike (B2L2801-MS1)

Source: Y212569-01

Prepared: 12/28/2022 Analyzed: 12/29/2022

Arsenic	9.21	0.0926	mg/kg	4.63	3.91	114	75-125
Barium	696	9.26	"	463	227	101	75-125
Cadmium	6.16	0.0926	"	4.63	0.443	124	75-125
Copper	69.0	9.26	"	46.3	17.8	111	75-125
Lead	14.3	9.26	"	4.63	8.96	115	75-125

Origins Laboratory, Inc.



The results in this report apply to the samples analyzed in accordance with the chain of custody document. This analytical report must be reproduced in its entirety.

Eagle Environmental Consulting, Inc.
8000 W 44th Ave
Wheat Ridge CO 80033

Martin C Eckert III
Project Number: [none]
Project: Noble - Wells Ranch CGF

Metals by EPA 6000/7000 Series Methods - Quality Control

Origins Laboratory, Inc.

Analyte	Result	Reporting Limit	Units	Spike Level	Source Result	%REC	%REC Limits	RPD	RPD Limit	Notes
Batch B2L2801 - EPA 3050B										
Matrix Spike (B2L2801-MS1)		Source: Y212569-01			Prepared: 12/28/2022 Analyzed: 12/29/2022					
Nickel	13.4	9.26	mg/kg	4.63	9.05	94.9	75-125			
Selenium	4.65	0.0926	"	4.63	0.314	93.7	75-125			
Silver	5.75	0.0926	"	4.63	0.0745	123	75-125			
Zinc	107	92.6	"	46.3	58.2	105	75-125			
Matrix Spike Dup (B2L2801-MSD1)		Source: Y212569-01			Prepared: 12/28/2022 Analyzed: 12/29/2022					
Arsenic	8.32	0.0897	mg/kg	4.49	3.91	98.4	75-125	10.1	20	
Barium	619	8.97	"	449	227	87.4	75-125	11.8	20	
Cadmium	5.17	0.0897	"	4.49	0.443	105	75-125	17.5	20	
Copper	60.6	8.97	"	44.9	17.8	95.3	75-125	13.0	20	
Lead	13.8	8.97	"	4.49	8.96	107	75-125	3.62	20	
Nickel	13.1	8.97	"	4.49	9.05	90.6	75-125	2.48	20	
Selenium	4.48	0.0897	"	4.49	0.314	92.8	75-125	3.85	20	
Silver	4.67	0.0897	"	4.49	0.0745	102	75-125	20.8	20	QR-02
Zinc	103	89.7	"	44.9	58.2	98.9	75-125	3.93	20	

Origins Laboratory, Inc.



The results in this report apply to the samples analyzed in accordance with the chain of custody document. This analytical report must be reproduced in its entirety.

Eagle Environmental Consulting, Inc.
8000 W 44th Ave
Wheat Ridge CO 80033

Martin C Eckert III
Project Number: [none]
Project: Noble - Wells Ranch CGF

Classical Chemistry Parameters - Quality Control

Origins Laboratory, Inc.

Analyte	Result	Reporting Limit	Units	Spike Level	Source Result	%REC	%REC Limits	RPD	RPD Limit	Notes
---------	--------	-----------------	-------	-------------	---------------	------	-------------	-----	-----------	-------

Batch B2L2804 - DTPA Sorbitol Preparation

Blank (B2L2804-BLK1)

Prepared: 12/28/2022 Analyzed: 01/03/2023

Boron ND 0.100 mg/L

Duplicate (B2L2804-DUP1)

Source: Y212569-08

Prepared: 12/28/2022 Analyzed: 01/03/2023

Boron 0.987 0.100 mg/L 0.940 4.84 50

Batch B2L2908 - Saturated Paste Metals

Blank (B2L2908-BLK1)

Prepared: 12/29/2022 Analyzed: 01/03/2023

SAR 0.00 SAR
Calcium PPM ND 10.0 mg/L
Magnesium PPM ND 10.0 "
Sodium PPM ND 10.0 "

Duplicate (B2L2908-DUP1)

Source: Y212568-01

Prepared: 12/29/2022 Analyzed: 01/03/2023

SAR 0.00 SAR 1.53 200 200
Calcium PPM 518 10.0 mg/L 390 28.1 50
Magnesium PPM 206 10.0 " 142 36.9 50
Sodium PPM 181 10.0 " 139 26.7 50

Origins Laboratory, Inc.



The results in this report apply to the samples analyzed in accordance with the chain of custody document. This analytical report must be reproduced in its entirety.

Jordan A. Bynon, Project Manager

Eagle Environmental Consulting, Inc.
8000 W 44th Ave
Wheat Ridge CO 80033

Martin C Eckert III
Project Number: [none]
Project: Noble - Wells Ranch CGF

Saturated Paste - Quality Control Origins Laboratory, Inc.

Analyte	Result	Reporting Limit	Units	Spike Level	Source Result	%REC	%REC Limits	RPD	RPD Limit	Notes
Batch B2L2910 - Saturated Paste pH/EC										
Blank (B2L2910-BLK1)					Prepared: 12/29/2022 Analyzed: 12/30/2022					
Specific Conductance (EC)	ND	0.00500	mmhos/cm							
Duplicate (B2L2910-DUP1)					Source: Y212568-01 Prepared: 12/29/2022 Analyzed: 12/30/2022					
pH	7.40		pH Units		7.51			1.48	25	
Specific Conductance (EC)	3.78	0.00500	mmhos/cm		2.93			25.2	25	QR-DUP

Origins Laboratory, Inc.



The results in this report apply to the samples analyzed in accordance with the chain of custody document. This analytical report must be reproduced in its entirety.

Eagle Environmental Consulting, Inc.
8000 W 44th Ave
Wheat Ridge CO 80033

Martin C Eckert III
Project Number: [none]
Project: Noble - Wells Ranch CGF

Total Metals by 7196A - Quality Control Waypoint Analytical, LLC.

Analyte	Result	Reporting Limit	Units	Spike Level	Source Result	%REC	%REC Limits	RPD	RPD Limit	Notes
Batch L656745 -										
DUP (L 88325-DUP)		Source: 88325			Prepared: Analyzed: 01/04/2023					
Chromium, Hexavalent	ND	0.503	mg/Kg		<0.503	-		0	20	
MS (L 88325-MS)		Source: 88325			Prepared: Analyzed: 01/04/2023					
Chromium, Hexavalent	32.3	2.5	mg/Kg	39.5	< 0.244	82	75-125			
MSD (L 88325-MSD)		Source: 88325			Prepared: Analyzed: 01/04/2023					
Chromium, Hexavalent	457	50	mg/Kg	601	<24.4	76	75-125			
LCS (LCS)					Prepared: Analyzed: 01/04/2023					
Chromium, Hexavalent	6.19	0.5	mg/Kg	8		77	75-125			
LRB (LRB)					Prepared: Analyzed: 01/04/2023					
Chromium, Hexavalent	ND	0.5	mg/Kg				-			

Origins Laboratory, Inc.



The results in this report apply to the samples analyzed in accordance with the chain of custody document. This analytical report must be reproduced in its entirety.

Eagle Environmental Consulting, Inc.
8000 W 44th Ave
Wheat Ridge CO 80033

Martin C Eckert III
Project Number: [none]
Project: Noble - Wells Ranch CGF

Notes and Definitions

QR-DUP RPD exceeds QC acceptance criteria, this indicates source sample is not homogenous.

QR-02 The RPD result exceeded the QC control limits; however, both percent recoveries were acceptable. Sample results for the QC batch were accepted based on percent recoveries and completeness of QC data.

ND Analyte NOT DETECTED at or above the reporting limit

RPD Relative Percent Difference

All soil results are reported on a wet weight basis.

Origins Laboratory, Inc.



The results in this report apply to the samples analyzed in accordance with the chain of custody document. This analytical report must be reproduced in its entirety.