

Well Latitude / Longitude:

40.29409/-104.475795

Flowline Point A (Lat / Long):

40.294085/-104.475769

Flowline Point B (Lat / Long):

40.293829/-104.475630

Flowline Length (ft):

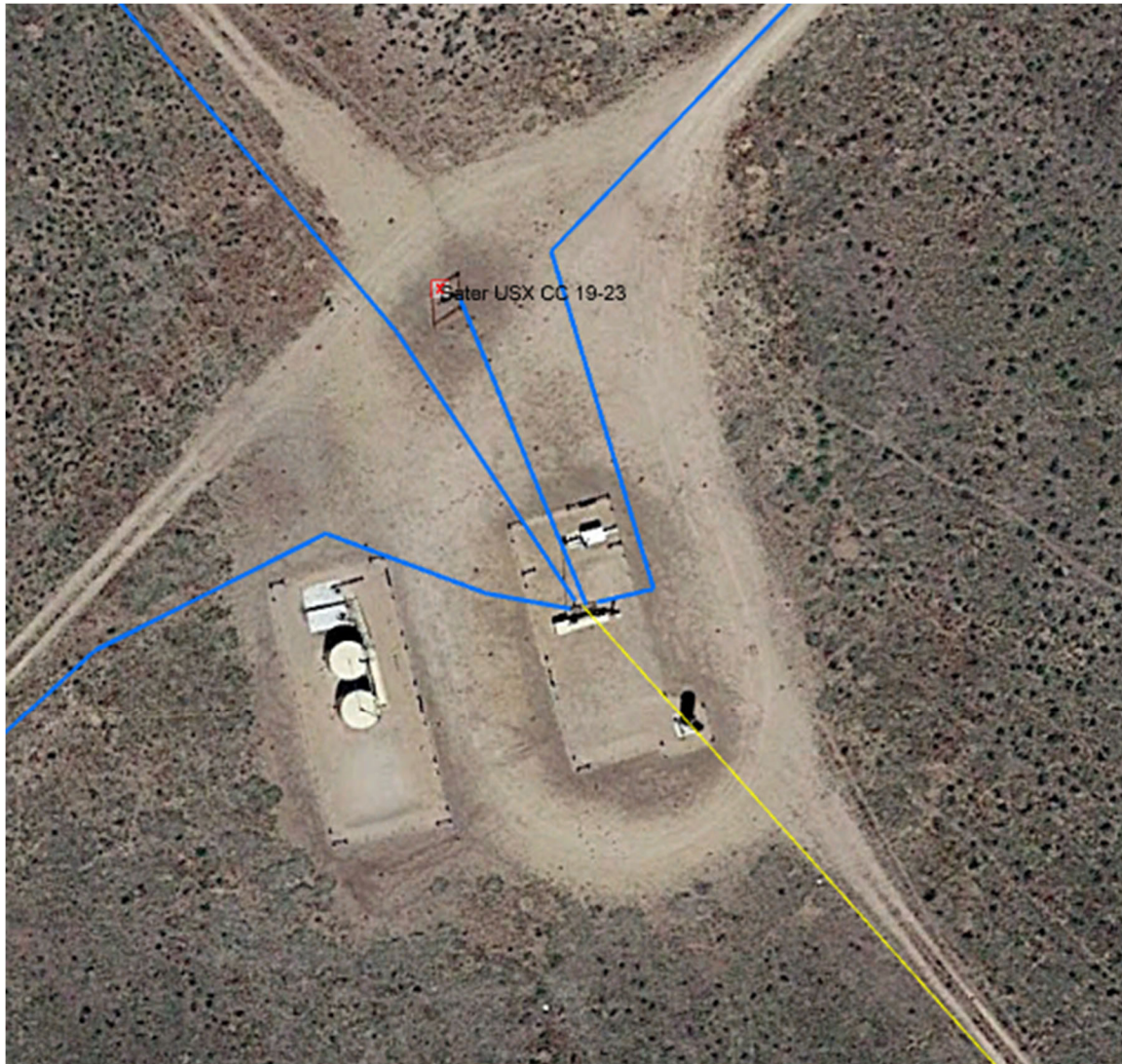
101

Flowline Abandonment Type:

Full Removal

Comments:

X = Denotes Soil Sample Location



Map Created Date:

11-30-2022

Well Name:

SATER USX CC19-23

Map Created By:

Jeff White

Well API:

05-123-24129

the
human Chevron energy
company™