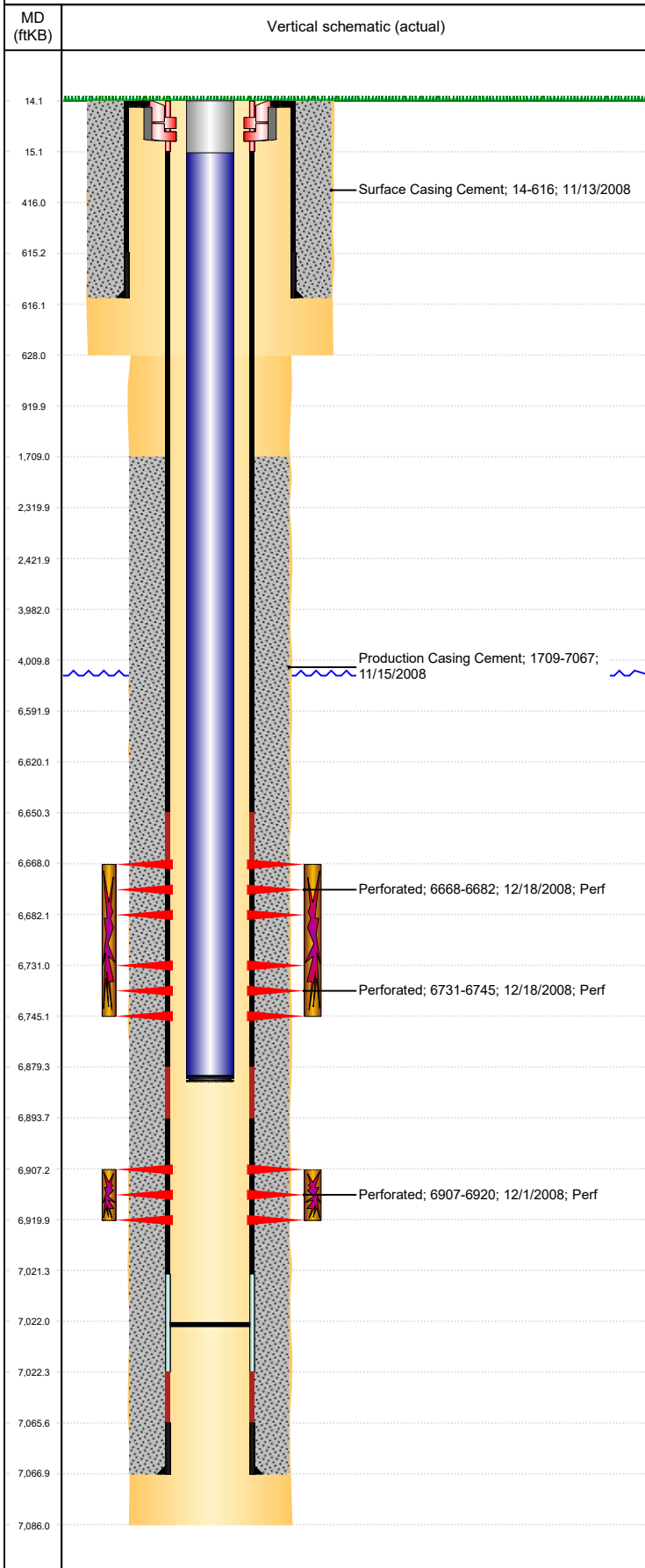




# P&A Wellbore For State

Well Name: THOMPSON C28-23

Land, Original Hole, 1/16/2023 10:49:25 AM



## Well Header

Surface UWI 0512328003		Business Unit Rockies		Gov Auth Dist		Prod Tree Loc Land	
Orig. KB to Gnd (ft) 14.00	Original Spud Date 11/12/2008	Abandon Date		Well Sub-Status SI			High... N
Comment							

## Surface Location (Congressional)

Qtr 3 NE	Qtr 4 SE	Section 28	Twnshp 4	Twnsh... N	Range 64	Rng E/... W	Latitude (°) 40.28003128	Longitude (°) -104.551198353
-------------	-------------	---------------	-------------	---------------	-------------	----------------	-----------------------------	---------------------------------

## Wellbore Sections

Section Des	Hole Size (in)	Act Top (ftKB)	Act Btm (ftKB)
SURFACE	12 1/4	14.0	628.0
PRODUCTION	7 7/8	628.0	7,086.0

## Casing Strings

Csg Des	Run Date	OD (in)	Wt/Len (lb/ft)	Grade	Top Depth (MD) (ftKB)	Set Depth (MD) (ftKB)
Surface	11/12/2008	8 5/8	24.00	J-55	14	616
Production Casing	11/15/2008	4 1/2	11.60	M-80	14.1	7067

## Cement

Des	Start Date	Top (ftKB)	Btm (ftKB)
Surface Casing Cement	11/13/2008	14.0	616.0
Production Casing Cement	11/15/2008	1,709.0	7,067.0

## Zone Statuses

Zone Name	Status Date	Status	Fluid Type	Job	Prod Method
CODELL	12/20/2008	PR	Water	DRILLING/COMPLETION - ORIGINAL, 11/11/200...	Flowing
CODELL	2/2/2010	PR			
NIOBRARA	9/14/2016	PR			
NIOBRARA	11/29/2016	SI			

## Perforation Data

Linked Zone	Explosive Type	Entered Shot Total	Top (ftKB)	Btm (ftKB)	Date
NIOBRARA, Original Hole	A	28	6,668.0	6,682.0	12/18/2008
NIOBRARA, Original Hole	B	28	6,731.0	6,745.0	12/18/2008
CODELL, Original Hole		52	6,907.0	6,920.0	12/1/2008

## Stimulation Intervals

Zone	Start Date	Top (ftKB)	Btm (ftKB)
NIOBRARA, Original Hole	12/18/2008	6,668.0	6,745.0
CODELL, Original Hole	12/18/2008	6,907.0	6,920.0

## Other In Hole

Run Date	Des	Make	OD (in)	Top (ftKB)	Btm (ftKB)

## Logs

Date	Type	Depth Top (MD) (ftKB)	Btm (ftKB)
11/15/2008	Caliper/Comp. Density/Neutron/GR/SP/ML	2,690	7,068.0
11/15/2008	DIL/GR/SP/Caliper	616	7,088.0
12/1/2008	CBL/CCL/GR	1,568	7,030.0

## Plug Back Total Depths

Date	Type	Com	PBTD (ftKB)
11/15/2008	FLOAT COLLAR		7,022
2/11/2009	PLUG REMNANTS		7,022