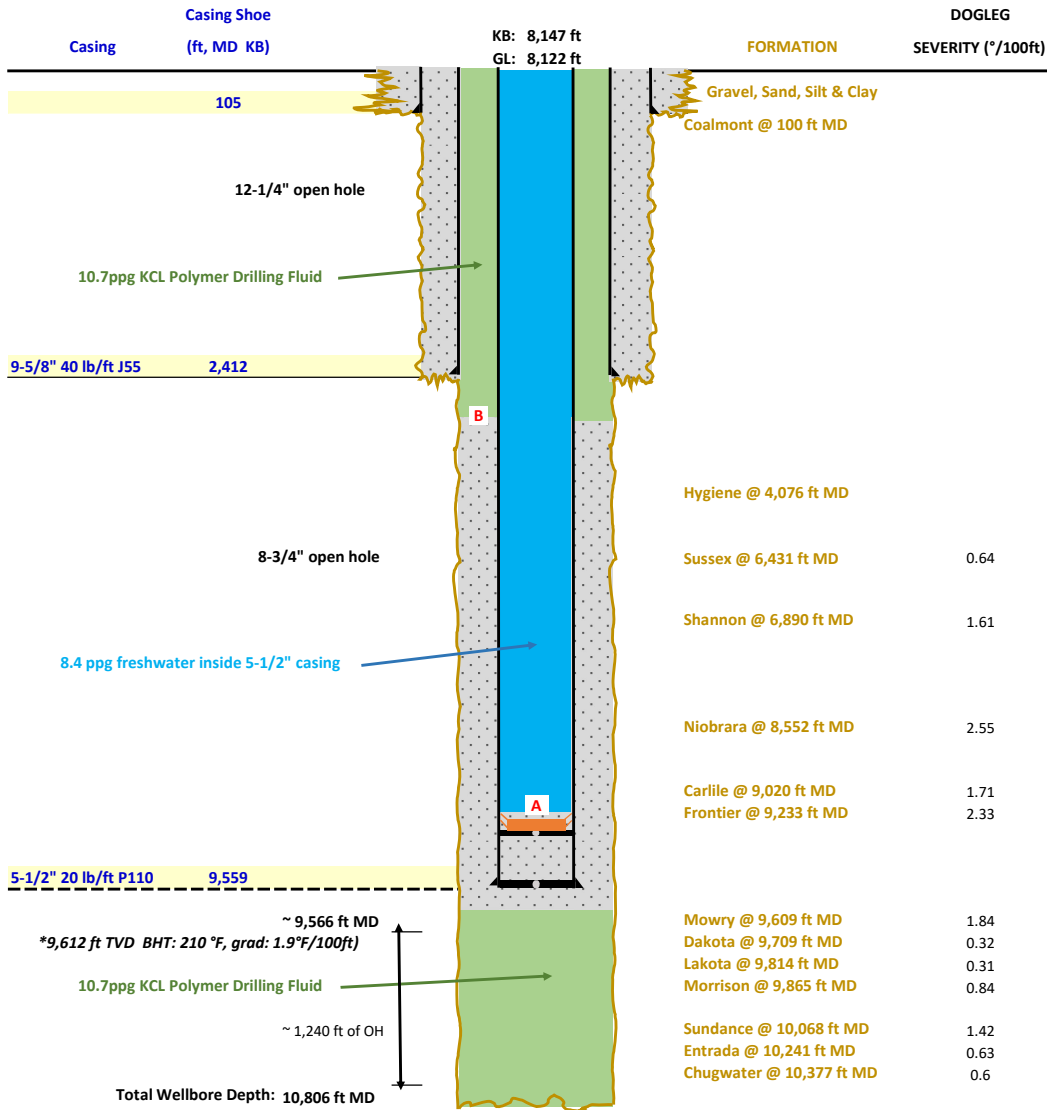


# PRU ALCORN 0880 1-10



**A** Cement Bond Log (11-22-22), **PBTD: 9,497 ft MD**  
5-1/2" csg is full of 8.4ppg freshwater

**B** Production Cmt Top @ ~ 2,970 ft MD

Hygiene @ 4,076 ft MD

Sussex @ 6,431 ft MD

Shannon @ 6,890 ft MD

Niobrara @ 8,552 ft MD

Carlile @ 9,020 ft MD

Frontier @ 9,233 ft MD

Mowry @ 9,609 ft MD

Dakota @ 9,709 ft MD

Lakota @ 9,814 ft MD

Morrison @ 9,865 ft MD

Sundance @ 10,068 ft MD

Entrada @ 10,241 ft MD

Chugwater @ 10,377 ft MD