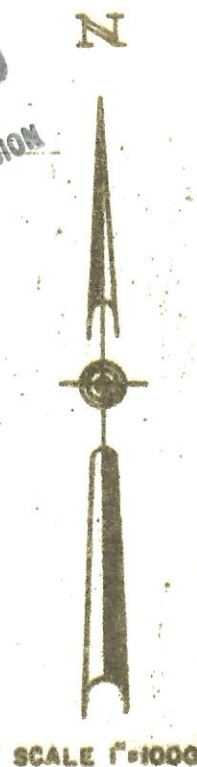
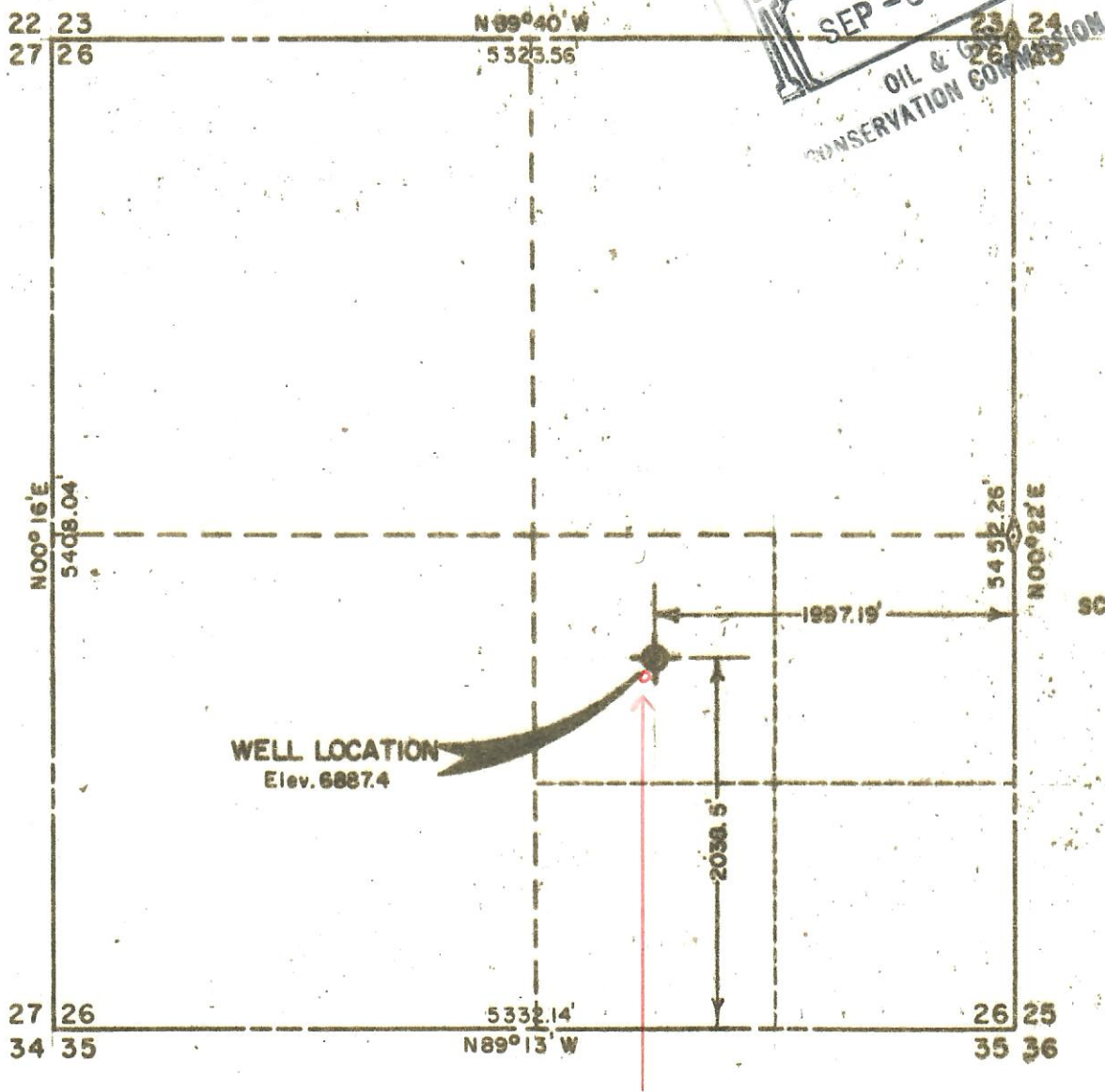
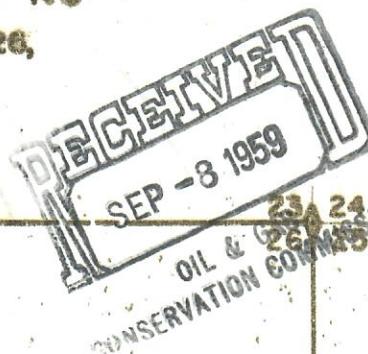


WELL LOCATION
U.S.A. - S. MARVIN JAMES "B" NO
 CENTER NW 1/4 SE 1/4 SEC. 26,
 T. 6 N., R. 86 W., 6th P.M.
 ROUTT COUNTY, COLO.



NOTE: Reference Points:
 200.0' North (Elev. 6905.6)
 200.0' West
 70.0' South
 60.0' East

Location changed to 2009' FSL and 2013' FEL due to topographical reasons.

I, Richard J. Mandeville do hereby certify that this plat was plotted from notes of a field survey made under my supervision on July 14, 1959.

Richard J. Mandeville
 Registered Engineer & Land Surveyor

WESTERN ENGINEERS	
WELL LOCATION	
TENNESSEE GAS TRANS. CO.	
USA-S. MARVIN JAMES "B" NO. 1	
ROUTT COUNTY, COLO.	
SURVEYED	R.R.
DRAWN	J.L.M.
Grand Junction, Colo. 7/16/59	