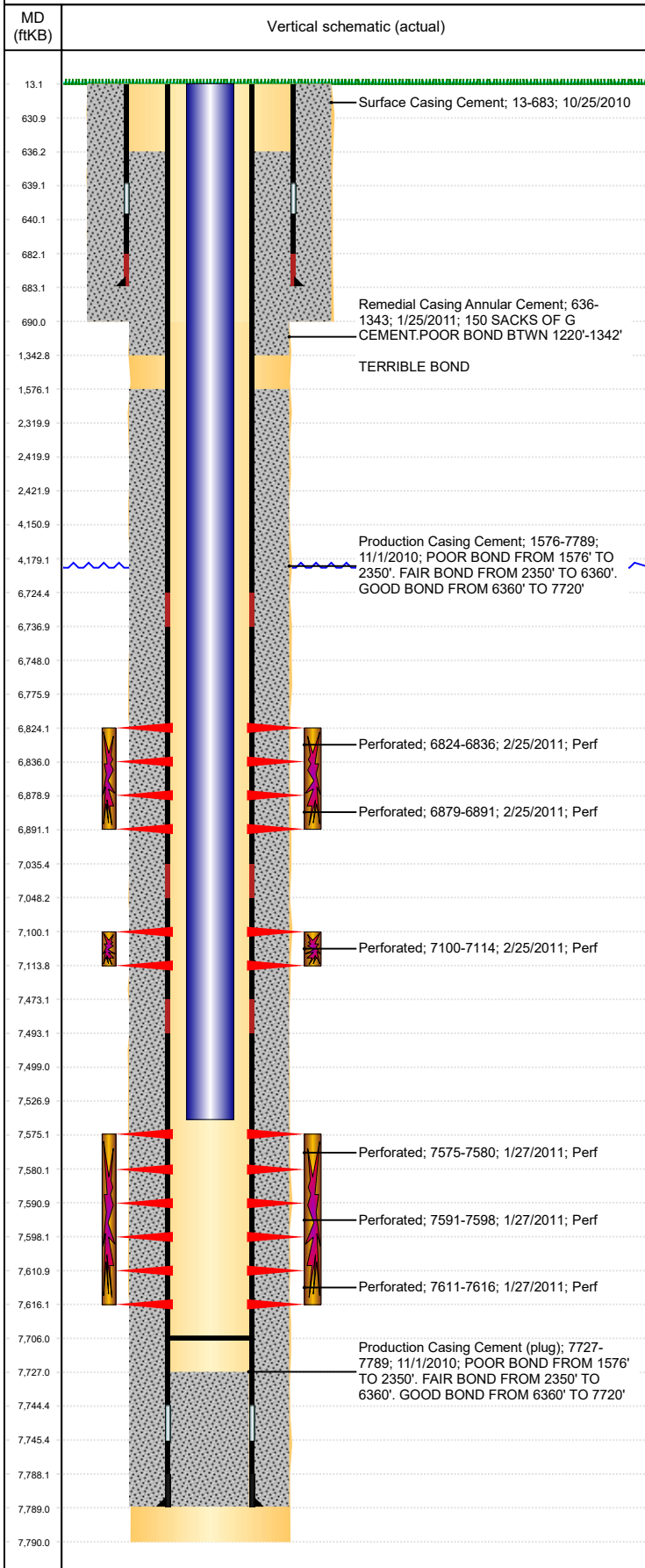




P&A Wellbore For State

Well Name: STROH H12-32

Land, Original Hole, 1/13/2023 4:17:13 PM



Well Header									
Surface UWI 0512330885			Business Unit Rockies			Gov Auth Dist		Prod Tree Loc Land	
Orig. KB to Gnd (ft) 13.00		Original Spud Date 10/25/2010		Abandon Date		Well Sub-Status PR			High... N
Comment 3 7/8" CONE BIT & 1/2 OF PUMP OFF BIT SUB @ 7706' KB.									
Surface Location (Congressional)									
Qtr 3 SW	Qtr 4 NW	Section 12	Twtnshp 3	Twtnsh... N	Range 65	Rng E/... W	Latitude (°) 40.24044009 9	Longitude (°) -104.619851208	
Wellbore Sections									
Section Des			Hole Size (in)			Act Top (ftKB)		Act Btm (ftKB)	
SURFACE			12 1/4			13.0		690.0	
PRODUCTION			7 7/8			690.0		7,790.0	
Casing Strings									
Csg Des		Run Date		OD (in)	Wt/Len (lb/ft)	Grade	Top Depth (MD) (ftKB)	Set Depth (MD) (ftKB)	
Surface		10/25/2010		8 5/8	24.00	J-55	13	683	
Production Casing		11/1/2010		4 1/2	11.60	M-80	13	7789	
Cement									
Des				Start Date		Top (ftKB)		Btm (ftKB)	
Surface Casing Cement				10/25/2010		13.0		683.0	
Production Casing Cement				11/1/2010		1,576.0		7,789.0	
Remedial Casing Annular Cement				1/25/2011		636.0		1,343.0	
Zone Statuses									
Zone Name		Status Date	Status	Fluid Type	Job			Prod Method	
NIOBRARA		2/28/2011	PR		TUBING INSTALLATION, 1/24/2011 00:00				
CODELL		2/28/2011	PR		TUBING INSTALLATION, 1/24/2011 00:00				
J SAND		2/28/2011	PR		COMPLETION, 1/24/2011 00:00				
Perforation Data									
Linked Zone		Explosive Type	Entered Shot Total	Top (ftKB)		Btm (ftKB)		Date	
NIOBRARA, Original Hole		A	24	6,824.0		6,836.0		2/25/2011	
NIOBRARA, Original Hole		B	24	6,879.0		6,891.0		2/25/2011	
CODELL, Original Hole			56	7,100.0		7,114.0		2/25/2011	
J SAND, Original Hole			20	7,575.0		7,580.0		1/27/2011	
J SAND, Original Hole			28	7,591.0		7,598.0		1/27/2011	
J SAND, Original Hole			20	7,611.0		7,616.0		1/27/2011	
Stimulation Intervals									
Zone			Start Date		Top (ftKB)		Btm (ftKB)		
NIOBRARA, Original Hole			2/25/2011		6,824.0		6,891.0		
CODELL, Original Hole			2/25/2011		7,100.0		7,114.0		
J SAND, Original Hole			2/25/2011		7,575.0		7,616.0		
Other In Hole									
Run Date		Des			Make		OD (in)	Top (ftKB)	Btm (ftKB)
Logs									
Date		Type					Depth Top (MD) (ftKB)		Btm (ftKB)
10/30/2010		NO LOGS DUE TO WELL CONTROL ISSUES					13		7,720.0
10/30/2010		NO LOGS DUE TO WELL CONTROL ISSUES							
11/29/2010		CBL/CCL/GR/VDL							
Plug Back Total Depths									
Date		Type		Com				PBTD (ftKB)	
11/29/2010		CEMENT PLUG		DEPTH LOGGER/CBL				7,727	
5/18/2011		FILL		DRILLED OUT 2-CFP AND C/O TO 7706' AND TAG HARD BOT...				7,706	