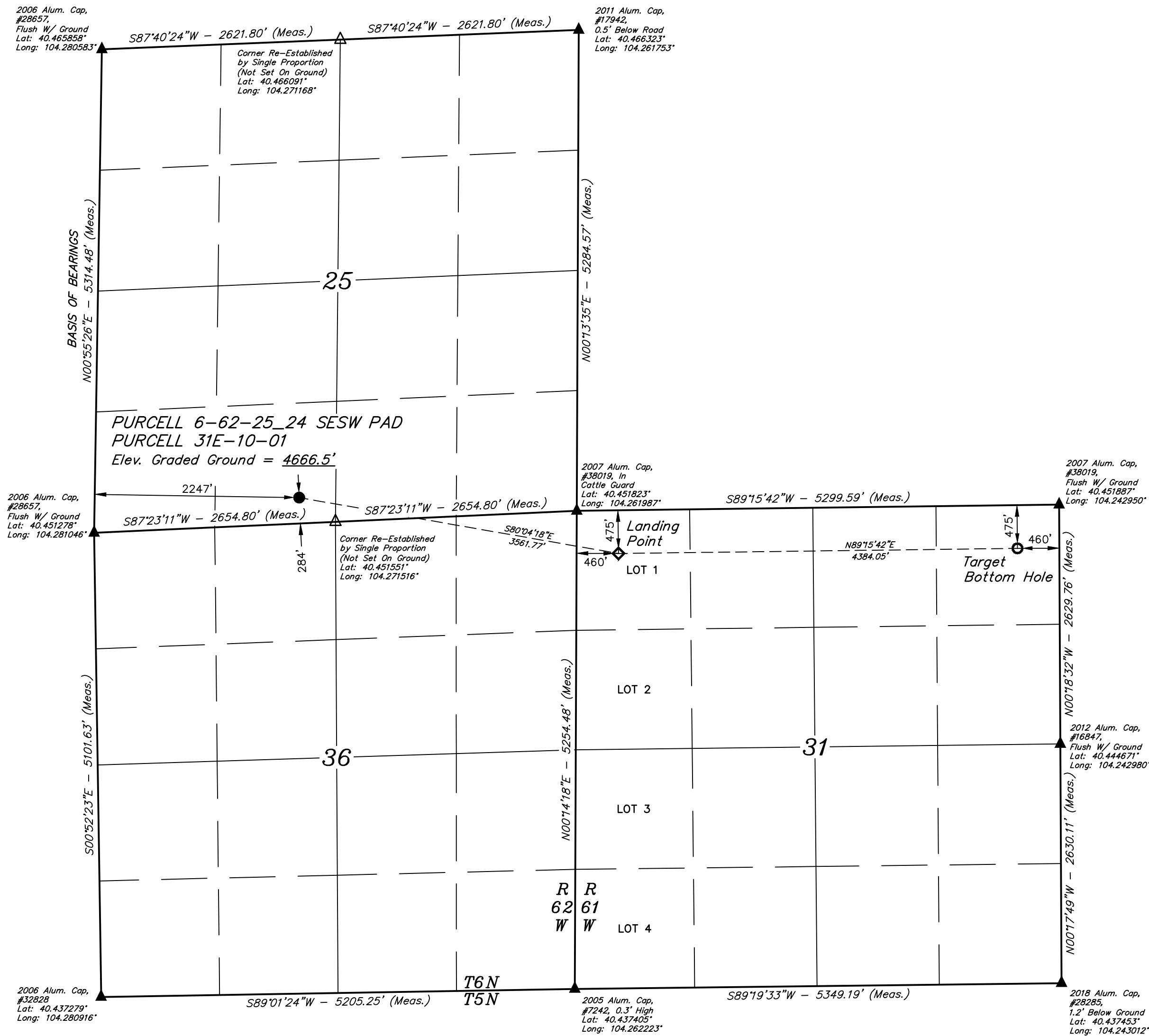


T6N, R62W, 6th P.M.

LEGEND:

- = PROPOSED WELLHEAD.
- ◇ = LANDING POINT.
- = TARGET BOTTOM HOLE.
- ▲ = SECTION CORNERS LOCATED. (NAD 83)
- △ = SECTION CORNERS RE-ESTABLISHED. (Not Set on Ground.) (NAD 83)

NOTE:
Distances referenced on plat to section lines are perpendicular.



CERTIFICATE OF REGISTRATION
THIS IS TO CERTIFY THAT THE ABOVE-NAMED SURVEYOR HAS COMPLETED THE REQUIRED EDUCATION AND EXAMINATION AND IS QUALIFIED TO PERFORM SURVEYING WORK IN THE STATE OF COLORADO.
NOTES OF ACTUAL SURVEYS MADE BY ME OR UNDER MY SUPERVISION AND THAT THE SAME ARE TRUE AND CORRECT TO THE BEST OF MY KNOWLEDGE AND BELIEF.
REGISTERED LAND SURVEYOR
REGISTRATION NO. 28285
STATE OF COLORADO
JULY 22, 2022

PDOP = 1.4



BASIS OF ELEVATION
OPUS SOLUTION GENERATED NAVD 88

UELS, LLC
Corporate Office * 85 South 200 East
Vernal, UT 84078 * (435) 789-1017



HIGHPOINT OPERATING CORPORATION
PURCELL 6-62-25 24 SESW PAD
PURCELL 31E-10-01
SE 1/4 SW 1/4, SECTION 25, T6N, R62W, 6th P.M.
WELD COUNTY, COLORADO
SURVEYED BY GREG WEIMER 10-28-22 SCALE
DRAWN BY L.K. 11-08-22 1" = 1000'
WELL LOCATION PLAT