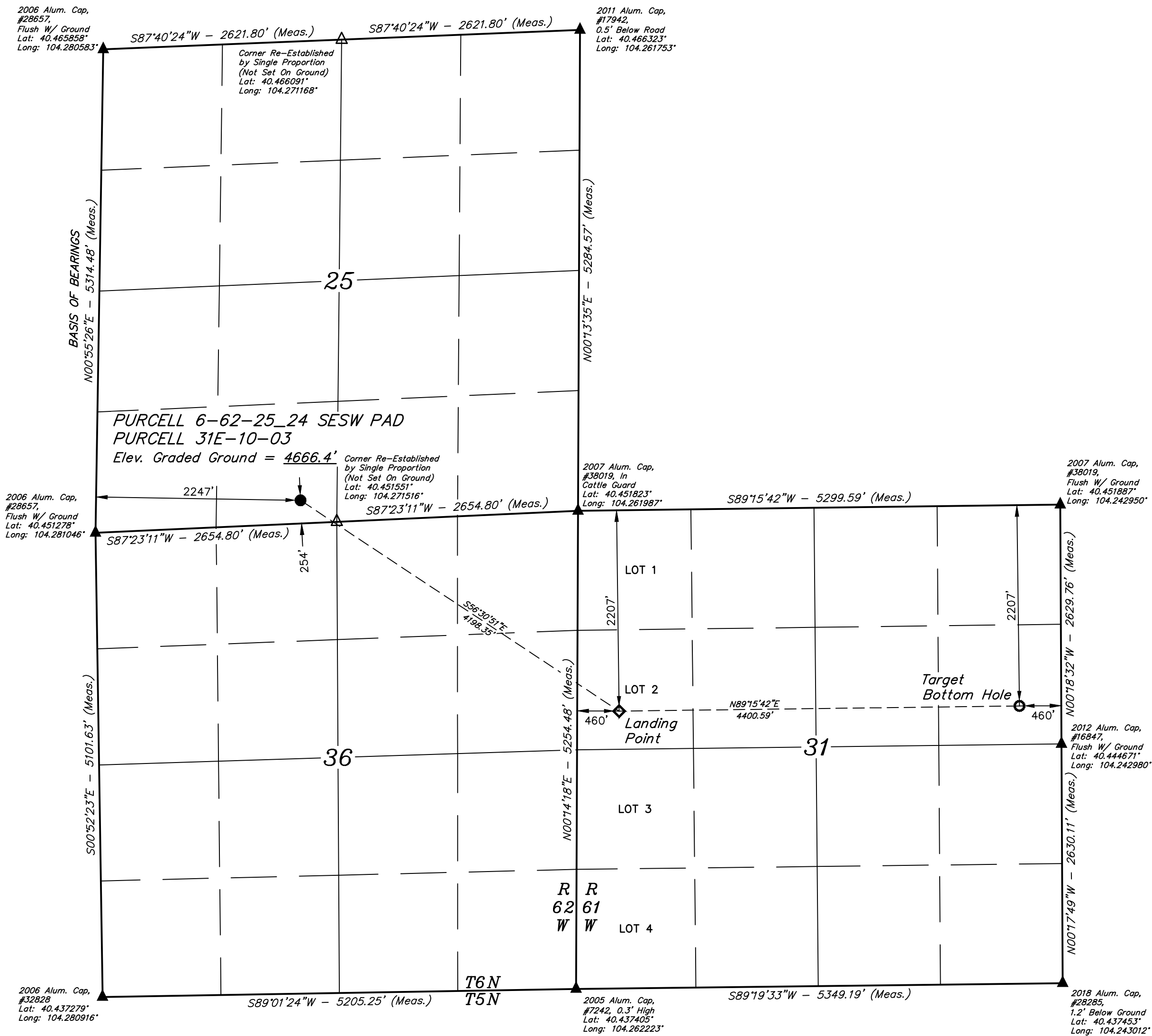


T6N, R62W, 6th P.M.

LEGEND:

- = PROPOSED WELLHEAD.
- ◇ = LANDING POINT.
- = TARGET BOTTOM HOLE.
- ▲ = SECTION CORNERS LOCATED. (NAD 83)
- △ = SECTION CORNERS RE-ESTABLISHED. (Not Set on Ground.) (NAD 83)

NOTE:
Distances referenced on plat to section lines are perpendicular.



CERTIFICATE OF REGISTRATION
THIS IS TO CERTIFY THAT THE ABOVE NOTED SURVEY WAS MADE AND THE NOTES OF ACTUAL SURVEYS MADE BY ME OR UNDER MY SUPERVISION AND THAT THE SAME ARE TRUE AND CORRECT TO THE BEST OF MY KNOWLEDGE AND BELIEF.
REGISTERED LAND SURVEYOR
REGISTRATION NO. 28285
STATE OF COLORADO
JANUARY 22, 2022

PDOP = 1.4



BASIS OF ELEVATION
OPUS SOLUTION GENERATED NAVD 88

UELS, LLC
Corporate Office * 85 South 200 East
Vernal, UT 84078 * (435) 789-1017



HIGHPOINT OPERATING CORPORATION

HIGHPOINT OPERATING CORPORATION

PURCELL 6-62-25 24 SESW PAD
PURCELL 31E-10-03
SE 1/4 SW 1/4, SECTION 25, T6N, R62W, 6th P.M.
WELD COUNTY, COLORADO

SURVEYED BY GREG WEIMER 10-28-22 SCALE
DRAWN BY L.K. 11-08-22 1" = 1000'

WELL LOCATION PLAT

NAD 83 (SURFACE LOCATION)	NAD 83 (LANDING POINT)	NAD 83 (TARGET BOTTOM HOLE)
LATITUDE = 40°27'07.95" (40.452208°)	LATITUDE = 40°26'44.78" (40.445772°)	LATITUDE = 40°26'44.97" (40.445825°)
LONGITUDE = 104°16'22.59" (104.272941°)	LONGITUDE = 104°15'37.56" (104.260433°)	LONGITUDE = 104°14'40.66" (104.244627°)
NAD 27 (SURFACE LOCATION)	NAD 27 (LANDING POINT)	NAD 27 (TARGET BOTTOM HOLE)
LATITUDE = 40°27'08.01" (40.452225°)	LATITUDE = 40°26'44.84" (40.445789°)	LATITUDE = 40°26'45.03" (40.445842°)
LONGITUDE = 104°16'20.77" (104.272435°)	LONGITUDE = 104°15'35.74" (104.259928°)	LONGITUDE = 104°14'38.84" (104.244122°)
STATE PLANE NAD 83 (CO. NORTH)	STATE PLANE NAD 83 (CO. NORTH)	STATE PLANE NAD 83 (CO. NORTH)
N: 1409942.20' E: 3341474.45'	N: 1407646.23' E: 3344987.79'	N: 1407727.57' E: 3349386.24'
STATE PLANE NAD 27 (CO. NORTH)	STATE PLANE NAD 27 (CO. NORTH)	STATE PLANE NAD 27 (CO. NORTH)
N: 409943.25' E: 2341624.23'	N: 407647.33' E: 2345137.61'	N: 407728.65' E: 2349536.12'