



VDL CCL
GAMMA RAY
CEMENT BOND LOG

Company CHEVRON
Well FIVE RIVERS K08-24D
Field WATTENBURG
County WELD
State COLORADO

Company CHEVRON
Well FIVE RIVERS K08-24D
Field WATTENBURG
County WELD State COLORADO

Location: API #: 05-123-32436
SEC 8 TWP 4 RGE 66
Permanent Datum GL Elevation 4,703
Log Measured From KB
Drilling Measured From KB
Other Services N/A
Elevation K.B: 4,719
D.F: 4,718
G.L: 4,703

Date	10-6-22
Run Number	ONE
Depth Driller	7548'
Depth Logger	2500'
Bottom Logged Interval	2500'
Top Log Interval	SURFACE
Casing Driller	N/A
Casing Logger	N/A
Bit Size	N/A
Type Fluid in Hole	WATER
Density / Viscosity	N/A
pH / Fluid Loss	N/A
Source of Sample	N/A
Rm @ Meas. Temp	N/A
Rmf @ Meas. Temp	N/A
Rmc @ Meas. Temp	N/A
Source of Rmf / Rmc	N/A
Rm @ BHT	N/A
Time Circulation Stopped	N/A
Time Logger on Bottom	N/A
Maximum Recorded Temperature	473
Equipment Number	473
Location	GREELEY, CO
Recorded By	ZION DIONNE
Witnessed By	BRANDON TRACY

<<< Fold Here >>>

All interpretations are opinions based on inferences from electrical or other measurements and we cannot and do not guarantee the accuracy or correctness of any interpretation, and we shall not, except in the case of gross or willful negligence on our part, be liable or responsible for any loss, costs, damages, or expenses incurred or sustained by anyone resulting from any interpretation made by any of our officers, agents or employees. These interpretations are also subject to our general terms and conditions set out in our current Price Schedule.

Comments

LOG RAN PER CUSTOMER REQUEST
DEPTH REFERENCED TO KB
ZERO PRESSURE APPLIED
MAIN PASS 2500' TO SURFACE
SURFACE STRING 8 5/8 24# DEPTH 607'
PRODUCTION STRING 4.5" 11.6# DEPTH 7548'

THANK YOU FOR USING A-PLUS WELL SERVICE



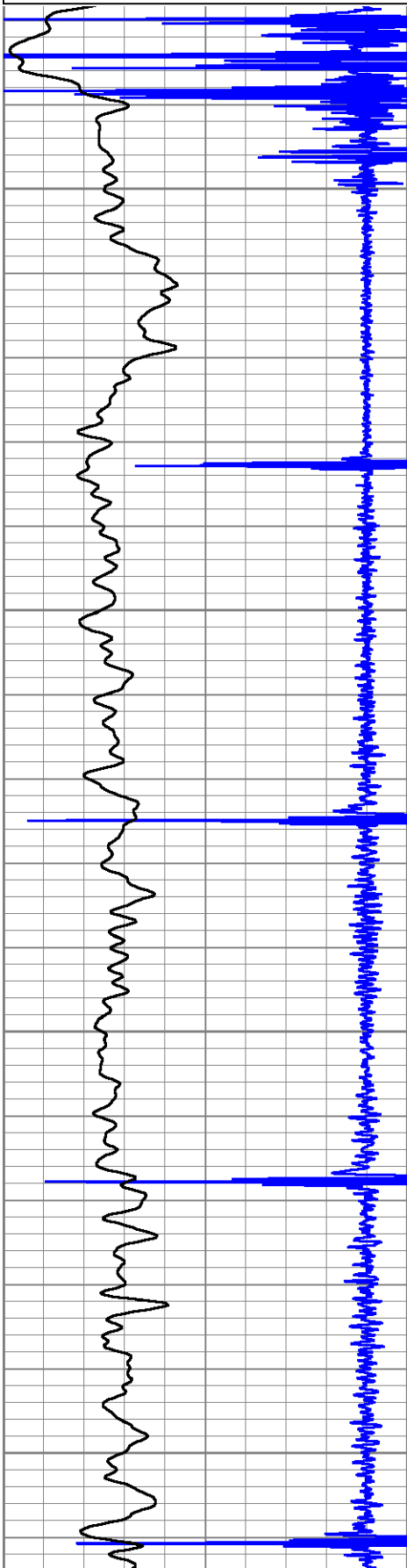
MAIN PASS

Database File 10-6-22.db
 Dataset Pathname pass9
 Presentation Format cbl_dr
 Dataset Creation Thu Oct 06 16:21:03 2022
 Charted by Depth in Feet scaled 1:240

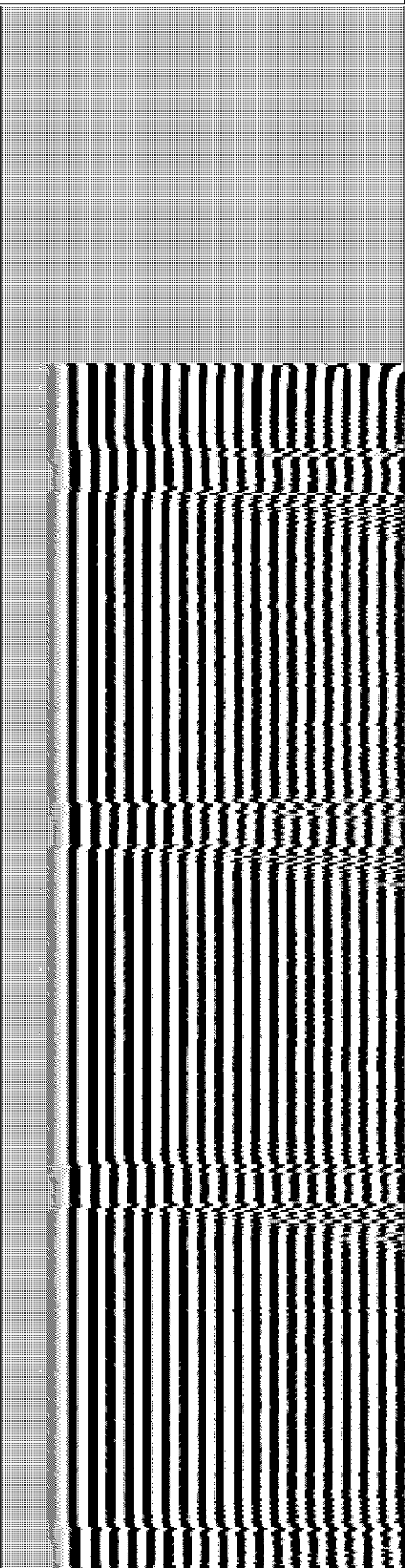
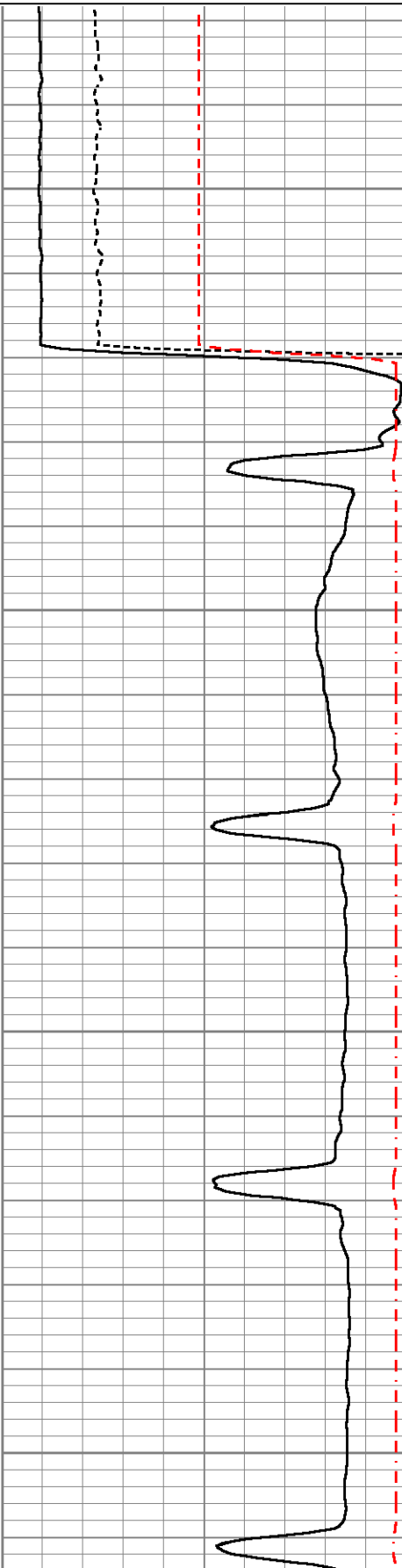
9	Collar Locator	-1
0	Gamma Ray (GAPI)	250

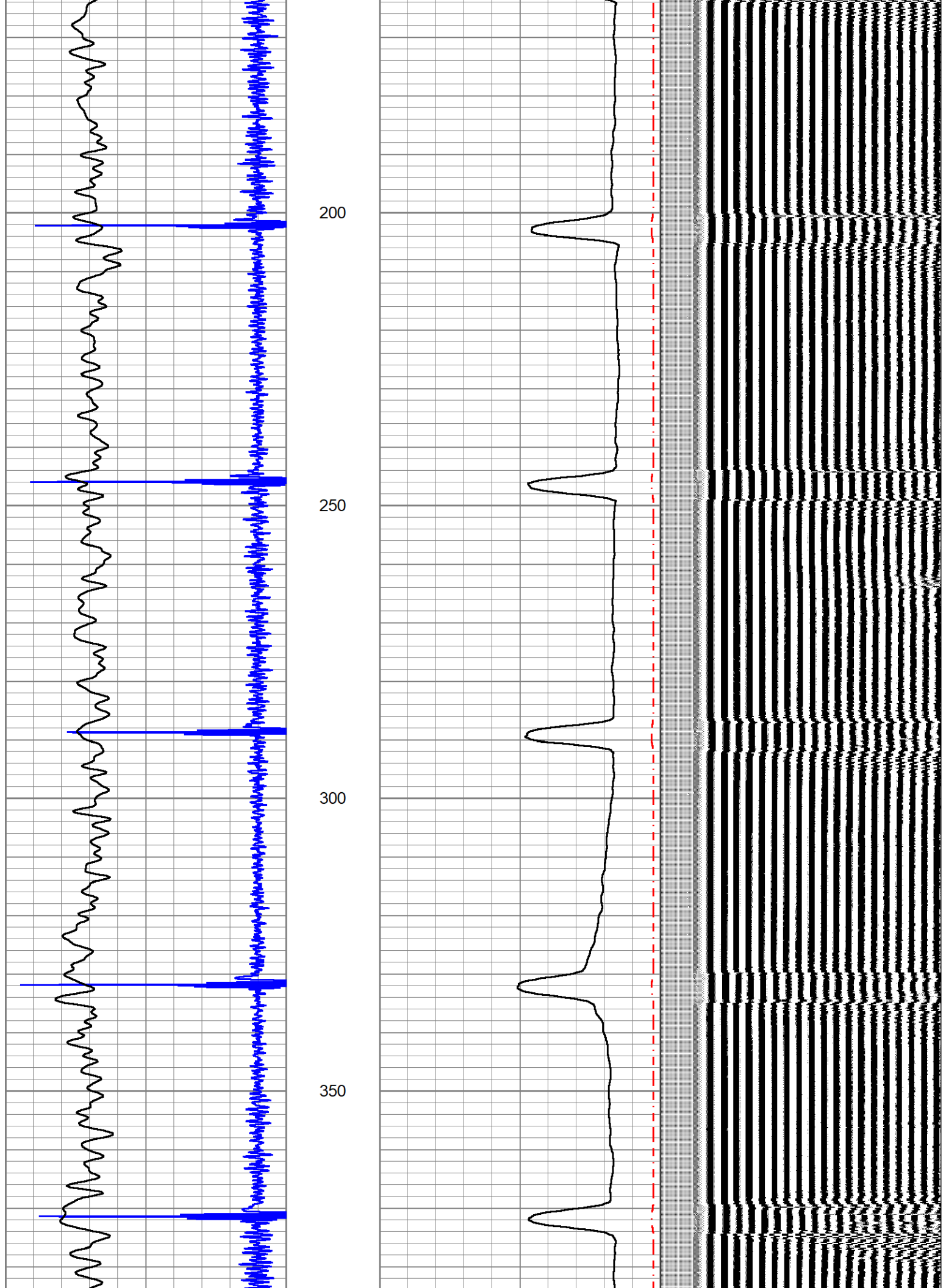
0	Amplified Amplitude (mV)	40
0	Amplitude (mV)	100
1200	TT3FT (usec)	200

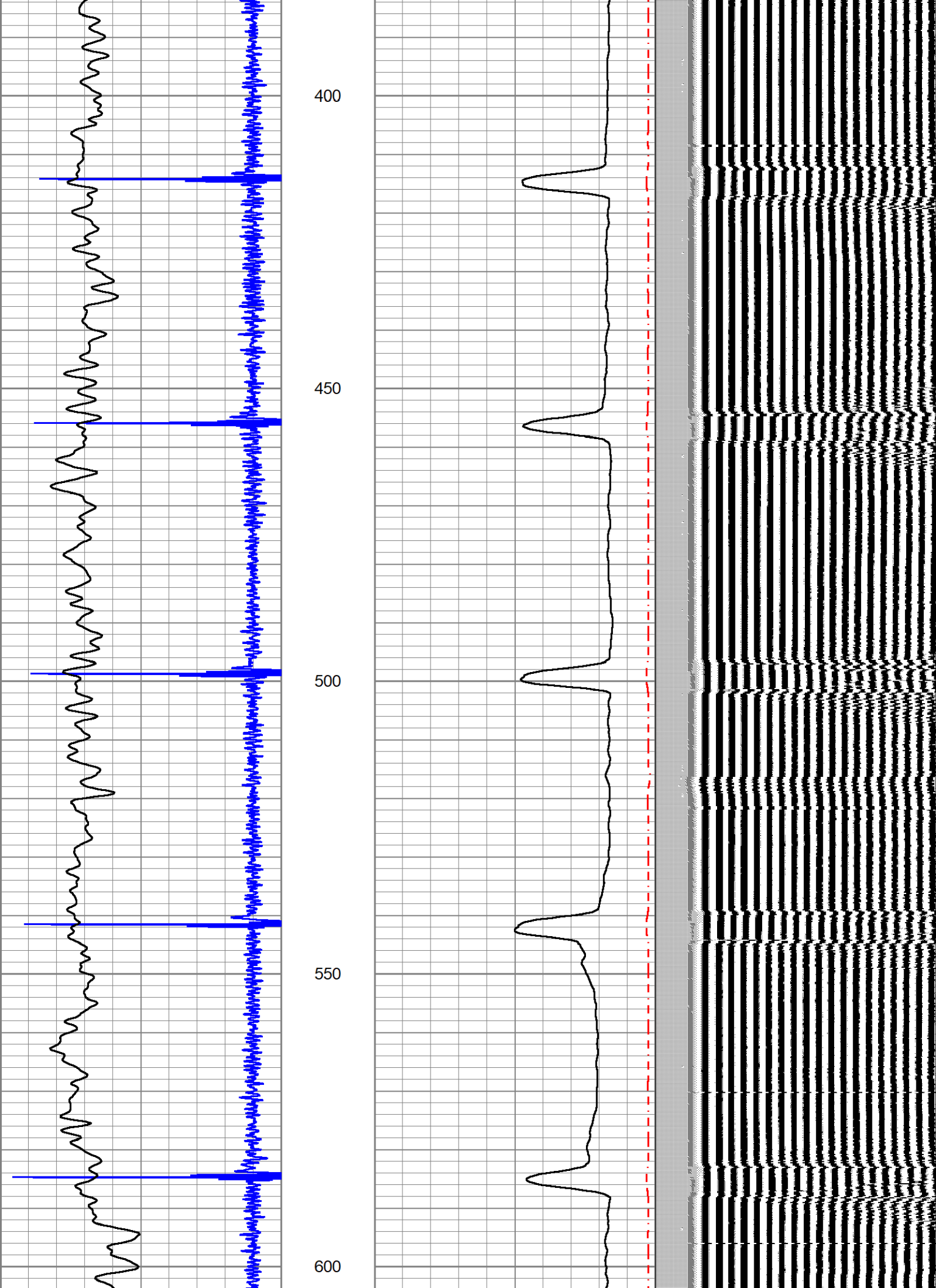
200 VDL (usec) 1200

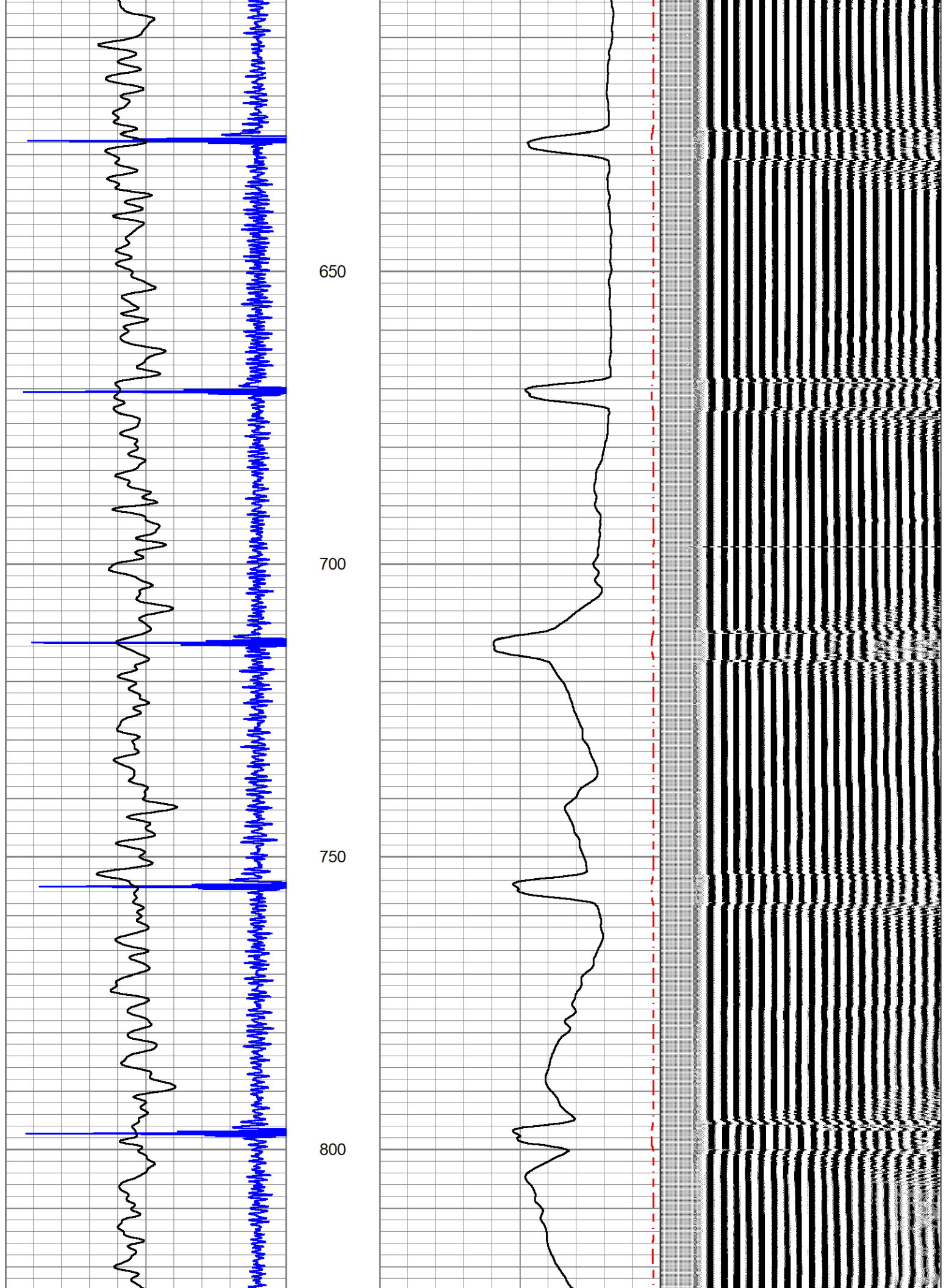


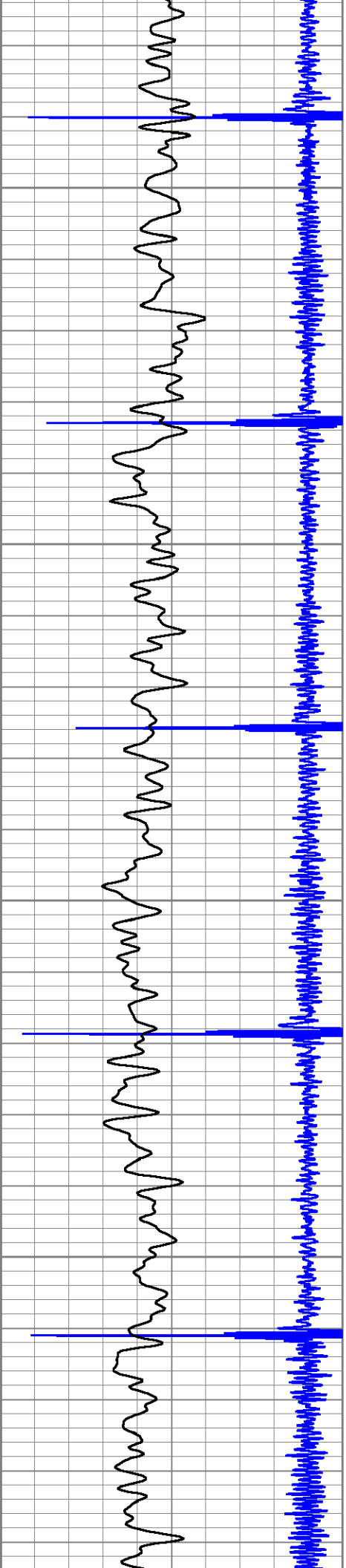
0
50
100
150









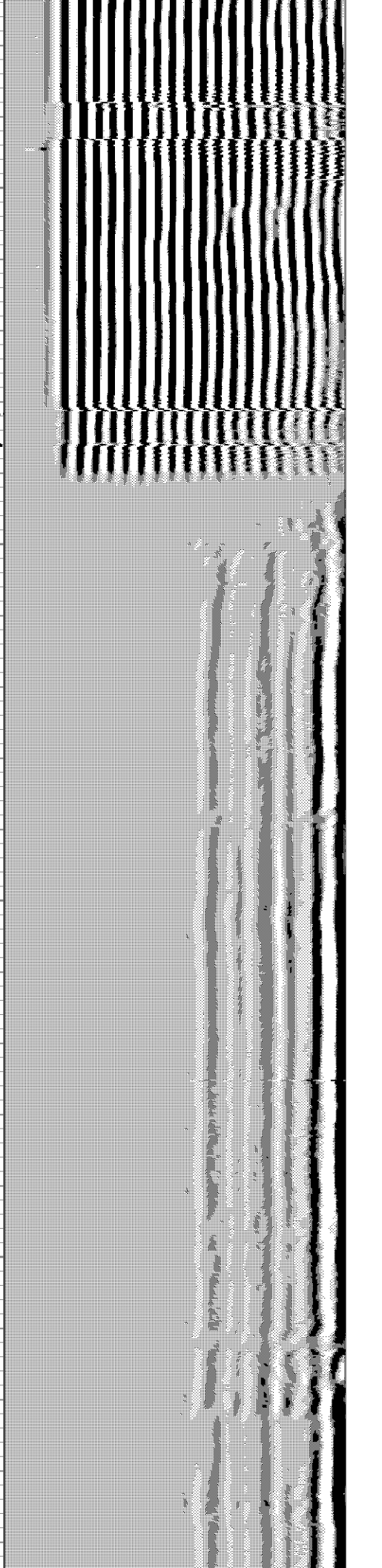
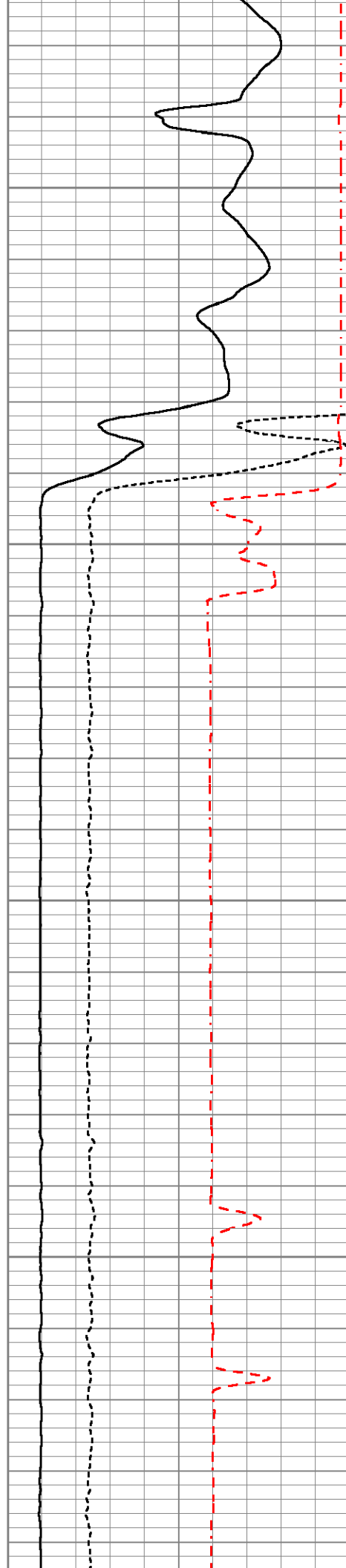


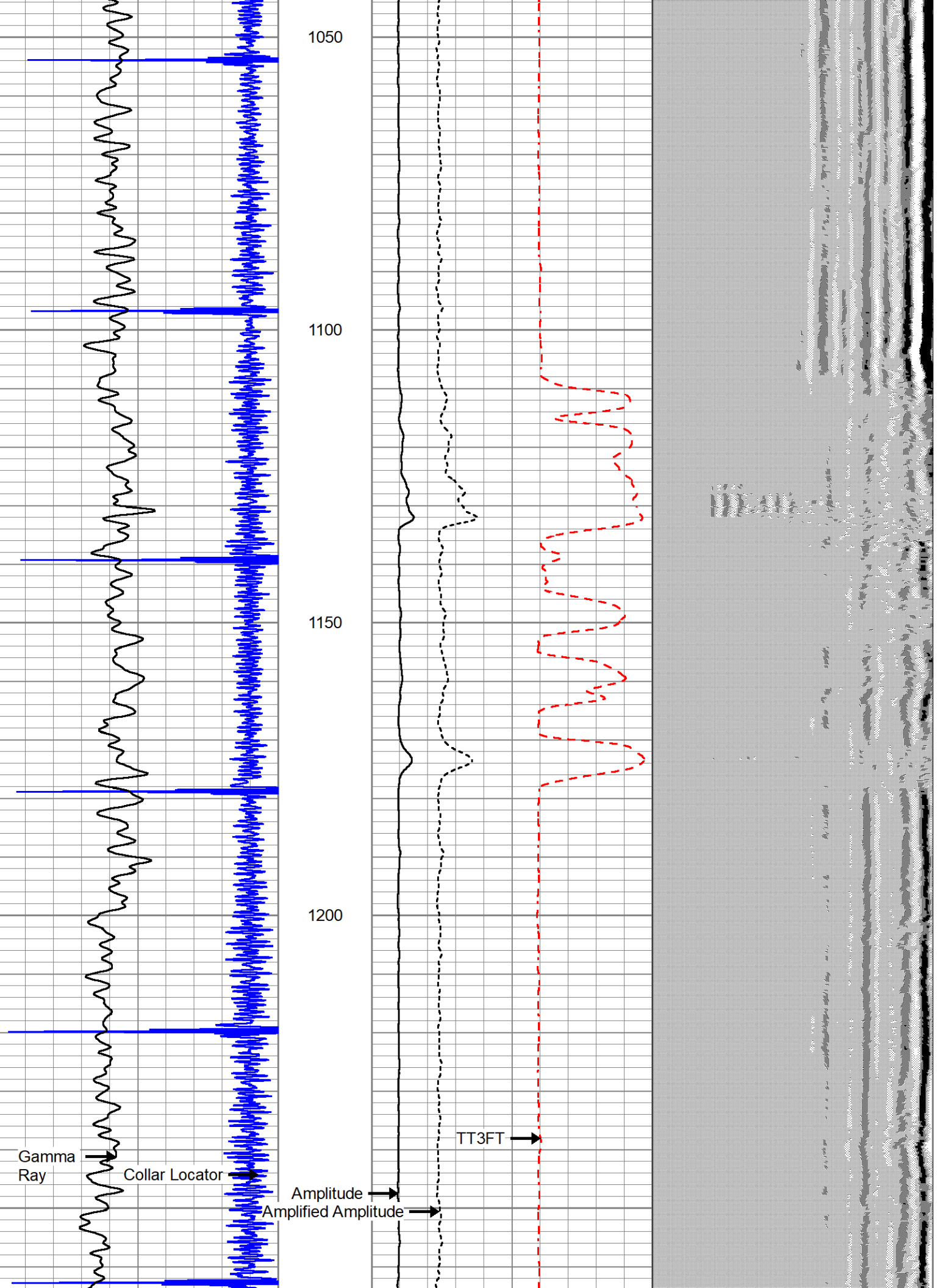
850

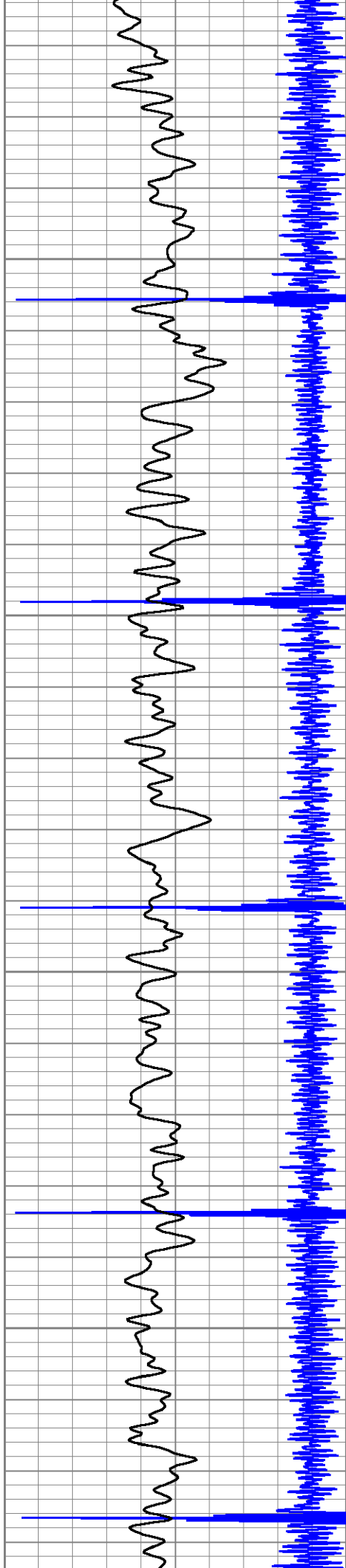
900

950

1000





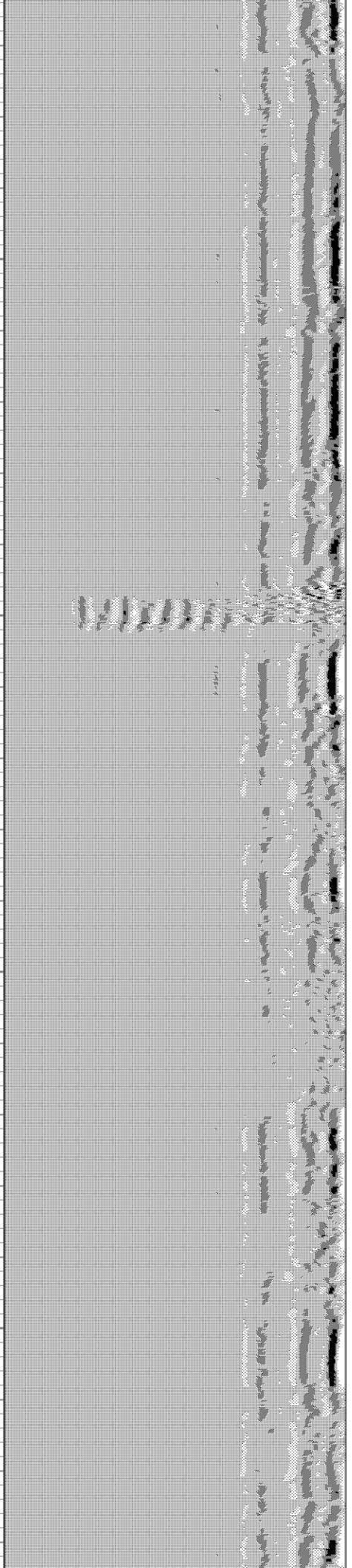
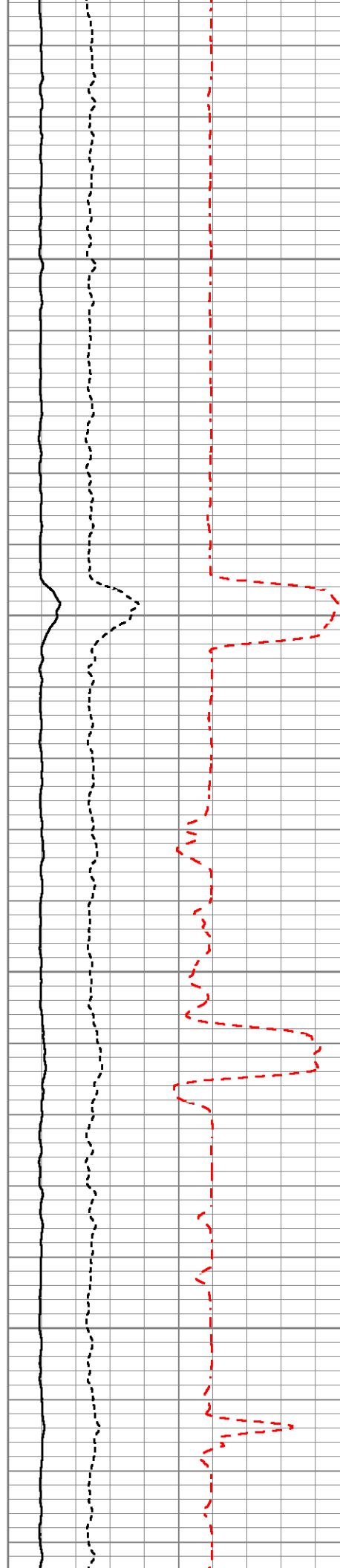


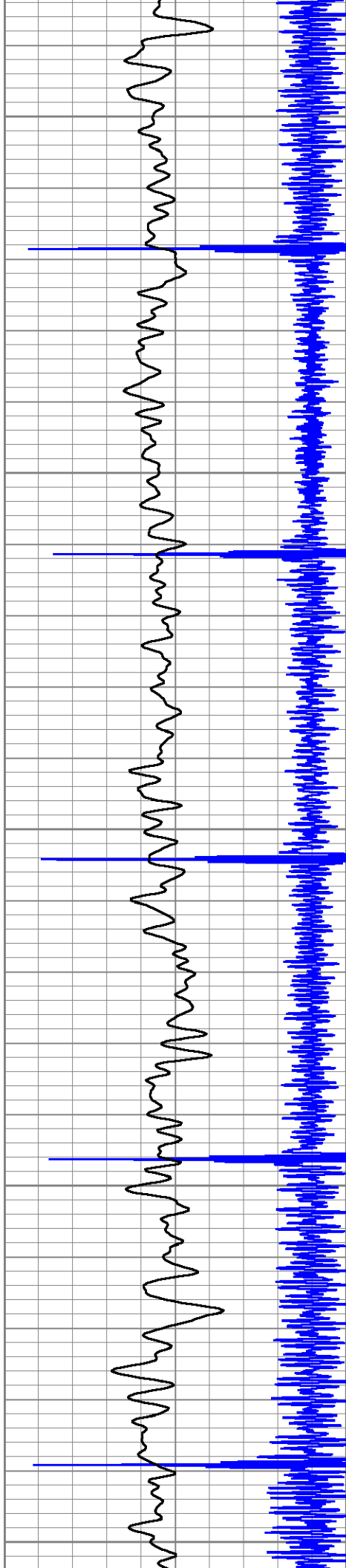
1300

1350

1400

1450





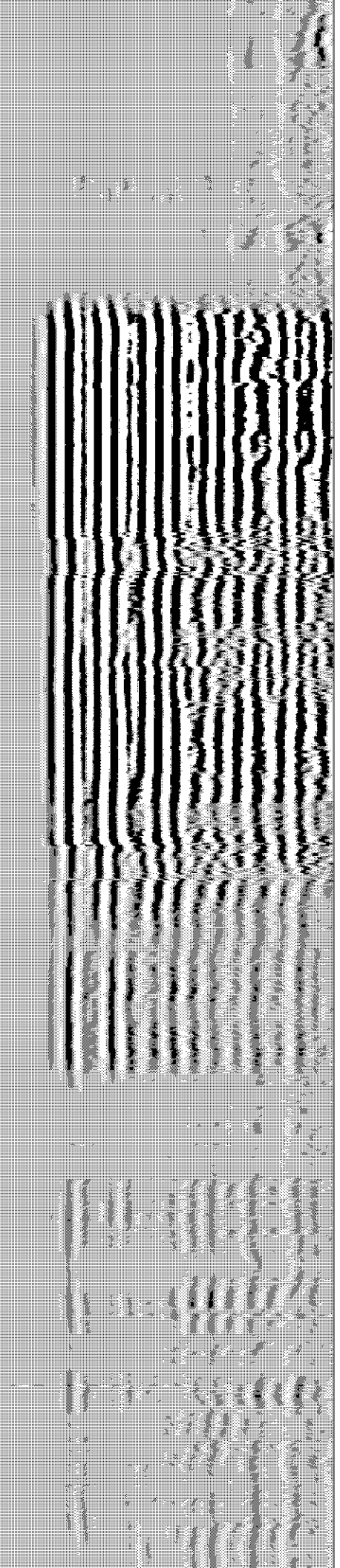
1500

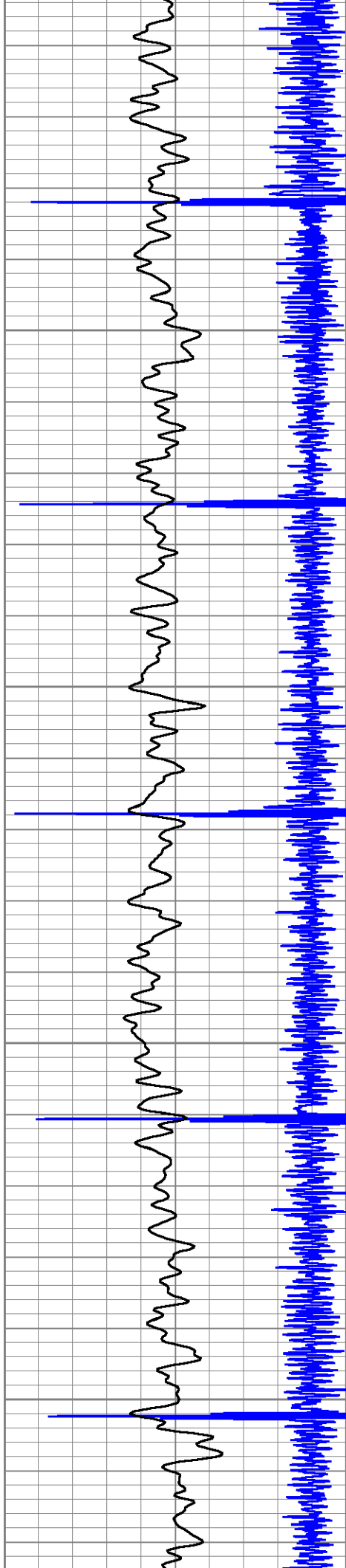
1550

1600

1650

1700



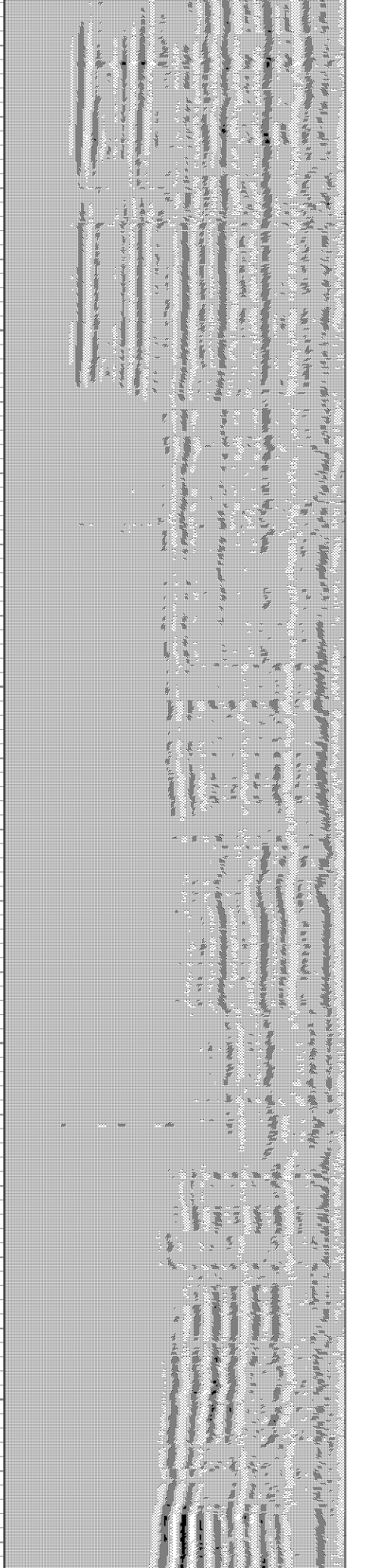


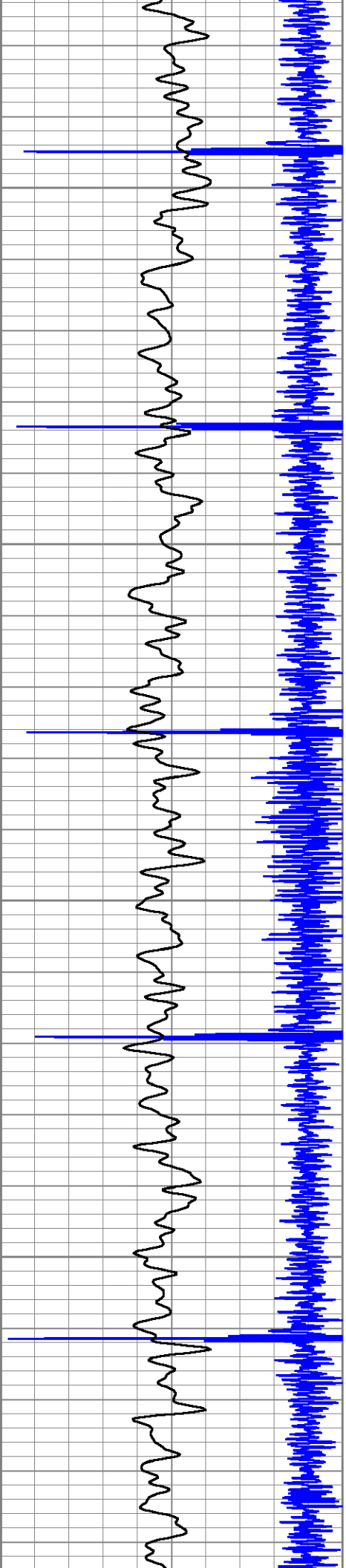
1750

1800

1850

1900



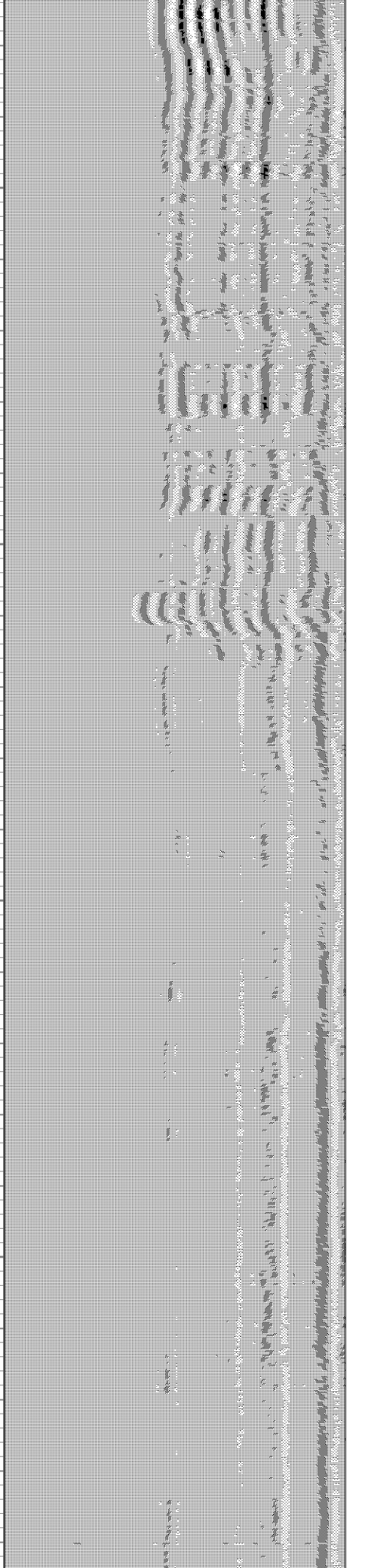


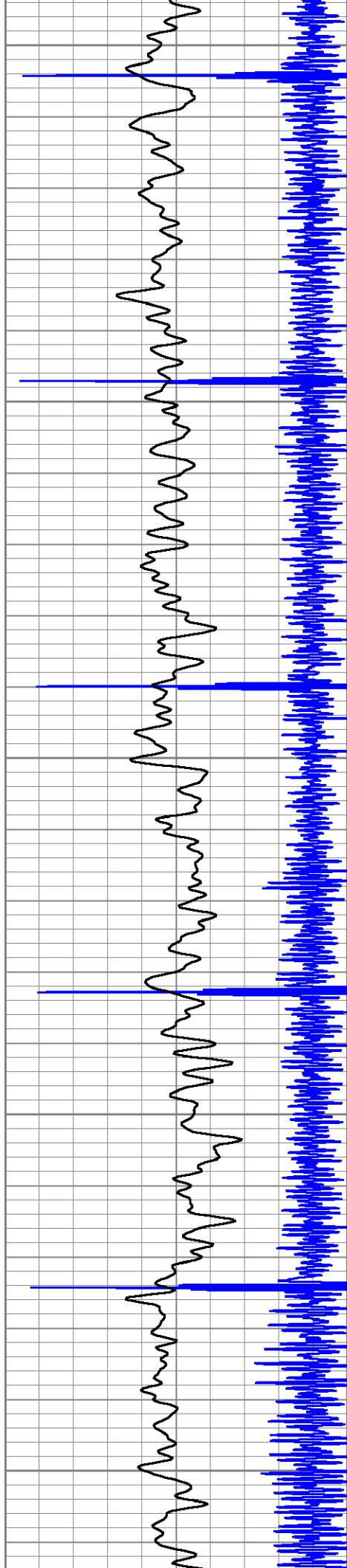
1950

2000

2050

2100





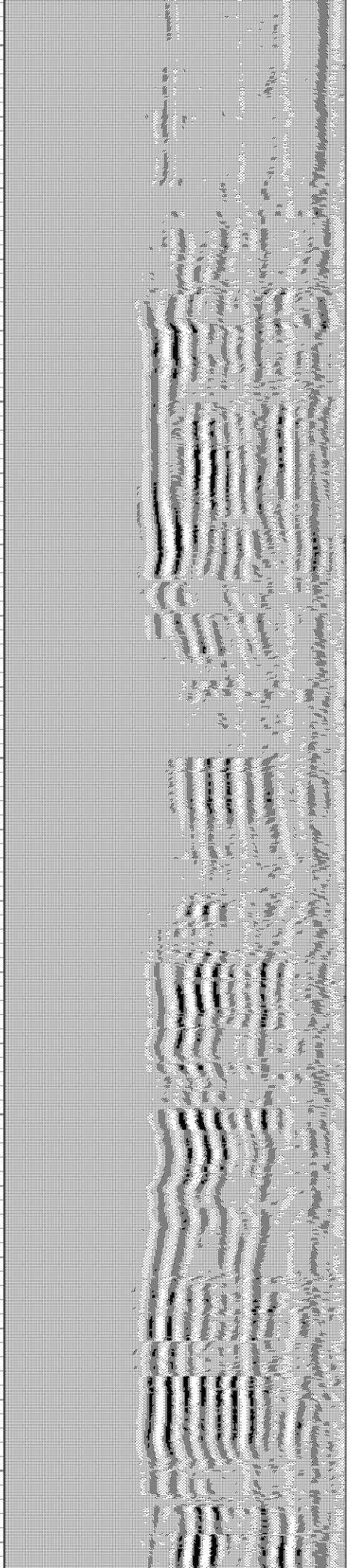
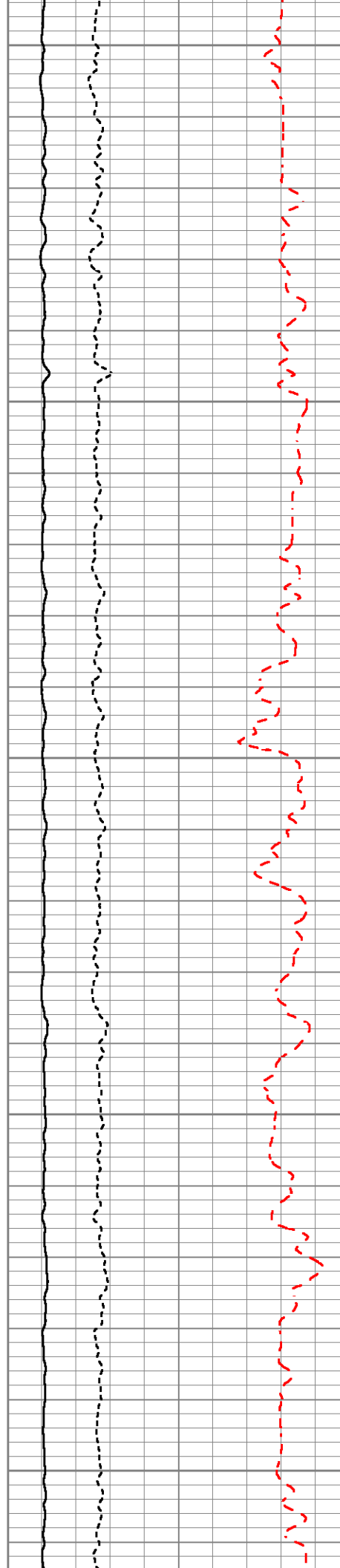
2150

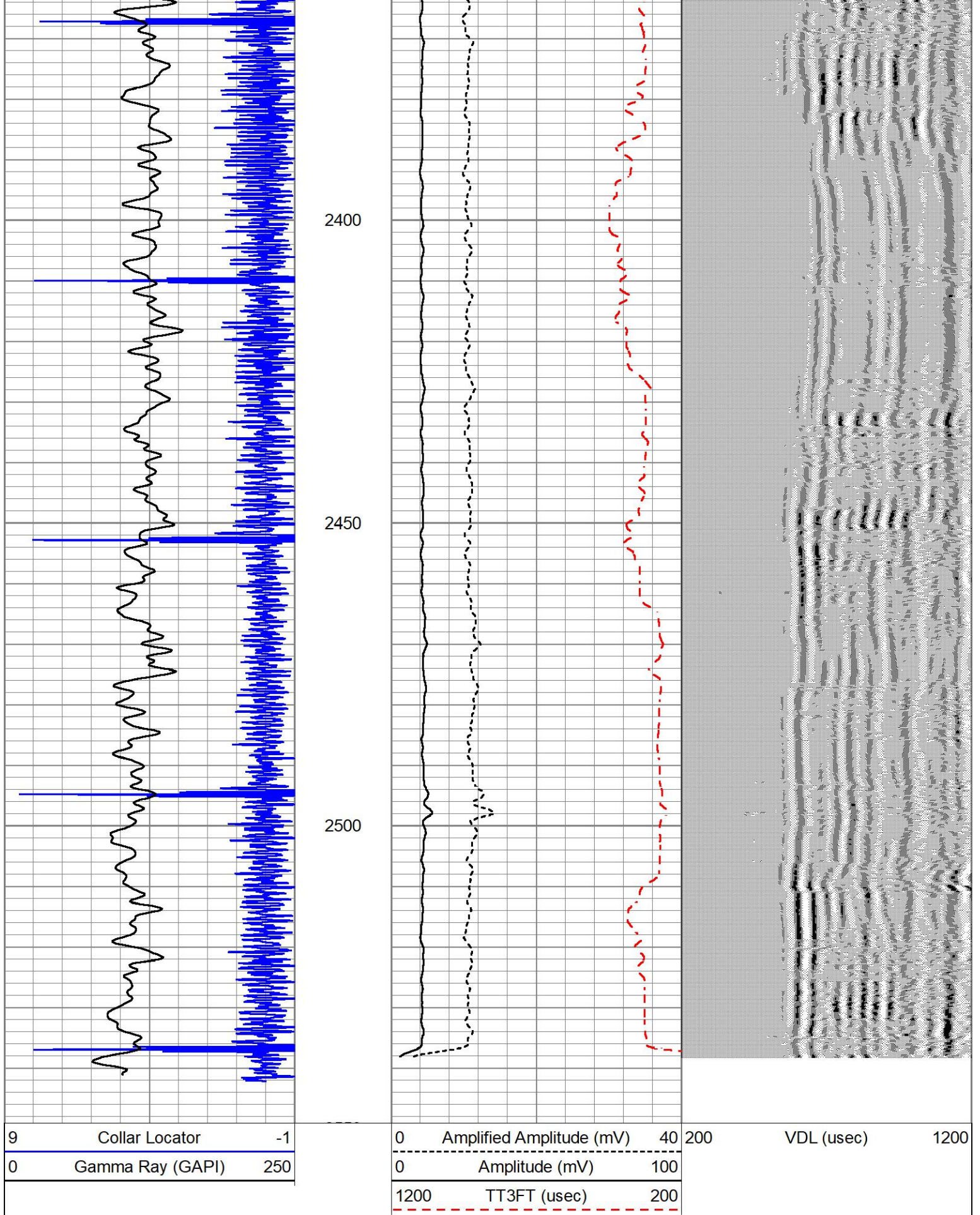
2200

2250

2300

2350

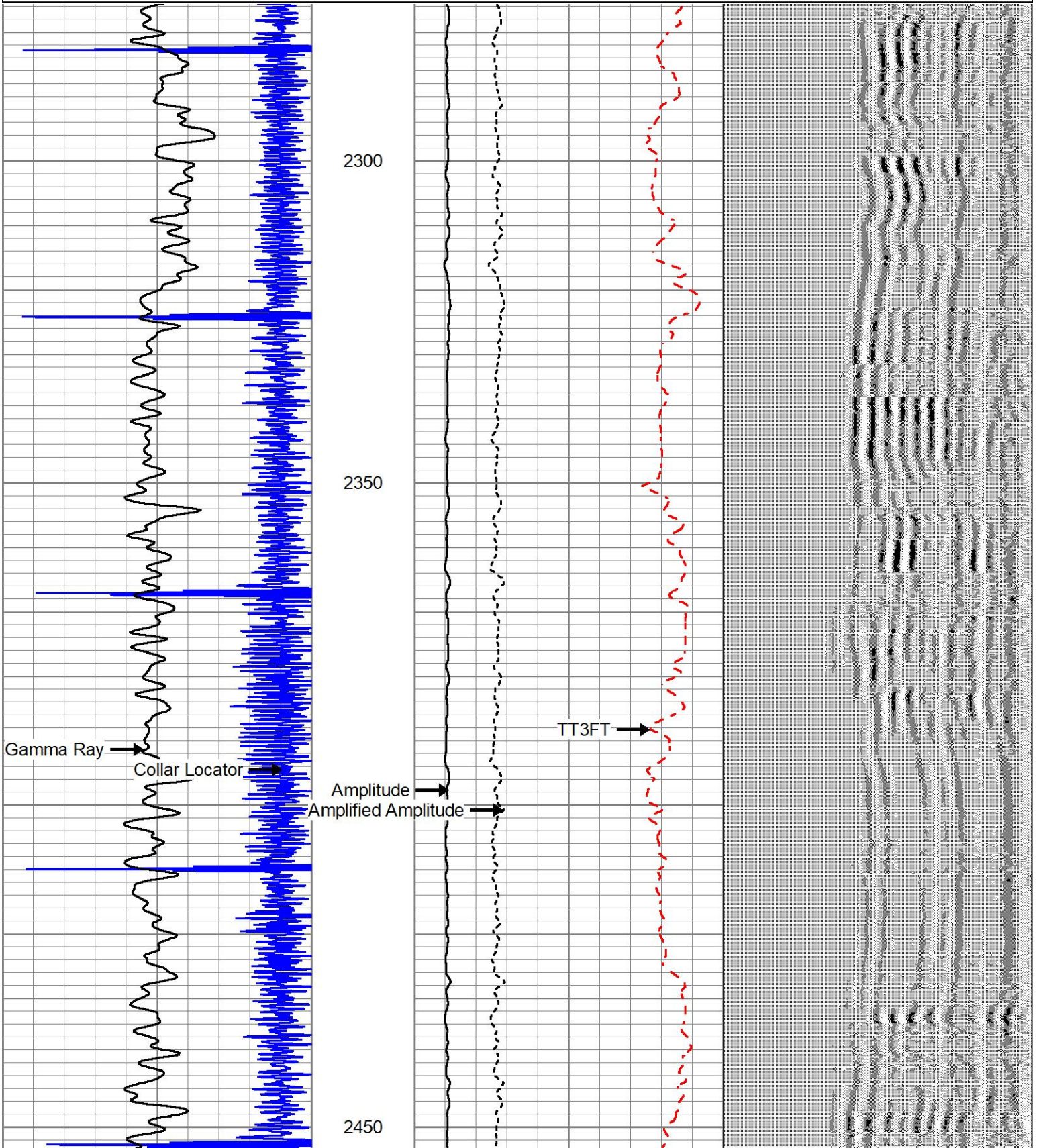


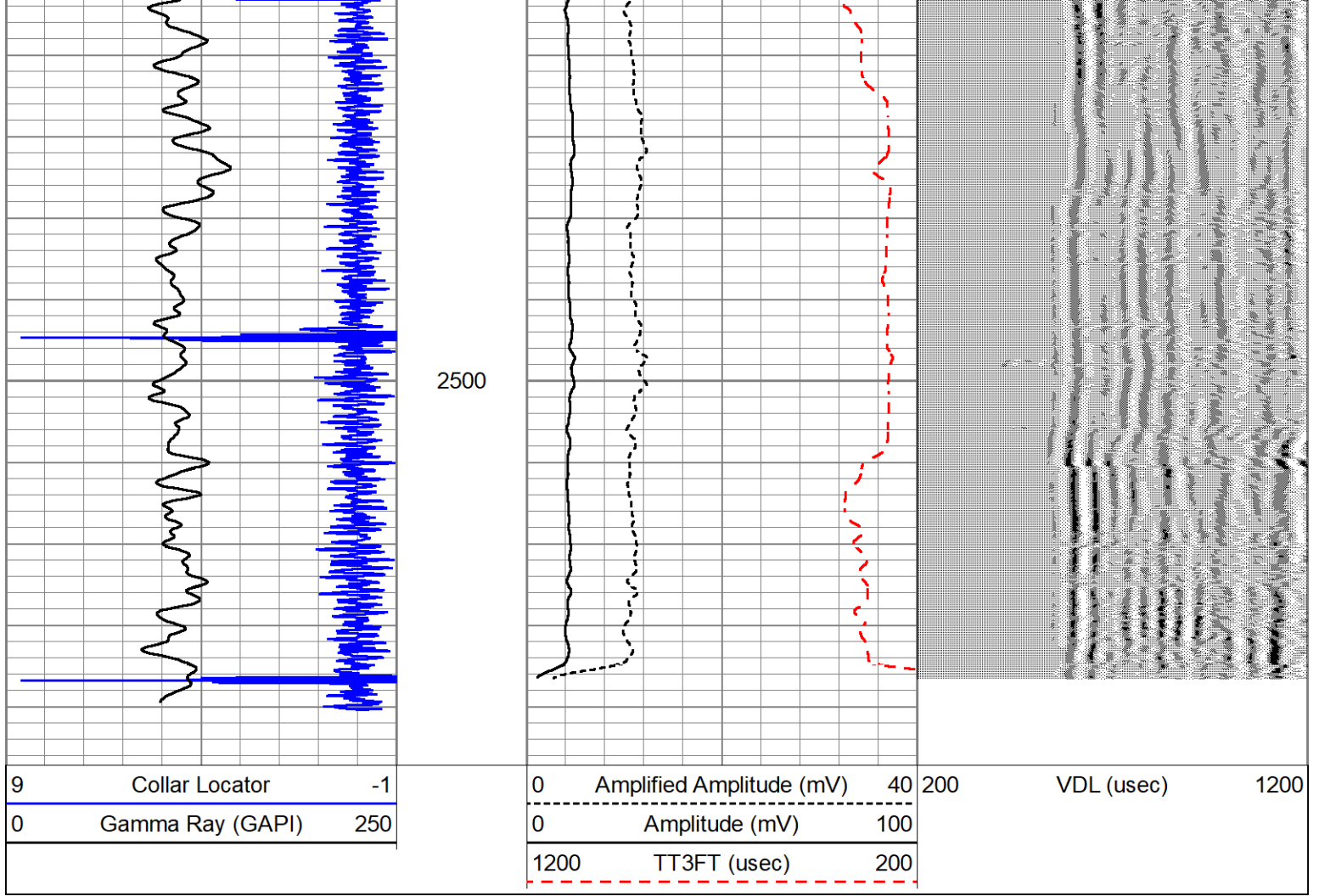


REPEAT PASS

Database File 10-6-22.db
 Dataset Pathname pass7
 Presentation Format cbl_dr
 Dataset Creation Thu Oct 06 16:16:04 2022
 Charted by Depth in Feet scaled 1:240

9	Collar Locator	-1	0	Amplified Amplitude (mV)	40	200	VDL (usec)	1200
0	Gamma Ray (GAPI)	250	0	Amplitude (mV)	100			
			1200	TT3FT (usec)	200			





Calibration Report

Database File 10-6-22.db
 Dataset Pathname pass9
 Dataset Creation Thu Oct 06 16:21:03 2022

Gamma Ray Calibration Report

Type / Serial: Probe275dig / pr051113

SHOP CALIBRATION

Mon Oct 22 13:45:45 2018

	Counts/Sec.	Gain	Offset	Jig	Units
Background	0.0				cps
Calibrator	1.0	1.0000			cps
					GAPI/cps

PRIMARY VERIFICATION

Background	0.0				cps
Calibrator	0.0				cps
Difference				0.0	GAPI

BEFORE SURVEY VERIFICATION

Background	0.0				cps
Calibrator	0.0				cps
Difference				0.0	GAPI

AFTER SURVEY VERIFICATION

Background	0.0				cps
Calibrator	0.0				cps

Segmented Cement Bond Log Calibration Report

Serial Number: 275
 Tool Model: Probe
 Calibration Casing Diameter: 4.500 in
 Calibration Depth: 653.627 ft

Master Calibration, performed Thu Oct 06 16:01:51 2022:


	Raw (v)		Calibrated (mv)		Results	
	Zero	Cal	Zero	Cal	Gain	Offset
3' CAL	-0.024	0.990	0.450	81.196	79.584	2.398
5' SUM	0.016	0.686	0.450	81.196	120.397	-1.421
S1						
S2						
S3						
S4						
S5						
S6						
S7						
S8						

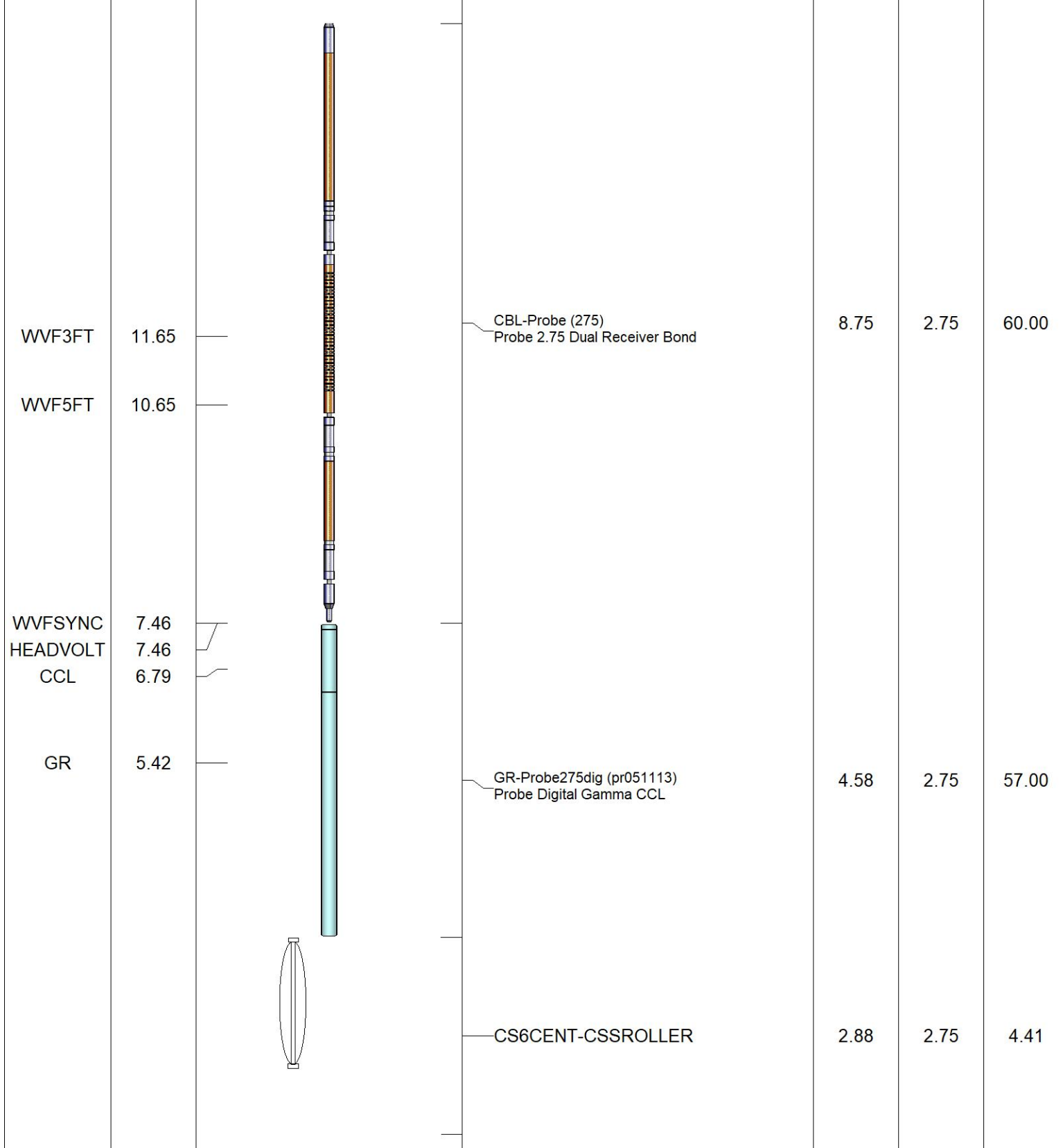
Internal Reference Calibration, performed (Not Performed):

	Raw (v)		Calibrated (v)		Results	
	Zero	Cal	Zero	Cal	Gain	Offset
CAL						

Air Zero Calibration, performed Tue Jun 14 09:28:44 2022:

	Raw (v)		Calibrated (v)		Results	
	Zero		Zero		Offset	
3'	0.000		0.000		0.000	
5'	0.000		0.000		0.000	
SUM						
S1						
S2						
S3						
S4						
S5						
S6						
S7						
S8						

Sensor	Offset (ft)	Schematic	Description	Length (ft)	O.D. (in)	Weight (lb)
			CS6CENT-CSSROLLER	2.88	2.75	4.41



Dataset: 10-6-22.db: field/well/run1/pass9
 Total length: 19.08 ft
 Total weight: 125.82 lb
 O.D.: 2.75 in

Log Variables

Database: C:\ProgramData\Warrior\Data\10-6-22.db
 Dataset: field/well/run1/pass9/_vars_

Top - Bottom

BOREID	BOTTEMP	CASEOD	CASETHCK	CASEWGHT	MAXAMPL	MINAMPL	MINATTN
in	degF	in	in	lb/ft	mV	mV	db/ft
7.875	100	4.5	0	11.6	81.2	1	0.8

PERFS	PPT usec	SRFTEMP degF	TDEPTH ft						
No	0	0	0						

Variable Description

BOREID : Borehole I.D.

BOTTEMP : Bottom Hole Temperature

CASEOD : Casing O.D.

CASETHCK : Casing Thickness

CASEWGHT : Casing Weight

MAXAMPL : Maximum Amplitude

MINAMPL : Minimum Amplitude

MINATTN : Minimum Attenuation

PERFS : Perforation Flag

PPT : Predicted Pipe Time

SRFTEMP : Surface Temperature

TDEPTH : Total Depth