



FIGURES

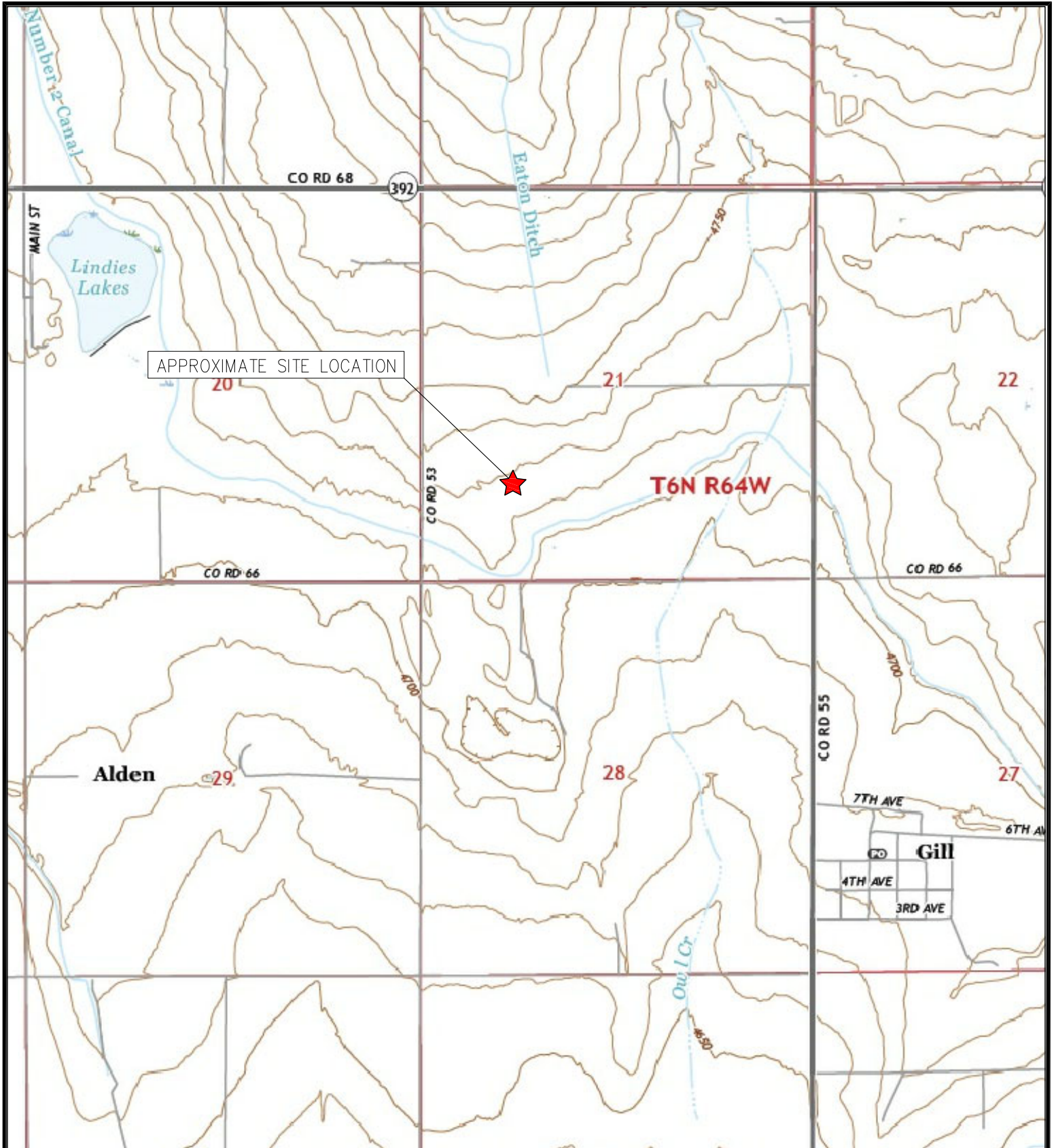
Figure 1: Topographic Site Location Map

Figure 2: Aerial Site Location Map

Figure 3: Initial Soil Analytical Map

Figure 4: Initial Polycyclic Aromatic Hydrocarbons Map

Figure 5: Initial Metals in Soil Map



TOPOGRAPHIC SITE LOCATION MAP
 HARPER/KONA A21 ECONODE
 SURFACE RELEASE
 40.468013 / -104.560206
 NW¼ SW¼ SEC.21 T6N R64W 6PM
 WELD COUNTY, COLORADO
 SPILL ID 483582



EAGLE
 ENVIRONMENTAL
 CONSULTING, INC.

8000 W 44th Ave, Wheat Ridge, CO 80033
 Ph: 303-433-0479 • F: 303-325-5449

SOURCE: USGS 7.5 MINUTE TOPOGRAPHIC MAP,
 KERSEY, CO QUADRANGLE 2022

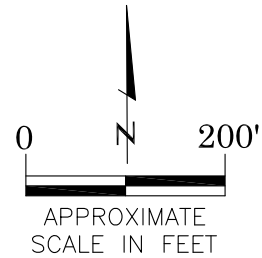
FIGURE 1



LEGEND

APPROXIMATE FACILITY BOUNDARIES

APPROXIMATE RELEASE LOCATION



AERIAL SITE LOCATION MAP
HARPER/KONA A21 ECONODE
SURFACE RELEASE
40.468013 / -104.560206
NW¼ SW¼ SEC.21 T6N R64W 6PM
WELD COUNTY, COLORADO
SPILL ID 483582

DATE:

01/11/23

FIG. NO.

2

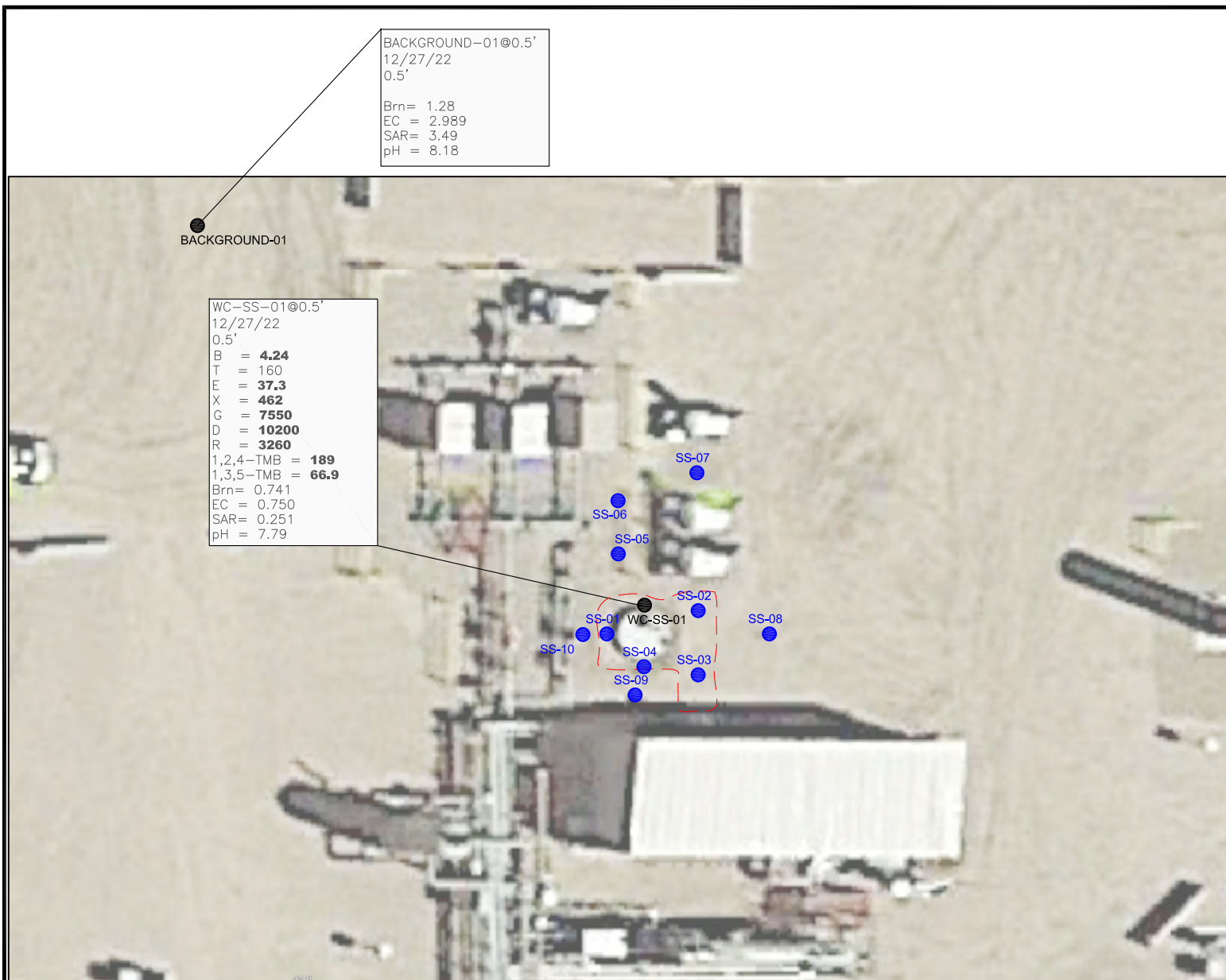
DRAWN BY:

AMN



EAGLE
ENVIRONMENTAL
CONSULTING, INC.

8000 W 44th Ave, Wheat Ridge, CO 80033
Ph: 303-433-0479 • F: 303-325-5449



LEGEND

- INITIAL ASSESSMENT/SCRAPE BOUNDARIES
- SS-02 APPROXIMATE LOCATION OF SOIL SAMPLES FIELD SCREENED, ONLY, WITH PHOTOIONIZATION DETECTOR
- SS-02 APPROXIMATE LOCATION OF SOIL SAMPLES SUBMITTED FOR LABORATORY ANALYSIS

PARAMETERS

SAMPLE LOCATION
DATE
DEPTH (FEET)
B = BENZENE (mg/kg)
T = TOLUENE (mg/kg)
E = ETHYLBENZENE (mg/kg)
X = TOTAL XYLENES (mg/kg)
G = TPH-GRO (mg/kg)
D = TPH-DRO (mg/kg)
R = TPH-RRO (mg/kg)
1,2,4-TMB = 1,2,4 TRIMETHYLBENZENE (mg/kg)
1,3,5-TMB = 1,3,5 TRIMETHYLBENZENE (mg/kg)
Brn= BORON (mg/L)
EC = SPECIFIC CONDUCTANCE (mmhos/cm)
SAR= SODIUM ADSORPTION RATIO
pH = pH (pH UNITS)

mg/kg = MILLIGRAMS PER KILOGRAM
mg/L = MILLIGRAMS PER LITER
mmhos/cm = MILLIMHOS PER CENTIMETER

TPH-GRO = TOTAL PETROLEUM HYDROCARBONS - GASOLINE RANGE ORGANICS
TPH-DRO = TOTAL PETROLEUM HYDROCARBONS - DIESEL RANGE ORGANICS
TPH-RRO = TOTAL PETROLEUM HYDROCARBONS - RESIDUAL RANGE ORGANICS

NOTES:
VALUES PRESENTED WITH A LESS THAN SYMBOL (<) DID NOT CONTAIN CONCENTRATIONS AT OR ABOVE LABORATORY DETECTION LIMITS.

VALUES PRESENTED IN **BOLD** EXCEED COGCC TABLE 915-1 REGULATORY LIMITS.

COGCC = COLORADO OIL AND GAS CONSERVATION COMMISSION

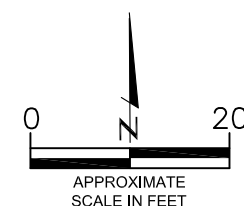
INITIAL SOIL ANALYTICAL MAP
HARPER/KONA A21 ECONODE
SURFACE RELEASE
40.468013 / -104.560206
NW¼ SW¼ SEC.21 T6N R64W 6PM
WELD COUNTY, COLORADO
SPILL ID 483582

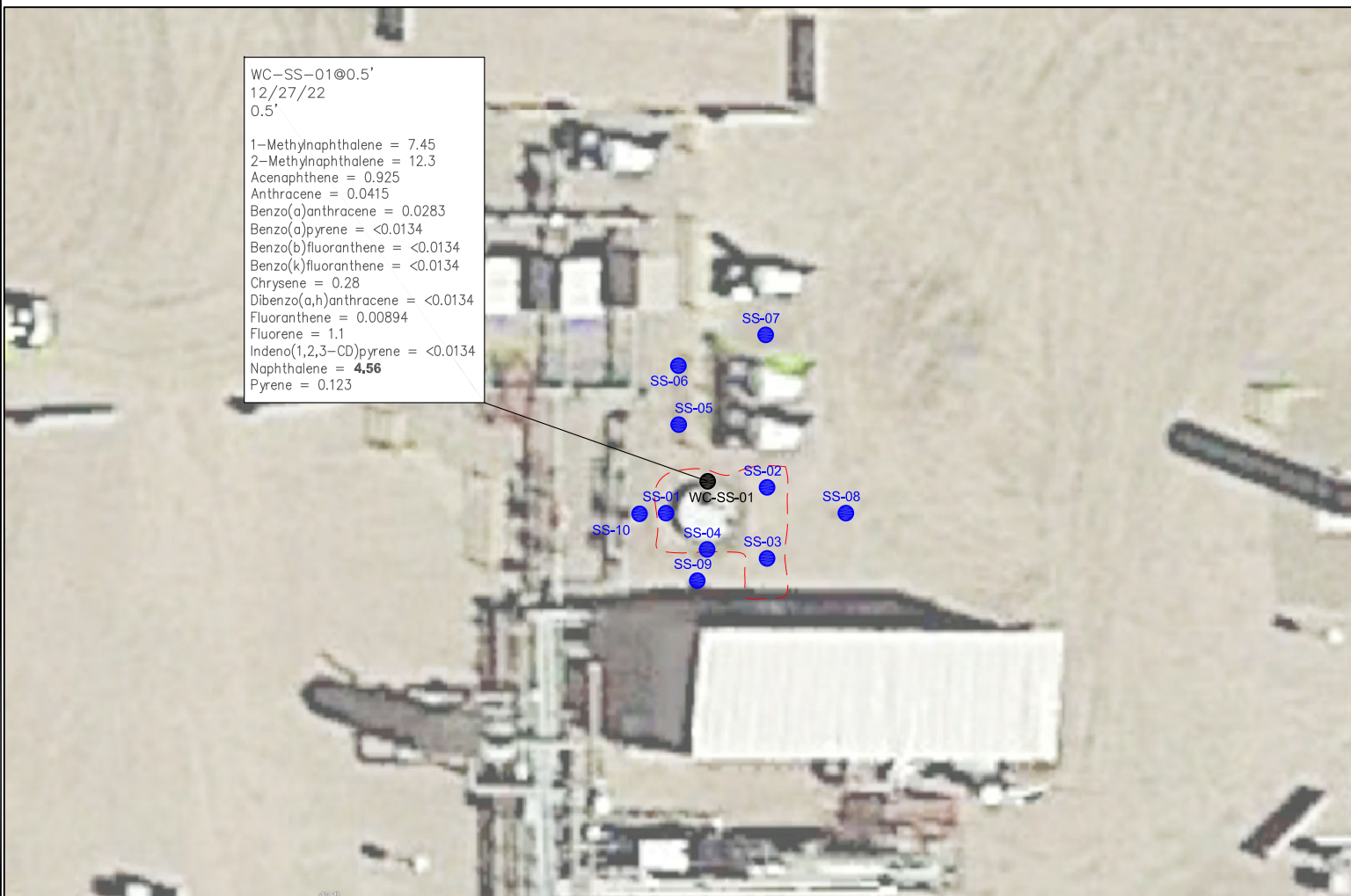
DRAWN BY:
AMN

FIG.
NO.
3



EAGLE
ENVIRONMENTAL
CONSULTING, INC.
8000 W 44th Ave, Wheat Ridge, CO 80033
Ph: 303-433-0479 • F: 303-325-5449





LEGEND

- INITIAL ASSESSMENT/SCRAPE BOUNDARIES
- SS-02 APPROXIMATE LOCATION OF SOIL SAMPLES FIELD SCREENED, ONLY, WITH PHOTOIONIZATION DETECTOR
- SS-02 APPROXIMATE LOCATION OF SOIL SAMPLES SUBMITTED FOR LABORATORY ANALYSIS

PARAMETERS

SAMPLE LOCATION
DATE SAMPLE COLLECTED
APPROXIMATE DEPTH
POLYCYCLIC AROMATIC HYDROCARBONS (PAHs) (mg/kg)

mg/kg = MILLIGRAMS PER KILOGRAM

NOTES:

VALUES PRESENTED WITH A LESS THAN SYMBOL (<) DID NOT CONTAIN CONCENTRATIONS AT OR ABOVE LABORATORY DETECTION LIMITS

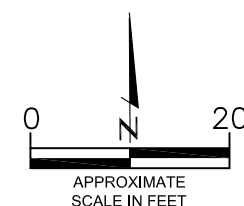
VALUES PRESENTED IN **BOLD** CONTAIN CONCENTRATIONS EXCEEDING COGCC TABLE 915-1 REGULATORY LIMITS.

COGCC = COLORADO OIL AND GAS CONSERVATION COMMISSION

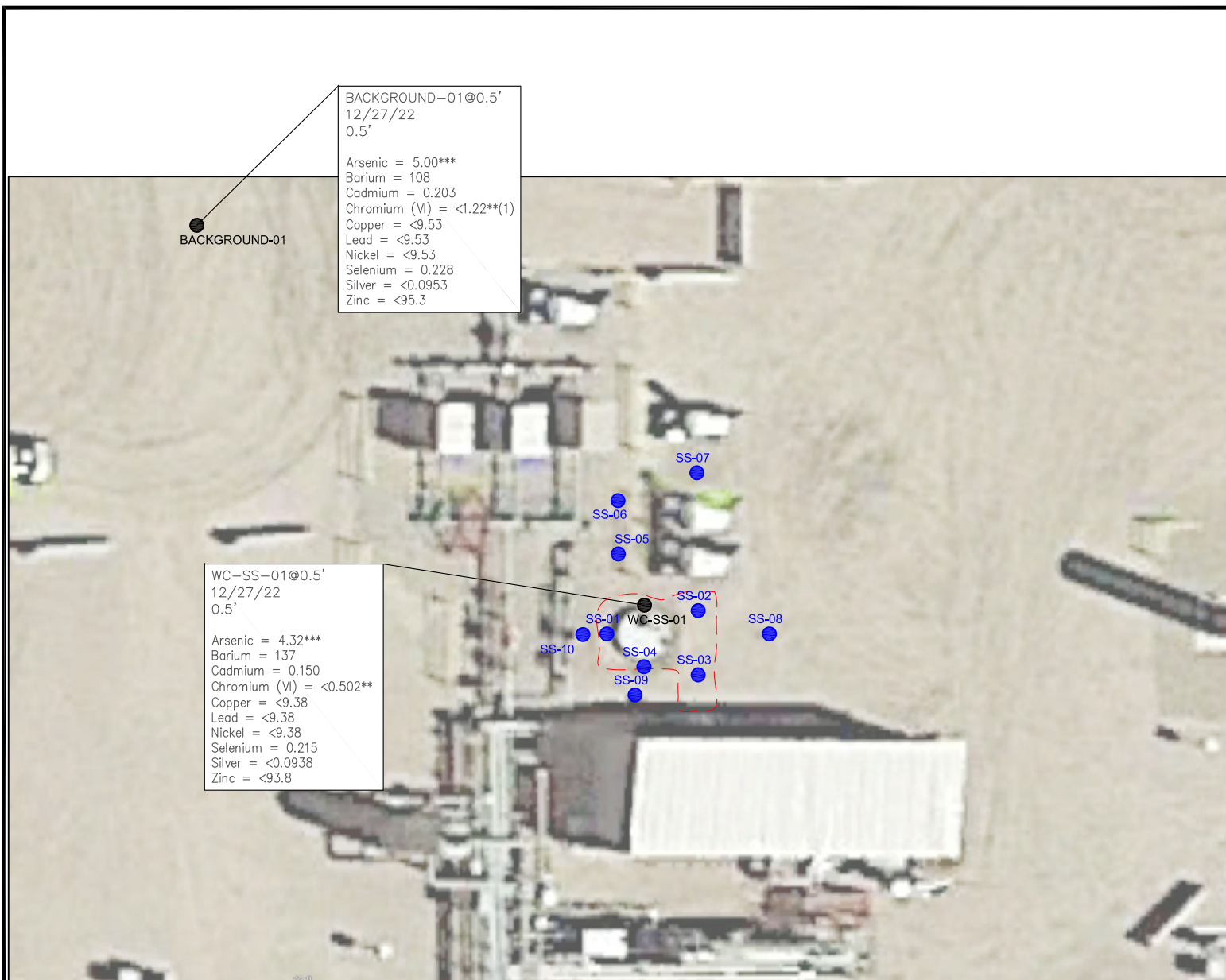
INITIAL POLYCYCLIC AROMATIC HYDROCARBONS MAP
HARPER/KONA A21 ECONODE
SURFACE RELEASE
40.468013 / -104.560206
NW¼ SW¼ SEC.21 T6N R64W 6PM
WELD COUNTY, COLORADO
SPILL ID 483582

DRAWN BY:
AMN

FIG.
NO.
4



EAGLE
ENVIRONMENTAL
CONSULTING, INC.
8000 W 44th Ave, Wheat Ridge, CO 80033
Ph: 303-433-0479 • F: 303-325-5449



LEGEND

- INITIAL ASSESSMENT/SCRAPE BOUNDARIES
- SS-02 APPROXIMATE LOCATION OF SOIL SAMPLES FIELD SCREENED, ONLY, WITH PHOTOIONIZATION DETECTOR
- SS-02 APPROXIMATE LOCATION OF SOIL SAMPLES SUBMITTED FOR LABORATORY ANALYSIS

PARAMETERS

SAMPLE LOCATION
DATE SAMPLE COLLECTED
APPROXIMATE DEPTH
Arsenic = (mg/kg)
Barium = (mg/kg)
Cadmium = (mg/kg)
Chromium (VI) = (mg/kg)
Copper = (mg/kg)
Lead = (mg/kg)
Nickel = (mg/kg)
Selenium = (mg/kg)
Silver = (mg/kg)
Zinc = (mg/kg)

mg/kg = MILLIGRAMS PER KILOGRAM

NOTES:
VALUES PRESENTED WITH A LESS THAN SYMBOL (<) DID NOT CONTAIN CONCENTRATIONS AT/OR ABOVE LABORATORY REPORTING LIMITS AND/OR MINIMUM DETECTION LIMITS.

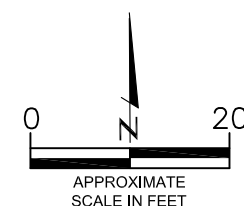
VALUES PRESENTED IN **BOLD** VALUES CONTAIN CONCENTRATIONS EXCEEDING COGCC TABLE 915-1 VALUES

****ACHIEVABLE PRACTICAL QUANTITATIVE LIMITS FOR HEXAVALENT CHROMIUM (Cr VI) IN SOILS IS IN THE RANGE OF 0.1 TO 1 mg/kg. (1) SAMPLE REQUIRED DILUTION RAISING DETECTION AND REPORTING LIMITS - SAMPLE NON-DETECT**

*****ARSENIC IS NATURALLY OCCURRING IN COLORADO. LOCAL "CLEAN-UP LEVEL" (6.25 mg/kg) IS 1.25*BACKGROUND (5.00 mg/kg).**

COGCC = COLORADO OIL AND GAS CONSERVATION COMMISSION

INITIAL METALS IN SOIL MAP
HARPER/KONA A21 ECONODE
SURFACE RELEASE
40.468013 / -104.560206
NW¼ SW¼ SEC.21 T6N R64W 6PM
WELD COUNTY, COLORADO
SPILL ID 483582



DRAWN BY:
AMN

FIG.
NO.
5



EAGLE
ENVIRONMENTAL
CONSULTING, INC.
8000 W 44th Ave, Wheat Ridge, CO 80033
Ph: 303-433-0479 • F: 303-325-5449



TABLES

Table 1: Photoionization Detector Reading Summary

Table 2: Soil Analytical Results Summary

Table 3: Polycyclic Aromatic Hydrocarbons

Table 4: Metals Analytical Results Summary

TABLE 1
 PHOTOIONIZATION DETECTOR READING SUMMARY
 HARPER/KONA A21 ECONODE
 SURFACE RELEASE
 40.468013 / -104.560206
 NW1/4 SW1/4 SEC.21 T6N R64W 6PM
 WELD COUNTY, COLORADO
 SPILL ID 483582

Sample Location (Latitude/Longitude)	Date	Approximate Depth (feet)	PID Reading (ppm-v)	Lab Submission (Y/N)
WC-SS-01 @ 0.5' (40.468023 / -104.560214)	12/27/22	0.5	1425	Y
SS-01 @ 0.5' (40.468012 / -104.560230)	12/27/22	0.5	918.5	N
SS-02 @ 0.25' (40.468019 / -104.560189)	12/27/22	0.25	1076	N
SS-03 @ 0.25' (40.468001 / -104.560192)	12/27/22	0.25	938.6	N
SS-04 @ 0.5' (40.468001 / -104.560215)	12/27/22	0.25	997.2	N
SS-05 @ 0.5' (40.468035 / -104.560223)	12/27/22	0.25	807.3	N
SS-06 @ 0.25' (40.468055 / -104.560222)	12/27/22	0.25	122.3	N
SS-07 @ 0.25' (40.468065 / -104.560190)	12/27/22	0.25	3.2	N
SS-08 @ 0.25' (40.468010 / -104.560163)	12/27/22	0.25	0.9	N
SS-09 @ 0.25' (40.467990 / -104.560215)	12/27/22	0.25	1.1	N
SS-10 @ 0.25' (40.468010 / -104.560241)	12/27/22	0.25	2.1	N
Background-01 @ 0.5' (40.468146 / -104.560377)	12/27/22	0.5	2.6	Y
(Y/N) = Yes or No ppm-v = parts per million by volume PID = Photoionization Detector				

TABLE 2
SOIL ANALYTICAL RESULTS SUMMARY
HARPER/KONA A21 ECONODE
SURFACE RELEASE
40.468013 / -104.560206
NW1/4 SW1/4 SEC.21 T6N R64W 6PM
WELD COUNTY, COLORADO
SPILL ID 483582

Sample Location (Latitude/Longitude)	Date	Approximate Depth (feet)	PID Reading (ppm-v)	Benzene (mg/kg)	Toluene (mg/kg)	Ethylbenzene (mg/kg)	Total Xylenes (mg/kg)	TPH-GRO (mg/kg)	TPH-DRO (mg/kg)	TPH-RRO (mg/kg)	1,2,4-TMB (mg/kg)	1,3,5-TMB (mg/kg)	Boron (mg/L)	Specific Conductance (mmhos/cm)	pH (pH units)	SAR
COGCC Table 915-1 Residential Screening Levels (mg/kg)				1.20	490	5.8	58	500			30	27	2	<4	6-8.3	<6
WC-SS-01 @ 0.5' (40.468023 / -104.560214)	12/27/22	0.5	1425	4.24	160	37.3	462	7550	10200	3260	189	66.9	0.741	0.750	7.79	0.251
Background-01 @ 0.5' (40.468146 / -104.560377)	12/27/22	0.5	2.6	NA	NA	NA	NA	NA	NA	NA	NA	NA	1.280	2.98	8.18	3.49
COGCC = Colorado Oil and Gas Conservation Commission								NA - Not Analyed								
mg/kg = milligrams per kilogram								1,2,4-TMB = 1,2,4-Trimethylbenzene								
mmhos/cm = millimhos per centimeter								1,3,5-TMB = 1,3,5-Trimethylbenzene								
PID = Photoionization Detector																
ppm-v = parts per million by volume																
mg/L = milligrams per liter																
SAR = Sodium Adsoption Ratio																
Notes: Values presented with a less than symbol (<) did not contain concentrations at or above the laboratory reporting limit.																
Values presented in BOLD contained concentrations exceeding COGCC Table 915-1 Regulatory Limits.																

TABLE 3
PAH ANALYTICAL RESULTS SUMMARY
HARPER/KONA A21 ECODE
SURFACE RELEASE
40.468013 / -104.560206
NW1/4 SW1/4 SEC.21 T6N R64W 6PM
WELD COUNTY, COLORADO
SPILL ID 483582

Sample Location (Latitude/Longitude)	Date	Approximate Depth (feet)	PID Reading (ppm- v)	1-Methyl- naphthalene (mg/kg)	2-Methyl-naphthalene (mg/kg)	Acenaphthene (mg/kg)	Anthracene (mg/kg)	Benzo(a)-anthracene (mg/kg)	Benzo(a)- pyrene (mg/kg)	Benzo(b)- fluoranthene (mg/kg)	Benzo(k)- fluoranthene (mg/kg)	Chrysene (mg/kg)	Dibenzo(a,h)- anthracene (mg/kg)	Fluoranthene (mg/kg)	Fluorene (mg/kg)	Indeno(1,2,3- cd)-pyrene (mg/kg)	Naphthalene (mg/kg)	Pyrene (mg/kg)
COGCC Table 915-1 Residential Screening Levels				18	24	360	1,800	1.1	0.11	1.1	11	110	0.11	240	240	1.1	2	180
WC-SS-01 @ 0.5' (40.468023 / -104.560214)	12/27/22	0.5	1425	7.45	12.3	0.925	0.0415	0.0283	<0.0134	<0.0134	<0.0134	0.28	<0.0134	0.00894	1.1	<0.0134	4.56	0.123

COGCC = Colorado Oil and Gas Conservation Commission
mg/kg = milligrams per kilogram
PID = Photoionization Detector
ppm-v = parts per million by volume
Notes: Values presented with a less than symbol (<) did not contain concentrations at or above the laboratory reporting limit.
Values presented in **BOLD** contained concentrations exceeding COGCC Table 915-1 Regulatory Limits

TABLE 4
METALS ANALYTICAL RESULTS SUMMARY
HARPER/KONA A21 ECONODE
SURFACE RELEASE
40.468013 / -104.560206
NW1/4 SW1/4 SEC.21 T6N R64W 6PM
WELD COUNTY, COLORADO
SPILL ID 483582

Sample Location (Latitude/Longitude)	Date	Approximate Depth (feet)	Arsenic (mg/kg)	Barium (mg/kg)	Cadmium (mg/kg)	Hexavalent Chromium (mg/kg)	Copper (mg/kg)	Lead (mg/kg)	Nickel (mg/kg)	Selenium (mg/kg)	Silver (mg/kg)	Zinc (mg/kg)
COGCC Table 915-1 Residential Screening Levels			0.68***	15,000	71	0.3**	3,100	400	1,500	390	390	23,000
Local Clean-up Levels			6.25***	--	--	0.1 to 1**	--	--	--	--	--	--
WC-SS-01 @ 0.5' (40.468023 / -104.560214)	12/27/22	0.5	4.32***	137	0.150	<0.502**	<9.38	<9.38	<9.38	0.215	<0.0938	<93.8
Background-01 @ 0.5' (40.468146 / -104.560377)	12/27/22	0.5	5.00***	108	0.203	<1.22**(1)	<9.53	<9.53	<9.53	0.228	<0.0953	<95.3
COGCC = Colorado Oil and Gas Conservation Commission mg/kg = milligrams per kilogram Notes: Values presented with a less than symbol (<) did not contain concentrations at or above the laboratory reporting limit or minimum detection levels. Values presented in BOLD contained concentrations exceeding applicable COGCC Table 915-1 Regulatory Limits **Achievable practical quantitative limits for Hexavalent Chromium in soils is in the range of 0.1 to 1 mg/kg. (1) Sample required dilution raising detection and reporting limits - sample non-detect ***Arsenic is naturally occurring in Colorado. Local clean-up level (6.25 mg/kg) is 1.25*background (5.00 mg/kg)												



ATTACHMENT A

Photo Log

Harper/Kona A21 Econode
NW¹/₄ SW¹/₄ Sec. 21 T6N R64W 6PM
Weld County, CO
Spill ID 483582

Surface Release Assessment

December 2022



EAGLE
ENVIRONMENTAL
CONSULTING, INC.
8000 W 44th Ave, Wheat Ridge, CO 80033
Ph: 303-433-0479 • F: 303-325-5449



Initial Release – 12/23/22



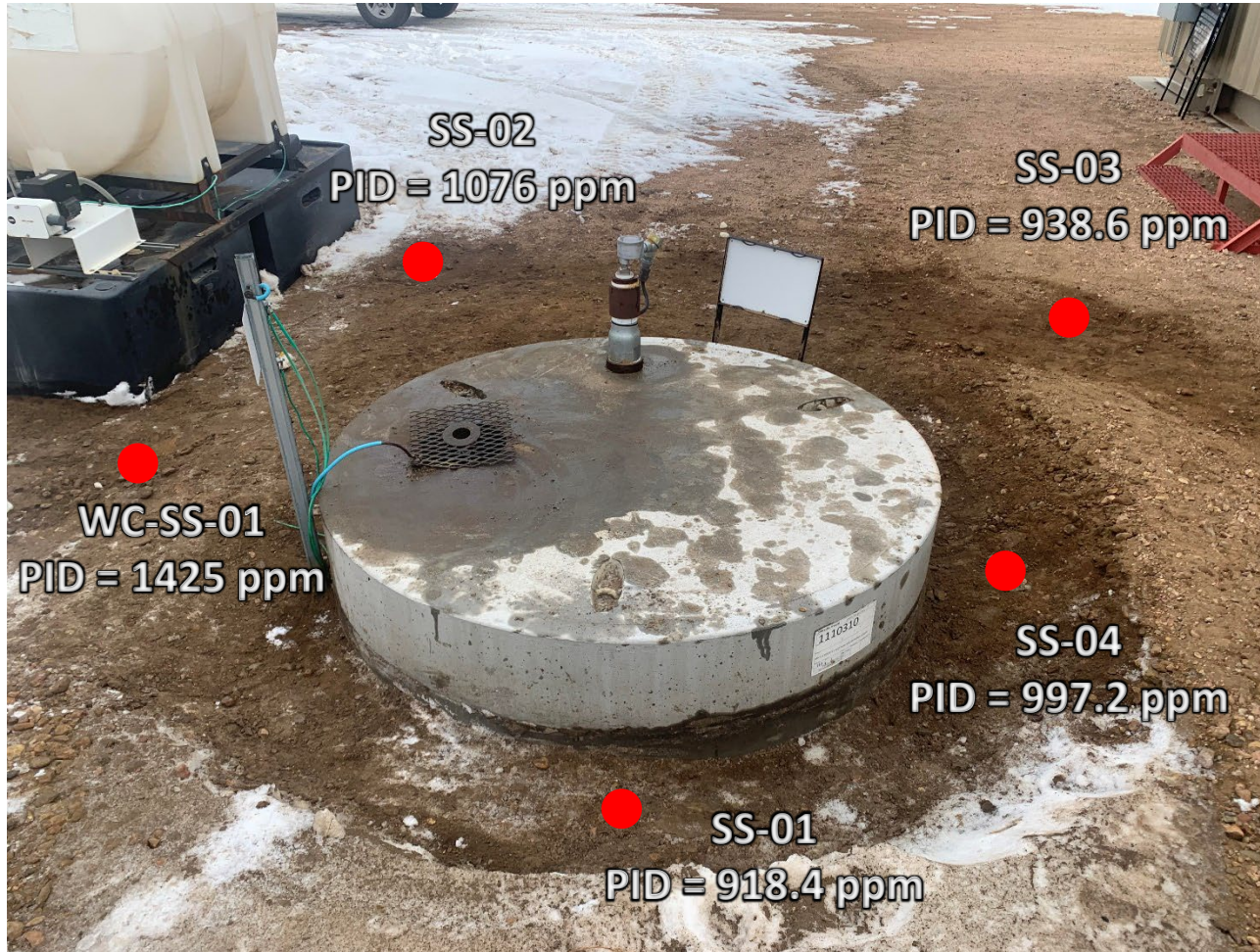
Looking northwest

Surface release/overflow from 12 bbl vault

Immediate clean-up response coordinated

Free standing petroleum and odor observed

Initial Release Assessment – 12/27/22



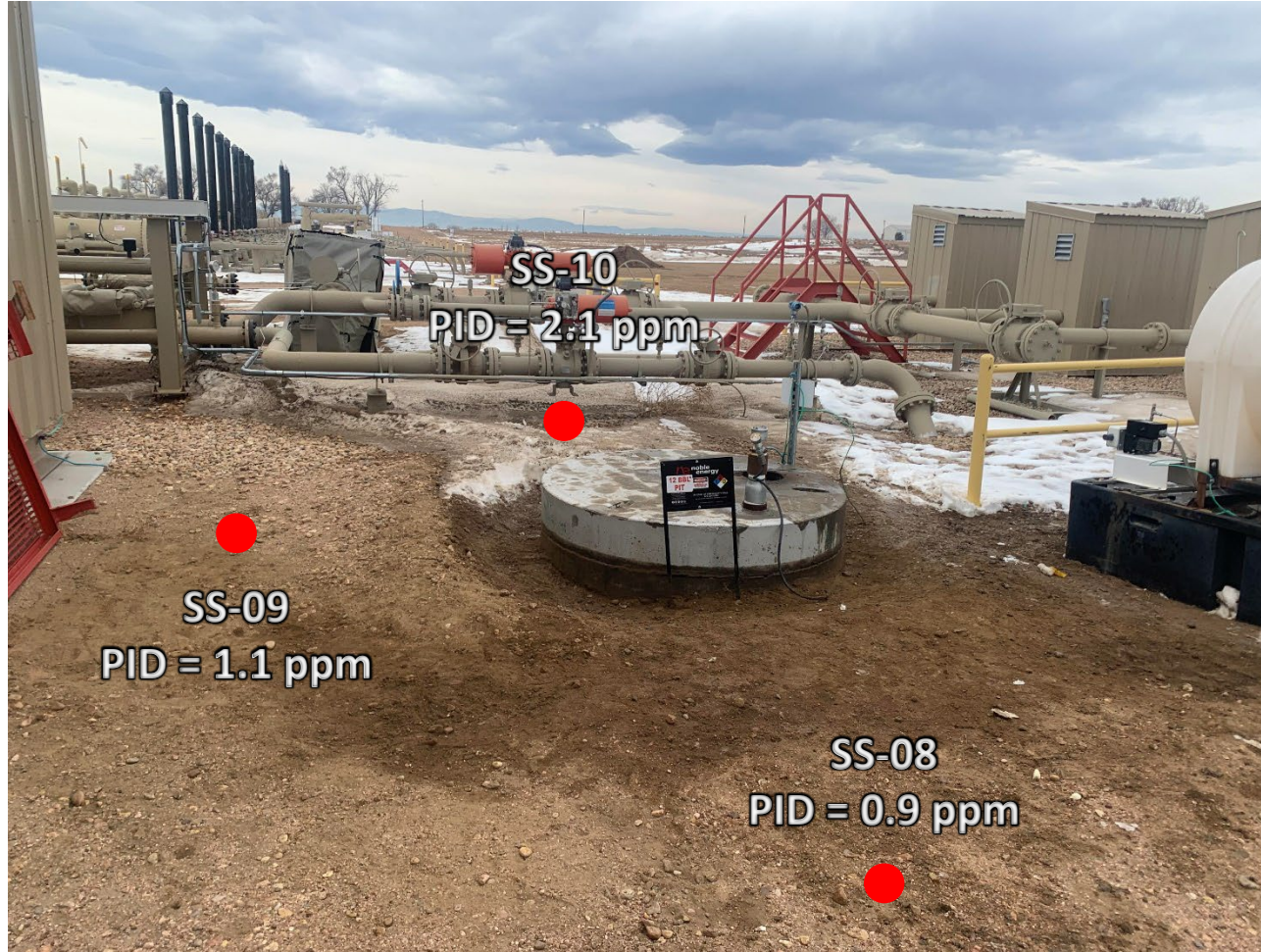
Looking east

Minimal excavation completed around surface spill area

Total depth ~0.25-0.5'

Residual petroleum hydrocarbon staining and odor observed

Initial Release Assessment – 12/27/22



Looking west

Minimal excavation completed around surface spill area

Total depth ~0.25-0.5'

Residual petroleum hydrocarbon staining and odor observed

Initial Release Assessment – 12/27/22



Looking south

Residual petroleum hydrocarbon staining and odor observed

Initial Release Assessment – 12/27/22



Looking southwest

Residual petroleum hydrocarbon staining and odor observed



ATTACHMENT B

Laboratory Analytical Reports



January 06, 2023

Eagle Environmental Consulting, Inc.

Martin C Eckert III

8000 W 44th Ave

Wheat Ridge CO 80033

Project Name - Noble - Harper/Kona A21 Econode Project Number - [none]

Attached are your analytical results for Noble - Harper/Kona A21 Econode received by Origins Laboratory, Inc. December 27, 2022. This project is associated with Origins project number Y212571-01.

The analytical results in the following report were analyzed under the guidelines of EPA Methods. These methods are identified as follows; "SW" are defined in SW-846, "EPA" are defined in 40CFR part 136 and "SM" are defined in the most current revision of Standard Methods For the Examination of Water and Wastewater.

The analytical results apply specifically to the samples and analyses specified per the attached Chain of Custody. As such, this report shall not be reproduced except in full, without the written approval of Origin's laboratory.

Unless otherwise noted, the analytical results for all soil samples are reported on a wet weight basis. All analytical analyses were performed under NELAP guidelines unless noted by a data qualifier.

Any holding time exceedances, deviations from the method specifications or deviations from Origins Laboratory's Standard Operating Procedures are outlined in the case narrative.

Thank you for selecting Origins for your analytical needs. Please contact us with any questions concerning this report, or if we can help with anything at all.

Origins Laboratory, Inc.
303.433.1322
o-squad@oelabinc.com



1725 Elk Place, Denver, CO 80211 | Phone: 303.433.1322 | Fax: 303.265.9645

Eagle Environmental Consulting, Inc.

8000 W 44th Ave

Wheat Ridge CO 80033

Martin C Eckert III

Project Number: [none]

Project: Noble - Harper/Kona A21 Econode

CROSS REFERENCE REPORT

Sample ID	Laboratory ID	Matrix	Date Sampled	Date Received
WC-SS-01@0.5'	Y212571-01	Soil	December 27, 2022 11:30	12/27/2022 17:30

Origins Laboratory, Inc.



The results in this report apply to the samples analyzed in accordance with the chain of custody document. This analytical report must be reproduced in its entirety.

Eagle Environmental Consulting, Inc.
8000 W 44th Ave
Wheat Ridge CO 80033

Martin C Eckert III
Project Number: [none]
Project: Noble - Harper/Kona A21 Econode

Origins Laboratory F-012207-01-R1
Effective Date: 01/09/12

Sample Receipt Checklist

Origins Work Order: Y212511 Client: Eagle
Client Project ID: Harper Kona A21

Checklist Completed by: DE Shipped Via: HD
Date/time completed: 12/27/2012 (UPS, FedEx, Hand Delivered, Pick-up, etc.)
Airbill #: N/A

Matrix(s) Received: (Check all that apply): X Soil/Solid Water Other: _____
Cooler Number/Temperature: () 20 °C / _____ °C / _____ °C (Describe) _____ °C
Thermometer ID: TW04

Requirement Description	Yes	No	N/A	Comments (if any)
If samples require cooling, was the temperature between 0°C to ≤ 6°C ⁽¹⁾ ?	<u>X</u>			
Is there ice present (document if blue ice is used)	<u>X</u>			
Are custody seals present on cooler? (if so, document in comments if they are signed and dated, broken or intact)		<u>X</u>		
Are custody seals present on each sample container? (if so, document in comments if they are signed and dated, broken or intact)		<u>X</u>		
Were all samples received intact ⁽¹⁾ ?	<u>X</u>			
Was adequate sample volume provided ⁽¹⁾ ?	<u>X</u>			
Are short holding time analytes or samples with HTs due within 48 hours present ⁽¹⁾ ?		<u>X</u>		
Is a chain-of-custody (COC) present and filled out completely ⁽¹⁾ ?	<u>X</u>			
Does the COC agree with the number and type of sample bottles received ⁽¹⁾ ?	<u>X</u>			
Do the sample IDs on the bottle labels match the COC ⁽¹⁾ ?	<u>X</u>			
Is the COC properly relinquished by the client with date and time recorded ⁽¹⁾ ?	<u>X</u>			
For volatiles in water – is there headspace (> ¼ inch bubble) present? If yes, contact client and note in narrative.			<u>X</u>	
Are samples preserved that require preservation and was it checked ⁽¹⁾ ? (note ID of confirmation instrument used in comments) / (preservation is not confirmed for subcontracted analyses in order to insure sample integrity)/(pH <2 for samples preserved with HNO ₃ , HCL, H ₂ SO ₄) / (pH >10 for samples preserved with NaAsO ₂ +NaOH, ZnAc+NaOH)			<u>X</u>	
Additional Comments (if any):				

⁽¹⁾if NO, then contact the client before proceeding with analysis and note date/time and person contacted as well as the corrective action to in the additional comments (above) and the case narrative.

Reviewed by (Project Manager)

12/27/2012
Date/Time Reviewed

Origins Laboratory, Inc.

J. Bynon

The results in this report apply to the samples analyzed in accordance with the chain of custody document. This analytical report must be reproduced in its entirety.

Eagle Environmental Consulting, Inc.
8000 W 44th Ave
Wheat Ridge CO 80033

Martin C Eckert III
Project Number: [none]
Project: Noble - Harper/Kona A21 Econode

WC-SS-01@0.5'

12/27/2022 11:30:00AM

Analyte	Result	Min Detection Limit	Reporting Limit	Units	Dilution	Batch	Prepared	Analyzed	Notes
---------	--------	---------------------	-----------------	-------	----------	-------	----------	----------	-------

Origins Laboratory, Inc.
Y212571-01 (Soil)

Boron (DTPA Sorbitol)

Boron	0.741	0.0990	mg/L	1	B2L2803	12/28/2022	01/03/2023
-------	-------	--------	------	---	---------	------------	------------

DRO/ORO by EPA 8015D

Diesel (C10-C28)	10200	250	mg/kg	10	B2L2727	12/27/2022	12/28/2022
Residual Range Organics (C28-C40)	3260	1000	"	"	"	"	"

Surrogate: o-Terphenyl	313 %	50-150	"	"	"	S-06
------------------------	-------	--------	---	---	---	------

GBTEX+TMBs by 8260D

1,2,4-Trimethylbenzene	189	1.00	mg/kg	500	B2L2728	12/27/2022	12/28/2022
1,3,5-Trimethylbenzene	66.9	1.00	"	"	"	"	"
Benzene	4.24	0.0500	"	25	"	"	12/27/2022
Ethylbenzene	37.3	1.00	"	500	"	"	12/28/2022
Toluene	160	1.00	"	"	"	"	"
Xylenes, total	462	2.00	"	1000	"	"	12/28/2022
Gasoline Range Hydrocarbons	7550	100	"	500	"	"	12/28/2022

Surrogate: 1,2-Dichloroethane-d4	99.1 %	70-130	"	"	"
Surrogate: Toluene-d8	115 %	70-130	"	"	"
Surrogate: 4-Bromofluorobenzene	95.6 %	70-130	"	"	"

Origins Laboratory, Inc.



The results in this report apply to the samples analyzed in accordance with the chain of custody document. This analytical report must be reproduced in its entirety.

Eagle Environmental Consulting, Inc.
8000 W 44th Ave
Wheat Ridge CO 80033

Martin C Eckert III
Project Number: [none]
Project: Noble - Harper/Kona A21 Econode

WC-SS-01@0.5'

12/27/2022 11:30:00AM

Analyte	Result	Min Detection Limit	Reporting Limit	Units	Dilution	Batch	Prepared	Analyzed	Notes
---------	--------	---------------------	-----------------	-------	----------	-------	----------	----------	-------

Origins Laboratory, Inc.
Y212571-01 (Soil)

Metals by Saturated Paste by EPA 6010

Calcium	5.83	0.499	meq/L	10	[CALC]	12/28/2022	12/29/2022
Magnesium	1.41	0.823	"	"	"	"	"
Sodium	0.477	0.435	"	"	"	"	"

PAH by 8270D SIM

1-Methylnaphthalene	7.45	0.0218	0.0402	mg/Kg	20	L656721	01/04/2023	01/04/2023
2-Methylnaphthalene	12.3	0.0387	0.0402	"	"	"	"	"
Acenaphthene	0.925	0.00608	0.0134	"	"	"	"	"
Anthracene	0.0415	0.00668	0.0134	"	"	"	"	"
Benzo(a)anthracene	0.0283	0.00986	0.0134	"	"	"	"	"
Benzo(a)pyrene	ND	0.00936	0.0134	"	"	"	"	"
Benzo(b)fluoranthene	ND	0.0117	0.0134	"	"	"	"	"
Benzo(k)fluoranthene	ND	0.00874	0.0134	"	"	"	"	"
Chrysene	0.28	0.0125	0.0134	"	"	"	"	"
Dibenz(a,h)anthracene	ND	0.0123	0.0134	"	"	"	"	"
Fluoranthene	0.00894	0.00788	0.0134	"	"	"	"	"
Fluorene	1.1	0.00572	0.0134	"	"	"	"	"
Indeno(1,2,3-cd)pyrene	ND	0.0125	0.0134	"	"	"	"	"
Naphthalene	4.56	0.029	0.0402	"	"	"	"	"
Pyrene	0.123	0.0129	0.0134	"	"	"	"	"
Surrogate: 2-Fluorobiphenyl	55 %		33-115			"	"	"
Surrogate: 4-Terphenyl-d14	60.7 %		33-122			"	"	"

Origins Laboratory, Inc.



The results in this report apply to the samples analyzed in accordance with the chain of custody document. This analytical report must be reproduced in its entirety.

Eagle Environmental Consulting, Inc.
8000 W 44th Ave
Wheat Ridge CO 80033

Martin C Eckert III
Project Number: [none]
Project: Noble - Harper/Kona A21 Econode

WC-SS-01@0.5'

12/27/2022 11:30:00AM

Analyte	Result	Min Detection Limit	Reporting Limit	Units	Dilution	Batch	Prepared	Analyzed	Notes
---------	--------	---------------------	-----------------	-------	----------	-------	----------	----------	-------

Waypoint Analytical, LLC.
Y212571-01 (Soil)

PAH by 8270D SIM

Surrogate: Nitrobenzene-d5	103 %	29-110	L6567 21	01/04/2023	01/04/2023
----------------------------	-------	--------	-------------	------------	------------

pH in Soil by 9045D

pH	7.79	pH Units	1	B2L2807	12/28/2022	12/29/2022
----	------	----------	---	---------	------------	------------

SAR by 20B Saturated Paste

SAR	0.251	SAR	1	B2L2805	12/28/2022	12/29/2022
-----	-------	-----	---	---------	------------	------------

Specific Conductance Mod. 9050A

Specific Conductance (EC)	0.750	0.00500	mmhos/cm	1	B2L2807	12/28/2022	12/29/2022
---------------------------	-------	---------	----------	---	---------	------------	------------

Table 915 metals by EPA 6020B

Arsenic	4.32	0.0938	mg/kg	10	B2L2817	12/29/2022	12/29/2022
Barium	137	9.38	"	"	"	"	"
Cadmium	0.150	0.0938	"	"	"	"	"
Copper	ND	9.38	"	"	"	"	"
Lead	ND	9.38	"	"	"	"	"
Nickel	ND	9.38	"	"	"	"	"
Selenium	0.215	0.0938	"	"	"	"	"
Silver	ND	0.0938	"	"	"	"	"

Origins Laboratory, Inc.



The results in this report apply to the samples analyzed in accordance with the chain of custody document. This analytical report must be reproduced in its entirety.

Eagle Environmental Consulting, Inc.
8000 W 44th Ave
Wheat Ridge CO 80033

Martin C Eckert III
Project Number: [none]
Project: Noble - Harper/Kona A21 Econode

WC-SS-01@0.5'

12/27/2022 11:30:00AM

Analyte	Result	Min Detection Limit	Reporting Limit	Units	Dilution	Batch	Prepared	Analyzed	Notes
---------	--------	------------------------	--------------------	-------	----------	-------	----------	----------	-------

Origins Laboratory, Inc.
Y212571-01 (Soil)

Table 915 metals by EPA 6020B

Zinc	ND		93.8	mg/kg	10	B2L2817	12/29/2022	12/29/2022
------	----	--	------	-------	----	---------	------------	------------

Total Metals by 7196A

Chromium, Hexavalent	ND	0.502	1.03	mg/Kg	2	L656746	12/27/2022	01/04/2023
----------------------	----	-------	------	-------	---	---------	------------	------------

Origins Laboratory, Inc.



The results in this report apply to the samples analyzed in accordance with the chain of custody document. This analytical report must be reproduced in its entirety.

Eagle Environmental Consulting, Inc.
8000 W 44th Ave
Wheat Ridge CO 80033

Martin C Eckert III
Project Number: [none]
Project: Noble - Harper/Kona A21 Econode

Extractable Petroleum Hydrocarbons by 8015D - Quality Control
Origins Laboratory, Inc.

Analyte	Result	Reporting Limit	Units	Spike Level	Source Result	%REC	%REC Limits	RPD	RPD Limit	Notes
Batch B2L2727 - EPA 3580										
Blank (B2L2727-BLK1)					Prepared: 12/27/2022 Analyzed: 12/27/2022					
Diesel (C10-C28)	ND	25.0	mg/kg							U
Residual Range Organics (C28-C40)	ND	100	"							U
Surrogate: o-Terphenyl	19		"	24.9		75.8	50-150			

Origins Laboratory, Inc.



The results in this report apply to the samples analyzed in accordance with the chain of custody document. This analytical report must be reproduced in its entirety.

Eagle Environmental Consulting, Inc.
8000 W 44th Ave
Wheat Ridge CO 80033

Martin C Eckert III
Project Number: [none]
Project: Noble - Harper/Kona A21 Econode

Extractable Petroleum Hydrocarbons by 8015D - Quality Control
Origins Laboratory, Inc.

Analyte	Result	Reporting Limit	Units	Spike Level	Source Result	%REC	%REC Limits	RPD	RPD Limit	Notes
---------	--------	-----------------	-------	-------------	---------------	------	-------------	-----	-----------	-------

Batch B2L2727 - EPA 3580

LCS (B2L2727-BS1)

Prepared: 12/27/2022 Analyzed: 12/27/2022

Diesel (C10-C28)	894	50.0	mg/kg	1000		89.4	70-130			
Residual Range Organics (C28-C40)	922	200	"	1000		92.2	70-130			
Surrogate: o-Terphenyl	38		"	49.8		76.1	50-150			

Origins Laboratory, Inc.



The results in this report apply to the samples analyzed in accordance with the chain of custody document. This analytical report must be reproduced in its entirety.

Eagle Environmental Consulting, Inc.
8000 W 44th Ave
Wheat Ridge CO 80033

Martin C Eckert III
Project Number: [none]
Project: Noble - Harper/Kona A21 Econode

Extractable Petroleum Hydrocarbons by 8015D - Quality Control
Origins Laboratory, Inc.

Analyte	Result	Reporting Limit	Units	Spike Level	Source Result	%REC	%REC Limits	RPD	RPD Limit	Notes
---------	--------	-----------------	-------	-------------	---------------	------	-------------	-----	-----------	-------

Batch B2L2727 - EPA 3580

Matrix Spike (B2L2727-MS1)		Source: Y212569-08			Prepared: 12/27/2022 Analyzed: 12/27/2022					
Diesel (C10-C28)	1080	50.0	mg/kg	1000	51.8	102	70-130			
Residual Range Organics (C28-C40)	1030	200	"	1000	ND	103	70-130			
Surrogate: o-Terphenyl	27		"	49.8		54.7	50-150			

Origins Laboratory, Inc.



The results in this report apply to the samples analyzed in accordance with the chain of custody document. This analytical report must be reproduced in its entirety.

Eagle Environmental Consulting, Inc.
8000 W 44th Ave
Wheat Ridge CO 80033

Martin C Eckert III
Project Number: [none]
Project: Noble - Harper/Kona A21 Econode

Extractable Petroleum Hydrocarbons by 8015D - Quality Control
Origins Laboratory, Inc.

Analyte	Result	Reporting Limit	Units	Spike Level	Source Result	%REC	%REC Limits	RPD	RPD Limit	Notes
---------	--------	-----------------	-------	-------------	---------------	------	-------------	-----	-----------	-------

Batch B2L2727 - EPA 3580

Matrix Spike Dup (B2L2727-MSD1)		Source: Y212569-08			Prepared: 12/27/2022 Analyzed: 12/27/2022					
Diesel (C10-C28)	1060	50.0	mg/kg	1000	51.8	101	70-130	1.16	35	
Residual Range Organics (C28-C40)	1040	200	"	1000	ND	104	70-130	1.60	35	
Surrogate: o-Terphenyl	35		"	49.8		69.5	50-150			

Origins Laboratory, Inc.



The results in this report apply to the samples analyzed in accordance with the chain of custody document. This analytical report must be reproduced in its entirety.

Eagle Environmental Consulting, Inc.
8000 W 44th Ave
Wheat Ridge CO 80033

Martin C Eckert III
Project Number: [none]
Project: Noble - Harper/Kona A21 Econode

Extractable Petroleum Hydrocarbons by 8015D - Quality Control

Origins Laboratory, Inc.

Analyte	Result	Reporting Limit	Units	Spike Level	Source Result	%REC	%REC Limits	RPD	RPD Limit	Notes
Batch B2L2728 - EPA 5030 (soil)										
Blank (B2L2728-BLK1)					Prepared: 12/27/2022 Analyzed: 12/27/2022					
1,2,4-Trimethylbenzene	ND	0.00200	mg/kg							U
1,3,5-Trimethylbenzene	ND	0.00200	"							U
Benzene	ND	0.00200	"							U
Ethylbenzene	ND	0.00200	"							U
Naphthalene	ND	0.00380	"							U
Toluene	ND	0.00200	"							U
Xylenes, total	ND	0.00200	"							U
Gasoline Range Hydrocarbons	ND	0.200	"							U
Surrogate: 1,2-Dichloroethane-d4	0.15		"	0.125	121		70-130			
Surrogate: Toluene-d8	0.13		"	0.125	107		70-130			
Surrogate: 4-Bromofluorobenzene	0.12		"	0.125	94.1		70-130			

Origins Laboratory, Inc.



The results in this report apply to the samples analyzed in accordance with the chain of custody document. This analytical report must be reproduced in its entirety.

Eagle Environmental Consulting, Inc.
8000 W 44th Ave
Wheat Ridge CO 80033

Martin C Eckert III
Project Number: [none]
Project: Noble - Harper/Kona A21 Econode

Volatile Organic Compounds by GC/MS SW846 8260D - Quality Control
Origins Laboratory, Inc.

Analyte	Result	Reporting Limit	Units	Spike Level	Source Result	%REC	%REC Limits	RPD	RPD Limit	Notes
---------	--------	-----------------	-------	-------------	---------------	------	-------------	-----	-----------	-------

Batch B2L2728 - EPA 5030 (soil)

LCS (B2L2728-BS1)

Prepared: 12/27/2022 Analyzed: 12/27/2022

1,2,4-Trimethylbenzene	0.0854	0.00200	mg/kg	0.100		85.4	70-130			
1,3,5-Trimethylbenzene	0.0856	0.00200	"	0.100		85.6	70-130			
Benzene	0.102	0.00200	"	0.100		102	70-130			
Ethylbenzene	0.101	0.00200	"	0.100		101	70-130			
Naphthalene	0.104	0.00380	"	0.100		104	70-130			
Toluene	0.101	0.00200	"	0.100		101	70-130			
o-Xylene	0.0928	0.00200	"	0.100		92.8	70-130			
m,p-Xylene	0.192	0.00400	"	0.200		96.1	70-130			
Surrogate: 1,2-Dichloroethane-d4	0.14		"	0.125		115	70-130			
Surrogate: Toluene-d8	0.13		"	0.125		108	70-130			
Surrogate: 4-Bromofluorobenzene	0.13		"	0.125		101	70-130			

Origins Laboratory, Inc.



The results in this report apply to the samples analyzed in accordance with the chain of custody document. This analytical report must be reproduced in its entirety.

Eagle Environmental Consulting, Inc.
8000 W 44th Ave
Wheat Ridge CO 80033

Martin C Eckert III
Project Number: [none]
Project: Noble - Harper/Kona A21 Econode

Volatile Organic Compounds by GC/MS SW846 8260D - Quality Control
Origins Laboratory, Inc.

Analyte	Result	Reporting Limit	Units	Spike Level	Source Result	%REC	%REC Limits	RPD	RPD Limit	Notes
---------	--------	-----------------	-------	-------------	---------------	------	-------------	-----	-----------	-------

Batch B2L2728 - EPA 5030 (soil)

Matrix Spike (B2L2728-MS1)		Source: Y212572-02			Prepared: 12/27/2022 Analyzed: 12/27/2022					
1,2,4-Trimethylbenzene	0.0910	0.00200	mg/kg	0.100	0.0158	75.3	70-130			
1,3,5-Trimethylbenzene	0.0843	0.00200	"	0.100	0.00512	79.1	70-130			
Benzene	0.0941	0.00200	"	0.100	0.000960	93.1	70-130			
Ethylbenzene	0.0908	0.00200	"	0.100	ND	90.8	70-130			
Naphthalene	0.112	0.00380	"	0.100	0.00254	109	70-130			
Toluene	0.0954	0.00200	"	0.100	0.0110	84.4	70-130			
o-Xylene	0.0905	0.00200	"	0.100	0.00790	82.6	70-130			
m,p-Xylene	0.185	0.00400	"	0.200	0.0179	83.8	70-130			
Surrogate: 1,2-Dichloroethane-d4	0.15		"	0.125		123	70-130			
Surrogate: Toluene-d8	0.13		"	0.125		104	70-130			
Surrogate: 4-Bromofluorobenzene	0.12		"	0.125		99.7	70-130			

Origins Laboratory, Inc.



The results in this report apply to the samples analyzed in accordance with the chain of custody document. This analytical report must be reproduced in its entirety.

Eagle Environmental Consulting, Inc.
8000 W 44th Ave
Wheat Ridge CO 80033

Martin C Eckert III
Project Number: [none]
Project: Noble - Harper/Kona A21 Econode

Volatile Organic Compounds by GC/MS SW846 8260D - Quality Control
Origins Laboratory, Inc.

Analyte	Result	Reporting Limit	Units	Spike Level	Source Result	%REC	%REC Limits	RPD	RPD Limit	Notes
Batch B2L2728 - EPA 5030 (soil)										
Matrix Spike Dup (B2L2728-MSD1)		Source: Y212572-02			Prepared: 12/27/2022 Analyzed: 12/27/2022					
1,2,4-Trimethylbenzene	0.101	0.00200	mg/kg	0.100	0.0158	84.7	70-130	9.88	20	
1,3,5-Trimethylbenzene	0.0753	0.00200	"	0.100	0.00512	70.1	70-130	11.3	20	
Benzene	0.0871	0.00200	"	0.100	0.000960	86.1	70-130	7.71	20	
Ethylbenzene	0.0778	0.00200	"	0.100	ND	77.8	70-130	15.4	20	
Naphthalene	0.0915	0.00380	"	0.100	0.00254	89.0	70-130	19.7	20	
Toluene	0.0866	0.00200	"	0.100	0.0110	75.6	70-130	9.61	20	
o-Xylene	0.0847	0.00200	"	0.100	0.00790	76.8	70-130	6.65	20	
m,p-Xylene	0.174	0.00400	"	0.200	0.0179	77.8	70-130	6.65	20	
Surrogate: 1,2-Dichloroethane-d4	0.16		"	0.125		126	70-130			
Surrogate: Toluene-d8	0.13		"	0.125		104	70-130			
Surrogate: 4-Bromofluorobenzene	0.12		"	0.125		96.4	70-130			

Origins Laboratory, Inc.



The results in this report apply to the samples analyzed in accordance with the chain of custody document. This analytical report must be reproduced in its entirety.

Eagle Environmental Consulting, Inc.
8000 W 44th Ave
Wheat Ridge CO 80033

Martin C Eckert III
Project Number: [none]
Project: Noble - Harper/Kona A21 Econode

Volatile Organic Compounds by GC/MS SW846 8260D - Quality Control

Origins Laboratory, Inc.

Analyte	Result	Reporting Limit	Units	Spike Level	Source Result	%REC	%REC Limits	RPD	RPD Limit	Notes
---------	--------	-----------------	-------	-------------	---------------	------	-------------	-----	-----------	-------

Metals by EPA 6000/7000 Series Methods - Quality Control

Origins Laboratory, Inc.

Analyte	Result	Reporting Limit	Units	Spike Level	Source Result	%REC	%REC Limits	RPD	RPD Limit	Notes
---------	--------	-----------------	-------	-------------	---------------	------	-------------	-----	-----------	-------

Batch B2L2817 - EPA 3050B

Blank (B2L2817-BLK1)

Prepared: 12/29/2022 Analyzed: 12/29/2022

Arsenic	ND	0.000100	mg/kg
Barium	ND	0.0100	"
Cadmium	ND	0.000100	"
Copper	ND	0.0100	"
Lead	ND	0.0100	"
Nickel	ND	0.0100	"
Selenium	ND	0.000100	"
Silver	ND	0.000100	"
Zinc	ND	0.100	"

LCS (B2L2817-BS1)

Prepared: 12/29/2022 Analyzed: 12/29/2022

Arsenic	0.0510	0.000100	mg/kg	0.0500	102	80-120
Barium	4.96	0.0100	"	5.00	99.1	80-120
Cadmium	0.0518	0.000100	"	0.0500	104	80-120
Copper	0.520	0.0100	"	0.500	104	80-120
Lead	0.0515	0.0100	"	0.0500	103	80-120
Nickel	0.0526	0.0100	"	0.0500	105	80-120
Selenium	0.0500	0.000100	"	0.0500	99.9	80-120
Silver	0.0508	0.000100	"	0.0500	102	80-120
Zinc	0.500	0.100	"	0.500	100	80-120

Matrix Spike (B2L2817-MS1)

Source: Y212591-01

Prepared: 12/29/2022 Analyzed: 12/29/2022

Origins Laboratory, Inc.



The results in this report apply to the samples analyzed in accordance with the chain of custody document. This analytical report must be reproduced in its entirety.

Eagle Environmental Consulting, Inc.
8000 W 44th Ave
Wheat Ridge CO 80033

Martin C Eckert III
Project Number: [none]
Project: Noble - Harper/Kona A21 Econode

Metals by EPA 6000/7000 Series Methods - Quality Control
Origins Laboratory, Inc.

Analyte	Result	Reporting Limit	Units	Spike Level	Source Result	%REC	%REC Limits	RPD	RPD Limit	Notes
Batch B2L2817 - EPA 3050B										
Matrix Spike (B2L2817-MS1)		Source: Y212591-01			Prepared: 12/29/2022 Analyzed: 12/29/2022					
Arsenic	10.1	0.0945	mg/kg	4.73	2.91	153	75-125			QM-07
Barium	653	9.45	"	473	86.9	120	75-125			
Cadmium	5.69	0.0945	"	4.73	0.111	118	75-125			
Copper	60.3	9.45	"	47.3	7.27	112	75-125			
Lead	12.0	9.45	"	4.73	5.28	141	75-125			QM-07
Nickel	12.9	9.45	"	4.73	7.74	110	75-125			
Selenium	5.15	0.0945	"	4.73	0.254	103	75-125			
Silver	5.53	0.0945	"	4.73	0.0283	116	75-125			
Zinc	81.8	94.5	"	47.3	27.9	114	75-125			
Matrix Spike Dup (B2L2817-MSD1)		Source: Y212591-01			Prepared: 12/29/2022 Analyzed: 12/29/2022					
Arsenic	7.88	0.0979	mg/kg	4.89	2.91	102	75-125	25.1	20	QR-DUP
Barium	612	9.79	"	489	86.9	107	75-125	6.47	20	
Cadmium	5.47	0.0979	"	4.89	0.111	110	75-125	3.93	20	
Copper	58.3	9.79	"	48.9	7.27	104	75-125	3.32	20	
Lead	10.8	9.79	"	4.89	5.28	113	75-125	10.0	20	
Nickel	12.3	9.79	"	4.89	7.74	92.6	75-125	5.25	20	
Selenium	4.60	0.0979	"	4.89	0.254	88.8	75-125	11.2	20	
Silver	5.17	0.0979	"	4.89	0.0283	105	75-125	6.75	20	
Zinc	82.6	97.9	"	48.9	27.9	112	75-125	0.974	20	

Origins Laboratory, Inc.



The results in this report apply to the samples analyzed in accordance with the chain of custody document. This analytical report must be reproduced in its entirety.

Eagle Environmental Consulting, Inc.
8000 W 44th Ave
Wheat Ridge CO 80033

Martin C Eckert III
Project Number: [none]
Project: Noble - Harper/Kona A21 Econode

Classical Chemistry Parameters - Quality Control

Origins Laboratory, Inc.

Analyte	Result	Reporting Limit	Units	Spike Level	Source Result	%REC	%REC Limits	RPD	RPD Limit	Notes
---------	--------	-----------------	-------	-------------	---------------	------	-------------	-----	-----------	-------

Batch B2L2803 - DTPA Sorbitol Preparation

Blank (B2L2803-BLK1)

Prepared: 12/28/2022 Analyzed: 12/29/2022

Boron ND 0.100 mg/L

Duplicate (B2L2803-DUP1)

Source: Y212494-02

Prepared: 12/28/2022 Analyzed: 12/29/2022

Boron 7.28 0.101 mg/L 7.42 1.80 50

Batch B2L2805 - Saturated Paste Metals

Blank (B2L2805-BLK1)

Prepared: 12/28/2022 Analyzed: 12/29/2022

Calcium PPM ND 10.0 mg/L

SAR 0.00 SAR

Magnesium PPM ND 10.0 mg/L

Sodium PPM ND 10.0 "

Duplicate (B2L2805-DUP1)

Source: Y212529-02

Prepared: 12/28/2022 Analyzed: 12/29/2022

Calcium PPM 39.8 10.0 mg/L 42.8 7.33 50

SAR 0.00 SAR 1.74 200 200

Magnesium PPM 40.5 10.0 mg/L 43.6 7.43 50

Sodium PPM 62.7 10.0 " 67.5 7.37 50

Origins Laboratory, Inc.



The results in this report apply to the samples analyzed in accordance with the chain of custody document. This analytical report must be reproduced in its entirety.

Eagle Environmental Consulting, Inc.
8000 W 44th Ave
Wheat Ridge CO 80033

Martin C Eckert III
Project Number: [none]
Project: Noble - Harper/Kona A21 Econode

Saturated Paste - Quality Control
Origins Laboratory, Inc.

Analyte	Result	Reporting Limit	Units	Spike Level	Source Result	%REC	%REC Limits	RPD	RPD Limit	Notes
Batch B2L2807 - Saturated Paste pH/EC										
Blank (B2L2807-BLK1)					Prepared: 12/28/2022 Analyzed: 12/29/2022					
Specific Conductance (EC)	ND	0.00500	mmhos/cm							
Duplicate (B2L2807-DUP1)					Source: Y212529-02 Prepared: 12/28/2022 Analyzed: 12/29/2022					
pH	7.84		pH Units		8.02			2.27	25	
Specific Conductance (EC)	0.843	0.00500	mmhos/cm		0.857			1.66	25	

Origins Laboratory, Inc.



The results in this report apply to the samples analyzed in accordance with the chain of custody document. This analytical report must be reproduced in its entirety.

Eagle Environmental Consulting, Inc.
8000 W 44th Ave
Wheat Ridge CO 80033

Martin C Eckert III
Project Number: [none]
Project: Noble - Harper/Kona A21 Econode

PAH by 8270D SIM - Quality Control
Waypoint Analytical, LLC.

Analyte	Result	Reporting Limit	Units	Spike Level	Source Result	%REC	%REC Limits	RPD	RPD Limit	Notes
---------	--------	-----------------	-------	-------------	---------------	------	-------------	-----	-----------	-------

Batch L656721 - 3550B

MSD (L 88331-MSD-L656721)		Source: 88331			Prepared: 01/04/2023 Analyzed: 01/04/2023					
Fluoranthene	0.104	0.00067	mg/Kg	0.162	<0.000394	64.1	30-130	6.5	30	
Pyrene	0.1	0.00067	"	0.162	<0.000643	61.7	30-130	8.6	30	
Naphthalene	0.11	0.00201	"	0.162	<0.00145	67.9	30-130	1.8	30	
2-Methylnaphthalene	0.0999	0.00201	"	0.162	<0.00194	61.6	30-130	2	30	
Indeno(1,2,3-cd)pyrene	0.0913	0.00067	"	0.162	<0.000627	56.3	30-130	43.4	30	*
Fluorene	0.113	0.00067	"	0.162	<0.000286	69.7	30-130	3.4	30	
Acenaphthene	0.102	0.00067	"	0.162	<0.000304	62.9	30-130	1.9	30	
Anthracene	0.111	0.00067	"	0.162	<0.000334	68.5	30-130	4.4	30	
Benzo(a)pyrene	0.095	0.00067	"	0.162	<0.000468	58.6	30-130	16.4	30	
Benzo(b)fluoranthene	0.0637	0.00067	"	0.162	<0.000585	39.3	30-130	46.2	30	*
Benzo(k)fluoranthene	0.0717	0.00067	"	0.162	<0.000437	44.2	30-130	30.6	30	*
Chrysene	0.107	0.00067	"	0.162	<0.000624	66	30-130	8.9	30	
Dibenz(a,h)anthracene	0.0987	0.00067	"	0.162	<0.000614	60.9	30-130	46.7	30	*
Benzo(a)anthracene	0.102	0.00067	"	0.162	<0.000493	62.9	30-130	7.5	30	
1-Methylnaphthalene	0.0978	0.00201	"	0.162	<0.00109	60.3	30-130	1.1	30	
Surrogate: Nitrobenzene-d5	56.9		"	0.325	158	56.9	29-110			
Surrogate: 2-Fluorobiphenyl	50.4		"	0.325	139	50.4	33-115			
Surrogate: 4-Terphenyl-d14	51.3		"	0.325	142	51.3	33-122			

MS (L 88331-MS-L656721)		Source: 88331			Prepared: 01/04/2023 Analyzed: 01/04/2023					
Naphthalene	0.112	0.00201	mg/Kg	0.163	<0.00145	68.7	30-130			
Benzo(b)fluoranthene	0.102	0.00067	"	0.163	<0.000585	62.5	30-130			
Pyrene	0.109	0.00067	"	0.163	<0.000643	66.8	30-130			
Benzo(k)fluoranthene	0.0977	0.00067	"	0.163	<0.000437	59.9	30-130			
Chrysene	0.117	0.00067	"	0.163	<0.000624	71.7	30-130			
Dibenz(a,h)anthracene	0.159	0.00067	"	0.163	<0.000614	97.5	30-130			
Fluoranthene	0.111	0.00067	"	0.163	<0.000394	68	30-130			

Origins Laboratory, Inc.



The results in this report apply to the samples analyzed in accordance with the chain of custody document. This analytical report must be reproduced in its entirety.

Eagle Environmental Consulting, Inc.
8000 W 44th Ave
Wheat Ridge CO 80033

Martin C Eckert III
Project Number: [none]
Project: Noble - Harper/Kona A21 Econode

PAH by 8270D SIM - Quality Control
Waypoint Analytical, LLC.

Analyte	Result	Reporting Limit	Units	Spike Level	Source Result	%REC	%REC Limits	RPD	RPD Limit	Notes
---------	--------	-----------------	-------	-------------	---------------	------	-------------	-----	-----------	-------

Batch L656721 - 3550B

MS (L 88331-MS-L656721)		Source: 88331			Prepared: 01/04/2023 Analyzed: 01/04/2023					
Indeno(1,2,3-cd)pyrene	0.142	0.00067	mg/Kg	0.163	<0.000627	87.1	30-130			
Anthracene	0.116	0.00067	"	0.163	<0.000334	71.1	30-130			
Fluorene	0.117	0.00067	"	0.163	<0.000286	71.7	30-130			
Benzo(a)pyrene	0.112	0.00067	"	0.163	<0.000468	68.7	30-130			
Acenaphthene	0.104	0.00067	"	0.163	<0.000304	63.8	30-130			
2-Methylnaphthalene	0.102	0.00201	"	0.163	<0.00194	62.5	30-130			
1-Methylnaphthalene	0.0989	0.00201	"	0.163	<0.00109	60.6	30-130			
Benzo(a)anthracene	0.11	0.00067	"	0.163	<0.000493	67.4	30-130			
Surrogate: Nitrobenzene-d5	57.4		"	0.327	158	57.4	29-110			
Surrogate: 4-Terphenyl-d14	53.2		"	0.327	142	53.2	33-122			
Surrogate: 2-Fluorobiphenyl	50.1		"	0.327	139	50.1	33-115			

LCS (LCS-L656721)		Prepared: 01/04/2023 Analyzed: 01/04/2023								
Benzo(b)fluoranthene	0.111	0.00067	mg/Kg	0.167		66.4	30-130			
Benzo(k)fluoranthene	0.0996	0.00067	"	0.167		59.6	30-130			
Chrysene	0.108	0.00067	"	0.167		64.6	30-130			
Dibenz(a,h)anthracene	0.0896	0.00067	"	0.167		53.6	30-130			
Fluorene	0.0992	0.00067	"	0.167		59.4	30-130			
Benzo(a)pyrene	0.106	0.00067	"	0.167		63.4	30-130			
Fluoranthene	0.111	0.00067	"	0.167		66.4	30-130			
Pyrene	0.105	0.00067	"	0.167		62.8	30-130			
Naphthalene	0.0869	0.00201	"	0.167		52	30-130			
Anthracene	0.0942	0.00067	"	0.167		56.4	30-130			
Acenaphthene	0.0923	0.00067	"	0.167		55.2	30-130			
2-Methylnaphthalene	0.0997	0.00201	"	0.167		59.7	30-130			
1-Methylnaphthalene	0.0866	0.00201	"	0.167		51.8	30-130			
Indeno(1,2,3-cd)pyrene	0.0871	0.00067	"	0.167		52.1	30-130			

Origins Laboratory, Inc.



The results in this report apply to the samples analyzed in accordance with the chain of custody document. This analytical report must be reproduced in its entirety.

Eagle Environmental Consulting, Inc.
8000 W 44th Ave
Wheat Ridge CO 80033

Martin C Eckert III
Project Number: [none]
Project: Noble - Harper/Kona A21 Econode

PAH by 8270D SIM - Quality Control
Waypoint Analytical, LLC.

Analyte	Result	Reporting Limit	Units	Spike Level	Source Result	%REC	%REC Limits	RPD	RPD Limit	Notes
Batch L656721 - 3550B										
LCS (LCS-L656721)					Prepared: 01/04/2023 Analyzed: 01/04/2023					
Benzo(a)anthracene	0.105	0.00067	mg/Kg	0.167		62.8	30-130			
Surrogate: Nitrobenzene-d5	53.7		"	0.333		53.7	29-110			
Surrogate: 4-Terphenyl-d14	58.8		"	0.333		58.8	33-122			
Surrogate: 2-Fluorobiphenyl	49.8		"	0.333		49.8	33-115			
LRB (LRB-L656721)					Prepared: 01/04/2023 Analyzed: 01/04/2023					
Naphthalene	ND	0.00201	mg/Kg				-			
Benzo(b)fluoranthene	ND	0.00067	"				-			
Benzo(k)fluoranthene	ND	0.00067	"				-			
Chrysene	ND	0.00067	"				-			
Dibenz(a,h)anthracene	ND	0.00067	"				-			
Fluoranthene	ND	0.00067	"				-			
Benzo(a)pyrene	ND	0.00067	"				-			
Indeno(1,2,3-cd)pyrene	ND	0.00067	"				-			
Fluorene	ND	0.00067	"				-			
Benzo(a)anthracene	ND	0.00067	"				-			
Anthracene	ND	0.00067	"				-			
Acenaphthene	ND	0.00067	"				-			
2-Methylnaphthalene	ND	0.00201	"				-			
1-Methylnaphthalene	ND	0.00201	"				-			
Pyrene	ND	0.00067	"				-			
Surrogate: 2-Fluorobiphenyl	71.1		"	0.333		71.1	33-115			
Surrogate: Nitrobenzene-d5	79.5		"	0.333		79.5	29-110			
Surrogate: 4-Terphenyl-d14	75		"	0.333		75	33-122			

Origins Laboratory, Inc.



The results in this report apply to the samples analyzed in accordance with the chain of custody document. This analytical report must be reproduced in its entirety.

Eagle Environmental Consulting, Inc.
8000 W 44th Ave
Wheat Ridge CO 80033

Martin C Eckert III
Project Number: [none]
Project: Noble - Harper/Kona A21 Econode

Total Metals by 7196A - Quality Control Waypoint Analytical, LLC.

Analyte	Result	Reporting Limit	Units	Spike Level	Source Result	%REC	%REC Limits	RPD	RPD Limit	Notes
Batch L656746 -										
DUP (L 88331-DUP)		Source: 88331			Prepared: Analyzed: 01/04/2023					
Chromium, Hexavalent	ND	2.5	mg/Kg		<2.50	-		0	20	
MS (L 88331-MS)		Source: 88331			Prepared: Analyzed: 01/04/2023					
Chromium, Hexavalent	24.6	2.5	mg/Kg	38.7	<1.22	64	75-125			*
MSD (L 88331-MSD)		Source: 88331			Prepared: Analyzed: 01/04/2023					
Chromium, Hexavalent	600	50	mg/Kg	734	<24.4	82	75-125			
LCS (LCS)					Prepared: Analyzed: 01/04/2023					
Chromium, Hexavalent	6.3	0.5	mg/Kg	8		79	75-125			
LRB (LRB)					Prepared: Analyzed: 01/04/2023					
Chromium, Hexavalent	ND	0.5	mg/Kg				-			

Origins Laboratory, Inc.



The results in this report apply to the samples analyzed in accordance with the chain of custody document. This analytical report must be reproduced in its entirety.

Eagle Environmental Consulting, Inc.

8000 W 44th Ave

Wheat Ridge CO 80033

Martin C Eckert III

Project Number: [none]

Project: Noble - Harper/Kona A21 Econode

Notes and Definitions

U Sample is Non-Detect.

S-06 The recovery of this surrogate is outside control limits due to sample dilution required from high analyte concentration and/or matrix interference's.

QR-DUP RPD exceeds QC acceptance criteria, this indicates source sample is not homogenous.

QM-07 The spike recovery was outside acceptance limits for the MS and/or MSD. The batch was accepted based on acceptable LCS recovery.

J Estimated Value. Analyte below reported quantitation limit.

* QC Failure

ND Analyte NOT DETECTED at or above the reporting limit

RPD Relative Percent Difference

All soil results are reported on a wet weight basis.

Origins Laboratory, Inc.



The results in this report apply to the samples analyzed in accordance with the chain of custody document. This analytical report must be reproduced in its entirety.



January 06, 2023

Eagle Environmental Consulting, Inc.

Martin C Eckert III

8000 W 44th Ave

Wheat Ridge CO 80033

Project Name - Noble - Harper/Kona A21 Econode Project Number - [none]

Attached are your analytical results for Noble - Harper/Kona A21 Econode received by Origins Laboratory, Inc. December 27, 2022. This project is associated with Origins project number Y212574-01.

The analytical results in the following report were analyzed under the guidelines of EPA Methods. These methods are identified as follows; "SW" are defined in SW-846, "EPA" are defined in 40CFR part 136 and "SM" are defined in the most current revision of Standard Methods For the Examination of Water and Wastewater.

The analytical results apply specifically to the samples and analyses specified per the attached Chain of Custody. As such, this report shall not be reproduced except in full, without the written approval of Origin's laboratory.

Unless otherwise noted, the analytical results for all soil samples are reported on a wet weight basis. All analytical analyses were performed under NELAP guidelines unless noted by a data qualifier.

Any holding time exceedances, deviations from the method specifications or deviations from Origins Laboratory's Standard Operating Procedures are outlined in the case narrative.

Thank you for selecting Origins for your analytical needs. Please contact us with any questions concerning this report, or if we can help with anything at all.

Origins Laboratory, Inc.
303.433.1322
o-squad@oelabinc.com



1725 Elk Place, Denver, CO 80211 | Phone: 303.433.1322 | Fax: 303.265.9645

Eagle Environmental Consulting, Inc.

8000 W 44th Ave

Wheat Ridge CO 80033

Martin C Eckert III

Project Number: [none]

Project: Noble - Harper/Kona A21 Econode

CROSS REFERENCE REPORT

Sample ID	Laboratory ID	Matrix	Date Sampled	Date Received
Background-01@0.5'	Y212574-01	Soil	December 27, 2022 13:00	12/27/2022 17:30

Origins Laboratory, Inc.



The results in this report apply to the samples analyzed in accordance with the chain of custody document. This analytical report must be reproduced in its entirety.

Eagle Environmental Consulting, Inc.
8000 W 44th Ave
Wheat Ridge CO 80033

Martin C Eckert III
Project Number: [none]
Project: Noble - Harper/Kona A21 Econode

Origins Laboratory

F-012207-01-R1
Effective Date: 01/09/12

Sample Receipt Checklist

Origins Work Order: W217574 Client: Eagle
Client Project ID: Harper Kona A21

Checklist Completed by: DE Shipped Via: HD
(UPS, FedEx, Hand Delivered, Pick-up, etc.)
Date/time completed: 12/22/2011 Airbill #: NA

Matrix(s) Received: (Check all that apply): ☒ Soil/Solid ☐ Water ☐ Other: _____
Cooler Number/Temperature: 1, 20 °C / _____ °C / _____ °C (Describe)
Thermometer ID: T604

Requirement Description	Yes	No	N/A	Comments (if any)
If samples require cooling, was the temperature between 0°C to ≤ 6°C ⁽¹⁾ ?	<input checked="" type="checkbox"/>			
Is there ice present (document if blue ice is used)	<input checked="" type="checkbox"/>			
Are custody seals present on cooler? (if so, document in comments if they are signed and dated, broken or intact)		<input checked="" type="checkbox"/>		
Are custody seals present on each sample container? (if so, document in comments if they are signed and dated, broken or intact)		<input checked="" type="checkbox"/>		
Were all samples received intact ⁽¹⁾ ?	<input checked="" type="checkbox"/>			
Was adequate sample volume provided ⁽¹⁾ ?	<input checked="" type="checkbox"/>			
Are short holding time analytes or samples with HTs due within 48 hours present ⁽¹⁾ ?		<input checked="" type="checkbox"/>		
Is a chain-of-custody (COC) present and filled out completely ⁽¹⁾ ?	<input checked="" type="checkbox"/>			
Does the COC agree with the number and type of sample bottles received ⁽¹⁾ ?	<input checked="" type="checkbox"/>			
Do the sample IDs on the bottle labels match the COC ⁽¹⁾ ?	<input checked="" type="checkbox"/>			
Is the COC properly relinquished by the client with date and time recorded ⁽¹⁾ ?	<input checked="" type="checkbox"/>			
For volatiles in water — is there headspace (> ¼ inch bubble) present? If yes, contact client and note in narrative.			<input checked="" type="checkbox"/>	
Are samples preserved that require preservation and was it checked ⁽¹⁾ ? (note ID of confirmation instrument used in comments) / (preservation is not confirmed for subcontracted analyses in order to insure sample integrity)/(pH < 2 for samples preserved with HNO ₃ , HCL, H ₂ SO ₄) / (pH > 10 for samples preserved with NaAsO ₂ +NaOH, ZnAc+NaOH)			<input checked="" type="checkbox"/>	
Additional Comments (if any):				

⁽¹⁾ if NO, then contact the client before proceeding with analysis and note date/time and person contacted as well as the corrective action to in the additional comments (above) and the case narrative.

Reviewed by (Project Manager) [Signature] Date/Time Reviewed 12/27/2012

Origins Laboratory, Inc.

[Signature]

The results in this report apply to the samples analyzed in accordance with the chain of custody document. This analytical report must be reproduced in its entirety.

Eagle Environmental Consulting, Inc.
8000 W 44th Ave
Wheat Ridge CO 80033

Martin C Eckert III
Project Number: [none]
Project: Noble - Harper/Kona A21 Econode

Background-01@0.5'

12/27/2022 1:00:00PM

Analyte	Result	Min Detection Limit	Reporting Limit	Units	Dilution	Batch	Prepared	Analyzed	Notes
---------	--------	---------------------	-----------------	-------	----------	-------	----------	----------	-------

Origins Laboratory, Inc. Y212574-01 (Soil)

Boron (DTPA Sorbitol)

Boron	1.28	0.0996	mg/L	1	B3A0502	01/05/2023	01/06/2023
-------	------	--------	------	---	---------	------------	------------

Metals by Saturated Paste by EPA 6010

Calcium	9.45	0.499	meq/L	10	[CALC]	12/28/2022	12/29/2022
Magnesium	9.19	0.823	"	"	"	"	"
Sodium	10.6	0.435	"	"	"	"	"

pH in Soil by 9045D

pH	8.18		pH Units	1	B2L2808	12/28/2022	12/29/2022
----	------	--	----------	---	---------	------------	------------

SAR by 20B Saturated Paste

SAR	3.49		SAR	1	B2L2806	12/28/2022	12/29/2022
-----	------	--	-----	---	---------	------------	------------

Specific Conductance Mod. 9050A

Specific Conductance (EC)	2.98	0.00500	mmhos/cm	1	B2L2808	12/28/2022	12/29/2022
---------------------------	------	---------	----------	---	---------	------------	------------

Table 915 metals by EPA 6020B

Arsenic	5.00	0.0953	mg/kg	10	B2L2801	12/28/2022	12/29/2022
Barium	108	9.53	"	"	"	"	"
Cadmium	0.203	0.0953	"	"	"	"	"
Copper	ND	9.53	"	"	"	"	"

Origins Laboratory, Inc.



The results in this report apply to the samples analyzed in accordance with the chain of custody document. This analytical report must be reproduced in its entirety.

Eagle Environmental Consulting, Inc.
8000 W 44th Ave
Wheat Ridge CO 80033

Martin C Eckert III
Project Number: [none]
Project: Noble - Harper/Kona A21 Econode

Background-01@0.5'

12/27/2022 1:00:00PM

Analyte	Result	Min Detection Limit	Reporting Limit	Units	Dilution	Batch	Prepared	Analyzed	Notes
---------	--------	------------------------	--------------------	-------	----------	-------	----------	----------	-------

Origins Laboratory, Inc.
Y212574-01 (Soil)

Table 915 metals by EPA 6020B

Lead	ND	9.53	mg/kg	10	B2L2801	12/28/2022	12/29/2022
Nickel	ND	9.53	"	"	"	"	"
Selenium	0.228	0.0953	"	"	"	"	"
Silver	ND	0.0953	"	"	"	"	"
Zinc	ND	95.3	"	"	"	"	"

Total Metals by 7196A

Chromium, Hexavalent	ND	1.22	2.5	mg/Kg	5	L656745	12/27/2022	01/04/2023
----------------------	----	------	-----	-------	---	---------	------------	------------

Origins Laboratory, Inc.



The results in this report apply to the samples analyzed in accordance with the chain of custody document. This analytical report must be reproduced in its entirety.

Eagle Environmental Consulting, Inc.
8000 W 44th Ave
Wheat Ridge CO 80033

Martin C Eckert III
Project Number: [none]
Project: Noble - Harper/Kona A21 Econode

Metals by EPA 6000/7000 Series Methods - Quality Control
Origins Laboratory, Inc.

Analyte	Result	Reporting Limit	Units	Spike Level	Source Result	%REC	%REC Limits	RPD	RPD Limit	Notes
---------	--------	-----------------	-------	-------------	---------------	------	-------------	-----	-----------	-------

Batch B2L2801 - EPA 3050B

Blank (B2L2801-BLK1)

Prepared: 12/28/2022 Analyzed: 12/29/2022

Arsenic	ND	0.000100	mg/kg
Barium	ND	0.0100	"
Cadmium	ND	0.000100	"
Copper	ND	0.0100	"
Lead	ND	0.0100	"
Nickel	ND	0.0100	"
Selenium	ND	0.000100	"
Silver	ND	0.000100	"
Zinc	ND	0.100	"

LCS (B2L2801-BS1)

Prepared: 12/28/2022 Analyzed: 12/29/2022

Arsenic	0.0520	0.000100	mg/kg	0.0500	104	80-120
Barium	5.09	0.0100	"	5.00	102	80-120
Cadmium	0.0528	0.000100	"	0.0500	106	80-120
Copper	0.515	0.0100	"	0.500	103	80-120
Lead	0.0516	0.0100	"	0.0500	103	80-120
Nickel	0.0522	0.0100	"	0.0500	104	80-120
Selenium	0.0505	0.000100	"	0.0500	101	80-120
Silver	0.0528	0.000100	"	0.0500	106	80-120
Zinc	0.506	0.100	"	0.500	101	80-120

Matrix Spike (B2L2801-MS1)

Source: Y212569-01

Prepared: 12/28/2022 Analyzed: 12/29/2022

Arsenic	9.21	0.0926	mg/kg	4.63	3.91	114	75-125
Barium	696	9.26	"	463	227	101	75-125
Cadmium	6.16	0.0926	"	4.63	0.443	124	75-125
Copper	69.0	9.26	"	46.3	17.8	111	75-125
Lead	14.3	9.26	"	4.63	8.96	115	75-125

Origins Laboratory, Inc.



The results in this report apply to the samples analyzed in accordance with the chain of custody document. This analytical report must be reproduced in its entirety.

Eagle Environmental Consulting, Inc.
8000 W 44th Ave
Wheat Ridge CO 80033

Martin C Eckert III
Project Number: [none]
Project: Noble - Harper/Kona A21 Econode

Metals by EPA 6000/7000 Series Methods - Quality Control
Origins Laboratory, Inc.

Analyte	Result	Reporting Limit	Units	Spike Level	Source Result	%REC	%REC Limits	RPD	RPD Limit	Notes
Batch B2L2801 - EPA 3050B										
Matrix Spike (B2L2801-MS1)			Source: Y212569-01		Prepared: 12/28/2022 Analyzed: 12/29/2022					
Nickel	13.4	9.26	mg/kg	4.63	9.05	94.9	75-125			
Selenium	4.65	0.0926	"	4.63	0.314	93.7	75-125			
Silver	5.75	0.0926	"	4.63	0.0745	123	75-125			
Zinc	107	92.6	"	46.3	58.2	105	75-125			
Matrix Spike Dup (B2L2801-MSD1)			Source: Y212569-01		Prepared: 12/28/2022 Analyzed: 12/29/2022					
Arsenic	8.32	0.0897	mg/kg	4.49	3.91	98.4	75-125	10.1	20	
Barium	619	8.97	"	449	227	87.4	75-125	11.8	20	
Cadmium	5.17	0.0897	"	4.49	0.443	105	75-125	17.5	20	
Copper	60.6	8.97	"	44.9	17.8	95.3	75-125	13.0	20	
Lead	13.8	8.97	"	4.49	8.96	107	75-125	3.62	20	
Nickel	13.1	8.97	"	4.49	9.05	90.6	75-125	2.48	20	
Selenium	4.48	0.0897	"	4.49	0.314	92.8	75-125	3.85	20	
Silver	4.67	0.0897	"	4.49	0.0745	102	75-125	20.8	20	QR-02
Zinc	103	89.7	"	44.9	58.2	98.9	75-125	3.93	20	

Origins Laboratory, Inc.



The results in this report apply to the samples analyzed in accordance with the chain of custody document. This analytical report must be reproduced in its entirety.

Eagle Environmental Consulting, Inc.
8000 W 44th Ave
Wheat Ridge CO 80033

Martin C Eckert III
Project Number: [none]
Project: Noble - Harper/Kona A21 Econode

Classical Chemistry Parameters - Quality Control

Origins Laboratory, Inc.

Analyte	Result	Reporting Limit	Units	Spike Level	Source Result	%REC	%REC Limits	RPD	RPD Limit	Notes
---------	--------	-----------------	-------	-------------	---------------	------	-------------	-----	-----------	-------

Batch B2L2806 - Saturated Paste Metals

Blank (B2L2806-BLK1)

Prepared: 12/28/2022 Analyzed: 12/29/2022

Calcium PPM	ND	10.0	mg/L
SAR	0.00		SAR
Magnesium PPM	ND	10.0	mg/L
Sodium PPM	ND	10.0	"

Duplicate (B2L2806-DUP1)

Source: Y212569-01

Prepared: 12/28/2022 Analyzed: 12/29/2022

Calcium PPM	916	10.0	mg/L	817	11.5	50
SAR	0.00		SAR	2.39	200	200
Magnesium PPM	324	10.0	mg/L	275	16.7	50
Sodium PPM	369	10.0	"	309	17.7	50

Batch B3A0502 - DTPA Sorbitol Preparation

Blank (B3A0502-BLK1)

Prepared: 01/05/2023 Analyzed: 01/06/2023

Boron	ND	0.100	mg/L
-------	----	-------	------

Duplicate (B3A0502-DUP1)

Source: Y301021-14

Prepared: 01/05/2023 Analyzed: 01/06/2023

Boron	1.06	0.0996	mg/L	1.06	0.393	50
-------	------	--------	------	------	-------	----

Origins Laboratory, Inc.



The results in this report apply to the samples analyzed in accordance with the chain of custody document. This analytical report must be reproduced in its entirety.

Eagle Environmental Consulting, Inc.
8000 W 44th Ave
Wheat Ridge CO 80033

Martin C Eckert III
Project Number: [none]
Project: Noble - Harper/Kona A21 Econode

Saturated Paste - Quality Control Origins Laboratory, Inc.

Analyte	Result	Reporting Limit	Units	Spike Level	Source Result	%REC	%REC Limits	RPD	RPD Limit	Notes
Batch B2L2808 - Saturated Paste pH/EC										
Blank (B2L2808-BLK1)					Prepared: 12/28/2022 Analyzed: 12/29/2022					
Specific Conductance (EC)	ND	0.00500	mmhos/cm							
Duplicate (B2L2808-DUP1)					Source: Y212569-01 Prepared: 12/28/2022 Analyzed: 12/29/2022					
pH	7.65		pH Units		7.75			1.30	25	
Specific Conductance (EC)	7.83	0.00500	mmhos/cm		6.81			13.9	25	

Origins Laboratory, Inc.



The results in this report apply to the samples analyzed in accordance with the chain of custody document. This analytical report must be reproduced in its entirety.

Eagle Environmental Consulting, Inc.
8000 W 44th Ave
Wheat Ridge CO 80033

Martin C Eckert III
Project Number: [none]
Project: Noble - Harper/Kona A21 Econode

Total Metals by 7196A - Quality Control Waypoint Analytical, LLC.

Analyte	Result	Reporting Limit	Units	Spike Level	Source Result	%REC	%REC Limits	RPD	RPD Limit	Notes
Batch L656745 -										
DUP (L 88325-DUP)		Source: 88325			Prepared: Analyzed: 01/04/2023					
Chromium, Hexavalent	ND	0.503	mg/Kg		<0.503	-		0	20	
MS (L 88325-MS)		Source: 88325			Prepared: Analyzed: 01/04/2023					
Chromium, Hexavalent	32.3	2.5	mg/Kg	39.5	< 0.244	82	75-125			
MSD (L 88325-MSD)		Source: 88325			Prepared: Analyzed: 01/04/2023					
Chromium, Hexavalent	457	50	mg/Kg	601	<24.4	76	75-125			
LCS (LCS)					Prepared: Analyzed: 01/04/2023					
Chromium, Hexavalent	6.19	0.5	mg/Kg	8		77	75-125			
LRB (LRB)					Prepared: Analyzed: 01/04/2023					
Chromium, Hexavalent	ND	0.5	mg/Kg							

Origins Laboratory, Inc.



The results in this report apply to the samples analyzed in accordance with the chain of custody document. This analytical report must be reproduced in its entirety.

Eagle Environmental Consulting, Inc.

8000 W 44th Ave

Wheat Ridge CO 80033

Martin C Eckert III

Project Number: [none]

Project: Noble - Harper/Kona A21 Econode

Notes and Definitions

QR-02 The RPD result exceeded the QC control limits; however, both percent recoveries were acceptable. Sample results for the QC batch were accepted based on percent recoveries and completeness of QC data.

ND Analyte NOT DETECTED at or above the reporting limit

RPD Relative Percent Difference

All soil results are reported on a wet weight basis.

Origins Laboratory, Inc.



The results in this report apply to the samples analyzed in accordance with the chain of custody document. This analytical report must be reproduced in its entirety.