

Project: Rio Blanco County, CO
 Site: ELU O13 496 Pad
 Well: ELU O13 FED 25C-13 496
 Wellbore: Wellbore #1
 Design: Design #3
 Latitude: 39.698696
 Longitude: -108.115081
 Ground Level: 8118.0
 RKB @ 8143.0usft (25')

PROJECT DETAILS: Rio Blanco County, CO
 Geodetic System: Universal Transverse Mercator (US Survey Feet)
 Datum: NAD 1927 - Western US
 Ellipsoid: Clarke 1886
 Zone: Zone 12N (114 W to 108 W)
 System Datum: Mean Sea Level

REFERENCE INFORMATION
 Vertical (TVD) Reference: RKB @ 8143.0usft (25')
 Section (VS) Reference: Slot - 25C-13(0.0N, 0.0E)
 Measured Depth Reference: RKB @ 8143.0usft (25')
 Calculation Method: Minimum Curvature

FORMATION TOP DETAILS

TVDPath	MDPath	Formation
3971.0	4060.1	Wasatch
6371.0	6527.4	Wasatch G
6671.0	6835.8	Fort Union
8645.0	8856.9	Ohio Creek
9147.0	9359.0	Williams Fork
12082.0	12294.8	Cameo
12387.0	12599.9	Rollins

SECTION DETAILS

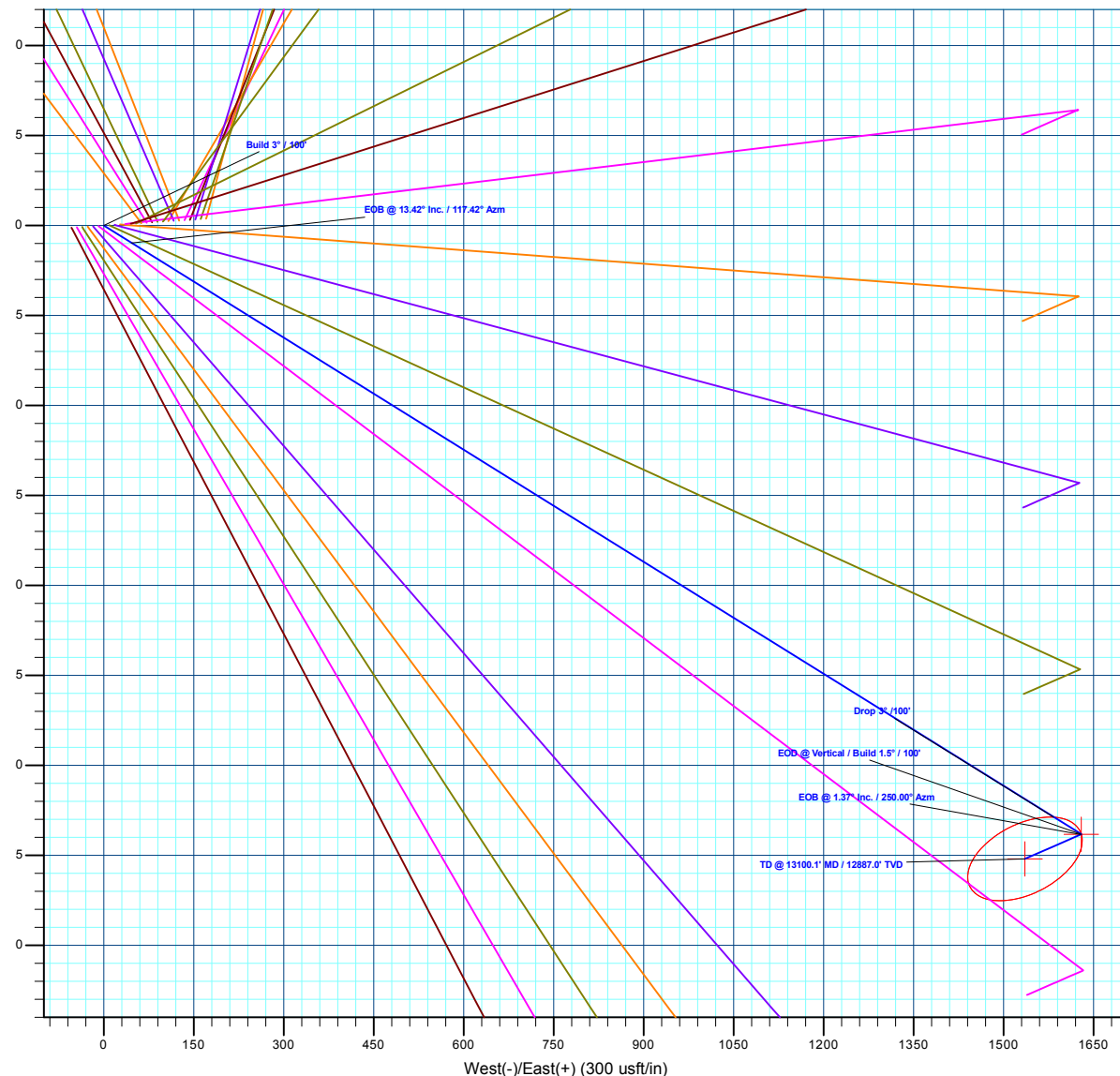
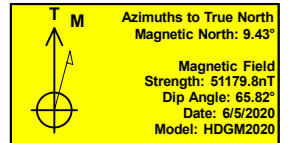
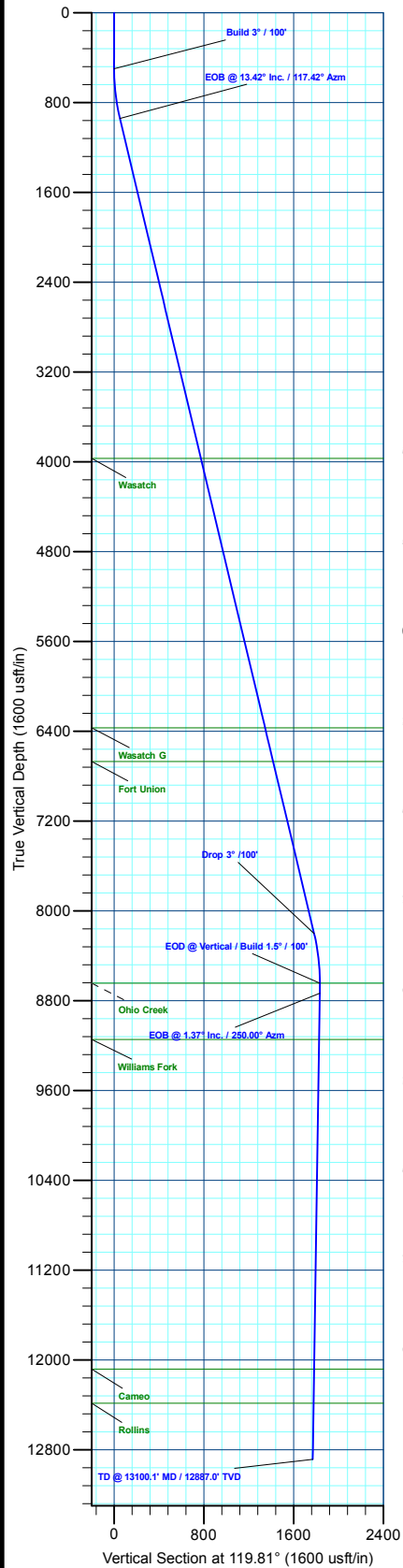
MD	Inc	Azi	TVD	+N/-S	+E/-W	Dleg	TFace	VSeet	Annotation
0.0	0.00	0.00	0.0	0.0	0.0	0.00	0.00	0.0	Build 3° / 100'
500.0	0.00	0.00	500.0	0.0	0.0	0.00	0.00	0.0	EOB @ 13.42° Inc. / 117.42° Azm
947.3	13.42	117.42	943.2	-24.0	46.3	3.00	117.42	52.1	Drop 3° / 100'
8409.6	13.42	117.42	8201.8	-821.6	1583.5	0.00	0.00	1782.4	EOD @ Vertical / Build 1.5° / 100'
8856.9	0.00	0.00	8645.0	-845.6	1629.8	3.00	180.00	1834.5	EOB @ 1.37° Inc. / 250.00° Azm
8947.9	1.37	250.00	8736.0	-845.9	1628.7	1.50	250.00	1833.8	TD @ 13100.1' MD / 12887.0' TVD
13100.1	1.37	250.00	12887.0	-879.8	1535.8	0.00	0.00	1769.9	

DESIGN TARGET DETAILS

Name	TVD	+N/-S	+E/-W	Northing	Easting	Latitude	Longitude
OHCR - 25C-13	8645.0	-845.6	1629.8	14428596.01	2453621.92	39.696375	-108.109291
PBHL - 25C-13	12887.0	-879.8	1535.8	14428558.80	2453529.10	39.696281	-108.109625

WELL DETAILS: ELU O13 FED 25C-13 496

+N/-S	+E/-W	Ground Level : 8118.0	Latitude	Longitude
0.0	0.0	Northing 14429388.70 Easting 2451965.80	39.698696	-108.115081



Plan: Design #3 (ELU O13 FED 25C-13 496/Wellbore #1)

Created By: Will Jircik Date: 15:12, November 15 2022



Caerus Oil & Gas

Rio Blanco County, CO

ELU O13 496 Pad

ELU O13 FED 25C-13 496 - Slot 25C-13

Wellbore #1

Plan: Design #3

KLX Well Planning Report

15 November, 2022



Database:	EDM 5000.1 Single User Db	Local Co-ordinate Reference:	Well ELU O13 FED 25C-13 496 - Slot 25C-13
Company:	Caerus Oil & Gas	TVD Reference:	RKB @ 8143.0usft (25')
Project:	Rio Blanco County, CO	MD Reference:	RKB @ 8143.0usft (25')
Site:	ELU O13 496 Pad	North Reference:	True
Well:	ELU O13 FED 25C-13 496	Survey Calculation Method:	Minimum Curvature
Wellbore:	Wellbore #1		
Design:	Design #3		

Project	Rio Blanco County, CO		
Map System:	Universal Transverse Mercator (US Survey Fee	System Datum:	Mean Sea Level
Geo Datum:	NAD 1927 - Western US		
Map Zone:	Zone 12N (114 W to 108 W)		

Site		ELU O13 496 Pad				
Site Position:		Northing:	14,429,398.00 usft	Latitude:	39.698712	
From:	Map	Easting:	2,452,071.40 usft	Longitude:	-108.114705	
Position Uncertainty:		0.0 usft	Slot Radius:	13-3/16 "	Grid Convergence:	1.84 °

Well	ELU O13 FED 25C-13 496 - Slot 25C-13					
Well Position	+N/-S	-5.9 usft	Northing:	14,429,388.70 usft	Latitude:	39.698696
	+E/-W	-105.8 usft	Easting:	2,451,965.80 usft	Longitude:	-108.115081
Position Uncertainty		0.0 usft	Wellhead Elevation:		Ground Level:	8,118.0 usft

Wellbore	Wellbore #1				
Magnetics	Model Name	Sample Date	Declination (°)	Dip Angle (°)	Field Strength (nT)
	HDGM2020	6/5/2020	9.43	65.82	51,179.80000000

Design	Design #3				
Audit Notes:					
Version:	Phase:	PLAN	Tie On Depth:	0.0	
Vertical Section:	Depth From (TVD) (usft)	+N/-S (usft)	+E/-W (usft)	Direction (°)	
	0.0	0.0	0.0	119.81	

Plan Sections										
Measured Depth (usft)	Inclination (°)	Azimuth (°)	Vertical Depth (usft)	+N/-S (usft)	+E/-W (usft)	Dogleg Rate (°/100usft)	Build Rate (°/100usft)	Turn Rate (°/100usft)	TFO (°)	Target
0.0	0.00	0.00	0.0	0.0	0.0	0.00	0.00	0.00	0.00	
500.0	0.00	0.00	500.0	0.0	0.0	0.00	0.00	0.00	0.00	
947.3	13.42	117.42	943.2	-24.0	46.3	3.00	3.00	0.00	117.42	
8,409.6	13.42	117.42	8,201.8	-821.6	1,583.5	0.00	0.00	0.00	0.00	
8,856.9	0.00	0.00	8,645.0	-845.6	1,629.8	3.00	-3.00	0.00	180.00	OHCR - 25C-13
8,947.9	1.37	250.00	8,736.0	-845.9	1,628.7	1.50	1.50	-120.87	250.00	
13,100.1	1.37	250.00	12,887.0	-879.8	1,535.8	0.00	0.00	0.00	0.00	PBHL - 25C-13

Database:	EDM 5000.1 Single User Db	Local Co-ordinate Reference:	Well ELU O13 FED 25C-13 496 - Slot 25C-13
Company:	Caerus Oil & Gas	TVD Reference:	RKB @ 8143.0usft (25')
Project:	Rio Blanco County, CO	MD Reference:	RKB @ 8143.0usft (25')
Site:	ELU O13 496 Pad	North Reference:	True
Well:	ELU O13 FED 25C-13 496	Survey Calculation Method:	Minimum Curvature
Wellbore:	Wellbore #1		
Design:	Design #3		

Planned Survey									
Measured Depth (usft)	Inclination (°)	Azimuth (°)	Vertical Depth (usft)	+N/-S (usft)	+E/-W (usft)	Vertical Section (usft)	Dogleg Rate (°/100usft)	Build Rate (°/100usft)	Turn Rate (°/100usft)
0.0	0.00	0.00	0.0	0.0	0.0	0.0	0.00	0.00	0.00
100.0	0.00	0.00	100.0	0.0	0.0	0.0	0.00	0.00	0.00
200.0	0.00	0.00	200.0	0.0	0.0	0.0	0.00	0.00	0.00
300.0	0.00	0.00	300.0	0.0	0.0	0.0	0.00	0.00	0.00
400.0	0.00	0.00	400.0	0.0	0.0	0.0	0.00	0.00	0.00
Build 3° / 100'									
500.0	0.00	0.00	500.0	0.0	0.0	0.0	0.00	0.00	0.00
600.0	3.00	117.42	600.0	-1.2	2.3	2.6	3.00	3.00	0.00
700.0	6.00	117.42	699.6	-4.8	9.3	10.5	3.00	3.00	0.00
800.0	9.00	117.42	798.8	-10.8	20.9	23.5	3.00	3.00	0.00
900.0	12.00	117.42	897.1	-19.2	37.0	41.7	3.00	3.00	0.00
EOB @ 13.42° Inc. / 117.42° Azm									
947.3	13.42	117.42	943.2	-24.0	46.3	52.1	3.00	3.00	0.00
1,000.0	13.42	117.42	994.5	-29.6	57.1	64.3	0.00	0.00	0.00
1,100.0	13.42	117.42	1,091.8	-40.3	77.7	87.5	0.00	0.00	0.00
1,200.0	13.42	117.42	1,189.0	-51.0	98.3	110.7	0.00	0.00	0.00
1,300.0	13.42	117.42	1,286.3	-61.7	118.9	133.9	0.00	0.00	0.00
1,400.0	13.42	117.42	1,383.6	-72.4	139.5	157.1	0.00	0.00	0.00
1,500.0	13.42	117.42	1,480.8	-83.1	160.1	180.2	0.00	0.00	0.00
1,600.0	13.42	117.42	1,578.1	-93.8	180.7	203.4	0.00	0.00	0.00
1,700.0	13.42	117.42	1,675.4	-104.5	201.3	226.6	0.00	0.00	0.00
1,800.0	13.42	117.42	1,772.6	-115.1	221.9	249.8	0.00	0.00	0.00
1,900.0	13.42	117.42	1,869.9	-125.8	242.5	273.0	0.00	0.00	0.00
2,000.0	13.42	117.42	1,967.2	-136.5	263.1	296.2	0.00	0.00	0.00
2,100.0	13.42	117.42	2,064.5	-147.2	283.7	319.4	0.00	0.00	0.00
2,200.0	13.42	117.42	2,161.7	-157.9	304.3	342.6	0.00	0.00	0.00
2,300.0	13.42	117.42	2,259.0	-168.6	324.9	365.7	0.00	0.00	0.00
2,400.0	13.42	117.42	2,356.3	-179.3	345.5	388.9	0.00	0.00	0.00
2,500.0	13.42	117.42	2,453.5	-190.0	366.1	412.1	0.00	0.00	0.00
2,600.0	13.42	117.42	2,550.8	-200.6	386.7	435.3	0.00	0.00	0.00
2,700.0	13.42	117.42	2,648.1	-211.3	407.3	458.5	0.00	0.00	0.00
2,800.0	13.42	117.42	2,745.3	-222.0	427.9	481.7	0.00	0.00	0.00
2,900.0	13.42	117.42	2,842.6	-232.7	448.5	504.9	0.00	0.00	0.00
3,000.0	13.42	117.42	2,939.9	-243.4	469.1	528.1	0.00	0.00	0.00
3,100.0	13.42	117.42	3,037.2	-254.1	489.7	551.2	0.00	0.00	0.00
3,200.0	13.42	117.42	3,134.4	-264.8	510.3	574.4	0.00	0.00	0.00
3,300.0	13.42	117.42	3,231.7	-275.5	530.9	597.6	0.00	0.00	0.00
3,400.0	13.42	117.42	3,329.0	-286.1	551.5	620.8	0.00	0.00	0.00
3,500.0	13.42	117.42	3,426.2	-296.8	572.1	644.0	0.00	0.00	0.00
3,600.0	13.42	117.42	3,523.5	-307.5	592.7	667.2	0.00	0.00	0.00
3,700.0	13.42	117.42	3,620.8	-318.2	613.3	690.4	0.00	0.00	0.00
3,800.0	13.42	117.42	3,718.0	-328.9	633.9	713.5	0.00	0.00	0.00
3,900.0	13.42	117.42	3,815.3	-339.6	654.5	736.7	0.00	0.00	0.00
4,000.0	13.42	117.42	3,912.6	-350.3	675.1	759.9	0.00	0.00	0.00
Wasatch									
4,060.1	13.42	117.42	3,971.0	-356.7	687.5	773.8	0.00	0.00	0.00
4,100.0	13.42	117.42	4,009.9	-361.0	695.7	783.1	0.00	0.00	0.00
4,200.0	13.42	117.42	4,107.1	-371.6	716.3	806.3	0.00	0.00	0.00
4,300.0	13.42	117.42	4,204.4	-382.3	736.9	829.5	0.00	0.00	0.00
4,400.0	13.42	117.42	4,301.7	-393.0	757.5	852.7	0.00	0.00	0.00
4,500.0	13.42	117.42	4,398.9	-403.7	778.1	875.9	0.00	0.00	0.00
4,600.0	13.42	117.42	4,496.2	-414.4	798.7	899.0	0.00	0.00	0.00
4,700.0	13.42	117.42	4,593.5	-425.1	819.3	922.2	0.00	0.00	0.00

Database:	EDM 5000.1 Single User Db	Local Co-ordinate Reference:	Well ELU O13 FED 25C-13 496 - Slot 25C-13
Company:	Caerus Oil & Gas	TVD Reference:	RKB @ 8143.0usft (25')
Project:	Rio Blanco County, CO	MD Reference:	RKB @ 8143.0usft (25')
Site:	ELU O13 496 Pad	North Reference:	True
Well:	ELU O13 FED 25C-13 496	Survey Calculation Method:	Minimum Curvature
Wellbore:	Wellbore #1		
Design:	Design #3		

Planned Survey									
Measured Depth (usft)	Inclination (°)	Azimuth (°)	Vertical Depth (usft)	+N/-S (usft)	+E/-W (usft)	Vertical Section (usft)	Dogleg Rate (°/100usft)	Build Rate (°/100usft)	Turn Rate (°/100usft)
4,800.0	13.42	117.42	4,690.7	-435.8	839.9	945.4	0.00	0.00	0.00
4,900.0	13.42	117.42	4,788.0	-446.5	860.5	968.6	0.00	0.00	0.00
5,000.0	13.42	117.42	4,885.3	-457.1	881.1	991.8	0.00	0.00	0.00
5,100.0	13.42	117.42	4,982.5	-467.8	901.7	1,015.0	0.00	0.00	0.00
5,200.0	13.42	117.42	5,079.8	-478.5	922.3	1,038.2	0.00	0.00	0.00
5,300.0	13.42	117.42	5,177.1	-489.2	942.9	1,061.4	0.00	0.00	0.00
5,400.0	13.42	117.42	5,274.4	-499.9	963.5	1,084.5	0.00	0.00	0.00
5,500.0	13.42	117.42	5,371.6	-510.6	984.1	1,107.7	0.00	0.00	0.00
5,600.0	13.42	117.42	5,468.9	-521.3	1,004.7	1,130.9	0.00	0.00	0.00
5,700.0	13.42	117.42	5,566.2	-532.0	1,025.3	1,154.1	0.00	0.00	0.00
5,800.0	13.42	117.42	5,663.4	-542.7	1,045.9	1,177.3	0.00	0.00	0.00
5,900.0	13.42	117.42	5,760.7	-553.3	1,066.5	1,200.5	0.00	0.00	0.00
6,000.0	13.42	117.42	5,858.0	-564.0	1,087.1	1,223.7	0.00	0.00	0.00
6,100.0	13.42	117.42	5,955.2	-574.7	1,107.7	1,246.8	0.00	0.00	0.00
6,200.0	13.42	117.42	6,052.5	-585.4	1,128.3	1,270.0	0.00	0.00	0.00
6,300.0	13.42	117.42	6,149.8	-596.1	1,148.9	1,293.2	0.00	0.00	0.00
6,400.0	13.42	117.42	6,247.1	-606.8	1,169.5	1,316.4	0.00	0.00	0.00
6,500.0	13.42	117.42	6,344.3	-617.5	1,190.1	1,339.6	0.00	0.00	0.00
Wasatch G									
6,527.4	13.42	117.42	6,371.0	-620.4	1,195.8	1,346.0	0.00	0.00	0.00
6,600.0	13.42	117.42	6,441.6	-628.2	1,210.7	1,362.8	0.00	0.00	0.00
6,700.0	13.42	117.42	6,538.9	-638.8	1,231.3	1,386.0	0.00	0.00	0.00
6,800.0	13.42	117.42	6,636.1	-649.5	1,251.9	1,409.2	0.00	0.00	0.00
Fort Union									
6,835.8	13.42	117.42	6,671.0	-653.4	1,259.3	1,417.5	0.00	0.00	0.00
6,900.0	13.42	117.42	6,733.4	-660.2	1,272.5	1,432.3	0.00	0.00	0.00
7,000.0	13.42	117.42	6,830.7	-670.9	1,293.1	1,455.5	0.00	0.00	0.00
7,100.0	13.42	117.42	6,927.9	-681.6	1,313.7	1,478.7	0.00	0.00	0.00
7,200.0	13.42	117.42	7,025.2	-692.3	1,334.3	1,501.9	0.00	0.00	0.00
7,300.0	13.42	117.42	7,122.5	-703.0	1,354.9	1,525.1	0.00	0.00	0.00
7,400.0	13.42	117.42	7,219.8	-713.7	1,375.5	1,548.3	0.00	0.00	0.00
7,500.0	13.42	117.42	7,317.0	-724.3	1,396.1	1,571.5	0.00	0.00	0.00
7,600.0	13.42	117.42	7,414.3	-735.0	1,416.7	1,594.7	0.00	0.00	0.00
7,700.0	13.42	117.42	7,511.6	-745.7	1,437.3	1,617.8	0.00	0.00	0.00
7,800.0	13.42	117.42	7,608.8	-756.4	1,457.9	1,641.0	0.00	0.00	0.00
7,900.0	13.42	117.42	7,706.1	-767.1	1,478.5	1,664.2	0.00	0.00	0.00
8,000.0	13.42	117.42	7,803.4	-777.8	1,499.1	1,687.4	0.00	0.00	0.00
8,100.0	13.42	117.42	7,900.6	-788.5	1,519.7	1,710.6	0.00	0.00	0.00
8,200.0	13.42	117.42	7,997.9	-799.2	1,540.3	1,733.8	0.00	0.00	0.00
8,300.0	13.42	117.42	8,095.2	-809.8	1,560.9	1,757.0	0.00	0.00	0.00
Drop 3° /100'									
8,409.6	13.42	117.42	8,201.8	-821.6	1,583.5	1,782.4	0.00	0.00	0.00
8,500.0	10.71	117.42	8,290.2	-830.3	1,600.2	1,801.2	3.00	-3.00	0.00
8,600.0	7.71	117.42	8,388.9	-837.6	1,614.4	1,817.2	3.00	-3.00	0.00
8,700.0	4.71	117.42	8,488.3	-842.6	1,624.0	1,828.0	3.00	-3.00	0.00
8,800.0	1.71	117.42	8,588.1	-845.2	1,629.0	1,833.6	3.00	-3.00	0.00
EOD @ Vertical / Build 1.5° / 100' - Ohio Creek									
8,856.9	0.00	0.00	8,645.0	-845.6	1,629.8	1,834.5	3.00	-3.00	0.00
8,900.0	0.65	250.00	8,688.1	-845.6	1,629.5	1,834.3	1.50	1.50	0.00
EOB @ 1.37° Inc. / 250.00° Azm									
8,947.9	1.37	250.00	8,736.0	-845.9	1,628.7	1,833.8	1.50	1.50	0.00
9,000.0	1.37	250.00	8,788.1	-846.4	1,627.6	1,833.0	0.00	0.00	0.00
9,100.0	1.37	250.00	8,888.1	-847.2	1,625.3	1,831.4	0.00	0.00	0.00
9,200.0	1.37	250.00	8,988.0	-848.0	1,623.1	1,829.9	0.00	0.00	0.00

Database:	EDM 5000.1 Single User Db	Local Co-ordinate Reference:	Well ELU O13 FED 25C-13 496 - Slot 25C-13
Company:	Caerus Oil & Gas	TVD Reference:	RKB @ 8143.0usft (25')
Project:	Rio Blanco County, CO	MD Reference:	RKB @ 8143.0usft (25')
Site:	ELU O13 496 Pad	North Reference:	True
Well:	ELU O13 FED 25C-13 496	Survey Calculation Method:	Minimum Curvature
Wellbore:	Wellbore #1		
Design:	Design #3		

Planned Survey									
Measured Depth (usft)	Inclination (°)	Azimuth (°)	Vertical Depth (usft)	+N/-S (usft)	+E/-W (usft)	Vertical Section (usft)	Dogleg Rate (°/100usft)	Build Rate (°/100usft)	Turn Rate (°/100usft)
9,300.0	1.37	250.00	9,088.0	-848.8	1,620.9	1,828.4	0.00	0.00	0.00
Williams Fork									
9,359.0	1.37	250.00	9,147.0	-849.3	1,619.5	1,827.4	0.00	0.00	0.00
9,400.0	1.37	250.00	9,188.0	-849.6	1,618.6	1,826.8	0.00	0.00	0.00
9,500.0	1.37	250.00	9,288.0	-850.4	1,616.4	1,825.3	0.00	0.00	0.00
9,600.0	1.37	250.00	9,387.9	-851.2	1,614.1	1,823.7	0.00	0.00	0.00
9,700.0	1.37	250.00	9,487.9	-852.1	1,611.9	1,822.2	0.00	0.00	0.00
9,800.0	1.37	250.00	9,587.9	-852.9	1,609.7	1,820.7	0.00	0.00	0.00
9,900.0	1.37	250.00	9,687.8	-853.7	1,607.4	1,819.1	0.00	0.00	0.00
10,000.0	1.37	250.00	9,787.8	-854.5	1,605.2	1,817.6	0.00	0.00	0.00
10,100.0	1.37	250.00	9,887.8	-855.3	1,602.9	1,816.1	0.00	0.00	0.00
10,200.0	1.37	250.00	9,987.8	-856.1	1,600.7	1,814.5	0.00	0.00	0.00
10,300.0	1.37	250.00	10,087.7	-857.0	1,598.5	1,813.0	0.00	0.00	0.00
10,400.0	1.37	250.00	10,187.7	-857.8	1,596.2	1,811.4	0.00	0.00	0.00
10,500.0	1.37	250.00	10,287.7	-858.6	1,594.0	1,809.9	0.00	0.00	0.00
10,600.0	1.37	250.00	10,387.6	-859.4	1,591.8	1,808.4	0.00	0.00	0.00
10,700.0	1.37	250.00	10,487.6	-860.2	1,589.5	1,806.8	0.00	0.00	0.00
10,800.0	1.37	250.00	10,587.6	-861.0	1,587.3	1,805.3	0.00	0.00	0.00
10,900.0	1.37	250.00	10,687.6	-861.8	1,585.0	1,803.8	0.00	0.00	0.00
11,000.0	1.37	250.00	10,787.5	-862.7	1,582.8	1,802.2	0.00	0.00	0.00
11,100.0	1.37	250.00	10,887.5	-863.5	1,580.6	1,800.7	0.00	0.00	0.00
11,200.0	1.37	250.00	10,987.5	-864.3	1,578.3	1,799.1	0.00	0.00	0.00
11,300.0	1.37	250.00	11,087.4	-865.1	1,576.1	1,797.6	0.00	0.00	0.00
11,400.0	1.37	250.00	11,187.4	-865.9	1,573.8	1,796.1	0.00	0.00	0.00
11,500.0	1.37	250.00	11,287.4	-866.7	1,571.6	1,794.5	0.00	0.00	0.00
11,600.0	1.37	250.00	11,387.4	-867.5	1,569.4	1,793.0	0.00	0.00	0.00
11,700.0	1.37	250.00	11,487.3	-868.4	1,567.1	1,791.5	0.00	0.00	0.00
11,800.0	1.37	250.00	11,587.3	-869.2	1,564.9	1,789.9	0.00	0.00	0.00
11,900.0	1.37	250.00	11,687.3	-870.0	1,562.7	1,788.4	0.00	0.00	0.00
12,000.0	1.37	250.00	11,787.2	-870.8	1,560.4	1,786.8	0.00	0.00	0.00
12,100.0	1.37	250.00	11,887.2	-871.6	1,558.2	1,785.3	0.00	0.00	0.00
12,200.0	1.37	250.00	11,987.2	-872.4	1,555.9	1,783.8	0.00	0.00	0.00
Cameo									
12,294.8	1.37	250.00	12,082.0	-873.2	1,553.8	1,782.3	0.00	0.00	0.00
12,300.0	1.37	250.00	12,087.2	-873.2	1,553.7	1,782.2	0.00	0.00	0.00
12,400.0	1.37	250.00	12,187.1	-874.1	1,551.5	1,780.7	0.00	0.00	0.00
12,500.0	1.37	250.00	12,287.1	-874.9	1,549.2	1,779.2	0.00	0.00	0.00
Rollins									
12,599.9	1.37	250.00	12,387.0	-875.7	1,547.0	1,777.6	0.00	0.00	0.00
12,600.0	1.37	250.00	12,387.1	-875.7	1,547.0	1,777.6	0.00	0.00	0.00
12,700.0	1.37	250.00	12,487.0	-876.5	1,544.7	1,776.1	0.00	0.00	0.00
12,800.0	1.37	250.00	12,587.0	-877.3	1,542.5	1,774.5	0.00	0.00	0.00
12,900.0	1.37	250.00	12,687.0	-878.1	1,540.3	1,773.0	0.00	0.00	0.00
13,000.0	1.37	250.00	12,787.0	-879.0	1,538.0	1,771.5	0.00	0.00	0.00
TD @ 13100.1' MD / 12887.0' TVD									
13,100.1	1.37	250.00	12,887.0	-879.8	1,535.8	1,769.9	0.00	0.00	0.00

Database:	EDM 5000.1 Single User Db	Local Co-ordinate Reference:	Well ELU O13 FED 25C-13 496 - Slot 25C-13
Company:	Caerus Oil & Gas	TVD Reference:	RKB @ 8143.0usft (25')
Project:	Rio Blanco County, CO	MD Reference:	RKB @ 8143.0usft (25')
Site:	ELU O13 496 Pad	North Reference:	True
Well:	ELU O13 FED 25C-13 496	Survey Calculation Method:	Minimum Curvature
Wellbore:	Wellbore #1		
Design:	Design #3		

Design Targets

Target Name

- hit/miss target	Dip Angle (°)	Dip Dir. (°)	TVD (usft)	+N/-S (usft)	+E/-W (usft)	Northing (usft)	Easting (usft)	Latitude	Longitude
- Shape									
OHCR - 25C-13	0.00	0.00	8,645.0	-845.6	1,629.8	14,428,596.01	2,453,621.92	39.696375	-108.109292
- plan hits target center									
- Point									
PBHL - 25C-13	0.00	0.00	12,887.0	-879.8	1,535.8	14,428,558.80	2,453,529.10	39.696281	-108.109625
- plan hits target center									
- Ellipse (radii L100.0 W50.0 on 250.00 azi)									

Formations

Measured Depth (usft)	Vertical Depth (usft)	Name	Lithology	Dip (°)	Dip Direction (°)
4,060.1	3,971.0	Wasatch			
6,527.4	6,371.0	Wasatch G			
6,835.8	6,671.0	Fort Union			
8,856.9	8,645.0	Ohio Creek			
9,359.0	9,147.0	Williams Fork			
12,294.8	12,082.0	Cameo			
12,599.9	12,387.0	Rollins			

Plan Annotations

Measured Depth (usft)	Vertical Depth (usft)	Local Coordinates		Comment
		+N/-S (usft)	+E/-W (usft)	
500.0	500.0	0.0	0.0	Build 3° / 100'
947.3	943.2	-24.0	46.3	EOB @ 13.42° Inc. / 117.42° Azm
8,409.6	8,201.8	-821.6	1,583.5	Drop 3° / 100'
8,856.9	8,645.0	-845.6	1,629.8	EOD @ Vertical / Build 1.5° / 100'
8,947.9	8,736.0	-845.9	1,628.7	EOB @ 1.37° Inc. / 250.00° Azm
13,100.1	12,887.0	-879.8	1,535.8	TD @ 13100.1' MD / 12887.0' TVD