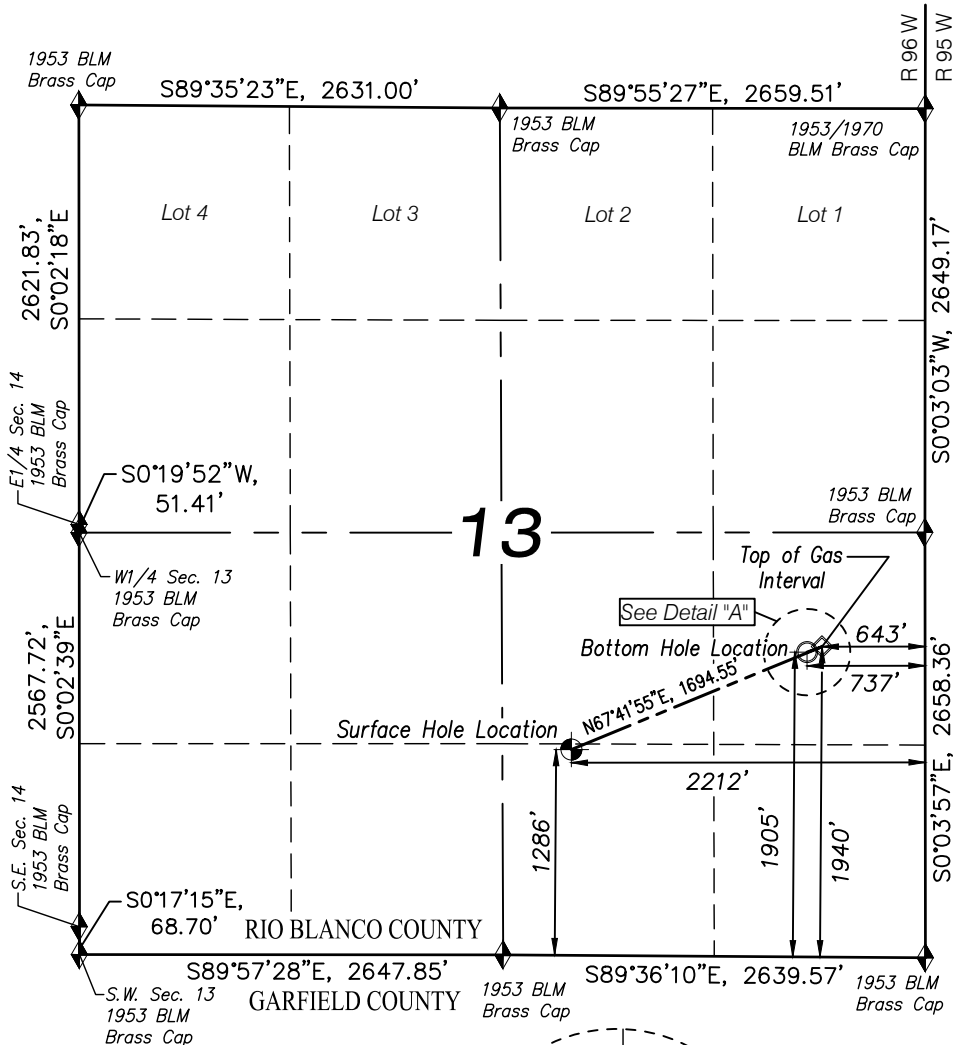


T4S, R96W, 6TH P.M.



ELU O13 FED 24A-13 496 WELL

UNGRADED GROUND
ELEVATION = 8118.4'

NAD 83 (SURFACE LOCATION)

LAT: 39° 41' 55.25"N (39.698679 N)
LONG: 108° 06' 55.89"W (108.115524 W)

NAD27 (SURFACE LOCATION)

LAT: 39° 41' 55.33"N (39.698704 N)
LONG: 108° 06' 53.60"W (108.114889 W)

UTM NAD 27 (ZONE 12) US Feet

N: 14429393.40
E: 2452019.50

NAD 83 (BOTTOM HOLE LOCATION)

LAT: 39° 42' 01.27"N (39.700352 N)
LONG: 108° 06' 37.04"W (108.110290 W)

NAD27 (BOTTOM HOLE LOCATION)

LAT: 39° 42' 01.36"N (39.700377 N)
LONG: 108° 06' 34.76"W (108.109655 W)

UTM NAD 27 (ZONE 12) US Feet

N: 14430050.20
E: 2453472.60

NAD 83 (TOP OF GAS INTERVAL)

LAT: 39° 42' 01.61"N (39.700446 N)
LONG: 108° 06' 35.84"W (108.109956 W)

NAD27 (TOP OF GAS INTERVAL)

LAT: 39° 42' 01.69"N (39.700471 N)
LONG: 108° 06' 33.56"W (108.109321 W)

UTM NAD 27 (ZONE 12) US Feet

N: 14430087.41
E: 2453565.42

CERTIFICATE OF SURVEYOR

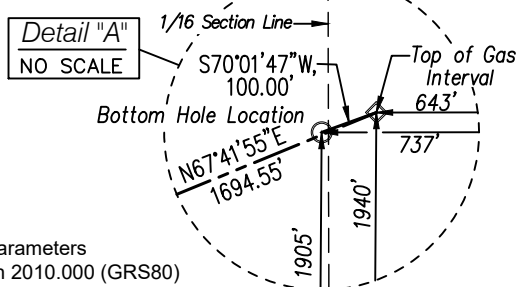
This is to certify that the this plat was prepared from field notes taken during an actual survey made by me or under my supervision and that the location has been staked on the ground as shown on the plat and that the same are true and correct to the best of my knowledge and belief.



Ted T. Taggart, Registered Land Surveyor
Registration No. 37075, State of Colorado

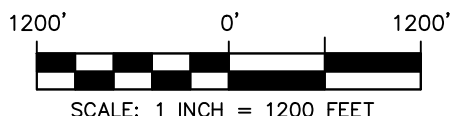
NOTES:

- Survey Datum:
Low Distortion Projection Parameters
Datum NAD83(2011) Epoch 2010.000 (GRS80)
Projection Type = Transverse Mercator
Origin Latitude = 39°40'00" North
Origin Longitude = 108°04'00" West
Scale Reduction = 1.000 377 882 Unitless
Units = U.S. Survey Foot (USSF)
GEOID12a NAVD88 (Basis of Elevation)
- Well footages are measured at right angles to section lines.
- PDOP Reading: 1.5 Operator: B. Taggart (Rule No. 215)
- Improvements: See Location Drawing (Figure #6) for all visible improvements within 2000 ft. of the working pad surface.



LEGEND

- ◆ SECTION CORNER LOCATED
- SURFACE HOLE LOCATION
- BOTTOM HOLE LOCATION
- ◇ TOP OF GAS INTERVAL



WASATCH SURVEYING ASSOCIATES
906 MAIN STREET, EVANSTON, WY 82930
(307) 789-4545



CAERUS OIL & GAS LLC

ELU O13 FED 24A-13 496 WELL
SW1/4 SE1/4, SECTION 13, T4S, R96W, 6TH P.M.
RIO BLANCO COUNTY, COLORADO

WELL LOCATION PLAT

SURVEYED BY: JT/BT	DATE: 5/06/22	
DRAWN BY: SGT	DATE: 11/21/22	PROJECT NO: 20-13-05