

Project: Rio Blanco County, CO
 Site: ELU O13 496 Pad
 Well: ELU O13 FED 22A-24 496
 Wellbore: Wellbore #1
 Design: Design #3
 Latitude: 39.698688
 Longitude: -108.115272
 Ground Level: 8118.0
 RKB @ 8143.0usft (25')

PROJECT DETAILS: Rio Blanco County, CO
 Geodetic System: Universal Transverse Mercator (US Survey Feet)
 Datum: NAD 1927 - Western US
 Ellipsoid: Clarke 1886
 Zone: Zone 12N (114 W to 108 W)
 System Datum: Mean Sea Level

REFERENCE INFORMATION
 Vertical (TVD) Reference: RKB @ 8143.0usft (25')
 Section (VS) Reference: Slot - 22A-24(0.0N, 0.0E)
 Measured Depth Reference: RKB @ 8143.0usft (25')
 Calculation Method: Minimum Curvature

FORMATION TOP DETAILS

TVDPath	MDPath	Formation
3888.0	4140.1	Wasatch
6288.0	6750.6	Wasatch G
6588.0	7076.9	Fort Union
8538.0	9152.9	Ohio Creek
9047.0	9662.0	Williams Fork
11950.0	12565.8	Cameo
12363.0	12978.9	Rollins

SECTION DETAILS

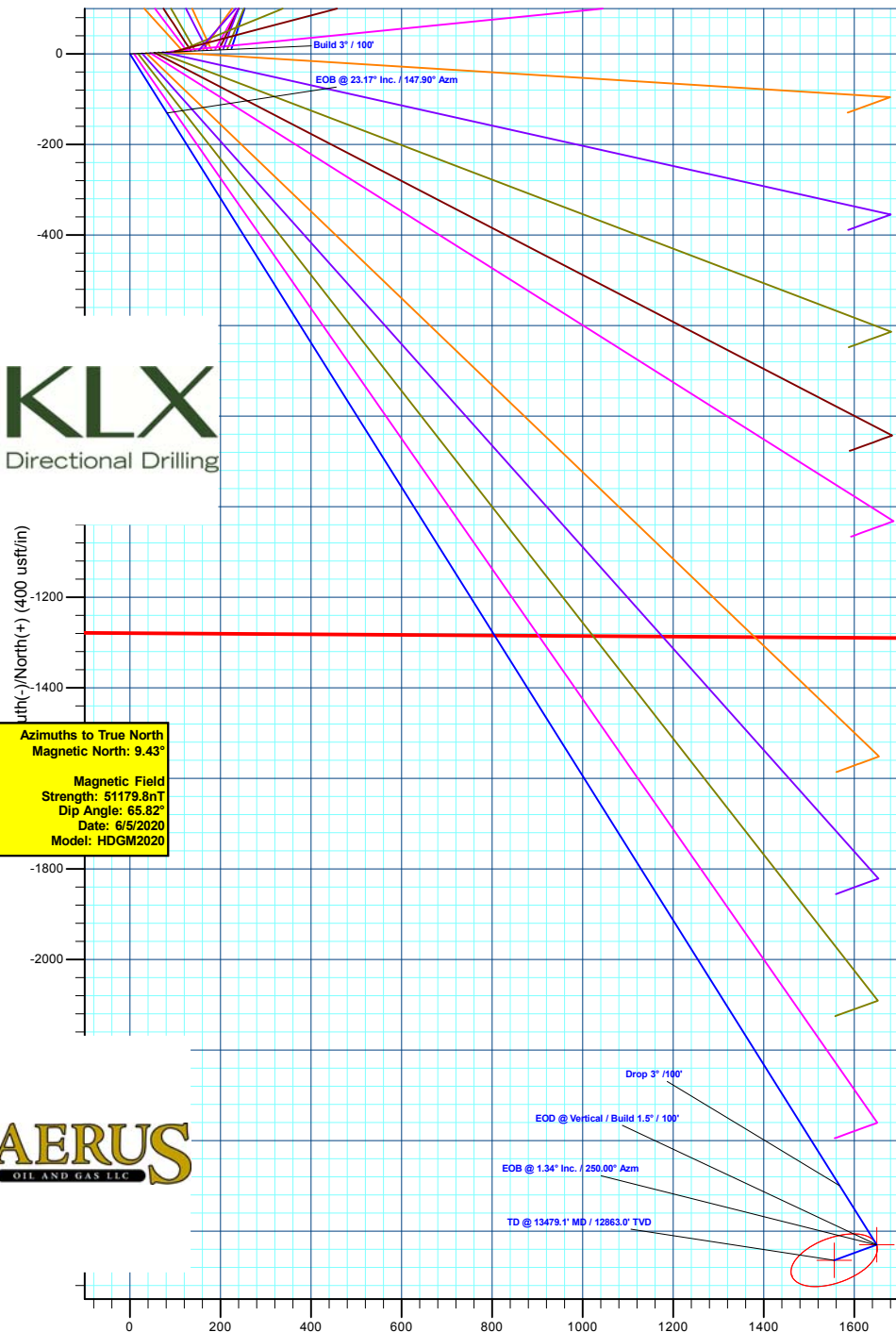
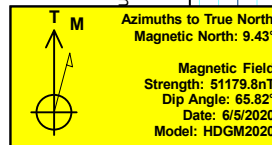
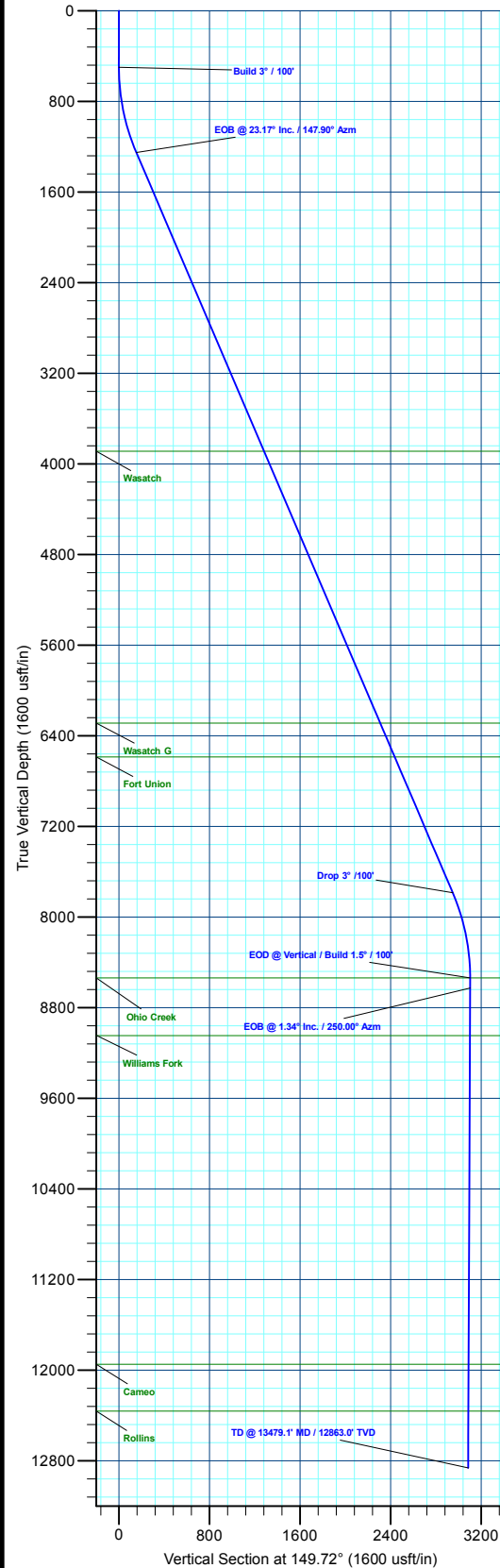
MD	Inc	Azi	TVD	+N/-S	+E/-W	Dieg	TFace	VSect	Annotation
0.0	0.00	0.00	0.0	0.0	0.0	0.00	0.00	0.0	
500.0	0.00	0.00	500.0	0.0	0.0	0.00	0.00	0.0	Build 3" / 100'
1272.2	23.17	147.90	1251.3	-130.5	81.8	3.00	147.90	153.9	EOB @ 23.17° Inc. / 147.90° Azm
8380.7	23.17	147.90	7786.7	-2499.4	1567.9	0.00	0.00	2949.0	Drop 3" / 100'
9152.9	0.00	0.00	8538.0	-2629.8	1649.8	3.00	180.00	3102.9	EOD @ Vertical / Build 1.5" / 100'
9242.1	1.34	250.00	8627.2	-2630.2	1648.8	1.50	250.00	3102.7	EOB @ 1.34° Inc. / 250.00° Azm
13479.1	1.34	250.00	12863.0	-2664.0	1555.8	0.00	0.00	3085.1	TD @ 13479.1' MD / 12863.0' TVD

DESIGN TARGET DETAILS

Name	TVD	+N/-S	+E/-W	Northing	Easting	Latitude	Longitude
OHCR - 22A-24	8538.0	-2629.8	1649.8	14426808.61	2453645.52	39.691470	-108.109412
PBHL - 22A-24	12863.0	-2664.0	1555.8	14426771.40	2453552.70	39.691376	-108.109746

WELL DETAILS: ELU O13 FED 22A-24 496

+N/-S	+E/-W	Ground Level : 8118.0	Latitude	Longitude
0.0	0.0	Northing 14429384.00 Easting 2451912.00	39.698688	-108.115272



Plan: Design #3 (ELU O13 FED 22A-24 496/Wellbore #1)

Created By: Will Jircik Date: 14:02, November 15 2022



Caerus Oil & Gas

Rio Blanco County, CO

ELU O13 496 Pad

ELU O13 FED 22A-24 496 - Slot 22A-24

Wellbore #1

Plan: Design #3

KLX Well Planning Report

15 November, 2022



Database:	EDM 5000.1 Single User Db	Local Co-ordinate Reference:	Well ELU O13 FED 22A-24 496 - Slot 22A-24
Company:	Caerus Oil & Gas	TVD Reference:	RKB @ 8143.0usft (25')
Project:	Rio Blanco County, CO	MD Reference:	RKB @ 8143.0usft (25')
Site:	ELU O13 496 Pad	North Reference:	True
Well:	ELU O13 FED 22A-24 496	Survey Calculation Method:	Minimum Curvature
Wellbore:	Wellbore #1		
Design:	Design #3		

Project	Rio Blanco County, CO		
Map System:	Universal Transverse Mercator (US Survey Fee	System Datum:	Mean Sea Level
Geo Datum:	NAD 1927 - Western US		
Map Zone:	Zone 12N (114 W to 108 W)		

Site	ELU O13 496 Pad		
Site Position:		Northing:	14,429,398.00 usft
From:	Map	Easting:	2,452,071.40 usft
Position Uncertainty:	0.0 usft	Slot Radius:	13-3/16 "
		Latitude:	39.698712
		Longitude:	-108.114705
		Grid Convergence:	1.84 °

Well	ELU O13 FED 22A-24 496 - Slot 22A-24		
Well Position	+N/-S	-8.9 usft	Northing: 14,429,384.00 usft
	+E/-W	-159.8 usft	Easting: 2,451,912.00 usft
Position Uncertainty	0.0 usft	Wellhead Elevation:	Latitude: 39.698688
			Longitude: -108.115273
			Ground Level: 8,118.0 usft

Wellbore	Wellbore #1				
Magnetics	Model Name	Sample Date	Declination (°)	Dip Angle (°)	Field Strength (nT)
	HDGM2020	6/5/2020	9.43	65.82	51,179.80000000

Design	Design #3			
Audit Notes:				
Version:	Phase:	PLAN	Tie On Depth:	0.0
Vertical Section:	Depth From (TVD) (usft)	+N/-S (usft)	+E/-W (usft)	Direction (°)
	0.0	0.0	0.0	149.72

Plan Sections										
Measured Depth (usft)	Inclination (°)	Azimuth (°)	Vertical Depth (usft)	+N/-S (usft)	+E/-W (usft)	Dogleg Rate (°/100usft)	Build Rate (°/100usft)	Turn Rate (°/100usft)	TFO (°)	Target
0.0	0.00	0.00	0.0	0.0	0.0	0.00	0.00	0.00	0.00	
500.0	0.00	0.00	500.0	0.0	0.0	0.00	0.00	0.00	0.00	
1,272.2	23.17	147.90	1,251.3	-130.5	81.8	3.00	3.00	0.00	147.90	
8,380.7	23.17	147.90	7,786.7	-2,499.4	1,567.9	0.00	0.00	0.00	0.00	
9,152.9	0.00	0.00	8,538.0	-2,629.8	1,649.8	3.00	-3.00	0.00	180.00	OHCR - 22A-24
9,242.1	1.34	250.00	8,627.2	-2,630.2	1,648.8	1.50	1.50	-123.29	250.00	
13,479.1	1.34	250.00	12,863.0	-2,664.0	1,555.8	0.00	0.00	0.00	0.00	PBHL - 22A-24

Database:	EDM 5000.1 Single User Db	Local Co-ordinate Reference:	Well ELU O13 FED 22A-24 496 - Slot 22A-24
Company:	Caerus Oil & Gas	TVD Reference:	RKB @ 8143.0usft (25')
Project:	Rio Blanco County, CO	MD Reference:	RKB @ 8143.0usft (25')
Site:	ELU O13 496 Pad	North Reference:	True
Well:	ELU O13 FED 22A-24 496	Survey Calculation Method:	Minimum Curvature
Wellbore:	Wellbore #1		
Design:	Design #3		

Planned Survey									
Measured Depth (usft)	Inclination (°)	Azimuth (°)	Vertical Depth (usft)	+N/-S (usft)	+E/-W (usft)	Vertical Section (usft)	Dogleg Rate (°/100usft)	Build Rate (°/100usft)	Turn Rate (°/100usft)
0.0	0.00	0.00	0.0	0.0	0.0	0.0	0.00	0.00	0.00
100.0	0.00	0.00	100.0	0.0	0.0	0.0	0.00	0.00	0.00
200.0	0.00	0.00	200.0	0.0	0.0	0.0	0.00	0.00	0.00
300.0	0.00	0.00	300.0	0.0	0.0	0.0	0.00	0.00	0.00
400.0	0.00	0.00	400.0	0.0	0.0	0.0	0.00	0.00	0.00
Build 3° / 100'									
500.0	0.00	0.00	500.0	0.0	0.0	0.0	0.00	0.00	0.00
600.0	3.00	147.90	600.0	-2.2	1.4	2.6	3.00	3.00	0.00
700.0	6.00	147.90	699.6	-8.9	5.6	10.5	3.00	3.00	0.00
800.0	9.00	147.90	798.8	-19.9	12.5	23.5	3.00	3.00	0.00
900.0	12.00	147.90	897.1	-35.4	22.2	41.7	3.00	3.00	0.00
1,000.0	15.00	147.90	994.3	-55.1	34.6	65.0	3.00	3.00	0.00
1,100.0	18.00	147.90	1,090.2	-79.2	49.7	93.4	3.00	3.00	0.00
1,200.0	21.00	147.90	1,184.4	-107.5	67.4	126.8	3.00	3.00	0.00
EOB @ 23.17° Inc. / 147.90° Azm									
1,272.2	23.17	147.90	1,251.3	-130.5	81.8	153.9	3.00	3.00	0.00
1,300.0	23.17	147.90	1,276.9	-139.7	87.6	164.8	0.00	0.00	0.00
1,400.0	23.17	147.90	1,368.8	-173.0	108.6	204.2	0.00	0.00	0.00
1,500.0	23.17	147.90	1,460.8	-206.4	129.5	243.5	0.00	0.00	0.00
1,600.0	23.17	147.90	1,552.7	-239.7	150.4	282.8	0.00	0.00	0.00
1,700.0	23.17	147.90	1,644.6	-273.0	171.3	322.1	0.00	0.00	0.00
1,800.0	23.17	147.90	1,736.6	-306.3	192.2	361.4	0.00	0.00	0.00
1,900.0	23.17	147.90	1,828.5	-339.7	213.1	400.8	0.00	0.00	0.00
2,000.0	23.17	147.90	1,920.4	-373.0	234.0	440.1	0.00	0.00	0.00
2,100.0	23.17	147.90	2,012.4	-406.3	254.9	479.4	0.00	0.00	0.00
2,200.0	23.17	147.90	2,104.3	-439.6	275.8	518.7	0.00	0.00	0.00
2,300.0	23.17	147.90	2,196.3	-473.0	296.7	558.0	0.00	0.00	0.00
2,400.0	23.17	147.90	2,288.2	-506.3	317.6	597.4	0.00	0.00	0.00
2,500.0	23.17	147.90	2,380.1	-539.6	338.5	636.7	0.00	0.00	0.00
2,600.0	23.17	147.90	2,472.1	-572.9	359.4	676.0	0.00	0.00	0.00
2,700.0	23.17	147.90	2,564.0	-606.3	380.3	715.3	0.00	0.00	0.00
2,800.0	23.17	147.90	2,655.9	-639.6	401.2	754.6	0.00	0.00	0.00
2,900.0	23.17	147.90	2,747.9	-672.9	422.1	794.0	0.00	0.00	0.00
3,000.0	23.17	147.90	2,839.8	-706.2	443.0	833.3	0.00	0.00	0.00
3,100.0	23.17	147.90	2,931.8	-739.6	464.0	872.6	0.00	0.00	0.00
3,200.0	23.17	147.90	3,023.7	-772.9	484.9	911.9	0.00	0.00	0.00
3,300.0	23.17	147.90	3,115.6	-806.2	505.8	951.3	0.00	0.00	0.00
3,400.0	23.17	147.90	3,207.6	-839.5	526.7	990.6	0.00	0.00	0.00
3,500.0	23.17	147.90	3,299.5	-872.9	547.6	1,029.9	0.00	0.00	0.00
3,600.0	23.17	147.90	3,391.4	-906.2	568.5	1,069.2	0.00	0.00	0.00
3,700.0	23.17	147.90	3,483.4	-939.5	589.4	1,108.5	0.00	0.00	0.00
3,800.0	23.17	147.90	3,575.3	-972.8	610.3	1,147.9	0.00	0.00	0.00
3,900.0	23.17	147.90	3,667.2	-1,006.2	631.2	1,187.2	0.00	0.00	0.00
4,000.0	23.17	147.90	3,759.2	-1,039.5	652.1	1,226.5	0.00	0.00	0.00
4,100.0	23.17	147.90	3,851.1	-1,072.8	673.0	1,265.8	0.00	0.00	0.00
Wasatch									
4,140.1	23.17	147.90	3,888.0	-1,086.2	681.4	1,281.6	0.00	0.00	0.00
4,200.0	23.17	147.90	3,943.1	-1,106.1	693.9	1,305.1	0.00	0.00	0.00
4,300.0	23.17	147.90	4,035.0	-1,139.5	714.8	1,344.5	0.00	0.00	0.00
4,400.0	23.17	147.90	4,126.9	-1,172.8	735.7	1,383.8	0.00	0.00	0.00
4,500.0	23.17	147.90	4,218.9	-1,206.1	756.6	1,423.1	0.00	0.00	0.00
4,600.0	23.17	147.90	4,310.8	-1,239.4	777.5	1,462.4	0.00	0.00	0.00
4,700.0	23.17	147.90	4,402.7	-1,272.8	798.4	1,501.7	0.00	0.00	0.00

Database:	EDM 5000.1 Single User Db	Local Co-ordinate Reference:	Well ELU O13 FED 22A-24 496 - Slot 22A-24
Company:	Caerus Oil & Gas	TVD Reference:	RKB @ 8143.0usft (25')
Project:	Rio Blanco County, CO	MD Reference:	RKB @ 8143.0usft (25')
Site:	ELU O13 496 Pad	North Reference:	True
Well:	ELU O13 FED 22A-24 496	Survey Calculation Method:	Minimum Curvature
Wellbore:	Wellbore #1		
Design:	Design #3		

Planned Survey									
Measured Depth (usft)	Inclination (°)	Azimuth (°)	Vertical Depth (usft)	+N/-S (usft)	+E/-W (usft)	Vertical Section (usft)	Dogleg Rate (°/100usft)	Build Rate (°/100usft)	Turn Rate (°/100usft)
4,800.0	23.17	147.90	4,494.7	-1,306.1	819.4	1,541.1	0.00	0.00	0.00
4,900.0	23.17	147.90	4,586.6	-1,339.4	840.3	1,580.4	0.00	0.00	0.00
5,000.0	23.17	147.90	4,678.6	-1,372.7	861.2	1,619.7	0.00	0.00	0.00
5,100.0	23.17	147.90	4,770.5	-1,406.1	882.1	1,659.0	0.00	0.00	0.00
5,200.0	23.17	147.90	4,862.4	-1,439.4	903.0	1,698.3	0.00	0.00	0.00
5,300.0	23.17	147.90	4,954.4	-1,472.7	923.9	1,737.7	0.00	0.00	0.00
5,400.0	23.17	147.90	5,046.3	-1,506.0	944.8	1,777.0	0.00	0.00	0.00
5,500.0	23.17	147.90	5,138.2	-1,539.4	965.7	1,816.3	0.00	0.00	0.00
5,600.0	23.17	147.90	5,230.2	-1,572.7	986.6	1,855.6	0.00	0.00	0.00
5,700.0	23.17	147.90	5,322.1	-1,606.0	1,007.5	1,894.9	0.00	0.00	0.00
5,800.0	23.17	147.90	5,414.0	-1,639.4	1,028.4	1,934.3	0.00	0.00	0.00
5,900.0	23.17	147.90	5,506.0	-1,672.7	1,049.3	1,973.6	0.00	0.00	0.00
6,000.0	23.17	147.90	5,597.9	-1,706.0	1,070.2	2,012.9	0.00	0.00	0.00
6,100.0	23.17	147.90	5,689.9	-1,739.3	1,091.1	2,052.2	0.00	0.00	0.00
6,200.0	23.17	147.90	5,781.8	-1,772.7	1,112.0	2,091.5	0.00	0.00	0.00
6,300.0	23.17	147.90	5,873.7	-1,806.0	1,132.9	2,130.9	0.00	0.00	0.00
6,400.0	23.17	147.90	5,965.7	-1,839.3	1,153.8	2,170.2	0.00	0.00	0.00
6,500.0	23.17	147.90	6,057.6	-1,872.6	1,174.8	2,209.5	0.00	0.00	0.00
6,600.0	23.17	147.90	6,149.5	-1,906.0	1,195.7	2,248.8	0.00	0.00	0.00
6,700.0	23.17	147.90	6,241.5	-1,939.3	1,216.6	2,288.1	0.00	0.00	0.00
Wasatch G									
6,750.6	23.17	147.90	6,288.0	-1,956.1	1,227.1	2,308.0	0.00	0.00	0.00
6,800.0	23.17	147.90	6,333.4	-1,972.6	1,237.5	2,327.5	0.00	0.00	0.00
6,900.0	23.17	147.90	6,425.4	-2,005.9	1,258.4	2,366.8	0.00	0.00	0.00
7,000.0	23.17	147.90	6,517.3	-2,039.3	1,279.3	2,406.1	0.00	0.00	0.00
Fort Union									
7,076.9	23.17	147.90	6,588.0	-2,064.9	1,295.4	2,436.3	0.00	0.00	0.00
7,100.0	23.17	147.90	6,609.2	-2,072.6	1,300.2	2,445.4	0.00	0.00	0.00
7,200.0	23.17	147.90	6,701.2	-2,105.9	1,321.1	2,484.7	0.00	0.00	0.00
7,300.0	23.17	147.90	6,793.1	-2,139.2	1,342.0	2,524.1	0.00	0.00	0.00
7,400.0	23.17	147.90	6,885.0	-2,172.6	1,362.9	2,563.4	0.00	0.00	0.00
7,500.0	23.17	147.90	6,977.0	-2,205.9	1,383.8	2,602.7	0.00	0.00	0.00
7,600.0	23.17	147.90	7,068.9	-2,239.2	1,404.7	2,642.0	0.00	0.00	0.00
7,700.0	23.17	147.90	7,160.8	-2,272.5	1,425.6	2,681.3	0.00	0.00	0.00
7,800.0	23.17	147.90	7,252.8	-2,305.9	1,446.5	2,720.7	0.00	0.00	0.00
7,900.0	23.17	147.90	7,344.7	-2,339.2	1,467.4	2,760.0	0.00	0.00	0.00
8,000.0	23.17	147.90	7,436.7	-2,372.5	1,488.3	2,799.3	0.00	0.00	0.00
8,100.0	23.17	147.90	7,528.6	-2,405.8	1,509.2	2,838.6	0.00	0.00	0.00
8,200.0	23.17	147.90	7,620.5	-2,439.2	1,530.2	2,877.9	0.00	0.00	0.00
8,300.0	23.17	147.90	7,712.5	-2,472.5	1,551.1	2,917.3	0.00	0.00	0.00
Drop 3° /100'									
8,380.7	23.17	147.90	7,786.7	-2,499.4	1,567.9	2,949.0	0.00	0.00	0.00
8,400.0	22.59	147.90	7,804.4	-2,505.7	1,571.9	2,956.5	3.00	-3.00	0.00
8,500.0	19.59	147.90	7,897.7	-2,536.2	1,591.0	2,992.4	3.00	-3.00	0.00
8,600.0	16.59	147.90	7,992.8	-2,562.5	1,607.5	3,023.5	3.00	-3.00	0.00
8,700.0	13.59	147.90	8,089.3	-2,584.5	1,621.4	3,049.5	3.00	-3.00	0.00
8,800.0	10.59	147.90	8,187.1	-2,602.3	1,632.5	3,070.4	3.00	-3.00	0.00
8,900.0	7.59	147.90	8,285.8	-2,615.7	1,640.9	3,086.2	3.00	-3.00	0.00
9,000.0	4.59	147.90	8,385.3	-2,624.6	1,646.5	3,096.8	3.00	-3.00	0.00
9,100.0	1.59	147.90	8,485.1	-2,629.2	1,649.4	3,102.2	3.00	-3.00	0.00
EOD @ Vertical / Build 1.5° / 100' - Ohio Creek									
9,152.9	0.00	0.00	8,538.0	-2,629.8	1,649.8	3,102.9	3.00	-3.00	0.00
9,200.0	0.71	250.00	8,585.1	-2,629.9	1,649.5	3,102.9	1.50	1.50	0.00
EOB @ 1.34° Inc. / 250.00° Azm									

Database:	EDM 5000.1 Single User Db	Local Co-ordinate Reference:	Well ELU O13 FED 22A-24 496 - Slot 22A-24
Company:	Caerus Oil & Gas	TVD Reference:	RKB @ 8143.0usft (25')
Project:	Rio Blanco County, CO	MD Reference:	RKB @ 8143.0usft (25')
Site:	ELU O13 496 Pad	North Reference:	True
Well:	ELU O13 FED 22A-24 496	Survey Calculation Method:	Minimum Curvature
Wellbore:	Wellbore #1		
Design:	Design #3		

Planned Survey									
Measured Depth (usft)	Inclination (°)	Azimuth (°)	Vertical Depth (usft)	+N/-S (usft)	+E/-W (usft)	Vertical Section (usft)	Dogleg Rate (°/100usft)	Build Rate (°/100usft)	Turn Rate (°/100usft)
9,242.1	1.34	250.00	8,627.2	-2,630.2	1,648.8	3,102.7	1.50	1.50	0.00
9,300.0	1.34	250.00	8,685.1	-2,630.6	1,647.5	3,102.5	0.00	0.00	0.00
9,400.0	1.34	250.00	8,785.0	-2,631.4	1,645.3	3,102.1	0.00	0.00	0.00
9,500.0	1.34	250.00	8,885.0	-2,632.2	1,643.1	3,101.6	0.00	0.00	0.00
9,600.0	1.34	250.00	8,985.0	-2,633.0	1,640.9	3,101.2	0.00	0.00	0.00
Williams Fork									
9,662.0	1.34	250.00	9,047.0	-2,633.5	1,639.6	3,101.0	0.00	0.00	0.00
9,700.0	1.34	250.00	9,085.0	-2,633.8	1,638.7	3,100.8	0.00	0.00	0.00
9,800.0	1.34	250.00	9,184.9	-2,634.6	1,636.5	3,100.4	0.00	0.00	0.00
9,900.0	1.34	250.00	9,284.9	-2,635.4	1,634.3	3,100.0	0.00	0.00	0.00
10,000.0	1.34	250.00	9,384.9	-2,636.2	1,632.2	3,099.6	0.00	0.00	0.00
10,100.0	1.34	250.00	9,484.8	-2,637.0	1,630.0	3,099.1	0.00	0.00	0.00
10,200.0	1.34	250.00	9,584.8	-2,637.8	1,627.8	3,098.7	0.00	0.00	0.00
10,300.0	1.34	250.00	9,684.8	-2,638.6	1,625.6	3,098.3	0.00	0.00	0.00
10,400.0	1.34	250.00	9,784.8	-2,639.4	1,623.4	3,097.9	0.00	0.00	0.00
10,500.0	1.34	250.00	9,884.7	-2,640.2	1,621.2	3,097.5	0.00	0.00	0.00
10,600.0	1.34	250.00	9,984.7	-2,641.0	1,619.0	3,097.1	0.00	0.00	0.00
10,700.0	1.34	250.00	10,084.7	-2,641.8	1,616.8	3,096.6	0.00	0.00	0.00
10,800.0	1.34	250.00	10,184.7	-2,642.6	1,614.6	3,096.2	0.00	0.00	0.00
10,900.0	1.34	250.00	10,284.6	-2,643.4	1,612.4	3,095.8	0.00	0.00	0.00
11,000.0	1.34	250.00	10,384.6	-2,644.2	1,610.2	3,095.4	0.00	0.00	0.00
11,100.0	1.34	250.00	10,484.6	-2,645.0	1,608.0	3,095.0	0.00	0.00	0.00
11,200.0	1.34	250.00	10,584.5	-2,645.8	1,605.8	3,094.6	0.00	0.00	0.00
11,300.0	1.34	250.00	10,684.5	-2,646.6	1,603.6	3,094.1	0.00	0.00	0.00
11,400.0	1.34	250.00	10,784.5	-2,647.4	1,601.4	3,093.7	0.00	0.00	0.00
11,500.0	1.34	250.00	10,884.5	-2,648.2	1,599.2	3,093.3	0.00	0.00	0.00
11,600.0	1.34	250.00	10,984.4	-2,649.0	1,597.0	3,092.9	0.00	0.00	0.00
11,700.0	1.34	250.00	11,084.4	-2,649.8	1,594.8	3,092.5	0.00	0.00	0.00
11,800.0	1.34	250.00	11,184.4	-2,650.6	1,592.6	3,092.1	0.00	0.00	0.00
11,900.0	1.34	250.00	11,284.4	-2,651.4	1,590.5	3,091.6	0.00	0.00	0.00
12,000.0	1.34	250.00	11,384.3	-2,652.2	1,588.3	3,091.2	0.00	0.00	0.00
12,100.0	1.34	250.00	11,484.3	-2,653.0	1,586.1	3,090.8	0.00	0.00	0.00
12,200.0	1.34	250.00	11,584.3	-2,653.8	1,583.9	3,090.4	0.00	0.00	0.00
12,300.0	1.34	250.00	11,684.2	-2,654.6	1,581.7	3,090.0	0.00	0.00	0.00
12,400.0	1.34	250.00	11,784.2	-2,655.4	1,579.5	3,089.6	0.00	0.00	0.00
12,500.0	1.34	250.00	11,884.2	-2,656.2	1,577.3	3,089.1	0.00	0.00	0.00
Cameo									
12,565.8	1.34	250.00	11,950.0	-2,656.7	1,575.8	3,088.9	0.00	0.00	0.00
12,600.0	1.34	250.00	11,984.2	-2,657.0	1,575.1	3,088.7	0.00	0.00	0.00
12,700.0	1.34	250.00	12,084.1	-2,657.8	1,572.9	3,088.3	0.00	0.00	0.00
12,800.0	1.34	250.00	12,184.1	-2,658.6	1,570.7	3,087.9	0.00	0.00	0.00
12,900.0	1.34	250.00	12,284.1	-2,659.4	1,568.5	3,087.5	0.00	0.00	0.00
Rollins									
12,978.9	1.34	250.00	12,363.0	-2,660.0	1,566.8	3,087.1	0.00	0.00	0.00
13,000.0	1.34	250.00	12,384.1	-2,660.2	1,566.3	3,087.1	0.00	0.00	0.00
13,100.0	1.34	250.00	12,484.0	-2,661.0	1,564.1	3,086.6	0.00	0.00	0.00
13,200.0	1.34	250.00	12,584.0	-2,661.8	1,561.9	3,086.2	0.00	0.00	0.00
13,300.0	1.34	250.00	12,684.0	-2,662.6	1,559.7	3,085.8	0.00	0.00	0.00
13,400.0	1.34	250.00	12,783.9	-2,663.4	1,557.5	3,085.4	0.00	0.00	0.00
TD @ 13479.1' MD / 12863.0' TVD									
13,479.1	1.34	250.00	12,863.0	-2,664.0	1,555.8	3,085.1	0.00	0.00	0.00

Database:	EDM 5000.1 Single User Db	Local Co-ordinate Reference:	Well ELU O13 FED 22A-24 496 - Slot 22A-24
Company:	Caerus Oil & Gas	TVD Reference:	RKB @ 8143.0usft (25')
Project:	Rio Blanco County, CO	MD Reference:	RKB @ 8143.0usft (25')
Site:	ELU O13 496 Pad	North Reference:	True
Well:	ELU O13 FED 22A-24 496	Survey Calculation Method:	Minimum Curvature
Wellbore:	Wellbore #1		
Design:	Design #3		

Design Targets

Target Name

- hit/miss target	Dip Angle	Dip Dir.	TVD	+N/-S	+E/-W	Northing	Easting	Latitude	Longitude
- Shape	(°)	(°)	(usft)	(usft)	(usft)	(usft)	(usft)		
OHCR - 22A-24	0.00	0.00	8,538.0	-2,629.8	1,649.8	14,426,808.61	2,453,645.52	39.691470	-108.109412
- plan hits target center									
- Point									
PBHL - 22A-24	0.00	0.00	12,863.0	-2,664.0	1,555.8	14,426,771.40	2,453,552.70	39.691377	-108.109746
- plan hits target center									
- Ellipse (radii L100.0 W50.0 on 250.00 azi)									

Formations

Measured Depth	Vertical Depth	Name	Lithology	Dip	Dip Direction
(usft)	(usft)			(°)	(°)
4,140.1	3,888.0	Wasatch			
6,750.6	6,288.0	Wasatch G			
7,076.9	6,588.0	Fort Union			
9,152.9	8,538.0	Ohio Creek			
9,662.0	9,047.0	Williams Fork			
12,565.8	11,950.0	Cameo			
12,978.9	12,363.0	Rollins			

Plan Annotations

Measured Depth	Vertical Depth	Local Coordinates		Comment
(usft)	(usft)	+N/-S	+E/-W	
(usft)	(usft)	(usft)	(usft)	
500.0	500.0	0.0	0.0	Build 3° / 100'
1,272.2	1,251.3	-130.5	81.8	EOB @ 23.17° Inc. / 147.90° Azm
8,380.7	7,786.7	-2,499.4	1,567.9	Drop 3° / 100'
9,152.9	8,538.0	-2,629.8	1,649.8	EOD @ Vertical / Build 1.5° / 100'
9,242.1	8,627.2	-2,630.2	1,648.8	EOB @ 1.34° Inc. / 250.00° Azm
13,479.1	12,863.0	-2,664.0	1,555.8	TD @ 13479.1' MD / 12863.0' TVD