

Project: Rio Blanco County, CO
 Site: ELU O13 496 Pad
 Well: ELU O13 FED 21C-24 496
 Wellbore: Wellbore #1
 Design: Design #3
 Latitude: 39.698690
 Longitude: -108.115208
 Ground Level: 8118.0
 RKB @ 8143.0usft (25')

PROJECT DETAILS: Rio Blanco County, CO

Geodetic System: Universal Transverse Mercator (US Survey Feet)
 Datum: NAD 1927 - Western US
 Ellipsoid: Clarke 1886
 Zone: Zone 12N (114 W to 108 W)
 System Datum: Mean Sea Level

REFERENCE INFORMATION

Vertical (TVD) Reference: RKB @ 8143.0usft (25')
 Section (VS) Reference: Slot - 21C-24(0.0N, 0.0E)
 Measured Depth Reference: RKB @ 8143.0usft (25')
 Calculation Method: Minimum Curvature

FORMATION TOP DETAILS

TVDPath	MDPath	Formation
3917.0	4102.5	Wasatch
6317.0	6651.9	Wasatch G
6617.0	6970.6	Fort Union
8572.0	9020.1	Ohio Creek
9076.0	9524.2	Williams Fork
12006.0	12455.0	Cameo
12373.0	12822.1	Rollins

SECTION DETAILS

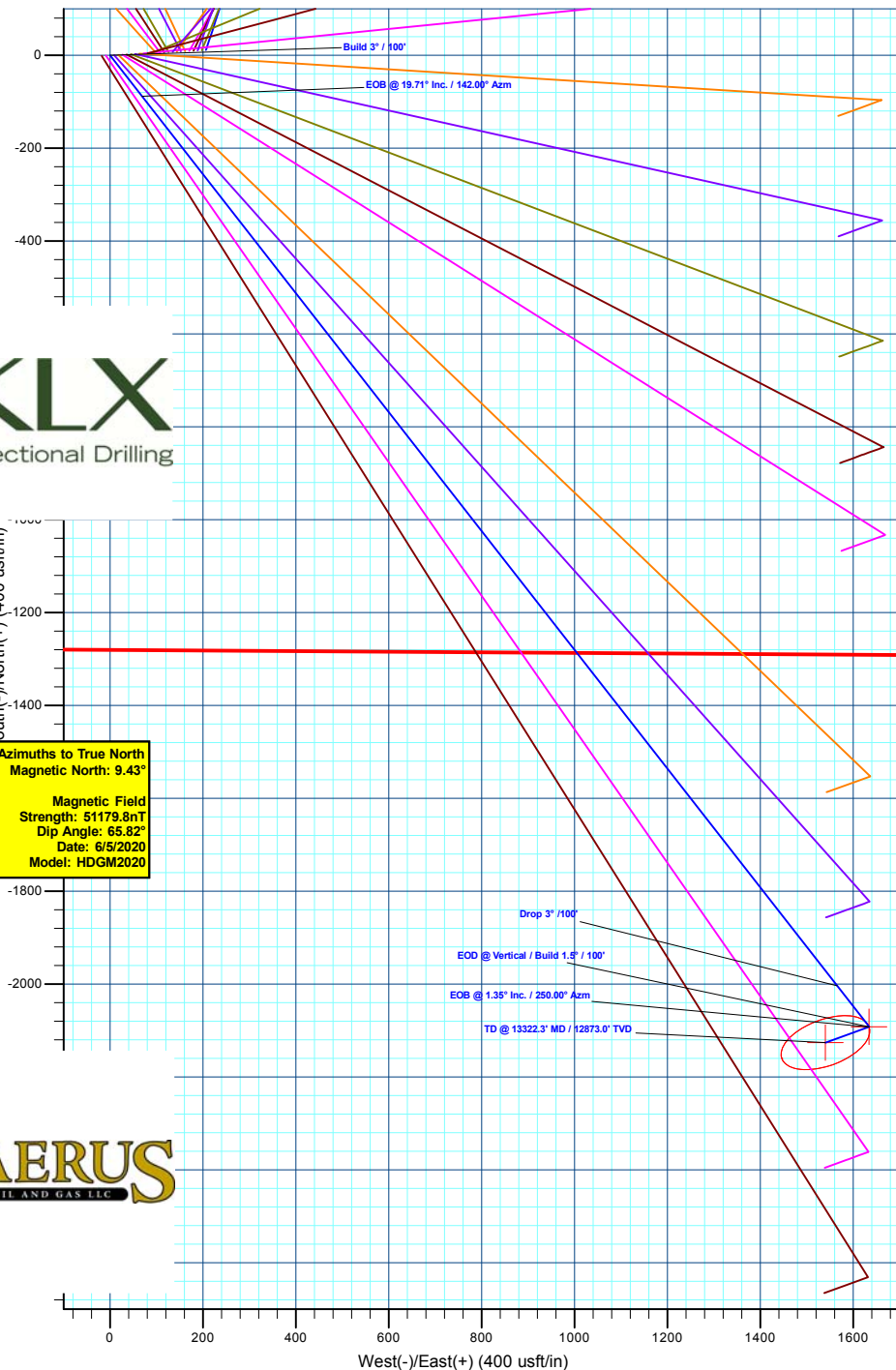
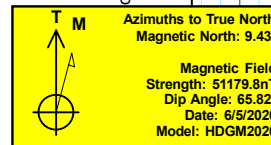
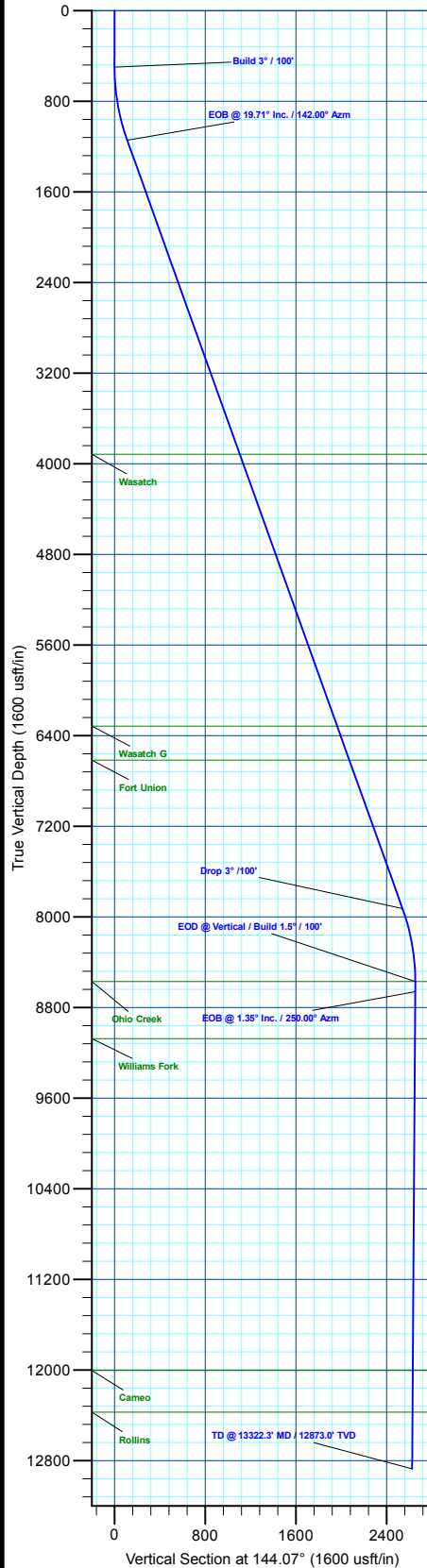
MD	Inc	Azi	TVD	+N/-S	+E/-W	Dleg	TFace	VSect	Annotation
0.0	0.00	0.00	0.0	0.0	0.0	0.00	0.00	0.0	
500.0	0.00	0.00	500.0	0.0	0.0	0.00	0.00	0.0	Build 3° / 100'
1157.1	19.71	142.00	1144.2	-88.2	68.9	3.00	142.00	111.9	EOB @ 19.71° Inc. / 142.00° Azm
8363.0	19.71	142.00	7927.8	-2003.6	1565.5	0.00	0.00	2540.9	Drop 3° / 100'
9020.1	0.00	0.00	8572.0	-2091.8	1634.4	3.00	180.00	2652.8	EOD @ Vertical / Build 1.5° / 100'
9109.8	1.35	250.00	8661.7	-2092.1	1633.4	1.50	250.00	2652.5	EOB @ 1.35° Inc. / 250.00° Azm
13322.3	1.35	250.00	12873.0	-2126.0	1540.4	0.00	0.00	2625.4	TD @ 13322.3' MD / 12873.0' TVD

DESIGN TARGET DETAILS

Name	TVD	+N/-S	+E/-W	Northing	Easting	Latitude	Longitude
OHCR - 21C-24	8572.0	-2091.8	1634.4	14427347.51	2453630.72	39.692950	-108.109403
PBHL - 21C-24	12873.0	-2126.0	1540.4	14427310.30	2453537.90	39.692856	-108.109737

WELL DETAILS: ELU O13 FED 21C-24 496

+N/-S	+E/-W	Ground Level : 8118.0	Latitude	Longitude
0.0	0.0	Northing 14429385.60 Easting 2451929.90	39.698690	-108.115208



Plan: Design #3 (ELU O13 FED 21C-24 496/Wellbore #1)

Created By: Will Jircik Date: 13:52, November 15 2022



Caerus Oil & Gas

Rio Blanco County, CO

ELU O13 496 Pad

ELU O13 FED 21C-24 496 - Slot 21C-24

Wellbore #1

Plan: Design #3

KLX Well Planning Report

15 November, 2022



Database:	EDM 5000.1 Single User Db	Local Co-ordinate Reference:	Well ELU O13 FED 21C-24 496 - Slot 21C-24
Company:	Caerus Oil & Gas	TVD Reference:	RKB @ 8143.0usft (25')
Project:	Rio Blanco County, CO	MD Reference:	RKB @ 8143.0usft (25')
Site:	ELU O13 496 Pad	North Reference:	True
Well:	ELU O13 FED 21C-24 496	Survey Calculation Method:	Minimum Curvature
Wellbore:	Wellbore #1		
Design:	Design #3		

Project	Rio Blanco County, CO		
Map System:	Universal Transverse Mercator (US Survey Fee	System Datum:	Mean Sea Level
Geo Datum:	NAD 1927 - Western US		
Map Zone:	Zone 12N (114 W to 108 W)		

Site	ELU O13 496 Pad				
Site Position:		Northing:	14,429,398.00 usft	Latitude:	39.698712
From:	Map	Easting:	2,452,071.40 usft	Longitude:	-108.114705
Position Uncertainty:	0.0 usft	Slot Radius:	13-3/16 "	Grid Convergence:	1.84 °

Well	ELU O13 FED 21C-24 496 - Slot 21C-24					
Well Position	+N/-S	-7.8 usft	Northing:	14,429,385.60 usft	Latitude:	39.698690
	+E/-W	-141.8 usft	Easting:	2,451,929.90 usft	Longitude:	-108.115209
Position Uncertainty	0.0 usft		Wellhead Elevation:		Ground Level:	8,118.0 usft

Wellbore	Wellbore #1				
Magnetics	Model Name	Sample Date	Declination (°)	Dip Angle (°)	Field Strength (nT)
	HDGM2020	6/5/2020	9.43	65.82	51,179.80000000

Design	Design #3			
Audit Notes:				
Version:	Phase:	PLAN	Tie On Depth:	0.0
Vertical Section:	Depth From (TVD) (usft)	+N/-S (usft)	+E/-W (usft)	Direction (°)
	0.0	0.0	0.0	144.07

Plan Sections										
Measured Depth (usft)	Inclination (°)	Azimuth (°)	Vertical Depth (usft)	+N/-S (usft)	+E/-W (usft)	Dogleg Rate (°/100usft)	Build Rate (°/100usft)	Turn Rate (°/100usft)	TFO (°)	Target
0.0	0.00	0.00	0.0	0.0	0.0	0.00	0.00	0.00	0.00	
500.0	0.00	0.00	500.0	0.0	0.0	0.00	0.00	0.00	0.00	
1,157.1	19.71	142.00	1,144.2	-88.2	68.9	3.00	3.00	0.00	142.00	
8,363.0	19.71	142.00	7,927.8	-2,003.6	1,565.5	0.00	0.00	0.00	0.00	
9,020.1	0.00	0.00	8,572.0	-2,091.8	1,634.4	3.00	-3.00	0.00	180.00	OHCR - 21C-24
9,109.8	1.35	250.00	8,661.7	-2,092.1	1,633.4	1.50	1.50	-122.59	250.00	
13,322.3	1.35	250.00	12,873.0	-2,126.0	1,540.4	0.00	0.00	0.00	0.00	PBHL - 21C-24

Database:	EDM 5000.1 Single User Db	Local Co-ordinate Reference:	Well ELU O13 FED 21C-24 496 - Slot 21C-24
Company:	Caerus Oil & Gas	TVD Reference:	RKB @ 8143.0usft (25')
Project:	Rio Blanco County, CO	MD Reference:	RKB @ 8143.0usft (25')
Site:	ELU O13 496 Pad	North Reference:	True
Well:	ELU O13 FED 21C-24 496	Survey Calculation Method:	Minimum Curvature
Wellbore:	Wellbore #1		
Design:	Design #3		

Planned Survey									
Measured Depth (usft)	Inclination (°)	Azimuth (°)	Vertical Depth (usft)	+N/-S (usft)	+E/-W (usft)	Vertical Section (usft)	Dogleg Rate (°/100usft)	Build Rate (°/100usft)	Turn Rate (°/100usft)
0.0	0.00	0.00	0.0	0.0	0.0	0.0	0.00	0.00	0.00
100.0	0.00	0.00	100.0	0.0	0.0	0.0	0.00	0.00	0.00
200.0	0.00	0.00	200.0	0.0	0.0	0.0	0.00	0.00	0.00
300.0	0.00	0.00	300.0	0.0	0.0	0.0	0.00	0.00	0.00
400.0	0.00	0.00	400.0	0.0	0.0	0.0	0.00	0.00	0.00
Build 3° / 100'									
500.0	0.00	0.00	500.0	0.0	0.0	0.0	0.00	0.00	0.00
600.0	3.00	142.00	600.0	-2.1	1.6	2.6	3.00	3.00	0.00
700.0	6.00	142.00	699.6	-8.2	6.4	10.5	3.00	3.00	0.00
800.0	9.00	142.00	798.8	-18.5	14.5	23.5	3.00	3.00	0.00
900.0	12.00	142.00	897.1	-32.9	25.7	41.7	3.00	3.00	0.00
1,000.0	15.00	142.00	994.3	-51.3	40.1	65.0	3.00	3.00	0.00
1,100.0	18.00	142.00	1,090.2	-73.7	57.6	93.4	3.00	3.00	0.00
EOB @ 19.71° Inc. / 142.00° Azm									
1,157.1	19.71	142.00	1,144.2	-88.2	68.9	111.9	3.00	3.00	0.00
1,200.0	19.71	142.00	1,184.6	-99.6	77.8	126.3	0.00	0.00	0.00
1,300.0	19.71	142.00	1,278.7	-126.2	98.6	160.0	0.00	0.00	0.00
1,400.0	19.71	142.00	1,372.9	-152.8	119.4	193.7	0.00	0.00	0.00
1,500.0	19.71	142.00	1,467.0	-179.3	140.1	227.4	0.00	0.00	0.00
1,600.0	19.71	142.00	1,561.2	-205.9	160.9	261.2	0.00	0.00	0.00
1,700.0	19.71	142.00	1,655.3	-232.5	181.7	294.9	0.00	0.00	0.00
1,800.0	19.71	142.00	1,749.4	-259.1	202.4	328.6	0.00	0.00	0.00
1,900.0	19.71	142.00	1,843.6	-285.7	223.2	362.3	0.00	0.00	0.00
2,000.0	19.71	142.00	1,937.7	-312.2	244.0	396.0	0.00	0.00	0.00
2,100.0	19.71	142.00	2,031.8	-338.8	264.7	429.7	0.00	0.00	0.00
2,200.0	19.71	142.00	2,126.0	-365.4	285.5	463.4	0.00	0.00	0.00
2,300.0	19.71	142.00	2,220.1	-392.0	306.3	497.1	0.00	0.00	0.00
2,400.0	19.71	142.00	2,314.3	-418.6	327.0	530.8	0.00	0.00	0.00
2,500.0	19.71	142.00	2,408.4	-445.1	347.8	564.5	0.00	0.00	0.00
2,600.0	19.71	142.00	2,502.5	-471.7	368.6	598.3	0.00	0.00	0.00
2,700.0	19.71	142.00	2,596.7	-498.3	389.3	632.0	0.00	0.00	0.00
2,800.0	19.71	142.00	2,690.8	-524.9	410.1	665.7	0.00	0.00	0.00
2,900.0	19.71	142.00	2,785.0	-551.5	430.9	699.4	0.00	0.00	0.00
3,000.0	19.71	142.00	2,879.1	-578.0	451.7	733.1	0.00	0.00	0.00
3,100.0	19.71	142.00	2,973.2	-604.6	472.4	766.8	0.00	0.00	0.00
3,200.0	19.71	142.00	3,067.4	-631.2	493.2	800.5	0.00	0.00	0.00
3,300.0	19.71	142.00	3,161.5	-657.8	514.0	834.2	0.00	0.00	0.00
3,400.0	19.71	142.00	3,255.7	-684.4	534.7	867.9	0.00	0.00	0.00
3,500.0	19.71	142.00	3,349.8	-711.0	555.5	901.6	0.00	0.00	0.00
3,600.0	19.71	142.00	3,443.9	-737.5	576.3	935.3	0.00	0.00	0.00
3,700.0	19.71	142.00	3,538.1	-764.1	597.0	969.1	0.00	0.00	0.00
3,800.0	19.71	142.00	3,632.2	-790.7	617.8	1,002.8	0.00	0.00	0.00
3,900.0	19.71	142.00	3,726.4	-817.3	638.6	1,036.5	0.00	0.00	0.00
4,000.0	19.71	142.00	3,820.5	-843.9	659.3	1,070.2	0.00	0.00	0.00
4,100.0	19.71	142.00	3,914.6	-870.4	680.1	1,103.9	0.00	0.00	0.00
Wasatch									
4,102.5	19.71	142.00	3,917.0	-871.1	680.6	1,104.7	0.00	0.00	0.00
4,200.0	19.71	142.00	4,008.8	-897.0	700.9	1,137.6	0.00	0.00	0.00
4,300.0	19.71	142.00	4,102.9	-923.6	721.6	1,171.3	0.00	0.00	0.00
4,400.0	19.71	142.00	4,197.0	-950.2	742.4	1,205.0	0.00	0.00	0.00
4,500.0	19.71	142.00	4,291.2	-976.8	763.2	1,238.7	0.00	0.00	0.00
4,600.0	19.71	142.00	4,385.3	-1,003.3	783.9	1,272.4	0.00	0.00	0.00
4,700.0	19.71	142.00	4,479.5	-1,029.9	804.7	1,306.2	0.00	0.00	0.00

Database:	EDM 5000.1 Single User Db	Local Co-ordinate Reference:	Well ELU O13 FED 21C-24 496 - Slot 21C-24
Company:	Caerus Oil & Gas	TVD Reference:	RKB @ 8143.0usft (25')
Project:	Rio Blanco County, CO	MD Reference:	RKB @ 8143.0usft (25')
Site:	ELU O13 496 Pad	North Reference:	True
Well:	ELU O13 FED 21C-24 496	Survey Calculation Method:	Minimum Curvature
Wellbore:	Wellbore #1		
Design:	Design #3		

Planned Survey									
Measured Depth (usft)	Inclination (°)	Azimuth (°)	Vertical Depth (usft)	+N/-S (usft)	+E/-W (usft)	Vertical Section (usft)	Dogleg Rate (°/100usft)	Build Rate (°/100usft)	Turn Rate (°/100usft)
4,800.0	19.71	142.00	4,573.6	-1,056.5	825.5	1,339.9	0.00	0.00	0.00
4,900.0	19.71	142.00	4,667.7	-1,083.1	846.2	1,373.6	0.00	0.00	0.00
5,000.0	19.71	142.00	4,761.9	-1,109.7	867.0	1,407.3	0.00	0.00	0.00
5,100.0	19.71	142.00	4,856.0	-1,136.2	887.8	1,441.0	0.00	0.00	0.00
5,200.0	19.71	142.00	4,950.2	-1,162.8	908.6	1,474.7	0.00	0.00	0.00
5,300.0	19.71	142.00	5,044.3	-1,189.4	929.3	1,508.4	0.00	0.00	0.00
5,400.0	19.71	142.00	5,138.4	-1,216.0	950.1	1,542.1	0.00	0.00	0.00
5,500.0	19.71	142.00	5,232.6	-1,242.6	970.9	1,575.8	0.00	0.00	0.00
5,600.0	19.71	142.00	5,326.7	-1,269.1	991.6	1,609.5	0.00	0.00	0.00
5,700.0	19.71	142.00	5,420.9	-1,295.7	1,012.4	1,643.3	0.00	0.00	0.00
5,800.0	19.71	142.00	5,515.0	-1,322.3	1,033.2	1,677.0	0.00	0.00	0.00
5,900.0	19.71	142.00	5,609.1	-1,348.9	1,053.9	1,710.7	0.00	0.00	0.00
6,000.0	19.71	142.00	5,703.3	-1,375.5	1,074.7	1,744.4	0.00	0.00	0.00
6,100.0	19.71	142.00	5,797.4	-1,402.0	1,095.5	1,778.1	0.00	0.00	0.00
6,200.0	19.71	142.00	5,891.6	-1,428.6	1,116.2	1,811.8	0.00	0.00	0.00
6,300.0	19.71	142.00	5,985.7	-1,455.2	1,137.0	1,845.5	0.00	0.00	0.00
6,400.0	19.71	142.00	6,079.8	-1,481.8	1,157.8	1,879.2	0.00	0.00	0.00
6,500.0	19.71	142.00	6,174.0	-1,508.4	1,178.5	1,912.9	0.00	0.00	0.00
6,600.0	19.71	142.00	6,268.1	-1,534.9	1,199.3	1,946.6	0.00	0.00	0.00
Wasatch G									
6,651.9	19.71	142.00	6,317.0	-1,548.7	1,210.1	1,964.1	0.00	0.00	0.00
6,700.0	19.71	142.00	6,362.2	-1,561.5	1,220.1	1,980.4	0.00	0.00	0.00
6,800.0	19.71	142.00	6,456.4	-1,588.1	1,240.8	2,014.1	0.00	0.00	0.00
6,900.0	19.71	142.00	6,550.5	-1,614.7	1,261.6	2,047.8	0.00	0.00	0.00
Fort Union									
6,970.6	19.71	142.00	6,617.0	-1,633.5	1,276.3	2,071.6	0.00	0.00	0.00
7,000.0	19.71	142.00	6,644.7	-1,641.3	1,282.4	2,081.5	0.00	0.00	0.00
7,100.0	19.71	142.00	6,738.8	-1,667.8	1,303.1	2,115.2	0.00	0.00	0.00
7,200.0	19.71	142.00	6,832.9	-1,694.4	1,323.9	2,148.9	0.00	0.00	0.00
7,300.0	19.71	142.00	6,927.1	-1,721.0	1,344.7	2,182.6	0.00	0.00	0.00
7,400.0	19.71	142.00	7,021.2	-1,747.6	1,365.5	2,216.3	0.00	0.00	0.00
7,500.0	19.71	142.00	7,115.4	-1,774.2	1,386.2	2,250.0	0.00	0.00	0.00
7,600.0	19.71	142.00	7,209.5	-1,800.7	1,407.0	2,283.7	0.00	0.00	0.00
7,700.0	19.71	142.00	7,303.6	-1,827.3	1,427.8	2,317.4	0.00	0.00	0.00
7,800.0	19.71	142.00	7,397.8	-1,853.9	1,448.5	2,351.2	0.00	0.00	0.00
7,900.0	19.71	142.00	7,491.9	-1,880.5	1,469.3	2,384.9	0.00	0.00	0.00
8,000.0	19.71	142.00	7,586.1	-1,907.1	1,490.1	2,418.6	0.00	0.00	0.00
8,100.0	19.71	142.00	7,680.2	-1,933.6	1,510.8	2,452.3	0.00	0.00	0.00
8,200.0	19.71	142.00	7,774.3	-1,960.2	1,531.6	2,486.0	0.00	0.00	0.00
8,300.0	19.71	142.00	7,868.5	-1,986.8	1,552.4	2,519.7	0.00	0.00	0.00
Drop 3° /100'									
8,363.0	19.71	142.00	7,927.8	-2,003.6	1,565.5	2,540.9	0.00	0.00	0.00
8,400.0	18.60	142.00	7,962.7	-2,013.1	1,572.9	2,553.1	3.00	-3.00	0.00
8,500.0	15.60	142.00	8,058.3	-2,036.3	1,591.0	2,582.5	3.00	-3.00	0.00
8,600.0	12.60	142.00	8,155.3	-2,055.5	1,606.0	2,606.8	3.00	-3.00	0.00
8,700.0	9.60	142.00	8,253.4	-2,070.7	1,617.9	2,626.1	3.00	-3.00	0.00
8,800.0	6.60	142.00	8,352.4	-2,081.8	1,626.6	2,640.1	3.00	-3.00	0.00
8,900.0	3.60	142.00	8,452.0	-2,088.8	1,632.0	2,649.0	3.00	-3.00	0.00
9,000.0	0.60	142.00	8,551.9	-2,091.7	1,634.3	2,652.7	3.00	-3.00	0.00
EOD @ Vertical / Build 1.5° / 100' - Ohio Creek									
9,020.1	0.00	0.00	8,572.0	-2,091.8	1,634.4	2,652.8	3.00	-3.00	0.00
EOB @ 1.35° Inc. / 250.00° Azm									
9,109.8	1.35	250.00	8,661.7	-2,092.1	1,633.4	2,652.5	1.50	1.50	0.00
9,200.0	1.35	250.00	8,751.9	-2,092.8	1,631.4	2,651.9	0.00	0.00	0.00

Database:	EDM 5000.1 Single User Db	Local Co-ordinate Reference:	Well ELU O13 FED 21C-24 496 - Slot 21C-24
Company:	Caerus Oil & Gas	TVD Reference:	RKB @ 8143.0usft (25')
Project:	Rio Blanco County, CO	MD Reference:	RKB @ 8143.0usft (25')
Site:	ELU O13 496 Pad	North Reference:	True
Well:	ELU O13 FED 21C-24 496	Survey Calculation Method:	Minimum Curvature
Wellbore:	Wellbore #1		
Design:	Design #3		

Planned Survey									
Measured Depth (usft)	Inclination (°)	Azimuth (°)	Vertical Depth (usft)	+N/-S (usft)	+E/-W (usft)	Vertical Section (usft)	Dogleg Rate (°/100usft)	Build Rate (°/100usft)	Turn Rate (°/100usft)
9,300.0	1.35	250.00	8,851.8	-2,093.6	1,629.2	2,651.3	0.00	0.00	0.00
9,400.0	1.35	250.00	8,951.8	-2,094.4	1,627.0	2,650.6	0.00	0.00	0.00
9,500.0	1.35	250.00	9,051.8	-2,095.3	1,624.8	2,650.0	0.00	0.00	0.00
Williams Fork									
9,524.2	1.35	250.00	9,076.0	-2,095.4	1,624.2	2,649.8	0.00	0.00	0.00
9,600.0	1.35	250.00	9,151.7	-2,096.1	1,622.6	2,649.4	0.00	0.00	0.00
9,700.0	1.35	250.00	9,251.7	-2,096.9	1,620.4	2,648.7	0.00	0.00	0.00
9,800.0	1.35	250.00	9,351.7	-2,097.7	1,618.1	2,648.1	0.00	0.00	0.00
9,900.0	1.35	250.00	9,451.7	-2,098.5	1,615.9	2,647.4	0.00	0.00	0.00
10,000.0	1.35	250.00	9,551.6	-2,099.3	1,613.7	2,646.8	0.00	0.00	0.00
10,100.0	1.35	250.00	9,651.6	-2,100.1	1,611.5	2,646.1	0.00	0.00	0.00
10,200.0	1.35	250.00	9,751.6	-2,100.9	1,609.3	2,645.5	0.00	0.00	0.00
10,300.0	1.35	250.00	9,851.6	-2,101.7	1,607.1	2,644.8	0.00	0.00	0.00
10,400.0	1.35	250.00	9,951.5	-2,102.5	1,604.9	2,644.2	0.00	0.00	0.00
10,500.0	1.35	250.00	10,051.5	-2,103.3	1,602.7	2,643.6	0.00	0.00	0.00
10,600.0	1.35	250.00	10,151.5	-2,104.1	1,600.5	2,642.9	0.00	0.00	0.00
10,700.0	1.35	250.00	10,251.4	-2,104.9	1,598.3	2,642.3	0.00	0.00	0.00
10,800.0	1.35	250.00	10,351.4	-2,105.7	1,596.1	2,641.6	0.00	0.00	0.00
10,900.0	1.35	250.00	10,451.4	-2,106.5	1,593.9	2,641.0	0.00	0.00	0.00
11,000.0	1.35	250.00	10,551.4	-2,107.3	1,591.7	2,640.3	0.00	0.00	0.00
11,100.0	1.35	250.00	10,651.3	-2,108.1	1,589.4	2,639.7	0.00	0.00	0.00
11,200.0	1.35	250.00	10,751.3	-2,108.9	1,587.2	2,639.0	0.00	0.00	0.00
11,300.0	1.35	250.00	10,851.3	-2,109.7	1,585.0	2,638.4	0.00	0.00	0.00
11,400.0	1.35	250.00	10,951.3	-2,110.5	1,582.8	2,637.8	0.00	0.00	0.00
11,500.0	1.35	250.00	11,051.2	-2,111.3	1,580.6	2,637.1	0.00	0.00	0.00
11,600.0	1.35	250.00	11,151.2	-2,112.1	1,578.4	2,636.5	0.00	0.00	0.00
11,700.0	1.35	250.00	11,251.2	-2,112.9	1,576.2	2,635.8	0.00	0.00	0.00
11,800.0	1.35	250.00	11,351.1	-2,113.7	1,574.0	2,635.2	0.00	0.00	0.00
11,900.0	1.35	250.00	11,451.1	-2,114.5	1,571.8	2,634.5	0.00	0.00	0.00
12,000.0	1.35	250.00	11,551.1	-2,115.3	1,569.6	2,633.9	0.00	0.00	0.00
12,100.0	1.35	250.00	11,651.1	-2,116.1	1,567.4	2,633.2	0.00	0.00	0.00
12,200.0	1.35	250.00	11,751.0	-2,116.9	1,565.2	2,632.6	0.00	0.00	0.00
12,300.0	1.35	250.00	11,851.0	-2,117.7	1,563.0	2,632.0	0.00	0.00	0.00
12,400.0	1.35	250.00	11,951.0	-2,118.6	1,560.8	2,631.3	0.00	0.00	0.00
Cameo									
12,455.0	1.35	250.00	12,006.0	-2,119.0	1,559.5	2,631.0	0.00	0.00	0.00
12,500.0	1.35	250.00	12,050.9	-2,119.4	1,558.5	2,630.7	0.00	0.00	0.00
12,600.0	1.35	250.00	12,150.9	-2,120.2	1,556.3	2,630.0	0.00	0.00	0.00
12,700.0	1.35	250.00	12,250.9	-2,121.0	1,554.1	2,629.4	0.00	0.00	0.00
12,800.0	1.35	250.00	12,350.9	-2,121.8	1,551.9	2,628.7	0.00	0.00	0.00
Rollins									
12,822.1	1.35	250.00	12,373.0	-2,121.9	1,551.4	2,628.6	0.00	0.00	0.00
12,900.0	1.35	250.00	12,450.8	-2,122.6	1,549.7	2,628.1	0.00	0.00	0.00
13,000.0	1.35	250.00	12,550.8	-2,123.4	1,547.5	2,627.4	0.00	0.00	0.00
13,100.0	1.35	250.00	12,650.8	-2,124.2	1,545.3	2,626.8	0.00	0.00	0.00
13,200.0	1.35	250.00	12,750.8	-2,125.0	1,543.1	2,626.2	0.00	0.00	0.00
13,300.0	1.35	250.00	12,850.7	-2,125.8	1,540.9	2,625.5	0.00	0.00	0.00
TD @ 13322.3' MD / 12873.0' TVD									
13,322.3	1.35	250.00	12,873.0	-2,126.0	1,540.4	2,625.4	0.00	0.00	0.00

Database:	EDM 5000.1 Single User Db	Local Co-ordinate Reference:	Well ELU O13 FED 21C-24 496 - Slot 21C-24
Company:	Caerus Oil & Gas	TVD Reference:	RKB @ 8143.0usft (25')
Project:	Rio Blanco County, CO	MD Reference:	RKB @ 8143.0usft (25')
Site:	ELU O13 496 Pad	North Reference:	True
Well:	ELU O13 FED 21C-24 496	Survey Calculation Method:	Minimum Curvature
Wellbore:	Wellbore #1		
Design:	Design #3		

Design Targets

Target Name

- hit/miss target - Shape	Dip Angle (°)	Dip Dir. (°)	TVD (usft)	+N/-S (usft)	+E/-W (usft)	Northing (usft)	Easting (usft)	Latitude	Longitude
OHCR - 21C-24 - plan hits target center - Point	0.00	0.00	8,572.0	-2,091.8	1,634.4	14,427,347.51	2,453,630.72	39.692950	-108.109403
PBHL - 21C-24 - plan hits target center - Ellipse (radii L100.0 W50.0 on 250.00 azi)	0.00	0.00	12,873.0	-2,126.0	1,540.4	14,427,310.30	2,453,537.90	39.692856	-108.109737

Formations

Measured Depth (usft)	Vertical Depth (usft)	Name	Lithology	Dip (°)	Dip Direction (°)
4,102.5	3,917.0	Wasatch			
6,651.9	6,317.0	Wasatch G			
6,970.6	6,617.0	Fort Union			
9,020.1	8,572.0	Ohio Creek			
9,524.2	9,076.0	Williams Fork			
12,455.0	12,006.0	Cameo			
12,822.1	12,373.0	Rollins			

Plan Annotations

Measured Depth (usft)	Vertical Depth (usft)	Local Coordinates		Comment
		+N/-S (usft)	+E/-W (usft)	
500.0	500.0	0.0	0.0	Build 3° / 100'
1,157.1	1,144.2	-88.2	68.9	EOB @ 19.71° Inc. / 142.00° Azm
8,363.0	7,927.8	-2,003.6	1,565.5	Drop 3° / 100'
9,020.1	8,572.0	-2,091.8	1,634.4	EOD @ Vertical / Build 1.5° / 100'
9,109.8	8,661.7	-2,092.1	1,633.4	EOB @ 1.35° Inc. / 250.00° Azm
13,322.3	12,873.0	-2,126.0	1,540.4	TD @ 13322.3' MD / 12873.0' TVD