

Project: Rio Blanco County, CO  
 Site: ELU O13 496 Pad  
 Well: ELU O13 FED 13B-13 496  
 Wellbore: Wellbore #1  
 Design: Design #3  
 Latitude: 39.698707  
 Longitude: -108.114825  
 Ground Level: 8118.0  
 RKB @ 8143.0usft (25')

PROJECT DETAILS: Rio Blanco County, CO  
 Geodetic System: Universal Transverse Mercator (US Survey Feet)  
 Datum: NAD 1927 - Western US  
 Ellipsoid: Clarke 1886  
 Zone: Zone 12N (114 W to 108 W)  
 System Datum: Mean Sea Level

REFERENCE INFORMATION  
 Vertical (TVD) Reference: RKB @ 8143.0usft (25')  
 Section (VS) Reference: Slot - 13B-13(0.0N, 0.0E)  
 Measured Depth Reference: RKB @ 8143.0usft (25')  
 Calculation Method: Minimum Curvature

#### FORMATION TOP DETAILS

TVDPath	MDPath	Formation
4014.0	4109.3	Wasatch
6414.0	6580.6	Wasatch G
6714.0	6889.5	Fort Union
8559.0	8780.2	Ohio Creek
9141.0	9362.3	Williams Fork
11968.0	12190.1	Cameo
12393.0	12615.2	Rollins

#### SECTION DETAILS

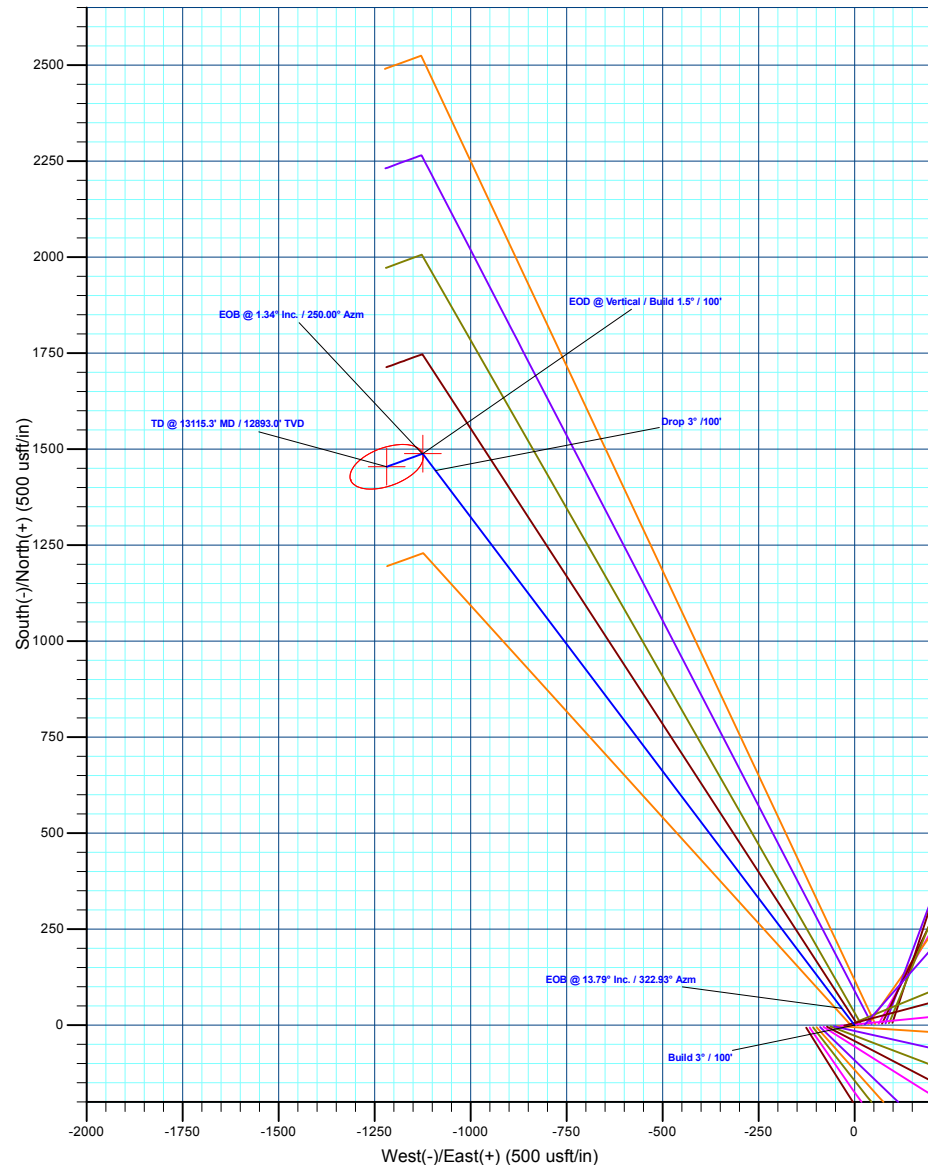
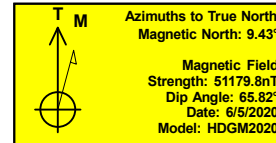
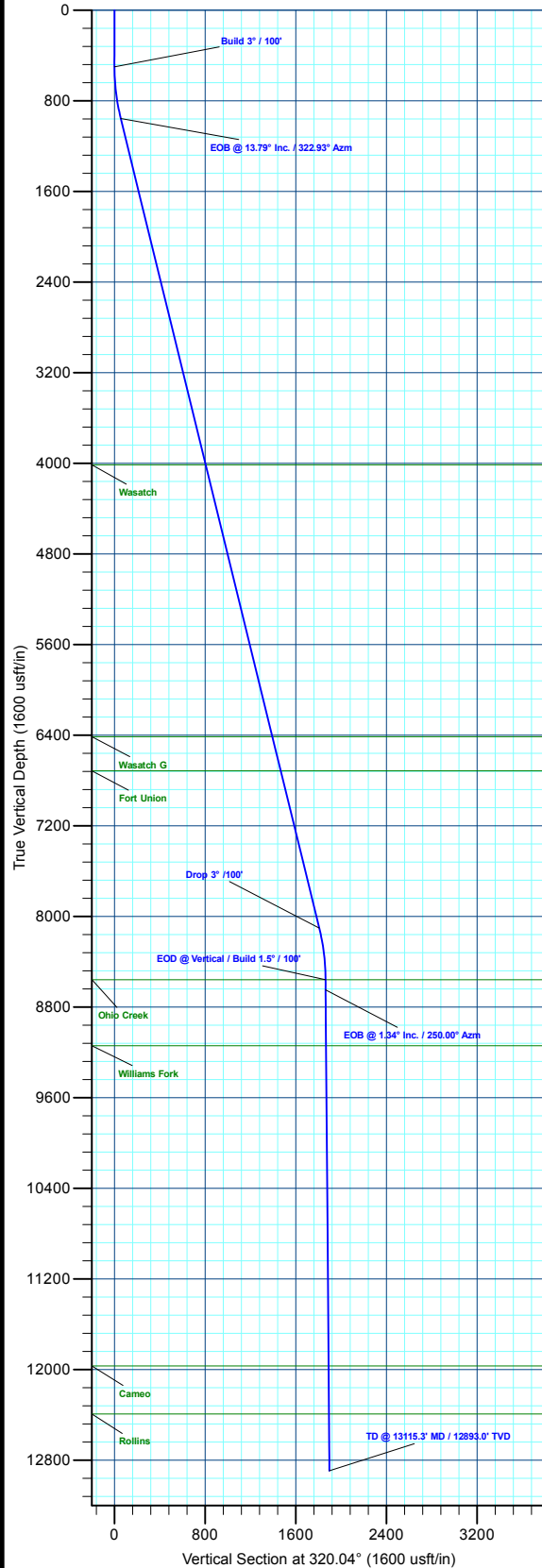
MD	Inc	Azi	TVD	+N/-S	+E/-W	Dleg	TFace	Vsect	Annotation
0.0	0.00	0.00	0.0	0.0	0.0	0.00	0.00	0.0	Build 3° / 100'
500.0	0.00	0.00	500.0	0.0	0.0	0.00	0.00	0.0	EOB @ 13.79° Inc. / 322.93° Azm
959.8	13.79	322.93	955.4	44.0	-33.2	3.00	322.93	55.0	Drop 3° / 100'
8320.3	13.79	322.93	8103.6	1444.3	-1091.2	0.00	0.00	1807.9	EOD @ Vertical / Build 1.5° / 100'
8780.2	0.00	0.00	8559.0	1488.3	-1124.4	3.00	180.00	1862.9	EOB @ 1.34° Inc. / 250.00° Azm
8869.2	1.34	250.00	8648.0	1487.9	-1125.3	1.50	250.00	1863.2	TD @ 13115.3' MD / 12893.0' TVD
13115.3	1.34	250.00	12893.0	1454.1	-1218.3	0.00	0.00	1897.0	

#### DESIGN TARGET DETAILS

Name	TVD	+N/-S	+E/-W	Northing	Easting	Latitude	Longitude
OHCR - 13B-13	8559.0	1488.3	-1124.4	14430846.31	2450865.82	39.702791	-108.118820
PBHL - 13B-13	12893.0	1454.1	-1218.3	14430809.10	2450773.00	39.702697	-108.119154

#### WELL DETAILS: ELU O13 FED 13B-13 496

+N/-S	+E/-W	Ground Level : 8118.0	Latitude	Longitude
0.0	0.0	Northing 14429395.00 Easting 2452037.50	39.698707	-108.114825



Plan: Design #3 (ELU O13 FED 13B-13 496/Wellbore #1)

Created By: Will Jircik Date: 13:36, November 15 2022



## **Caerus Oil & Gas**

**Rio Blanco County, CO**

**ELU O13 496 Pad**

**ELU O13 FED 13B-13 496 - Slot 13B-13**

**Wellbore #1**

**Plan: Design #3**

## **KLX Well Planning Report**

**15 November, 2022**



<b>Database:</b>	EDM 5000.1 Single User Db	<b>Local Co-ordinate Reference:</b>	Well ELU O13 FED 13B-13 496 - Slot 13B-13
<b>Company:</b>	Caerus Oil & Gas	<b>TVD Reference:</b>	RKB @ 8143.0usft (25')
<b>Project:</b>	Rio Blanco County, CO	<b>MD Reference:</b>	RKB @ 8143.0usft (25')
<b>Site:</b>	ELU O13 496 Pad	<b>North Reference:</b>	True
<b>Well:</b>	ELU O13 FED 13B-13 496	<b>Survey Calculation Method:</b>	Minimum Curvature
<b>Wellbore:</b>	Wellbore #1		
<b>Design:</b>	Design #3		

<b>Project</b>	Rio Blanco County, CO		
<b>Map System:</b>	Universal Transverse Mercator (US Survey Fee	<b>System Datum:</b>	Mean Sea Level
<b>Geo Datum:</b>	NAD 1927 - Western US		
<b>Map Zone:</b>	Zone 12N (114 W to 108 W)		

Site	ELU O13 496 Pad				
Site Position:		Northing:	14,429,398.00 usft	Latitude:	39.698712
From:	Map	Easting:	2,452,071.40 usft	Longitude:	-108.114705
Position Uncertainty:	0.0 usft	Slot Radius:	13-3/16 "	Grid Convergence:	1.84 °

Well	ELU O13 FED 13B-13 496 - Slot 13B-13					
Well Position	+N/-S	-1.9 usft	Northing:	14,429,395.00 usft	Latitude:	39.698707
	+E/-W	-34.0 usft	Easting:	2,452,037.50 usft	Longitude:	-108.114826
Position Uncertainty		0.0 usft	Wellhead Elevation:		Ground Level:	8,118.0 usft

<b>Wellbore</b>	Wellbore #1				
<b>Magnetics</b>	<b>Model Name</b>	<b>Sample Date</b>	<b>Declination (°)</b>	<b>Dip Angle (°)</b>	<b>Field Strength (nT)</b>
	HDGM2020	6/5/2020	9.43	65.82	51,179.80000000

<b>Design</b>	Design #3			
<b>Audit Notes:</b>				
<b>Version:</b>	<b>Phase:</b>	PLAN	<b>Tie On Depth:</b>	0.0
<b>Vertical Section:</b>	<b>Depth From (TVD) (usft)</b>	<b>+N/-S (usft)</b>	<b>+E/-W (usft)</b>	<b>Direction (°)</b>
	0.0	0.0	0.0	320.04

<b>Plan Sections</b>										
Measured Depth (usft)	Inclination (°)	Azimuth (°)	Vertical Depth (usft)	+N/-S (usft)	+E/-W (usft)	Dogleg Rate (°/100usft)	Build Rate (°/100usft)	Turn Rate (°/100usft)	TFO (°)	Target
0.0	0.00	0.00	0.0	0.0	0.0	0.00	0.00	0.00	0.00	
500.0	0.00	0.00	500.0	0.0	0.0	0.00	0.00	0.00	0.00	
959.8	13.79	322.93	955.4	44.0	-33.2	3.00	3.00	0.00	322.93	
8,320.3	13.79	322.93	8,103.6	1,444.3	-1,091.2	0.00	0.00	0.00	0.00	
8,780.2	0.00	0.00	8,559.0	1,488.3	-1,124.4	3.00	-3.00	0.00	180.00	OHCR - 13B-13
8,869.2	1.34	250.00	8,648.0	1,487.9	-1,125.3	1.50	1.50	-123.55	250.00	
13,115.3	1.34	250.00	12,893.0	1,454.1	-1,218.3	0.00	0.00	0.00	0.00	PBHL - 13B-13

<b>Database:</b>	EDM 5000.1 Single User Db	<b>Local Co-ordinate Reference:</b>	Well ELU O13 FED 13B-13 496 - Slot 13B-13
<b>Company:</b>	Caerus Oil & Gas	<b>TVD Reference:</b>	RKB @ 8143.0usft (25')
<b>Project:</b>	Rio Blanco County, CO	<b>MD Reference:</b>	RKB @ 8143.0usft (25')
<b>Site:</b>	ELU O13 496 Pad	<b>North Reference:</b>	True
<b>Well:</b>	ELU O13 FED 13B-13 496	<b>Survey Calculation Method:</b>	Minimum Curvature
<b>Wellbore:</b>	Wellbore #1		
<b>Design:</b>	Design #3		

Planned Survey									
Measured Depth (usft)	Inclination (°)	Azimuth (°)	Vertical Depth (usft)	+N/-S (usft)	+E/-W (usft)	Vertical Section (usft)	Dogleg Rate (°/100usft)	Build Rate (°/100usft)	Turn Rate (°/100usft)
0.0	0.00	0.00	0.0	0.0	0.0	0.0	0.00	0.00	0.00
100.0	0.00	0.00	100.0	0.0	0.0	0.0	0.00	0.00	0.00
200.0	0.00	0.00	200.0	0.0	0.0	0.0	0.00	0.00	0.00
300.0	0.00	0.00	300.0	0.0	0.0	0.0	0.00	0.00	0.00
400.0	0.00	0.00	400.0	0.0	0.0	0.0	0.00	0.00	0.00
<b>Build 3° / 100'</b>									
500.0	0.00	0.00	500.0	0.0	0.0	0.0	0.00	0.00	0.00
600.0	3.00	322.93	600.0	2.1	-1.6	2.6	3.00	3.00	0.00
700.0	6.00	322.93	699.6	8.3	-6.3	10.4	3.00	3.00	0.00
800.0	9.00	322.93	798.8	18.8	-14.2	23.5	3.00	3.00	0.00
900.0	12.00	322.93	897.1	33.3	-25.2	41.7	3.00	3.00	0.00
<b>EOB @ 13.79° Inc. / 322.93° Azm</b>									
959.8	13.79	322.93	955.4	44.0	-33.2	55.0	3.00	3.00	0.00
1,000.0	13.79	322.93	994.4	51.6	-39.0	64.6	0.00	0.00	0.00
1,100.0	13.79	322.93	1,091.5	70.6	-53.4	88.4	0.00	0.00	0.00
1,200.0	13.79	322.93	1,188.6	89.6	-67.7	112.2	0.00	0.00	0.00
1,300.0	13.79	322.93	1,285.8	108.7	-82.1	136.0	0.00	0.00	0.00
1,400.0	13.79	322.93	1,382.9	127.7	-96.5	159.8	0.00	0.00	0.00
1,500.0	13.79	322.93	1,480.0	146.7	-110.8	183.7	0.00	0.00	0.00
1,600.0	13.79	322.93	1,577.1	165.7	-125.2	207.5	0.00	0.00	0.00
1,700.0	13.79	322.93	1,674.2	184.8	-139.6	231.3	0.00	0.00	0.00
1,800.0	13.79	322.93	1,771.3	203.8	-154.0	255.1	0.00	0.00	0.00
1,900.0	13.79	322.93	1,868.5	222.8	-168.3	278.9	0.00	0.00	0.00
2,000.0	13.79	322.93	1,965.6	241.8	-182.7	302.7	0.00	0.00	0.00
2,100.0	13.79	322.93	2,062.7	260.9	-197.1	326.5	0.00	0.00	0.00
2,200.0	13.79	322.93	2,159.8	279.9	-211.5	350.4	0.00	0.00	0.00
2,300.0	13.79	322.93	2,256.9	298.9	-225.8	374.2	0.00	0.00	0.00
2,400.0	13.79	322.93	2,354.0	318.0	-240.2	398.0	0.00	0.00	0.00
2,500.0	13.79	322.93	2,451.1	337.0	-254.6	421.8	0.00	0.00	0.00
2,600.0	13.79	322.93	2,548.3	356.0	-269.0	445.6	0.00	0.00	0.00
2,700.0	13.79	322.93	2,645.4	375.0	-283.3	469.4	0.00	0.00	0.00
2,800.0	13.79	322.93	2,742.5	394.1	-297.7	493.2	0.00	0.00	0.00
2,900.0	13.79	322.93	2,839.6	413.1	-312.1	517.1	0.00	0.00	0.00
3,000.0	13.79	322.93	2,936.7	432.1	-326.5	540.9	0.00	0.00	0.00
3,100.0	13.79	322.93	3,033.8	451.1	-340.8	564.7	0.00	0.00	0.00
3,200.0	13.79	322.93	3,131.0	470.2	-355.2	588.5	0.00	0.00	0.00
3,300.0	13.79	322.93	3,228.1	489.2	-369.6	612.3	0.00	0.00	0.00
3,400.0	13.79	322.93	3,325.2	508.2	-383.9	636.1	0.00	0.00	0.00
3,500.0	13.79	322.93	3,422.3	527.2	-398.3	659.9	0.00	0.00	0.00
3,600.0	13.79	322.93	3,519.4	546.3	-412.7	683.8	0.00	0.00	0.00
3,700.0	13.79	322.93	3,616.5	565.3	-427.1	707.6	0.00	0.00	0.00
3,800.0	13.79	322.93	3,713.6	584.3	-441.4	731.4	0.00	0.00	0.00
3,900.0	13.79	322.93	3,810.8	603.3	-455.8	755.2	0.00	0.00	0.00
4,000.0	13.79	322.93	3,907.9	622.4	-470.2	779.0	0.00	0.00	0.00
4,100.0	13.79	322.93	4,005.0	641.4	-484.6	802.8	0.00	0.00	0.00
<b>Wasatch</b>									
4,109.3	13.79	322.93	4,014.0	643.1	-485.9	805.0	0.00	0.00	0.00
4,200.0	13.79	322.93	4,102.1	660.4	-498.9	826.6	0.00	0.00	0.00
4,300.0	13.79	322.93	4,199.2	679.4	-513.3	850.4	0.00	0.00	0.00
4,400.0	13.79	322.93	4,296.3	698.5	-527.7	874.3	0.00	0.00	0.00
4,500.0	13.79	322.93	4,393.5	717.5	-542.1	898.1	0.00	0.00	0.00
4,600.0	13.79	322.93	4,490.6	736.5	-556.4	921.9	0.00	0.00	0.00
4,700.0	13.79	322.93	4,587.7	755.5	-570.8	945.7	0.00	0.00	0.00

<b>Database:</b>	EDM 5000.1 Single User Db	<b>Local Co-ordinate Reference:</b>	Well ELU O13 FED 13B-13 496 - Slot 13B-13
<b>Company:</b>	Caerus Oil & Gas	<b>TVD Reference:</b>	RKB @ 8143.0usft (25')
<b>Project:</b>	Rio Blanco County, CO	<b>MD Reference:</b>	RKB @ 8143.0usft (25')
<b>Site:</b>	ELU O13 496 Pad	<b>North Reference:</b>	True
<b>Well:</b>	ELU O13 FED 13B-13 496	<b>Survey Calculation Method:</b>	Minimum Curvature
<b>Wellbore:</b>	Wellbore #1		
<b>Design:</b>	Design #3		

Planned Survey									
Measured Depth (usft)	Inclination (°)	Azimuth (°)	Vertical Depth (usft)	+N/-S (usft)	+E/-W (usft)	Vertical Section (usft)	Dogleg Rate (°/100usft)	Build Rate (°/100usft)	Turn Rate (°/100usft)
4,800.0	13.79	322.93	4,684.8	774.6	-585.2	969.5	0.00	0.00	0.00
4,900.0	13.79	322.93	4,781.9	793.6	-599.5	993.3	0.00	0.00	0.00
5,000.0	13.79	322.93	4,879.0	812.6	-613.9	1,017.1	0.00	0.00	0.00
5,100.0	13.79	322.93	4,976.2	831.6	-628.3	1,041.0	0.00	0.00	0.00
5,200.0	13.79	322.93	5,073.3	850.7	-642.7	1,064.8	0.00	0.00	0.00
5,300.0	13.79	322.93	5,170.4	869.7	-657.0	1,088.6	0.00	0.00	0.00
5,400.0	13.79	322.93	5,267.5	888.7	-671.4	1,112.4	0.00	0.00	0.00
5,500.0	13.79	322.93	5,364.6	907.7	-685.8	1,136.2	0.00	0.00	0.00
5,600.0	13.79	322.93	5,461.7	926.8	-700.2	1,160.0	0.00	0.00	0.00
5,700.0	13.79	322.93	5,558.8	945.8	-714.5	1,183.8	0.00	0.00	0.00
5,800.0	13.79	322.93	5,656.0	964.8	-728.9	1,207.7	0.00	0.00	0.00
5,900.0	13.79	322.93	5,753.1	983.8	-743.3	1,231.5	0.00	0.00	0.00
6,000.0	13.79	322.93	5,850.2	1,002.9	-757.7	1,255.3	0.00	0.00	0.00
6,100.0	13.79	322.93	5,947.3	1,021.9	-772.0	1,279.1	0.00	0.00	0.00
6,200.0	13.79	322.93	6,044.4	1,040.9	-786.4	1,302.9	0.00	0.00	0.00
6,300.0	13.79	322.93	6,141.5	1,059.9	-800.8	1,326.7	0.00	0.00	0.00
6,400.0	13.79	322.93	6,238.7	1,079.0	-815.1	1,350.5	0.00	0.00	0.00
6,500.0	13.79	322.93	6,335.8	1,098.0	-829.5	1,374.4	0.00	0.00	0.00
<b>Wasatch G</b>									
6,580.6	13.79	322.93	6,414.0	1,113.3	-841.1	1,393.5	0.00	0.00	0.00
6,600.0	13.79	322.93	6,432.9	1,117.0	-843.9	1,398.2	0.00	0.00	0.00
6,700.0	13.79	322.93	6,530.0	1,136.0	-858.3	1,422.0	0.00	0.00	0.00
6,800.0	13.79	322.93	6,627.1	1,155.1	-872.6	1,445.8	0.00	0.00	0.00
<b>Fort Union</b>									
6,889.5	13.79	322.93	6,714.0	1,172.1	-885.5	1,467.1	0.00	0.00	0.00
6,900.0	13.79	322.93	6,724.2	1,174.1	-887.0	1,469.6	0.00	0.00	0.00
7,000.0	13.79	322.93	6,821.3	1,193.1	-901.4	1,493.4	0.00	0.00	0.00
7,100.0	13.79	322.93	6,918.5	1,212.1	-915.8	1,517.2	0.00	0.00	0.00
7,200.0	13.79	322.93	7,015.6	1,231.2	-930.1	1,541.1	0.00	0.00	0.00
7,300.0	13.79	322.93	7,112.7	1,250.2	-944.5	1,564.9	0.00	0.00	0.00
7,400.0	13.79	322.93	7,209.8	1,269.2	-958.9	1,588.7	0.00	0.00	0.00
7,500.0	13.79	322.93	7,306.9	1,288.2	-973.3	1,612.5	0.00	0.00	0.00
7,600.0	13.79	322.93	7,404.0	1,307.3	-987.6	1,636.3	0.00	0.00	0.00
7,700.0	13.79	322.93	7,501.2	1,326.3	-1,002.0	1,660.1	0.00	0.00	0.00
7,800.0	13.79	322.93	7,598.3	1,345.3	-1,016.4	1,683.9	0.00	0.00	0.00
7,900.0	13.79	322.93	7,695.4	1,364.3	-1,030.7	1,707.8	0.00	0.00	0.00
8,000.0	13.79	322.93	7,792.5	1,383.4	-1,045.1	1,731.6	0.00	0.00	0.00
8,100.0	13.79	322.93	7,889.6	1,402.4	-1,059.5	1,755.4	0.00	0.00	0.00
8,200.0	13.79	322.93	7,986.7	1,421.4	-1,073.9	1,779.2	0.00	0.00	0.00
8,300.0	13.79	322.93	8,083.9	1,440.4	-1,088.2	1,803.0	0.00	0.00	0.00
<b>Drop 3° /100'</b>									
8,320.3	13.79	322.93	8,103.6	1,444.3	-1,091.2	1,807.9	0.00	0.00	0.00
8,400.0	11.40	322.93	8,181.3	1,458.2	-1,101.6	1,825.2	3.00	-3.00	0.00
8,500.0	8.40	322.93	8,279.8	1,471.9	-1,112.0	1,842.4	3.00	-3.00	0.00
8,600.0	5.40	322.93	8,379.1	1,481.5	-1,119.3	1,854.4	3.00	-3.00	0.00
8,700.0	2.40	322.93	8,478.9	1,486.9	-1,123.4	1,861.2	3.00	-3.00	0.00
<b>EOD @ Vertical / Build 1.5° / 100' - Ohio Creek</b>									
8,780.2	0.00	0.00	8,559.0	1,488.3	-1,124.4	1,862.9	3.00	-3.00	0.00
8,800.0	0.30	250.00	8,578.8	1,488.2	-1,124.4	1,862.9	1.50	1.50	0.00
<b>EOB @ 1.34° Inc. / 250.00° Azm</b>									
8,869.2	1.34	250.00	8,648.0	1,487.9	-1,125.3	1,863.2	1.50	1.50	0.00
8,900.0	1.34	250.00	8,678.8	1,487.7	-1,126.0	1,863.5	0.00	0.00	0.00
9,000.0	1.34	250.00	8,778.8	1,486.9	-1,128.2	1,864.3	0.00	0.00	0.00
9,100.0	1.34	250.00	8,878.8	1,486.1	-1,130.4	1,865.1	0.00	0.00	0.00

<b>Database:</b>	EDM 5000.1 Single User Db	<b>Local Co-ordinate Reference:</b>	Well ELU O13 FED 13B-13 496 - Slot 13B-13
<b>Company:</b>	Caerus Oil & Gas	<b>TVD Reference:</b>	RKB @ 8143.0usft (25')
<b>Project:</b>	Rio Blanco County, CO	<b>MD Reference:</b>	RKB @ 8143.0usft (25')
<b>Site:</b>	ELU O13 496 Pad	<b>North Reference:</b>	True
<b>Well:</b>	ELU O13 FED 13B-13 496	<b>Survey Calculation Method:</b>	Minimum Curvature
<b>Wellbore:</b>	Wellbore #1		
<b>Design:</b>	Design #3		

Planned Survey									
Measured Depth (usft)	Inclination (°)	Azimuth (°)	Vertical Depth (usft)	+N/-S (usft)	+E/-W (usft)	Vertical Section (usft)	Dogleg Rate (°/100usft)	Build Rate (°/100usft)	Turn Rate (°/100usft)
9,200.0	1.34	250.00	8,978.7	1,485.3	-1,132.6	1,865.9	0.00	0.00	0.00
9,300.0	1.34	250.00	9,078.7	1,484.5	-1,134.8	1,866.7	0.00	0.00	0.00
<b>Williams Fork</b>									
9,362.3	1.34	250.00	9,141.0	1,484.0	-1,136.1	1,867.2	0.00	0.00	0.00
9,400.0	1.34	250.00	9,178.7	1,483.7	-1,137.0	1,867.5	0.00	0.00	0.00
9,500.0	1.34	250.00	9,278.7	1,482.9	-1,139.2	1,868.2	0.00	0.00	0.00
9,600.0	1.34	250.00	9,378.6	1,482.1	-1,141.4	1,869.0	0.00	0.00	0.00
9,700.0	1.34	250.00	9,478.6	1,481.3	-1,143.5	1,869.8	0.00	0.00	0.00
9,800.0	1.34	250.00	9,578.6	1,480.5	-1,145.7	1,870.6	0.00	0.00	0.00
9,900.0	1.34	250.00	9,678.5	1,479.7	-1,147.9	1,871.4	0.00	0.00	0.00
10,000.0	1.34	250.00	9,778.5	1,478.9	-1,150.1	1,872.2	0.00	0.00	0.00
10,100.0	1.34	250.00	9,878.5	1,478.1	-1,152.3	1,873.0	0.00	0.00	0.00
10,200.0	1.34	250.00	9,978.5	1,477.3	-1,154.5	1,873.8	0.00	0.00	0.00
10,300.0	1.34	250.00	10,078.4	1,476.5	-1,156.7	1,874.6	0.00	0.00	0.00
10,400.0	1.34	250.00	10,178.4	1,475.7	-1,158.9	1,875.4	0.00	0.00	0.00
10,500.0	1.34	250.00	10,278.4	1,474.9	-1,161.1	1,876.2	0.00	0.00	0.00
10,600.0	1.34	250.00	10,378.4	1,474.1	-1,163.3	1,877.0	0.00	0.00	0.00
10,700.0	1.34	250.00	10,478.3	1,473.3	-1,165.4	1,877.8	0.00	0.00	0.00
10,800.0	1.34	250.00	10,578.3	1,472.5	-1,167.6	1,878.6	0.00	0.00	0.00
10,900.0	1.34	250.00	10,678.3	1,471.7	-1,169.8	1,879.4	0.00	0.00	0.00
11,000.0	1.34	250.00	10,778.2	1,470.9	-1,172.0	1,880.2	0.00	0.00	0.00
11,100.0	1.34	250.00	10,878.2	1,470.1	-1,174.2	1,881.0	0.00	0.00	0.00
11,200.0	1.34	250.00	10,978.2	1,469.3	-1,176.4	1,881.8	0.00	0.00	0.00
11,300.0	1.34	250.00	11,078.2	1,468.5	-1,178.6	1,882.6	0.00	0.00	0.00
11,400.0	1.34	250.00	11,178.1	1,467.7	-1,180.8	1,883.4	0.00	0.00	0.00
11,500.0	1.34	250.00	11,278.1	1,466.9	-1,183.0	1,884.2	0.00	0.00	0.00
11,600.0	1.34	250.00	11,378.1	1,466.1	-1,185.2	1,885.0	0.00	0.00	0.00
11,700.0	1.34	250.00	11,478.1	1,465.3	-1,187.3	1,885.7	0.00	0.00	0.00
11,800.0	1.34	250.00	11,578.0	1,464.5	-1,189.5	1,886.5	0.00	0.00	0.00
11,900.0	1.34	250.00	11,678.0	1,463.7	-1,191.7	1,887.3	0.00	0.00	0.00
12,000.0	1.34	250.00	11,778.0	1,462.9	-1,193.9	1,888.1	0.00	0.00	0.00
12,100.0	1.34	250.00	11,878.0	1,462.2	-1,196.1	1,888.9	0.00	0.00	0.00
<b>Cameo</b>									
12,190.1	1.34	250.00	11,968.0	1,461.4	-1,198.1	1,889.6	0.00	0.00	0.00
12,200.0	1.34	250.00	11,977.9	1,461.4	-1,198.3	1,889.7	0.00	0.00	0.00
12,300.0	1.34	250.00	12,077.9	1,460.6	-1,200.5	1,890.5	0.00	0.00	0.00
12,400.0	1.34	250.00	12,177.9	1,459.8	-1,202.7	1,891.3	0.00	0.00	0.00
12,500.0	1.34	250.00	12,277.8	1,459.0	-1,204.9	1,892.1	0.00	0.00	0.00
12,600.0	1.34	250.00	12,377.8	1,458.2	-1,207.1	1,892.9	0.00	0.00	0.00
<b>Rollins</b>									
12,615.2	1.34	250.00	12,393.0	1,458.0	-1,207.4	1,893.0	0.00	0.00	0.00
12,700.0	1.34	250.00	12,477.8	1,457.4	-1,209.2	1,893.7	0.00	0.00	0.00
12,800.0	1.34	250.00	12,577.8	1,456.6	-1,211.4	1,894.5	0.00	0.00	0.00
12,900.0	1.34	250.00	12,677.7	1,455.8	-1,213.6	1,895.3	0.00	0.00	0.00
13,000.0	1.34	250.00	12,777.7	1,455.0	-1,215.8	1,896.1	0.00	0.00	0.00
13,100.0	1.34	250.00	12,877.7	1,454.2	-1,218.0	1,896.9	0.00	0.00	0.00
<b>TD @ 13115.3' MD / 12893.0' TVD</b>									
13,115.3	1.34	250.00	12,893.0	1,454.1	-1,218.3	1,897.0	0.00	0.00	0.00

<b>Database:</b>	EDM 5000.1 Single User Db	<b>Local Co-ordinate Reference:</b>	Well ELU O13 FED 13B-13 496 - Slot 13B-13
<b>Company:</b>	Caerus Oil & Gas	<b>TVD Reference:</b>	RKB @ 8143.0usft (25')
<b>Project:</b>	Rio Blanco County, CO	<b>MD Reference:</b>	RKB @ 8143.0usft (25')
<b>Site:</b>	ELU O13 496 Pad	<b>North Reference:</b>	True
<b>Well:</b>	ELU O13 FED 13B-13 496	<b>Survey Calculation Method:</b>	Minimum Curvature
<b>Wellbore:</b>	Wellbore #1		
<b>Design:</b>	Design #3		

#### Design Targets

##### Target Name

- hit/miss target	Dip Angle (°)	Dip Dir. (°)	TVD (usft)	+N/-S (usft)	+E/-W (usft)	Northing (usft)	Easting (usft)	Latitude	Longitude
- Shape									
OHCR - 13B-13	0.00	0.00	8,559.0	1,488.3	-1,124.4	14,430,846.31	2,450,865.82	39.702791	-108.118820
- plan hits target center									
- Point									
PBHL - 13B-13	0.00	0.00	12,893.0	1,454.1	-1,218.3	14,430,809.10	2,450,773.00	39.702697	-108.119154
- plan hits target center									
- Ellipse (radii L100.0 W50.0 on 250.00 azi)									

#### Formations

Measured Depth (usft)	Vertical Depth (usft)	Name	Lithology	Dip (°)	Dip Direction (°)
4,109.3	4,014.0	Wasatch			
6,580.6	6,414.0	Wasatch G			
6,889.5	6,714.0	Fort Union			
8,780.2	8,559.0	Ohio Creek			
9,362.3	9,141.0	Williams Fork			
12,190.1	11,968.0	Cameo			
12,615.2	12,393.0	Rollins			

#### Plan Annotations

Measured Depth (usft)	Vertical Depth (usft)	Local Coordinates		Comment
		+N/-S (usft)	+E/-W (usft)	
500.0	500.0	0.0	0.0	Build 3° / 100'
959.8	955.4	44.0	-33.2	EOB @ 13.79° Inc. / 322.93° Azm
8,320.3	8,103.6	1,444.3	-1,091.2	Drop 3° / 100'
8,780.2	8,559.0	1,488.3	-1,124.4	EOD @ Vertical / Build 1.5° / 100'
8,869.2	8,648.0	1,487.9	-1,125.3	EOB @ 1.34° Inc. / 250.00° Azm
13,115.3	12,893.0	1,454.1	-1,218.3	TD @ 13115.3' MD / 12893.0' TVD