

Crestone Peak Resources Operating LLC, Cottonwood
Creek/Rush 4-65 28-27
005-07461 to 68
Inspection #706700164
12/20/2022
Routine Field Inspection



Colorado Oil and Gas Conservation Commission
39.67572, -104.67841, 5649.6ft, 171°
12/20/2022 11:36:45 AM



Colorado Oil and Gas Conservation Commission
39.67522, -104.6766, 5554.5ft, 182°
12/20/2022 11:38:08 AM



Colorado Oil and Gas Conservation Commission

39.67522, -104.67662, 5574.1ft, 213°

12/20/2022 11:38:20 AM



Colorado Oil and Gas Conservation Commission
39.67548, -104.67668, 5590.6ft, 347°
12/20/2022 11:38:49 AM



Colorado Oil and Gas Conservation Commission
39.67549, -104.67668, 5590.6ft, 111°
12/20/2022 11:39:01 AM



Colorado Oil and Gas Conservation Commission
39.675447, -104.67667, 5577.4ft, 79-
12/20/2022 11:40:10 AM



Colorado Oil and Gas Conservation Commission
39.67547, -104.67665, 5584.0ft, 279°
12/20/2022 11:40:40 AM



Cottonwood 3AH
bradenhead

Colorado Oil and Gas Conservation Commission
39.67547, -104.67664, 5580.7ft, 208°
12/20/2022 11:40:33 AM



Colorado Oil and Gas Conservation Commission
39.67554, -104.6766, 5590.6ft, 253
12/20/2022 11:40:57 AM



Colorado Oil and Gas Conservation Commission
39.67553, -104.67661, 5590.6ft, 217°
12/20/2022 11:41:08 AM



Colorado Oil and Gas Conservation Commission
39.67549, -104.67661, 5584.0ft, 207
12/20/2022 11:41:19 AM



Rush 2CH
bradenhead

Colorado Oil and Gas Conservation Commission
39.67549, -104.67661, 5584.0ft, 207°
12/20/2022 11:41:19 AM



CRESTONE PEAK
RESOURCES
303-659-7740

DANGER
NO TRESPASSING
AUTHORIZED
PERSONNEL ONLY

COTTONWOOD CREEK 2AH
SW/NW S28 T4S R65W 6TH PM
LAT/LONG: 39.675573/-104.676348
ARAPAHOE, CO

Colorado Oil and Gas Conservation Commission

39.67553, -104.67662, 5590.6ft, 253

12/20/2022 11:42:08 AM



Colorado Oil and Gas Conservation Commission
39.67559, -104.67657, 5584.0ft, 220°
12/20/2022 11:42:18 AM



Colorado Oil and Gas Conservation Commission

39.67559, -104.67658, 5584.0ft, 273°

12/20/2022 11:42:45 AM



Colorado Oil and Gas Conservation Commis

39.67559, -104.67658, 5584.0ft, 2

12/20/2022 11:42:45



Colorado Oil and Gas Conservation Commission
39.67559, -104.67656, 5584.0ft, 264
12/20/2022 11:42:31 AM



Cottonwood 2AH
bradenhead

Colorado Oil and Gas Conservation Commission
39.67559, -104.67656, 5584.0ft, 264°
12/20/2022 11:42:31 AM

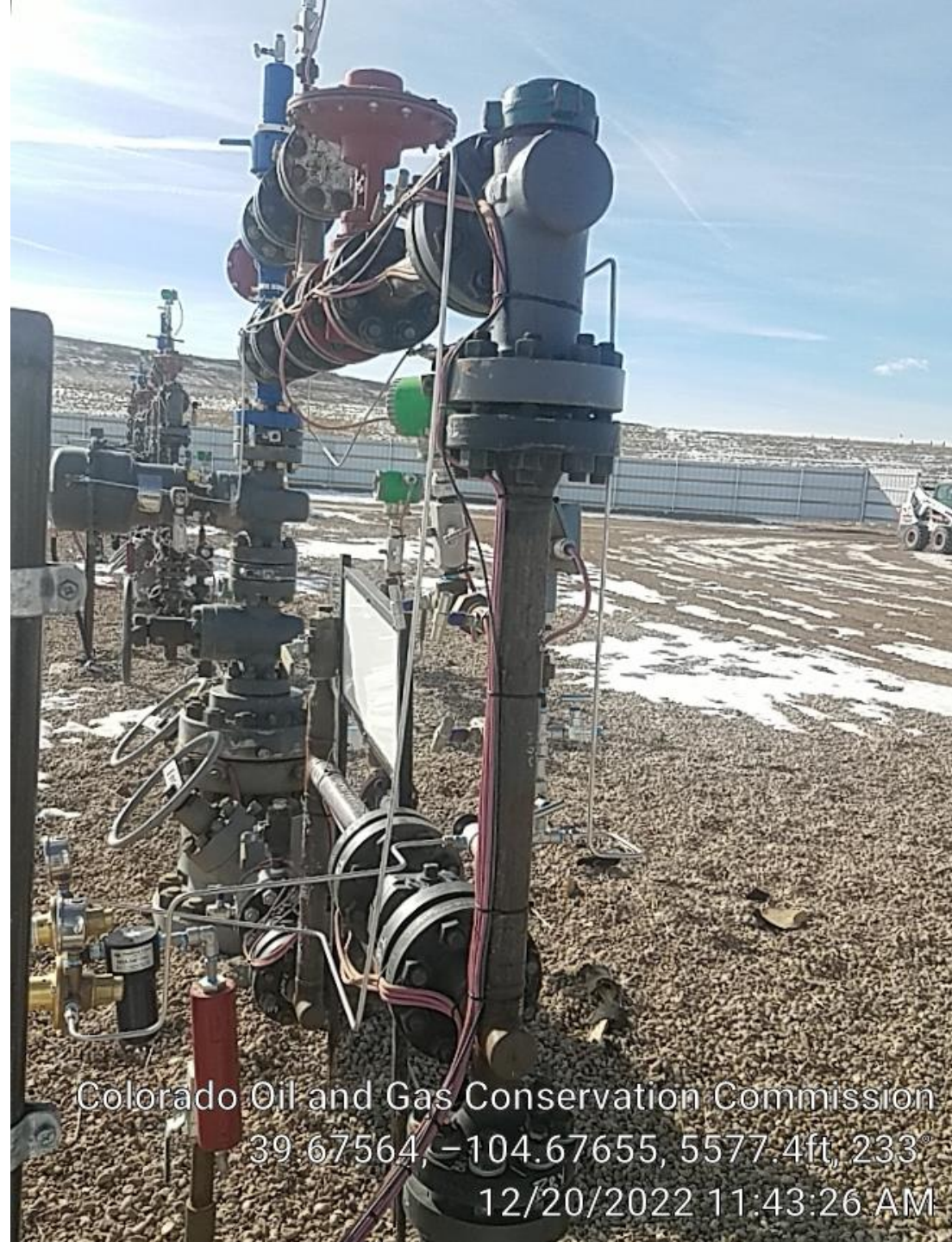


CRESTONE PEAK
RESOURCES
303-659-7740



RUSH 2AH
SW/NW S28 T4S R65W 6TH PM
LAT/LONG: 39.675573/-104.676348
ARAPAHOE, CO

Colorado Oil and Gas Conservation Commission
39.67563, -104.67657, 5574.1ft, 259°
12/20/2022 11:43:12 AM



Colorado Oil and Gas Conservation Commission
39.67564, -104.67655, 5577.4ft, 233°
12/20/2022 11:43:26 AM



Colorado Oil and Gas Conservation Commission
39.67563, -104.67656, 5574.1ft, 35°
12/20/2022 11:43:49 AM



Rush 2AH
bradenhead

Colorado Oil and Gas Conservation Commission
39.67564, -104.67657, 5574.1ft, 201°
12/20/2022 11:43:37 AM



Colorado Oil and Gas Conservation Commission
39.67563, -104.67655, 5574.1ft, 243°
12/20/2022 11:44:19 AM



Colorado Oil and Gas Conservation Commission
39.67566, -104.67656, 5577.4ft, 172°
12/20/2022 11:44:27 AM



CRESTONE PEAK
RESOURCES
303-659-7740

DANGER
NO TRESPASSING
AUTHORIZED
PERSONNEL ONLY

COTTONWOOD CREEK 1CH
SW/NW S28 T4S R65W 6TH PM
LAT/LONG: 39.675573/-104.676348
ARAPAHOE, CO

Colorado Oil and Gas Conservation Commission

39.67569, -104.67651, 5587.3ft, 348°

12/20/2022 11:44:39 AM



Colorado Oil and Gas Conservation Commission
39.6757, -104.67649, 5587.3ft, 262°
12/20/2022 11:44:52 AM



Colorado Oil and Gas Conservation Commission

39.67568, -104.67648, 5584.0ft, 79

12/20/2022 11:45:19 AM



Colorado Oil and Gas Conservation Commission
39.67568, -104.67648, 5584.0ft, 79
12/20/2022 11:45:19 AM



Cottonwood 1CH
bradenhead

Colorado Oil and Gas Conservation Commission
39.67568, -104.67647, 5584.0ft, 93°
12/20/2022 11:45:03 AM



Colorado Oil and Gas Conservation Commission
39.67573, -104.67646, 5593.8ft, 337°
12/20/2022 11:45:37 AM



Colorado Oil and Gas Conservation Commission
39.67575, -104.67644, 5593.8ft, 30°
12/20/2022 11:45:49 AM





Colorado Oil and Gas Conservation Commission
39.67575, -104.67644, 5590.6ft, 48°
12/20/2022 11:46:01 AM



Rush 1CH
bradenhead

Colorado Oil and Gas Conservation Commission
39.67575, -104.67644, 5590.6ft, 48°
12/20/2022 11:46:01 AM

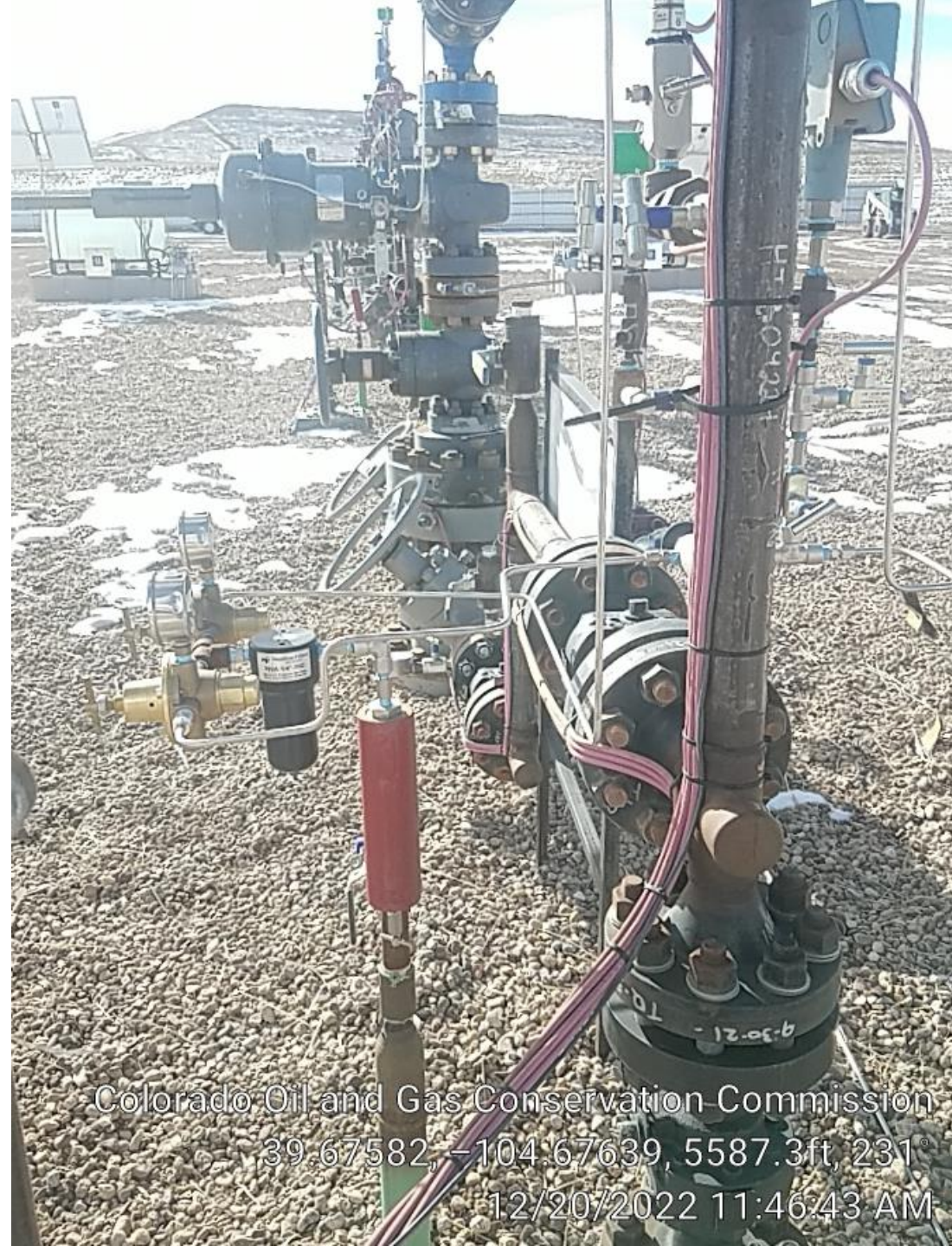


CRESTONE PEAK
RESOURCES
303-659-7740



COTTONWOOD CREEK 1AH
SW/NW S28 T4S R65W 6TH PM
LAT/LONG: 39.675573/-104.676348
ARAPAHOE, CO

Colorado Oil and Gas Conservation Commission
39.67579, -104.67641, 5587.3ft, 241°
12/20/2022 11:46:34 AM



Colorado Oil and Gas Conservation Commission
39.67582, -104.67639, 5587.3ft, 231°
12/20/2022 11:46:43 AM



Colorado Oil and Gas Conservation Commission
39.67582, -104.67639, 5587.3ft, 231°
12/20/2022 11:46:43 AM



Colorado Oil and Gas Conservation Commission
39.67582, -104.6764, 5587.3ft, 256°
12/20/2022 11:47:10 AM



Colorado Oil and Gas Conservation Commission
39.67582, -104.6764, 5587.3ft, 256°
12/20/2022 11:47:10 AM



Cottonwood 1AH
bradenhead

Colorado Oil and Gas Conservation Commission
39.67583, -104.6764, 5590.6ft, 196°
12/20/2022 11:46:55 AM



Colorado Oil and Gas Conservation Commission
39.67589, -104.67634, 5584.0ft, 221°
12/20/2022 11:47:32 AM



Colorado Oil and Gas Conservation Commission
39.6759, -104.67633, 5580.7ft, 235°
12/20/2022 11:47:42 AM



Colorado Oil and Gas Conservation Commission
39.67587, -104.67635, 5580.7ft, 263°
12/20/2022 11:48:06 AM



Rush 1AH
bradenhead

Colorado Oil and Gas Conservation Commission
39.67588, -104.67634, 5584.0ft, 209°
12/20/2022 11:47:53 AM



Colorado Oil and Gas Conservation Commission
39.67589, -104.67628, 5597.1ft, 254°
12/20/2022 11:48:19 AM



Colorado Oil and Gas Conservation Commission
39.67591, -104.67628, 5587.3ft, 263°
12/20/2022 11:48:37 AM



Colorado Oil and Gas Conservation Commission
39.67591, -104.67628, 5587.3ft, 263°
12/20/2022 11:48:37 AM



Colorado Oil and Gas Conservation Commission
39.67509, -104.6763, 5561.0ft, 87°
12/20/2022 11:52:03 AM



Colorado Oil and Gas Conservation Commission
39.67509, -104.6763, 5561.0ft, 87°
12/20/2022 11:52:03 AM



Colorado Oil and Gas Conservation Commission
39.67506, -104.67617, 5554.5ft, 91°
12/20/2022 11:52:17 AM



Colorado Oil and Gas Conservation Commission
39.67505, -104.67608, 5557.7ft, 119
12/20/2022 11:52:26 AM



Colorado Oil and Gas Conservation Commission

39.67505, -104.67608, 5557.7ft, 119°

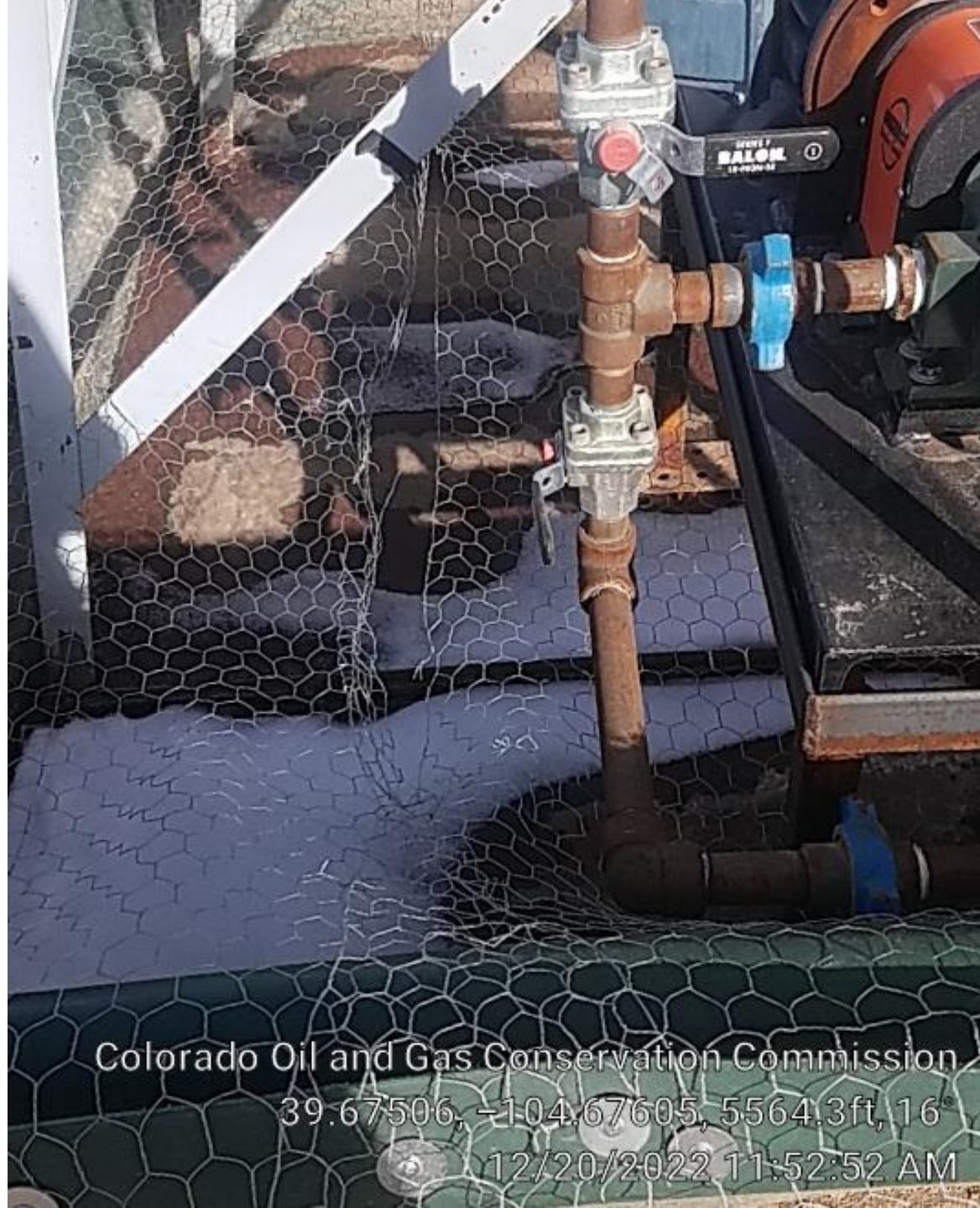
12/20/2022 11:52:26 AM

MOS
ENERGY SYS

www.mosere
20.584.983



Colorado Oil and Gas Conservation Commission
39.67506, -104.67606, 5564.3ft, 85°
12/20/2022 11:52:34 AM



Colorado Oil and Gas Conservation Commission

39.67506, -104.67605, 5564.3ft, 16°

12/20/2022 11:52:52 AM



Colorado Oil and Gas Conservation Commission
39.67506, -104.67605, 5564.3ft, 16"
12/20/2022 11:52:52 AM



Colorado Oil and Gas Conservation Commission
39.67506, -104.67606, 5564.3ft, 132
12/20/2022 11:52:41 AM



Colorado Oil and Gas Conservation Commission
39.67508, -104.67594, 5570.9ft, 54°
12/20/2022 11:53:14 AM



Are there
buried flowlines
from wells to
separators?

Colorado Oil and Gas Conservation Commission
39.67521, -104.67583, 5580.7ft, 226°
12/20/2022 11:53:50 AM



Separator are
off.

Colorado Oil and Gas Conservation Commission
39.67518, -104.6758, 5577.4ft, 237°
12/20/2022 11:54:37 AM



Colorado Oil and Gas Conservation Commission
39.67518, -104.6758, 5577.4ft, 24
12/20/2022 11:54:50 AM



Colorado Oil and Gas Conservation Commission
39.67518, -104.6758, 5577.4ft, 24°
12/20/2022 11:54:50 AM



Colorado Oil and Gas Conservation Commission
39.67511, -104.6759, 5570.9ft, 66
12/20/2022 11:55:27 AM



Colorado Oil and Gas Conservation Commission

39.6752, -104.67588, 5574.1ft, 45°

12/20/2022 11:55:44 AM



VRT/VRUs

Colorado Oil and Gas Conservation Commission

39.6753, -104.67575, 5577.4ft, 76°

12/20/2022 11:56:03 AM



Colorado Oil and Gas Conservation Commission
39.6753, -104.67559, 5597.1ft, 3°
12/20/2022 11:56:41 AM



Colorado Oil and Gas Conservation Commission

39.6753, -104.67559, 5600.4ft, 357

12/20/2022 11:56:58 AM



Colorado Oil and Gas Conservation Commission

39.67542, -104.67535, 5620.1ft, 323°

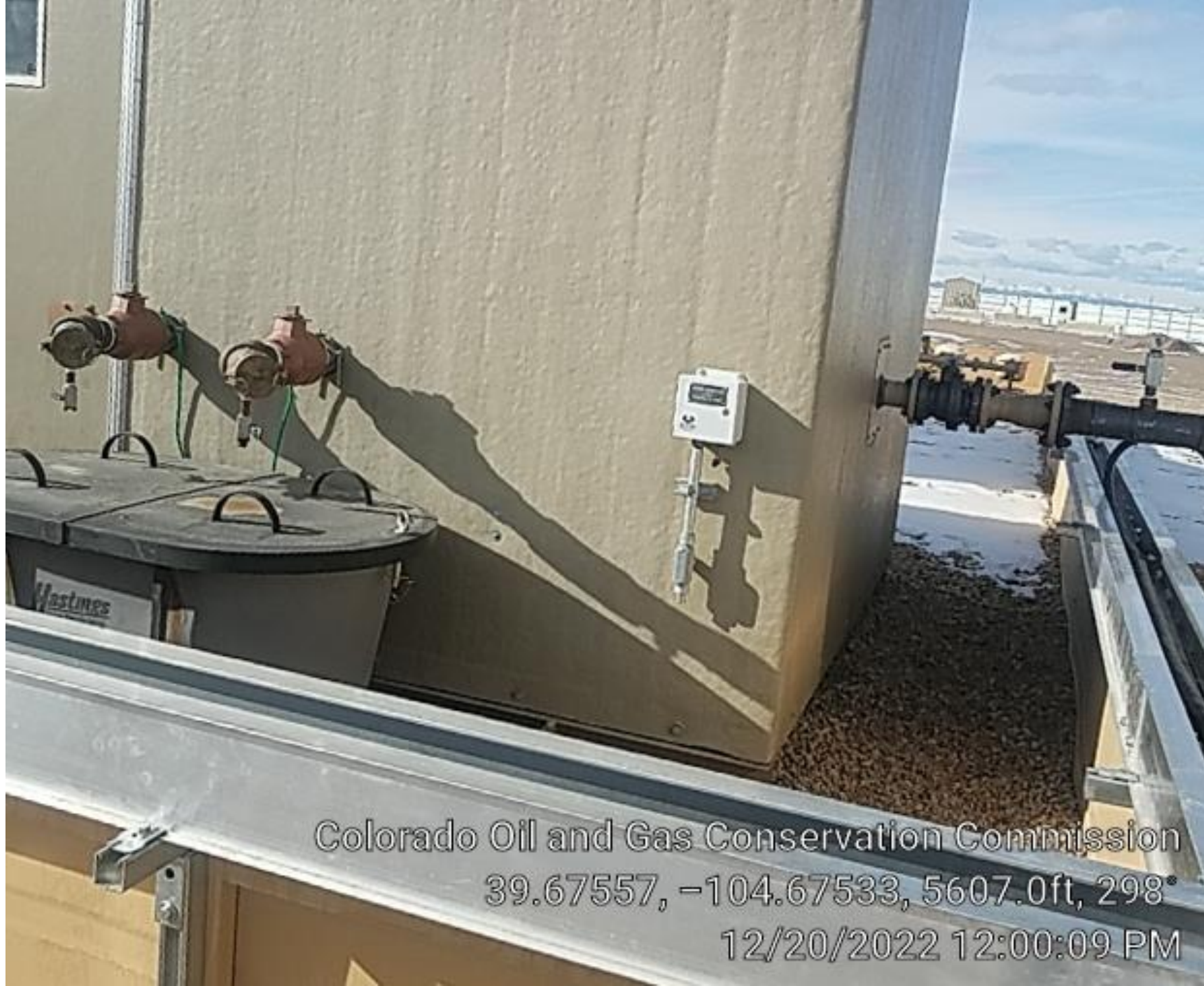
12/20/2022 11:59:39 AM



Colorado Oil and Gas Conservation Commission

39.67542, -104.67535, 5620.1ft, 323°

12/20/2022 11:59:39 AM



Label
container

Colorado Oil and Gas Conservation Commission
39.67557, -104.67533, 5607.0ft, 298°
12/20/2022 12:00:09 PM



Colorado Oil and Gas Conservation Commission
39.67562, -104.6754, 5607.0ft, 225°
12/20/2022 12:00:36 PM



Colorado Oil and Gas Conservation Commission

39.67557, -104.67558, 5607.0ft, 129°

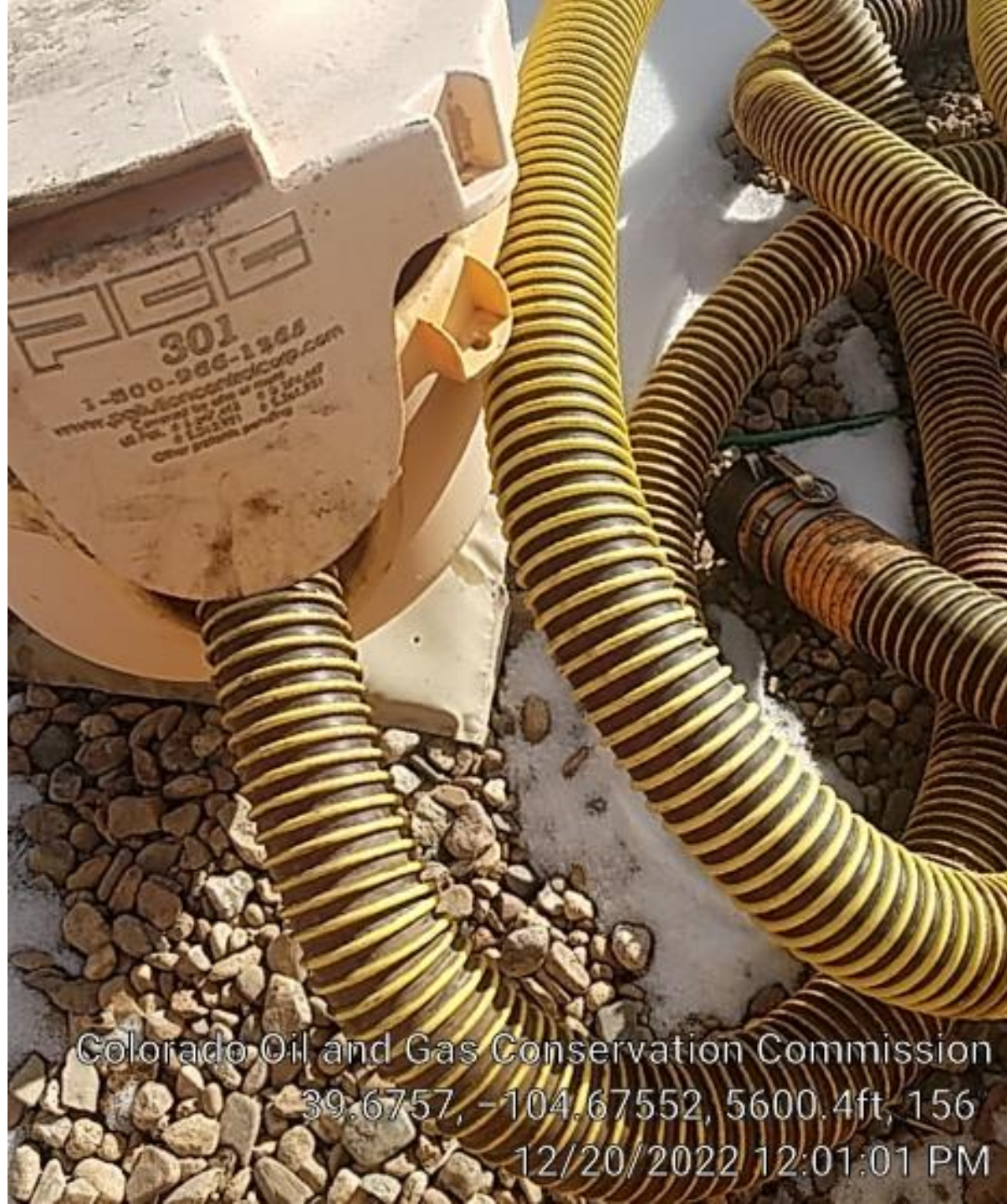
12/20/2022 12:01:42 PM



Colorado Oil and Gas Conservation Commission

39.67571, -104.67551, 5597 ft, 169

12/20/2022 12:00:51 PM



FEF
301
1-800-966-1266
www.pulsarcontrol.com
Control by wire or pump
US Pat. # 5,151,171 # 5,151,171
Other patents pending

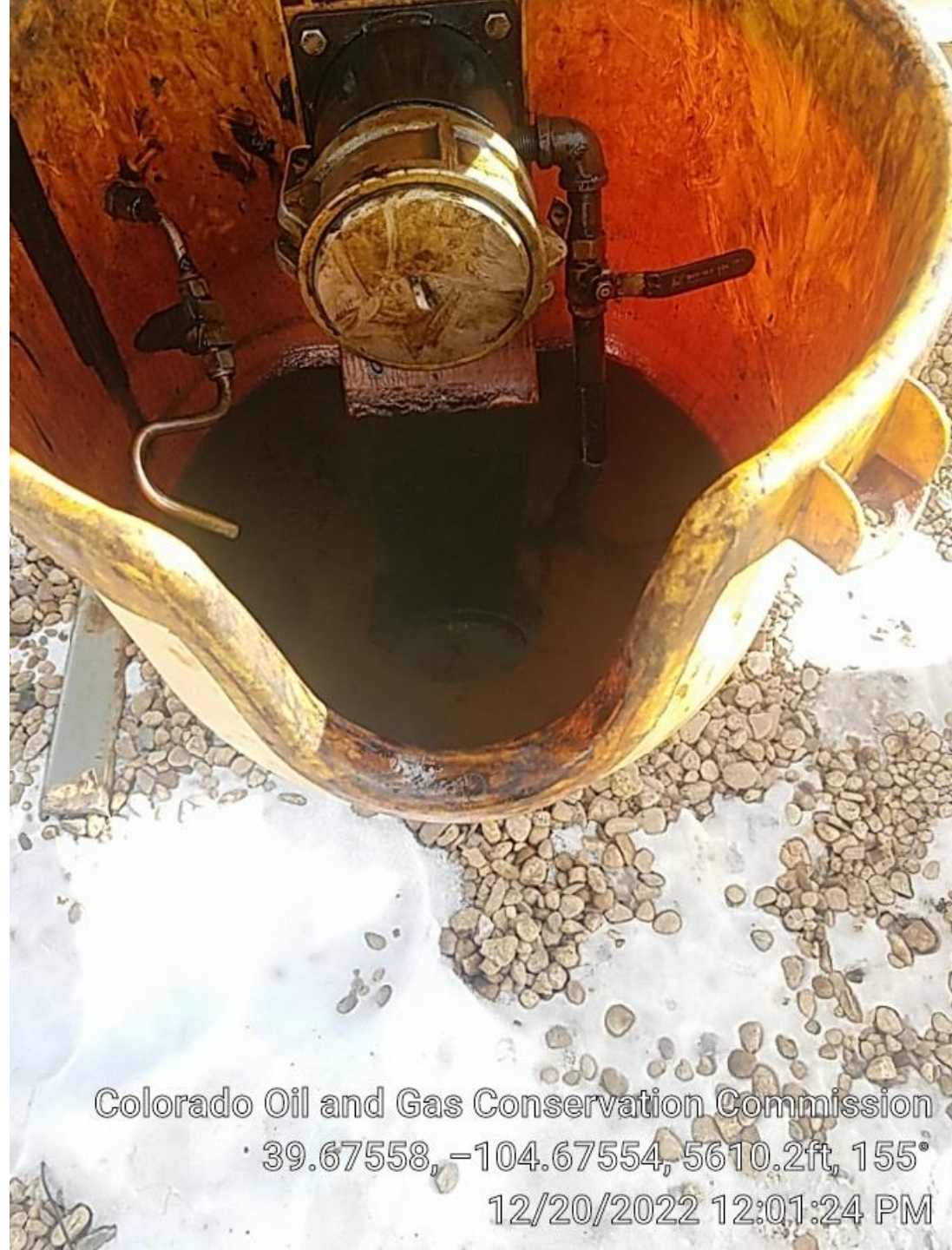
Colorado Oil and Gas Conservation Commission
39.6757, -104.67552, 5600.4ft, 156
12/20/2022 12:01:01 PM



Colorado Oil and Gas Conservation Commission

39.67558, -104.67554, 5610.2ft, 155°

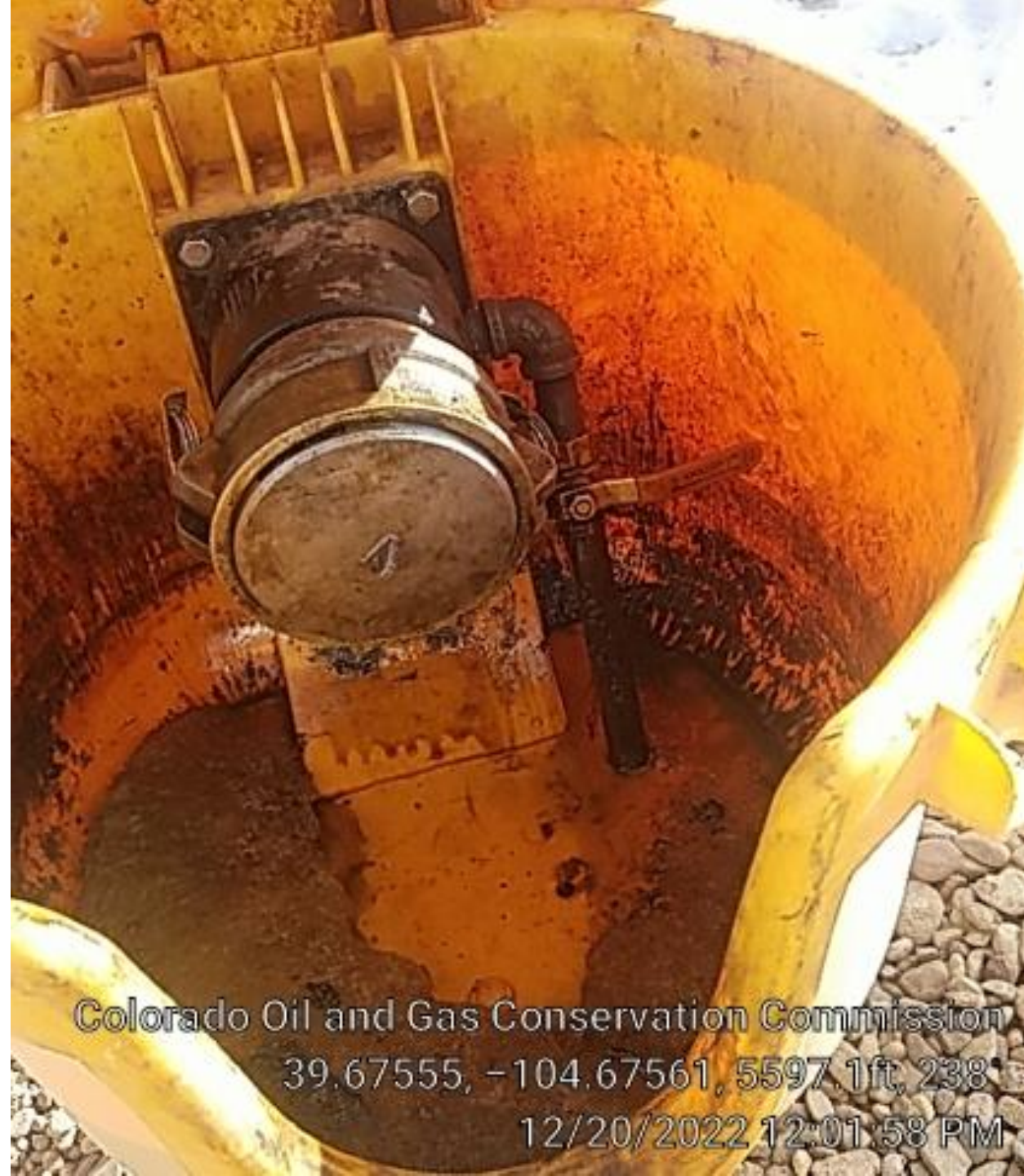
12/20/2022 12:01:24 PM



Colorado Oil and Gas Conservation Commission
· 39.67558, -104.67554, 5610.2ft, 155°
12/20/2022 12:01:24 PM



Colorado Oil and Gas Conservation Commission
39.67558, -104.67554, 5610.2ft, 155°
12/20/2022 12:01:24 PM



Colorado Oil and Gas Conservation Commission

39.67555, -104.67561, 5597.1ft, 238'

12/20/2022 12:01:58 PM



Colorado Oil and Gas Conservation Commission
39.6753, -104.67571, 5584.0ft, 132°
12/20/2022 11:56:11 AM



Colorado Oil and Gas Conservation Commission

39.6753, -104.67559, 5600.4ft, 11°

12/20/2022 11:56:51 AM



Colorado Oil and Gas Conservation Commission

39.67529, -104.67558, 5603.7ft, 257°

12/20/2022 11:57:09 AM



Colorado Oil and Gas Conservation Commission
39.67525, -104.67557, 5610.2ft, 33°
12/20/2022 11:57:29 AM



Colorado Oil and Gas Conservation Commission
39.67525, -104.67557, 5610.2ft, 33°
12/20/2022 11:57:29 AM



Colorado Oil and Gas Conservation Commission
39.67521, -104.67543, 5597.1ft, 52°
12/20/2022 11:57:39 AM



Colorado Oil and Gas Conservation Commission
39.67523, -104.67537, 5620.1ft, 304°
12/20/2022 11:58:47 AM



Colorado Oil and Gas Conservation Commission
39.67526, -104.67536, 5623.4ft, 289°
12/20/2022 11:58:55 AM



Pigging
station

Colorado Oil and Gas Conservation Commission
39.67526, -104.67536, 5623.4ft, 289°
12/20/2022 11:58:55 AM



Colorado Oil and Gas Conservation Commission
39.67574, -104.67758, 5577.4ft, 172°
12/20/2022 12:04:15 PM