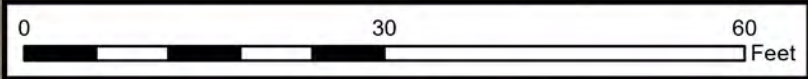


Document Path: C:\Users\Eljiah\Desktop\OneDrive - ENSOLUM, LLC\Desktop\Ensolium GIS2 - Denver\Oxy09A1417066 - Hunter, Hunter 9&16-32 O SA Facility\Project Files\09A1417066 - Hunter, Hunter 9&16-32 O SA Facility.aprx

Legend

- Soil Sample Location
- Soil Screening Location
- Background Soil Sample
- Excavation Extent
- Former Drain Line
- Former Gas Line
- Former Oil Dump
- Former Water Dump
- Former Drip Containment
- Former Metal Berm
- Former Fence
- Former Infrastructure
- Former Meter House

Notes
BBL: Barrel
AST: Above Ground Storage Tank
PWV: Produced Water Vessel



Sources: Environmental Systems Research Institute (ESRI)

Excavation Site Map (4/11/2022)

Hunter, Hunter 9&16-32 O SA Facility
Kerr-McGee Oil & Gas Onshore, LP
NESE SEC 32-T5N-R67W
Weld County, CO
Project Number: 09A1417066



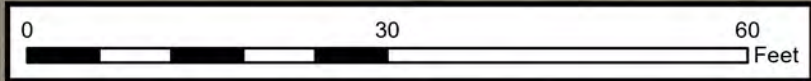
FIGURE
1A

Document Path: C:\Users\Eljiah\Desktop\OneDrive - ENSOLUM, LLC\Desktop\Ensolium GIS2 - Denver\Oxy09A1417066 - Hunter, Hunter 9&16-32 O SA Facility\Project Files\09A1417066 - Hunter, Hunter 9&16-32 O SA Facility.aprx

Legend

- Soil Sample Location
- Groundwater Sample
- Excavation Extent
- Former Drain Line
- Former Gas Line
- Former Oil Dump
- Former Water Dump
- Former Drip Containment
- Former Metal Berm
- Former Fence
- Former Infrastructure
- Former Meter House

Notes
BBL: Barrel
AST: Above Ground Storage Tank
PWV: Produced Water Vessel



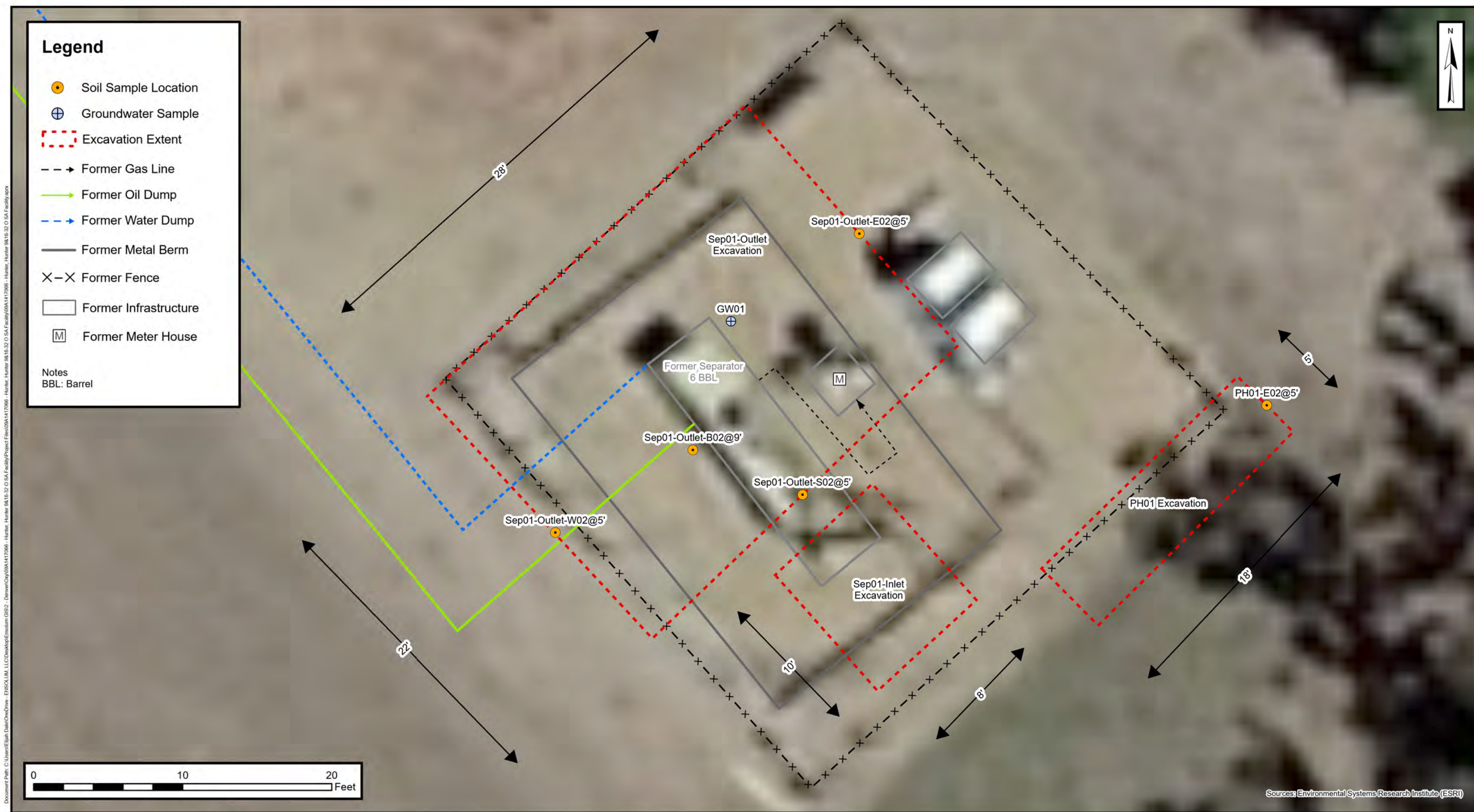
Sources: Environmental Systems Research Institute (ESRI)



Excavation Site Map (6/6/2022)


Hunter, Hunter 9&16-32 O SA Facility
Kerr-McGee Oil & Gas Onshore, LP
NESE SEC 32-T5N-R67W
Weld County, CO
Project Number: 09A1417066


FIGURE
1B





Document Path: C:\Users\Eljiah\Desktop\OneDrive - ENSOLUM, LLC\Desktop\Enrollum GIS2 - Denver\09A1417066 - Hunter, Hunter 0816-32 O SA Facility\Project Files\09A1417066 - Hunter, Hunter 0816-32 O SA Facility.aprx


Legend


 Soil Sample Location

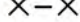
 Excavation Extent


 Former Gas Line


 Former Oil Dump

 Former Water Dump

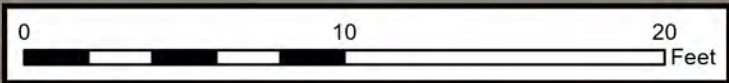
 Former Metal Berm

 Former Fence

 Former Infrastructure

 Former Meter House

Notes
BBL: Barrel



Sources: Environmental Systems Research Institute (ESRI)



Excavation Site Map (7/18/2022)

Hunter, Hunter 9&16-32 O SA Facility
Kerr-McGee Oil & Gas Onshore, LP
NESE SEC 32-T5N-R67W
Weld County, CO
Project Number: 09A1417066

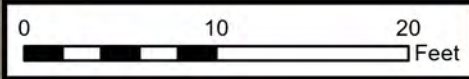
FIGURE
1D

Document Path: C:\Users\Eljiah Dale\OneDrive - ENSOLUM, LLC\Desktop\GIS2 - Denver\Oxy09A1417066 - Hunter, Hunter 9&16-32 O SA Facility\Project Files\09A1417066 - Hunter, Hunter 9&16-32 O SA Facility.aprx

Legend

- Soil Sample Location
- Excavation Extent
- Former Gas Line
- Former Oil Dump
- Former Water Dump
- Former Metal Berm
- Former Fence
- Former Infrastructure
- Former Meter House

Notes
BBL: Barrel



Sources: Environmental Systems Research Institute (ESRI)



Environmental, Engineering and
Hydrogeologic Consultants

Excavation Site Map (8/1/2022)

Hunter, Hunter 9&16-32 O SA Facility
Kerr-McGee Oil & Gas Onshore, LP
NESE SEC 32-T5N-R67W
Weld County, CO
Project Number: 09A1417066

FIGURE

1E

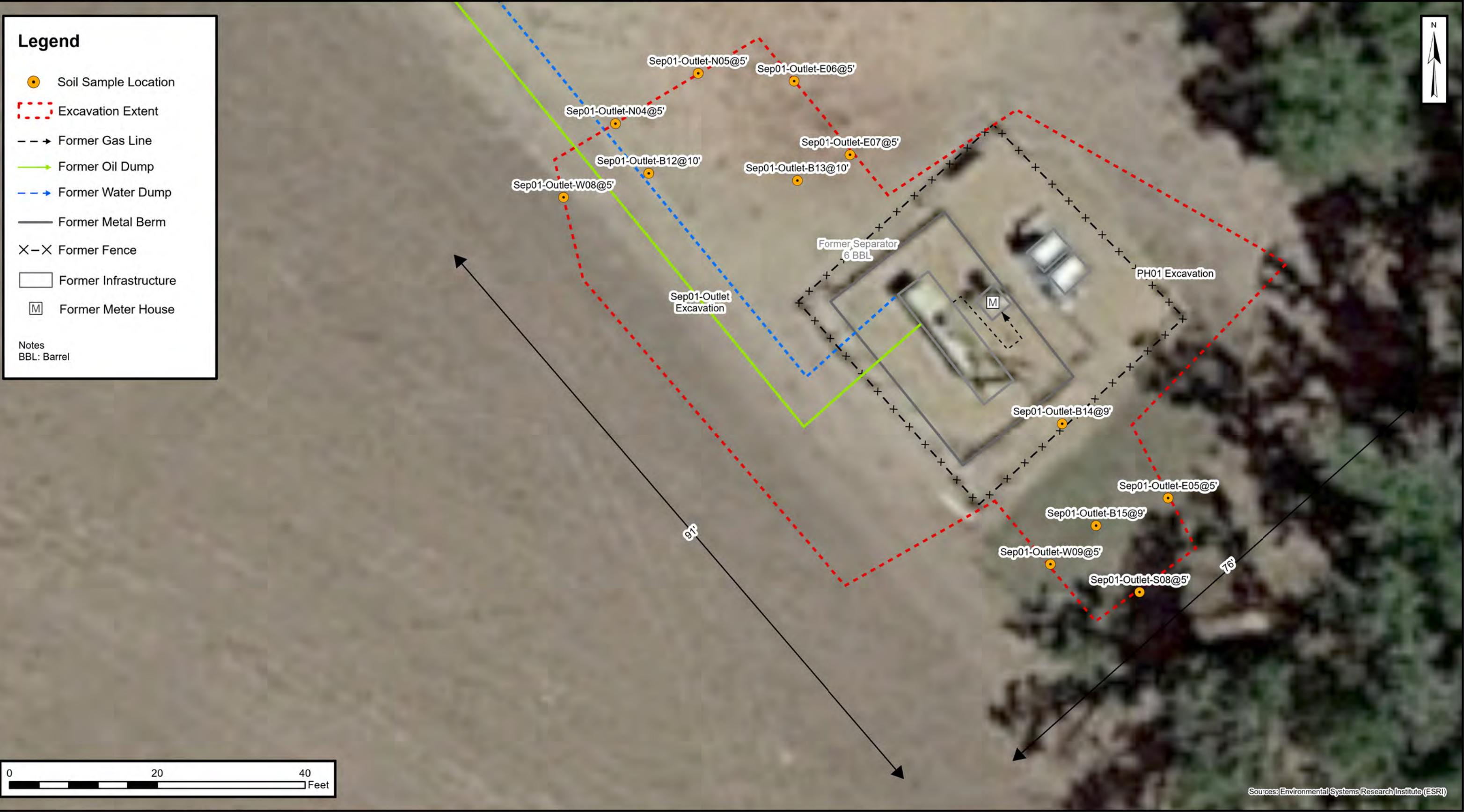
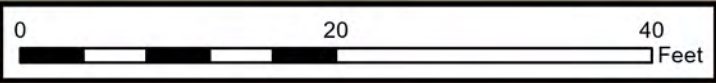


C:\Users\Eljiah.Dale\OneDrive - ENSOLUM, LLC\Desktop\Project Files\09A1417066 - Hunter, Hunter 9&16-32 O SA Facility\GIS2 - Denver\Oxy09A1417066 - Hunter, Hunter 9&16-32 O SA Facility\Map09A1417066 - Hunter, Hunter 9&16-32 O SA Facility.aprx

Legend

- Soil Sample Location
- Excavation Extent
- Former Gas Line
- Former Oil Dump
- Former Water Dump
- Former Metal Berm
- Former Fence
- Former Infrastructure
- Former Meter House

Notes
BBL: Barrel



Excavation Site Map (8/11/2022)

Hunter, Hunter 9&16-32 O SA Facility
Kerr-McGee Oil & Gas Onshore, LP
NESE SEC 32-T5N-R67W
Weld County, CO
Project Number: 09A1417066

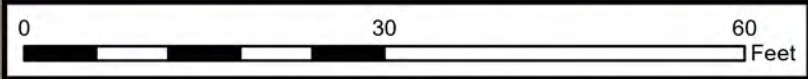
FIGURE
1G

Document Path: C:\Users\Ellyah Dalko\OneDrive - ENSOLUM, LLC\Desktop\Project Files\09A1417066 - Hunter, Hunter 9&16-32 O SA Facility\Project Files\09A1417066 - Hunter, Hunter 9&16-32 O SA Facility\09A1417066 - Hunter, Hunter 9&16-32 O SA Facility.aprx

Legend

- Soil Sample Location
- Excavation Extent
- Former Drain Line
- Former Gas Line
- Former Oil Dump
- Former Water Dump
- Former Drip Containment
- Former Metal Berm
- Former Fence
- Former Infrastructure
- Former Meter House

Notes
BBL: Barrel
AST: Above Ground Storage Tank
PWV: Produced Water Vessel



Sources: Environmental Systems Research Institute (ESRI)

Excavation Site Map (8/26/2022 - 9/1/2022)

Hunter, Hunter 9&16-32 O SA Facility
Kerr-McGee Oil & Gas Onshore, LP
NESE SEC 32-T5N-R67W
Weld County, CO
Project Number: 09A1417066



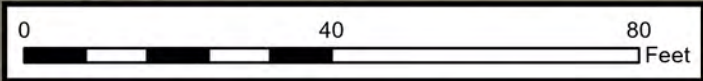
FIGURE
1H

Document Path: C:\Users\Eljiah Dalko\OneDrive - ENSOLUM, LLC\Desktop\Ensolium GIS\2 - Denver\Oxy09A1417066 - Hunter, Hunter 9&16-32 O SA Facility\Project Files\09A1417066 - Hunter, Hunter 9&16-32 O SA Facility.aprx

Legend

- Soil Sample Location
- Groundwater Sample
- Excavation Extent
- Former Drain Line
- Former Gas Line
- Former Oil Dump
- Former Water Dump
- Former Drip Containment
- Former Metal Berm
- Former Fence
- Former Infrastructure
- Former Meter House

Notes
BBL: Barrel
AST: Above Ground Storage Tank
PWV: Produced Water Vessel



Sources: Environmental Systems Research Institute (ESRI)

Excavation Site Map (9/6/2022 - 9/16/2022)

Hunter, Hunter 9&16-32 O SA Facility
Kerr-McGee Oil & Gas Onshore, LP
NESE SEC 32-T5N-R67W
Weld County, CO
Project Number: 09A1417066



FIGURE
11