
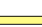






Map Key

-  Project Location
-  State Highway
-  Township Boundaries
-  Section Boundaries



112 High Street
Buffalo, Wyoming 82834
855.684.5891

www.absarokasolutions.com

GUP.CO.0586.02

Santa Fe Natural Resources, Inc.
Ridgeview 32-16-1 Tank Battery
Project Location Map
Moffat County, State of Colorado

0 0.05 0.1 0.2 0.3 0.4 Miles

Coordinate System: WGS 1984 UTM Zone 13N



Attachment A - Figure 1

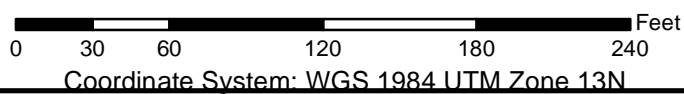

Scale: 1:10,000

Date: 12/14/2022

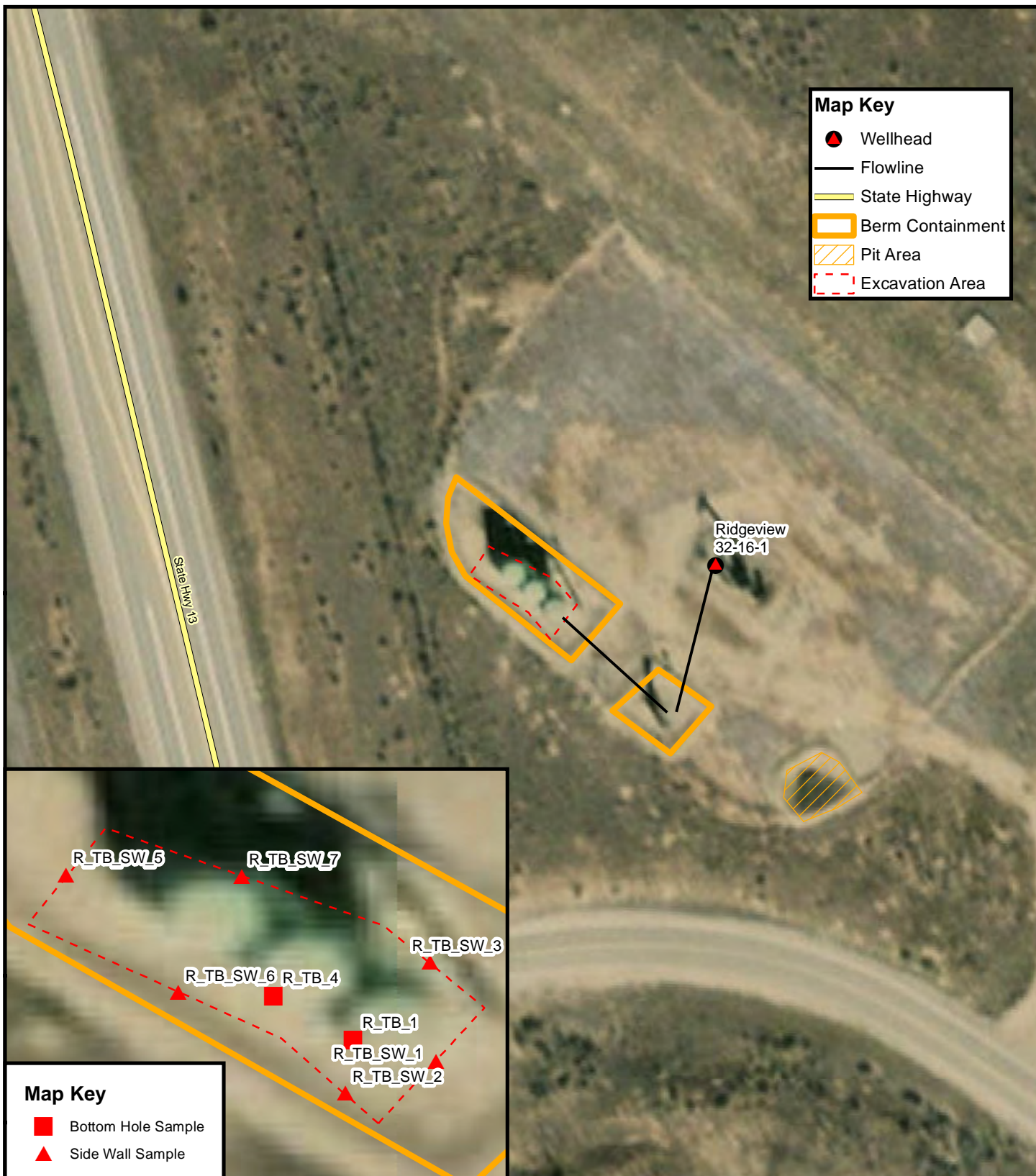



112 High Street
Buffalo, Wyoming 82834
855.684.5891
www.absarokasolutions.com
GPO.CO.0586.02








Santa Fe Natural Resources, Inc.
Ridgeview 32-16-1 - Site Map
Moffat County, State of Colorado

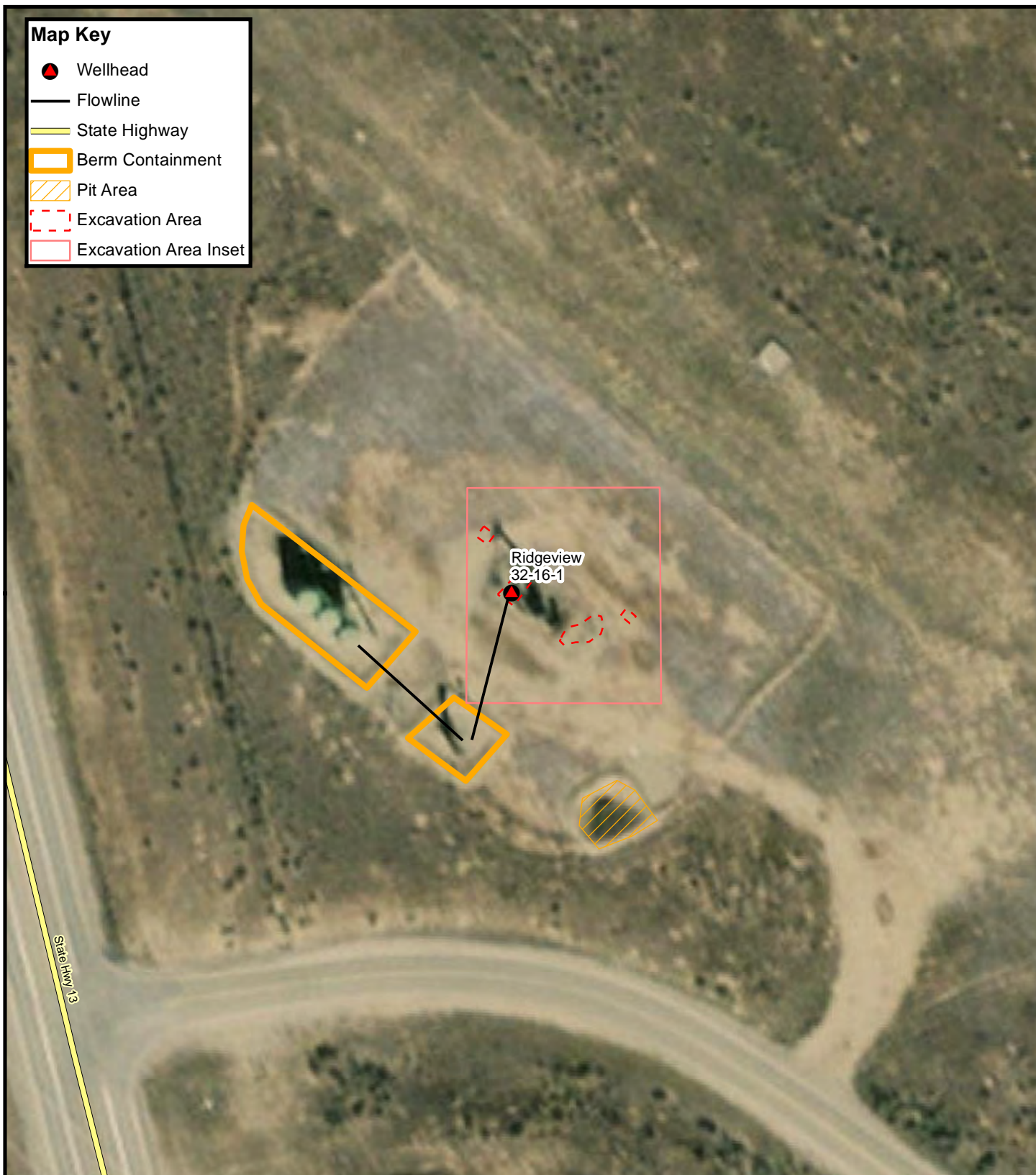



Attachment A - Figure 2
Scale: 1:900
Date: 12/14/2022



Map Key

-  Wellhead
-  Flowline
-  State Highway
-  Berm Containment
-  Pit Area
-  Excavation Area
-  Excavation Area Inset



112 High Street
Buffalo, Wyoming 82834
855.684.5891

www.absarokasolutions.com

GPO.CO.0586.02

Santa Fe Natural Resources, Inc. Ridgeview 32-16-1 - Wellhead Soil Sample Locations 7/28/2022

Moffat County, State of Colorado

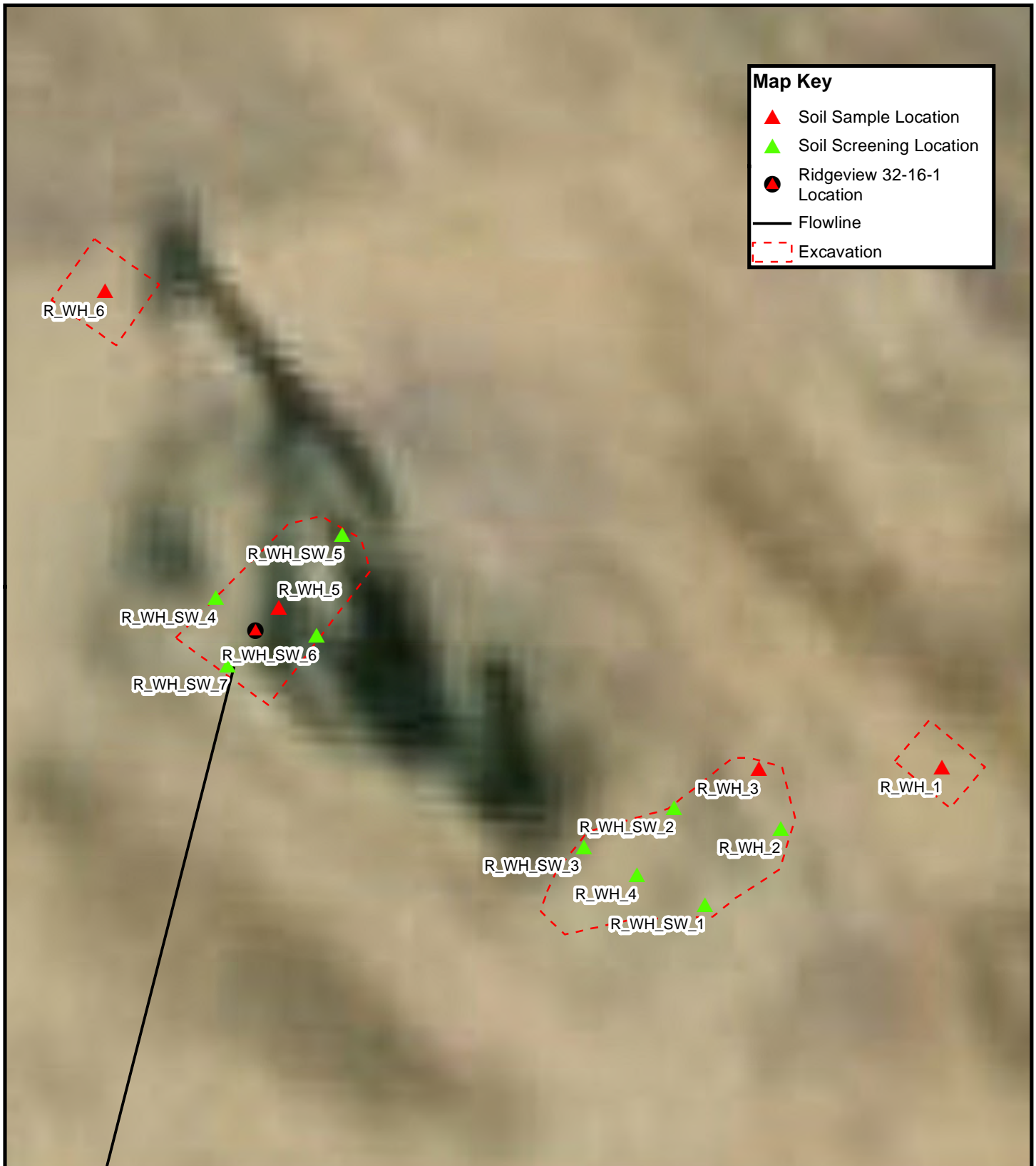
0 25 50 100 150 200 Feet
Coordinate System: WGS 1984 UTM Zone 13N



Attachment A - Figure 4


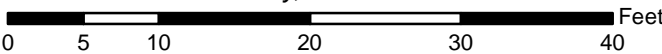


Scale: 1:900

Date: 12/14/2022



Map Key

- ▲ Soil Sample Location
- ▲ Soil Screening Location
- Ridgeview 32-16-1 Location
- Flowline
- - - Excavation

 <p>112 High Street Buffalo, Wyoming 82834 855.684.5891 www.absarokasolutions.com GPO.CO.0586.02</p>	<p>Santa Fe Natural Resources, Inc. Ridgeview 32-16-1 - Wellhead Soil Sample Locations Inset 7/28/2022 <i>Moffat County, State of Colorado</i></p> <div><p>0 5 10 20 30 40 Feet</p><p>Coordinate System: WGS 1984 UTM Zone 13N</p></div>	 <p>Attachment A - Figure 5</p> <p>Scale: 1:152</p> <p>Date: 12/14/2022</p>
---	---	--