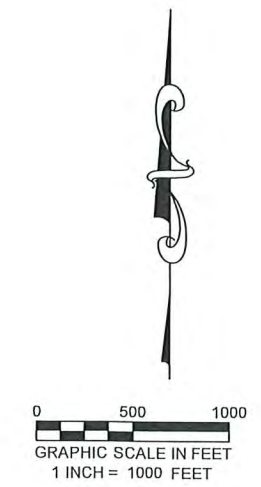
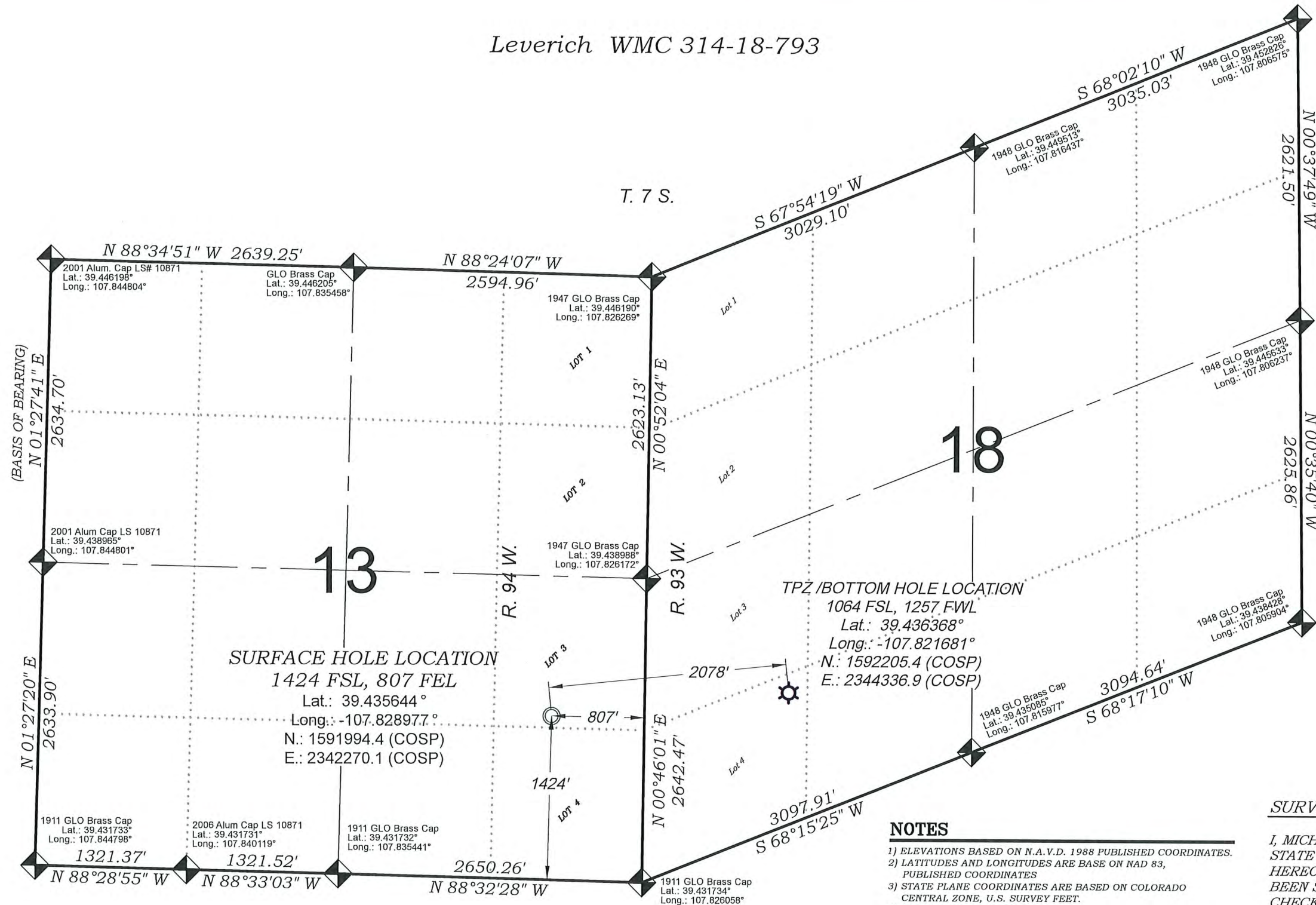


Leverich WMC 314-18-793



- LEGEND -**
- FIELD LOCATED SECTION MONUMENTS AS DESCRIBED
  - FIELD SURVEYED WELL LOCATION
  - CALCULATED TOP OF PRODUCTION ZONE / BOTTOM HOLE LOCATION
  - CALCULATED SECTION CORNER LOCATION

EXISTING GROUND ELEV.: 8006.3  
PROPOSED PAD ELEV.: 8007.1

SEE CONSTRUCTION LAYOUT PLAT FOR VISIBLE IMPROVEMENTS WITHIN 500' OF THIS LOCATION

**SURFACE HOLE LOCATION**  
1424 FSL, 807 FEL  
Lat.: 39.435644 °  
Long.: -107.828977 °  
N.: 1591994.4 (COSP)  
E.: 2342270.1 (COSP)

**TPZ / BOTTOM HOLE LOCATION**  
1064 FSL, 1257 FWL  
Lat.: 39.436368 °  
Long.: -107.821681 °  
N.: 1592205.4 (COSP)  
E.: 2344336.9 (COSP)

**NOTES**

- 1) ELEVATIONS BASED ON N.A.V.D. 1988 PUBLISHED COORDINATES.
- 2) LATITUDES AND LONGITUDES ARE BASE ON NAD 83, PUBLISHED COORDINATES
- 3) STATE PLANE COORDINATES ARE BASED ON COLORADO CENTRAL ZONE, U.S. SURVEY FEET.
- 4) ELEVATION MASK SET TO 15"
- 5) GPS OPERATOR J. KIRKPATRICK, OBSERVED A PDOP 2.4 ON SURVEY POINT NUMBER 1087.
- 6) SURFACE AND BOTTOM HOLE LOCATIONS ARE MEASURED 90° FROM SECTION LINES.

**REFERENCES**

- 1) 1913 EXTENSION SURVEY T. 7 S., R. 94 W., 6th P.M (GLO PLAT)
- 2) U.S.G.S. QUAD: NORTH MAMM PEAK, CO

**SURVEYORS STATEMENT**

I, MICHAEL J. LANGHORNE, A REGISTERED LAND SURVEYOR IN THE STATE OF COLORADO DO HEREBY CERTIFY THAT THE SURVEY SHOWN HEREON WAS PREPARED UNDER MY DIRECT SUPERVISION AND HAS BEEN STAKED ON THE GROUND AS SHOWN ON THE PLAT AND CHECKING THAT THIS MAP IS A TRUE REPRESENTATION THEREOF.

*Michael J. Langhorne*

MICHAEL J. LANGHORNE, COLORADO REGISTRATION NO. 36572  
FOR AND ON BEHALF OF  
BOOKCLIFF SURVEY SERVICES, INC.

136 East Third Street  
Rifle, Colorado 81650  
Ph. (970) 625-1330  
Fax (970) 625-2773

REVISED: 6/13/22

SURVEY DATE:	8/04/21
MAP DATE:	9/09/21
SCALE:	1" = 1000'
PROJECT:	TEP VALLEY

Construction Plan Prepared for:

TEP Rocky Mountain LLC

Lot 3, SECTION 13  
T. 7 S., R. 94 W. of the 6th. P.M.  
GARFIELD COUNTY, COLORADO