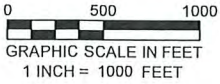
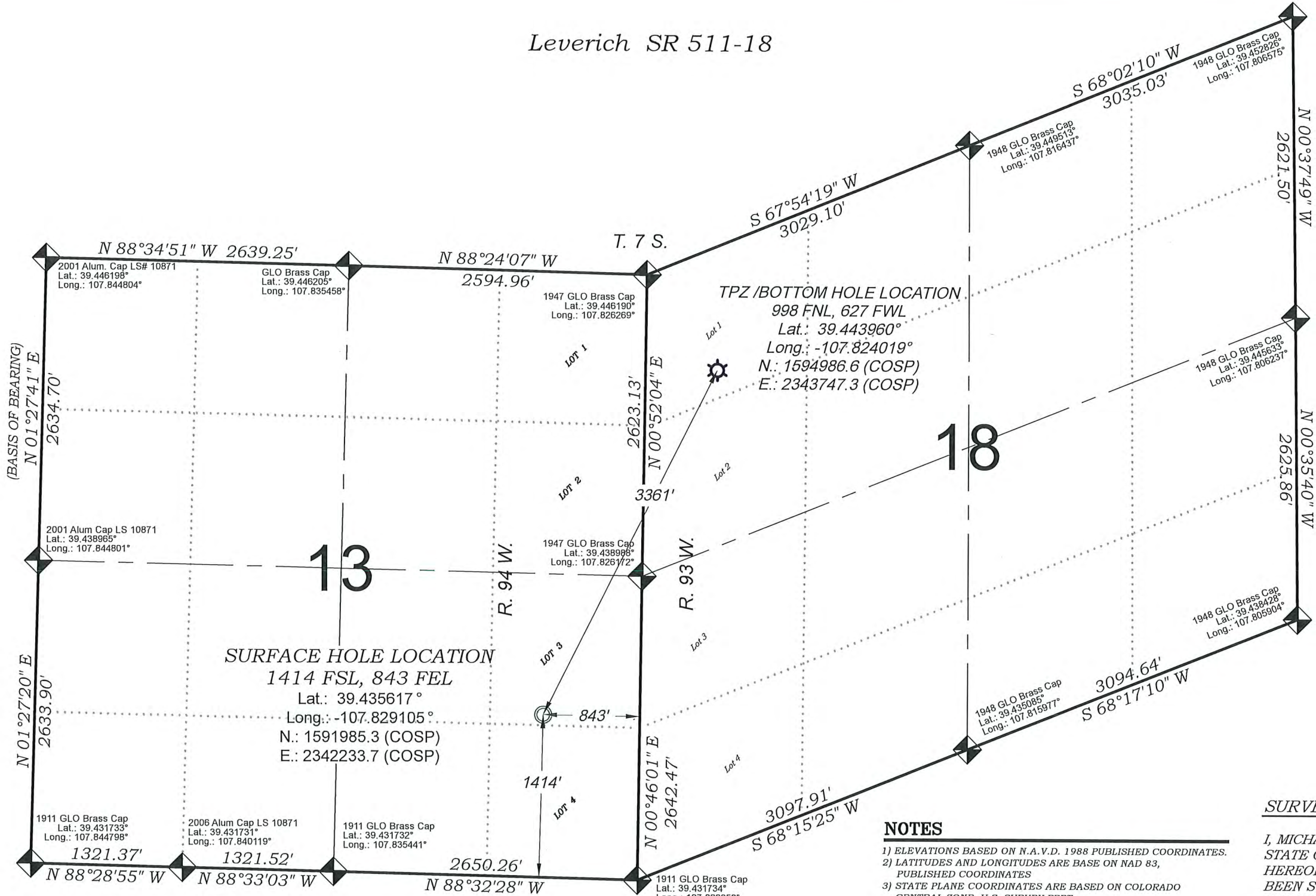


Leverich SR 511-18



- LEGEND -
- FIELD LOCATED SECTION MONUMENTS AS DESCRIBED
 - FIELD SURVEYED WELL LOCATION
 - CALCULATED TOP OF PRODUCTION ZONE / BOTTOM HOLE LOCATION
 - CALCULATED SECTION CORNER LOCATION

EXISTING GROUND ELEV.: 8006.3
PROPOSED PAD ELEV.: 8007.1

SEE CONSTRUCTION LAYOUT PLAT
FOR VISIBLE IMPROVEMENTS
WITHIN 500' OF THIS LOCATION

NOTES

- 1) ELEVATIONS BASED ON N.A.V.D. 1988 PUBLISHED COORDINATES.
- 2) LATITUDES AND LONGITUDES ARE BASE ON NAD 83, PUBLISHED COORDINATES
- 3) STATE PLANE COORDINATES ARE BASED ON COLORADO CENTRAL ZONE, U.S. SURVEY FEET.
- 4) ELEVATION MASK SET TO 15"
- 5) GPS OPERATOR J. KIRKPATRICK, OBSERVED A PDOP 2.4 ON SURVEY POINT NUMBER 1087.
- 6) SURFACE AND BOTTOM HOLE LOCATIONS ARE MEASURED 90° FROM SECTION LINES.

REFERENCES

- 1) 1913 EXTENSION SURVEY T. 7 S., R. 94 W., 6th P.M (GLO PLAT)
- 2) U.S.G.S. QUAD: NORTH MAMM PEAK, CO

SURVEYORS STATEMENT

I, MICHAEL J. LANGHORNE, A REGISTERED LAND SURVEYOR IN THE STATE OF COLORADO DO HEREBY CERTIFY THAT THE SURVEY SHOWN HEREON WAS PREPARED UNDER MY DIRECT SUPERVISION AND HAS BEEN STAKED ON THE GROUND AS SHOWN ON THE PLAT AND CHECKING THAT THIS MAP IS A TRUE REPRESENTATION THEREOF.

MICHAEL J. LANGHORNE, COLORADO REGISTRATION NO. 36572
FOR AND ON BEHALF OF
BOOKCLIFF SURVEY SERVICES, INC.

REVISED: 6/13/22

SURVEY DATE: 8/04/21

MAP DATE: 9/09/21

SCALE: 1" = 1000'

PROJECT: TEP VALLEY

136 East Third Street
Rifle, Colorado 81650
Ph. (970) 625-1330
Fax (970) 625-2773



Construction Plan Prepared for:

TERRA TEP Rocky Mountain LLC

Lot 3, SECTION 13
T. 7 S., R. 94 W. of the 6th. P.M.
GARFIELD COUNTY, COLORADO