



November 10, 2022

Mr. Austin Lee  
HSE Advisor  
Occidental Petroleum Corporation  
501 N Division Blvd  
Platteville, Colorado 80651

**Subject: Form 4 Sundry Notice – Final Reclamation  
Kerr-McGee Oil & Gas Onshore LP (Operator: 47120)  
JEFFRIES, JAMES M 32-11 #2, Location ID: 377786  
SWNE S11-T4S-R62W  
Arapahoe County, Colorado**

Dear Mr. Lee:

WSP USA (WSP) was contracted by Kerr McGee Oil & Gas Onshore LP (Kerr-McGee) to complete final reclamation inspections at plugged and abandoned (P&A) well sites located in Weld County, Colorado. The reclamation inspections were conducted in accordance with Colorado Oil and Gas Conservation Commission (COGCC) Rule 1004.

The former JEFFRIES, JAMES M 32-11 #2 well (API: 05-005-06240) was P&A'd on June 22, 1987, according to Form 6 Document Number 00506240. On November 10, WSP conducted a final reclamation inspection for the former JEFFRIES, JAMES M 32-11 #2 well pad (Location ID: 377786). The reclaimed well pad was seeded with a native prairie seed mix. The reclaimed location is situated on non-irrigated pasture and has been returned to that land use. A modified line-point intercept vegetation survey was conducted on the reclaimed well pad and on adjacent reference areas for comparison. Foliar and basal cover, along with non-vegetated, and noxious weed occurrences were documented. A total of 50 survey points along a 50-foot transect were recorded within the reclaimed disturbance area and 50 survey points along a 50-foot transect were recorded within the reference area. Undesirable species, if present, were excluded from the vegetative coverage calculation. Survey results indicate the reclaimed area has a foliar vegetative cover that is 93% of the undisturbed reference area. The associated TB location is unknown.

The inspection and vegetation survey indicate that final reclamation has been achieved in compliance with COGCC Rule 1004, which applies to the reclamation of non-crop lands. WSP personnel located the P&A wellhead location using a handheld Trimble (R1) Global Positioning System (GPS) unit and latitude and longitude coordinates obtained from the COGCC online database. A general site location map is included as Figure 1; and the Site Map displaying the location of the reclaimed site on aerial imagery is included as Figure 2; and a vegetative analysis by conducting an Line Point Intercept is included as Figure 3. Photographs of the P&A location were taken facing each cardinal direction from the P&A wellhead location. The photographic log is included as Attachment 1.

Based on the successful reclamation of the JEFFRIES, JAMES M 32-11 #2 site, a Form 4 Sundry Notice requesting final reclamation status has been prepared for the submittal to the COGCC. This letter will be included as an attachment to the electronic Form 4 submittal.

WSP USA  
4600 WEST 60TH AVENUE  
ARVADA CO 80003

Tel.: 303-433-9788  
wsp.com



If you have any questions or need additional information, please do not hesitate to contact us.

Kind regards,

A handwritten signature in black ink, appearing to read 'Tanna Lyon'.

Tanna Lyon,  
Lead Consultant, Environmental Scientist

A handwritten signature in black ink, appearing to read 'Stacey Baum'.

Stacey Baum,  
Associate Consultant, Biologist

Attachments:

Figure 1	Site Location Map
Figure 2	Site Map
Figure 3	Vegetative Field Data - Line Point Intercept
Enclosure A	Photographic Log

## FIGURES

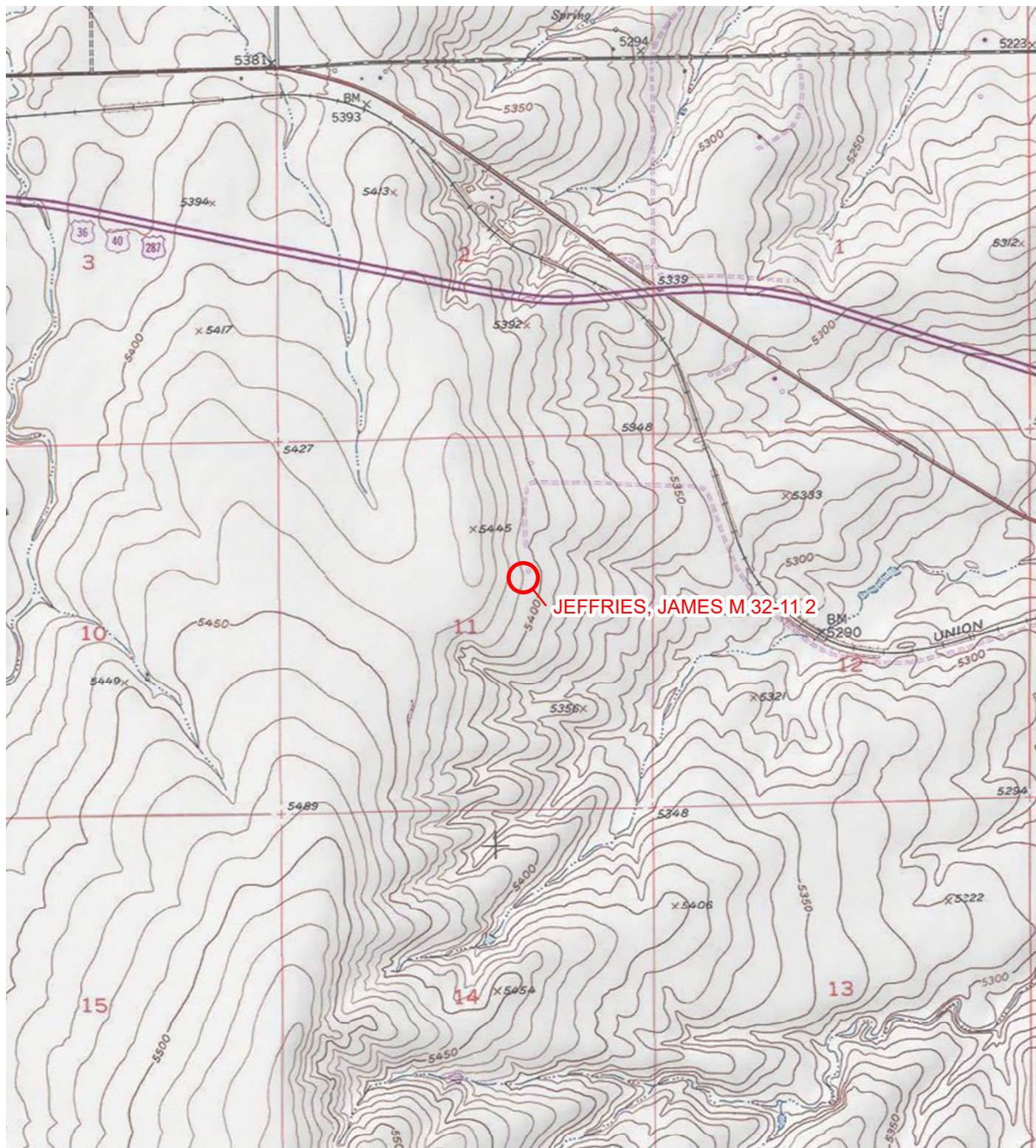
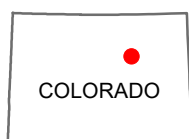
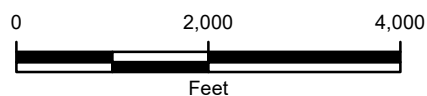


IMAGE COURTESY OF ESRI/USGS

# LEGEND

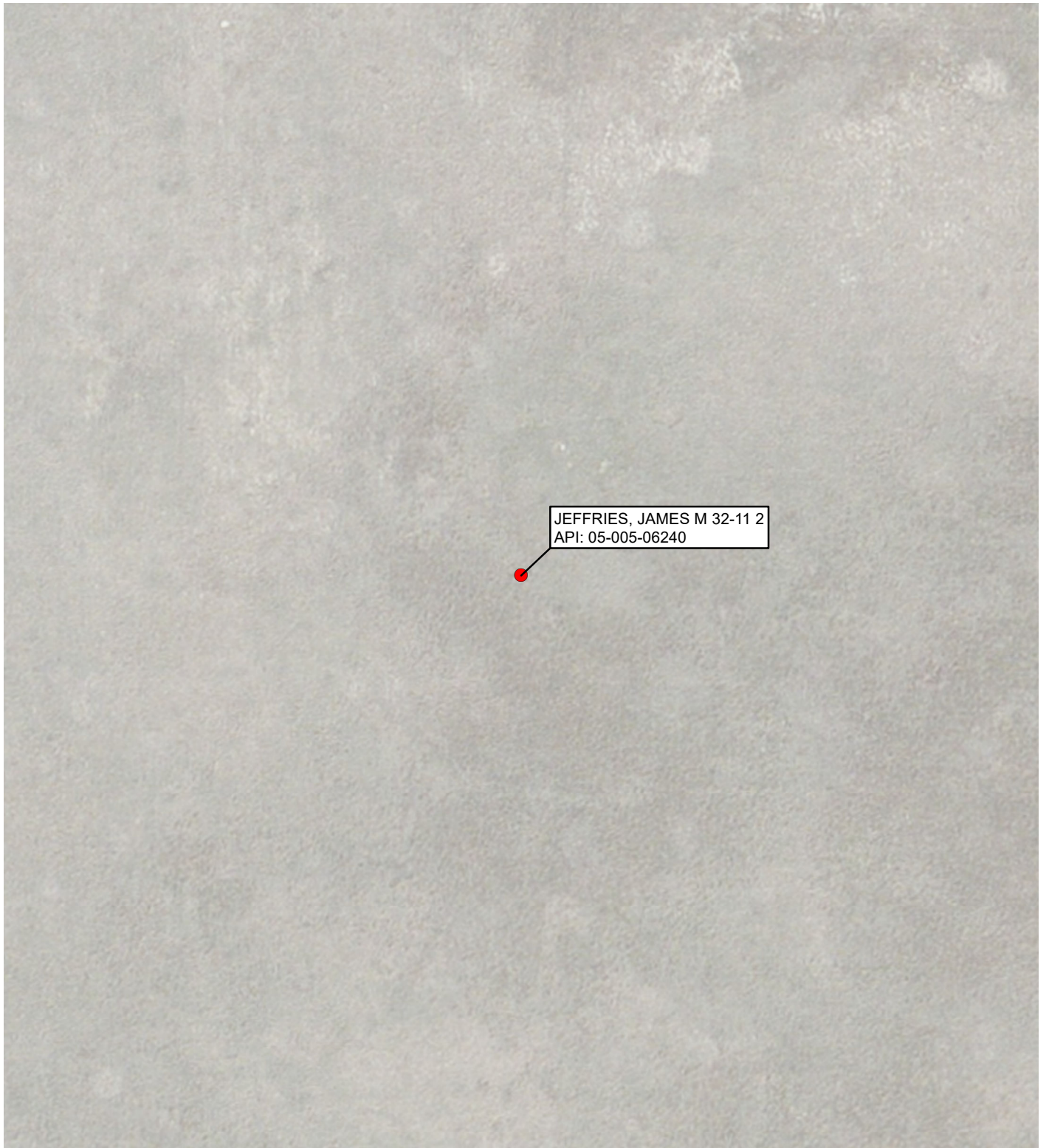
 SITE LOCATION



**FIGURE 1**  
**SITE LOCATION MAP**  
**JEFFRIES, JAMES M 32-11 2**  
**SWNE SEC 11-T4S R620W**  
**ARAPAHOE COUNTY, COLORADO**  
**KERR-MCGEE OIL & GAS ONSHORE, LP**



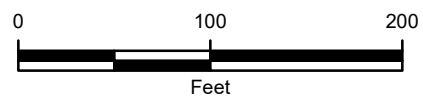




**LEGEND**

- PLUGGED AND ABANDONED WELL  
(JEFFRIES, JAMES M 32-11 2)

IMAGE COURTESY OF ESRI



**FIGURE 2**  
**SITE MAP**  
**JEFFRIES, JAMES M 32-11 2**  
**SWNE SEC 11-T4S R620W**  
**ARAPAHOE COUNTY, COLORADO**  
**KERR-MCGEE OIL & GAS ONSHORE, LP**





need 44.8%  
veg onsite to pass

Jeffries, James M 32-11 #2

onsite  
48%

# Line-point Intercept Data Form

Page 1 of 2

Shaded cells for calculations

Plot: \_\_\_\_\_ Line #: \_\_\_\_\_ Observer: S Baum Recorder: S Baum

Direction: E to W Date: 10/18/22 Intercept (Point) Spacing Interval = \_\_\_\_\_ cm ( \_\_\_\_\_ in)

Pt.	Top layer	Lower layers			Soil surface	Pt.	Top layer	Lower layers			Soil surface
		Code 1	Code 2	Code 3				Code 1	Code 2	Code 3	
1	1					26	4	L			
2	1	2				27	1	L			
3	none				S	28	2	L			
4	1					29	none	L			
5	2	L				30	1	1			
6	2	L				31	none				S
7	4	4				32	1	1			
8	1					33	none	L			
9	1					34	1	L			
10	1					35	2	L			
11	2	2				36	1	L			
12	1					37	4	4			
13	3	3				38	1	L			
14	1					39	1	1			
15	1	L				40	2	L			
16	2	L				41	2	2			
17	1					42	1	1			
18	2	2				43	none	L			
19	1	L				44	1	L			
20	1	2				45	1	L			
21	1	L				46	none				S
22	1	L				47	1	1			
23	1	L				48	3	L			
24	4	L				49	1	L			
25	1	L				50	4	L			

% foliar cover = 14 top layer pts (1st col) x 2 = 32 %

% bare ground\* = 3 pts (w/NONE over S) x 2 = 6 %

% basal cover = 8 plant base pts (last col) x 2 = 16 %

**Top layer codes:** Species code, common name, or NONE (no cover).

**Lower layers codes:** Species code, common name, L (herbaceous litter), WL (woody litter, >5 mm (~1/4 in) diameter).

## Unknown Species Codes:

AF# = annual forb  
PF# = perennial forb  
AG# = annual graminoid  
PG# = perennial graminoid  
SH# = shrub  
TR# = tree

## Soil Surface (do not use litter):

Species Code (for basal intercept)  
R = rock fragment (>5 mm (~1/4 in) diameter)  
BR = bedrock, M = moss  
LC = visible biotic crust on soil  
S = soil without any other soil surface code  
EL = embedded litter (see page 10)  
D = duff

\*Bare ground occurs ONLY when Top layer = NONE, Lower layers are empty (no L), and Soil surface = S.

not 1 - Cheat grass  
2 - lovegrass  
3 - Side oat grama

4 - western wheat grass



80% of  
56% = 44.8%

Jeffries James m 32-11 #2

56%  
offsite  
60' E

# Line-point Intercept Data Form

Page 2 of 2

Shaded cells for calculations

Plot: \_\_\_\_\_ Line #: \_\_\_\_\_ Observer: SBawn Recorder: SBawn

Direction: E-W Date: 10/18/22 Intercept (Point) Spacing Interval = \_\_\_\_\_ cm ( \_\_\_\_\_ in)

Pt.	Top layer	Lower layers			Soil surface	Pt.	Top layer	Lower layers			Soil surface
		Code 1	Code 2	Code 3				Code 1	Code 2	Code 3	
1	2	2				26	1	L			
2	4	L				27	1	3	L		
3	1	1				28	2	L			
4	1	2				29	1	1			
5	3	L				30	1	1			
6	6	L				31	none	L			
7	1	2				32	6	L			
8	1	L				33	1	L			
9	1	1				34	4	4			
10	1	2				35	2	2			
11	3	3				36	none				S
12	4	L				37	1	L			
13	1	1				38	1	L			
14	5	L				39	1	L			
15	2	2				40	1	1			
16	6	6				41	2	L			
17	none				S	42	6	L			
18	1	1				43	none	L			
19	1	1				44	1	L			
20	1	2				45	none	L			
21	1	1				46	2	L			
22	none	L				47	1	1			
23	1	L				48	1	L			
24	2	2				49	1	L			
25	4	4				50	5	L			

% foliar cover = 19 top layer pts (1st col) x 2 = 38 %

% bare ground\* = 2 pts (w/NONE over S) x 2 = 4 %

% basal cover = 9 plant base pts (last col) x 2 = 18 %

**Top layer codes:** Species code, common name, or NONE (no cover).

**Lower layers codes:** Species code, common name, L (herbaceous litter), WL (woody litter, >5 mm (~1/4 in) diameter).

## Unknown Species Codes:

AF# = annual forb  
PF# = perennial forb  
AG# = annual graminoid  
PG# = perennial graminoid  
SH# = shrub  
TR# = tree

## Soil Surface (do not use litter):

Species Code (for basal intercept)

R = rock fragment (>5 mm (~1/4 in) diameter)  
BR = bedrock, M = moss  
LC = visible biotic crust on soil  
S = soil without any other soil surface code  
EL = embedded litter (see page 10)  
D = duff

\*Bare ground occurs ONLY when Top layer = NONE, Lower layers are empty (no L), and Soil surface = S.

12 • 1 - Cheat grass

2 - Lovegrass

3 - Smooth brome

4 - western wheatgrass

5 - Russian thistle

6 - side oat grama

## ENCLOSURE A – PHOTOGRAPHIC LOG





PHOTOGRAPHIC LOG		
KERR MCGEE	JEFFRIES, JAMES M 32-11 #2 Arapahoe, Colorado	39.718675, -104.290541


Photo No.	Date	
1	November 10, 2022	
View facing north as required in Colorado Oil and Gas Conservation Commission (COGCC) Rule 1004.		

Photo No.	Date	
2	November 10, 2022	
View facing east as required in COGCC Rule 1004.		



PHOTOGRAPHIC LOG		
KERR MCGEE	JEFFRIES, JAMES M 32-11 #2 Arapahoe, Colorado	39.718675, -104.290541



Photo No.	Date	
3	November 10, 2022	
View facing south as required in COGCC Rule 1004.		

Photo No.	Date	
4	November 10, 2022	
View facing west as required in COGCC Rule 1004.		





PHOTOGRAPHIC LOG		
KERR MCGEE	JEFFRIES, JAMES M 32-11 #2 Arapahoe, Colorado	39.718675, -104.290541

Photo No.	Date	
5	November 10, 2022	
Overall site view per COGCC Rule 1004.		