

VERDAD RESOURCES

**WATTENBERG FIELD
2N-64W-32 KIWI 2920 PAD
KIWI 2929-07H**

Wellbore #1

Plan: Design #2

Standard Planning Report

20 December, 2022

Project: WATTENBERG FIELD
Site: 2N-64W-32 KIWI 2920 PAD
Well: KIWI 2929-07H
Wellbore: Wellbore #1
Design: Design #2

VERDAD RESOURCES

CASING DETAILS

TVD	MD	Name	Size
2486.00	2587.57	9 5/8"	9-5/8

SHL
1955' FNL
2609' FEL

LP/TPZ
460' FSL
1555' FEL

BPZ
460' FNL
1565' FEL

BHL
370' FNL
1565' FEL

SECTION DETAILS

MD	Inc	Azi	TVD	+N-S	+E-W	Dleg	TFace	VSect	Target
0.00	0.00	0.00	0.00	0.00	0.00	0.00	0.00	0.00	
242.00	0.00	0.00	242.00	0.00	0.00	0.00	0.00	0.00	
1243.50	20.03	32.59	1223.22	146.00	93.33	2.00	32.59	145.24	
6263.99	20.03	32.59	5940.04	1594.82	1019.54	0.00	0.00	1586.59	
6823.06	20.03	359.54	6466.97	1771.80	1070.50	2.00	-105.58	1763.14	
6944.88	20.03	359.54	6581.43	1813.52	1070.17	0.00	0.00	1804.87	
7722.33	90.00	359.54	7000.00	2411.61	1065.34	9.00	0.00	2402.98	
12147.10	90.00	359.54	7000.00	6836.24	1029.51	0.00	0.00	6827.76	KIWI 2929-07H_BHL

WELLBORE TARGET DETAILS (LAT/LONG)

Name	TVD	Northing	Easting	Latitude	Longitude
KIWI 2929-07H_SHL	0.00	1279507.58	3258821.14	40.096934	-104.574814
KIWI 2929-07H_LP/TPZ	7000.00	1281930.27	3259861.21	40.103554	-104.571005
KIWI 2929-07H_BPZ	7000.00	1286264.21	3259780.93	40.115453	-104.571130
KIWI 2929-07H_BHL	7000.00	1286354.19	3259779.27	40.115700	-104.571133

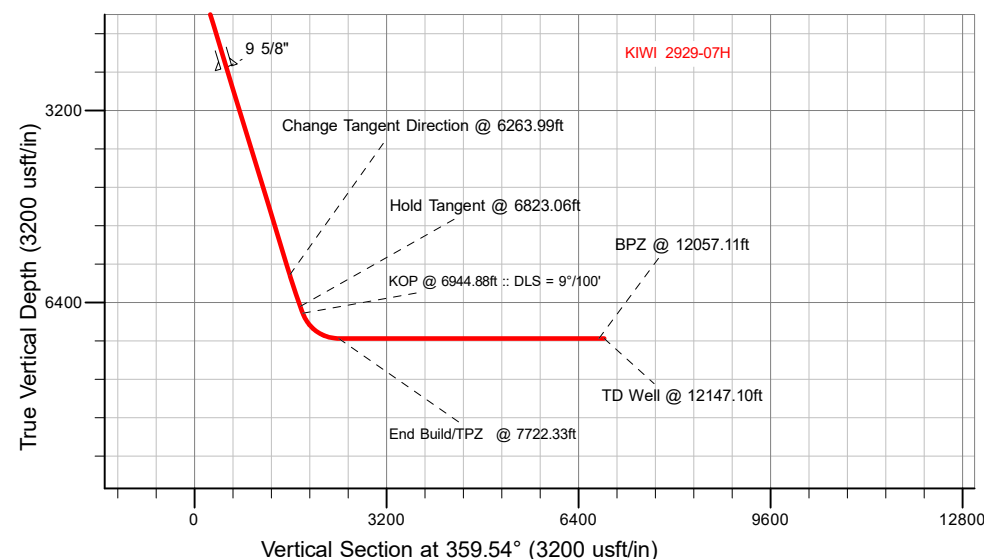
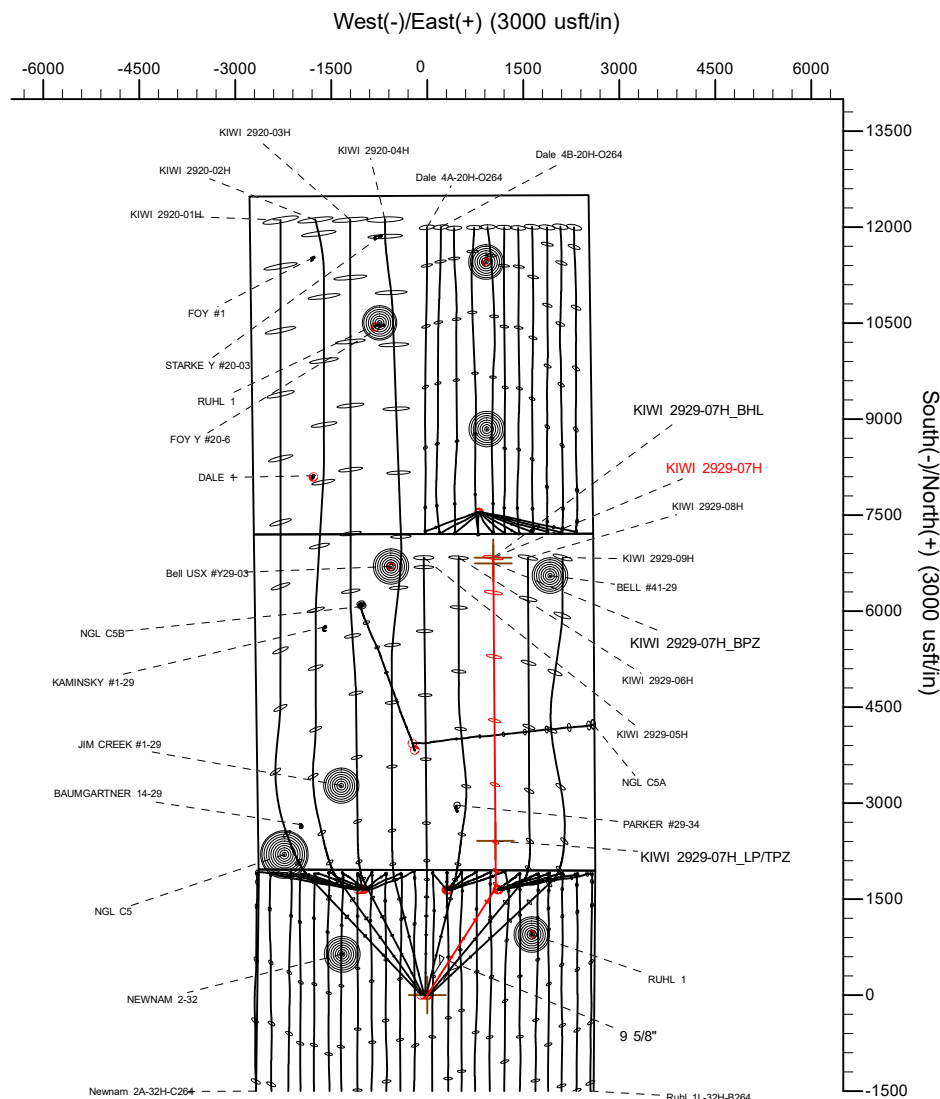
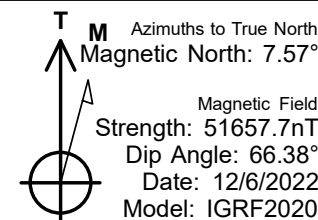
WELL DETAILS: KIWI 2929-07H

GL = 4971'

RKB = 20' @ 4991.00usft (RIG)

Plan: Design #2 (KIWI 2929-07H/Wellbore #1)

Date: 12/16/2022



Planning Report

Database:	EDM 5000.16 Single User Db	Local Co-ordinate Reference:	Well KIWI 2929-07H
Company:	VERDAD RESOURCES	TVD Reference:	RKB = 20' @ 4991.00usft (RIG)
Project:	WATTENBERG FIELD	MD Reference:	RKB = 20' @ 4991.00usft (RIG)
Site:	2N-64W-32 KIWI 2920 PAD	North Reference:	True
Well:	KIWI 2929-07H	Survey Calculation Method:	Minimum Curvature
Wellbore:	Wellbore #1		
Design:	Design #2		

Project	WATTENBERG FIELD		
Map System:	US State Plane 1983	System Datum:	Mean Sea Level
Geo Datum:	North American Datum 1983		
Map Zone:	Colorado Northern Zone		

Site		2N-64W-32 KIWI 2920 PAD			
Site Position:		Northing:	1,279,507.68 usft	Latitude:	40.096937
From:	Map	Easting:	3,258,725.14 usft	Longitude:	-104.575157
Position Uncertainty:		0.00 usft	Slot Radius:	13-3/16 "	

Well		KIWI 2929-07H				
Well Position	+N/-S	0.00 usft	Northing:	1,279,507.57 usft	Latitude:	40.096934
	+E/-W	0.00 usft	Easting:	3,258,821.14 usft	Longitude:	-104.574814
Position Uncertainty		3.28 usft	Wellhead Elevation:	usft	Ground Level:	4,971.00 usft
Grid Convergence:		0.60 °				

Wellbore	Wellbore #1				
Magnetics	Model Name	Sample Date	Declination (°)	Dip Angle (°)	Field Strength (nT)
	IGRF202013	12/6/2022	7.57	66.38	51,657.73767590

Design	Design #2				
Audit Notes:					
Version:		Phase:	PLAN	Tie On Depth:	0.00
Vertical Section:	Depth From (TVD) (usft)	+N/-S (usft)	+E/-W (usft)	Direction (°)	
	0.00	0.00	0.00	359.54	

Plan Survey Tool Program		Date	12/15/2022		
Depth From (usft)	Depth To (usft)	Survey (Wellbore)	Tool Name	Remarks	
1	0.00	2,486.00	Design #2 (Wellbore #1)	ISCWSA MWD	
				Fixed:v2:standard declination	
2	2,486.00	12,147.10	Design #2 (Wellbore #1)	ISCWSA MWD	
				Fixed:v2:standard declination	

Planning Report

Database:	EDM 5000.16 Single User Db	Local Co-ordinate Reference:	Well KIWI 2929-07H
Company:	VERDAD RESOURCES	TVD Reference:	RKB = 20' @ 4991.00usft (RIG)
Project:	WATTENBERG FIELD	MD Reference:	RKB = 20' @ 4991.00usft (RIG)
Site:	2N-64W-32 KIWI 2920 PAD	North Reference:	True
Well:	KIWI 2929-07H	Survey Calculation Method:	Minimum Curvature
Wellbore:	Wellbore #1		
Design:	Design #2		

Plan Sections										
Measured Depth (usft)	Inclination (°)	Azimuth (°)	Vertical Depth (usft)	+N/-S (usft)	+E/-W (usft)	Dogleg Rate (°/100usft)	Build Rate (°/100usft)	Turn Rate (°/100usft)	TFO (°)	Target
0.00	0.00	0.00	0.00	0.00	0.00	0.00	0.00	0.00	0.00	
242.00	0.00	0.00	242.00	0.00	0.00	0.00	0.00	0.00	0.00	
1,243.50	20.03	32.59	1,223.22	146.00	93.33	2.00	2.00	0.00	32.59	
6,263.99	20.03	32.59	5,940.04	1,594.82	1,019.54	0.00	0.00	0.00	0.00	
6,823.06	20.03	359.54	6,466.97	1,771.80	1,070.50	2.00	0.00	-5.91	-105.58	
6,944.89	20.03	359.54	6,581.43	1,813.52	1,070.17	0.00	0.00	0.00	0.00	
7,722.33	90.00	359.54	7,000.00	2,411.61	1,065.34	9.00	9.00	0.00	0.00	
12,147.11	90.00	359.54	7,000.00	6,836.25	1,029.51	0.00	0.00	0.00	0.00	KIWI 2929-07H_BHL

Planning Report

Database:	EDM 5000.16 Single User Db	Local Co-ordinate Reference:	Well KIWI 2929-07H
Company:	VERDAD RESOURCES	TVD Reference:	RKB = 20' @ 4991.00usft (RIG)
Project:	WATTENBERG FIELD	MD Reference:	RKB = 20' @ 4991.00usft (RIG)
Site:	2N-64W-32 KIWI 2920 PAD	North Reference:	True
Well:	KIWI 2929-07H	Survey Calculation Method:	Minimum Curvature
Wellbore:	Wellbore #1		
Design:	Design #2		

Planned Survey									
Measured Depth (usft)	Inclination (°)	Azimuth (°)	Vertical Depth (usft)	+N/-S (usft)	+E/-W (usft)	Vertical Section (usft)	Dogleg Rate (°/100usft)	Build Rate (°/100usft)	Turn Rate (°/100usft)
0.00	0.00	0.00	0.00	0.00	0.00	0.00	0.00	0.00	0.00
100.00	0.00	0.00	100.00	0.00	0.00	0.00	0.00	0.00	0.00
200.00	0.00	0.00	200.00	0.00	0.00	0.00	0.00	0.00	0.00
242.00	0.00	0.00	242.00	0.00	0.00	0.00	0.00	0.00	0.00
Begin Nudge @ 242.00ft									
300.00	1.16	32.59	300.00	0.49	0.32	0.49	2.00	2.00	0.00
400.00	3.16	32.59	399.92	3.67	2.35	3.65	2.00	2.00	0.00
500.00	5.16	32.59	499.65	9.78	6.25	9.73	2.00	2.00	0.00
600.00	7.16	32.59	599.07	18.82	12.03	18.73	2.00	2.00	0.00
700.00	9.16	32.59	698.05	30.78	19.68	30.62	2.00	2.00	0.00
800.00	11.16	32.59	796.48	45.64	29.18	45.41	2.00	2.00	0.00
900.00	13.16	32.59	894.23	63.39	40.52	63.06	2.00	2.00	0.00
1,000.00	15.16	32.59	991.19	84.00	53.70	83.57	2.00	2.00	0.00
1,100.00	17.16	32.59	1,087.23	107.45	68.69	106.89	2.00	2.00	0.00
1,200.00	19.16	32.59	1,182.24	133.71	85.48	133.02	2.00	2.00	0.00
1,243.50	20.03	32.59	1,223.22	146.00	93.33	145.24	2.00	2.00	0.00
Hold Tangent @ 1243.50ft									
1,300.00	20.03	32.59	1,276.31	162.30	103.76	161.46	0.00	0.00	0.00
1,400.00	20.03	32.59	1,370.26	191.16	122.21	190.17	0.00	0.00	0.00
1,500.00	20.03	32.59	1,464.21	220.02	140.65	218.88	0.00	0.00	0.00
1,600.00	20.03	32.59	1,558.16	248.88	159.10	247.59	0.00	0.00	0.00
1,700.00	20.03	32.59	1,652.11	277.74	177.55	276.30	0.00	0.00	0.00
1,800.00	20.03	32.59	1,746.06	306.59	196.00	305.01	0.00	0.00	0.00
1,900.00	20.03	32.59	1,840.02	335.45	214.45	333.72	0.00	0.00	0.00
2,000.00	20.03	32.59	1,933.97	364.31	232.90	362.43	0.00	0.00	0.00
2,100.00	20.03	32.59	2,027.92	393.17	251.34	391.14	0.00	0.00	0.00
2,200.00	20.03	32.59	2,121.87	422.03	269.79	419.85	0.00	0.00	0.00
2,300.00	20.03	32.59	2,215.82	450.88	288.24	448.56	0.00	0.00	0.00
2,400.00	20.03	32.59	2,309.77	479.74	306.69	477.27	0.00	0.00	0.00
2,500.00	20.03	32.59	2,403.72	508.60	325.14	505.97	0.00	0.00	0.00
2,587.57	20.03	32.59	2,486.00	533.87	341.30	531.12	0.00	0.00	0.00
9 5/8"									
2,600.00	20.03	32.59	2,497.67	537.46	343.59	534.68	0.00	0.00	0.00
2,700.00	20.03	32.59	2,591.63	566.32	362.04	563.39	0.00	0.00	0.00
2,800.00	20.03	32.59	2,685.58	595.18	380.48	592.10	0.00	0.00	0.00
2,900.00	20.03	32.59	2,779.53	624.03	398.93	620.81	0.00	0.00	0.00
3,000.00	20.03	32.59	2,873.48	652.89	417.38	649.52	0.00	0.00	0.00
3,100.00	20.03	32.59	2,967.43	681.75	435.83	678.23	0.00	0.00	0.00
3,200.00	20.03	32.59	3,061.38	710.61	454.28	706.94	0.00	0.00	0.00
3,300.00	20.03	32.59	3,155.33	739.47	472.73	735.65	0.00	0.00	0.00
3,400.00	20.03	32.59	3,249.29	768.33	491.18	764.36	0.00	0.00	0.00
3,500.00	20.03	32.59	3,343.24	797.18	509.62	793.07	0.00	0.00	0.00
3,600.00	20.03	32.59	3,437.19	826.04	528.07	821.78	0.00	0.00	0.00
3,700.00	20.03	32.59	3,531.14	854.90	546.52	850.48	0.00	0.00	0.00
3,800.00	20.03	32.59	3,625.09	883.76	564.97	879.19	0.00	0.00	0.00
3,900.00	20.03	32.59	3,719.04	912.62	583.42	907.90	0.00	0.00	0.00
4,000.00	20.03	32.59	3,812.99	941.47	601.87	936.61	0.00	0.00	0.00
4,100.00	20.03	32.59	3,906.95	970.33	620.32	965.32	0.00	0.00	0.00
4,200.00	20.03	32.59	4,000.90	999.19	638.76	994.03	0.00	0.00	0.00
4,300.00	20.03	32.59	4,094.85	1,028.05	657.21	1,022.74	0.00	0.00	0.00
4,400.00	20.03	32.59	4,188.80	1,056.91	675.66	1,051.45	0.00	0.00	0.00
4,500.00	20.03	32.59	4,282.75	1,085.77	694.11	1,080.16	0.00	0.00	0.00
4,600.00	20.03	32.59	4,376.70	1,114.62	712.56	1,108.87	0.00	0.00	0.00

Planning Report

Database:	EDM 5000.16 Single User Db	Local Co-ordinate Reference:	Well KIWI 2929-07H
Company:	VERDAD RESOURCES	TVD Reference:	RKB = 20' @ 4991.00usft (RIG)
Project:	WATTENBERG FIELD	MD Reference:	RKB = 20' @ 4991.00usft (RIG)
Site:	2N-64W-32 KIWI 2920 PAD	North Reference:	True
Well:	KIWI 2929-07H	Survey Calculation Method:	Minimum Curvature
Wellbore:	Wellbore #1		
Design:	Design #2		

Planned Survey									
Measured Depth (usft)	Inclination (°)	Azimuth (°)	Vertical Depth (usft)	+N/-S (usft)	+E/-W (usft)	Vertical Section (usft)	Dogleg Rate (°/100usft)	Build Rate (°/100usft)	Turn Rate (°/100usft)
4,700.00	20.03	32.59	4,470.65	1,143.48	731.01	1,137.58	0.00	0.00	0.00
4,800.00	20.03	32.59	4,564.60	1,172.34	749.45	1,166.29	0.00	0.00	0.00
4,900.00	20.03	32.59	4,658.56	1,201.20	767.90	1,195.00	0.00	0.00	0.00
5,000.00	20.03	32.59	4,752.51	1,230.06	786.35	1,223.70	0.00	0.00	0.00
5,100.00	20.03	32.59	4,846.46	1,258.92	804.80	1,252.41	0.00	0.00	0.00
5,200.00	20.03	32.59	4,940.41	1,287.77	823.25	1,281.12	0.00	0.00	0.00
5,300.00	20.03	32.59	5,034.36	1,316.63	841.70	1,309.83	0.00	0.00	0.00
5,400.00	20.03	32.59	5,128.31	1,345.49	860.15	1,338.54	0.00	0.00	0.00
5,500.00	20.03	32.59	5,222.26	1,374.35	878.59	1,367.25	0.00	0.00	0.00
5,600.00	20.03	32.59	5,316.22	1,403.21	897.04	1,395.96	0.00	0.00	0.00
5,700.00	20.03	32.59	5,410.17	1,432.06	915.49	1,424.67	0.00	0.00	0.00
5,800.00	20.03	32.59	5,504.12	1,460.92	933.94	1,453.38	0.00	0.00	0.00
5,900.00	20.03	32.59	5,598.07	1,489.78	952.39	1,482.09	0.00	0.00	0.00
6,000.00	20.03	32.59	5,692.02	1,518.64	970.84	1,510.80	0.00	0.00	0.00
6,100.00	20.03	32.59	5,785.97	1,547.50	989.29	1,539.51	0.00	0.00	0.00
6,200.00	20.03	32.59	5,879.92	1,576.36	1,007.73	1,568.21	0.00	0.00	0.00
6,263.99	20.03	32.59	5,940.04	1,594.82	1,019.54	1,586.59	0.00	0.00	0.00
Change Tangent Direction @ 6263.99ft									
6,300.00	19.85	30.55	5,973.89	1,605.28	1,025.97	1,596.99	2.00	-0.50	-5.68
6,400.00	19.47	24.71	6,068.07	1,635.05	1,041.56	1,626.63	2.00	-0.38	-5.84
6,500.00	19.28	18.70	6,162.42	1,665.83	1,053.82	1,657.32	2.00	-0.19	-6.00
6,600.00	19.30	12.65	6,256.82	1,697.60	1,062.74	1,689.01	2.00	0.01	-6.06
6,700.00	19.51	6.66	6,351.15	1,730.31	1,068.29	1,721.67	2.00	0.21	-5.99
6,800.00	19.91	0.84	6,445.30	1,763.92	1,070.48	1,755.27	2.00	0.40	-5.81
6,823.06	20.03	359.54	6,466.97	1,771.80	1,070.50	1,763.14	2.00	0.52	-5.66
Hold Tangent @ 6823.06ft									
6,900.00	20.03	359.54	6,539.26	1,798.15	1,070.29	1,789.50	0.00	0.00	0.00
6,944.89	20.03	359.54	6,581.43	1,813.52	1,070.17	1,804.87	0.00	0.00	0.00
KOP @ 6944.88ft :: DLS = 9°/100'									
6,950.00	20.49	359.54	6,586.22	1,815.29	1,070.15	1,806.64	9.00	9.00	0.00
7,000.00	24.99	359.54	6,632.33	1,834.61	1,070.00	1,825.96	9.00	9.00	0.00
7,050.00	29.49	359.54	6,676.77	1,857.49	1,069.81	1,848.84	9.00	9.00	0.00
7,100.00	33.99	359.54	6,719.28	1,883.79	1,069.60	1,875.14	9.00	9.00	0.00
7,150.00	38.49	359.54	6,759.60	1,913.34	1,069.36	1,904.69	9.00	9.00	0.00
7,200.00	42.99	359.54	6,797.47	1,945.96	1,069.10	1,937.31	9.00	9.00	0.00
7,250.00	47.49	359.54	6,832.67	1,981.45	1,068.81	1,972.81	9.00	9.00	0.00
7,300.00	51.99	359.54	6,864.97	2,019.60	1,068.51	2,010.96	9.00	9.00	0.00
7,350.00	56.49	359.54	6,894.19	2,060.16	1,068.18	2,051.52	9.00	9.00	0.00
7,400.00	60.99	359.54	6,920.12	2,102.89	1,067.83	2,094.25	9.00	9.00	0.00
7,450.00	65.49	359.54	6,942.63	2,147.52	1,067.47	2,138.88	9.00	9.00	0.00
7,500.00	69.99	359.54	6,961.57	2,193.78	1,067.10	2,185.14	9.00	9.00	0.00
7,550.00	74.49	359.54	6,976.81	2,241.39	1,066.71	2,232.75	9.00	9.00	0.00
7,600.00	78.99	359.54	6,988.28	2,290.04	1,066.32	2,281.40	9.00	9.00	0.00
7,650.00	83.49	359.54	6,995.89	2,339.44	1,065.92	2,330.81	9.00	9.00	0.00
7,700.00	87.99	359.54	6,999.60	2,389.29	1,065.52	2,380.66	9.00	9.00	0.00
7,722.33	90.00	359.54	7,000.00	2,411.61	1,065.34	2,402.98	9.00	9.00	0.00
End Build/TPZ @ 7722.33ft									
7,800.00	90.00	359.54	7,000.00	2,489.28	1,064.71	2,480.65	0.00	0.00	0.00
7,900.00	90.00	359.54	7,000.00	2,589.28	1,063.90	2,580.65	0.00	0.00	0.00
8,000.00	90.00	359.54	7,000.00	2,689.27	1,063.09	2,680.65	0.00	0.00	0.00
8,100.00	90.00	359.54	7,000.00	2,789.27	1,062.28	2,780.65	0.00	0.00	0.00
8,200.00	90.00	359.54	7,000.00	2,889.27	1,061.47	2,880.65	0.00	0.00	0.00
8,300.00	90.00	359.54	7,000.00	2,989.26	1,060.66	2,980.65	0.00	0.00	0.00
8,400.00	90.00	359.54	7,000.00	3,089.26	1,059.85	3,080.65	0.00	0.00	0.00

Planning Report

Database:	EDM 5000.16 Single User Db	Local Co-ordinate Reference:	Well KIWI 2929-07H
Company:	VERDAD RESOURCES	TVD Reference:	RKB = 20' @ 4991.00usft (RIG)
Project:	WATTENBERG FIELD	MD Reference:	RKB = 20' @ 4991.00usft (RIG)
Site:	2N-64W-32 KIWI 2920 PAD	North Reference:	True
Well:	KIWI 2929-07H	Survey Calculation Method:	Minimum Curvature
Wellbore:	Wellbore #1		
Design:	Design #2		

Planned Survey									
Measured Depth (usft)	Inclination (°)	Azimuth (°)	Vertical Depth (usft)	+N/-S (usft)	+E/-W (usft)	Vertical Section (usft)	Dogleg Rate (°/100usft)	Build Rate (°/100usft)	Turn Rate (°/100usft)
8,500.00	90.00	359.54	7,000.00	3,189.26	1,059.04	3,180.65	0.00	0.00	0.00
8,600.00	90.00	359.54	7,000.00	3,289.25	1,058.23	3,280.65	0.00	0.00	0.00
8,700.00	90.00	359.54	7,000.00	3,389.25	1,057.42	3,380.65	0.00	0.00	0.00
8,800.00	90.00	359.54	7,000.00	3,489.25	1,056.61	3,480.65	0.00	0.00	0.00
8,900.00	90.00	359.54	7,000.00	3,589.24	1,055.80	3,580.65	0.00	0.00	0.00
9,000.00	90.00	359.54	7,000.00	3,689.24	1,054.99	3,680.65	0.00	0.00	0.00
9,100.00	90.00	359.54	7,000.00	3,789.24	1,054.18	3,780.65	0.00	0.00	0.00
9,200.00	90.00	359.54	7,000.00	3,889.23	1,053.37	3,880.65	0.00	0.00	0.00
9,300.00	90.00	359.54	7,000.00	3,989.23	1,052.56	3,980.65	0.00	0.00	0.00
9,400.00	90.00	359.54	7,000.00	4,089.23	1,051.75	4,080.65	0.00	0.00	0.00
9,500.00	90.00	359.54	7,000.00	4,189.23	1,050.94	4,180.65	0.00	0.00	0.00
9,600.00	90.00	359.54	7,000.00	4,289.22	1,050.13	4,280.65	0.00	0.00	0.00
9,700.00	90.00	359.54	7,000.00	4,389.22	1,049.32	4,380.65	0.00	0.00	0.00
9,800.00	90.00	359.54	7,000.00	4,489.22	1,048.51	4,480.65	0.00	0.00	0.00
9,900.00	90.00	359.54	7,000.00	4,589.21	1,047.70	4,580.65	0.00	0.00	0.00
10,000.00	90.00	359.54	7,000.00	4,689.21	1,046.89	4,680.65	0.00	0.00	0.00
10,100.00	90.00	359.54	7,000.00	4,789.21	1,046.08	4,780.65	0.00	0.00	0.00
10,200.00	90.00	359.54	7,000.00	4,889.20	1,045.28	4,880.65	0.00	0.00	0.00
10,300.00	90.00	359.54	7,000.00	4,989.20	1,044.47	4,980.65	0.00	0.00	0.00
10,400.00	90.00	359.54	7,000.00	5,089.20	1,043.66	5,080.65	0.00	0.00	0.00
10,500.00	90.00	359.54	7,000.00	5,189.19	1,042.85	5,180.65	0.00	0.00	0.00
10,600.00	90.00	359.54	7,000.00	5,289.19	1,042.04	5,280.65	0.00	0.00	0.00
10,700.00	90.00	359.54	7,000.00	5,389.19	1,041.23	5,380.65	0.00	0.00	0.00
10,800.00	90.00	359.54	7,000.00	5,489.18	1,040.42	5,480.65	0.00	0.00	0.00
10,900.00	90.00	359.54	7,000.00	5,589.18	1,039.61	5,580.65	0.00	0.00	0.00
11,000.00	90.00	359.54	7,000.00	5,689.18	1,038.80	5,680.65	0.00	0.00	0.00
11,100.00	90.00	359.54	7,000.00	5,789.17	1,037.99	5,780.65	0.00	0.00	0.00
11,200.00	90.00	359.54	7,000.00	5,889.17	1,037.18	5,880.65	0.00	0.00	0.00
11,300.00	90.00	359.54	7,000.00	5,989.17	1,036.37	5,980.65	0.00	0.00	0.00
11,400.00	90.00	359.54	7,000.00	6,089.16	1,035.56	6,080.65	0.00	0.00	0.00
11,500.00	90.00	359.54	7,000.00	6,189.16	1,034.75	6,180.65	0.00	0.00	0.00
11,600.00	90.00	359.54	7,000.00	6,289.16	1,033.94	6,280.65	0.00	0.00	0.00
11,700.00	90.00	359.54	7,000.00	6,389.15	1,033.13	6,380.65	0.00	0.00	0.00
11,800.00	90.00	359.54	7,000.00	6,489.15	1,032.32	6,480.65	0.00	0.00	0.00
11,900.00	90.00	359.54	7,000.00	6,589.15	1,031.51	6,580.65	0.00	0.00	0.00
12,000.00	90.00	359.54	7,000.00	6,689.14	1,030.70	6,680.65	0.00	0.00	0.00
12,057.11	90.00	359.54	7,000.00	6,746.25	1,030.24	6,737.76	0.00	0.00	0.00
BPZ @ 12057.11ft									
12,100.00	90.00	359.54	7,000.00	6,789.14	1,029.89	6,780.65	0.00	0.00	0.00
12,147.10	90.00	359.54	7,000.00	6,836.24	1,029.51	6,827.76	0.00	0.00	0.00
TD Well @ 12147.10ft									

Casing Points				
Measured Depth (usft)	Vertical Depth (usft)	Name	Casing Diameter (")	Hole Diameter (")
2,587.57	2,486.00	9 5/8"	9-5/8	13-1/2

Planning Report

Database:	EDM 5000.16 Single User Db	Local Co-ordinate Reference:	Well KIWI 2929-07H
Company:	VERDAD RESOURCES	TVD Reference:	RKB = 20' @ 4991.00usft (RIG)
Project:	WATTENBERG FIELD	MD Reference:	RKB = 20' @ 4991.00usft (RIG)
Site:	2N-64W-32 KIWI 2920 PAD	North Reference:	True
Well:	KIWI 2929-07H	Survey Calculation Method:	Minimum Curvature
Wellbore:	Wellbore #1		
Design:	Design #2		

Plan Annotations				
Measured Depth (usft)	Vertical Depth (usft)	Local Coordinates		Comment
		+N/-S (usft)	+E/-W (usft)	
242.00	242.00	0.00	0.00	Begin Nudge @ 242.00ft
1,243.50	1,223.22	146.00	93.33	Hold Tangent @ 1243.50ft
6,263.99	5,940.04	1,594.82	1,019.54	Change Tangent Direction @ 6263.99ft
6,823.06	6,466.97	1,771.80	1,070.50	Hold Tangent @ 6823.06ft
6,944.89	6,581.43	1,813.52	1,070.17	KOP @ 6944.88ft :: DLS = 9°/100'
7,722.33	7,000.00	2,411.61	1,065.34	End Build/TPZ @ 7722.33ft
12,057.11	7,000.00	6,746.25	1,030.24	BPZ @ 12057.11ft
12,147.10	7,000.00	6,836.24	1,029.51	TD Well @ 12147.10ft