



07Dec22 14:26 Wildhorse 02-0214H
© 07-Dec-22 14:26:42







07Dec22 14:32 Wildhorse 02-0214H
County Road 110, Grover CO 80729, US © 07-Dec-22 14:32:49

WGS84
±16ft

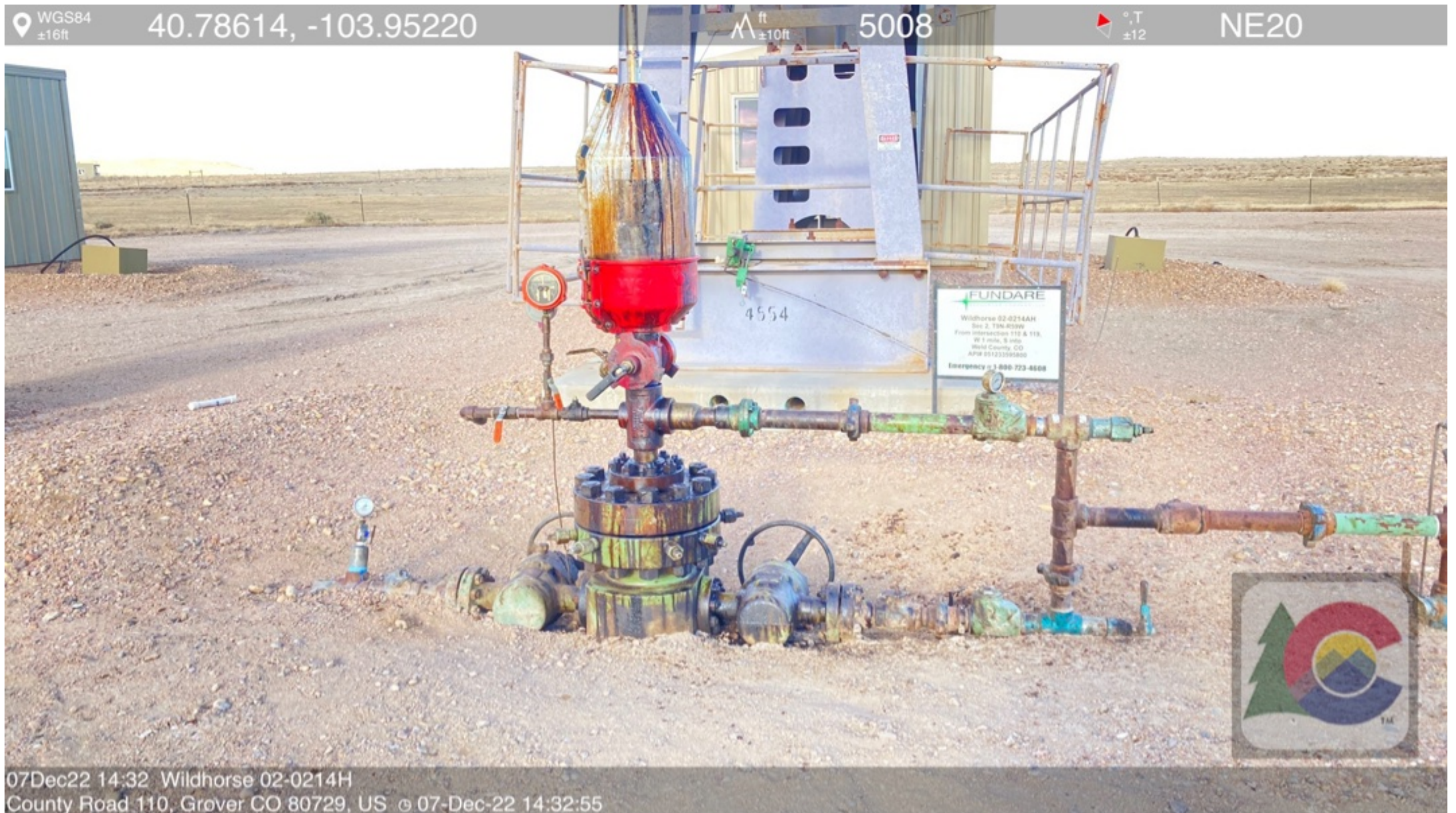
40.78614, -103.95220

ft
±10ft

5008

°T
±12

NE20



07Dec22 14:32 Wildhorse 02-0214H
County Road 110, Grover CO 80729, US © 07-Dec-22 14:32:55



07Dec22 14:33 Wildhorse 02-0214H
County Road 110, Grover CO 80729, US © 07-Dec-22 14:33:02

WGS84
±47ft

40.78617, -103.95228

ft
±27ft

5008

NE42



07Dec22 14:34 Wildhorse 02-0214H
County Road 110, Grover CO 80729, US © 07-Dec-22 14:34:40







WGS84
±16ft

40.78634, -103.95216

ft
±10ft

5010

°T
±12

SE105



07Dec22 14:35 Wildhorse 02-0214H
County Road 110, Grover CO 80729, US © 07-Dec-22 14:35:38

WGS84
±16ft

40.78632, -103.95213

ft
±10ft

5009

°T
±12

E94



07Dec22 14:35 Wildhorse 02-0214H
County Road 110, Grover CO 80729, US © 07-Dec-22 14:35:49







WGS84
±16ft

40.78639, -103.95219

ft
±10ft

5008

°T
±12

NW296



07Dec22 14:36 Wildhorse 02-0214H
County Road 110, Grover CO 80729, US © 07-Dec-22 14:36:24



WGS84
±17ft

40.78636, -103.95230

ft
±9ft

5009

°T
±12

SE155



07Dec22 14:37 Wildhorse 02-0214H
County Road 110, Grover CO 80729, US © 07-Dec-22 14:37:10



WGS84
±17ft

40.78636, -103.95231

ft
±10ft

5010

GRACO

T
±12

SE139



07Dec22 14:37 Wildhorse 02-0214H
County Road 110, Grover CO 80729, US © 07-Dec-22 14:37:26



07Dec22 14:37 Wildhorse 02-0214H
County Road 110, Grover CO 80729, US © 07-Dec-22 14:37:41



07Dec22 14:37 Wildhorse 02-0214H
County Road 110, Grover CO 80729, US © 07-Dec-22 14:37:48



07Dec22 14:38 Wildhorse 02-0214H
County Road 110, Grover CO 80729, US © 07-Dec-22 14:38:15



WGS84
±16ft

40.78618, -103.95235

ft
±10ft

5008

°T
±12

NE21



07Dec22 14:38 Wildhorse 02-0214H
County Road 110, Grover CO 80729, US © 07-Dec-22 14:38:46



WGS84
±16ft

40.78615, -103.95245

ft
±10ft

5009

°T
±12

NE26



07Dec22 14:39 Wildhorse 02-0214H
County Road 110, Grover CO 80729, US © 07-Dec-22 14:39:48







WGS84
±16ft

40.78607, -103.95265

ft
±10ft

5007

±12

W259



07Dec22 14:40 Wildhorse 02-0214H
Grover CO 80729, United States © 07-Dec-22 14:40:44



07Dec22 14:40 Wildhorse 02-0214H
Grover CO 80729, United States © 07-Dec-22 14:40:53



WGS84
±17ft

40.78594, -103.95260

ft
±9ft

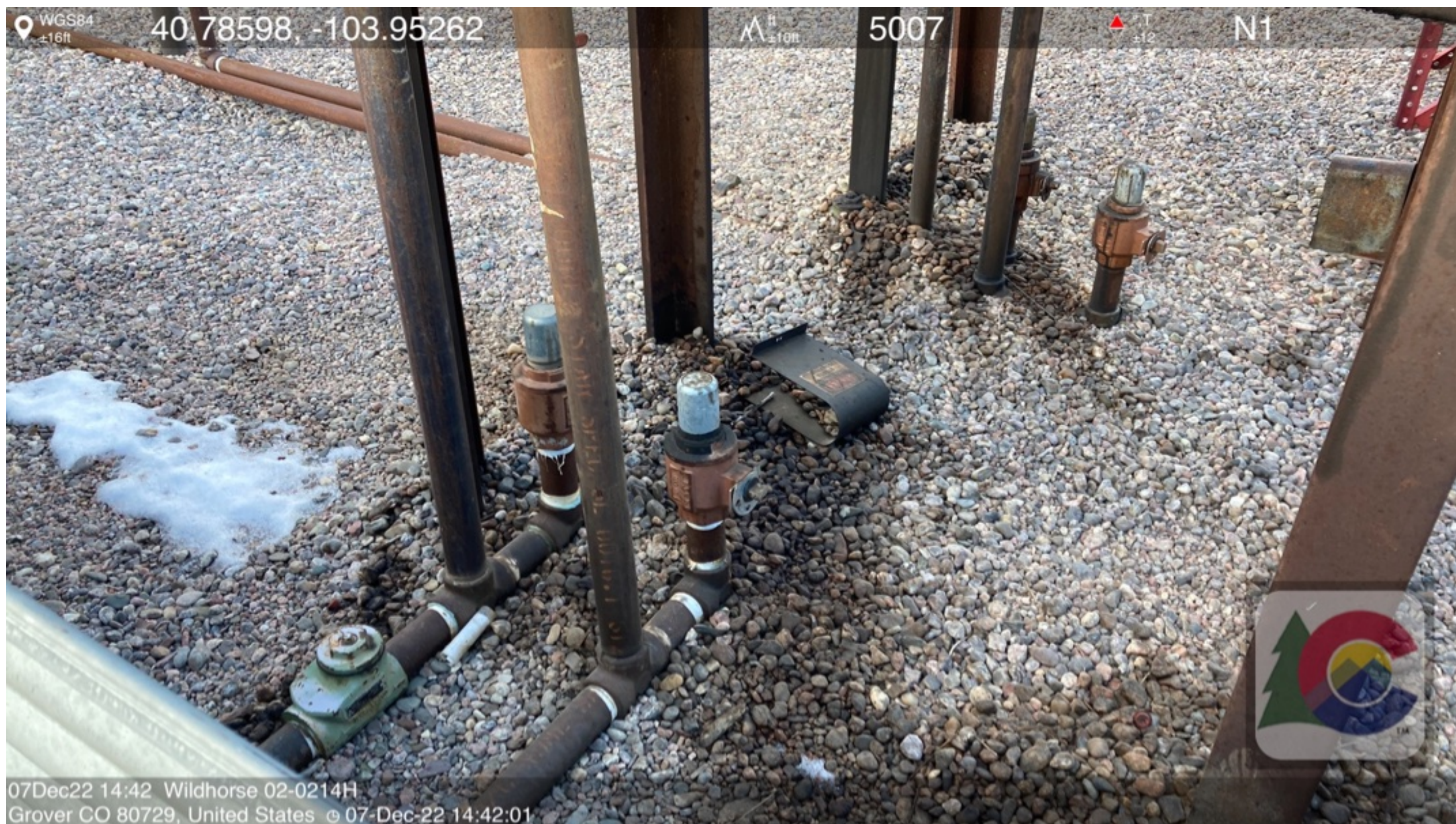
5006

°T
±12

NW337

07Dec22 14:41 Wildhorse 02-0214H
Grover CO 80729, United States © 07-Dec-22 14:41:44









WGS84
±16ft

40.78598, -103.95262

ft
±10ft

5004

ft
±12

NE33



07Dec22 14:42 Wildhorse 02-0214H
Grover CO 80729, United States © 07-Dec-22 14:42:10







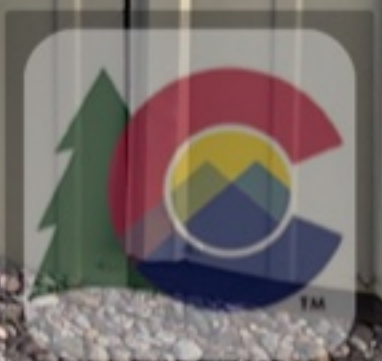


Whiting Oil & Gas Corp
WILDHORSE 02-0214H
Permit 13WE1283
AIRS ID123-9AE3-001

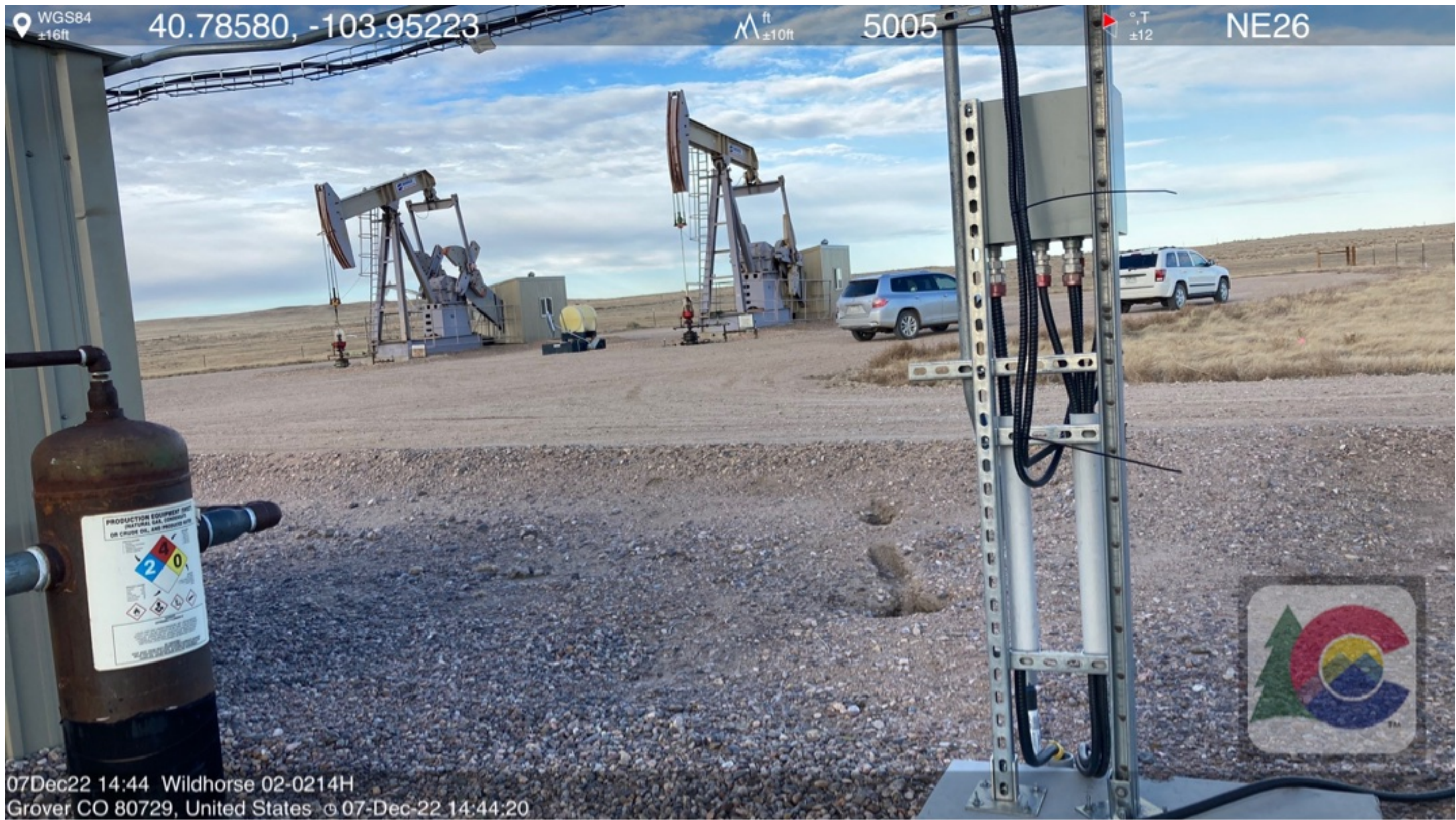


DANGER
NO SMOKING
NO OPEN FLAMES
NO SPARKS

Whiting
Oil & Gas Inc.
WILDHORSE 02-0214H
SEC. 2-T9N-R59W
WELD COUNTY, CO
API # 05-123-3595800
EMERGENCY # 1-800-723-4608



07Dec22 14:44 Wildhorse 02-0214H
Grover CO 80729, United States © 07-Dec-22 14:44:09





07Dec22 14:44 Wildhorse 02-0214H
Grover CO 80729, United States © 07-Dec-22 14:44:37









WGS84
±16ft

40.78573, -103.95200

ft
±10ft

5007

°T
±12

SE153



07Dec22 14:46 Wildhorse 02-0214H
Grover CO 80729, United States © 07-Dec-22 14:46:29







WGS84
±16ft

40.78549, -103.95192

ft
±11ft

5005

ft
±12

NW297



07Dec22 14:47 Wildhorse 02-0214H
Grover CO 80729, United States © 07-Dec-22 14:47:48



WGS84
±16ft

40.78549, -103.95193

ft
±11ft

5004

ft
±12

SE120



07Dec22 14:47 Wildhorse 02-0214H
Grover CO 80729, United States 07-Dec-22 14:47:58

WGS84
±16ft

40.78548, -103.95193

ft
±11ft

5004

°T
±12

SE112



07Dec22 14:48 Wildhorse 02-0214H
Grover CO 80729, United States © 07-Dec-22 14:48:01





WGS84
±16ft

40.78550, -103.95192

ft
±11ft

5004

°T
±12

NW306

07Dec22 14:48 Wildhorse 02-0214H
Grover CO 80729, United States © 07-Dec-22 14:48:21