

# **VERDAD RESOURCES**

**WATTENBERG FIELD**

**1N-65W-22 FAWN 2734 & 2833 PAD**

**FAWN 2833-01H**

**Plan B**

**Plan: Design #1**

## **Standard Planning Report**

**20 December, 2022**

Project: WATTENBERG FIELD  
Site: 1N-65W-22 FAWN 2734 & 2833 PAD  
Well: FAWN 2833-01H  
Wellbore: Plan B  
Design: Design #1

# VERDAD RESOURCES

## CASING DETAILS

TVD	MD	Name	Size
2250.00	2453.55	9 5/8"	9-5/8

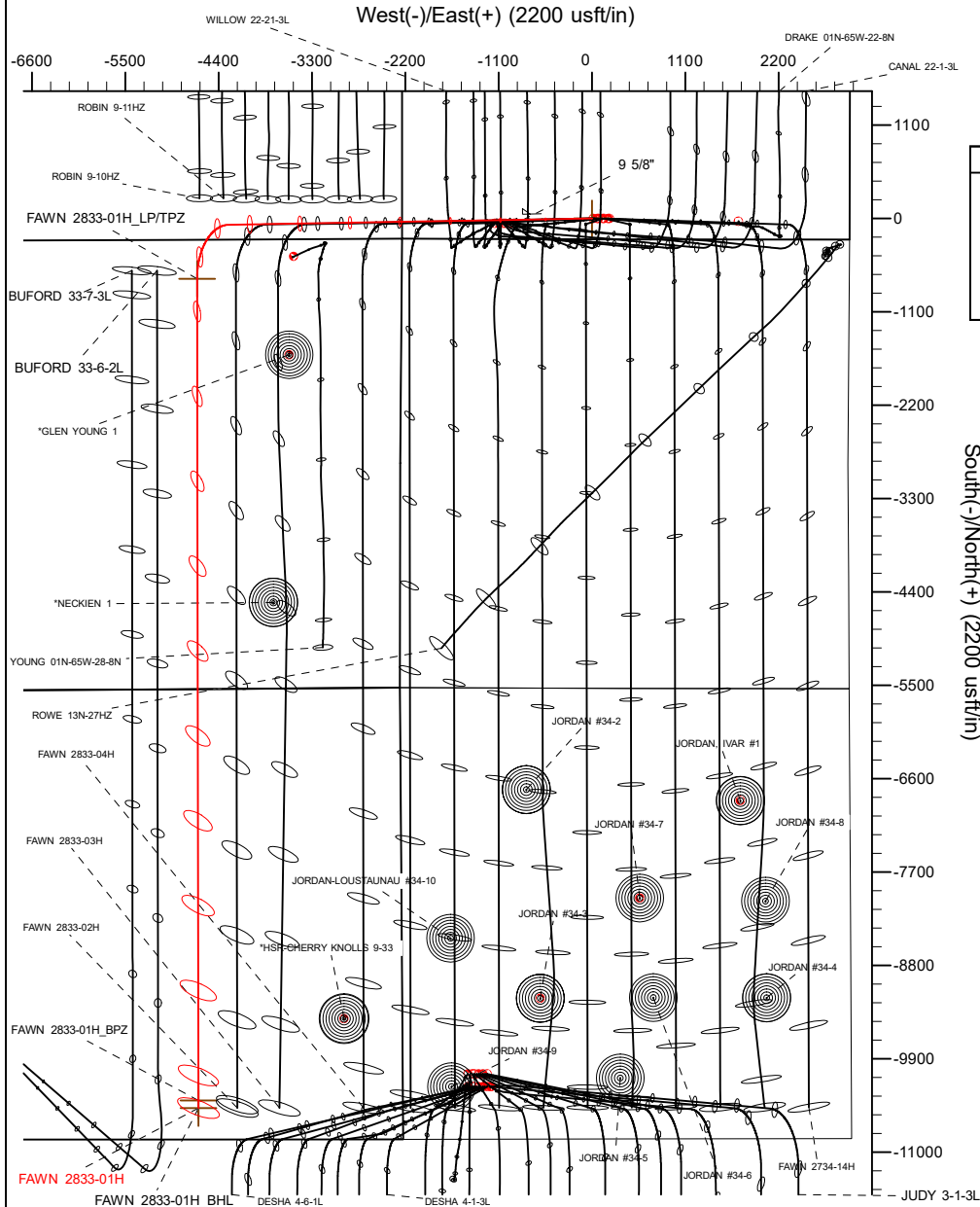
SHL 244' FSL 2238' FWL	LP/TPZ 460' FNL 2411' FEL	BPZ 460' FSL 2411' FEL	BHL 370' FSL 2412' FEL
------------------------------	---------------------------------	------------------------------	------------------------------

## SECTION DETAILS

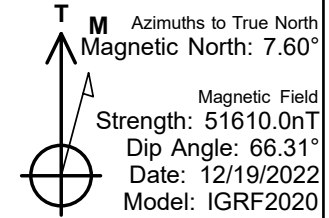
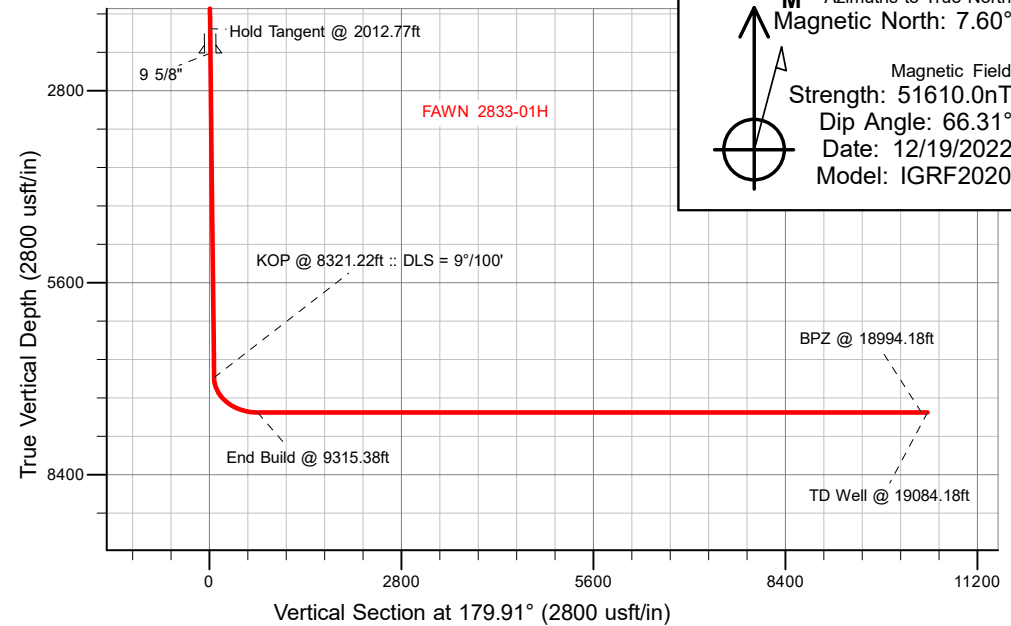
MD	Inc	Azi	TVD	+N/-S	+E/-W	Dleg	TFace	VSecl	Target
0.00	0.00	0.00	0.00	0.00	0.00	0.00	0.00	0.00	
2012.77	0.00	0.00	201.27	0.00	0.00	0.00	0.00	0.00	
2012.77	36.23	269.02	1894.44	-9.47	-553.82	2.00	269.02	8.60	
8321.22	36.23	269.02	6983.16	-73.24	-4281.75	0.00	0.00	66.52	
9315.38	90.00	179.91	7492.00	-710.43	-4653.52	9.00	-89.28	703.12	
19084.18	90.00	179.91	7492.00	-10479.22	-4637.97	0.00	0.00	10471.92	FAWN 2833-01H_BHL

## WELLBORE TARGET DETAILS (LAT/LONG)

Name	TVD	Northing	Easting	Latitude	Longitude
FAWN 2833-01H_SHL	0.00	1255030.14	3237573.91	40.030325	-104.651597
FAWN 2833-01H_LP/TPZ	7492.00	1254275.12	3232927.37	40.028374	-104.668214
FAWN 2833-01H_BPZ	7492.00	1244597.03	3233035.40	40.001804	-104.668153
FAWN 2833-01H_BHL	7492.00	1244507.03	3233036.41	40.001557	-104.668152



South(-)/North(+) (2200 usft/in)



## WELL DETAILS: FAWN 2833-01H

GL = 5107'

RKB = 20' @ 5127.00usft (RIG)

Plan: Design #1 (FAWN 2833-01H/Plan B)

Date: 12/20/2022

## Planning Report

<b>Database:</b>	EDM 5000.16 Single User Db	<b>Local Co-ordinate Reference:</b>	Well FAWN 2833-01H
<b>Company:</b>	VERDAD RESOURCES	<b>TVD Reference:</b>	RKB = 20' @ 5127.00usft (RIG)
<b>Project:</b>	WATTENBERG FIELD	<b>MD Reference:</b>	RKB = 20' @ 5127.00usft (RIG)
<b>Site:</b>	1N-65W-22 FAWN 2734 & 2833 PAD	<b>North Reference:</b>	True
<b>Well:</b>	FAWN 2833-01H	<b>Survey Calculation Method:</b>	Minimum Curvature
<b>Wellbore:</b>	Plan B		
<b>Design:</b>	Design #1		

<b>Project</b>	WATTENBERG FIELD		
<b>Map System:</b>	US State Plane 1983	<b>System Datum:</b>	Mean Sea Level
<b>Geo Datum:</b>	North American Datum 1983		
<b>Map Zone:</b>	Colorado Northern Zone		

Site		1N-65W-22 FAWN 2734 & 2833 PAD			
Site Position:		Northing:	1,255,173.64 usft	Latitude:	40.030719
From:	Lat/Long	Easting:	3,237,589.54 usft	Longitude:	-104.651536
Position Uncertainty:	0.00 usft	Slot Radius:	13-3/16 "		

Well		FAWN 2833-01H				
Well Position	+N/-S	0.00 usft	Northing:	1,255,030.14 usft	Latitude:	40.030326
	+E/-W	0.00 usft	Easting:	3,237,573.91 usft	Longitude:	-104.651597
Position Uncertainty		3.28 usft	Wellhead Elevation:	usft	Ground Level:	5,107.00 usft
Grid Convergence:		0.55 °				

<b>Wellbore</b>	Plan B				
<b>Magnetics</b>	<b>Model Name</b>	<b>Sample Date</b>	<b>Declination (°)</b>	<b>Dip Angle (°)</b>	<b>Field Strength (nT)</b>
	IGRF202013	12/19/2022	7.60	66.31	51,609.97903054

<b>Design</b>	Design #1				
<b>Audit Notes:</b>					
<b>Version:</b>		<b>Phase:</b>	PLAN	<b>Tie On Depth:</b>	0.00
<b>Vertical Section:</b>	<b>Depth From (TVD) (usft)</b>	<b>+N/-S (usft)</b>	<b>+E/-W (usft)</b>	<b>Direction (°)</b>	
	0.00	0.00	0.00	179.91	

<b>Plan Survey Tool Program</b>		<b>Date</b>	12/20/2022		
<b>Depth From (usft)</b>	<b>Depth To (usft)</b>	<b>Survey (Wellbore)</b>	<b>Tool Name</b>	<b>Remarks</b>	
1	0.00	2,250.00	Design #1 (Plan B)	ISCWSA MWD	
				Fixed:v2:standard declination	
2	2,250.00	19,084.18	Design #1 (Plan B)	ISCWSA MWD	
				Fixed:v2:standard declination	

Planning Report

Database:	EDM 5000.16 Single User Db	Local Co-ordinate Reference:	Well FAWN 2833-01H
Company:	VERDAD RESOURCES	TVD Reference:	RKB = 20' @ 5127.00usft (RIG)
Project:	WATTENBERG FIELD	MD Reference:	RKB = 20' @ 5127.00usft (RIG)
Site:	1N-65W-22 FAWN 2734 & 2833 PAD	North Reference:	True
Well:	FAWN 2833-01H	Survey Calculation Method:	Minimum Curvature
Wellbore:	Plan B		
Design:	Design #1		

Plan Sections										
Measured Depth (usft)	Inclination (°)	Azimuth (°)	Vertical Depth (usft)	+N/-S (usft)	+E/-W (usft)	Dogleg Rate (°/100usft)	Build Rate (°/100usft)	Turn Rate (°/100usft)	TFO (°)	Target
0.00	0.00	0.00	0.00	0.00	0.00	0.00	0.00	0.00	0.00	
201.27	0.00	0.00	201.27	0.00	0.00	0.00	0.00	0.00	0.00	
2,012.77	36.23	269.02	1,894.44	-9.47	-553.82	2.00	2.00	0.00	269.02	
8,321.22	36.23	269.02	6,983.16	-73.24	-4,281.75	0.00	0.00	0.00	0.00	
9,315.38	90.00	179.91	7,492.00	-710.43	-4,653.52	9.00	5.41	-8.96	-89.28	
19,084.18	90.00	179.91	7,492.00	-10,479.22	-4,637.97	0.00	0.00	0.00	0.00	FAWN 2833-01H_BHI

## Planning Report

<b>Database:</b>	EDM 5000.16 Single User Db	<b>Local Co-ordinate Reference:</b>	Well FAWN 2833-01H
<b>Company:</b>	VERDAD RESOURCES	<b>TVD Reference:</b>	RKB = 20' @ 5127.00usft (RIG)
<b>Project:</b>	WATTENBERG FIELD	<b>MD Reference:</b>	RKB = 20' @ 5127.00usft (RIG)
<b>Site:</b>	1N-65W-22 FAWN 2734 & 2833 PAD	<b>North Reference:</b>	True
<b>Well:</b>	FAWN 2833-01H	<b>Survey Calculation Method:</b>	Minimum Curvature
<b>Wellbore:</b>	Plan B		
<b>Design:</b>	Design #1		

Planned Survey									
Measured Depth (usft)	Inclination (°)	Azimuth (°)	Vertical Depth (usft)	+N/-S (usft)	+E/-W (usft)	Vertical Section (usft)	Dogleg Rate (°/100usft)	Build Rate (°/100usft)	Turn Rate (°/100usft)
0.00	0.00	0.00	0.00	0.00	0.00	0.00	0.00	0.00	0.00
100.00	0.00	0.00	100.00	0.00	0.00	0.00	0.00	0.00	0.00
201.27	0.00	0.00	201.27	0.00	0.00	0.00	0.00	0.00	0.00
Begin Nudge @ 201.27ft									
300.00	1.97	269.02	299.98	-0.03	-1.70	0.03	2.00	2.00	0.00
400.00	3.97	269.02	399.84	-0.12	-6.89	0.11	2.00	2.00	0.00
500.00	5.97	269.02	499.46	-0.27	-15.56	0.24	2.00	2.00	0.00
600.00	7.97	269.02	598.71	-0.47	-27.70	0.43	2.00	2.00	0.00
700.00	9.97	269.02	697.48	-0.74	-43.30	0.67	2.00	2.00	0.00
800.00	11.97	269.02	795.65	-1.07	-62.33	0.97	2.00	2.00	0.00
900.00	13.97	269.02	893.09	-1.45	-84.78	1.32	2.00	2.00	0.00
1,000.00	15.97	269.02	989.69	-1.89	-110.61	1.72	2.00	2.00	0.00
1,100.00	17.97	269.02	1,085.33	-2.39	-139.80	2.17	2.00	2.00	0.00
1,200.00	19.97	269.02	1,179.89	-2.95	-172.31	2.68	2.00	2.00	0.00
1,300.00	21.97	269.02	1,273.26	-3.56	-208.10	3.23	2.00	2.00	0.00
1,400.00	23.97	269.02	1,365.32	-4.23	-247.12	3.84	2.00	2.00	0.00
1,500.00	25.97	269.02	1,455.97	-4.95	-289.33	4.49	2.00	2.00	0.00
1,600.00	27.97	269.02	1,545.09	-5.73	-334.69	5.20	2.00	2.00	0.00
1,700.00	29.97	269.02	1,632.56	-6.55	-383.12	5.95	2.00	2.00	0.00
1,800.00	31.97	269.02	1,718.30	-7.43	-434.57	6.75	2.00	2.00	0.00
1,900.00	33.97	269.02	1,802.19	-8.36	-488.99	7.60	2.00	2.00	0.00
2,000.00	35.97	269.02	1,884.12	-9.34	-546.30	8.49	2.00	2.00	0.00
2,012.77	36.23	269.02	1,894.44	-9.47	-553.82	8.60	2.00	2.00	0.00
Hold Tangent @ 2012.77ft									
2,100.00	36.23	269.02	1,964.81	-10.36	-605.37	9.40	0.00	0.00	0.00
2,200.00	36.23	269.02	2,045.47	-11.37	-664.47	10.32	0.00	0.00	0.00
2,300.00	36.23	269.02	2,126.14	-12.38	-723.56	11.24	0.00	0.00	0.00
2,400.00	36.23	269.02	2,206.80	-13.39	-782.65	12.16	0.00	0.00	0.00
2,453.55	36.23	269.02	2,250.00	-13.93	-814.30	12.65	0.00	0.00	0.00
9 5/8"									
2,500.00	36.23	269.02	2,287.47	-14.40	-841.75	13.08	0.00	0.00	0.00
2,600.00	36.23	269.02	2,368.13	-15.41	-900.84	13.99	0.00	0.00	0.00
2,700.00	36.23	269.02	2,448.80	-16.42	-959.94	14.91	0.00	0.00	0.00
2,800.00	36.23	269.02	2,529.46	-17.43	-1,019.03	15.83	0.00	0.00	0.00
2,900.00	36.23	269.02	2,610.13	-18.44	-1,078.12	16.75	0.00	0.00	0.00
3,000.00	36.23	269.02	2,690.79	-19.45	-1,137.22	17.67	0.00	0.00	0.00
3,100.00	36.23	269.02	2,771.46	-20.46	-1,196.31	18.58	0.00	0.00	0.00
3,200.00	36.23	269.02	2,852.12	-21.47	-1,255.41	19.50	0.00	0.00	0.00
3,300.00	36.23	269.02	2,932.79	-22.49	-1,314.50	20.42	0.00	0.00	0.00
3,400.00	36.23	269.02	3,013.45	-23.50	-1,373.60	21.34	0.00	0.00	0.00
3,500.00	36.23	269.02	3,094.12	-24.51	-1,432.69	22.26	0.00	0.00	0.00
3,600.00	36.23	269.02	3,174.78	-25.52	-1,491.78	23.17	0.00	0.00	0.00
3,700.00	36.23	269.02	3,255.45	-26.53	-1,550.88	24.09	0.00	0.00	0.00
3,800.00	36.23	269.02	3,336.11	-27.54	-1,609.97	25.01	0.00	0.00	0.00
3,900.00	36.23	269.02	3,416.78	-28.55	-1,669.07	25.93	0.00	0.00	0.00
4,000.00	36.23	269.02	3,497.44	-29.56	-1,728.16	26.85	0.00	0.00	0.00
4,100.00	36.23	269.02	3,578.11	-30.57	-1,787.25	27.77	0.00	0.00	0.00
4,200.00	36.23	269.02	3,658.77	-31.58	-1,846.35	28.68	0.00	0.00	0.00
4,300.00	36.23	269.02	3,739.44	-32.59	-1,905.44	29.60	0.00	0.00	0.00
4,400.00	36.23	269.02	3,820.10	-33.61	-1,964.54	30.52	0.00	0.00	0.00
4,500.00	36.23	269.02	3,900.77	-34.62	-2,023.63	31.44	0.00	0.00	0.00
4,600.00	36.23	269.02	3,981.43	-35.63	-2,082.73	32.36	0.00	0.00	0.00
4,700.00	36.23	269.02	4,062.10	-36.64	-2,141.82	33.27	0.00	0.00	0.00

# Planning Report

<b>Database:</b>	EDM 5000.16 Single User Db	<b>Local Co-ordinate Reference:</b>	Well FAWN 2833-01H
<b>Company:</b>	VERDAD RESOURCES	<b>TVD Reference:</b>	RKB = 20' @ 5127.00usft (RIG)
<b>Project:</b>	WATTENBERG FIELD	<b>MD Reference:</b>	RKB = 20' @ 5127.00usft (RIG)
<b>Site:</b>	1N-65W-22 FAWN 2734 & 2833 PAD	<b>North Reference:</b>	True
<b>Well:</b>	FAWN 2833-01H	<b>Survey Calculation Method:</b>	Minimum Curvature
<b>Wellbore:</b>	Plan B		
<b>Design:</b>	Design #1		

Planned Survey									
Measured Depth (usft)	Inclination (°)	Azimuth (°)	Vertical Depth (usft)	+N/-S (usft)	+E/-W (usft)	Vertical Section (usft)	Dogleg Rate (°/100usft)	Build Rate (°/100usft)	Turn Rate (°/100usft)
4,800.00	36.23	269.02	4,142.76	-37.65	-2,200.91	34.19	0.00	0.00	0.00
4,900.00	36.23	269.02	4,223.43	-38.66	-2,260.01	35.11	0.00	0.00	0.00
5,000.00	36.23	269.02	4,304.09	-39.67	-2,319.10	36.03	0.00	0.00	0.00
5,100.00	36.23	269.02	4,384.76	-40.68	-2,378.20	36.95	0.00	0.00	0.00
5,200.00	36.23	269.02	4,465.42	-41.69	-2,437.29	37.86	0.00	0.00	0.00
5,300.00	36.23	269.02	4,546.09	-42.70	-2,496.38	38.78	0.00	0.00	0.00
5,400.00	36.23	269.02	4,626.75	-43.71	-2,555.48	39.70	0.00	0.00	0.00
5,500.00	36.23	269.02	4,707.42	-44.72	-2,614.57	40.62	0.00	0.00	0.00
5,600.00	36.23	269.02	4,788.08	-45.74	-2,673.67	41.54	0.00	0.00	0.00
5,700.00	36.23	269.02	4,868.75	-46.75	-2,732.76	42.45	0.00	0.00	0.00
5,800.00	36.23	269.02	4,949.41	-47.76	-2,791.86	43.37	0.00	0.00	0.00
5,900.00	36.23	269.02	5,030.08	-48.77	-2,850.95	44.29	0.00	0.00	0.00
6,000.00	36.23	269.02	5,110.74	-49.78	-2,910.04	45.21	0.00	0.00	0.00
6,100.00	36.23	269.02	5,191.41	-50.79	-2,969.14	46.13	0.00	0.00	0.00
6,200.00	36.23	269.02	5,272.07	-51.80	-3,028.23	47.04	0.00	0.00	0.00
6,300.00	36.23	269.02	5,352.74	-52.81	-3,087.33	47.96	0.00	0.00	0.00
6,400.00	36.23	269.02	5,433.40	-53.82	-3,146.42	48.88	0.00	0.00	0.00
6,500.00	36.23	269.02	5,514.07	-54.83	-3,205.51	49.80	0.00	0.00	0.00
6,600.00	36.23	269.02	5,594.73	-55.84	-3,264.61	50.72	0.00	0.00	0.00
6,700.00	36.23	269.02	5,675.40	-56.85	-3,323.70	51.63	0.00	0.00	0.00
6,800.00	36.23	269.02	5,756.06	-57.87	-3,382.80	52.55	0.00	0.00	0.00
6,900.00	36.23	269.02	5,836.73	-58.88	-3,441.89	53.47	0.00	0.00	0.00
7,000.00	36.23	269.02	5,917.39	-59.89	-3,500.99	54.39	0.00	0.00	0.00
7,100.00	36.23	269.02	5,998.06	-60.90	-3,560.08	55.31	0.00	0.00	0.00
7,200.00	36.23	269.02	6,078.73	-61.91	-3,619.17	56.22	0.00	0.00	0.00
7,300.00	36.23	269.02	6,159.39	-62.92	-3,678.27	57.14	0.00	0.00	0.00
7,400.00	36.23	269.02	6,240.06	-63.93	-3,737.36	58.06	0.00	0.00	0.00
7,500.00	36.23	269.02	6,320.72	-64.94	-3,796.46	58.98	0.00	0.00	0.00
7,600.00	36.23	269.02	6,401.39	-65.95	-3,855.55	59.90	0.00	0.00	0.00
7,700.00	36.23	269.02	6,482.05	-66.96	-3,914.64	60.81	0.00	0.00	0.00
7,800.00	36.23	269.02	6,562.72	-67.97	-3,973.74	61.73	0.00	0.00	0.00
7,900.00	36.23	269.02	6,643.38	-68.99	-4,032.83	62.65	0.00	0.00	0.00
8,000.00	36.23	269.02	6,724.05	-70.00	-4,091.93	63.57	0.00	0.00	0.00
8,100.00	36.23	269.02	6,804.71	-71.01	-4,151.02	64.49	0.00	0.00	0.00
8,200.00	36.23	269.02	6,885.38	-72.02	-4,210.12	65.40	0.00	0.00	0.00
8,300.00	36.23	269.02	6,966.04	-73.03	-4,269.21	66.32	0.00	0.00	0.00
8,321.22	36.23	269.02	6,983.16	-73.24	-4,281.75	66.52	0.00	0.00	0.00
KOP @ 8321.22ft :: DLS = 9°/100'									
8,350.00	36.34	264.65	7,006.36	-74.18	-4,298.75	67.43	9.00	0.39	-15.20
8,400.00	36.91	257.16	7,046.51	-78.91	-4,328.15	72.11	9.00	1.14	-14.97
8,450.00	37.93	249.95	7,086.24	-87.52	-4,357.24	80.67	9.00	2.05	-14.43
8,500.00	39.38	243.12	7,125.30	-99.96	-4,385.84	93.07	9.00	2.88	-13.66
8,550.00	41.19	236.75	7,163.46	-116.17	-4,413.77	109.24	9.00	3.63	-12.74
8,600.00	43.33	230.86	7,200.47	-136.04	-4,440.86	129.06	9.00	4.28	-11.78
8,650.00	45.75	225.44	7,236.12	-159.44	-4,466.93	152.43	9.00	4.84	-10.83
8,700.00	48.40	220.48	7,270.18	-186.24	-4,491.84	179.19	9.00	5.31	-9.93
8,750.00	51.25	215.92	7,302.44	-216.27	-4,515.43	209.18	9.00	5.70	-9.12
8,800.00	54.27	211.72	7,332.71	-249.34	-4,537.55	242.21	9.00	6.03	-8.40
8,850.00	57.41	207.83	7,360.79	-285.25	-4,558.06	278.09	9.00	6.30	-7.77
8,900.00	60.67	204.21	7,386.51	-323.78	-4,576.85	316.59	9.00	6.52	-7.24
8,950.00	64.02	200.82	7,409.71	-364.68	-4,593.78	357.47	9.00	6.70	-6.78
9,000.00	67.45	197.62	7,430.26	-407.72	-4,608.77	400.48	9.00	6.85	-6.40
9,050.00	70.94	194.57	7,448.02	-452.61	-4,621.71	445.35	9.00	6.97	-6.09
9,100.00	74.47	191.66	7,462.89	-499.10	-4,632.53	491.82	9.00	7.07	-5.84

## Planning Report

<b>Database:</b>	EDM 5000.16 Single User Db	<b>Local Co-ordinate Reference:</b>	Well FAWN 2833-01H
<b>Company:</b>	VERDAD RESOURCES	<b>TVD Reference:</b>	RKB = 20' @ 5127.00usft (RIG)
<b>Project:</b>	WATTENBERG FIELD	<b>MD Reference:</b>	RKB = 20' @ 5127.00usft (RIG)
<b>Site:</b>	1N-65W-22 FAWN 2734 & 2833 PAD	<b>North Reference:</b>	True
<b>Well:</b>	FAWN 2833-01H	<b>Survey Calculation Method:</b>	Minimum Curvature
<b>Wellbore:</b>	Plan B		
<b>Design:</b>	Design #1		

Planned Survey									
Measured Depth (usft)	Inclination (°)	Azimuth (°)	Vertical Depth (usft)	+N/-S (usft)	+E/-W (usft)	Vertical Section (usft)	Dogleg Rate (°/100usft)	Build Rate (°/100usft)	Turn Rate (°/100usft)
9,150.00	78.04	188.84	7,474.77	-546.88	-4,641.15	539.59	9.00	7.14	-5.64
9,200.00	81.64	186.09	7,483.59	-595.67	-4,647.54	588.37	9.00	7.20	-5.49
9,250.00	85.26	183.39	7,489.30	-645.16	-4,651.64	637.85	9.00	7.23	-5.39
9,300.00	88.88	180.73	7,491.85	-695.05	-4,653.43	687.74	9.00	7.25	-5.33
9,315.38	90.00	179.91	7,492.00	-710.43	-4,653.52	703.12	9.00	7.26	-5.32
End Build @ 9315.38ft									
9,400.00	90.00	179.91	7,492.00	-795.05	-4,653.38	787.73	0.00	0.00	0.00
9,500.00	90.00	179.91	7,492.00	-895.05	-4,653.22	887.73	0.00	0.00	0.00
9,600.00	90.00	179.91	7,492.00	-995.04	-4,653.06	987.73	0.00	0.00	0.00
9,700.00	90.00	179.91	7,492.00	-1,095.04	-4,652.91	1,087.73	0.00	0.00	0.00
9,800.00	90.00	179.91	7,492.00	-1,195.04	-4,652.75	1,187.73	0.00	0.00	0.00
9,900.00	90.00	179.91	7,492.00	-1,295.04	-4,652.59	1,287.73	0.00	0.00	0.00
10,000.00	90.00	179.91	7,492.00	-1,395.04	-4,652.43	1,387.73	0.00	0.00	0.00
10,100.00	90.00	179.91	7,492.00	-1,495.04	-4,652.27	1,487.73	0.00	0.00	0.00
10,200.00	90.00	179.91	7,492.00	-1,595.04	-4,652.11	1,587.73	0.00	0.00	0.00
10,300.00	90.00	179.91	7,492.00	-1,695.04	-4,651.95	1,687.73	0.00	0.00	0.00
10,400.00	90.00	179.91	7,492.00	-1,795.04	-4,651.79	1,787.73	0.00	0.00	0.00
10,500.00	90.00	179.91	7,492.00	-1,895.04	-4,651.63	1,887.73	0.00	0.00	0.00
10,600.00	90.00	179.91	7,492.00	-1,995.04	-4,651.47	1,987.73	0.00	0.00	0.00
10,700.00	90.00	179.91	7,492.00	-2,095.04	-4,651.31	2,087.73	0.00	0.00	0.00
10,800.00	90.00	179.91	7,492.00	-2,195.04	-4,651.15	2,187.73	0.00	0.00	0.00
10,900.00	90.00	179.91	7,492.00	-2,295.04	-4,651.00	2,287.73	0.00	0.00	0.00
11,000.00	90.00	179.91	7,492.00	-2,395.04	-4,650.84	2,387.73	0.00	0.00	0.00
11,100.00	90.00	179.91	7,492.00	-2,495.04	-4,650.68	2,487.73	0.00	0.00	0.00
11,200.00	90.00	179.91	7,492.00	-2,595.04	-4,650.52	2,587.73	0.00	0.00	0.00
11,300.00	90.00	179.91	7,492.00	-2,695.04	-4,650.36	2,687.73	0.00	0.00	0.00
11,400.00	90.00	179.91	7,492.00	-2,795.04	-4,650.20	2,787.73	0.00	0.00	0.00
11,500.00	90.00	179.91	7,492.00	-2,895.04	-4,650.04	2,887.73	0.00	0.00	0.00
11,600.00	90.00	179.91	7,492.00	-2,995.04	-4,649.88	2,987.73	0.00	0.00	0.00
11,700.00	90.00	179.91	7,492.00	-3,095.04	-4,649.72	3,087.73	0.00	0.00	0.00
11,800.00	90.00	179.91	7,492.00	-3,195.04	-4,649.56	3,187.73	0.00	0.00	0.00
11,900.00	90.00	179.91	7,492.00	-3,295.04	-4,649.40	3,287.73	0.00	0.00	0.00
12,000.00	90.00	179.91	7,492.00	-3,395.04	-4,649.24	3,387.73	0.00	0.00	0.00
12,100.00	90.00	179.91	7,492.00	-3,495.04	-4,649.09	3,487.73	0.00	0.00	0.00
12,200.00	90.00	179.91	7,492.00	-3,595.04	-4,648.93	3,587.73	0.00	0.00	0.00
12,300.00	90.00	179.91	7,492.00	-3,695.04	-4,648.77	3,687.73	0.00	0.00	0.00
12,400.00	90.00	179.91	7,492.00	-3,795.04	-4,648.61	3,787.73	0.00	0.00	0.00
12,500.00	90.00	179.91	7,492.00	-3,895.04	-4,648.45	3,887.73	0.00	0.00	0.00
12,600.00	90.00	179.91	7,492.00	-3,995.04	-4,648.29	3,987.73	0.00	0.00	0.00
12,700.00	90.00	179.91	7,492.00	-4,095.04	-4,648.13	4,087.73	0.00	0.00	0.00
12,800.00	90.00	179.91	7,492.00	-4,195.04	-4,647.97	4,187.73	0.00	0.00	0.00
12,900.00	90.00	179.91	7,492.00	-4,295.04	-4,647.81	4,287.73	0.00	0.00	0.00
13,000.00	90.00	179.91	7,492.00	-4,395.04	-4,647.65	4,387.73	0.00	0.00	0.00
13,100.00	90.00	179.91	7,492.00	-4,495.04	-4,647.49	4,487.73	0.00	0.00	0.00
13,200.00	90.00	179.91	7,492.00	-4,595.04	-4,647.34	4,587.73	0.00	0.00	0.00
13,300.00	90.00	179.91	7,492.00	-4,695.04	-4,647.18	4,687.73	0.00	0.00	0.00
13,400.00	90.00	179.91	7,492.00	-4,795.04	-4,647.02	4,787.73	0.00	0.00	0.00
13,500.00	90.00	179.91	7,492.00	-4,895.04	-4,646.86	4,887.73	0.00	0.00	0.00
13,600.00	90.00	179.91	7,492.00	-4,995.04	-4,646.70	4,987.73	0.00	0.00	0.00
13,700.00	90.00	179.91	7,492.00	-5,095.04	-4,646.54	5,087.73	0.00	0.00	0.00
13,800.00	90.00	179.91	7,492.00	-5,195.04	-4,646.38	5,187.73	0.00	0.00	0.00
13,900.00	90.00	179.91	7,492.00	-5,295.04	-4,646.22	5,287.73	0.00	0.00	0.00
14,000.00	90.00	179.91	7,492.00	-5,395.04	-4,646.06	5,387.73	0.00	0.00	0.00

## Planning Report

<b>Database:</b>	EDM 5000.16 Single User Db	<b>Local Co-ordinate Reference:</b>	Well FAWN 2833-01H
<b>Company:</b>	VERDAD RESOURCES	<b>TVD Reference:</b>	RKB = 20' @ 5127.00usft (RIG)
<b>Project:</b>	WATTENBERG FIELD	<b>MD Reference:</b>	RKB = 20' @ 5127.00usft (RIG)
<b>Site:</b>	1N-65W-22 FAWN 2734 & 2833 PAD	<b>North Reference:</b>	True
<b>Well:</b>	FAWN 2833-01H	<b>Survey Calculation Method:</b>	Minimum Curvature
<b>Wellbore:</b>	Plan B		
<b>Design:</b>	Design #1		

Planned Survey									
Measured Depth (usft)	Inclination (°)	Azimuth (°)	Vertical Depth (usft)	+N/-S (usft)	+E/-W (usft)	Vertical Section (usft)	Dogleg Rate (°/100usft)	Build Rate (°/100usft)	Turn Rate (°/100usft)
14,100.00	90.00	179.91	7,492.00	-5,495.04	-4,645.90	5,487.73	0.00	0.00	0.00
14,200.00	90.00	179.91	7,492.00	-5,595.04	-4,645.74	5,587.73	0.00	0.00	0.00
14,300.00	90.00	179.91	7,492.00	-5,695.04	-4,645.58	5,687.73	0.00	0.00	0.00
14,400.00	90.00	179.91	7,492.00	-5,795.04	-4,645.43	5,787.73	0.00	0.00	0.00
14,500.00	90.00	179.91	7,492.00	-5,895.04	-4,645.27	5,887.73	0.00	0.00	0.00
14,600.00	90.00	179.91	7,492.00	-5,995.04	-4,645.11	5,987.73	0.00	0.00	0.00
14,700.00	90.00	179.91	7,492.00	-6,095.04	-4,644.95	6,087.73	0.00	0.00	0.00
14,800.00	90.00	179.91	7,492.00	-6,195.04	-4,644.79	6,187.73	0.00	0.00	0.00
14,900.00	90.00	179.91	7,492.00	-6,295.04	-4,644.63	6,287.73	0.00	0.00	0.00
15,000.00	90.00	179.91	7,492.00	-6,395.04	-4,644.47	6,387.73	0.00	0.00	0.00
15,100.00	90.00	179.91	7,492.00	-6,495.04	-4,644.31	6,487.73	0.00	0.00	0.00
15,200.00	90.00	179.91	7,492.00	-6,595.04	-4,644.15	6,587.73	0.00	0.00	0.00
15,300.00	90.00	179.91	7,492.00	-6,695.04	-4,643.99	6,687.73	0.00	0.00	0.00
15,400.00	90.00	179.91	7,492.00	-6,795.04	-4,643.83	6,787.73	0.00	0.00	0.00
15,500.00	90.00	179.91	7,492.00	-6,895.04	-4,643.68	6,887.73	0.00	0.00	0.00
15,600.00	90.00	179.91	7,492.00	-6,995.04	-4,643.52	6,987.73	0.00	0.00	0.00
15,700.00	90.00	179.91	7,492.00	-7,095.04	-4,643.36	7,087.73	0.00	0.00	0.00
15,800.00	90.00	179.91	7,492.00	-7,195.04	-4,643.20	7,187.73	0.00	0.00	0.00
15,900.00	90.00	179.91	7,492.00	-7,295.04	-4,643.04	7,287.73	0.00	0.00	0.00
16,000.00	90.00	179.91	7,492.00	-7,395.04	-4,642.88	7,387.73	0.00	0.00	0.00
16,100.00	90.00	179.91	7,492.00	-7,495.04	-4,642.72	7,487.73	0.00	0.00	0.00
16,200.00	90.00	179.91	7,492.00	-7,595.04	-4,642.56	7,587.73	0.00	0.00	0.00
16,300.00	90.00	179.91	7,492.00	-7,695.04	-4,642.40	7,687.73	0.00	0.00	0.00
16,400.00	90.00	179.91	7,492.00	-7,795.04	-4,642.24	7,787.73	0.00	0.00	0.00
16,500.00	90.00	179.91	7,492.00	-7,895.04	-4,642.08	7,887.73	0.00	0.00	0.00
16,600.00	90.00	179.91	7,492.00	-7,995.04	-4,641.92	7,987.73	0.00	0.00	0.00
16,700.00	90.00	179.91	7,492.00	-8,095.04	-4,641.77	8,087.73	0.00	0.00	0.00
16,800.00	90.00	179.91	7,492.00	-8,195.04	-4,641.61	8,187.73	0.00	0.00	0.00
16,900.00	90.00	179.91	7,492.00	-8,295.04	-4,641.45	8,287.73	0.00	0.00	0.00
17,000.00	90.00	179.91	7,492.00	-8,395.04	-4,641.29	8,387.73	0.00	0.00	0.00
17,100.00	90.00	179.91	7,492.00	-8,495.04	-4,641.13	8,487.73	0.00	0.00	0.00
17,200.00	90.00	179.91	7,492.00	-8,595.04	-4,640.97	8,587.73	0.00	0.00	0.00
17,300.00	90.00	179.91	7,492.00	-8,695.04	-4,640.81	8,687.73	0.00	0.00	0.00
17,400.00	90.00	179.91	7,492.00	-8,795.04	-4,640.65	8,787.73	0.00	0.00	0.00
17,500.00	90.00	179.91	7,492.00	-8,895.04	-4,640.49	8,887.73	0.00	0.00	0.00
17,600.00	90.00	179.91	7,492.00	-8,995.04	-4,640.33	8,987.73	0.00	0.00	0.00
17,700.00	90.00	179.91	7,492.00	-9,095.03	-4,640.17	9,087.73	0.00	0.00	0.00
17,800.00	90.00	179.91	7,492.00	-9,195.03	-4,640.02	9,187.73	0.00	0.00	0.00
17,900.00	90.00	179.91	7,492.00	-9,295.03	-4,639.86	9,287.73	0.00	0.00	0.00
18,000.00	90.00	179.91	7,492.00	-9,395.03	-4,639.70	9,387.73	0.00	0.00	0.00
18,100.00	90.00	179.91	7,492.00	-9,495.03	-4,639.54	9,487.73	0.00	0.00	0.00
18,200.00	90.00	179.91	7,492.00	-9,595.03	-4,639.38	9,587.73	0.00	0.00	0.00
18,300.00	90.00	179.91	7,492.00	-9,695.03	-4,639.22	9,687.73	0.00	0.00	0.00
18,400.00	90.00	179.91	7,492.00	-9,795.03	-4,639.06	9,787.73	0.00	0.00	0.00
18,500.00	90.00	179.91	7,492.00	-9,895.03	-4,638.90	9,887.73	0.00	0.00	0.00
18,600.00	90.00	179.91	7,492.00	-9,995.03	-4,638.74	9,987.73	0.00	0.00	0.00
18,700.00	90.00	179.91	7,492.00	-10,095.03	-4,638.58	10,087.73	0.00	0.00	0.00
18,800.00	90.00	179.91	7,492.00	-10,195.03	-4,638.42	10,187.73	0.00	0.00	0.00
18,900.00	90.00	179.91	7,492.00	-10,295.03	-4,638.26	10,287.73	0.00	0.00	0.00
18,994.18	90.00	179.91	7,492.00	-10,389.21	-4,638.11	10,381.91	0.00	0.00	0.00
BPZ @ 18994.18ft									
19,000.00	90.00	179.91	7,492.00	-10,395.03	-4,638.11	10,387.73	0.00	0.00	0.00
19,084.18	90.00	179.91	7,492.00	-10,479.22	-4,637.97	10,471.92	0.00	0.00	0.00
TD Well @ 19084.18ft									



## Planning Report

<b>Database:</b>	EDM 5000.16 Single User Db	<b>Local Co-ordinate Reference:</b>	Well FAWN 2833-01H
<b>Company:</b>	VERDAD RESOURCES	<b>TVD Reference:</b>	RKB = 20' @ 5127.00usft (RIG)
<b>Project:</b>	WATTENBERG FIELD	<b>MD Reference:</b>	RKB = 20' @ 5127.00usft (RIG)
<b>Site:</b>	1N-65W-22 FAWN 2734 & 2833 PAD	<b>North Reference:</b>	True
<b>Well:</b>	FAWN 2833-01H	<b>Survey Calculation Method:</b>	Minimum Curvature
<b>Wellbore:</b>	Plan B		
<b>Design:</b>	Design #1		

Planned Survey									
Measured Depth (usft)	Inclination (°)	Azimuth (°)	Vertical Depth (usft)	+N/-S (usft)	+E/-W (usft)	Vertical Section (usft)	Dogleg Rate (°/100usft)	Build Rate (°/100usft)	Turn Rate (°/100usft)

Casing Points					
Measured Depth (usft)	Vertical Depth (usft)	Name		Casing Diameter (")	Hole Diameter (")
2,453.55	2,250.00	9 5/8"		9-5/8	13-1/2

Plan Annotations					
Measured Depth (usft)	Vertical Depth (usft)	Local Coordinates			
		+N/-S (usft)	+E/-W (usft)	Comment	
201.27	201.27	0.00	0.00	Begin Nudge @ 201.27ft	
2,012.77	1,894.44	-9.47	-553.82	Hold Tangent @ 2012.77ft	
8,321.22	6,983.16	-73.24	-4,281.75	KOP @ 8321.22ft :: DLS = 9°/100'	
9,315.38	7,492.00	-710.43	-4,653.52	End Build @ 9315.38ft	
18,994.18	7,492.00	-10,389.21	-4,638.11	BPZ @ 18994.18ft	
19,084.18	7,492.00	-10,479.22	-4,637.97	TD Well @ 19084.18ft	