



RADIAL BOND LOG
GAMMA RAY
CCL / VDL / MAP

Company CHEVRON
 Well HUNT LF18-62HN
 Field DJ HORIZONTAL NIBRARA - 16950
 County WELD
 State COLORADO Country U.S.A.

Company CHEVRON
 Well HUNT LF18-62HN
 Field DJ HORIZONTAL NIBRARA - 16950
 County WELD
 State COLORADO Country U.S.A.

Location: AP1 #: 05-123-36663-00
 Otr. Qtr. NENE
 Permanent Datum SEC 19 TWP 8N RGE 60W
 Log Measured From Kelly Bushing Elevation 4940'
 Drilling Measured From Kelly Bushing Elevation 4956'
 G.L. 4940'

Date OCTOBER 14, 2022

Run Number 1
 Depth Driller 10.765'
 Depth Logger 2100'
 Bottom Logged Interval 2092'
 Top Log Interval Surface
 Open Hole Size 8.75"
 Type Fluid Water
 Density / Viscosity 8.3#
 Max. Recorded Temp. N/A
 Estimated Cement Top N/A
 Time Well Ready N/A
 Time Logger on Bottom N/A
 Equipment Number DSSHSR20-001
 Location MILLIKEN, CO
 Recorded By J. MICHAEL
 Witnessed By MR. MATT MORGAN

Borehole Record		Tubing Record					
Run Number	Bit	From	To	Size	Weight	From	To


Casing Record		Top		Bottom	
Surface String	Size	Wgt/Ft	Surface	Surface	Bottom
Surface String	9-5/8"	36# J-55	Surface	Surface	623'
Production String	7"	26# P-110	Surface	Surface	6999'

<<< Fold Here >>>

All interpretations are opinions based on inferences from electrical or other measurements and we cannot and do not guarantee the accuracy or correctness of any interpretation, and we shall not, except in the case of gross or willful negligence on our part, be liable or responsible for any loss, costs, damages, or expenses incurred or sustained by anyone resulting from any interpretation made by any of our officers, agents or employees. These interpretations are also subject to our general terms and conditions set out in our current Price Schedule.

Comments

NO CORRELATION LOG AVAILABLE

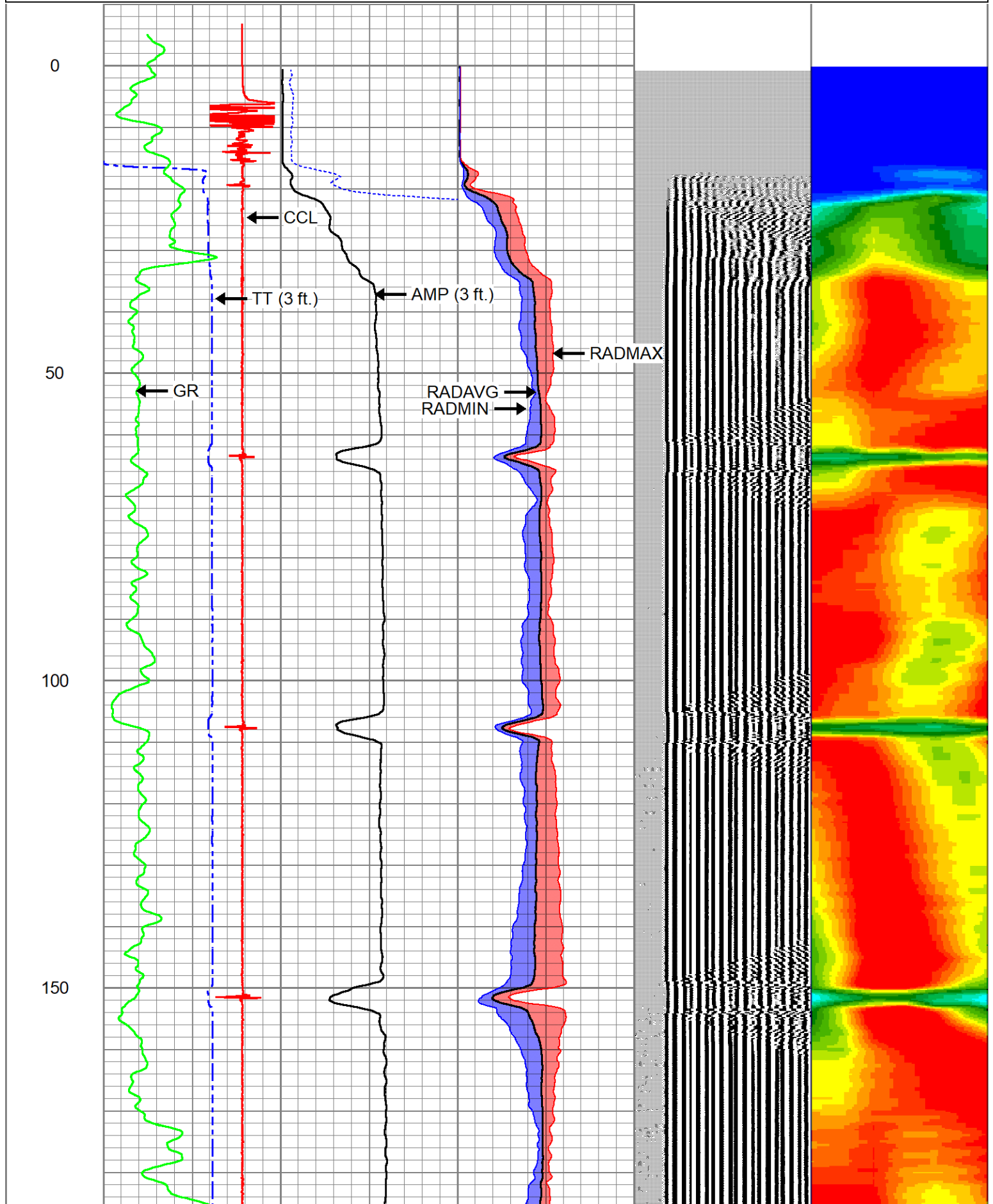
Sensor	Offset (ft)	Schematic	Description	Length (ft)	O.D. (in)	Weight (lb)
			Cable_Head-1_7/16 Titan 1 7/16" Cable Head	1.02	1.44	3.31

			Centralizers-Sondex PRC 2.75" Roller Centralizers Tekco 2 3/4" Adjustable Centralizer	3.00	2.75	25.00
CCL	0.00					
TCF	0.00					
GRHV	0.94					
GR	0.94					
			DSS_HSR_ELE-DSS_HSR_20_ELE (HSR20 0000) DSS 2 3/4" HSR Bond tool - Electronics Module	4.81	2.75	61.00
ROTV	4.10					
THV	4.10					
INTEMP	4.10					
PNEG	4.10					
PPOS	4.10					
WVFS8	6.09					
WVFS7	6.09					
WVFS6	6.09					
WVFS5	6.09					
WVFS4	6.09					
WVFS3	6.09		DSS_HSR_SND-DSS_HSR_20_SND (HSR20 0000) DSS 2 3/4" HSR Bond tool - Sonde Module	7.70	2.75	86.00
WVFS2	6.09					
WVFS1	6.09					
WVFCAL	6.59					
WVF3FT	6.59					
WVF5FT	7.59					
TEMP	11.67					
WVFSYNC	11.80					
			Centralizers-Sondex PRC 2.75" Roller Centralizers Tekco 2 3/4" Adjustable Centralizer	3.00	2.75	25.00

Dataset: chevron-hunt lf18-62hn.db: field/HUNT_LF_18-62HN/RADIAL_BOND_LOG/RBL_M.1
 Total length: 19.52 ft
 Total weight: 200.31 lb
 O.D.: 2.75 in

Database File chevron-hunt lf18-62hn.db
 Dataset Pathname HUNT_LF_18-62HN/RADIAL_BOND_LOG/RBL_M.1
 Presentation Format ranger_dss_radial
 Dataset Creation Fri Oct 14 10:18:43 2022
 Charted by Depth in Foot scaled 1:240

TT (3 ft.)		AMP (3 ft.)		0	RDAVVG	100	VDL (5 ft.)		1	RADIAL MAP	6
420	(usec)	150	0	(mV)	100	0	RADMAX	100	200	(usec)	1200
-20000 CCL		20000		0	AMP3FT (mV)	20	0	RADMIN	100		
0	GR (GAPI)	150									



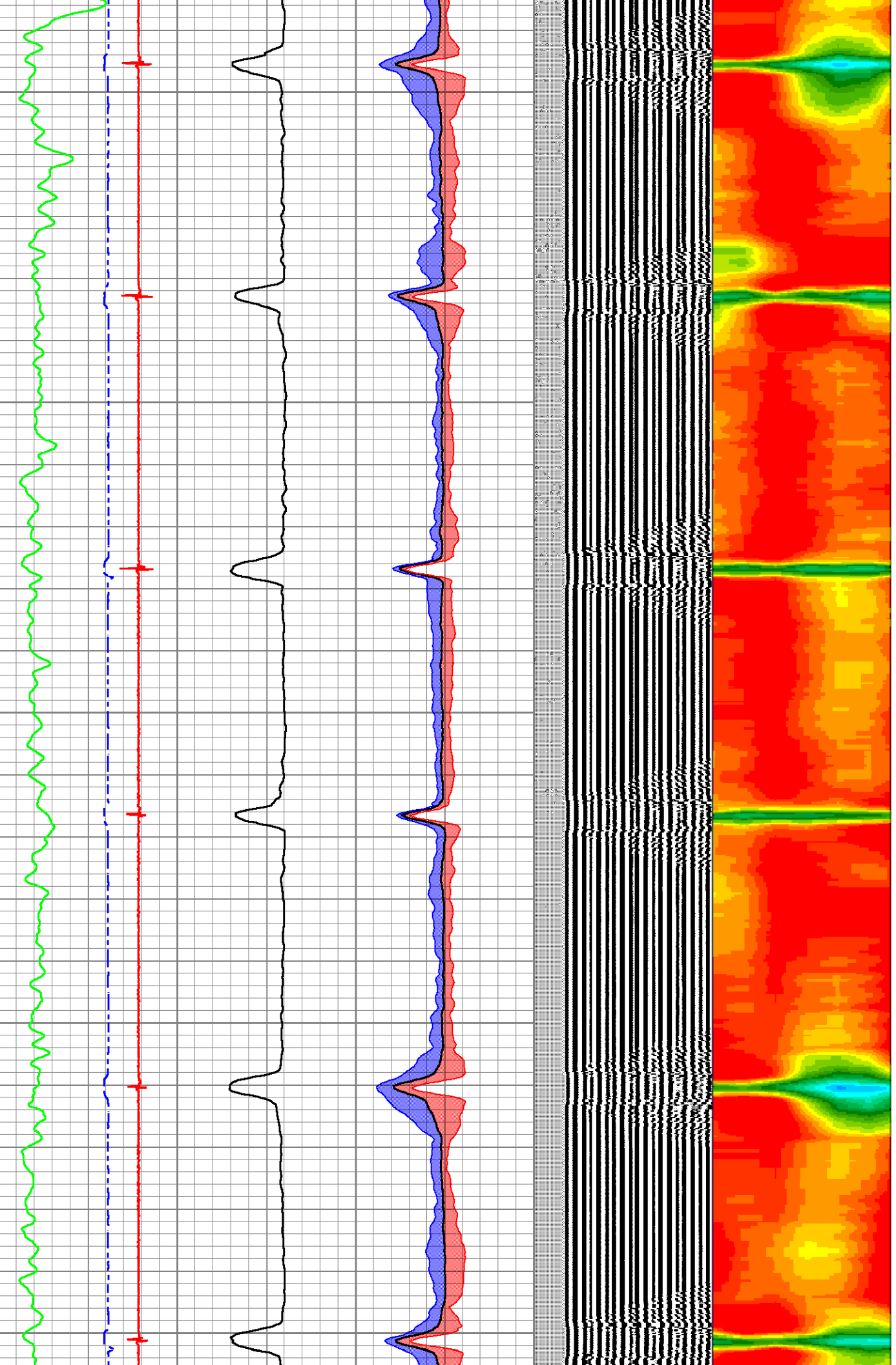
200

250

300

350

400

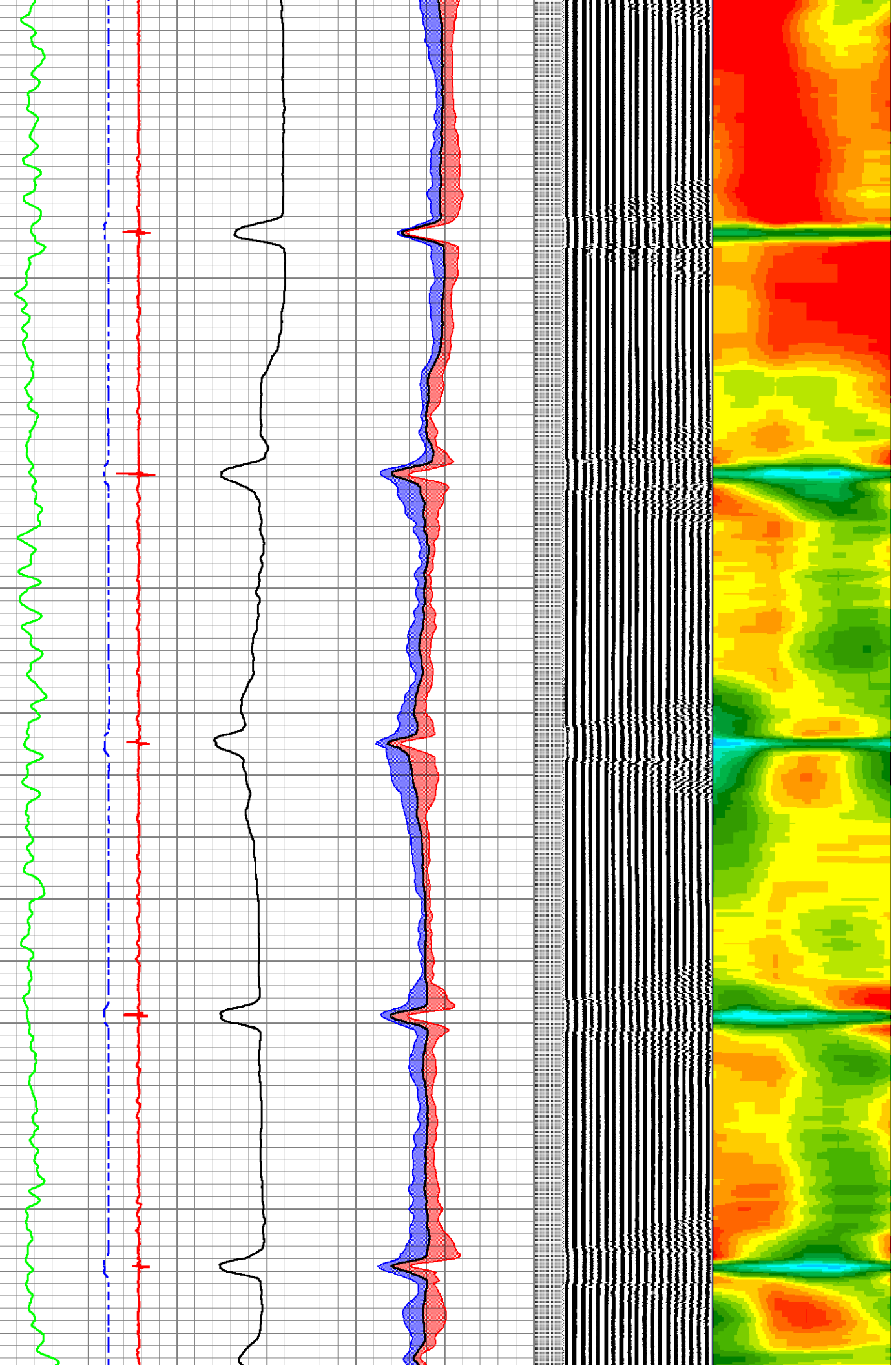


450

500

550

600

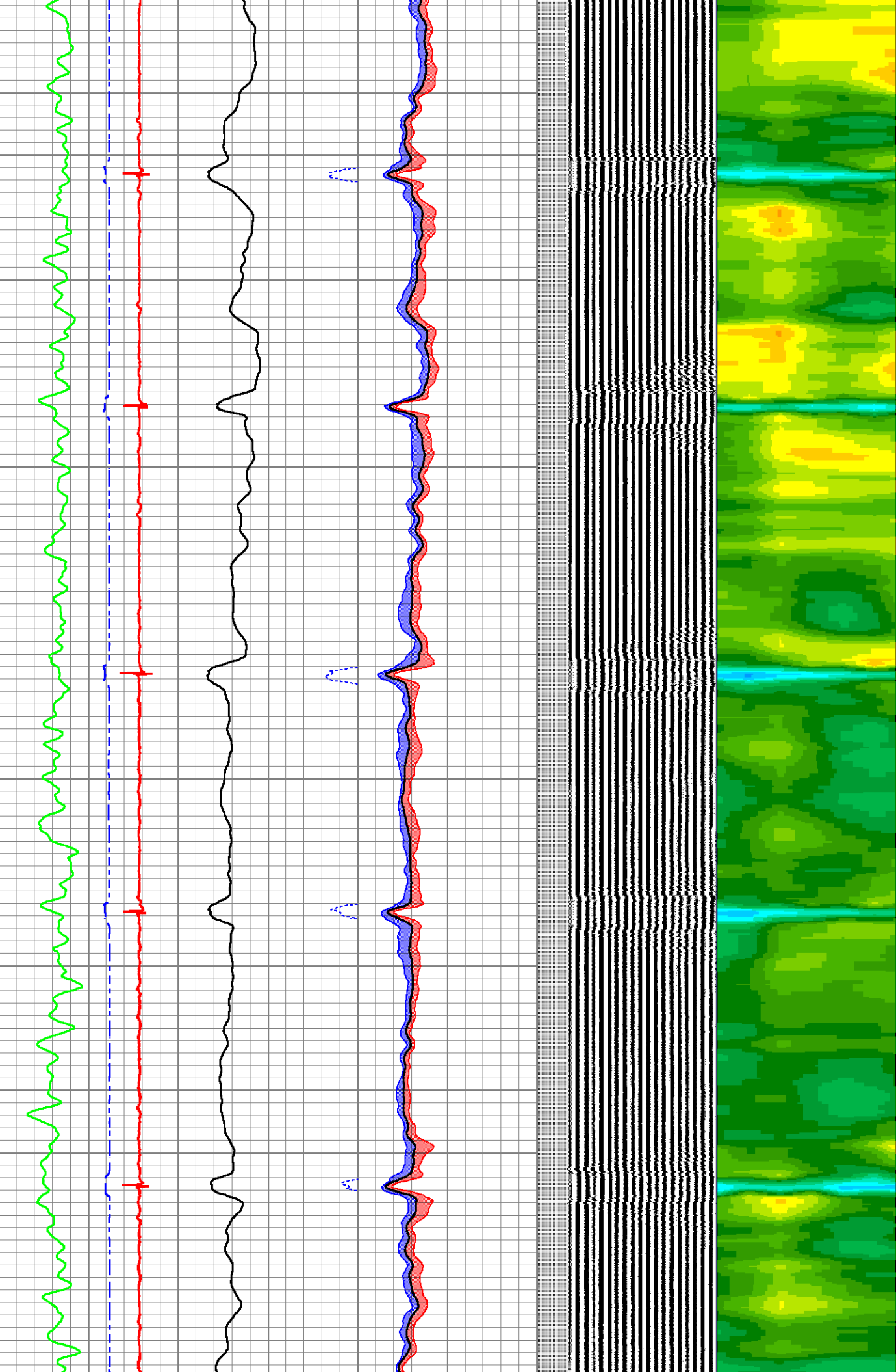


650

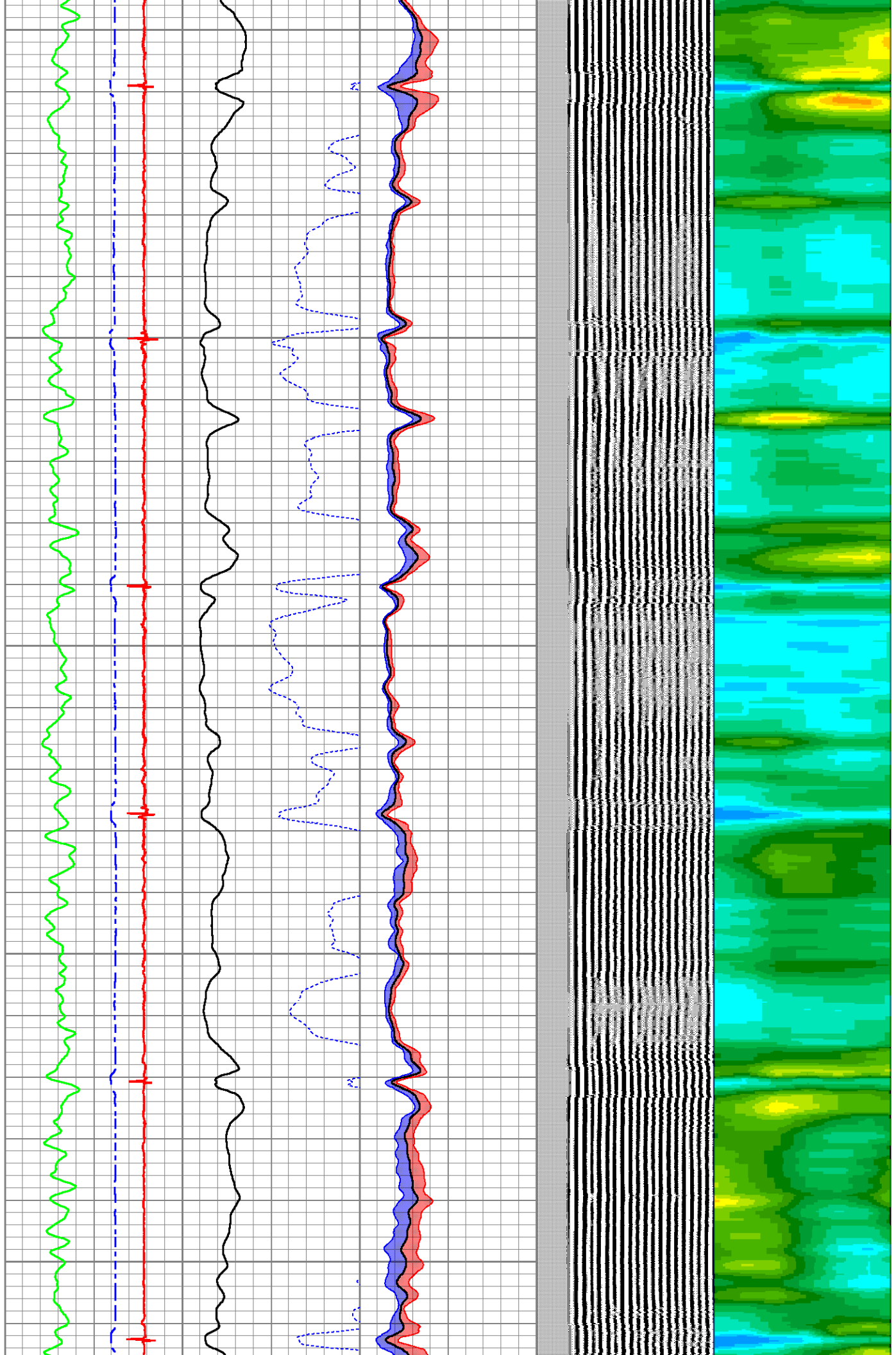
700

750

800



850
900
950
1000
1050

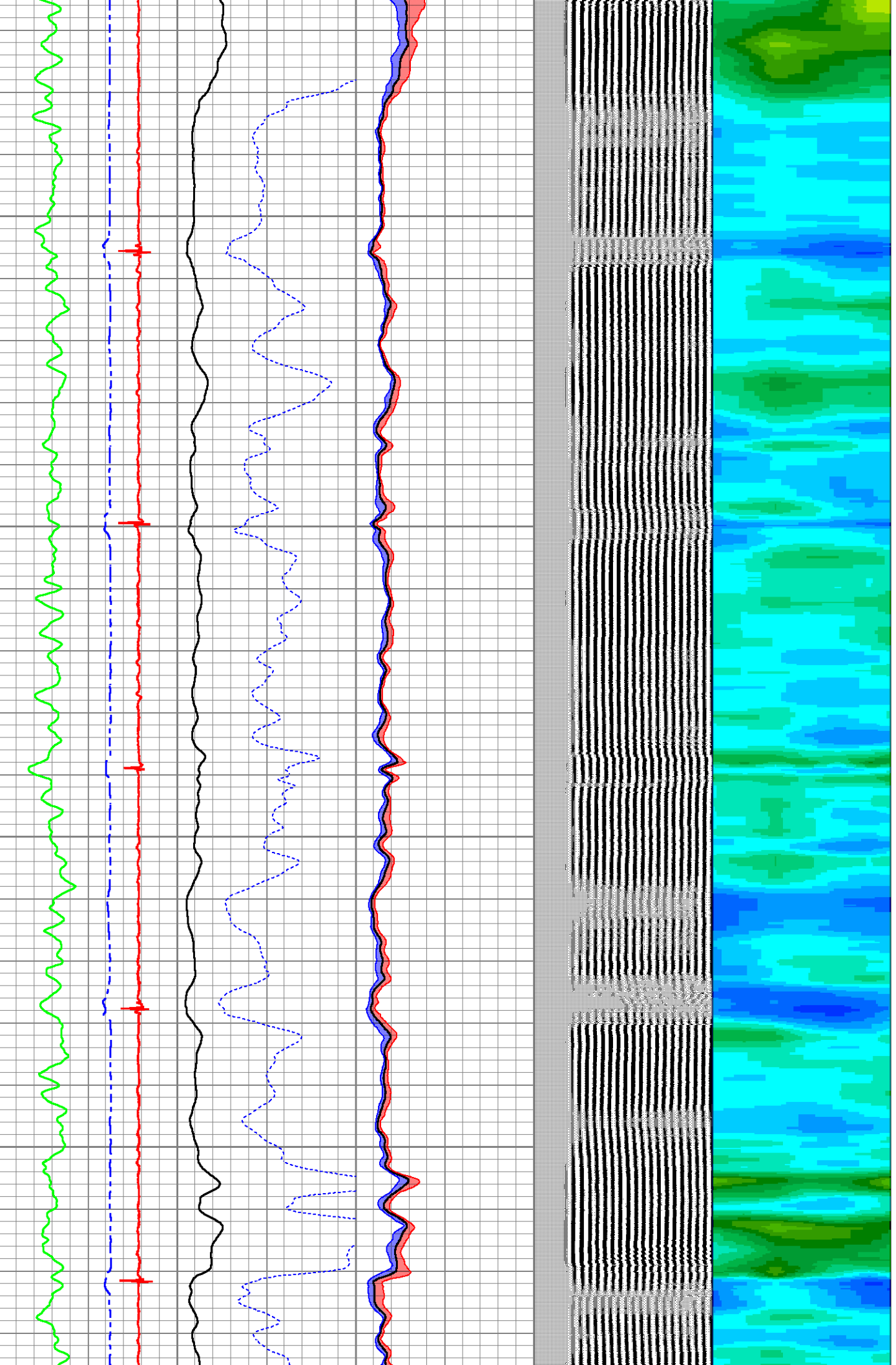


1100

1150

1200

1250



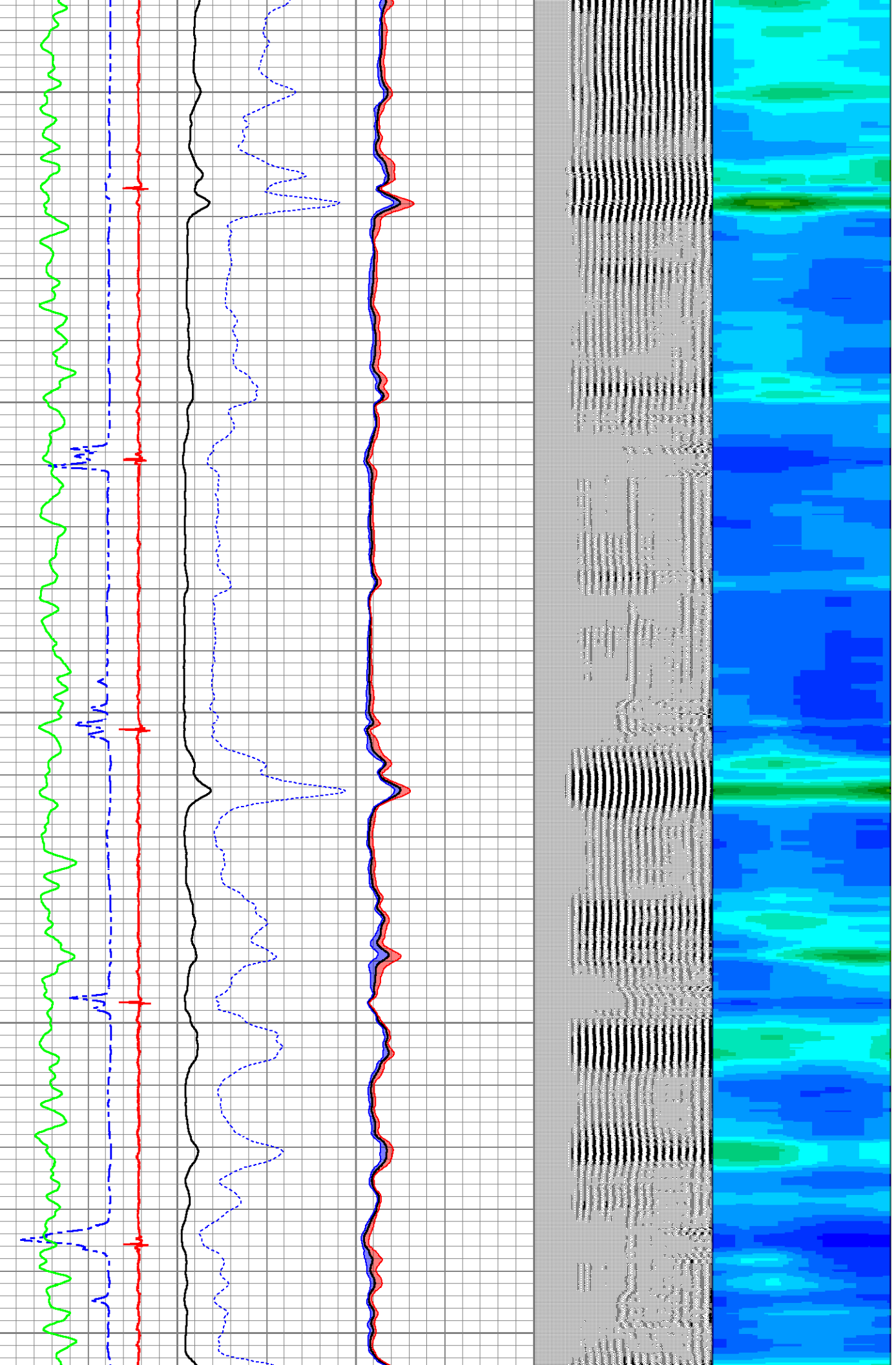
1300

1350

1400

1450

1500

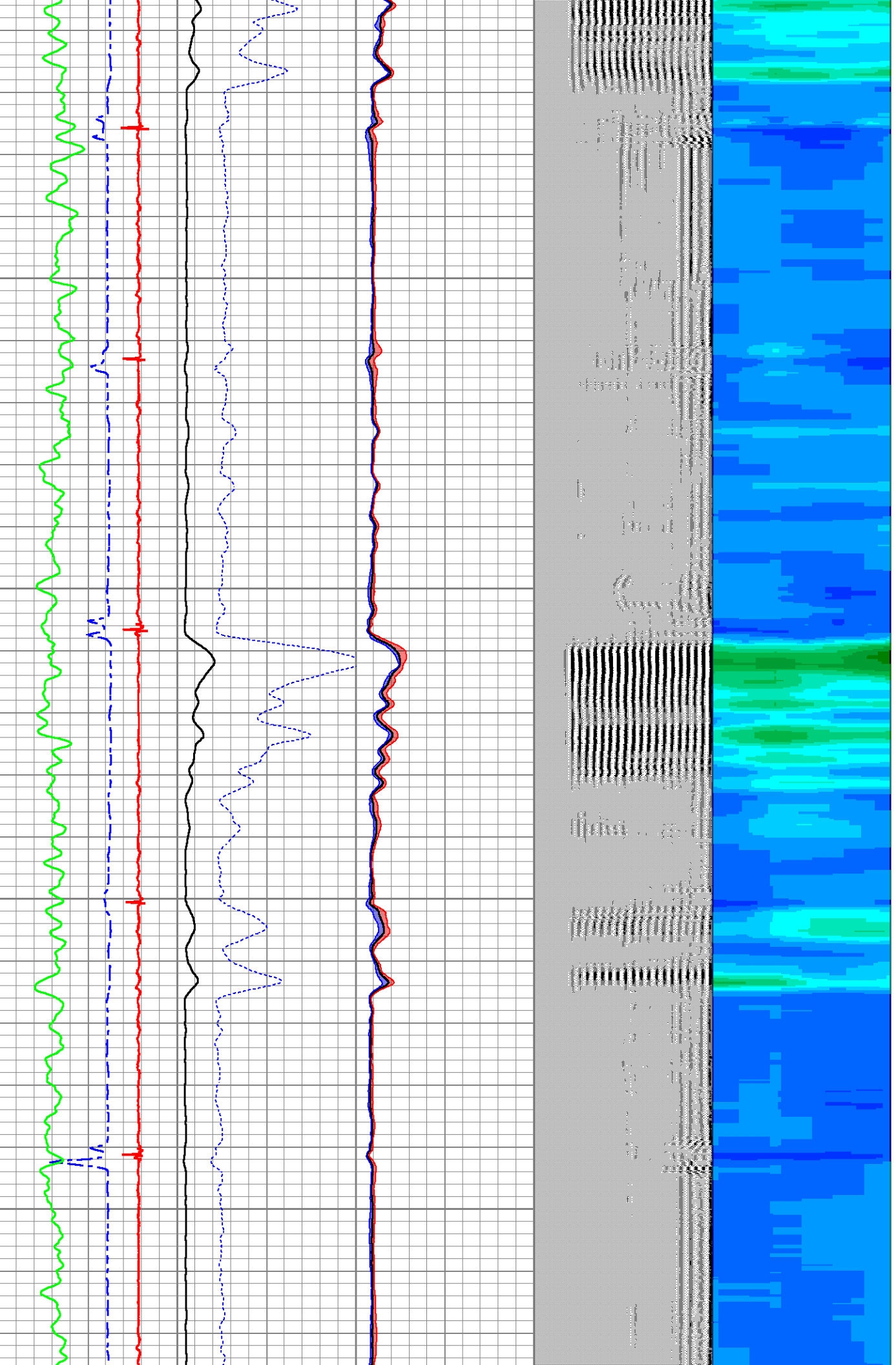


1550

1600

1650

1700

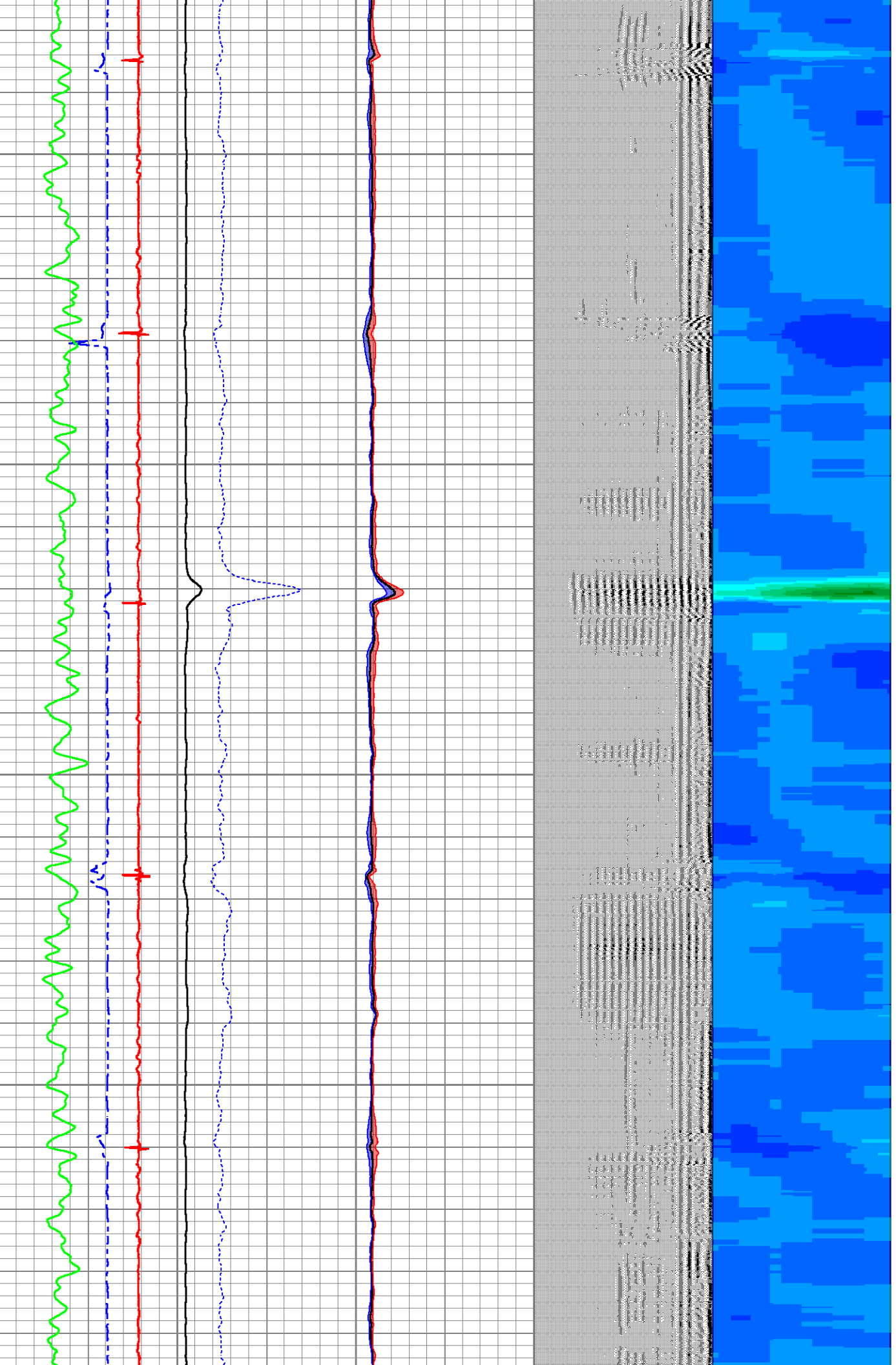


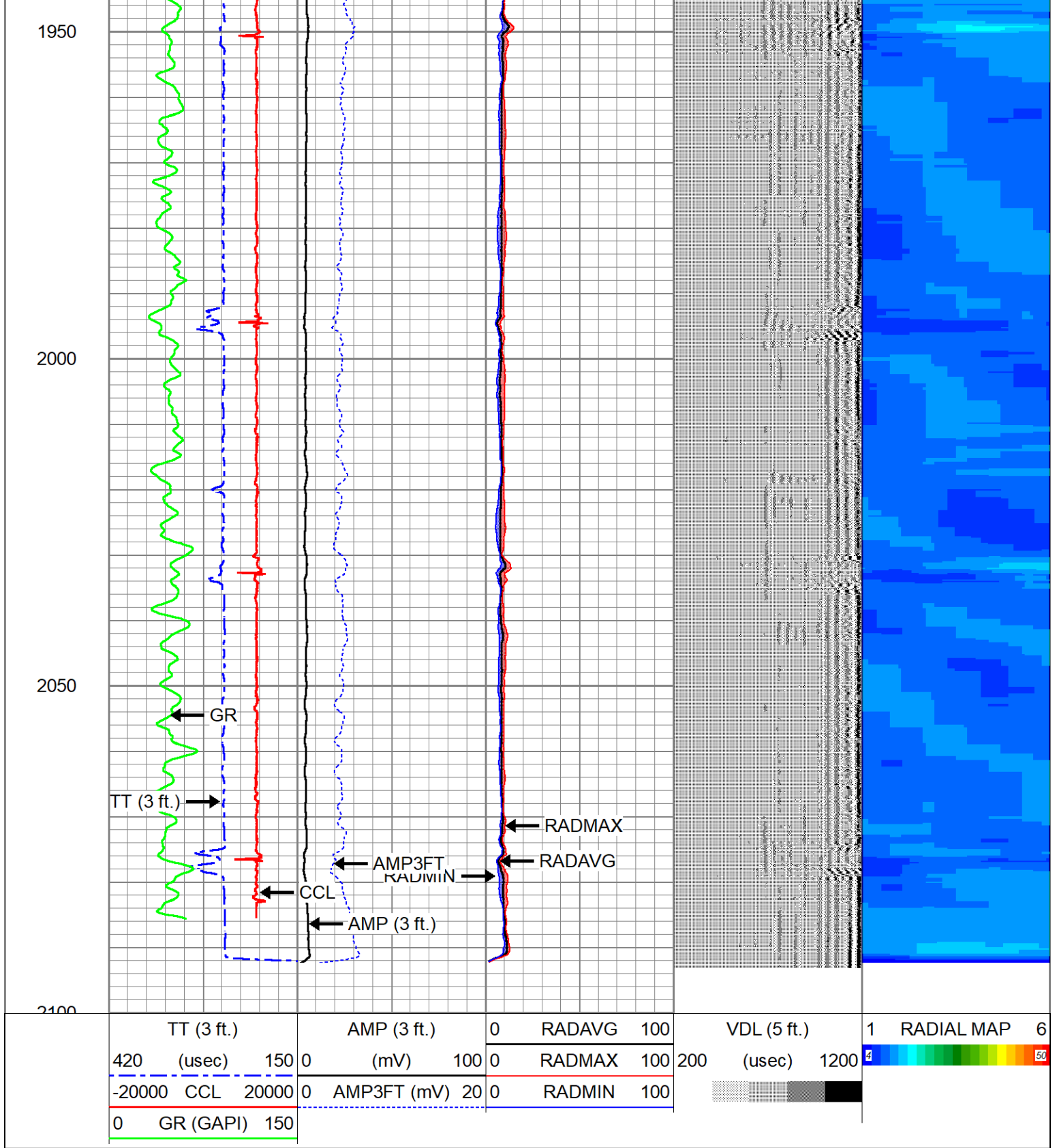
1750

1800

1850

1900





Company CHEVRON
Well HUNT LF18-62HN
Field DJ HORIZONTAL NIBRARA - 16950
County WELD
State COLORADO
Country U.S.A.