

POINT	NAD 83		NAD 27	
SURFACE HOLE LOCATION	N:	1279507.63	N:	279510.40
	E:	3258773.14	E:	2258924.43
	LAT:	N40.0969351	LAT:	N40.0969524
	LONG:	W104.5749853	LONG:	W104.5744686
LANDING POINT LOCATION	N:	1281919.1	N:	281921.84
	E:	3258246.08	E:	2258397.36
	LAT:	N40.1035696	LAT:	N40.1035870
	LONG:	W104.5767795	LONG:	W104.5762627
BOTTOM OF PRODUCTION ZONE	N:	1291527.70	N:	291530.35
	E:	3258034.73	E:	2258185.93
	LAT:	N40.1299513	LAT:	N40.1299689
	LONG:	W104.5771775	LONG:	W104.5766608
BOTTOM HOLE LOCATION	N:	1291617.68	N:	291620.33
	E:	3258032.75	E:	2258183.95
	LAT:	N40.1301983	LAT:	N40.1302159
	LONG:	W104.5771813	LONG:	W104.5766646

LEGEND

RANGE/TOWNSHIP LINE

SECTION LINE

QUARTER SECTION LINE

SIXTEENTH SECTION LINE

POINT OF INTERSECTION

MONUMENT FOUND

CALCULATED CORNER

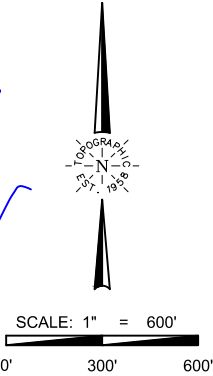
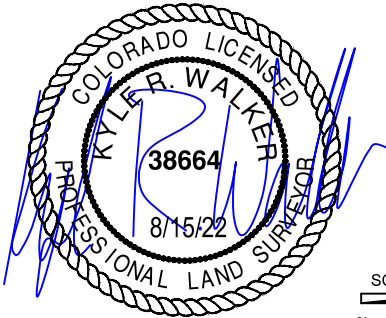
TOPOGRAPHIC

LOYALTY INNOVATION LEGACY

520 Stacy Court Ste B, Lafayette, CO 80026
303.666.0379 www.topographic.com

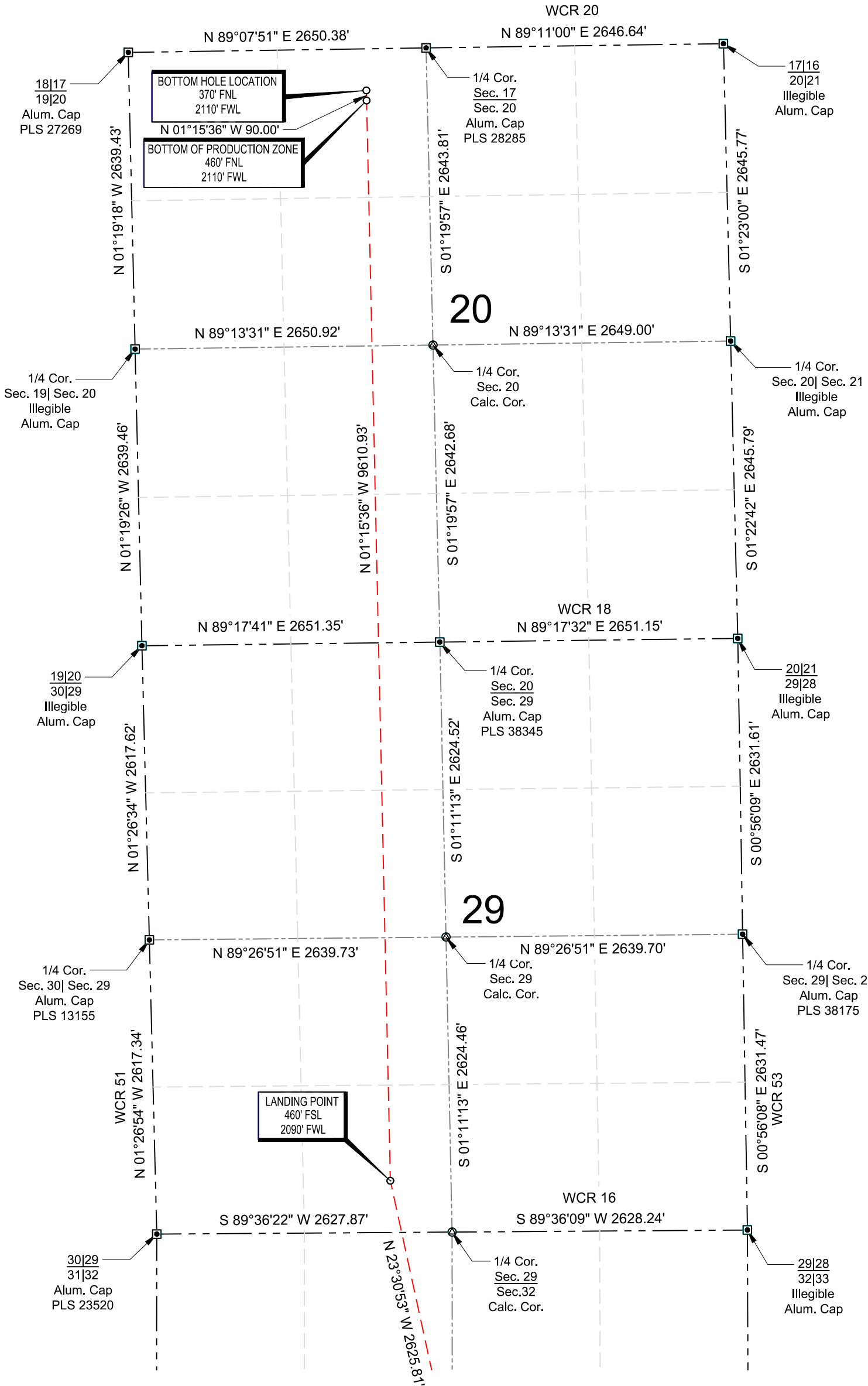
SURVEYOR'S STATEMENT
THE UNDERSIGNED HEREBY STATES THAT THE WELL LOCATION SHOWN HEREON WAS STAKED ON THE GROUND BASED ON EXISTING MONUMENTATION AND/OR PHYSICAL EVIDENCE FOUND IN THE FIELD AND IS CORRECT TO THE BEST OF MY KNOWLEDGE, INFORMATION AND BELIEF.

- NOTES**
- HORIZONTAL (NAD 83) AND VERTICAL (NAVD 88) DATUM IS BASED ON THE TRIMBLE VRS NETWORK. THE LINEAL UNITS OF MEASUREMENT ARE U.S. SURVEY FEET.
 - ALL DIRECTIONS, DISTANCES, AND DIMENSIONS SHOWN HEREON ARE BASED ON COORDINATES FROM THE "COLORADO COORDINATE SYSTEM OF 1983 NORTH ZONE" (TITLE 38, ARTICLE 52 C.R.S.).
 - ALL SECTION LINE DIMENSIONS SHOWN HEREON ARE BASED ON FIELD MEASUREMENTS OF EXISTING MONUMENTS AND/OR PHYSICAL EVIDENCE FOUND IN THE FIELD UNLESS OTHERWISE INDICATED.
 - PHYSICAL FEATURES SHOWN HEREON ARE FOR GRAPHICAL REPRESENTATION ONLY.
 - SEE FORM 2A FOR VISIBLE IMPROVEMENTS WITHIN 500' OF WELLHEAD.
 - DISTANCES TO NEAREST SECTION LINES ARE MEASURED PERPENDICULARLY.
 - THIS IS NOT A LAND SURVEY NOR LAND SURVEY PLAT.
- PDOP READING: 1.4 INSTRUMENT OPERATOR: KEVIN ROYER



VERDAD RESOURCES HARAMBE 2920 04H			
FIELD	09/14/2021	DRAFT	SW
REV 0	09/15/2022	CHECK	ZAK
SHEET : 1 OF 1		JOB: 138558	

WELL LOCATION MAP
S.H.L. SE/4 NW/4, SECTION 32 T02N R64W 6TH PM
LP SE/4 SW/4, SECTION 29 T02N R64W 6TH PM
BPZ NE/4 NW/4, SECTION 20 T02N R64W 6TH PM
BHL NE/4 NW/4, SECTION 20 T02N R64W 6TH PM
WELD COUNTY, COLORADO



LEGEND

- RANGE/TOWNSHIP LINE
- SECTION LINE
- QUARTER SECTION LINE
- SIXTEENTH SECTION LINE
- POINT OF INTERSECTION
- MONUMENT FOUND
- CALCULATED CORNER



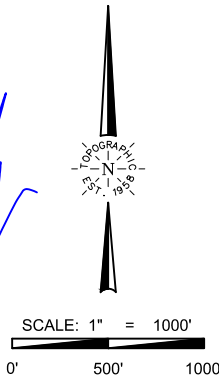
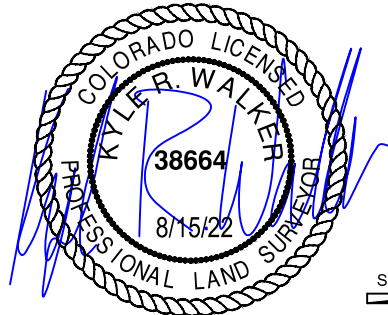
SURVEYOR'S STATEMENT

THE UNDERSIGNED HEREBY STATES THAT THE WELL LOCATION SHOWN HEREON WAS STAKED ON THE GROUND BASED ON EXISTING MONUMENTATION AND/OR PHYSICAL EVIDENCE FOUND IN THE FIELD AND IS CORRECT TO THE BEST OF MY KNOWLEDGE, INFORMATION AND BELIEF.

NOTES

- HORIZONTAL (NAD 83) AND VERTICAL (NAVD 88) DATUM IS BASED ON THE TRIMBLE VRS NETWORK. THE LINEAL UNITS OF MEASUREMENT ARE U.S. SURVEY FEET.
- ALL DIRECTIONS, DISTANCES, AND DIMENSIONS SHOWN HEREON ARE BASED ON COORDINATES FROM THE "COLORADO COORDINATE SYSTEM OF 1983 NORTH ZONE" (TITLE 38, ARTICLE 52 C.R.S.).
- ALL SECTION LINE DIMENSIONS SHOWN HEREON ARE BASED ON FIELD MEASUREMENTS OF EXISTING MONUMENTS AND/OR PHYSICAL EVIDENCE FOUND IN THE FIELD UNLESS OTHERWISE INDICATED.
- PHYSICAL FEATURES SHOWN HEREON ARE FOR GRAPHICAL REPRESENTATION ONLY.
- SEE FORM 2A FOR VISIBLE IMPROVEMENTS WITHIN 500' OF WELLHEAD.
- DISTANCES TO NEAREST SECTION LINES ARE MEASURED PERPENDICULARLY.
- THIS IS NOT A LAND SURVEY NOR LAND SURVEY PLAT.

PDOP READING: 1.4 INSTRUMENT OPERATOR: KEVIN ROYER



VERDAD RESOURCES
HARAMBE 2920 04H

FIELD	09/14/2021	DRAFT	SW
REV 0	09/15/2022	CHECK	ZAK
SHEET :	1 OF 1	JOB:	138558

WELL LOCATION MAP
S.H.L. SE/4 NW/4, SECTION 32 T02N R64W 6TH PM
LP SE/4 SW/4, SECTION 29 T02N R64W 6TH PM
BPZ NE/4 NW/4, SECTION 20 T02N R64W 6TH PM
BHL NE/4 NW/4, SECTION 20 T02N R64W 6TH PM
WELD COUNTY, COLORADO