

LEGEND

- = OIL & GAS LOCATION
- = WORKING PAD SURFACE
- = BLOCK GROUP % MINOR POP > COUNTY % MINOR POP
- = RESIDENTIAL BUILDING UNIT



GMT EXPLORATION COMPANY, LLC

CINNAMON 6-64 19-7 PAD  
S 1/2 NW 1/4, SECTION 19, T6S, R64W, 6th P.M.  
ELBERT COUNTY, COLORADO

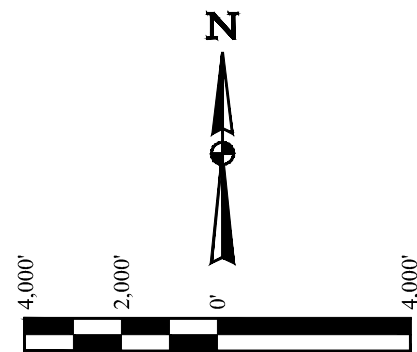
SURVEYED BY	GREG WEIMER, J.W.	05-05-22	SCALE
DRAWN BY	P.M.	05-11-22	1" = 500'

DISPROPORTIONATELY IMPACTED COMMUNITIES MAP



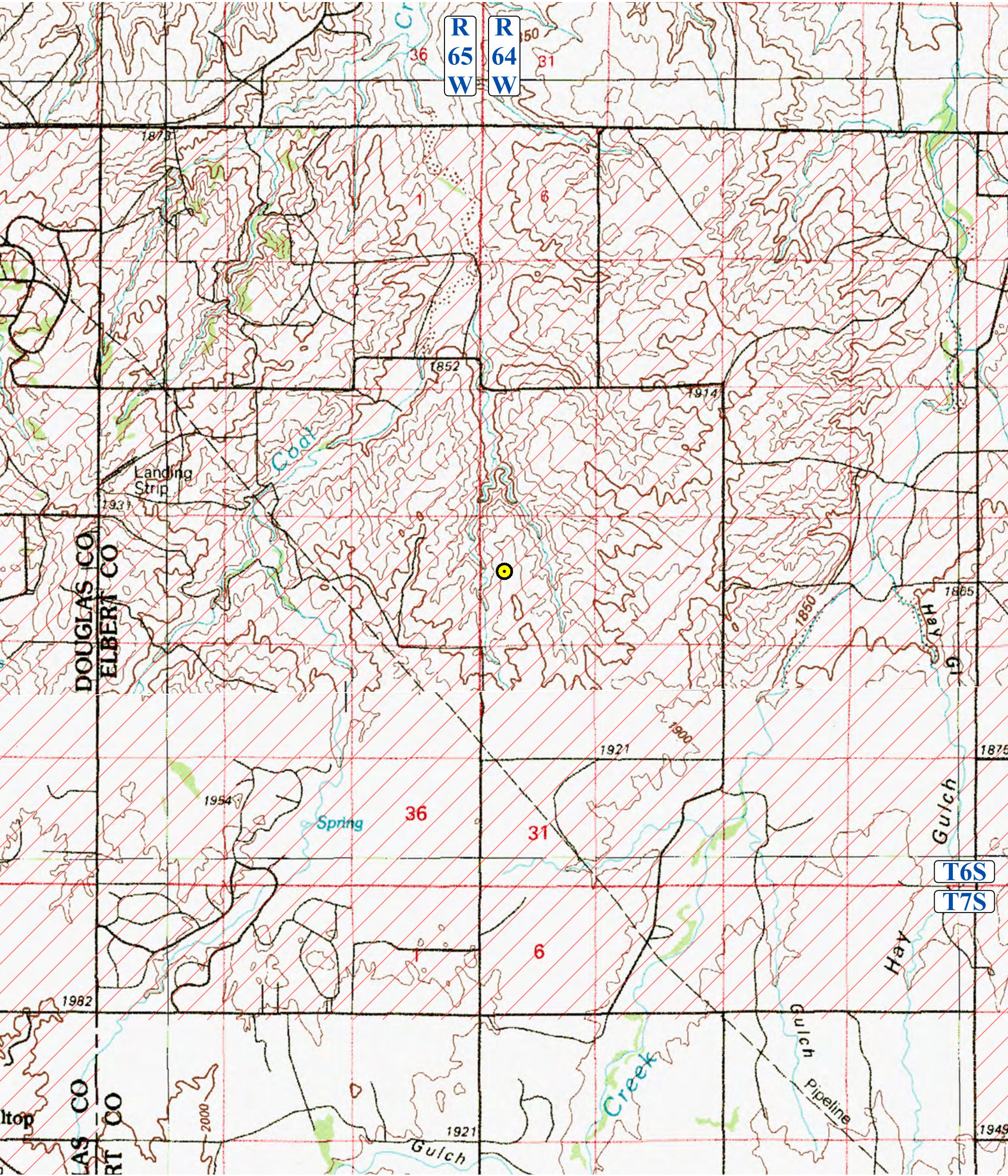
UELS, LLC  
Corporate Office \* 85 South 200 East  
Vernal, UT 84078 \* (435) 789-1017





LEGEND

- = PROPOSED OIL & GAS LOCATION
- = BLOCK GROUP % MINOR POP > COUNTY % MINOR POP



GMT EXPLORATION COMPANY, LLC

CINNAMON 6-64 19-7 PAD  
S 1/2 NW 1/4, SECTION 19, T6S, R64W, 6th P.M.  
ELBERT COUNTY, COLORADO

SURVEYED BY	GREG WEIMER, J.W.	05-05-22	SCALE
DRAWN BY	P.M.	05-11-22	1" = 4,000'

DISPROPORTIONATELY IMPACTED COMMUNITIES MAP



UELS, LLC  
Corporate Office \* 85 South 200 East  
Vernal, UT 84078 \* (435) 789-1017