

Elbert County, Colorado, Western Part

9—Bresser-Truckton sandy loams, 8 to 25 percent slopes

Map Unit Setting

National map unit symbol: jnl8

Elevation: 5,300 to 6,400 feet

Mean annual precipitation: 14 to 17 inches

Frost-free period: 125 to 180 days

Farmland classification: Not prime farmland

Map Unit Composition

Bresser and similar soils: 45 percent

Truckton and similar soils: 35 percent

Minor components: 20 percent

Estimates are based on observations, descriptions, and transects of the mapunit.

Description of Bresser

Setting

Landform: Valley sides, ridges, hills

Landform position (two-dimensional): Backslope, footslope

Landform position (three-dimensional): Side slope, crest

Down-slope shape: Linear

Across-slope shape: Linear

Parent material: Alluvium and/or arkosic residuum weathered from sedimentary rock

Typical profile

H1 - 0 to 7 inches: sandy loam

H2 - 7 to 20 inches: sandy clay loam

H3 - 20 to 29 inches: sandy loam

H4 - 29 to 60 inches: very gravelly loamy coarse sand

Properties and qualities

Slope: 8 to 20 percent

Depth to restrictive feature: More than 80 inches

Drainage class: Well drained

Runoff class: Medium

Capacity of the most limiting layer to transmit water

(Ksat): Moderately high to high (0.60 to 2.00 in/hr)

Depth to water table: More than 80 inches

Frequency of flooding: None

Frequency of ponding: None

Calcium carbonate, maximum content: 10 percent

Available water supply, 0 to 60 inches: Low (about 5.7 inches)

Interpretive groups

Land capability classification (irrigated): 6e

Land capability classification (nonirrigated): 6e

Hydrologic Soil Group: B

Ecological site: R049XB210CO - Sandy Foothill

Hydric soil rating: No

Description of Truckton

Setting

Landform: Hills, ridges, valley sides

Landform position (two-dimensional): Backslope, footslope

Landform position (three-dimensional): Side slope, crest

Down-slope shape: Linear

Across-slope shape: Linear

Parent material: Alluvium and/or arkosic residuum weathered from
sedimentary rock

Typical profile

H1 - 0 to 5 inches: sandy loam

H2 - 5 to 15 inches: sandy loam

H3 - 15 to 60 inches: sandy loam

Properties and qualities

Slope: 8 to 25 percent

Depth to restrictive feature: More than 80 inches

Drainage class: Well drained

Runoff class: Low

Capacity of the most limiting layer to transmit water (Ksat): High
(2.00 to 6.00 in/hr)

Depth to water table: More than 80 inches

Frequency of flooding: None

Frequency of ponding: None

Available water supply, 0 to 60 inches: Low (about 5.8 inches)

Interpretive groups

Land capability classification (irrigated): None specified

Land capability classification (nonirrigated): 6e

Hydrologic Soil Group: B

Ecological site: R049XB210CO - Sandy Foothill

Hydric soil rating: No

Minor Components

Ascalon

Percent of map unit: 8 percent

Hydric soil rating: No

Cushman

Percent of map unit: 7 percent

Hydric soil rating: No

Kutch

Percent of map unit: 4 percent

Hydric soil rating: No

Aquic haplustoll

Percent of map unit: 1 percent

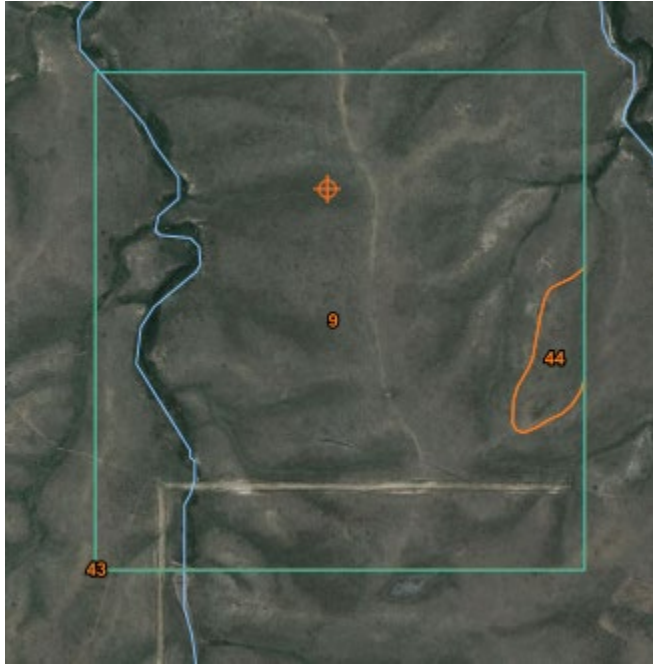
Landform: Swales

Hydric soil rating: Yes

Data Source Information

Soil Survey Area: Elbert County, Colorado, Western Part

Survey Area Data: Version 17, Aug 31, 2021

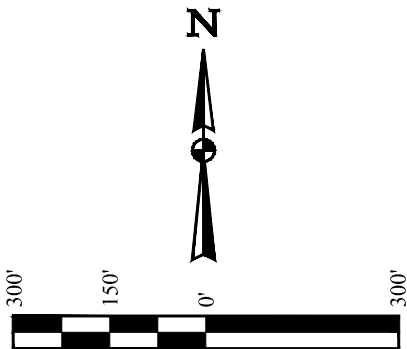


Wellpad and Access 9

Elbert County, Colorado, Western Part



Map unit symbol and soil name	Ecological Site, Plant Association, or Habitat Type	Total dry-weight production			Characteristic rangeland or forest understory vegetation	Composition	Rangeland	Forest understory
		Favorable year	Normal year	Unfavorable year				
		<i>Lb/ac</i>	<i>Lb/ac</i>	<i>Lb/ac</i>		<i>Pct dry wt</i>	<i>Pct dry wt</i>	
9—Bresser-Truckton sandy loams, 8 to 25 percent slopes								
Bresser	Sandy Foothill (R049XB210CO)	1,800	1,500	1,000	prairie sandreed	20		
					blue grama	15		
					little bluestem	10		
					needleandthread	10		
					prairie Junegrass	10		
					sideoats grama	10		
					prairie sagewort	5		
					sand bluestem	5		
					sand dropseed	5		
					western wheatgrass	5		
					Fendler threeawn	3		
					sedge	2		
Truckton	Sandy Foothill (R049XB210CO)	1,500	1,200	800	blue grama	20		
					prairie sandreed	20		
					needleandthread	10		
					sand dropseed	10		
					sideoats grama	10		
					sand sagebrush	5		
					sedge	5		
					western wheatgrass	5		
					sand bluestem	2		



LEGEND

- - - = OIL & GAS LOCATION
- = WORKING PAD SURFACE
- [Pink Box] = BRESSER-TRUCKTON SANDY LOAMS, 8 TO 25 PERCENT SLOPES (18,531 ACRES)
- [Blue Box] = WELD LOAM, 4 TO 8 PERCENT SLOPES (0,000 ACRES)



REV: 1 05-24-22 P.M. (OIL & GAS LOCATION UPDATE)

GMT EXPLORATION COMPANY, LLC

CINNAMON 6-64 19-7 PAD
S 1/2 NW 1/4, SECTION 19, T6S, R64W, 6th P.M.
ELBERT COUNTY, COLORADO

SURVEYED BY	GREG WEIMER, J.W.	05-05-22	SCALE
DRAWN BY	P.M.	05-11-22	1" = 300'

SOILS SITE DIAGRAM



UELS, LLC
Corporate Office * 85 South 200 East
Vernal, UT 84078 * (435) 789-1017