

POINT	NAD 83		NAD 27	
SURFACE HOLE LOCATION	N:	1279507.69	N:	279510.45
	E:	3258725.14	E:	2258876.43
	LAT:	N40.0969366	LAT:	N40.0969539
	LONG:	W104.5751569	LONG:	W104.5746402
LANDING POINT LOCATION	N:	1281908.03	N:	281910.76
	E:	3256636.27	E:	2256787.59
	LAT:	N40.1035851	LAT:	N40.1036025
	LONG:	W104.5825345	LONG:	W104.5820175
BOTTOM OF PRODUCTION ZONE	N:	1291502.97	N:	291505.61
	E:	3256404.48	E:	2256555.72
	LAT:	N40.1299298	LAT:	N40.1299474
	LONG:	W104.5830084	LONG:	W104.5824914
BOTTOM HOLE LOCATION	N:	1291592.94	N:	291595.58
	E:	3256402.31	E:	2256553.55
	LAT:	N40.1301769	LAT:	N40.1301945
	LONG:	W104.5830128	LONG:	W104.5824959

LEGEND

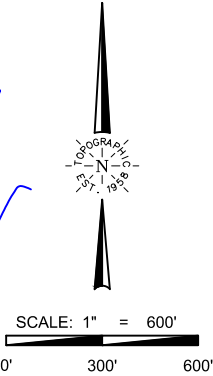
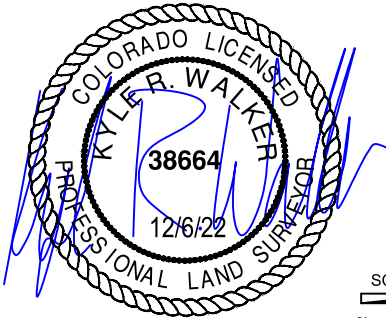
- RANGE/TOWNSHIP LINE
- SECTION LINE
- QUARTER SECTION LINE
- SIXTEENTH SECTION LINE
- POINT OF INTERSECTION
- MONUMENT FOUND
- CALCULATED CORNER

TOPOGRAPHIC
LOYALTY INNOVATION LEGACY

520 Stacy Court Ste B, Lafayette, CO 80026
303.666.0379 www.topographic.com

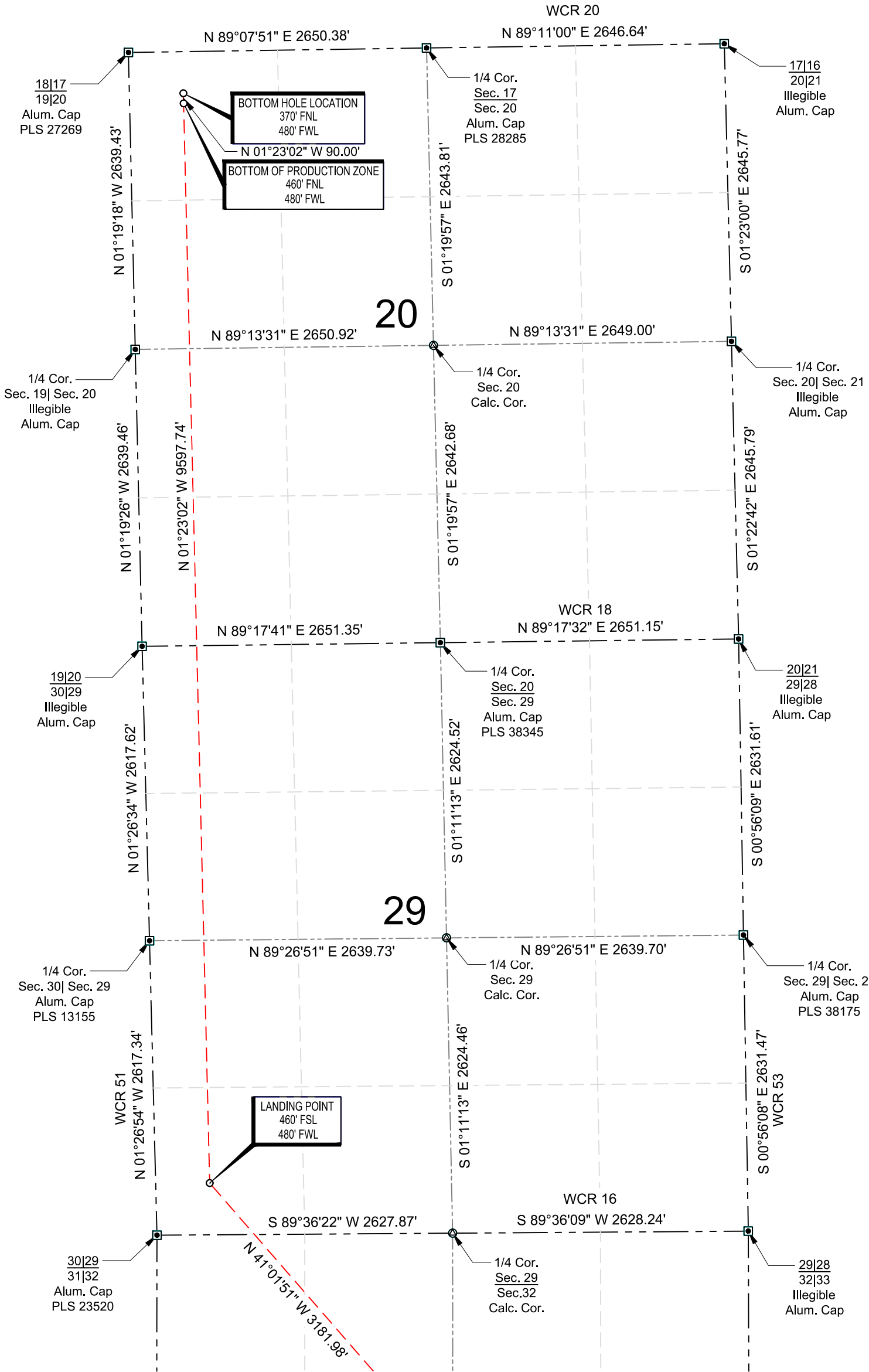
SURVEYOR'S STATEMENT
THE UNDERSIGNED HEREBY STATES THAT THE WELL LOCATION SHOWN HEREON WAS STAKED ON THE GROUND BASED ON EXISTING MONUMENTATION AND/OR PHYSICAL EVIDENCE FOUND IN THE FIELD AND IS CORRECT TO THE BEST OF MY KNOWLEDGE, INFORMATION AND BELIEF.

- NOTES**
- HORIZONTAL (NAD 83) AND VERTICAL (NAVD 88) DATUM IS BASED ON THE TRIMBLE VRS NETWORK. THE LINEAL UNITS OF MEASUREMENT ARE U.S. SURVEY FEET.
 - ALL DIRECTIONS, DISTANCES, AND DIMENSIONS SHOWN HEREON ARE BASED ON COORDINATES FROM THE "COLORADO COORDINATE SYSTEM OF 1983 NORTH ZONE" (TITLE 38, ARTICLE 52 C.R.S.).
 - ALL SECTION LINE DIMENSIONS SHOWN HEREON ARE BASED ON FIELD MEASUREMENTS OF EXISTING MONUMENTS AND/OR PHYSICAL EVIDENCE FOUND IN THE FIELD UNLESS OTHERWISE INDICATED.
 - PHYSICAL FEATURES SHOWN HEREON ARE FOR GRAPHICAL REPRESENTATION ONLY.
 - SEE FORM 2A FOR VISIBLE IMPROVEMENTS WITHIN 500' OF WELLHEAD.
 - DISTANCES TO NEAREST SECTION LINES ARE MEASURED PERPENDICULARLY.
 - THIS IS NOT A LAND SURVEY NOR LAND SURVEY PLAT.
- PDOP READING: 1.4 INSTRUMENT OPERATOR: KEVIN ROYER



VERDAD RESOURCES KIWI 2920 01H			
FIELD	09/14/2021	DRAFT	SW
REV 1	12/06/2022	CHECK	ZAK
SHEET : 1 OF 1		JOB: 138558	

WELL LOCATION MAP
S.H.L. SE/4 NE/4, SECTION 32 T02N R64W 6TH PM
LP SW/4 SW/4, SECTION 29 T02N R64W 6TH PM
BPZ NW/4 NW/4, SECTION 20 T02N R64W 6TH PM
BHL NW/4 NW/4, SECTION 20 T02N R64W 6TH PM
WELD COUNTY, COLORADO



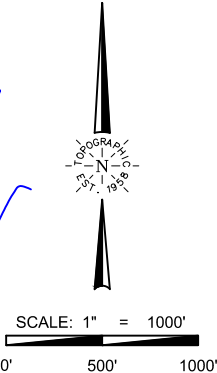
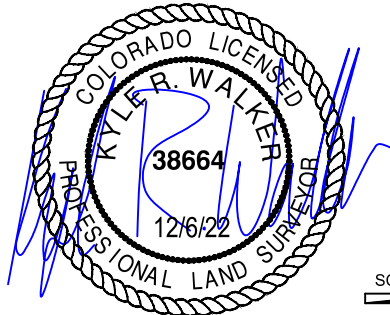
LEGEND

- RANGE/TOWNSHIP LINE
- SECTION LINE
- QUARTER SECTION LINE
- SIXTEENTH SECTION LINE
- POINT OF INTERSECTION
- MONUMENT FOUND
- CALCULATED CORNER

TOPOGRAPHIC
LOYALTY INNOVATION LEGACY
520 Stacy Court Ste B, Lafayette, CO 80026
303.666.0379 www.topographic.com

SURVEYOR'S STATEMENT
THE UNDERSIGNED HEREBY STATES THAT THE WELL LOCATION SHOWN HEREON WAS STAKED ON THE GROUND BASED ON EXISTING MONUMENTATION AND/OR PHYSICAL EVIDENCE FOUND IN THE FIELD AND IS CORRECT TO THE BEST OF MY KNOWLEDGE, INFORMATION AND BELIEF.

- NOTES**
- HORIZONTAL (NAD 83) AND VERTICAL (NAVD 88) DATUM IS BASED ON THE TRIMBLE VRS NETWORK. THE LINEAL UNITS OF MEASUREMENT ARE U.S. SURVEY FEET.
 - ALL DIRECTIONS, DISTANCES, AND DIMENSIONS SHOWN HEREON ARE BASED ON COORDINATES FROM THE "COLORADO COORDINATE SYSTEM OF 1983 NORTH ZONE" (TITLE 38, ARTICLE 52 C.R.S.).
 - ALL SECTION LINE DIMENSIONS SHOWN HEREON ARE BASED ON FIELD MEASUREMENTS OF EXISTING MONUMENTS AND/OR PHYSICAL EVIDENCE FOUND IN THE FIELD UNLESS OTHERWISE INDICATED.
 - PHYSICAL FEATURES SHOWN HEREON ARE FOR GRAPHICAL REPRESENTATION ONLY.
 - SEE FORM 2A FOR VISIBLE IMPROVEMENTS WITHIN 500' OF WELLHEAD.
 - DISTANCES TO NEAREST SECTION LINES ARE MEASURED PERPENDICULARLY.
 - THIS IS NOT A LAND SURVEY NOR LAND SURVEY PLAT.
- PDOP READING: 1.4 INSTRUMENT OPERATOR: KEVIN ROYER



VERDAD RESOURCES
KIWI 2920 01H

FIELD	09/14/2021	DRAFT	SW
REV 1	12/06/2022	CHECK	ZAK
SHEET :	1 OF 1	JOB:	138558

WELL LOCATION MAP
S.H.L. SE/4 NE/4, SECTION 32 T02N R64W 6TH PM
LP SW/4 SW/4, SECTION 29 T02N R64W 6TH PM
BPZ NW/4 NW/4, SECTION 20 T02N R64W 6TH PM
BHL NW/4 NW/4, SECTION 20 T02N R64W 6TH PM
WELD COUNTY, COLORADO