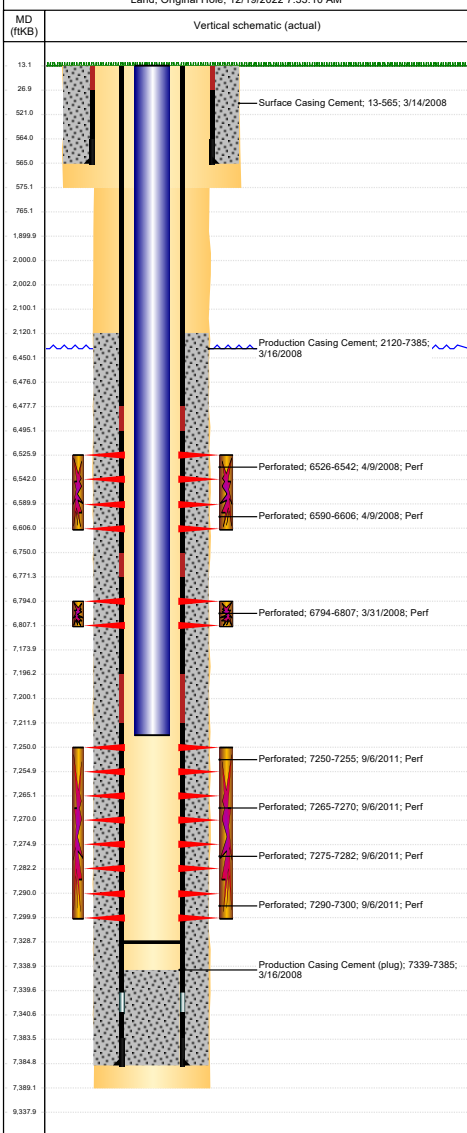




# P&A Wellbore For State

Well Name: SPIKE STATE CC30-18

Land, Original Hole, 12/19/2022 7:33:10 AM



Well Header									
Surface UWI 0512325433			Business Unit Rockies		Gov Auth Dist			Prod Tree Loc Land	
Orig. KB to Gnd (ft) 13.00			Original Spud Date 3/13/2008		Abandon Date		Well Sub-Status SI		High Pre N
Comment									
Surface Location (Congressional)									
Quarter NE	Quarter NW	Section 30	Township 4	N	Range 63	Rng E/W W	Latitude (°) 40.286903783	Longitude (°) -104.480435325	
Wellbore Sections									
Section Des			Hole Size (in)		Act Top (ftKB)		Act Btm (ftKB)		
SURFACE			12 1/4		13.0		575.0		
PRODUCTION			7 7/8		575.0		7,389.0		
Casing Strings									
Csg Des		Run Date		OD (in)		Wt/Len (lb/ft)		Grade	
Surface		3/14/2008		8 5/8		24.00		J-55	
Production Casing		3/16/2008		4 1/2		11.60		M-80	
Top Depth (MD) (ftKB)								13 565	
7385									
Cement									
Des			Start Date			Top (ftKB)		Btm (ftKB)	
Surface Casing Cement			3/14/2008			13.0		565.0	
Production Casing Cement			3/16/2008			2,120.0		7,385.0	
Zone Statuses									
Zone Name		Status Date		Status		Fluid Type		Job	
NIOBRARA CODELL		4/11/2008		PR				DRILLING/COMPLETION - ORIGINAL 3/13/2008 13:31	
J SAND		10/13/2011		PR				DRILLING/COMPLETION - ORIGINAL 3/13/2008 13:31	
								RECOMPLETION, 8/31/2011 06:00	
Perforation Data									
Linked Zone		Explosive Type		Entered Shot Total		Top (ftKB)		Btm (ftKB)	
NIOBRARA, Original Hole		A		64		6,526.0		6,542.0	
NIOBRARA, Original Hole		B		64		6,590.0		6,606.0	
CODELL, Original Hole				52		6,794.0		6,807.0	
J SAND, Original Hole				20		7,250.0		7,255.0	
J SAND, Original Hole				20		7,265.0		7,270.0	
J SAND, Original Hole				28		7,275.0		7,282.0	
J SAND, Original Hole				40		7,290.0		7,300.0	
Stimulation Intervals									
Zone		Start Date		Top (ftKB)		Btm (ftKB)			
NIOBRARA, Original Hole		4/9/2008		6,526.0		6,606.0			
CODELL, Original Hole		4/9/2008		6,794.0		6,807.0			
J SAND, Original Hole		9/24/2011		7,250.0		7,300.0			
Other In Hole									
Run Date		Des			Make		OD (in)		Top (ftKB)
									Btm (ftKB)
Logs									
Date		Type				Depth Top (MD) (ftKB)		Btm (ftKB)	
3/16/2008		Caliper/Comp. Density/Neutron/GR/SP/ML				2,700		7,364.0	
3/16/2008		DIL/GR/SP/Caliper				565		7,384.0	
3/27/2008		CBL/CCL/GR				2,030		7,290.0	
Plug Back Total Depths									
Date		Type		Com				P&TD (ftKB)	
9/28/2011		FILL		SLICKLINE MEASUREMENT.				7,294	
9/28/2011		FILL		BAIL FILL, TBG TALLY MEASUREMENT.				7,329	