

VERDAD RESOURCES

**WATTENBERG FIELD
2N-64W-28 GEORGENE PAD
GEORGENE 2833-07H**

Plan B

Plan: Design #3

Standard Planning Report

28 October, 2022

Project: WATTENBERG FIELD
Site: 2N-64W-28 GEORGENE PAD
Well: GEORGENE 2833-07H
Wellbore: Plan B
Design: Design #3

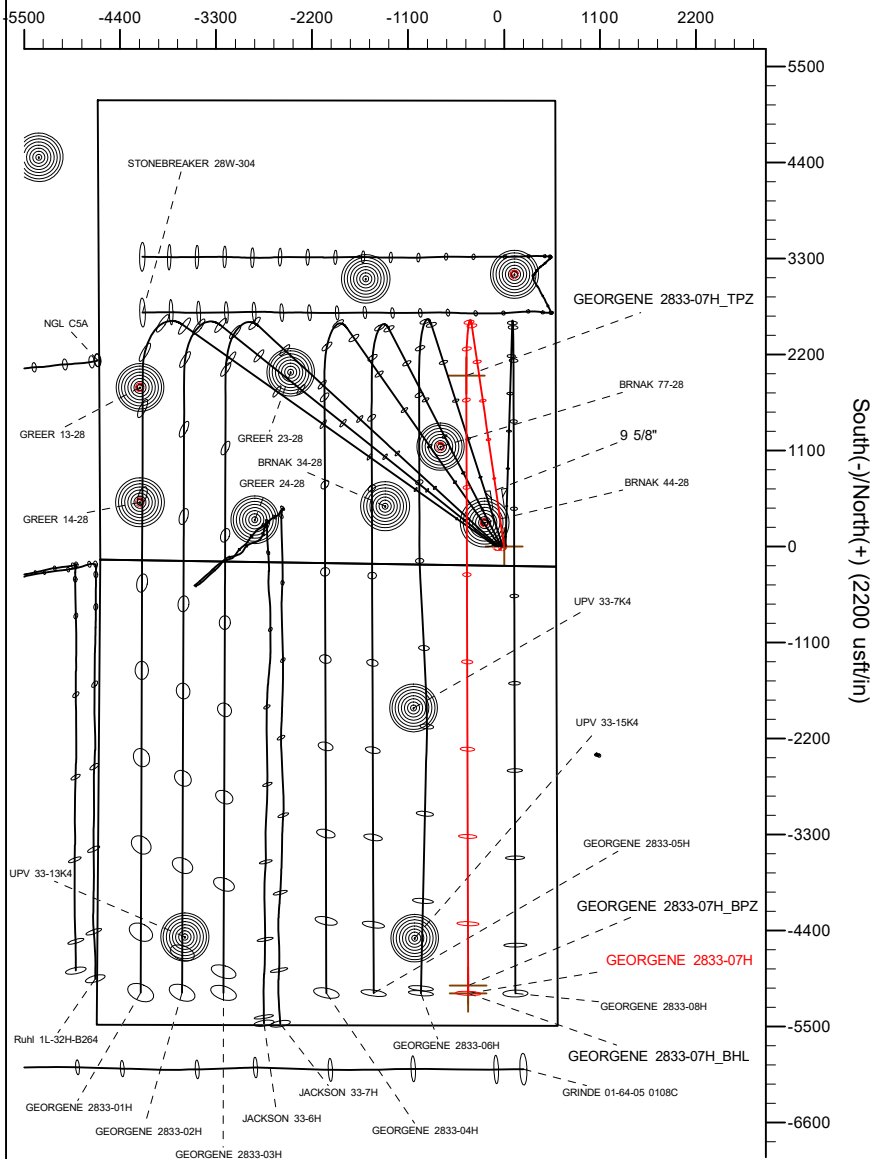
VERDAD RESOURCES

CASING DETAILS

TVD	MD	Name	Size
2376.00	2506.68	9 5/8"	9-5/8

SHL	LP/TPZ	BPZ	BHL
222' FSL	2173' FSL	460' FSL	370' FSL
595 FEL	1025' FEL	1025' FEL	1025' FEL

West(-)/East(+) (2200 usft/in)

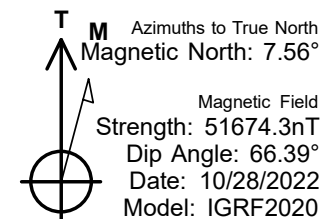
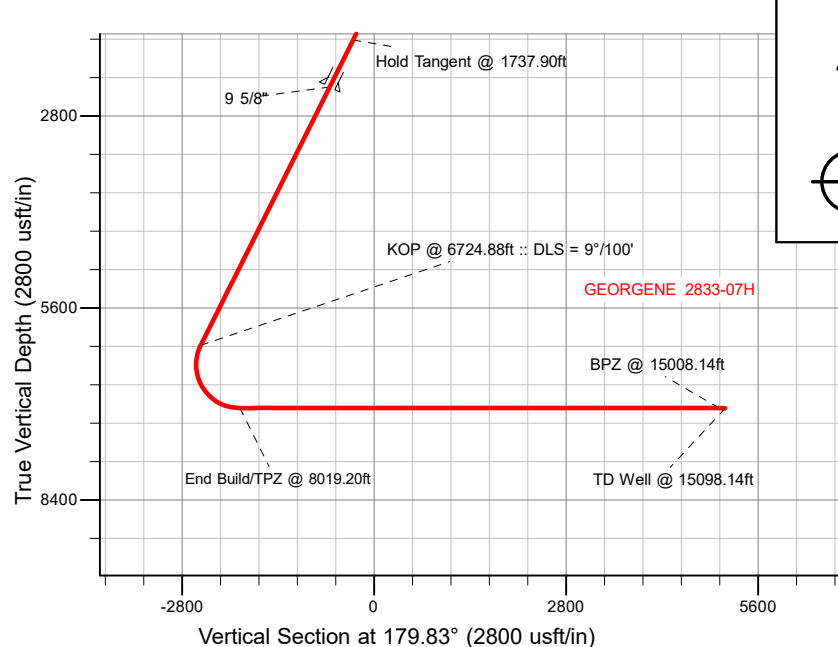


SECTION DETAILS

MD	Inc	Azi	TVD	+N/-S	+E/-W	Dleg	TFace	VSect	Target
0.00	0.00	0.00	0.00	0.00	0.00	0.00	0.00	0.00	
398.90	0.00	0.00	398.90	0.00	0.00	0.00	0.00	0.00	
1737.90	26.78	351.69	1689.68	304.04	-44.41	2.00	351.69	-304.17	
6724.88	26.78	351.69	6141.77	2527.41	-369.16	0.00	0.00	-2528.50	
8019.20	90.00	179.83	7060.00	1957.43	-433.05	9.00	-170.90	-1958.71	
15098.14	90.00	179.83	7060.00	-5121.47	-411.77	0.00	0.00	5120.23	GEORGENE 2833-07H_BHL

DESIGN TARGET DETAILS

Name	TVD	Northing	Easting	Latitude	Longitude
GEORGENE 2833-07H_SHL	0.00	1281682.28	3266049.24	40.102693	-104.548895
GEORGENE 2833-07H_TPZ	7060.00	1283634.97	3265595.38	40.108067	-104.550442
GEORGENE 2833-07H_BPZ	7060.00	1276646.68	3265691.19	40.088881	-104.550367
GEORGENE 2833-07H_BHL	7060.00	1276556.69	3265692.42	40.088634	-104.550366



WELL DETAILS: GEORGENE 2833-07H

GL = 5018'
RKB = 24' @ 5042.00usft (RIG)

Plan: Design #3 (GEORGENE 2833-07H/Plan B)

Date: 10/28/2022

Planning Report

Database:	EDM 5000.16 Single User Db	Local Co-ordinate Reference:	Well GEORGENE 2833-07H
Company:	VERDAD RESOURCES	TVD Reference:	RKB = 24' @ 5042.00usft (RIG)
Project:	WATTENBERG FIELD	MD Reference:	RKB = 24' @ 5042.00usft (RIG)
Site:	2N-64W-28 GEORGENE PAD	North Reference:	True
Well:	GEORGENE 2833-07H	Survey Calculation Method:	Minimum Curvature
Wellbore:	Plan B		
Design:	Design #3		

Project	WATTENBERG FIELD		
Map System:	US State Plane 1983	System Datum:	Mean Sea Level
Geo Datum:	North American Datum 1983		
Map Zone:	Colorado Northern Zone		

Site	2N-64W-28 GEORGENE PAD			
Site Position:		Northing:	1,281,723.49 usft	Latitude: 40.102807
From:	Lat/Long	Easting:	3,266,028.51 usft	Longitude: -104.548967
Position Uncertainty:	0.00 usft	Slot Radius:	13-3/16 "	

Well	GEORGENE 2833-07H			
Well Position	+N/-S	0.00 usft	Northing:	1,281,682.28 usft
	+E/-W	0.00 usft	Easting:	3,266,049.24 usft
Position Uncertainty		3.28 usft	Wellhead Elevation:	usft
Grid Convergence:		0.61 °	Ground Level:	5,018.00 usft

Wellbore	Plan B				
Magnetics	Model Name	Sample Date	Declination (°)	Dip Angle (°)	Field Strength (nT)
	IGRF202013	10/28/2022	7.56	66.39	51,674.29688444

Design	Design #3				
Audit Notes:					
Version:		Phase:	PLAN	Tie On Depth:	0.00
Vertical Section:	Depth From (TVD) (usft)	+N/-S (usft)	+E/-W (usft)	Direction (°)	
	0.00	0.00	0.00	179.83	

Plan Survey Tool Program		Date	10/28/2022		
Depth From (usft)	Depth To (usft)	Survey (Wellbore)	Tool Name	Remarks	
1	0.00	2,376.00	Design #3 (Plan B)	ISCWSA MWD	
				Fixed:v2:standard declination	
2	2,376.00	15,098.14	Design #3 (Plan B)	ISCWSA MWD	
				Fixed:v2:standard declination	

Planning Report

Database:	EDM 5000.16 Single User Db	Local Co-ordinate Reference:	Well GEORGENE 2833-07H
Company:	VERDAD RESOURCES	TVD Reference:	RKB = 24' @ 5042.00usft (RIG)
Project:	WATTENBERG FIELD	MD Reference:	RKB = 24' @ 5042.00usft (RIG)
Site:	2N-64W-28 GEORGENE PAD	North Reference:	True
Well:	GEORGENE 2833-07H	Survey Calculation Method:	Minimum Curvature
Wellbore:	Plan B		
Design:	Design #3		

Plan Sections										
Measured Depth (usft)	Inclination (°)	Azimuth (°)	Vertical Depth (usft)	+N/-S (usft)	+E/-W (usft)	Dogleg Rate (°/100usft)	Build Rate (°/100usft)	Turn Rate (°/100usft)	TFO (°)	Target
0.00	0.00	0.00	0.00	0.00	0.00	0.00	0.00	0.00	0.00	
398.90	0.00	0.00	398.90	0.00	0.00	0.00	0.00	0.00	0.00	
1,737.90	26.78	351.69	1,689.68	304.04	-44.41	2.00	2.00	0.00	351.69	
6,724.88	26.78	351.69	6,141.77	2,527.41	-369.16	0.00	0.00	0.00	0.00	
8,019.20	90.00	179.83	7,060.00	1,957.43	-433.05	9.00	4.88	-13.28	-170.90	
15,098.14	90.00	179.83	7,060.00	-5,121.47	-411.77	0.00	0.00	0.00	0.00	GEORGENE 2833-07

Planning Report

Database:	EDM 5000.16 Single User Db	Local Co-ordinate Reference:	Well GEORGENE 2833-07H
Company:	VERDAD RESOURCES	TVD Reference:	RKB = 24' @ 5042.00usft (RIG)
Project:	WATTENBERG FIELD	MD Reference:	RKB = 24' @ 5042.00usft (RIG)
Site:	2N-64W-28 GEORGENE PAD	North Reference:	True
Well:	GEORGENE 2833-07H	Survey Calculation Method:	Minimum Curvature
Wellbore:	Plan B		
Design:	Design #3		

Planned Survey									
Measured Depth (usft)	Inclination (°)	Azimuth (°)	Vertical Depth (usft)	+N/-S (usft)	+E/-W (usft)	Vertical Section (usft)	Dogleg Rate (°/100usft)	Build Rate (°/100usft)	Turn Rate (°/100usft)
0.00	0.00	0.00	0.00	0.00	0.00	0.00	0.00	0.00	0.00
100.00	0.00	0.00	100.00	0.00	0.00	0.00	0.00	0.00	0.00
200.00	0.00	0.00	200.00	0.00	0.00	0.00	0.00	0.00	0.00
300.00	0.00	0.00	300.00	0.00	0.00	0.00	0.00	0.00	0.00
398.90	0.00	0.00	398.90	0.00	0.00	0.00	0.00	0.00	0.00
Begin Nudge @ 398.90ft									
400.00	0.02	351.69	400.00	0.00	0.00	0.00	2.00	2.00	0.00
500.00	2.02	351.69	499.98	1.77	-0.26	-1.77	2.00	2.00	0.00
600.00	4.02	351.69	599.83	6.98	-1.02	-6.98	2.00	2.00	0.00
700.00	6.02	351.69	699.45	15.64	-2.28	-15.65	2.00	2.00	0.00
800.00	8.02	351.69	798.69	27.74	-4.05	-27.75	2.00	2.00	0.00
900.00	10.02	351.69	897.45	43.25	-6.32	-43.27	2.00	2.00	0.00
1,000.00	12.02	351.69	995.60	62.17	-9.08	-62.20	2.00	2.00	0.00
1,100.00	14.02	351.69	1,093.02	84.47	-12.34	-84.50	2.00	2.00	0.00
1,200.00	16.02	351.69	1,189.60	110.11	-16.08	-110.16	2.00	2.00	0.00
1,300.00	18.02	351.69	1,285.21	139.08	-20.31	-139.14	2.00	2.00	0.00
1,400.00	20.02	351.69	1,379.75	171.33	-25.02	-171.40	2.00	2.00	0.00
1,500.00	22.02	351.69	1,473.09	206.82	-30.21	-206.91	2.00	2.00	0.00
1,600.00	24.02	351.69	1,565.12	245.52	-35.86	-245.62	2.00	2.00	0.00
1,700.00	26.02	351.69	1,655.73	287.37	-41.97	-287.49	2.00	2.00	0.00
1,737.90	26.78	351.69	1,689.68	304.04	-44.41	-304.17	2.00	2.00	0.00
Hold Tangent @ 1737.90ft									
1,800.00	26.78	351.69	1,745.12	331.73	-48.45	-331.87	0.00	0.00	0.00
1,900.00	26.78	351.69	1,834.39	376.31	-54.97	-376.47	0.00	0.00	0.00
2,000.00	26.78	351.69	1,923.66	420.90	-61.48	-421.08	0.00	0.00	0.00
2,100.00	26.78	351.69	2,012.94	465.48	-67.99	-465.68	0.00	0.00	0.00
2,200.00	26.78	351.69	2,102.21	510.06	-74.50	-510.28	0.00	0.00	0.00
2,300.00	26.78	351.69	2,191.49	554.65	-81.01	-554.88	0.00	0.00	0.00
2,400.00	26.78	351.69	2,280.76	599.23	-87.52	-599.49	0.00	0.00	0.00
2,500.00	26.78	351.69	2,370.04	643.81	-94.04	-644.09	0.00	0.00	0.00
2,506.68	26.78	351.69	2,376.00	646.79	-94.47	-647.07	0.00	0.00	0.00
9 5/8"									
2,600.00	26.78	351.69	2,459.31	688.40	-100.55	-688.69	0.00	0.00	0.00
2,700.00	26.78	351.69	2,548.58	732.98	-107.06	-733.29	0.00	0.00	0.00
2,800.00	26.78	351.69	2,637.86	777.56	-113.57	-777.90	0.00	0.00	0.00
2,900.00	26.78	351.69	2,727.13	822.15	-120.08	-822.50	0.00	0.00	0.00
3,000.00	26.78	351.69	2,816.41	866.73	-126.60	-867.10	0.00	0.00	0.00
3,100.00	26.78	351.69	2,905.68	911.31	-133.11	-911.71	0.00	0.00	0.00
3,200.00	26.78	351.69	2,994.96	955.90	-139.62	-956.31	0.00	0.00	0.00
3,300.00	26.78	351.69	3,084.23	1,000.48	-146.13	-1,000.91	0.00	0.00	0.00
3,400.00	26.78	351.69	3,173.50	1,045.06	-152.64	-1,045.51	0.00	0.00	0.00
3,500.00	26.78	351.69	3,262.78	1,089.65	-159.16	-1,090.12	0.00	0.00	0.00
3,600.00	26.78	351.69	3,352.05	1,134.23	-165.67	-1,134.72	0.00	0.00	0.00
3,700.00	26.78	351.69	3,441.33	1,178.82	-172.18	-1,179.32	0.00	0.00	0.00
3,800.00	26.78	351.69	3,530.60	1,223.40	-178.69	-1,223.92	0.00	0.00	0.00
3,900.00	26.78	351.69	3,619.88	1,267.98	-185.20	-1,268.53	0.00	0.00	0.00
4,000.00	26.78	351.69	3,709.15	1,312.57	-191.72	-1,313.13	0.00	0.00	0.00
4,100.00	26.78	351.69	3,798.43	1,357.15	-198.23	-1,357.73	0.00	0.00	0.00
4,200.00	26.78	351.69	3,887.70	1,401.73	-204.74	-1,402.33	0.00	0.00	0.00
4,300.00	26.78	351.69	3,976.97	1,446.32	-211.25	-1,446.94	0.00	0.00	0.00
4,400.00	26.78	351.69	4,066.25	1,490.90	-217.76	-1,491.54	0.00	0.00	0.00
4,500.00	26.78	351.69	4,155.52	1,535.48	-224.28	-1,536.14	0.00	0.00	0.00
4,600.00	26.78	351.69	4,244.80	1,580.07	-230.79	-1,580.75	0.00	0.00	0.00

Planning Report

Database:	EDM 5000.16 Single User Db	Local Co-ordinate Reference:	Well GEORGENE 2833-07H
Company:	VERDAD RESOURCES	TVD Reference:	RKB = 24' @ 5042.00usft (RIG)
Project:	WATTENBERG FIELD	MD Reference:	RKB = 24' @ 5042.00usft (RIG)
Site:	2N-64W-28 GEORGENE PAD	North Reference:	True
Well:	GEORGENE 2833-07H	Survey Calculation Method:	Minimum Curvature
Wellbore:	Plan B		
Design:	Design #3		

Planned Survey									
Measured Depth (usft)	Inclination (°)	Azimuth (°)	Vertical Depth (usft)	+N/-S (usft)	+E/-W (usft)	Vertical Section (usft)	Dogleg Rate (°/100usft)	Build Rate (°/100usft)	Turn Rate (°/100usft)
4,700.00	26.78	351.69	4,334.07	1,624.65	-237.30	-1,625.35	0.00	0.00	0.00
4,800.00	26.78	351.69	4,423.35	1,669.23	-243.81	-1,669.95	0.00	0.00	0.00
4,900.00	26.78	351.69	4,512.62	1,713.82	-250.32	-1,714.55	0.00	0.00	0.00
5,000.00	26.78	351.69	4,601.89	1,758.40	-256.84	-1,759.16	0.00	0.00	0.00
5,100.00	26.78	351.69	4,691.17	1,802.98	-263.35	-1,803.76	0.00	0.00	0.00
5,200.00	26.78	351.69	4,780.44	1,847.57	-269.86	-1,848.36	0.00	0.00	0.00
5,300.00	26.78	351.69	4,869.72	1,892.15	-276.37	-1,892.96	0.00	0.00	0.00
5,400.00	26.78	351.69	4,958.99	1,936.74	-282.88	-1,937.57	0.00	0.00	0.00
5,500.00	26.78	351.69	5,048.27	1,981.32	-289.40	-1,982.17	0.00	0.00	0.00
5,600.00	26.78	351.69	5,137.54	2,025.90	-295.91	-2,026.77	0.00	0.00	0.00
5,700.00	26.78	351.69	5,226.81	2,070.49	-302.42	-2,071.37	0.00	0.00	0.00
5,800.00	26.78	351.69	5,316.09	2,115.07	-308.93	-2,115.98	0.00	0.00	0.00
5,900.00	26.78	351.69	5,405.36	2,159.65	-315.44	-2,160.58	0.00	0.00	0.00
6,000.00	26.78	351.69	5,494.64	2,204.24	-321.96	-2,205.18	0.00	0.00	0.00
6,100.00	26.78	351.69	5,583.91	2,248.82	-328.47	-2,249.78	0.00	0.00	0.00
6,200.00	26.78	351.69	5,673.19	2,293.40	-334.98	-2,294.39	0.00	0.00	0.00
6,300.00	26.78	351.69	5,762.46	2,337.99	-341.49	-2,338.99	0.00	0.00	0.00
6,400.00	26.78	351.69	5,851.73	2,382.57	-348.00	-2,383.59	0.00	0.00	0.00
6,500.00	26.78	351.69	5,941.01	2,427.15	-354.52	-2,428.20	0.00	0.00	0.00
6,600.00	26.78	351.69	6,030.28	2,471.74	-361.03	-2,472.80	0.00	0.00	0.00
6,700.00	26.78	351.69	6,119.56	2,516.32	-367.54	-2,517.40	0.00	0.00	0.00
6,724.88	26.78	351.69	6,141.77	2,527.41	-369.16	-2,528.50	0.00	0.00	0.00
KOP @ 6724.88ft :: DLS = 9°/100'									
6,750.00	24.55	350.83	6,164.41	2,538.17	-370.81	-2,539.26	9.00	-8.88	-3.43
6,800.00	20.13	348.59	6,210.65	2,556.86	-374.17	-2,557.96	9.00	-8.84	-4.48
6,850.00	15.75	345.16	6,258.20	2,571.87	-377.61	-2,572.98	9.00	-8.75	-6.86
6,900.00	11.47	339.22	6,306.79	2,583.08	-381.12	-2,584.20	9.00	-8.57	-11.89
6,950.00	7.44	326.69	6,356.11	2,590.44	-384.66	-2,591.57	9.00	-8.05	-25.06
7,000.00	4.44	292.78	6,405.85	2,593.90	-388.23	-2,595.04	9.00	-6.02	-67.81
7,050.00	4.94	235.64	6,455.70	2,593.43	-391.79	-2,594.59	9.00	1.00	-114.28
7,100.00	8.34	209.01	6,505.37	2,589.05	-395.32	-2,590.21	9.00	6.80	-53.25
7,150.00	12.45	198.71	6,554.54	2,580.77	-398.81	-2,581.94	9.00	8.23	-20.61
7,200.00	16.76	193.55	6,602.92	2,568.65	-402.23	-2,569.83	9.00	8.62	-10.32
7,250.00	21.15	190.47	6,650.20	2,552.76	-405.56	-2,553.95	9.00	8.78	-6.16
7,300.00	25.58	188.41	6,696.09	2,533.20	-408.78	-2,534.40	9.00	8.85	-4.11
7,350.00	30.03	186.93	6,740.30	2,510.09	-411.87	-2,511.30	9.00	8.89	-2.97
7,400.00	34.48	185.80	6,782.58	2,483.58	-414.81	-2,484.80	9.00	8.92	-2.26
7,450.00	38.95	184.90	6,822.65	2,453.82	-417.58	-2,455.05	9.00	8.94	-1.80
7,500.00	43.43	184.16	6,860.26	2,421.00	-420.17	-2,422.24	9.00	8.95	-1.48
7,550.00	47.90	183.53	6,895.20	2,385.33	-422.56	-2,386.57	9.00	8.96	-1.26
7,600.00	52.38	182.98	6,927.23	2,347.02	-424.73	-2,348.27	9.00	8.96	-1.09
7,650.00	56.87	182.50	6,956.17	2,306.31	-426.68	-2,307.56	9.00	8.97	-0.97
7,700.00	61.35	182.06	6,981.84	2,263.44	-428.38	-2,264.71	9.00	8.97	-0.87
7,750.00	65.84	181.66	7,004.07	2,218.70	-429.84	-2,219.96	9.00	8.97	-0.80
7,800.00	70.32	181.29	7,022.73	2,172.34	-431.03	-2,173.61	9.00	8.97	-0.75
7,850.00	74.81	180.94	7,037.70	2,124.66	-431.96	-2,125.93	9.00	8.97	-0.71
7,900.00	79.30	180.60	7,048.90	2,075.94	-432.61	-2,077.22	9.00	8.98	-0.68
7,950.00	83.79	180.27	7,056.25	2,026.50	-432.99	-2,027.78	9.00	8.98	-0.66
8,000.00	88.28	179.95	7,059.71	1,976.63	-433.08	-1,977.91	9.00	8.98	-0.64
8,019.20	90.00	179.83	7,060.00	1,957.43	-433.05	-1,958.71	9.00	8.98	-0.64
End Build/TPZ @ 8019.20ft									
8,100.00	90.00	179.83	7,060.00	1,876.64	-432.80	-1,877.91	0.00	0.00	0.00
8,200.00	90.00	179.83	7,060.00	1,776.64	-432.50	-1,777.91	0.00	0.00	0.00
8,300.00	90.00	179.83	7,060.00	1,676.64	-432.20	-1,677.91	0.00	0.00	0.00

Planning Report

Database:	EDM 5000.16 Single User Db	Local Co-ordinate Reference:	Well GEORGENE 2833-07H
Company:	VERDAD RESOURCES	TVD Reference:	RKB = 24' @ 5042.00usft (RIG)
Project:	WATTENBERG FIELD	MD Reference:	RKB = 24' @ 5042.00usft (RIG)
Site:	2N-64W-28 GEORGENE PAD	North Reference:	True
Well:	GEORGENE 2833-07H	Survey Calculation Method:	Minimum Curvature
Wellbore:	Plan B		
Design:	Design #3		

Planned Survey										
Measured Depth (usft)	Inclination (°)	Azimuth (°)	Vertical Depth (usft)	+N/-S (usft)	+E/-W (usft)	Vertical Section (usft)	Dogleg Rate (°/100usft)	Build Rate (°/100usft)	Turn Rate (°/100usft)	
8,400.00	90.00	179.83	7,060.00	1,576.64	-431.90	-1,577.91	0.00	0.00	0.00	
8,500.00	90.00	179.83	7,060.00	1,476.64	-431.60	-1,477.91	0.00	0.00	0.00	
8,600.00	90.00	179.83	7,060.00	1,376.64	-431.30	-1,377.91	0.00	0.00	0.00	
8,700.00	90.00	179.83	7,060.00	1,276.64	-431.00	-1,277.91	0.00	0.00	0.00	
8,800.00	90.00	179.83	7,060.00	1,176.64	-430.70	-1,177.91	0.00	0.00	0.00	
8,900.00	90.00	179.83	7,060.00	1,076.64	-430.40	-1,077.91	0.00	0.00	0.00	
9,000.00	90.00	179.83	7,060.00	976.64	-430.10	-977.91	0.00	0.00	0.00	
9,100.00	90.00	179.83	7,060.00	876.64	-429.80	-877.91	0.00	0.00	0.00	
9,200.00	90.00	179.83	7,060.00	776.64	-429.50	-777.91	0.00	0.00	0.00	
9,300.00	90.00	179.83	7,060.00	676.64	-429.20	-677.91	0.00	0.00	0.00	
9,400.00	90.00	179.83	7,060.00	576.64	-428.90	-577.91	0.00	0.00	0.00	
9,500.00	90.00	179.83	7,060.00	476.64	-428.60	-477.91	0.00	0.00	0.00	
9,600.00	90.00	179.83	7,060.00	376.64	-428.30	-377.91	0.00	0.00	0.00	
9,700.00	90.00	179.83	7,060.00	276.64	-428.00	-277.91	0.00	0.00	0.00	
9,800.00	90.00	179.83	7,060.00	176.64	-427.69	-177.91	0.00	0.00	0.00	
9,900.00	90.00	179.83	7,060.00	76.65	-427.39	-77.91	0.00	0.00	0.00	
10,000.00	90.00	179.83	7,060.00	-23.35	-427.09	22.09	0.00	0.00	0.00	
10,100.00	90.00	179.83	7,060.00	-123.35	-426.79	122.09	0.00	0.00	0.00	
10,200.00	90.00	179.83	7,060.00	-223.35	-426.49	222.09	0.00	0.00	0.00	
10,300.00	90.00	179.83	7,060.00	-323.35	-426.19	322.09	0.00	0.00	0.00	
10,400.00	90.00	179.83	7,060.00	-423.35	-425.89	422.09	0.00	0.00	0.00	
10,500.00	90.00	179.83	7,060.00	-523.35	-425.59	522.09	0.00	0.00	0.00	
10,600.00	90.00	179.83	7,060.00	-623.35	-425.29	622.09	0.00	0.00	0.00	
10,700.00	90.00	179.83	7,060.00	-723.35	-424.99	722.09	0.00	0.00	0.00	
10,800.00	90.00	179.83	7,060.00	-823.35	-424.69	822.09	0.00	0.00	0.00	
10,900.00	90.00	179.83	7,060.00	-923.35	-424.39	922.09	0.00	0.00	0.00	
11,000.00	90.00	179.83	7,060.00	-1,023.35	-424.09	1,022.09	0.00	0.00	0.00	
11,100.00	90.00	179.83	7,060.00	-1,123.35	-423.79	1,122.09	0.00	0.00	0.00	
11,200.00	90.00	179.83	7,060.00	-1,223.35	-423.49	1,222.09	0.00	0.00	0.00	
11,300.00	90.00	179.83	7,060.00	-1,323.35	-423.19	1,322.09	0.00	0.00	0.00	
11,400.00	90.00	179.83	7,060.00	-1,423.35	-422.89	1,422.09	0.00	0.00	0.00	
11,500.00	90.00	179.83	7,060.00	-1,523.35	-422.59	1,522.09	0.00	0.00	0.00	
11,600.00	90.00	179.83	7,060.00	-1,623.35	-422.28	1,622.09	0.00	0.00	0.00	
11,700.00	90.00	179.83	7,060.00	-1,723.35	-421.98	1,722.09	0.00	0.00	0.00	
11,800.00	90.00	179.83	7,060.00	-1,823.35	-421.68	1,822.09	0.00	0.00	0.00	
11,900.00	90.00	179.83	7,060.00	-1,923.35	-421.38	1,922.09	0.00	0.00	0.00	
12,000.00	90.00	179.83	7,060.00	-2,023.35	-421.08	2,022.09	0.00	0.00	0.00	
12,100.00	90.00	179.83	7,060.00	-2,123.34	-420.78	2,122.09	0.00	0.00	0.00	
12,200.00	90.00	179.83	7,060.00	-2,223.34	-420.48	2,222.09	0.00	0.00	0.00	
12,300.00	90.00	179.83	7,060.00	-2,323.34	-420.18	2,322.09	0.00	0.00	0.00	
12,400.00	90.00	179.83	7,060.00	-2,423.34	-419.88	2,422.09	0.00	0.00	0.00	
12,500.00	90.00	179.83	7,060.00	-2,523.34	-419.58	2,522.09	0.00	0.00	0.00	
12,600.00	90.00	179.83	7,060.00	-2,623.34	-419.28	2,622.09	0.00	0.00	0.00	
12,700.00	90.00	179.83	7,060.00	-2,723.34	-418.98	2,722.09	0.00	0.00	0.00	
12,800.00	90.00	179.83	7,060.00	-2,823.34	-418.68	2,822.09	0.00	0.00	0.00	
12,900.00	90.00	179.83	7,060.00	-2,923.34	-418.38	2,922.09	0.00	0.00	0.00	
13,000.00	90.00	179.83	7,060.00	-3,023.34	-418.08	3,022.09	0.00	0.00	0.00	
13,100.00	90.00	179.83	7,060.00	-3,123.34	-417.78	3,122.09	0.00	0.00	0.00	
13,200.00	90.00	179.83	7,060.00	-3,223.34	-417.48	3,222.09	0.00	0.00	0.00	
13,300.00	90.00	179.83	7,060.00	-3,323.34	-417.17	3,322.09	0.00	0.00	0.00	
13,400.00	90.00	179.83	7,060.00	-3,423.34	-416.87	3,422.09	0.00	0.00	0.00	
13,500.00	90.00	179.83	7,060.00	-3,523.34	-416.57	3,522.09	0.00	0.00	0.00	
13,600.00	90.00	179.83	7,060.00	-3,623.34	-416.27	3,622.09	0.00	0.00	0.00	
13,700.00	90.00	179.83	7,060.00	-3,723.34	-415.97	3,722.09	0.00	0.00	0.00	

Planning Report

Database:	EDM 5000.16 Single User Db	Local Co-ordinate Reference:	Well GEORGENE 2833-07H
Company:	VERDAD RESOURCES	TVD Reference:	RKB = 24' @ 5042.00usft (RIG)
Project:	WATTENBERG FIELD	MD Reference:	RKB = 24' @ 5042.00usft (RIG)
Site:	2N-64W-28 GEORGENE PAD	North Reference:	True
Well:	GEORGENE 2833-07H	Survey Calculation Method:	Minimum Curvature
Wellbore:	Plan B		
Design:	Design #3		

Planned Survey										
Measured Depth (usft)	Inclination (°)	Azimuth (°)	Vertical Depth (usft)	+N/-S (usft)	+E/-W (usft)	Vertical Section (usft)	Dogleg Rate (°/100usft)	Build Rate (°/100usft)	Turn Rate (°/100usft)	
13,800.00	90.00	179.83	7,060.00	-3,823.34	-415.67	3,822.09	0.00	0.00	0.00	
13,900.00	90.00	179.83	7,060.00	-3,923.34	-415.37	3,922.09	0.00	0.00	0.00	
14,000.00	90.00	179.83	7,060.00	-4,023.34	-415.07	4,022.09	0.00	0.00	0.00	
14,100.00	90.00	179.83	7,060.00	-4,123.34	-414.77	4,122.09	0.00	0.00	0.00	
14,200.00	90.00	179.83	7,060.00	-4,223.34	-414.47	4,222.09	0.00	0.00	0.00	
14,300.00	90.00	179.83	7,060.00	-4,323.33	-414.17	4,322.09	0.00	0.00	0.00	
14,400.00	90.00	179.83	7,060.00	-4,423.33	-413.87	4,422.09	0.00	0.00	0.00	
14,500.00	90.00	179.83	7,060.00	-4,523.33	-413.57	4,522.09	0.00	0.00	0.00	
14,600.00	90.00	179.83	7,060.00	-4,623.33	-413.27	4,622.09	0.00	0.00	0.00	
14,700.00	90.00	179.83	7,060.00	-4,723.33	-412.97	4,722.09	0.00	0.00	0.00	
14,800.00	90.00	179.83	7,060.00	-4,823.33	-412.67	4,822.09	0.00	0.00	0.00	
14,900.00	90.00	179.83	7,060.00	-4,923.33	-412.37	4,922.09	0.00	0.00	0.00	
15,000.00	90.00	179.83	7,060.00	-5,023.33	-412.06	5,022.09	0.00	0.00	0.00	
15,008.14	90.00	179.83	7,060.00	-5,031.47	-412.04	5,030.23	0.00	0.00	0.00	
BPZ @ 15008.14ft										
15,098.14	90.00	179.83	7,060.00	-5,121.47	-411.77	5,120.23	0.00	0.00	0.00	
TD Well @ 15098.14ft										

Casing Points					
Measured Depth (usft)	Vertical Depth (usft)	Name	Casing Diameter (")	Hole Diameter (")	
2,506.68	2,376.00	9 5/8"	9-5/8	13-1/2	

Plan Annotations					
Measured Depth (usft)	Vertical Depth (usft)	Local Coordinates			
		+N/-S (usft)	+E/-W (usft)	Comment	
398.90	398.90	0.00	0.00	Begin Nudge @ 398.90ft	
1,737.90	1,689.68	304.04	-44.41	Hold Tangent @ 1737.90ft	
6,724.88	6,141.77	2,527.41	-369.16	KOP @ 6724.88ft :: DLS = 9°/100'	
8,019.20	7,060.00	1,957.43	-433.05	End Build/TPZ @ 8019.20ft	
15,008.14	7,060.00	-5,031.47	-412.04	BPZ @ 15008.14ft	
15,098.14	7,060.00	-5,121.47	-411.77	TD Well @ 15098.14ft	