

VERDAD RESOURCES

**WATTENBERG FIELD
2N-64W-28 GEORGENE PAD
GEORGENE 2833-06H**

Plan B

Plan: Design #3

Standard Planning Report

28 October, 2022

Project: WATTENBERG FIELD
Site: 2N-64W-28 GEORGENE PAD
Well: GEORGENE 2833-06H
Wellbore: Plan B
Design: Design #3

VERDAD RESOURCES

CASING DETAILS

TVD	MD	Name	Size
2376.00	2521.04	9 5/8"	9-5/8

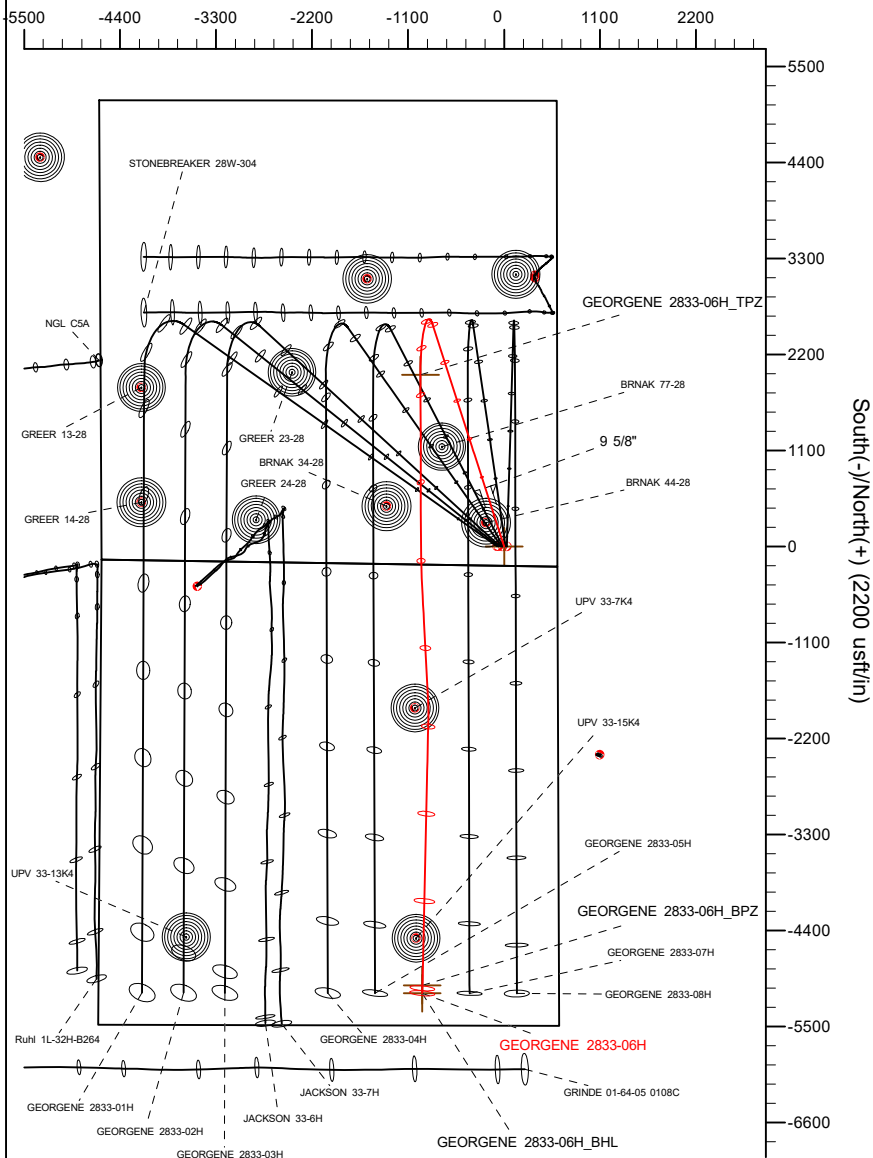
SHL
222' FSL
611 FEL

LP/TPZ
2172' FSL
1567' FEL

BPZ
460' FSL
1567' FEL

BHL
370' FSL
1567' FEL

West(-)/East(+) (2200 usft/in)

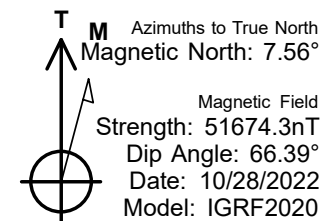
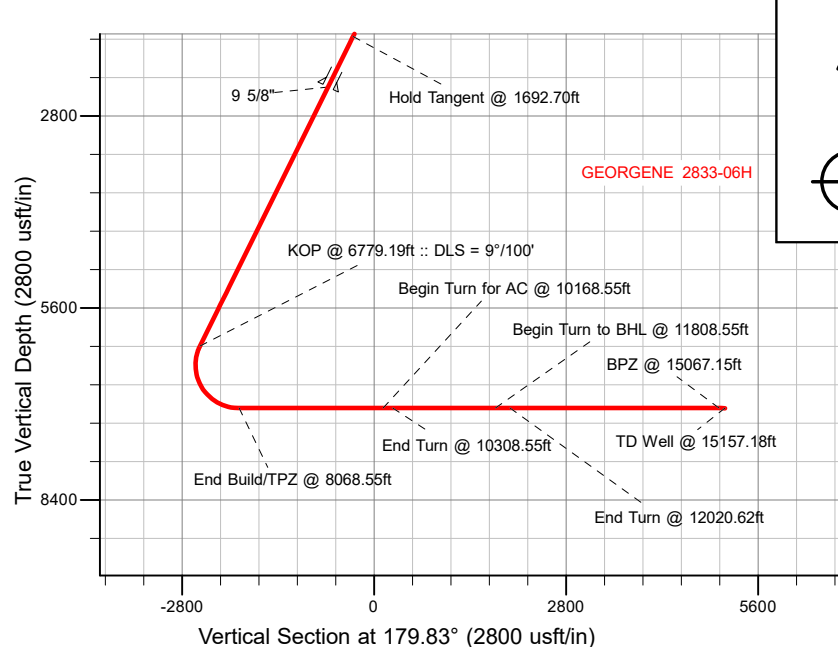


SECTION DETAILS

MD	Inc	Azi	TVD	+N/-S	+E/-W	Dleg	TFace	VSect	Target
0.00	0.00	0.00	0.00	0.00	0.00	0.00	0.00	0.00	
320.70	0.00	0.00	320.70	0.00	0.00	0.00	0.00	0.00	
1692.70	27.44	342.14	1640.85	306.77	-98.85	2.00	342.14	-307.07	
6779.19	27.44	342.14	6155.08	2537.77	-817.72	0.00	0.00	-2540.18	
8068.55	90.00	179.83	7060.00	1965.36	-958.80	9.00	-160.23	-1968.20	
10168.55	90.00	179.83	7060.00	-134.63	-952.57	0.00	0.00	131.81	
10308.55	90.00	177.03	7060.00	-274.57	-948.73	2.00	-90.00	271.75	
11808.55	90.00	177.03	7060.00	-1772.55	-871.01	0.00	0.00	1769.96	
12020.62	90.00	181.27	7060.00	-1984.55	-867.87	2.00	90.00	1981.97	
15157.18	90.00	181.27	7060.00	-5120.34	-937.47	0.00	0.00	5117.54	GEORGENE 2833-06H_BHL

DESIGN TARGET DETAILS

Name	TVD	Northing	Easting	Latitude	Longitude
GEORGENE 2833-06H_SHL	0.00	1281682.28	3266033.24	40.102694	-104.548952
GEORGENE 2833-06H_TPZ	7060.00	1283637.20	3265053.62	40.108089	-104.552379
GEORGENE 2833-06H_BPZ	7060.00	1276642.18	3265149.51	40.088885	-104.552303
GEORGENE 2833-06H_BHL	7060.00	1276552.18	3265150.74	40.088637	-104.552302



WELL DETAILS: GEORGENE 2833-06H

GL = 5018'
RKB = 24' @ 5042.00usft (RIG)

Plan: Design #3 (GEORGENE 2833-06H/Plan B)

Date: 10/28/2022

Planning Report

Database:	EDM 5000.16 Single User Db	Local Co-ordinate Reference:	Well GEORGENE 2833-06H
Company:	VERDAD RESOURCES	TVD Reference:	RKB = 24' @ 5042.00usft (RIG)
Project:	WATTENBERG FIELD	MD Reference:	RKB = 24' @ 5042.00usft (RIG)
Site:	2N-64W-28 GEORGENE PAD	North Reference:	True
Well:	GEORGENE 2833-06H	Survey Calculation Method:	Minimum Curvature
Wellbore:	Plan B		
Design:	Design #3		

Project	WATTENBERG FIELD		
Map System:	US State Plane 1983	System Datum:	Mean Sea Level
Geo Datum:	North American Datum 1983		
Map Zone:	Colorado Northern Zone		

Site	2N-64W-28 GEORGENE PAD			
Site Position:		Northing:	1,281,723.49 usft	Latitude: 40.102807
From:	Lat/Long	Easting:	3,266,028.51 usft	Longitude: -104.548967
Position Uncertainty:	0.00 usft	Slot Radius:	13-3/16 "	

Well	GEORGENE 2833-06H			
Well Position	+N/-S	0.00 usft	Northing:	1,281,682.28 usft
	+E/-W	0.00 usft	Easting:	3,266,033.24 usft
Position Uncertainty		3.28 usft	Wellhead Elevation:	usft
Grid Convergence:		0.61 °	Ground Level:	5,018.00 usft

Wellbore	Plan B				
Magnetics	Model Name	Sample Date	Declination (°)	Dip Angle (°)	Field Strength (nT)
	IGRF202013	10/28/2022	7.56	66.39	51,674.29127387

Design	Design #3				
Audit Notes:					
Version:		Phase:	PLAN	Tie On Depth:	0.00
Vertical Section:	Depth From (TVD) (usft)	+N/-S (usft)	+E/-W (usft)	Direction (°)	
	0.00	0.00	0.00	179.83	

Plan Survey Tool Program		Date	10/28/2022		
Depth From (usft)	Depth To (usft)	Survey (Wellbore)	Tool Name	Remarks	
1	0.00	2,376.00	Design #3 (Plan B)	ISCWSA MWD	
				Fixed:v2:standard declination	
2	2,376.00	15,157.18	Design #3 (Plan B)	ISCWSA MWD	
				Fixed:v2:standard declination	

Planning Report

Database:	EDM 5000.16 Single User Db	Local Co-ordinate Reference:	Well GEORGENE 2833-06H
Company:	VERDAD RESOURCES	TVD Reference:	RKB = 24' @ 5042.00usft (RIG)
Project:	WATTENBERG FIELD	MD Reference:	RKB = 24' @ 5042.00usft (RIG)
Site:	2N-64W-28 GEORGENE PAD	North Reference:	True
Well:	GEORGENE 2833-06H	Survey Calculation Method:	Minimum Curvature
Wellbore:	Plan B		
Design:	Design #3		

Plan Sections										
Measured Depth (usft)	Inclination (°)	Azimuth (°)	Vertical Depth (usft)	+N/-S (usft)	+E/-W (usft)	Dogleg Rate (°/100usft)	Build Rate (°/100usft)	Turn Rate (°/100usft)	TFO (°)	Target
0.00	0.00	0.00	0.00	0.00	0.00	0.00	0.00	0.00	0.00	
320.70	0.00	0.00	320.70	0.00	0.00	0.00	0.00	0.00	0.00	
1,692.70	27.44	342.14	1,640.85	306.77	-98.85	2.00	2.00	0.00	342.14	
6,779.19	27.44	342.14	6,155.08	2,537.77	-817.72	0.00	0.00	0.00	0.00	
8,068.55	90.00	179.83	7,060.00	1,965.36	-958.80	9.00	4.85	-12.59	-160.23	
10,168.55	90.00	179.83	7,060.00	-134.63	-952.57	0.00	0.00	0.00	0.00	
10,308.55	90.00	177.03	7,060.00	-274.57	-948.73	2.00	0.00	-2.00	-90.00	
11,808.55	90.00	177.03	7,060.00	-1,772.55	-871.01	0.00	0.00	0.00	0.00	
12,020.63	90.00	181.27	7,060.00	-1,984.55	-867.87	2.00	0.00	2.00	90.00	
15,157.18	90.00	181.27	7,060.00	-5,120.34	-937.47	0.00	0.00	0.00	0.00	GEORGENE 2833-06

Planning Report

Database:	EDM 5000.16 Single User Db	Local Co-ordinate Reference:	Well GEORGENE 2833-06H
Company:	VERDAD RESOURCES	TVD Reference:	RKB = 24' @ 5042.00usft (RIG)
Project:	WATTENBERG FIELD	MD Reference:	RKB = 24' @ 5042.00usft (RIG)
Site:	2N-64W-28 GEORGENE PAD	North Reference:	True
Well:	GEORGENE 2833-06H	Survey Calculation Method:	Minimum Curvature
Wellbore:	Plan B		
Design:	Design #3		

Planned Survey									
Measured Depth (usft)	Inclination (°)	Azimuth (°)	Vertical Depth (usft)	+N/-S (usft)	+E/-W (usft)	Vertical Section (usft)	Dogleg Rate (°/100usft)	Build Rate (°/100usft)	Turn Rate (°/100usft)
0.00	0.00	0.00	0.00	0.00	0.00	0.00	0.00	0.00	0.00
100.00	0.00	0.00	100.00	0.00	0.00	0.00	0.00	0.00	0.00
200.00	0.00	0.00	200.00	0.00	0.00	0.00	0.00	0.00	0.00
300.00	0.00	0.00	300.00	0.00	0.00	0.00	0.00	0.00	0.00
320.70	0.00	0.00	320.70	0.00	0.00	0.00	0.00	0.00	0.00
Begin Nudge @ 320.70ft									
400.00	1.59	342.14	399.99	1.04	-0.34	-1.05	2.00	2.00	0.00
500.00	3.59	342.14	499.88	5.34	-1.72	-5.34	2.00	2.00	0.00
600.00	5.59	342.14	599.56	12.95	-4.17	-12.96	2.00	2.00	0.00
700.00	7.59	342.14	698.89	23.86	-7.69	-23.89	2.00	2.00	0.00
800.00	9.59	342.14	797.77	38.07	-12.27	-38.11	2.00	2.00	0.00
900.00	11.59	342.14	896.06	55.56	-17.90	-55.61	2.00	2.00	0.00
1,000.00	13.59	342.14	993.65	76.30	-24.58	-76.37	2.00	2.00	0.00
1,100.00	15.59	342.14	1,090.42	100.27	-32.31	-100.36	2.00	2.00	0.00
1,200.00	17.59	342.14	1,186.26	127.44	-41.06	-127.56	2.00	2.00	0.00
1,300.00	19.59	342.14	1,281.04	157.77	-50.84	-157.92	2.00	2.00	0.00
1,400.00	21.59	342.14	1,374.65	191.24	-61.62	-191.42	2.00	2.00	0.00
1,500.00	23.59	342.14	1,466.97	227.79	-73.40	-228.01	2.00	2.00	0.00
1,600.00	25.59	342.14	1,557.90	267.39	-86.16	-267.64	2.00	2.00	0.00
1,692.70	27.44	342.14	1,640.85	306.77	-98.85	-307.07	2.00	2.00	0.00
Hold Tangent @ 1692.70ft									
1,700.00	27.44	342.14	1,647.33	309.98	-99.88	-310.27	0.00	0.00	0.00
1,800.00	27.44	342.14	1,736.08	353.84	-114.01	-354.17	0.00	0.00	0.00
1,900.00	27.44	342.14	1,824.83	397.70	-128.15	-398.08	0.00	0.00	0.00
2,000.00	27.44	342.14	1,913.58	441.56	-142.28	-441.98	0.00	0.00	0.00
2,100.00	27.44	342.14	2,002.33	485.42	-156.41	-485.88	0.00	0.00	0.00
2,200.00	27.44	342.14	2,091.08	529.28	-170.55	-529.79	0.00	0.00	0.00
2,300.00	27.44	342.14	2,179.83	573.14	-184.68	-573.69	0.00	0.00	0.00
2,400.00	27.44	342.14	2,268.58	617.00	-198.81	-617.59	0.00	0.00	0.00
2,500.00	27.44	342.14	2,357.32	660.87	-212.94	-661.49	0.00	0.00	0.00
2,521.04	27.44	342.14	2,376.00	670.10	-215.92	-670.73	0.00	0.00	0.00
9 5/8"									
2,600.00	27.44	342.14	2,446.07	704.73	-227.08	-705.40	0.00	0.00	0.00
2,700.00	27.44	342.14	2,534.82	748.59	-241.21	-749.30	0.00	0.00	0.00
2,800.00	27.44	342.14	2,623.57	792.45	-255.34	-793.20	0.00	0.00	0.00
2,900.00	27.44	342.14	2,712.32	836.31	-269.48	-837.11	0.00	0.00	0.00
3,000.00	27.44	342.14	2,801.07	880.17	-283.61	-881.01	0.00	0.00	0.00
3,100.00	27.44	342.14	2,889.82	924.03	-297.74	-924.91	0.00	0.00	0.00
3,200.00	27.44	342.14	2,978.57	967.89	-311.88	-968.81	0.00	0.00	0.00
3,300.00	27.44	342.14	3,067.32	1,011.76	-326.01	-1,012.72	0.00	0.00	0.00
3,400.00	27.44	342.14	3,156.07	1,055.62	-340.14	-1,056.62	0.00	0.00	0.00
3,500.00	27.44	342.14	3,244.82	1,099.48	-354.27	-1,100.52	0.00	0.00	0.00
3,600.00	27.44	342.14	3,333.57	1,143.34	-368.41	-1,144.43	0.00	0.00	0.00
3,700.00	27.44	342.14	3,422.32	1,187.20	-382.54	-1,188.33	0.00	0.00	0.00
3,800.00	27.44	342.14	3,511.07	1,231.06	-396.67	-1,232.23	0.00	0.00	0.00
3,900.00	27.44	342.14	3,599.82	1,274.92	-410.81	-1,276.14	0.00	0.00	0.00
4,000.00	27.44	342.14	3,688.57	1,318.78	-424.94	-1,320.04	0.00	0.00	0.00
4,100.00	27.44	342.14	3,777.31	1,362.64	-439.07	-1,363.94	0.00	0.00	0.00
4,200.00	27.44	342.14	3,866.06	1,406.51	-453.20	-1,407.84	0.00	0.00	0.00
4,300.00	27.44	342.14	3,954.81	1,450.37	-467.34	-1,451.75	0.00	0.00	0.00
4,400.00	27.44	342.14	4,043.56	1,494.23	-481.47	-1,495.65	0.00	0.00	0.00
4,500.00	27.44	342.14	4,132.31	1,538.09	-495.60	-1,539.55	0.00	0.00	0.00
4,600.00	27.44	342.14	4,221.06	1,581.95	-509.74	-1,583.46	0.00	0.00	0.00

Planning Report

Database:	EDM 5000.16 Single User Db	Local Co-ordinate Reference:	Well GEORGENE 2833-06H
Company:	VERDAD RESOURCES	TVD Reference:	RKB = 24' @ 5042.00usft (RIG)
Project:	WATTENBERG FIELD	MD Reference:	RKB = 24' @ 5042.00usft (RIG)
Site:	2N-64W-28 GEORGENE PAD	North Reference:	True
Well:	GEORGENE 2833-06H	Survey Calculation Method:	Minimum Curvature
Wellbore:	Plan B		
Design:	Design #3		

Planned Survey									
Measured Depth (usft)	Inclination (°)	Azimuth (°)	Vertical Depth (usft)	+N/-S (usft)	+E/-W (usft)	Vertical Section (usft)	Dogleg Rate (°/100usft)	Build Rate (°/100usft)	Turn Rate (°/100usft)
4,700.00	27.44	342.14	4,309.81	1,625.81	-523.87	-1,627.36	0.00	0.00	0.00
4,800.00	27.44	342.14	4,398.56	1,669.67	-538.00	-1,671.26	0.00	0.00	0.00
4,900.00	27.44	342.14	4,487.31	1,713.53	-552.14	-1,715.16	0.00	0.00	0.00
5,000.00	27.44	342.14	4,576.06	1,757.40	-566.27	-1,759.07	0.00	0.00	0.00
5,100.00	27.44	342.14	4,664.81	1,801.26	-580.40	-1,802.97	0.00	0.00	0.00
5,200.00	27.44	342.14	4,753.56	1,845.12	-594.53	-1,846.87	0.00	0.00	0.00
5,300.00	27.44	342.14	4,842.31	1,888.98	-608.67	-1,890.78	0.00	0.00	0.00
5,400.00	27.44	342.14	4,931.06	1,932.84	-622.80	-1,934.68	0.00	0.00	0.00
5,500.00	27.44	342.14	5,019.81	1,976.70	-636.93	-1,978.58	0.00	0.00	0.00
5,600.00	27.44	342.14	5,108.56	2,020.56	-651.07	-2,022.49	0.00	0.00	0.00
5,700.00	27.44	342.14	5,197.30	2,064.42	-665.20	-2,066.39	0.00	0.00	0.00
5,800.00	27.44	342.14	5,286.05	2,108.29	-679.33	-2,110.29	0.00	0.00	0.00
5,900.00	27.44	342.14	5,374.80	2,152.15	-693.47	-2,154.19	0.00	0.00	0.00
6,000.00	27.44	342.14	5,463.55	2,196.01	-707.60	-2,198.10	0.00	0.00	0.00
6,100.00	27.44	342.14	5,552.30	2,239.87	-721.73	-2,242.00	0.00	0.00	0.00
6,200.00	27.44	342.14	5,641.05	2,283.73	-735.86	-2,285.90	0.00	0.00	0.00
6,300.00	27.44	342.14	5,729.80	2,327.59	-750.00	-2,329.81	0.00	0.00	0.00
6,400.00	27.44	342.14	5,818.55	2,371.45	-764.13	-2,373.71	0.00	0.00	0.00
6,500.00	27.44	342.14	5,907.30	2,415.31	-778.26	-2,417.61	0.00	0.00	0.00
6,600.00	27.44	342.14	5,996.05	2,459.17	-792.40	-2,461.51	0.00	0.00	0.00
6,700.00	27.44	342.14	6,084.80	2,503.04	-806.53	-2,505.42	0.00	0.00	0.00
6,779.19	27.44	342.14	6,155.08	2,537.77	-817.72	-2,540.18	0.00	0.00	0.00
KOP @ 6779.19ft :: DLS = 9°/100'									
6,800.00	25.68	340.68	6,173.69	2,546.59	-820.68	-2,549.01	9.00	-8.44	-7.02
6,850.00	21.54	336.27	6,219.50	2,565.23	-827.97	-2,567.67	9.00	-8.28	-8.81
6,900.00	17.57	329.94	6,266.61	2,580.17	-835.44	-2,582.64	9.00	-7.95	-12.67
6,950.00	13.90	320.23	6,314.74	2,591.32	-843.07	-2,593.81	9.00	-7.33	-19.41
7,000.00	10.87	304.57	6,363.58	2,598.62	-850.80	-2,601.13	9.00	-6.07	-31.31
7,050.00	9.12	280.42	6,412.84	2,602.01	-858.58	-2,604.55	9.00	-3.50	-48.31
7,100.00	9.40	252.23	6,462.22	2,601.48	-866.37	-2,604.04	9.00	0.56	-56.39
7,150.00	11.56	230.29	6,511.40	2,597.03	-874.12	-2,599.62	9.00	4.33	-43.87
7,200.00	14.81	216.48	6,560.09	2,588.69	-881.77	-2,591.30	9.00	6.49	-27.62
7,250.00	18.57	207.84	6,607.98	2,576.51	-889.29	-2,579.13	9.00	7.53	-17.28
7,300.00	22.60	202.10	6,654.78	2,560.56	-896.63	-2,563.21	9.00	8.06	-11.47
7,350.00	26.77	198.05	6,700.21	2,540.94	-903.74	-2,543.61	9.00	8.34	-8.10
7,400.00	31.03	195.04	6,743.97	2,517.77	-910.58	-2,520.46	9.00	8.52	-6.04
7,450.00	35.34	192.69	6,785.81	2,491.21	-917.10	-2,493.92	9.00	8.63	-4.70
7,500.00	39.69	190.79	6,825.46	2,461.40	-923.27	-2,464.13	9.00	8.70	-3.79
7,550.00	44.07	189.21	6,862.68	2,428.53	-929.04	-2,431.28	9.00	8.75	-3.15
7,600.00	48.46	187.86	6,897.24	2,392.81	-934.39	-2,395.58	9.00	8.79	-2.69
7,650.00	52.87	186.69	6,928.92	2,354.46	-939.27	-2,357.24	9.00	8.82	-2.35
7,700.00	57.29	185.65	6,957.54	2,313.71	-943.67	-2,316.50	9.00	8.84	-2.09
7,750.00	61.71	184.70	6,982.91	2,270.82	-947.54	-2,273.62	9.00	8.85	-1.89
7,800.00	66.14	183.83	7,004.88	2,226.04	-950.88	-2,228.85	9.00	8.86	-1.74
7,850.00	70.58	183.02	7,023.31	2,179.66	-953.65	-2,182.48	9.00	8.87	-1.62
7,900.00	75.02	182.25	7,038.09	2,131.96	-955.84	-2,134.78	9.00	8.88	-1.54
7,950.00	79.46	181.51	7,049.13	2,083.23	-957.44	-2,086.06	9.00	8.88	-1.48
8,000.00	83.91	180.80	7,056.36	2,033.78	-958.43	-2,036.61	9.00	8.89	-1.43
8,050.00	88.35	180.09	7,059.73	1,983.91	-958.81	-1,986.74	9.00	8.89	-1.41
8,068.55	90.00	179.83	7,060.00	1,965.36	-958.80	-1,968.20	9.00	8.89	-1.40
End Build/TPZ @ 8068.55ft									
8,100.00	90.00	179.83	7,060.00	1,933.91	-958.71	-1,936.74	0.00	0.00	0.00
8,200.00	90.00	179.83	7,060.00	1,833.91	-958.41	-1,836.74	0.00	0.00	0.00
8,300.00	90.00	179.83	7,060.00	1,733.91	-958.11	-1,736.74	0.00	0.00	0.00

Planning Report

Database:	EDM 5000.16 Single User Db	Local Co-ordinate Reference:	Well GEORGENE 2833-06H
Company:	VERDAD RESOURCES	TVD Reference:	RKB = 24' @ 5042.00usft (RIG)
Project:	WATTENBERG FIELD	MD Reference:	RKB = 24' @ 5042.00usft (RIG)
Site:	2N-64W-28 GEORGENE PAD	North Reference:	True
Well:	GEORGENE 2833-06H	Survey Calculation Method:	Minimum Curvature
Wellbore:	Plan B		
Design:	Design #3		

Planned Survey										
Measured Depth (usft)	Inclination (°)	Azimuth (°)	Vertical Depth (usft)	+N/-S (usft)	+E/-W (usft)	Vertical Section (usft)	Dogleg Rate (°/100usft)	Build Rate (°/100usft)	Turn Rate (°/100usft)	
8,400.00	90.00	179.83	7,060.00	1,633.91	-957.82	-1,636.74	0.00	0.00	0.00	
8,500.00	90.00	179.83	7,060.00	1,533.91	-957.52	-1,536.74	0.00	0.00	0.00	
8,600.00	90.00	179.83	7,060.00	1,433.91	-957.22	-1,436.74	0.00	0.00	0.00	
8,700.00	90.00	179.83	7,060.00	1,333.91	-956.93	-1,336.74	0.00	0.00	0.00	
8,800.00	90.00	179.83	7,060.00	1,233.91	-956.63	-1,236.74	0.00	0.00	0.00	
8,900.00	90.00	179.83	7,060.00	1,133.91	-956.33	-1,136.74	0.00	0.00	0.00	
9,000.00	90.00	179.83	7,060.00	1,033.91	-956.04	-1,036.74	0.00	0.00	0.00	
9,100.00	90.00	179.83	7,060.00	933.91	-955.74	-936.74	0.00	0.00	0.00	
9,200.00	90.00	179.83	7,060.00	833.91	-955.44	-836.74	0.00	0.00	0.00	
9,300.00	90.00	179.83	7,060.00	733.91	-955.15	-736.74	0.00	0.00	0.00	
9,400.00	90.00	179.83	7,060.00	633.91	-954.85	-636.74	0.00	0.00	0.00	
9,500.00	90.00	179.83	7,060.00	533.91	-954.55	-536.74	0.00	0.00	0.00	
9,600.00	90.00	179.83	7,060.00	433.91	-954.26	-436.74	0.00	0.00	0.00	
9,700.00	90.00	179.83	7,060.00	333.92	-953.96	-336.74	0.00	0.00	0.00	
9,800.00	90.00	179.83	7,060.00	233.92	-953.66	-236.74	0.00	0.00	0.00	
9,900.00	90.00	179.83	7,060.00	133.92	-953.37	-136.74	0.00	0.00	0.00	
10,000.00	90.00	179.83	7,060.00	33.92	-953.07	-36.74	0.00	0.00	0.00	
10,100.00	90.00	179.83	7,060.00	-66.08	-952.77	63.26	0.00	0.00	0.00	
10,168.55	90.00	179.83	7,060.00	-134.63	-952.57	131.81	0.00	0.00	0.00	
Begin Turn for AC @ 10168.55ft										
10,200.00	90.00	179.20	7,060.00	-166.08	-952.30	163.26	2.00	0.00	-2.00	
10,308.55	90.00	177.03	7,060.00	-274.57	-948.73	271.75	2.00	0.00	-2.00	
End Turn @ 10308.55ft										
10,400.00	90.00	177.03	7,060.00	-365.89	-944.00	363.09	0.00	0.00	0.00	
10,500.00	90.00	177.03	7,060.00	-465.76	-938.81	462.97	0.00	0.00	0.00	
10,600.00	90.00	177.03	7,060.00	-565.62	-933.63	562.85	0.00	0.00	0.00	
10,700.00	90.00	177.03	7,060.00	-665.49	-928.45	662.73	0.00	0.00	0.00	
10,800.00	90.00	177.03	7,060.00	-765.36	-923.27	762.61	0.00	0.00	0.00	
10,900.00	90.00	177.03	7,060.00	-865.22	-918.09	862.49	0.00	0.00	0.00	
11,000.00	90.00	177.03	7,060.00	-965.09	-912.91	962.37	0.00	0.00	0.00	
11,100.00	90.00	177.03	7,060.00	-1,064.95	-907.73	1,062.26	0.00	0.00	0.00	
11,200.00	90.00	177.03	7,060.00	-1,164.82	-902.55	1,162.14	0.00	0.00	0.00	
11,300.00	90.00	177.03	7,060.00	-1,264.68	-897.36	1,262.02	0.00	0.00	0.00	
11,400.00	90.00	177.03	7,060.00	-1,364.55	-892.18	1,361.90	0.00	0.00	0.00	
11,500.00	90.00	177.03	7,060.00	-1,464.42	-887.00	1,461.78	0.00	0.00	0.00	
11,600.00	90.00	177.03	7,060.00	-1,564.28	-881.82	1,561.66	0.00	0.00	0.00	
11,700.00	90.00	177.03	7,060.00	-1,664.15	-876.64	1,661.54	0.00	0.00	0.00	
11,808.55	90.00	177.03	7,060.00	-1,772.55	-871.01	1,769.96	0.00	0.00	0.00	
Begin Turn to BHL @ 11808.55ft										
11,900.00	90.00	178.86	7,060.00	-1,863.94	-867.73	1,861.36	2.00	0.00	2.00	
12,000.00	90.00	180.86	7,060.00	-1,963.93	-867.49	1,961.35	2.00	0.00	2.00	
12,020.63	90.00	181.27	7,060.00	-1,984.55	-867.87	1,981.97	2.00	0.00	2.00	
End Turn @ 12020.62ft										
12,100.00	90.00	181.27	7,060.00	-2,063.91	-869.63	2,061.32	0.00	0.00	0.00	
12,200.00	90.00	181.27	7,060.00	-2,163.89	-871.85	2,161.29	0.00	0.00	0.00	
12,300.00	90.00	181.27	7,060.00	-2,263.86	-874.07	2,261.26	0.00	0.00	0.00	
12,400.00	90.00	181.27	7,060.00	-2,363.84	-876.29	2,361.23	0.00	0.00	0.00	
12,500.00	90.00	181.27	7,060.00	-2,463.81	-878.51	2,461.19	0.00	0.00	0.00	
12,600.00	90.00	181.27	7,060.00	-2,563.79	-880.73	2,561.16	0.00	0.00	0.00	
12,700.00	90.00	181.27	7,060.00	-2,663.76	-882.95	2,661.13	0.00	0.00	0.00	
12,800.00	90.00	181.27	7,060.00	-2,763.74	-885.17	2,761.10	0.00	0.00	0.00	
12,900.00	90.00	181.27	7,060.00	-2,863.71	-887.38	2,861.07	0.00	0.00	0.00	
13,000.00	90.00	181.27	7,060.00	-2,963.69	-889.60	2,961.04	0.00	0.00	0.00	

Planning Report

Database:	EDM 5000.16 Single User Db	Local Co-ordinate Reference:	Well GEORGENE 2833-06H
Company:	VERDAD RESOURCES	TVD Reference:	RKB = 24' @ 5042.00usft (RIG)
Project:	WATTENBERG FIELD	MD Reference:	RKB = 24' @ 5042.00usft (RIG)
Site:	2N-64W-28 GEORGENE PAD	North Reference:	True
Well:	GEORGENE 2833-06H	Survey Calculation Method:	Minimum Curvature
Wellbore:	Plan B		
Design:	Design #3		

Planned Survey										
Measured Depth (usft)	Inclination (°)	Azimuth (°)	Vertical Depth (usft)	+N/-S (usft)	+E/-W (usft)	Vertical Section (usft)	Dogleg Rate (°/100usft)	Build Rate (°/100usft)	Turn Rate (°/100usft)	
13,100.00	90.00	181.27	7,060.00	-3,063.66	-891.82	3,061.00	0.00	0.00	0.00	
13,200.00	90.00	181.27	7,060.00	-3,163.64	-894.04	3,160.97	0.00	0.00	0.00	
13,300.00	90.00	181.27	7,060.00	-3,263.61	-896.26	3,260.94	0.00	0.00	0.00	
13,400.00	90.00	181.27	7,060.00	-3,363.59	-898.48	3,360.91	0.00	0.00	0.00	
13,500.00	90.00	181.27	7,060.00	-3,463.57	-900.70	3,460.88	0.00	0.00	0.00	
13,600.00	90.00	181.27	7,060.00	-3,563.54	-902.92	3,560.85	0.00	0.00	0.00	
13,700.00	90.00	181.27	7,060.00	-3,663.52	-905.14	3,660.81	0.00	0.00	0.00	
13,800.00	90.00	181.27	7,060.00	-3,763.49	-907.36	3,760.78	0.00	0.00	0.00	
13,900.00	90.00	181.27	7,060.00	-3,863.47	-909.57	3,860.75	0.00	0.00	0.00	
14,000.00	90.00	181.27	7,060.00	-3,963.44	-911.79	3,960.72	0.00	0.00	0.00	
14,100.00	90.00	181.27	7,060.00	-4,063.42	-914.01	4,060.69	0.00	0.00	0.00	
14,200.00	90.00	181.27	7,060.00	-4,163.39	-916.23	4,160.66	0.00	0.00	0.00	
14,300.00	90.00	181.27	7,060.00	-4,263.37	-918.45	4,260.62	0.00	0.00	0.00	
14,400.00	90.00	181.27	7,060.00	-4,363.34	-920.67	4,360.59	0.00	0.00	0.00	
14,500.00	90.00	181.27	7,060.00	-4,463.32	-922.89	4,460.56	0.00	0.00	0.00	
14,600.00	90.00	181.27	7,060.00	-4,563.29	-925.11	4,560.53	0.00	0.00	0.00	
14,700.00	90.00	181.27	7,060.00	-4,663.27	-927.33	4,660.50	0.00	0.00	0.00	
14,800.00	90.00	181.27	7,060.00	-4,763.25	-929.54	4,760.47	0.00	0.00	0.00	
14,900.00	90.00	181.27	7,060.00	-4,863.22	-931.76	4,860.43	0.00	0.00	0.00	
15,000.00	90.00	181.27	7,060.00	-4,963.20	-933.98	4,960.40	0.00	0.00	0.00	
15,067.15	90.00	181.27	7,060.00	-5,030.33	-935.47	5,027.53	0.00	0.00	0.00	
BPZ @ 15067.15ft										
15,100.00	90.00	181.27	7,060.00	-5,063.17	-936.20	5,060.37	0.00	0.00	0.00	
15,157.18	90.00	181.27	7,060.00	-5,120.34	-937.47	5,117.54	0.00	0.00	0.00	
TD Well @ 15157.18ft										

Casing Points					
Measured Depth (usft)	Vertical Depth (usft)	Name		Casing Diameter (")	Hole Diameter (")
2,521.04	2,376.00	9 5/8"		9-5/8	13-1/2

Plan Annotations					
Measured Depth (usft)	Vertical Depth (usft)	Local Coordinates		Comment	
		+N/-S (usft)	+E/-W (usft)		
320.70	320.70	0.00	0.00	Begin Nudge @ 320.70ft	
1,692.70	1,640.85	306.77	-98.85	Hold Tangent @ 1692.70ft	
6,779.19	6,155.08	2,537.77	-817.72	KOP @ 6779.19ft :: DLS = 9°/100'	
8,068.55	7,060.00	1,965.36	-958.80	End Build/TPZ @ 8068.55ft	
10,168.55	7,060.00	-134.63	-952.57	Begin Turn for AC @ 10168.55ft	
10,308.55	7,060.00	-274.57	-948.73	End Turn @ 10308.55ft	
11,808.55	7,060.00	-1,772.55	-871.01	Begin Turn to BHL @ 11808.55ft	
12,020.63	7,060.00	-1,984.55	-867.87	End Turn @ 12020.62ft	
15,067.15	7,060.00	-5,030.33	-935.47	BPZ @ 15067.15ft	
15,157.18	7,060.00	-5,120.34	-937.47	TD Well @ 15157.18ft	