

# **VERDAD RESOURCES**

**WATTENBERG FIELD  
2N-64W-28 GEORGENE PAD  
GEORGENE 2833-01H**

**Plan B**

**Plan: Design #3**

## **Standard Planning Report**

**28 October, 2022**

Project: WATTENBERG FIELD  
Site: 2N-64W-28 GEORGENE PAD  
Well: GEORGENE 2833-01H  
Wellbore: Plan B  
Design: Design #3

# VERDAD RESOURCES

## CASING DETAILS

TVD	MD	Name	Size
2376.00	2639.62	9 5/8"	9-5/8

SHL  
222' FSL  
691' FEL

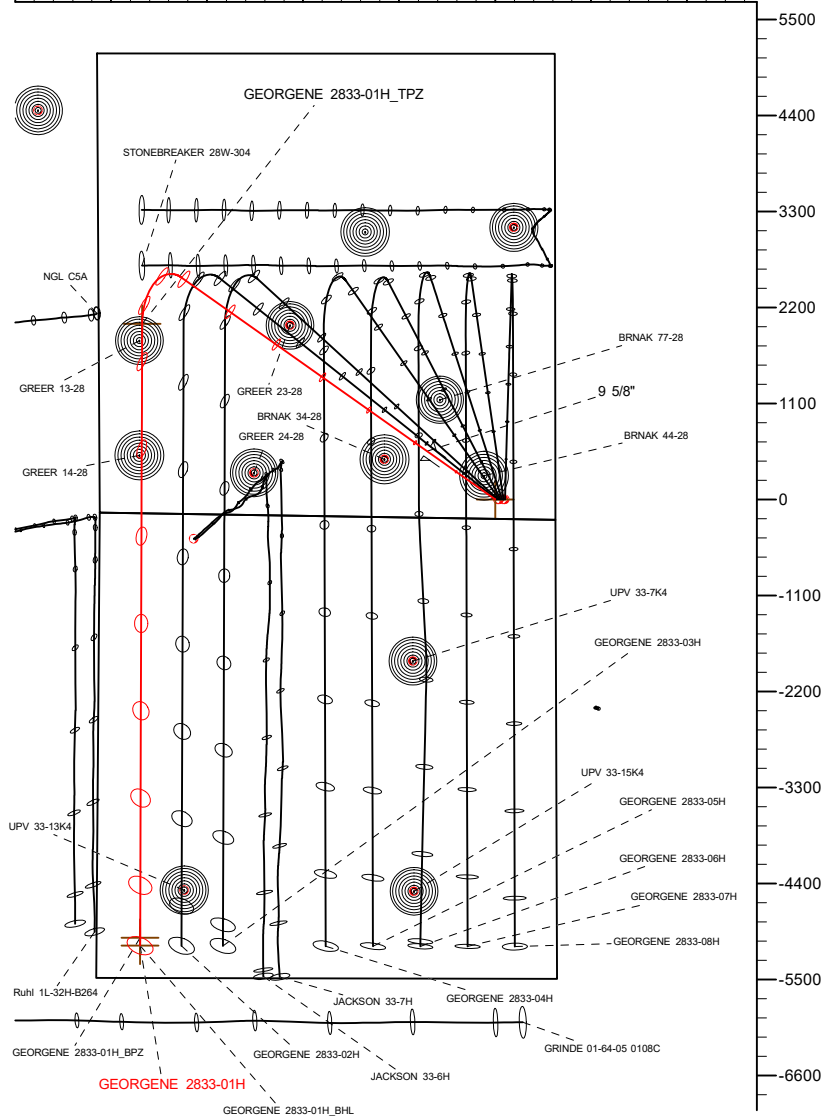
LP/TPZ  
2171' FSL  
499' FWL

BPZ  
460' FSL  
500' FWL

BHL  
370' FSL  
500' FWL

West(-)/East(+) (2200 usft/in)

5500 -4400 -3300 -2200 -1100 0 1100 2200

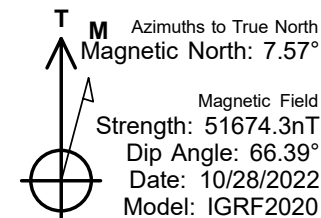
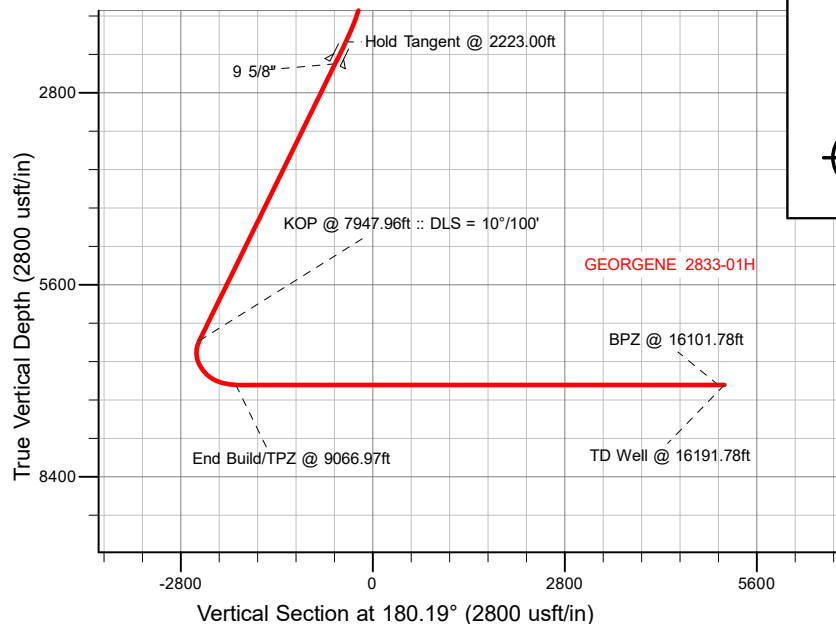


## SECTION DETAILS

MD	Inc	Azi	TVD	+N/-S	+E/-W	Dleg	TFace	VSect	Target
0.00	0.00	0.00	0.00	0.00	0.00	0.00	0.00	0.00	
200.00	0.00	0.00	200.00	0.00	0.00	0.00	0.00	0.00	
2223.00	40.46	305.28	2059.01	395.69	-559.26	2.00	305.28	-393.83	
7947.96	40.46	305.28	6414.90	2541.38	-3591.98	0.00	0.00	-2529.46	
9066.97	90.00	180.19	7060.00	2011.30	-4044.00	10.00	-118.12	-1997.88	
16191.78	90.00	180.19	7060.00	-5113.47	-4068.11	0.00	0.00	5126.93	GEORGENE 2833-01H_BHL

## DESIGN TARGET DETAILS

Name	TVD	Northing	Easting	Latitude	Longitude
GEORGENE 2833-01H_SHL	0.00	1281682.28	3265953.24	40.102696	-104.549238
GEORGENE 2833-01H_TPZ	7060.00	1283650.29	3261887.91	40.108217	-104.563696
GEORGENE 2833-01H_BPZ	7060.00	1276615.49	3261939.53	40.088905	-104.563777
GEORGENE 2833-01H_BHL	7060.00	1276525.49	3261940.19	40.088658	-104.563778



## WELL DETAILS: GEORGENE 2833-01H

GL = 5018'  
RKB = 24' @ 5042.00usft (RIG)

Plan: Design #3 (GEORGENE 2833-01H/Plan B)

Date: 10/28/2022

## Planning Report

<b>Database:</b>	EDM 5000.16 Single User Db	<b>Local Co-ordinate Reference:</b>	Well GEORGENE 2833-01H
<b>Company:</b>	VERDAD RESOURCES	<b>TVD Reference:</b>	RKB = 24' @ 5042.00usft (RIG)
<b>Project:</b>	WATTENBERG FIELD	<b>MD Reference:</b>	RKB = 24' @ 5042.00usft (RIG)
<b>Site:</b>	2N-64W-28 GEORGENE PAD	<b>North Reference:</b>	True
<b>Well:</b>	GEORGENE 2833-01H	<b>Survey Calculation Method:</b>	Minimum Curvature
<b>Wellbore:</b>	Plan B		
<b>Design:</b>	Design #3		

<b>Project</b>	WATTENBERG FIELD		
<b>Map System:</b>	US State Plane 1983	<b>System Datum:</b>	Mean Sea Level
<b>Geo Datum:</b>	North American Datum 1983		
<b>Map Zone:</b>	Colorado Northern Zone		

<b>Site</b>	2N-64W-28 GEORGENE PAD			
<b>Site Position:</b>		<b>Northing:</b>	1,281,723.49 usft	<b>Latitude:</b> 40.102807
<b>From:</b>	Lat/Long	<b>Easting:</b>	3,266,028.51 usft	<b>Longitude:</b> -104.548967
<b>Position Uncertainty:</b>	0.00 usft	<b>Slot Radius:</b>	13-3/16 "	

<b>Well</b>	GEORGENE 2833-01H			
<b>Well Position</b>	<b>+N/-S</b>	0.00 usft	<b>Northing:</b>	1,281,682.28 usft
	<b>+E/-W</b>	0.00 usft	<b>Easting:</b>	3,265,953.24 usft
<b>Position Uncertainty</b>		3.28 usft	<b>Wellhead Elevation:</b>	usft
<b>Grid Convergence:</b>		0.61 °	<b>Ground Level:</b>	5,018.00 usft

<b>Wellbore</b>	Plan B				
<b>Magnetics</b>	<b>Model Name</b>	<b>Sample Date</b>	<b>Declination (°)</b>	<b>Dip Angle (°)</b>	<b>Field Strength (nT)</b>
	IGRF202013	10/28/2022	7.57	66.39	51,674.26322045

<b>Design</b>	Design #3				
<b>Audit Notes:</b>					
<b>Version:</b>		<b>Phase:</b>	PLAN	<b>Tie On Depth:</b>	0.00
<b>Vertical Section:</b>	<b>Depth From (TVD) (usft)</b>	<b>+N/-S (usft)</b>	<b>+E/-W (usft)</b>	<b>Direction (°)</b>	
	0.00	0.00	0.00	180.19	

<b>Plan Survey Tool Program</b>	<b>Date</b>	10/28/2022			
<b>Depth From (usft)</b>	<b>Depth To (usft)</b>	<b>Survey (Wellbore)</b>	<b>Tool Name</b>	<b>Remarks</b>	
1	0.00	2,376.00	Design #3 (Plan B)	ISCWSA MWD	Fixed:v2:standard declination
2	2,376.00	16,191.78	Design #3 (Plan B)	ISCWSA MWD	Fixed:v2:standard declination

Planning Report

Database:	EDM 5000.16 Single User Db	Local Co-ordinate Reference:	Well GEORGENE 2833-01H
Company:	VERDAD RESOURCES	TVD Reference:	RKB = 24' @ 5042.00usft (RIG)
Project:	WATTENBERG FIELD	MD Reference:	RKB = 24' @ 5042.00usft (RIG)
Site:	2N-64W-28 GEORGENE PAD	North Reference:	True
Well:	GEORGENE 2833-01H	Survey Calculation Method:	Minimum Curvature
Wellbore:	Plan B		
Design:	Design #3		

Plan Sections										
Measured Depth (usft)	Inclination (°)	Azimuth (°)	Vertical Depth (usft)	+N/-S (usft)	+E/-W (usft)	Dogleg Rate (°/100usft)	Build Rate (°/100usft)	Turn Rate (°/100usft)	TFO (°)	Target
0.00	0.00	0.00	0.00	0.00	0.00	0.00	0.00	0.00	0.00	
200.00	0.00	0.00	200.00	0.00	0.00	0.00	0.00	0.00	0.00	
2,223.00	40.46	305.28	2,059.01	395.69	-559.26	2.00	2.00	0.00	305.28	
7,947.96	40.46	305.28	6,414.90	2,541.38	-3,591.98	0.00	0.00	0.00	0.00	
9,066.97	90.00	180.19	7,060.00	2,011.30	-4,044.00	10.00	4.43	-11.18	-118.12	
16,191.78	90.00	180.19	7,060.00	-5,113.47	-4,068.11	0.00	0.00	0.00	0.00	GEORGENE 2833-01

## Planning Report

<b>Database:</b>	EDM 5000.16 Single User Db	<b>Local Co-ordinate Reference:</b>	Well GEORGENE 2833-01H
<b>Company:</b>	VERDAD RESOURCES	<b>TVD Reference:</b>	RKB = 24' @ 5042.00usft (RIG)
<b>Project:</b>	WATTENBERG FIELD	<b>MD Reference:</b>	RKB = 24' @ 5042.00usft (RIG)
<b>Site:</b>	2N-64W-28 GEORGENE PAD	<b>North Reference:</b>	True
<b>Well:</b>	GEORGENE 2833-01H	<b>Survey Calculation Method:</b>	Minimum Curvature
<b>Wellbore:</b>	Plan B		
<b>Design:</b>	Design #3		

Planned Survey									
Measured Depth (usft)	Inclination (°)	Azimuth (°)	Vertical Depth (usft)	+N/-S (usft)	+E/-W (usft)	Vertical Section (usft)	Dogleg Rate (°/100usft)	Build Rate (°/100usft)	Turn Rate (°/100usft)
0.00	0.00	0.00	0.00	0.00	0.00	0.00	0.00	0.00	0.00
100.00	0.00	0.00	100.00	0.00	0.00	0.00	0.00	0.00	0.00
200.00	0.00	0.00	200.00	0.00	0.00	0.00	0.00	0.00	0.00
Begin Nudge @ 200.00ft									
300.00	2.00	305.28	299.98	1.01	-1.42	-1.00	2.00	2.00	0.00
400.00	4.00	305.28	399.84	4.03	-5.70	-4.01	2.00	2.00	0.00
500.00	6.00	305.28	499.45	9.06	-12.81	-9.02	2.00	2.00	0.00
600.00	8.00	305.28	598.70	16.10	-22.76	-16.03	2.00	2.00	0.00
700.00	10.00	305.28	697.47	25.14	-35.53	-25.02	2.00	2.00	0.00
800.00	12.00	305.28	795.62	36.16	-51.10	-35.99	2.00	2.00	0.00
900.00	14.00	305.28	893.06	49.15	-69.47	-48.92	2.00	2.00	0.00
1,000.00	16.00	305.28	989.64	64.10	-90.59	-63.80	2.00	2.00	0.00
1,100.00	18.00	305.28	1,085.27	80.98	-114.46	-80.60	2.00	2.00	0.00
1,200.00	20.00	305.28	1,179.82	99.79	-141.04	-99.32	2.00	2.00	0.00
1,300.00	22.00	305.28	1,273.17	120.48	-170.29	-119.92	2.00	2.00	0.00
1,400.00	24.00	305.28	1,365.21	143.05	-202.19	-142.38	2.00	2.00	0.00
1,500.00	26.00	305.28	1,455.84	167.46	-236.68	-166.67	2.00	2.00	0.00
1,600.00	28.00	305.28	1,544.94	193.68	-273.74	-192.77	2.00	2.00	0.00
1,700.00	30.00	305.28	1,632.39	221.68	-313.32	-220.64	2.00	2.00	0.00
1,800.00	32.00	305.28	1,718.11	251.42	-355.36	-250.24	2.00	2.00	0.00
1,900.00	34.00	305.28	1,801.97	282.88	-399.82	-281.55	2.00	2.00	0.00
2,000.00	36.00	305.28	1,883.88	316.01	-446.64	-314.52	2.00	2.00	0.00
2,100.00	38.00	305.28	1,963.74	350.76	-495.77	-349.12	2.00	2.00	0.00
2,200.00	40.00	305.28	2,041.45	387.11	-547.14	-385.29	2.00	2.00	0.00
2,223.00	40.46	305.28	2,059.01	395.69	-559.26	-393.83	2.00	2.00	0.00
Hold Tangent @ 2223.00ft									
2,300.00	40.46	305.28	2,117.60	424.55	-600.05	-422.56	0.00	0.00	0.00
2,400.00	40.46	305.28	2,193.68	462.03	-653.03	-459.86	0.00	0.00	0.00
2,500.00	40.46	305.28	2,269.77	499.51	-706.00	-497.16	0.00	0.00	0.00
2,600.00	40.46	305.28	2,345.85	536.99	-758.97	-534.47	0.00	0.00	0.00
2,639.62	40.46	305.28	2,376.00	551.84	-779.96	-549.25	0.00	0.00	0.00
9 5/8"									
2,700.00	40.46	305.28	2,421.94	574.47	-811.95	-571.77	0.00	0.00	0.00
2,800.00	40.46	305.28	2,498.03	611.95	-864.92	-609.07	0.00	0.00	0.00
2,900.00	40.46	305.28	2,574.11	649.43	-917.90	-646.38	0.00	0.00	0.00
3,000.00	40.46	305.28	2,650.20	686.91	-970.87	-683.68	0.00	0.00	0.00
3,100.00	40.46	305.28	2,726.28	724.38	-1,023.84	-720.99	0.00	0.00	0.00
3,200.00	40.46	305.28	2,802.37	761.86	-1,076.82	-758.29	0.00	0.00	0.00
3,300.00	40.46	305.28	2,878.46	799.34	-1,129.79	-795.59	0.00	0.00	0.00
3,400.00	40.46	305.28	2,954.54	836.82	-1,182.76	-832.90	0.00	0.00	0.00
3,500.00	40.46	305.28	3,030.63	874.30	-1,235.74	-870.20	0.00	0.00	0.00
3,600.00	40.46	305.28	3,106.71	911.78	-1,288.71	-907.50	0.00	0.00	0.00
3,700.00	40.46	305.28	3,182.80	949.26	-1,341.68	-944.81	0.00	0.00	0.00
3,800.00	40.46	305.28	3,258.89	986.74	-1,394.66	-982.11	0.00	0.00	0.00
3,900.00	40.46	305.28	3,334.97	1,024.22	-1,447.63	-1,019.42	0.00	0.00	0.00
4,000.00	40.46	305.28	3,411.06	1,061.70	-1,500.61	-1,056.72	0.00	0.00	0.00
4,100.00	40.46	305.28	3,487.14	1,099.18	-1,553.58	-1,094.02	0.00	0.00	0.00
4,200.00	40.46	305.28	3,563.23	1,136.66	-1,606.55	-1,131.33	0.00	0.00	0.00
4,300.00	40.46	305.28	3,639.31	1,174.14	-1,659.53	-1,168.63	0.00	0.00	0.00
4,400.00	40.46	305.28	3,715.40	1,211.62	-1,712.50	-1,205.94	0.00	0.00	0.00
4,500.00	40.46	305.28	3,791.49	1,249.10	-1,765.47	-1,243.24	0.00	0.00	0.00
4,600.00	40.46	305.28	3,867.57	1,286.58	-1,818.45	-1,280.54	0.00	0.00	0.00
4,700.00	40.46	305.28	3,943.66	1,324.06	-1,871.42	-1,317.85	0.00	0.00	0.00

# Planning Report

<b>Database:</b>	EDM 5000.16 Single User Db	<b>Local Co-ordinate Reference:</b>	Well GEORGENE 2833-01H
<b>Company:</b>	VERDAD RESOURCES	<b>TVD Reference:</b>	RKB = 24' @ 5042.00usft (RIG)
<b>Project:</b>	WATTENBERG FIELD	<b>MD Reference:</b>	RKB = 24' @ 5042.00usft (RIG)
<b>Site:</b>	2N-64W-28 GEORGENE PAD	<b>North Reference:</b>	True
<b>Well:</b>	GEORGENE 2833-01H	<b>Survey Calculation Method:</b>	Minimum Curvature
<b>Wellbore:</b>	Plan B		
<b>Design:</b>	Design #3		

Planned Survey									
Measured Depth (usft)	Inclination (°)	Azimuth (°)	Vertical Depth (usft)	+N/-S (usft)	+E/-W (usft)	Vertical Section (usft)	Dogleg Rate (°/100usft)	Build Rate (°/100usft)	Turn Rate (°/100usft)
4,800.00	40.46	305.28	4,019.74	1,361.54	-1,924.40	-1,355.15	0.00	0.00	0.00
4,900.00	40.46	305.28	4,095.83	1,399.02	-1,977.37	-1,392.45	0.00	0.00	0.00
5,000.00	40.46	305.28	4,171.92	1,436.50	-2,030.34	-1,429.76	0.00	0.00	0.00
5,100.00	40.46	305.28	4,248.00	1,473.98	-2,083.32	-1,467.06	0.00	0.00	0.00
5,200.00	40.46	305.28	4,324.09	1,511.46	-2,136.29	-1,504.37	0.00	0.00	0.00
5,300.00	40.46	305.28	4,400.17	1,548.94	-2,189.26	-1,541.67	0.00	0.00	0.00
5,400.00	40.46	305.28	4,476.26	1,586.42	-2,242.24	-1,578.97	0.00	0.00	0.00
5,500.00	40.46	305.28	4,552.35	1,623.90	-2,295.21	-1,616.28	0.00	0.00	0.00
5,600.00	40.46	305.28	4,628.43	1,661.38	-2,348.18	-1,653.58	0.00	0.00	0.00
5,700.00	40.46	305.28	4,704.52	1,698.86	-2,401.16	-1,690.88	0.00	0.00	0.00
5,800.00	40.46	305.28	4,780.60	1,736.34	-2,454.13	-1,728.19	0.00	0.00	0.00
5,900.00	40.46	305.28	4,856.69	1,773.82	-2,507.11	-1,765.49	0.00	0.00	0.00
6,000.00	40.46	305.28	4,932.78	1,811.30	-2,560.08	-1,802.80	0.00	0.00	0.00
6,100.00	40.46	305.28	5,008.86	1,848.78	-2,613.05	-1,840.10	0.00	0.00	0.00
6,200.00	40.46	305.28	5,084.95	1,886.25	-2,666.03	-1,877.40	0.00	0.00	0.00
6,300.00	40.46	305.28	5,161.03	1,923.73	-2,719.00	-1,914.71	0.00	0.00	0.00
6,400.00	40.46	305.28	5,237.12	1,961.21	-2,771.97	-1,952.01	0.00	0.00	0.00
6,500.00	40.46	305.28	5,313.21	1,998.69	-2,824.95	-1,989.32	0.00	0.00	0.00
6,600.00	40.46	305.28	5,389.29	2,036.17	-2,877.92	-2,026.62	0.00	0.00	0.00
6,700.00	40.46	305.28	5,465.38	2,073.65	-2,930.89	-2,063.92	0.00	0.00	0.00
6,800.00	40.46	305.28	5,541.46	2,111.13	-2,983.87	-2,101.23	0.00	0.00	0.00
6,900.00	40.46	305.28	5,617.55	2,148.61	-3,036.84	-2,138.53	0.00	0.00	0.00
7,000.00	40.46	305.28	5,693.63	2,186.09	-3,089.82	-2,175.83	0.00	0.00	0.00
7,100.00	40.46	305.28	5,769.72	2,223.57	-3,142.79	-2,213.14	0.00	0.00	0.00
7,200.00	40.46	305.28	5,845.81	2,261.05	-3,195.76	-2,250.44	0.00	0.00	0.00
7,300.00	40.46	305.28	5,921.89	2,298.53	-3,248.74	-2,287.75	0.00	0.00	0.00
7,400.00	40.46	305.28	5,997.98	2,336.01	-3,301.71	-2,325.05	0.00	0.00	0.00
7,500.00	40.46	305.28	6,074.06	2,373.49	-3,354.68	-2,362.35	0.00	0.00	0.00
7,600.00	40.46	305.28	6,150.15	2,410.97	-3,407.66	-2,399.66	0.00	0.00	0.00
7,700.00	40.46	305.28	6,226.24	2,448.45	-3,460.63	-2,436.96	0.00	0.00	0.00
7,800.00	40.46	305.28	6,302.32	2,485.93	-3,513.60	-2,474.26	0.00	0.00	0.00
7,900.00	40.46	305.28	6,378.41	2,523.41	-3,566.58	-2,511.57	0.00	0.00	0.00
7,947.96	40.46	305.28	6,414.90	2,541.38	-3,591.98	-2,529.46	0.00	0.00	0.00
KOP @ 7947.96ft :: DLS = 10°/100'									
7,950.00	40.36	305.00	6,416.45	2,542.15	-3,593.07	-2,530.22	10.00	-4.70	-13.62
8,000.00	38.24	297.85	6,455.16	2,558.67	-3,620.03	-2,546.65	10.00	-4.26	-14.30
8,050.00	36.58	290.08	6,494.90	2,571.03	-3,647.72	-2,558.91	10.00	-3.31	-15.54
8,100.00	35.47	281.79	6,535.36	2,579.11	-3,675.93	-2,566.91	10.00	-2.23	-16.59
8,150.00	34.95	273.16	6,576.24	2,582.86	-3,704.44	-2,570.57	10.00	-1.04	-17.26
8,200.00	35.05	264.44	6,617.23	2,582.26	-3,733.05	-2,569.87	10.00	0.20	-17.44
8,250.00	35.76	255.89	6,658.00	2,577.30	-3,761.53	-2,564.81	10.00	1.43	-17.09
8,300.00	37.06	247.75	6,698.27	2,568.03	-3,789.66	-2,555.45	10.00	2.59	-16.28
8,350.00	38.87	240.17	6,737.71	2,554.51	-3,817.23	-2,541.84	10.00	3.63	-15.16
8,400.00	41.14	233.23	6,776.02	2,536.85	-3,844.03	-2,524.09	10.00	4.53	-13.88
8,450.00	43.78	226.94	6,812.93	2,515.18	-3,869.86	-2,502.33	10.00	5.29	-12.58
8,500.00	46.74	221.25	6,848.13	2,489.67	-3,894.51	-2,476.74	10.00	5.91	-11.36
8,550.00	49.95	216.12	6,881.38	2,460.50	-3,917.81	-2,447.50	10.00	6.42	-10.27
8,600.00	53.36	211.46	6,912.40	2,427.91	-3,939.58	-2,414.84	10.00	6.83	-9.32
8,650.00	56.94	207.21	6,940.98	2,392.15	-3,959.64	-2,379.00	10.00	7.16	-8.51
8,700.00	60.66	203.29	6,966.88	2,353.47	-3,977.85	-2,340.27	10.00	7.43	-7.83
8,750.00	64.48	199.66	6,989.92	2,312.18	-3,994.07	-2,298.93	10.00	7.64	-7.27
8,800.00	68.38	196.25	7,009.91	2,268.60	-4,008.17	-2,255.29	10.00	7.81	-6.82
8,850.00	72.35	193.02	7,026.71	2,223.04	-4,020.05	-2,209.70	10.00	7.94	-6.46
8,900.00	76.37	189.93	7,040.19	2,175.87	-4,029.61	-2,162.50	10.00	8.04	-6.17

## Planning Report

<b>Database:</b>	EDM 5000.16 Single User Db	<b>Local Co-ordinate Reference:</b>	Well GEORGENE 2833-01H
<b>Company:</b>	VERDAD RESOURCES	<b>TVD Reference:</b>	RKB = 24' @ 5042.00usft (RIG)
<b>Project:</b>	WATTENBERG FIELD	<b>MD Reference:</b>	RKB = 24' @ 5042.00usft (RIG)
<b>Site:</b>	2N-64W-28 GEORGENE PAD	<b>North Reference:</b>	True
<b>Well:</b>	GEORGENE 2833-01H	<b>Survey Calculation Method:</b>	Minimum Curvature
<b>Wellbore:</b>	Plan B		
<b>Design:</b>	Design #3		

Planned Survey										
Measured Depth (usft)	Inclination (°)	Azimuth (°)	Vertical Depth (usft)	+N/-S (usft)	+E/-W (usft)	Vertical Section (usft)	Dogleg Rate (°/100usft)	Build Rate (°/100usft)	Turn Rate (°/100usft)	
8,950.00	80.43	186.95	7,050.25	2,127.44	-4,036.79	-2,114.04	10.00	8.11	-5.97	
9,000.00	84.51	184.04	7,056.80	2,078.11	-4,041.53	-2,064.70	10.00	8.16	-5.83	
9,050.00	88.61	181.17	7,059.80	2,028.27	-4,043.80	-2,014.85	10.00	8.19	-5.75	
9,066.97	90.00	180.19	7,060.00	2,011.30	-4,044.00	-1,997.88	10.00	8.20	-5.72	
End Build/TPZ @ 9066.97ft										
9,100.00	90.00	180.19	7,060.00	1,978.27	-4,044.11	-1,964.85	0.00	0.00	0.00	
9,200.00	90.00	180.19	7,060.00	1,878.27	-4,044.45	-1,864.85	0.00	0.00	0.00	
9,300.00	90.00	180.19	7,060.00	1,778.27	-4,044.79	-1,764.85	0.00	0.00	0.00	
9,400.00	90.00	180.19	7,060.00	1,678.27	-4,045.12	-1,664.85	0.00	0.00	0.00	
9,500.00	90.00	180.19	7,060.00	1,578.27	-4,045.46	-1,564.85	0.00	0.00	0.00	
9,600.00	90.00	180.19	7,060.00	1,478.28	-4,045.80	-1,464.85	0.00	0.00	0.00	
9,700.00	90.00	180.19	7,060.00	1,378.28	-4,046.14	-1,364.85	0.00	0.00	0.00	
9,800.00	90.00	180.19	7,060.00	1,278.28	-4,046.48	-1,264.85	0.00	0.00	0.00	
9,900.00	90.00	180.19	7,060.00	1,178.28	-4,046.82	-1,164.85	0.00	0.00	0.00	
10,000.00	90.00	180.19	7,060.00	1,078.28	-4,047.15	-1,064.85	0.00	0.00	0.00	
10,100.00	90.00	180.19	7,060.00	978.28	-4,047.49	-964.85	0.00	0.00	0.00	
10,200.00	90.00	180.19	7,060.00	878.28	-4,047.83	-864.85	0.00	0.00	0.00	
10,300.00	90.00	180.19	7,060.00	778.28	-4,048.17	-764.85	0.00	0.00	0.00	
10,400.00	90.00	180.19	7,060.00	678.28	-4,048.51	-664.85	0.00	0.00	0.00	
10,500.00	90.00	180.19	7,060.00	578.28	-4,048.85	-564.85	0.00	0.00	0.00	
10,600.00	90.00	180.19	7,060.00	478.28	-4,049.19	-464.85	0.00	0.00	0.00	
10,700.00	90.00	180.19	7,060.00	378.28	-4,049.52	-364.85	0.00	0.00	0.00	
10,800.00	90.00	180.19	7,060.00	278.28	-4,049.86	-264.85	0.00	0.00	0.00	
10,900.00	90.00	180.19	7,060.00	178.28	-4,050.20	-164.85	0.00	0.00	0.00	
11,000.00	90.00	180.19	7,060.00	78.28	-4,050.54	-64.85	0.00	0.00	0.00	
11,100.00	90.00	180.19	7,060.00	-21.72	-4,050.88	35.15	0.00	0.00	0.00	
11,200.00	90.00	180.19	7,060.00	-121.72	-4,051.22	135.15	0.00	0.00	0.00	
11,300.00	90.00	180.19	7,060.00	-221.72	-4,051.55	235.15	0.00	0.00	0.00	
11,400.00	90.00	180.19	7,060.00	-321.71	-4,051.89	335.15	0.00	0.00	0.00	
11,500.00	90.00	180.19	7,060.00	-421.71	-4,052.23	435.15	0.00	0.00	0.00	
11,600.00	90.00	180.19	7,060.00	-521.71	-4,052.57	535.15	0.00	0.00	0.00	
11,700.00	90.00	180.19	7,060.00	-621.71	-4,052.91	635.15	0.00	0.00	0.00	
11,800.00	90.00	180.19	7,060.00	-721.71	-4,053.25	735.15	0.00	0.00	0.00	
11,900.00	90.00	180.19	7,060.00	-821.71	-4,053.59	835.15	0.00	0.00	0.00	
12,000.00	90.00	180.19	7,060.00	-921.71	-4,053.92	935.15	0.00	0.00	0.00	
12,100.00	90.00	180.19	7,060.00	-1,021.71	-4,054.26	1,035.15	0.00	0.00	0.00	
12,200.00	90.00	180.19	7,060.00	-1,121.71	-4,054.60	1,135.15	0.00	0.00	0.00	
12,300.00	90.00	180.19	7,060.00	-1,221.71	-4,054.94	1,235.15	0.00	0.00	0.00	
12,400.00	90.00	180.19	7,060.00	-1,321.71	-4,055.28	1,335.15	0.00	0.00	0.00	
12,500.00	90.00	180.19	7,060.00	-1,421.71	-4,055.62	1,435.15	0.00	0.00	0.00	
12,600.00	90.00	180.19	7,060.00	-1,521.71	-4,055.95	1,535.15	0.00	0.00	0.00	
12,700.00	90.00	180.19	7,060.00	-1,621.71	-4,056.29	1,635.15	0.00	0.00	0.00	
12,800.00	90.00	180.19	7,060.00	-1,721.71	-4,056.63	1,735.15	0.00	0.00	0.00	
12,900.00	90.00	180.19	7,060.00	-1,821.71	-4,056.97	1,835.15	0.00	0.00	0.00	
13,000.00	90.00	180.19	7,060.00	-1,921.71	-4,057.31	1,935.15	0.00	0.00	0.00	
13,100.00	90.00	180.19	7,060.00	-2,021.70	-4,057.65	2,035.15	0.00	0.00	0.00	
13,200.00	90.00	180.19	7,060.00	-2,121.70	-4,057.98	2,135.15	0.00	0.00	0.00	
13,300.00	90.00	180.19	7,060.00	-2,221.70	-4,058.32	2,235.15	0.00	0.00	0.00	
13,400.00	90.00	180.19	7,060.00	-2,321.70	-4,058.66	2,335.15	0.00	0.00	0.00	
13,500.00	90.00	180.19	7,060.00	-2,421.70	-4,059.00	2,435.15	0.00	0.00	0.00	
13,600.00	90.00	180.19	7,060.00	-2,521.70	-4,059.34	2,535.15	0.00	0.00	0.00	
13,700.00	90.00	180.19	7,060.00	-2,621.70	-4,059.68	2,635.15	0.00	0.00	0.00	
13,800.00	90.00	180.19	7,060.00	-2,721.70	-4,060.02	2,735.15	0.00	0.00	0.00	

## Planning Report

<b>Database:</b>	EDM 5000.16 Single User Db	<b>Local Co-ordinate Reference:</b>	Well GEORGENE 2833-01H
<b>Company:</b>	VERDAD RESOURCES	<b>TVD Reference:</b>	RKB = 24' @ 5042.00usft (RIG)
<b>Project:</b>	WATTENBERG FIELD	<b>MD Reference:</b>	RKB = 24' @ 5042.00usft (RIG)
<b>Site:</b>	2N-64W-28 GEORGENE PAD	<b>North Reference:</b>	True
<b>Well:</b>	GEORGENE 2833-01H	<b>Survey Calculation Method:</b>	Minimum Curvature
<b>Wellbore:</b>	Plan B		
<b>Design:</b>	Design #3		

Planned Survey										
Measured Depth (usft)	Inclination (°)	Azimuth (°)	Vertical Depth (usft)	+N/-S (usft)	+E/-W (usft)	Vertical Section (usft)	Dogleg Rate (°/100usft)	Build Rate (°/100usft)	Turn Rate (°/100usft)	
13,900.00	90.00	180.19	7,060.00	-2,821.70	-4,060.35	2,835.15	0.00	0.00	0.00	
14,000.00	90.00	180.19	7,060.00	-2,921.70	-4,060.69	2,935.15	0.00	0.00	0.00	
14,100.00	90.00	180.19	7,060.00	-3,021.70	-4,061.03	3,035.15	0.00	0.00	0.00	
14,200.00	90.00	180.19	7,060.00	-3,121.70	-4,061.37	3,135.15	0.00	0.00	0.00	
14,300.00	90.00	180.19	7,060.00	-3,221.70	-4,061.71	3,235.15	0.00	0.00	0.00	
14,400.00	90.00	180.19	7,060.00	-3,321.70	-4,062.05	3,335.15	0.00	0.00	0.00	
14,500.00	90.00	180.19	7,060.00	-3,421.70	-4,062.38	3,435.15	0.00	0.00	0.00	
14,600.00	90.00	180.19	7,060.00	-3,521.70	-4,062.72	3,535.15	0.00	0.00	0.00	
14,700.00	90.00	180.19	7,060.00	-3,621.70	-4,063.06	3,635.15	0.00	0.00	0.00	
14,800.00	90.00	180.19	7,060.00	-3,721.70	-4,063.40	3,735.15	0.00	0.00	0.00	
14,900.00	90.00	180.19	7,060.00	-3,821.69	-4,063.74	3,835.15	0.00	0.00	0.00	
15,000.00	90.00	180.19	7,060.00	-3,921.69	-4,064.08	3,935.15	0.00	0.00	0.00	
15,100.00	90.00	180.19	7,060.00	-4,021.69	-4,064.42	4,035.15	0.00	0.00	0.00	
15,200.00	90.00	180.19	7,060.00	-4,121.69	-4,064.75	4,135.15	0.00	0.00	0.00	
15,300.00	90.00	180.19	7,060.00	-4,221.69	-4,065.09	4,235.15	0.00	0.00	0.00	
15,400.00	90.00	180.19	7,060.00	-4,321.69	-4,065.43	4,335.15	0.00	0.00	0.00	
15,500.00	90.00	180.19	7,060.00	-4,421.69	-4,065.77	4,435.15	0.00	0.00	0.00	
15,600.00	90.00	180.19	7,060.00	-4,521.69	-4,066.11	4,535.15	0.00	0.00	0.00	
15,700.00	90.00	180.19	7,060.00	-4,621.69	-4,066.45	4,635.15	0.00	0.00	0.00	
15,800.00	90.00	180.19	7,060.00	-4,721.69	-4,066.78	4,735.15	0.00	0.00	0.00	
15,900.00	90.00	180.19	7,060.00	-4,821.69	-4,067.12	4,835.15	0.00	0.00	0.00	
16,000.00	90.00	180.19	7,060.00	-4,921.69	-4,067.46	4,935.15	0.00	0.00	0.00	
16,100.00	90.00	180.19	7,060.00	-5,021.69	-4,067.80	5,035.15	0.00	0.00	0.00	
16,101.78	90.00	180.19	7,060.00	-5,023.47	-4,067.81	5,036.93	0.00	0.00	0.00	
<b>BPZ @ 16101.78ft</b>										
16,191.78	90.00	180.19	7,060.00	-5,113.47	-4,068.11	5,126.93	0.00	0.00	0.00	
<b>TD Well @ 16191.78ft</b>										

Casing Points					
Measured Depth (usft)	Vertical Depth (usft)	Name		Casing Diameter (")	Hole Diameter (")
2,639.62	2,376.00	9 5/8"		9-5/8	13-1/2

Plan Annotations					
Measured Depth (usft)	Vertical Depth (usft)	Local Coordinates		Comment	
		+N/-S (usft)	+E/-W (usft)		
200.00	200.00	0.00	0.00	Begin Nudge @ 200.00ft	
2,223.00	2,059.01	395.69	-559.26	Hold Tangent @ 2223.00ft	
7,947.96	6,414.90	2,541.38	-3,591.98	KOP @ 7947.96ft :: DLS = 10°/100'	
9,066.97	7,060.00	2,011.30	-4,044.00	End Build/TPZ @ 9066.97ft	
16,101.78	7,060.00	-5,023.47	-4,067.81	BPZ @ 16101.78ft	
16,191.78	7,060.00	-5,113.47	-4,068.11	TD Well @ 16191.78ft	