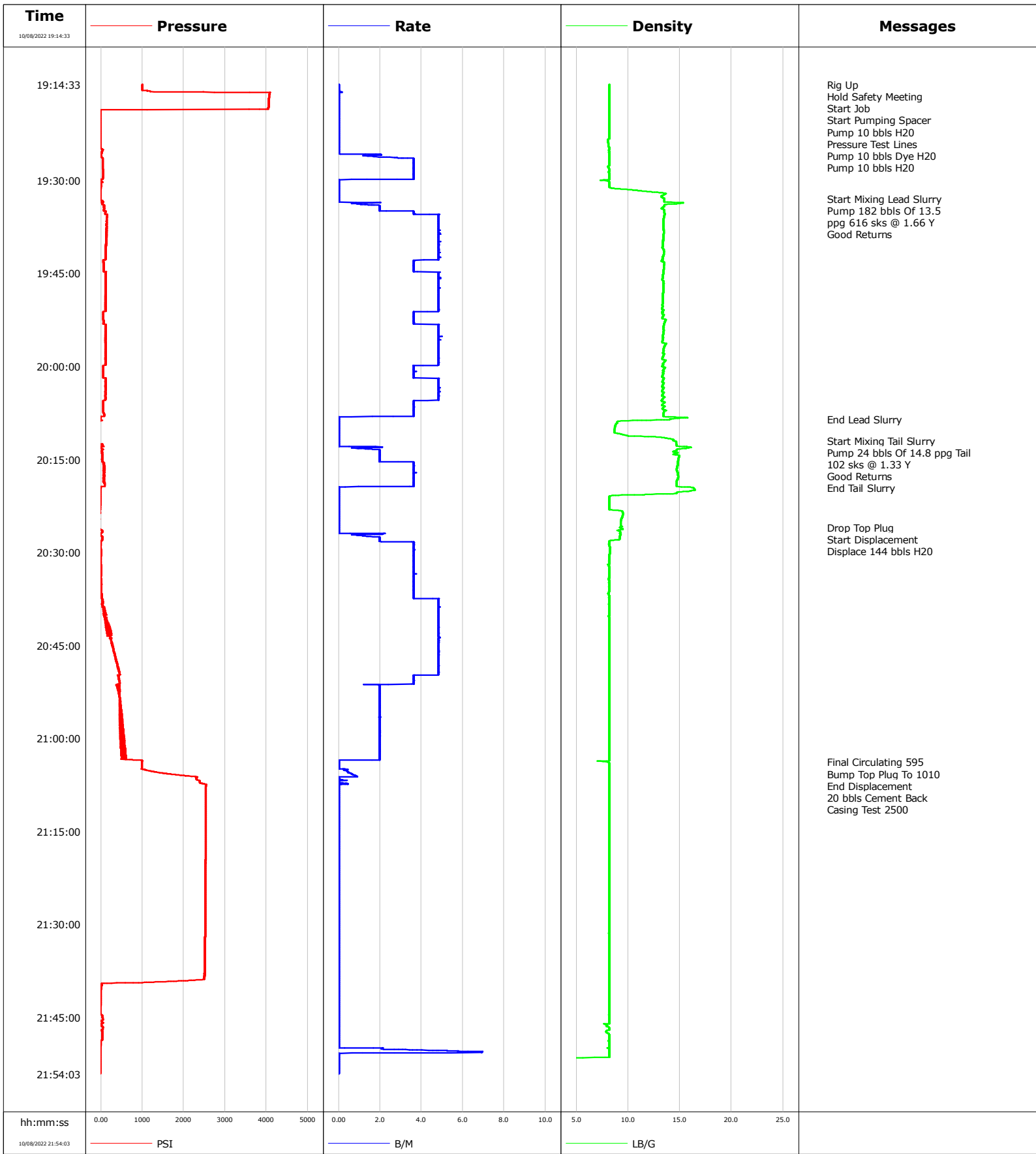


Well	GUTTERSEN DD17-725	Client	Chevron
Field	Wattenberg	SIR No.	
Engineer	Justin Zika	Job Type	Surface
Country	United States	Job Date	10-08-2022



				Customer Chevron			Job Number	
Well GUTTERSEN DD17-725		Location (legal) NENE SEC 8 T3N R63W		Schlumberger Location			Job Start Oct/08/2022	
Field Wattenberg		Formation Name/Type Shale		Deviation deg	Bit Size 13.5 in	Well MD 1948.0 ft	Well TVD ft	
County Weld		State/Province Colorado		BHP psi	BHST 115 degF	BHCT 91 degF	Pore Press. Gradient lb/gal	
Well Master 0064750192		API/UWI 05-123-49065-00-00						
Rig Name Patterson 268	Drilled For Oil	Service Via Land		Casing/Liner				
				Depth, ft	Size, in	Weight, lb/ft	Grade	Thread
Offshore Zone	Well Class Old	Well Type Development		109.0	16.0	36.94	A-52A	BUTT
				1938.0	9.6	36.0	J-55	
Drilling Fluid Type		Max. Density lb/gal	Plastic Viscosity cP	Tubing/Drill Pipe				
				T/D	Depth, ft	Size, in	Weight, lb/ft	Grade
Service Line Cementing	Job Type Surface							
Max. Allowed Tub. Press psi	Max. Allowed Ann. Press psi	WH Connection		Perforations/Open Hole				
				Top, ft	Bottom, ft	shot/ft	No. of Shots	Total Interval ft
				ft	ft			
				ft	ft			Diameter in
				Treat Down Casing	Displacement 144.0 bbl	Packer Type	Packer Depth ft	
				Tubing Vol. bbl	Casing Vol. 147.0 bbl	Annular Vol. 195.0 bbl	Openhole Vol. 159.0 bbl	
Casing/Tubing Secured <input type="checkbox"/>	1 Hole Vol. Circulated prior to Cement <input type="checkbox"/>			Casing Tools			Squeeze Job	
Lift Pressure psi				Shoe Type		Squeeze Type		
Pipe Rotated <input type="checkbox"/>	Pipe Reciprocated <input type="checkbox"/>			Shoe Depth ft		Tool Type		
No. Centralizers	Top Plugs	Bottom Plugs		Stage Tool Type			Tool Depth ft	
Cement Head Type				Stage Tool Depth ft			Tail Pipe Size in	
Job Scheduled For Oct/08/2022 13:00	Arrived on Location Oct/08/2022 13:00	Leave Location Oct/08/2022 22:30		Collar Type			Tail Pipe Depth ft	
				Collar Depth ft			Sqz. Total Vol. bbl	
Date	Time 24-hr clock	Treating Pressure PSI	Flow Rate B/M	Density LB/G	Volume BBL	Message		
10/08/2022	19:14:33	1002	0.0	8.17	0.0	Started Acquisition		
10/08/2022	19:14:35	1002	0.0	8.17	0.0	Start Job		
10/08/2022	19:14:36	1002	0.0	8.17	0.0	Start Pumping Spacer		
10/08/2022	19:14:38	1002	0.0	8.18	0.0	Pump 10 bbls H2O		
10/08/2022	19:14:41	1002	0.0	8.17	0.0	Pressure Test Lines		
10/08/2022	19:16:13	4069	0.0	8.17	0.0			
10/08/2022	19:17:53	4050	0.0	8.17	0.0			
10/08/2022	19:19:33	-19	0.0	8.18	0.0			
10/08/2022	19:24:33	-19	0.0	8.07	0.0			
10/08/2022	19:25:00	27	0.0	8.17	0.0	Pump 10 bbls Dye H2O		
10/08/2022	19:26:13	8	1.8	8.17	0.7			
10/08/2022	19:27:53	40	3.6	8.06	6.5			
10/08/2022	19:28:00	45	3.6	8.12	6.9	Pump 10 bbls H2O		
10/08/2022	19:29:33	49	3.6	8.17	12.6			
10/08/2022	19:31:13	-10	0.0	8.27	13.8			
10/08/2022	19:32:53	-15	0.0	13.40	13.8			
10/08/2022	19:33:00	-15	0.0	13.50	13.8	Start Mixing Lead Slurry		
10/08/2022	19:34:33	72	2.0	13.24	15.4			
10/08/2022	19:36:13	141	4.9	13.42	21.6			
10/08/2022	19:37:53	132	4.8	13.43	29.6			
10/08/2022	19:39:33	127	4.8	13.38	37.7			

Well GUTTERSEN DD17-725			Field Wattenberg		Job Start Oct/08/2022	Customer Chevron	Job Number
Date	Time 24-hr clock	Treating Pressure PSI	Flow Rate B/M	Density LB/G	Volume BBL	Message	
10/08/2022	19:42:53	49	4.1	13.29	53.8		
10/08/2022	19:44:33	63	3.6	13.42	59.9		
10/08/2022	19:46:13	114	4.9	13.40	67.7		
10/08/2022	19:47:53	114	4.9	13.39	75.7		
10/08/2022	19:49:33	114	4.8	13.37	83.8		
10/08/2022	19:51:13	59	3.6	13.37	91.8		
10/08/2022	19:52:53	63	3.6	13.53	97.9		
10/08/2022	19:54:33	109	4.8	13.39	105.5		
10/08/2022	19:56:13	109	4.8	13.39	113.6		
10/08/2022	19:57:53	114	4.8	13.37	121.7		
10/08/2022	19:59:33	104	4.9	13.37	129.8		
10/08/2022	20:01:13	54	3.6	13.40	136.2		
10/08/2022	20:02:53	114	4.8	13.38	143.4		
10/08/2022	20:04:33	109	4.8	13.33	151.5		
10/08/2022	20:06:13	59	3.6	13.29	158.7		
10/08/2022	20:07:53	77	3.6	13.41	164.7		
10/08/2022	20:08:35	-24	0.0	14.12	165.5		End Lead Slurry
10/08/2022	20:09:33	-33	0.0	8.76	165.5		
10/08/2022	20:11:13	-38	0.0	9.99	165.5		
10/08/2022	20:12:00	-38	0.0	14.40	165.5		Start Mixing Tail Slurry
10/08/2022	20:12:53	-10	0.0	14.70	165.5		
10/08/2022	20:14:33	31	2.0	14.92	168.4		
10/08/2022	20:16:13	86	3.6	14.74	173.0		
10/08/2022	20:17:53	72	3.6	14.82	179.1		
10/08/2022	20:19:00	86	3.6	14.70	183.1		End Tail Slurry
10/08/2022	20:19:33	-5	0.0	16.25	184.6		
10/08/2022	20:21:13	-24	0.0	8.17	184.6		
10/08/2022	20:24:33	-28	0.0	9.37	184.6		
10/08/2022	20:26:00	-28	0.0	9.19	184.6		Drop Top Plug
10/08/2022	20:26:13	-28	0.0	9.43	184.6		
10/08/2022	20:27:53	31	2.0	9.18	186.2		
10/08/2022	20:29:33	4	3.6	8.25	191.6		
10/08/2022	20:31:13	-1	3.6	8.16	197.6		
10/08/2022	20:32:53	8	3.6	8.16	203.7		
10/08/2022	20:34:33	8	3.6	8.16	209.7		
10/08/2022	20:36:13	4	3.6	8.16	215.8		
10/08/2022	20:37:53	49	4.9	8.16	222.3		
10/08/2022	20:39:33	114	4.8	8.17	230.4		
10/08/2022	20:41:13	155	4.9	8.17	238.5		
10/08/2022	20:42:53	228	4.9	8.17	246.6		
10/08/2022	20:44:33	265	4.8	8.18	254.6		
10/08/2022	20:46:13	324	4.8	8.18	262.7		
10/08/2022	20:47:53	388	4.9	8.18	270.8		
10/08/2022	20:49:33	452	4.9	8.18	278.8		
10/08/2022	20:51:13	461	3.6	8.18	285.2		
10/08/2022	20:52:53	439	2.0	8.18	288.5		
10/08/2022	20:54:33	448	2.0	8.18	291.8		
10/08/2022	20:56:13	480	2.0	8.18	295.1		
10/08/2022	20:57:53	452	2.0	8.17	298.4		
10/08/2022	20:59:33	530	2.0	8.18	301.6		
10/08/2022	21:01:13	526	2.0	8.18	304.9		
10/08/2022	21:02:53	558	2.0	8.18	308.2		
10/08/2022	21:03:46	988	0.0	8.04	309.4		Final Circulating 595
10/08/2022	21:04:33	983	0.0	8.18	309.4		

Well		Field		Job Start		Customer		Job Number	
GUTTERSEN DD17-725		Wattenberg		Oct/08/2022		Chevron			
Date	Time 24-hr clock	Treating Pressure PSI	Flow Rate B/M	Density LB/G	Volume BBL	Message			
10/08/2022	21:07:40	2540	0.0	8.18	310.2	Casing Test 2500			
10/08/2022	21:07:53	2535	0.0	8.18	310.2				
10/08/2022	21:11:13	2531	0.0	8.18	310.2				
10/08/2022	21:16:13	2526	0.0	8.17	310.2				
10/08/2022	21:21:13	2521	0.0	8.17	310.2				
10/08/2022	21:26:13	2517	0.0	8.17	310.2				
10/08/2022	21:29:33	2512	0.0	8.17	310.2				
10/08/2022	21:32:53	2508	0.0	8.17	310.2				
10/08/2022	21:34:33	2503	0.0	8.17	310.2				
10/08/2022	21:37:53	2498	0.0	8.17	310.2				
10/08/2022	21:39:33	17	0.0	8.17	310.2				
10/08/2022	21:41:13	-1	0.0	8.17	310.2				
10/08/2022	21:42:53	-10	0.0	8.17	310.2				
10/08/2022	21:44:33	22	0.0	8.16	310.2				
10/08/2022	21:46:13	8	0.0	8.01	310.2				
10/08/2022	21:47:53	31	0.0	8.17	310.2				
10/08/2022	21:49:33	-15	0.0	8.18	310.2				
10/08/2022	21:51:13	-15	0.0	8.18	313.8				

Post Job Summary

Average Pump Rates, bbl/min				Volume of Fluid Injected, bbl			
Slurry	N2	Mud	Maximum Rate	Total Slurry	Mud	Spacer	N2
3.7			7.0	313.8	0.0	310.2	
Treating Pressure Summary, psi				Breakdown Fluid			
Maximum	Final	Average	Bump Plug to	Breakdown	Type	Volume	Density
4087	-15	900				bbl	lb/gal
Avg. N2 Percent	Designed Slurry Volume	Displacement	Mix Water Temp	Cement Circulated to Surface?	<input checked="" type="checkbox"/>	Volume	20.0 bbl
%	0.0 bbl	0.0 bbl	degF	Washed Thru Perfs	<input type="checkbox"/>	To	ft
Customer or Authorized Representative		Schlumberger Supervisor			Circulation Lost	<input type="checkbox"/>	Job Completed
Ricky Walley		Justin Zika			-		-