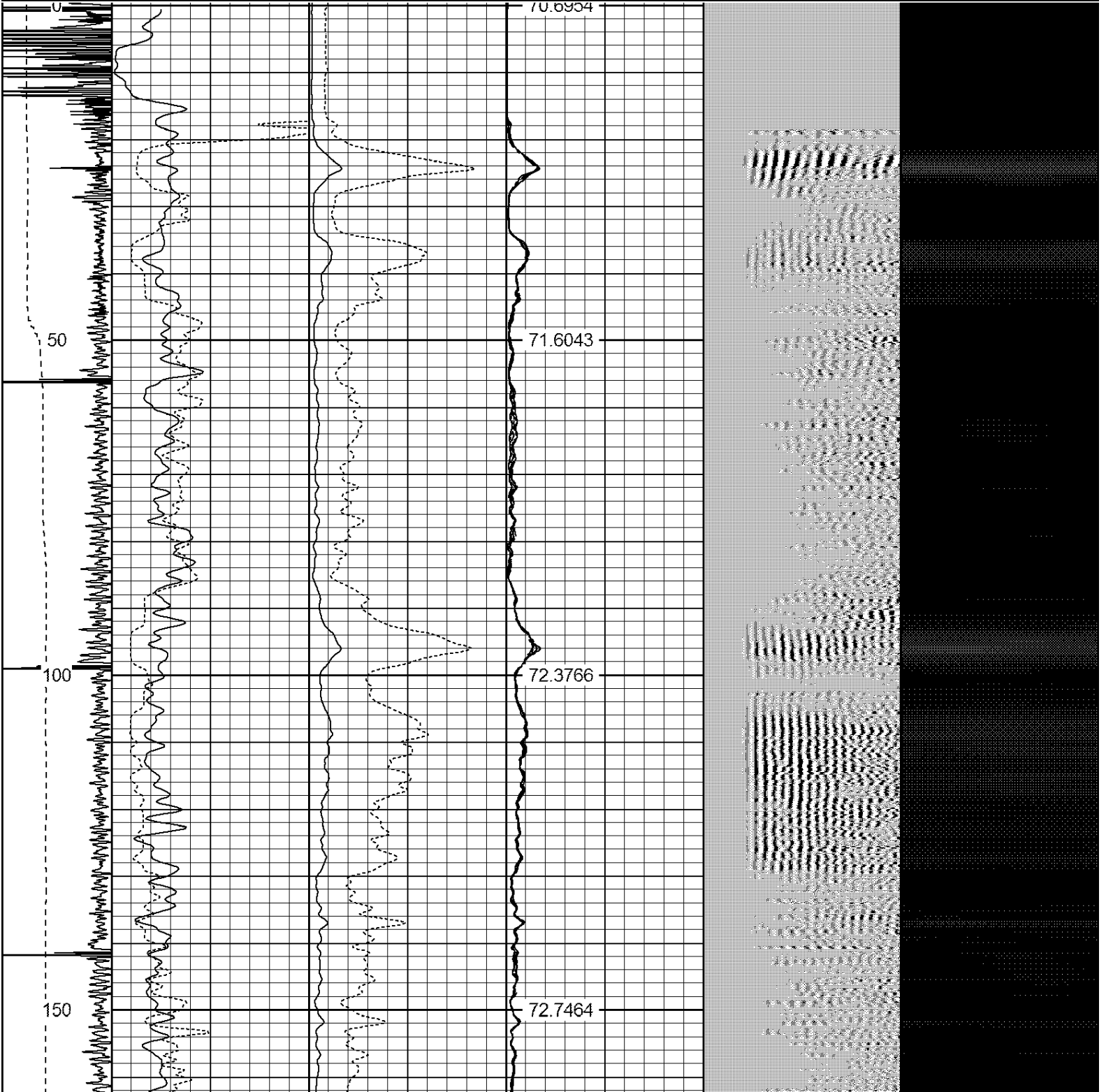


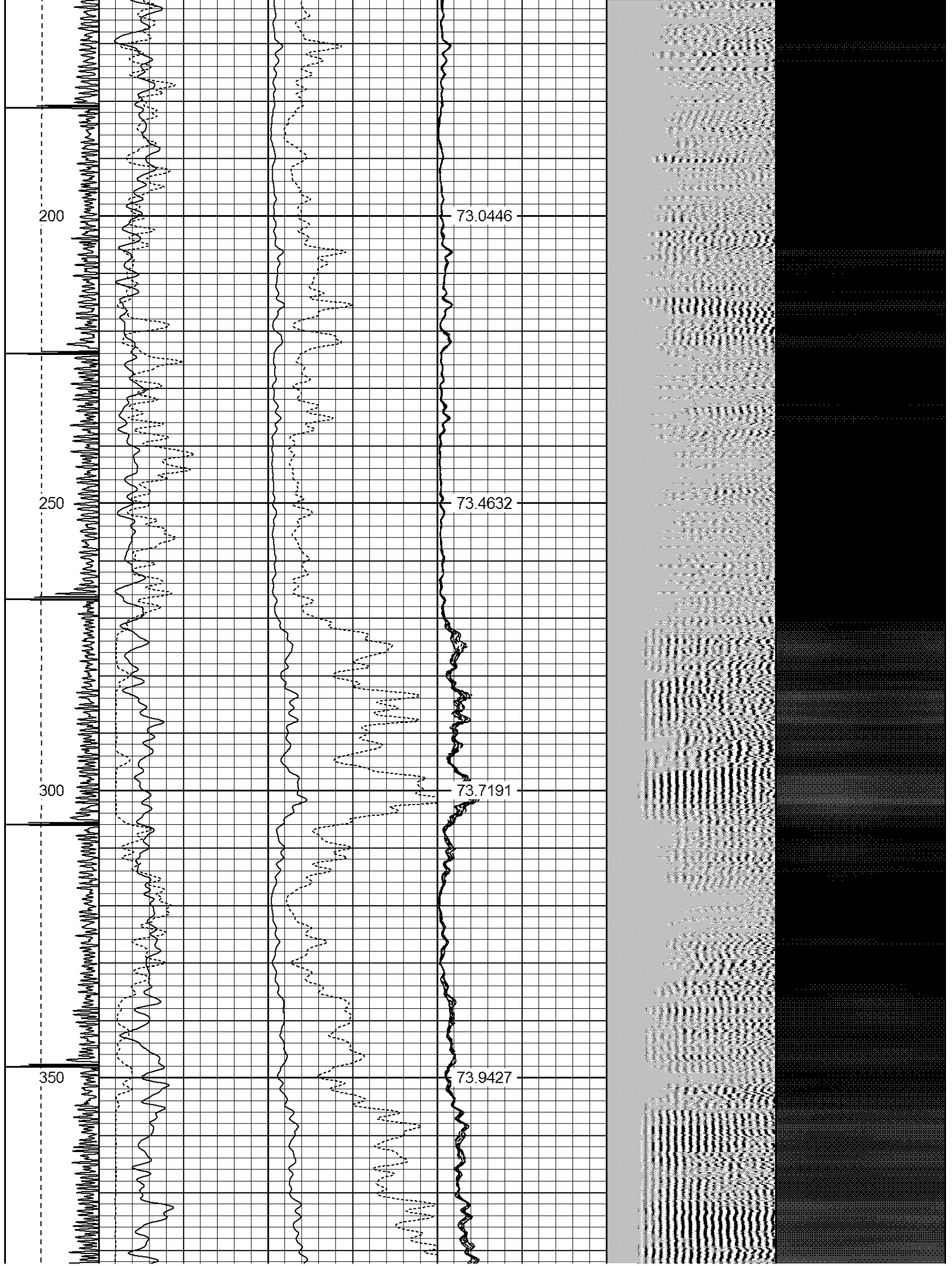
HEADVOL I	15.02					
IntTemp	13.60					
WVF3FT	10.35		RBT-Probe (Base) Probe Radii Bond Tool with Digital Telemetry	8.92	2.75	90.00
WVFCAL	10.35					
WVFS1	10.35					
WVFS2	10.35					
WVFS3	10.35					
WVFS4	10.35					
WVFS5	10.35					
WVFS6	10.35					
WVFS7	10.35					
WVFS8	10.35					
WVF5FT	9.35					
CNLSC	6.00					
CNSSC	5.17		CNT-Probe_B (275) 6 bow centralizer	1.77	2.75	40.00
CCL	3.64					
GR	0.90		GR-Probe (275) Probe 2.75"	4.33	2.75	30.00

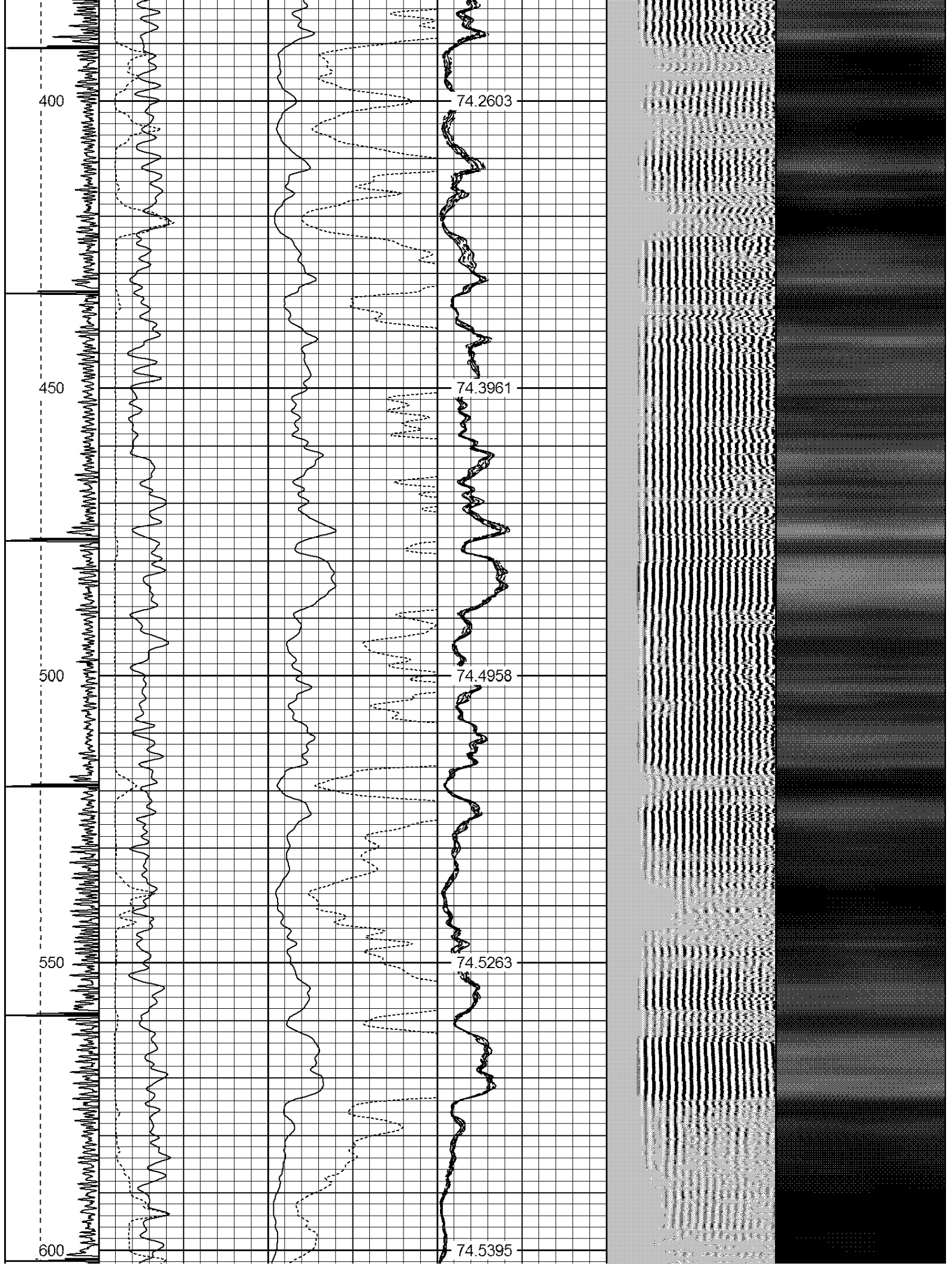
Dataset: dechant d 18-27d.db: field/well/run1/pass3
 Total Length: 16.02 ft
 Total Weight: 161.00 lb
 O.D.: 2.75 in

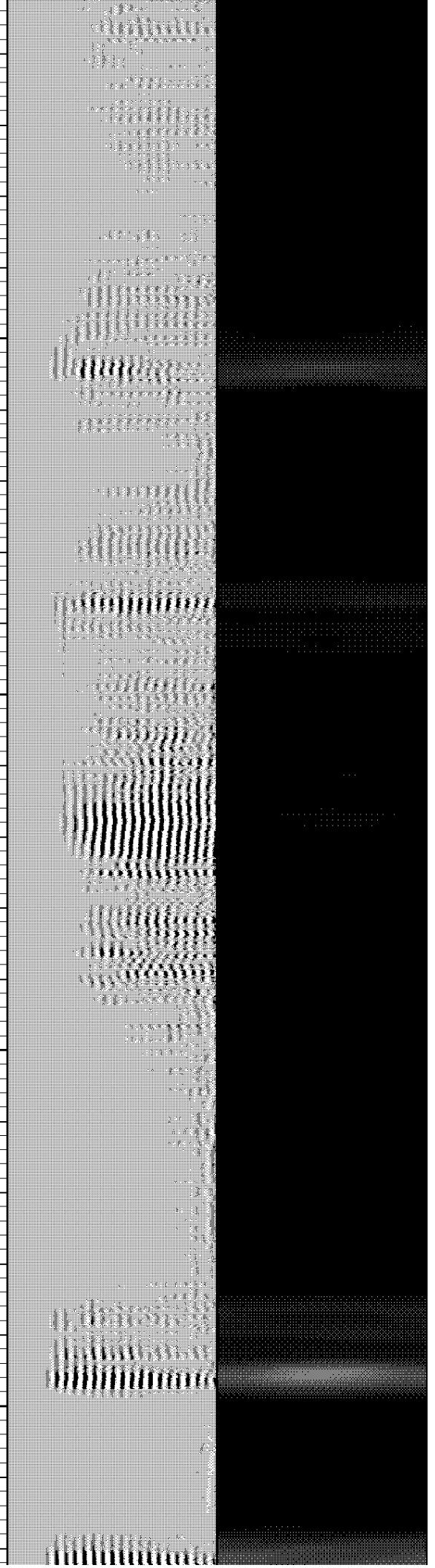
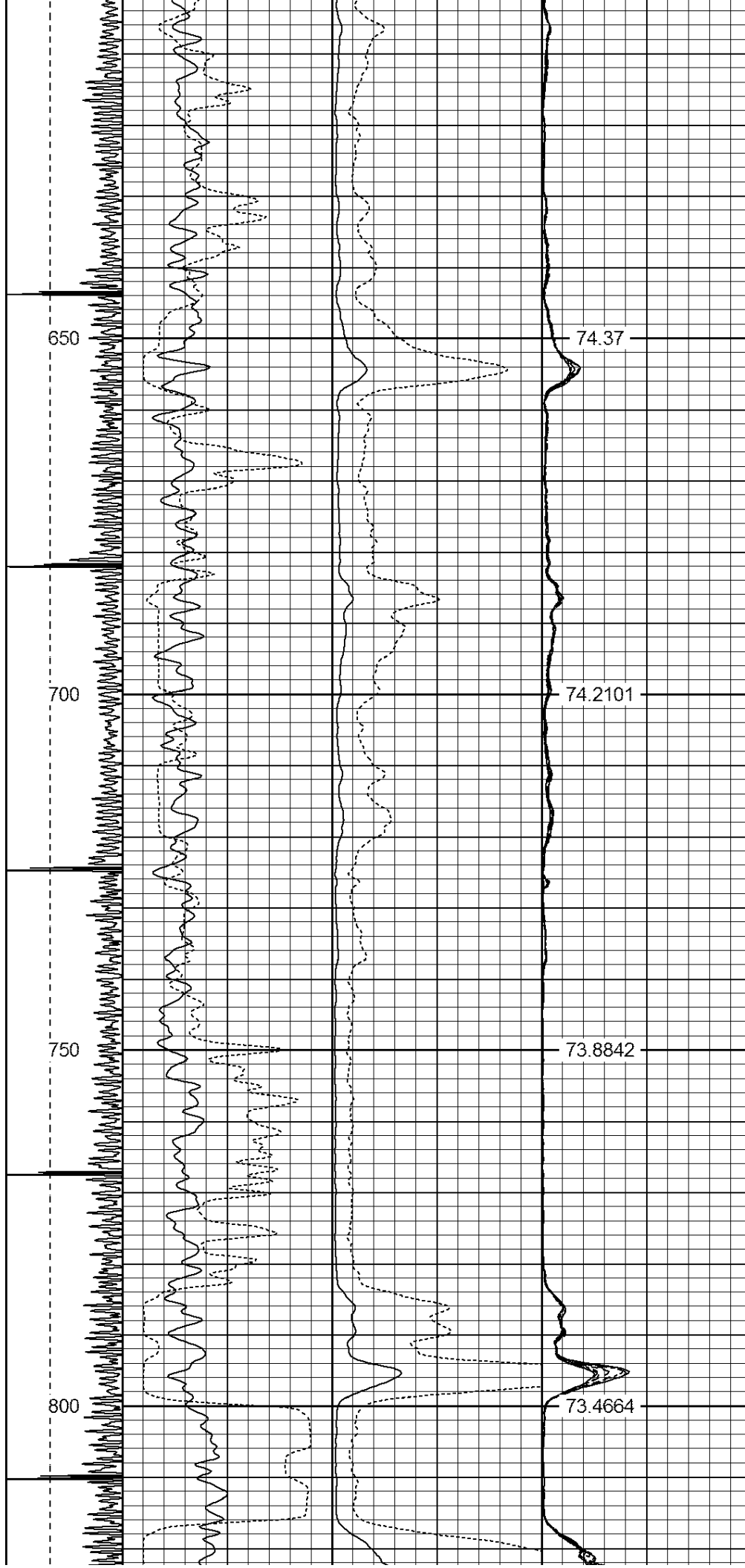
Database File: dechant d 18-27d.db
 Dataset Pathname: pass3
 Presentation Format: ips_rbt

-9	CCL	1	200	TT (usec)	800	0	AMP (mV)	100	0	AMPS1	100	200	VDL	1200	1	Cement Map	8
	LSPD		0	GR (GAPI)	200	0	AMPx5 (mV)	20	0	AMPS2	100				100		1
	(ft/min)		200	GR (GAPI)	400					0	AMPS3	100					
0		250								0	AMPS4	100					
										0	AMPS5	100					
										0	AMPS6	100					
										0	AMPS7	100					
										0	AMPS8	100					
											IntTemp						
											(degF)						











-9	CCL	1	200	TT (usec)	800	0	AMP (mV)	100	0	AMPS1	100	200	VDL	1200	1	Cement Map	8
	LSPD		0	GR (GAPI)	200	0	AMPx5 (mV)	20	0	AMPS2	100				100		1
	(ft/min)		200	GR (GAPI)	400					AMPS3	100						
0	250									AMPS4	100						
										AMPS5	100						
										AMPS6	100						
										AMPS7	100						
										AMPS8	100						
										IntTemp							
										(degF)							

Calibration Report

Database File: dechant d 18-27d.db
 Dataset Pathname: pass3
 Date: 2008-09-11 14:53:00
 Log File: C:\111110

Gamma Ray Calibration Report

Serial Number: 275
 Tool Model: Probe
 Performed: Wed Nov 06 11:09:15 2013

Calibrator Value: 100.0 GAPI

Background Reading: 35.0 cps
 Calibrator Reading: 160.0 cps

Sensitivity: 0.9000 GAPI/cps

Compensated Neutron Calibration Report

Serial Number: 275
 Tool Model: Probe_B

CALIBRATION Wed Jul 30 08:47:19 2008

Detector	Readings	Target	Normalization
Short Space	5001.20 cps	0.00 cps	1.0000
Long Space	1029.31 cps	0.00 cps	1.0000

PRE-SURVEY VERIFICATION

	Detector	Readings	Measured	Target
1)	Short Space	cps		
	Long Space	cps	pu	pu
2)	Short Space	cps		
	Long Space	cps	pu	
3)	Short Space	cps		
	Long Space	cps	pu	

POST-SURVEY VERIFICATION

	Detector	Readings	Measured	Target
1)	Short Space	cps		
	Long Space	cps	pu	pu
2)	Short Space	cps		
	Long Space	cps	pu	pu
3)	Short Space	cps		
	Long Space	cps	pu	pu

Segmented Cement Bond Log Calibration Report

Serial Number: Base
 Tool Model: Probe

Calibration Casing Diameter: 4.500 in
 Calibration Depth: 0.000 ft

Master Calibration, performed Thu Oct 06 07:51:49 2022:

	Raw (v)		Calibrated (mv)		Results	
	Zero	Cal	Zero	Cal	Gain	Offset
3'	0.000	1.182	1.500	81.196	67.413	1.498
CAL	0.000	1.222				

5'	0.000	1.246	1.500	81.196	63.949	1.492
SUM						
S1	0.000	1.198	0.500	81.196	67.385	0.492
S2	0.000	1.202	0.500	81.196	67.137	0.486
S3	0.000	1.197	0.500	81.196	67.426	0.498
S4	-0.000	1.187	0.500	81.196	67.962	0.501
S5	0.000	1.181	0.500	81.196	68.353	0.498
S6	-0.000	1.176	0.500	81.196	68.585	0.518
S7	0.000	1.184	0.500	81.196	68.174	0.493
S8	-0.000	1.194	0.500	81.196	67.583	0.505

Internal Reference Calibration, performed Tue Jun 05 07:53:42 2012:

	Raw (v)		Calibrated (v)		Results	
	Zero	Cal	Zero	Cal	Gain	Offset
CAL	0.000	0.000	0.000	1.222	1.000	0.000

Air Zero Calibration, performed Thu Oct 06 07:49:29 2022:

	Raw (v)		Calibrated (v)		Results	
	Zero		Zero		Offset	
3'	0.000		0.000		0.000	
5'	0.000		0.000		0.000	
SUM						
S1	0.000		0.000		0.000	
S2	0.000		0.000		0.000	
S3	0.000		0.000		0.000	
S4	0.000		0.000		0.000	
S5	0.000		0.000		0.000	
S6	0.000		0.000		0.000	
S7	0.000		0.000		0.000	
S8	0.000		0.000		0.000	

Company	CHEVRON
Well	DECHANT D 18-27D
Field	WATTENBERG
County	WELD
State	CO



**RADIAL BOND TOOL
GAMMA RAY
CCL**

Company CHEVRON
Well DECHANT D 18-27D
Field WATTENBERG
County WELD State CO

Location: API # : 05-123-33991
LAT 40.234170 LONG 104.596050 SE/SW
SEC 7 TWP 3N RGE 64W
Permanent Datum GL Elevation 4825'
Log Measured From KB 15' K.B. 4840'
Drilling Measured From KB D.F. 4839'
G.L. 4825'

Date	OCTOBER 6, 2022
Run Number	ONE
Depth Driller	7676'
Depth Logger	975'
Bottom Logged Interval	971'
Top Log Interval	SURFACE
Open Hole Size	7.875"
Type Fluid	WATER
Density / Viscosity	N/A
Max. Recorded Temp.	74 F
Estimated Cement Top	N/A
Time Well Ready	ON ARRIVAL
Time Logger on Bottom	N/A
Equipment Number	3814
Location	GREELEY
Recorded By	MICHAEL RAMSEY
Witnessed By	SILVERIO

Borehole Record		Tubing Record					
Run Number	Bit	From	To	Size	Weight	From	To


Casing Record	Size	Wgt/Ft	Top	Bottom
Surface String	8.625"	24#	SURFACE	789'
Prot. String				
Production String	4.5"	11.6#	SURFACE	7666'
Liner				

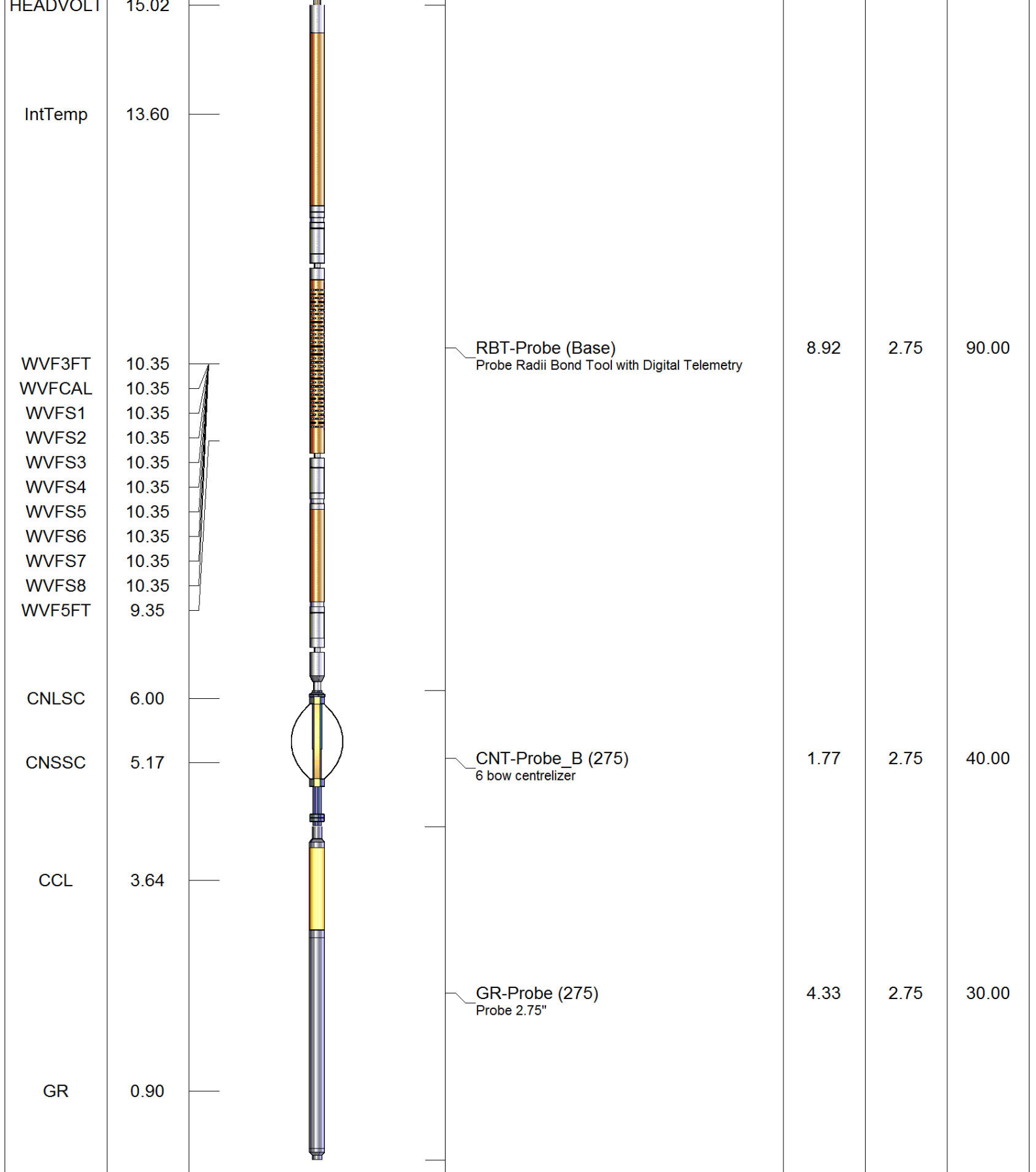
<<< Fold Here >>>

All interpretations are opinions based on inferences from electrical or other measurements and we cannot and do not guarantee the accuracy or correctness of any interpretation, and we shall not, except in the case of gross or willful negligence on our part, be liable or responsible for any loss, costs, damages, or expenses incurred or sustained by anyone resulting from any interpretation made by any of our officers, agents or employees. These interpretations are also subject to our general terms and conditions set out in our current Price Schedule.

Comments

**RAN RBL TO VERIFY CEMENT BOND
WELL LOADED UPON ARRIVAL
LOG NOT CORRELATED
UNABLE TO CALIBRATE DUE TO NO FREE PIPE
RAN PREVIOUS 4.5" 11.6# CALIBRATION**

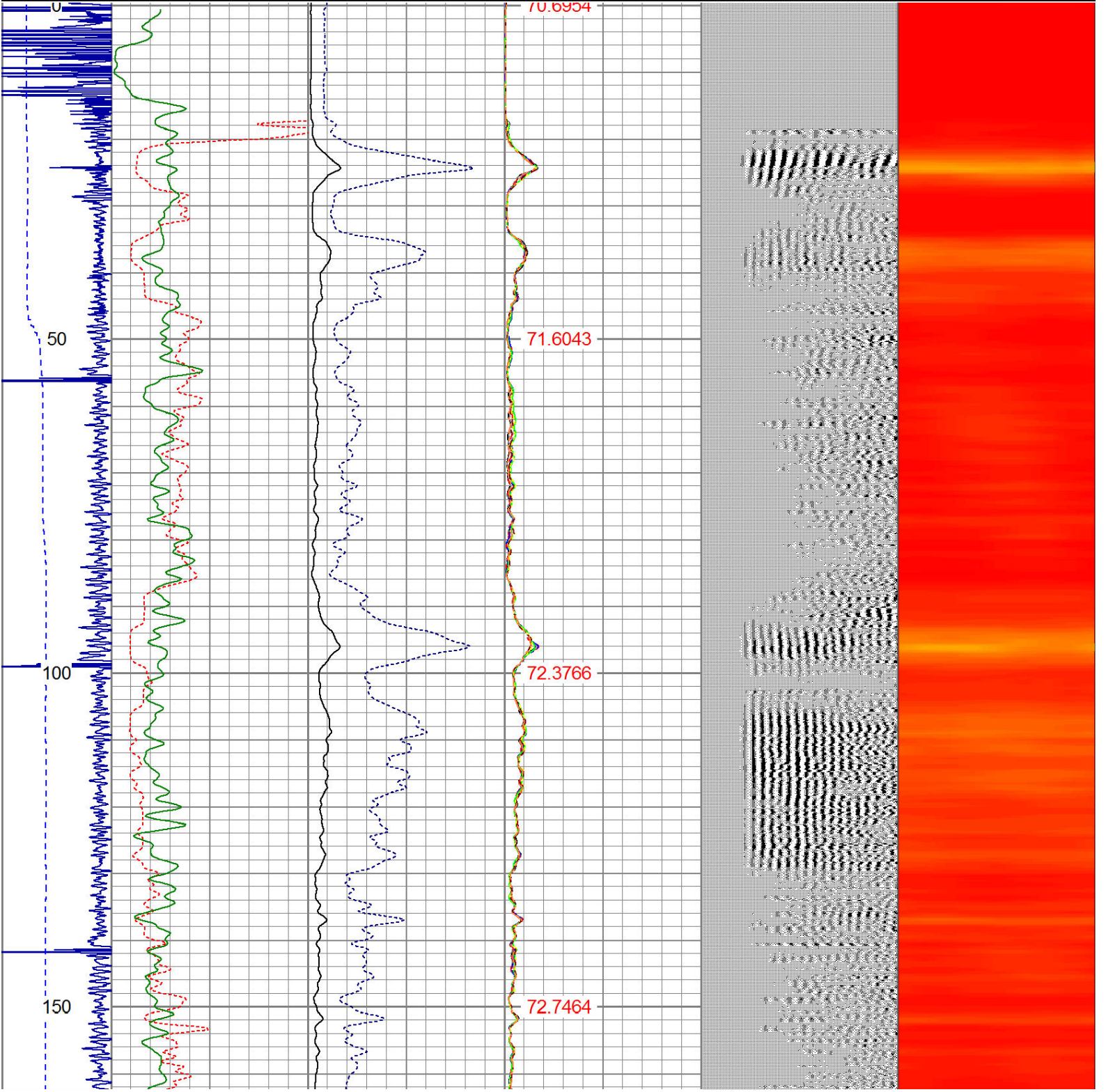
Sensor	Offset (ft)	Schematic	Description	Len (ft)	OD (in)	Wt (lb)
			CHD1_4	1.00	1.44	1.00

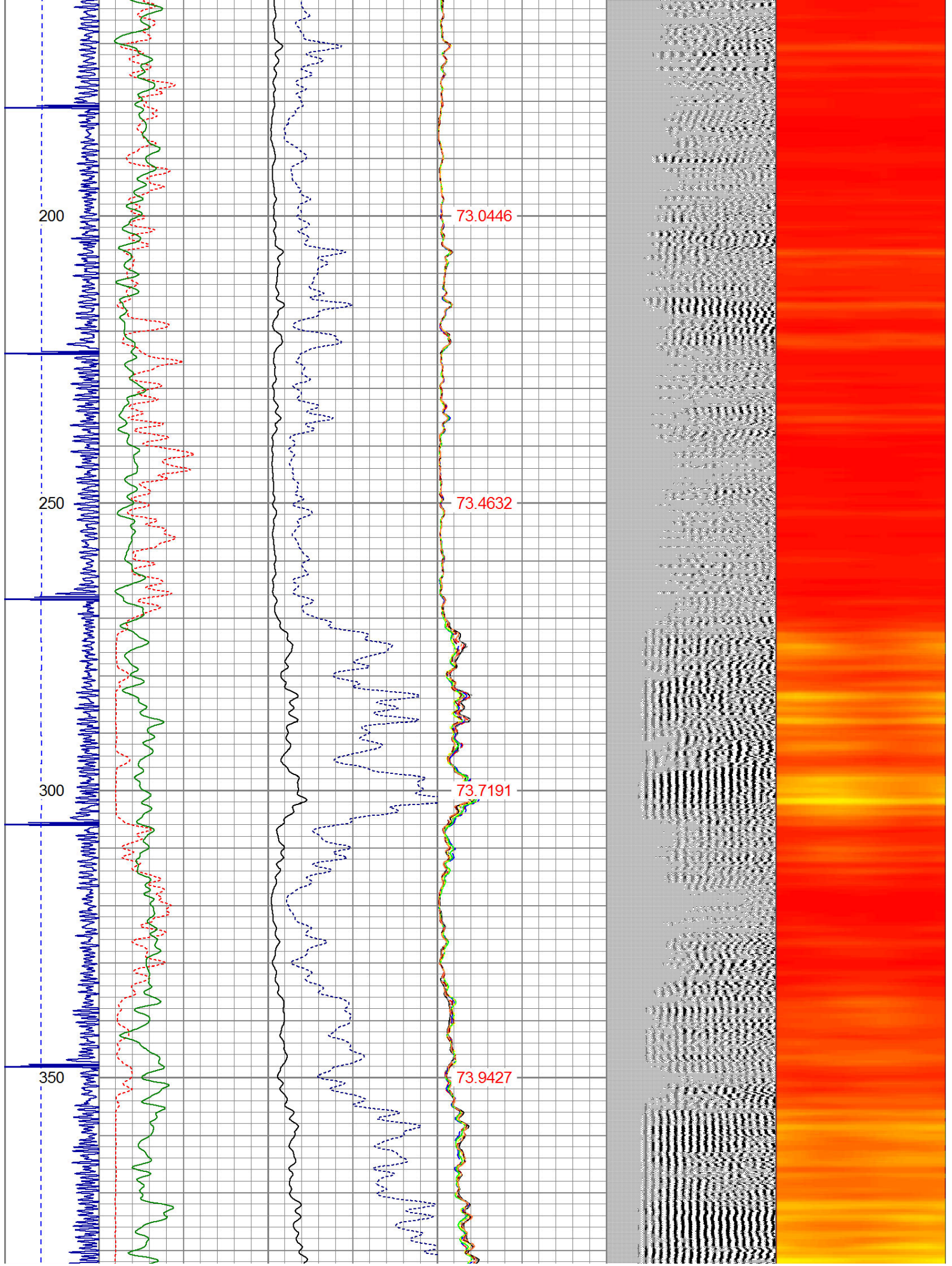


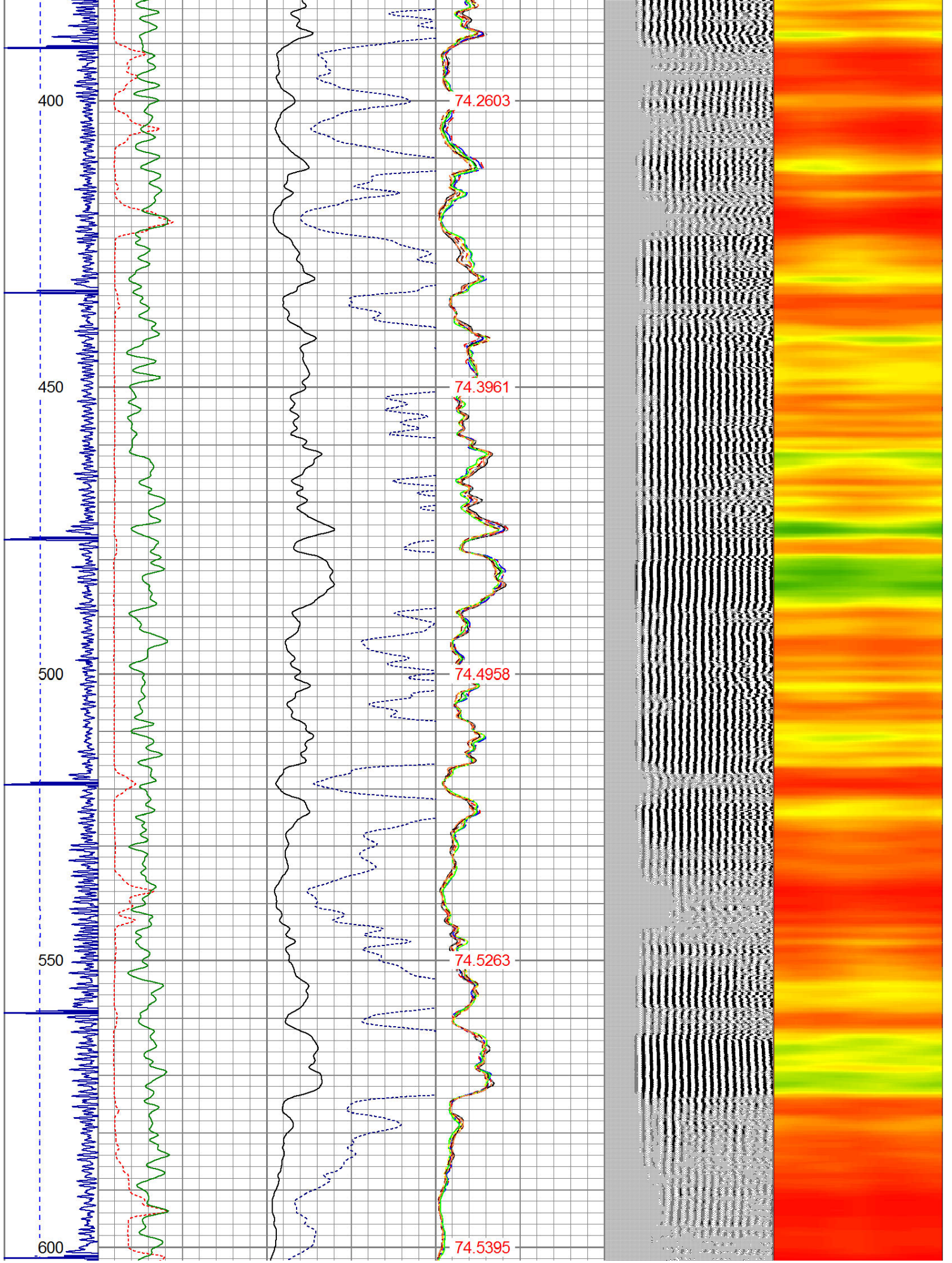
Dataset: dechant d 18-27d.db: field/well/run1/pass3
 Total Length: 16.02 ft
 Total Weight: 161.00 lb
 O.D.: 2.75 in

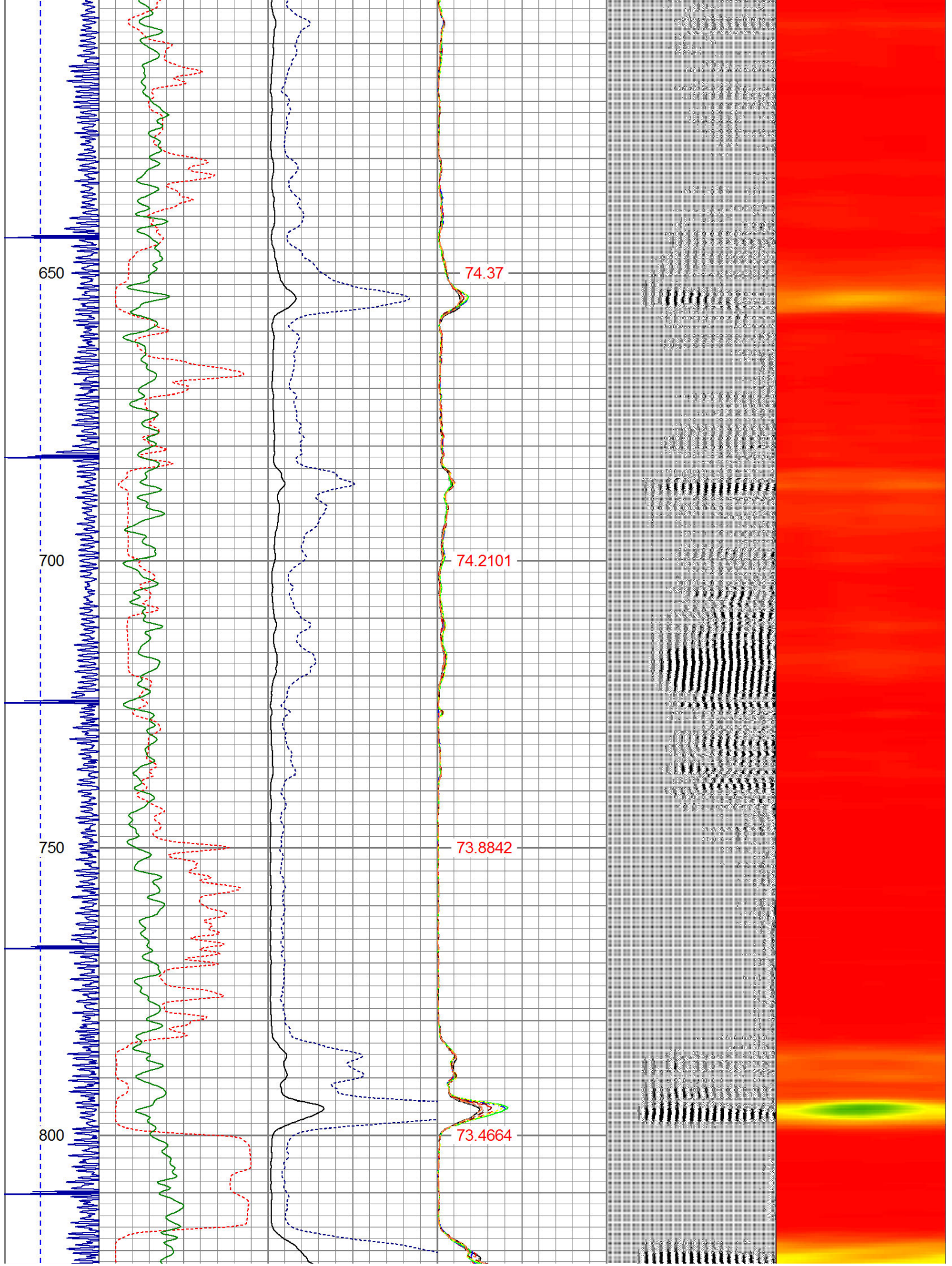
Database File: dechant d 18-27d.db
 Dataset Pathname: pass3
 Presentation Format: ips_rbt

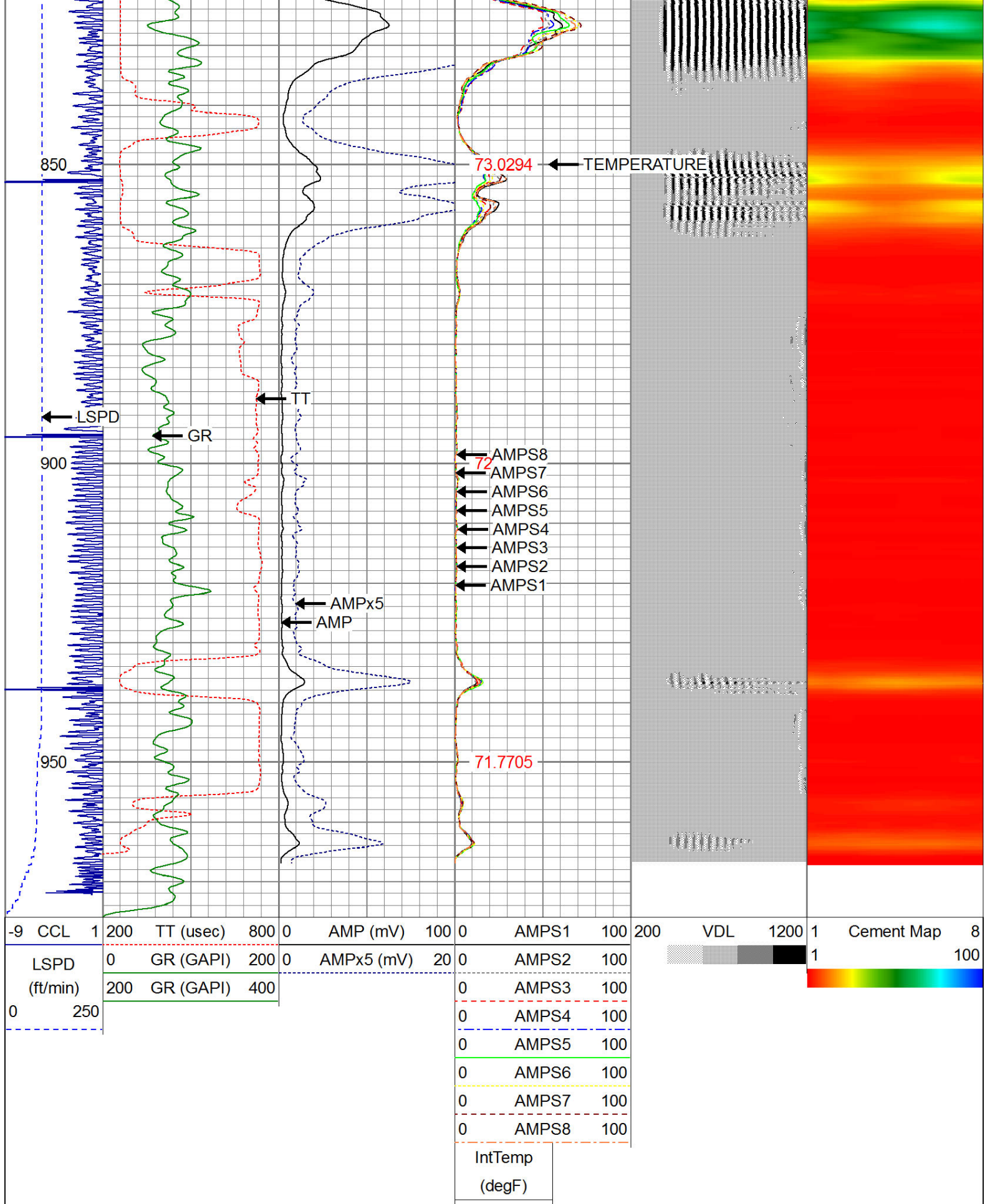
-9	CCL	1	200	TT (usec)	800	0	AMP (mV)	100	0	AMPS1	100	200	VDL	1200	1	Cement Map	8
LSPD			0	GR (GAPI)	200	0	AMPx5 (mV)	20	0	AMPS2	100				1		100
(ft/min)			200	GR (GAPI)	400				0	AMPS3	100						
0									0	AMPS4	100						
									0	AMPS5	100						
									0	AMPS6	100						
									0	AMPS7	100						
									0	AMPS8	100						
										IntTemp							
										(degF)							











Calibration Report

Database File: dechant d 18-27d.db

Dataset Pathname: pass3

Dataset Creation: Thu Oct 22 09:44:53 2009 by User: GCH 111110

Gamma Ray Calibration Report

Serial Number: 275
 Tool Model: Probe
 Performed: Wed Nov 06 11:09:15 2013

Calibrator Value: 100.0 GAPI

Background Reading: 35.0 cps
 Calibrator Reading: 160.0 cps

Sensitivity: 0.9000 GAPI/cps

Compensated Neutron Calibration Report

Serial Number: 275
 Tool Model: Probe_B

CALIBRATION Wed Jul 30 08:47:19 2008

Detector	Readings	Target	Normalization
Short Space	5001.20 cps	0.00 cps	1.0000
Long Space	1029.31 cps	0.00 cps	1.0000

PRE-SURVEY VERIFICATION

	Detector	Readings	Measured	Target
1)	Short Space	cps		
	Long Space	cps	pu	pu
2)	Short Space	cps		
	Long Space	cps	pu	
3)	Short Space	cps		
	Long Space	cps	pu	

POST-SURVEY VERIFICATION

	Detector	Readings	Measured	Target
1)	Short Space	cps		
	Long Space	cps	pu	pu
2)	Short Space	cps		
	Long Space	cps	pu	pu
3)	Short Space	cps		
	Long Space	cps	pu	pu

Segmented Cement Bond Log Calibration Report

Serial Number: Base
 Tool Model: Probe

Calibration Casing Diameter: 4.500 in
 Calibration Depth: 0.000 ft

Master Calibration, performed Thu Oct 06 07:51:49 2022:

	Raw (v)		Calibrated (mv)		Results	
	Zero	Cal	Zero	Cal	Gain	Offset
3'	0.000	1.182	1.500	81.196	67.413	1.498
CAL	0.000	1.222				

5'	0.000	1.246	1.500	81.196	63.949	1.492
SUM						
S1	0.000	1.198	0.500	81.196	67.385	0.492
S2	0.000	1.202	0.500	81.196	67.137	0.486
S3	0.000	1.197	0.500	81.196	67.426	0.498
S4	-0.000	1.187	0.500	81.196	67.962	0.501
S5	0.000	1.181	0.500	81.196	68.353	0.498
S6	-0.000	1.176	0.500	81.196	68.585	0.518
S7	0.000	1.184	0.500	81.196	68.174	0.493
S8	-0.000	1.194	0.500	81.196	67.583	0.505

Internal Reference Calibration, performed Tue Jun 05 07:53:42 2012:

	Raw (v)		Calibrated (v)		Results	
	Zero	Cal	Zero	Cal	Gain	Offset
CAL	0.000	0.000	0.000	1.222	1.000	0.000

Air Zero Calibration, performed Thu Oct 06 07:49:29 2022:

	Raw (v)		Calibrated (v)		Results	
	Zero		Zero		Offset	
3'	0.000		0.000		0.000	
5'	0.000		0.000		0.000	
SUM						
S1	0.000		0.000		0.000	
S2	0.000		0.000		0.000	
S3	0.000		0.000		0.000	
S4	0.000		0.000		0.000	
S5	0.000		0.000		0.000	
S6	0.000		0.000		0.000	
S7	0.000		0.000		0.000	
S8	0.000		0.000		0.000	

Company	CHEVRON
Well	DECHANT D 18-27D
Field	WATTENBERG
County	WELD
State	CO