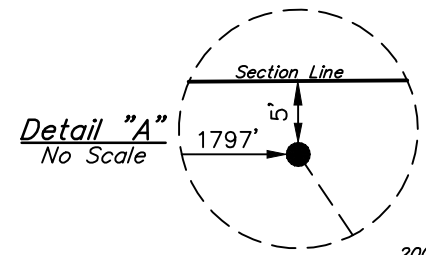


T6N, R67W, 6th P.M.

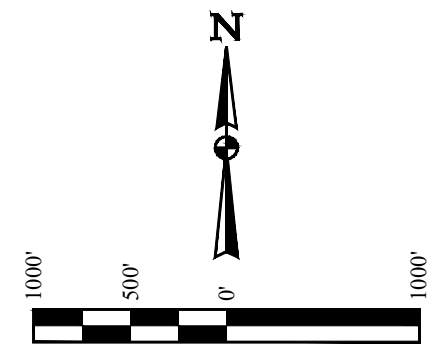
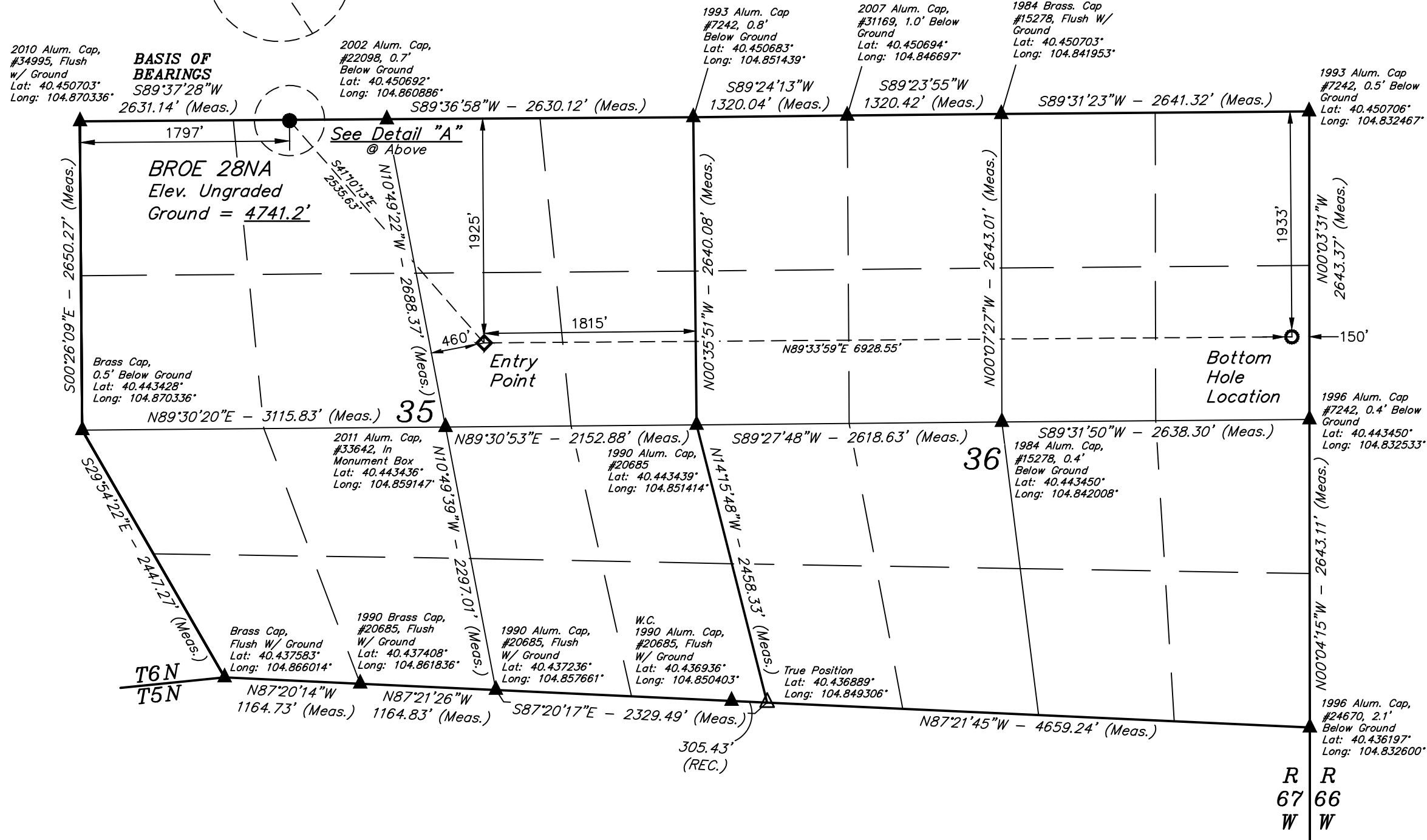
PDC ENERGY INC.

BROE 28NA
NE 1/4 NW 1/4, SECTION 35, T6N, R67W, 6th P.M.
WELD COUNTY, COLORADO



BASIS OF ELEVATION

USGS COOPERATIVE BASE NETWORK CONTROL STATION,
DESIGNATION 'VERMILYEA'. NGS DATA SHEET LISTS THE
NAVD 88 ELEVATION AS BEING 5026 FEET



NOTE:
Distances referenced on plat to section lines are perpendicular.

- LEGEND:**
- = PROPOSED WELLHEAD.
 - = BOTTOM HOLE LOCATION.
 - ◇ = ENTRY POINT.
 - ▲ = SECTION CORNERS LOCATED. (NAD 83)
 - △ = SECTION CORNERS RE-ESTABLISHED. (Not Set on Ground.) (NAD 83)

CERTIFICATE OF ACCURACY
THIS IS TO CERTIFY THAT THE ABOVE PLAT WAS PREPARED FROM FIELD NOTES OF ACTUAL SURVEYS MADE BY ME OR UNDER MY SUPERVISION AND THAT THE SAME ARE TRUE AND CORRECT TO THE BEST OF MY KNOWLEDGE AND BELIEF.

Greg Weimer
REGISTERED LAND SURVEYOR
REGISTRATION NO. 28285
STATE OF COLORADO
EXPIRES 08-31-22

REV: 42 07-11-22 M.D. (COMPANY & WELL NAME CHANGE, EP, BHL MOVE & REMOVE BP)

PDOP = 1.3

NAD 83 (SURFACE LOCATION)	NAD 83 (ENTRY POINT)	NAD 83 (BOTTOM HOLE LOCATION)
LATITUDE = 40°27'02.46" (40.450682)	LATITUDE = 40°26'43.47" (40.445409)	LATITUDE = 40°26'43.44" (40.445401)
LONGITUDE = 104°51'49.97" (104.863881)	LONGITUDE = 104°51'28.58" (104.857939)	LONGITUDE = 104°49'58.99" (104.833054)

UINTAH
ENGINEERING & LAND SURVEYING

WELLS, LLC
Corporate Office * 85 South 200 East
Vernal, UT 84078 * (435) 789-1017

SURVEYED BY	GREG WEIMER, O.R.	08-31-20	SCALE
DRAWN BY	D.COX	01-26-17	1" = 1000'

WELL LOCATION PLAT