



October 6, 2022

Noble Energy, Inc.  
2001 16<sup>th</sup> Street, Suite 900  
Denver, CO 80202

Re: **Stimulation Setback Consent, Rule 408.u.**  
Broe 24C, 25NA  
NENW Section 35, T6N-R67W  
Weld County, Colorado

To Whom It May Concern,

PDC Energy, Inc. ("PDC") hereby requests a Fracture Stimulation Setback waiver from Noble Energy, the offset operator of the following wells that are estimated to be closer than 150' to the PDC proposed well.

PDC Proposed Well	Noble Encroached Upon Well		3D Interwell Distance
Broe 24C	State 8-36	05-123-11981	51'
Broe 25NA	State 8-36	05-123-11981	150'

*Per COGCC Rule 408.u., No portion of a proposed wellbore's treated interval shall be located within 150 feet of an existing (producing, shut-in, or temporarily abandoned) or permitted oil and gas wellbore's treated interval belonging to another operator without the signed written consent of the operator of the encroached upon wellbore. The signed written consent shall be attached to the Application for Permit-to- Drill, Form 2 for the proposed wellbore.*

If Noble Energy, Inc. is in agreement to waive the Rule 408.u. requirement, please sign the waiver in the space provided below.

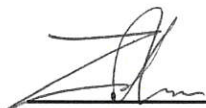
Sincerely,

Ally Ota  
Regulatory Analyst  
PDC Energy, Inc.



As the offset operator or a designated representative thereof, I understand that the PDC proposed well will be potentially drilled and stimulated within 150' of the offset well listed above. I hereby give my consent to the location of the PDC proposed well.

**OPERATOR: NOBLE ENERGY, INC.**

  
\_\_\_\_\_  
Signature

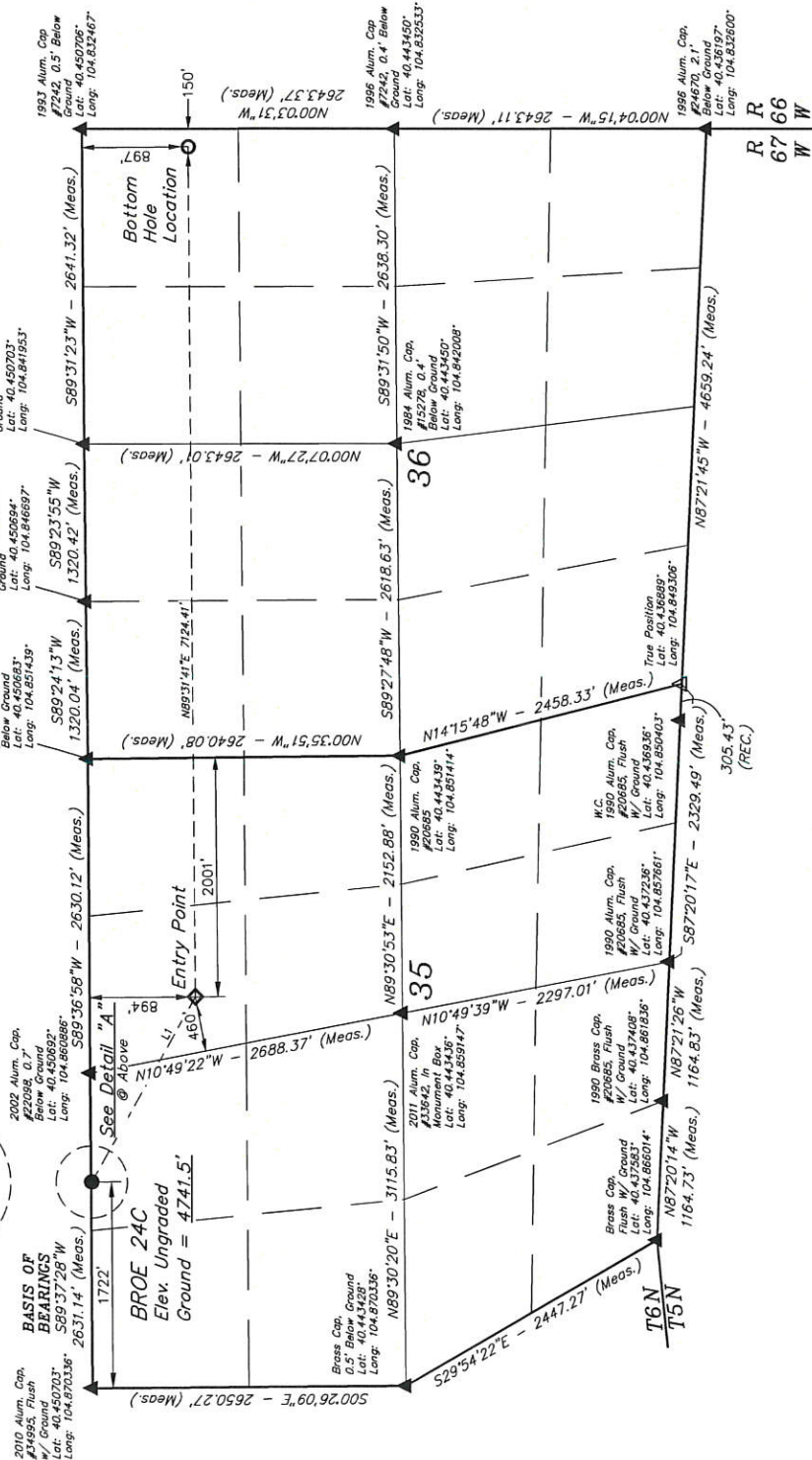
10-18-2022  
\_\_\_\_\_  
Date

Zach Shearon, Attorney-in-Fact  
\_\_\_\_\_  
Name, Title

**BROE 24C**  
NE 1/4 NW 1/4, SECTION 35, T6N, R67W, 6th P.M.  
WELD COUNTY, COLORADO

USGS COOPERATIVE BASE NETWORK CONTROL STATION,  
DESIGNATION 'VERMILYEA', NGS DATA SHEET LISTS THE  
NAVD 88 ELEVATION AS BEING 5026 FEET

LINE TABLE		
LINE	DIRECTION	LENGTH
L1	S60°24'58"E	1779.29'



Distances referenced on plat to section lines are perpendicular.

- = PROPOSED WELLHEAD.
- = BOTTOM HOLE LOCATION.
- ▲ = ENTRY POINT.
- = SECTION CORNERS LOCATED. (NAD 83)
- ▼ = SECTION CORNERS RE-ESTABLISHED.  
(Not Set on Ground.) (NAD 83)

REV: 42 07-11-22 M.D. (COMPANY & WELL NAME  
CHANGE EP BHL MOVE & REMOVE BP)

**UELS, LLC**  
Corporate Office \* 85 South  
Vernal, UT 84078 \* (435)

NAD 83 (SURFACE LOCATION)		NAD 83 (ENTRY POINT)		NAD 83 (BOTTOM HOLE LOCATION)	
LATITUDE = 40°27'02.46" (40.451682)		LATITUDE = 40°26'53.66" (40.448239)		LATITUDE = 40°26'53.68" (40.448244)	
LONGITUDE = 104°51'50.94" (104.864511)		LONGITUDE = 104°51'31.02" (104.858618)		LONGITUDE = 104°49'58.90" (104.833028)	

SURVEYED BY	GREG WEIMER, O.R.	08-31-20	SCALE
DRAWN BY	D. COX	01-26-17	1" = 1000'

## WELL LOCATION PLAT

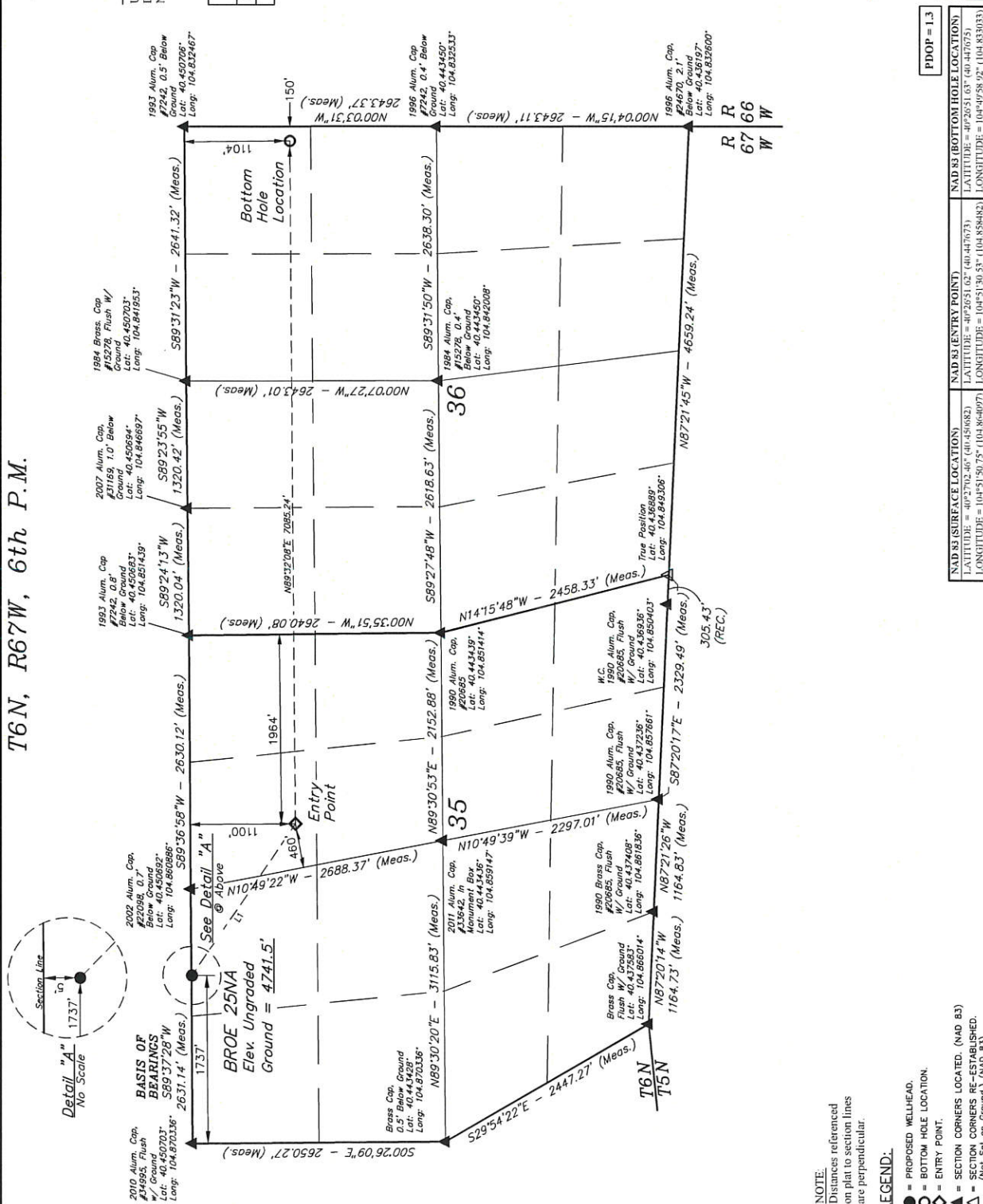
**PDC ENERGY INC.**

**BROE 25NA**  
**NE 1/4 NW 1/4, SECTION 35, T6N, R67W, 6th P.M.**  
**WELD COUNTY, COLORADO**

## BASIS OF ELEVATION

USGS COOPERATIVE BASE NETWORK CONTROL STATION,  
DESIGNATION 'VERMILYEA'. NGS DATA SHEET LISTS THE  
NAVD 88 ELEVATION AS BEING 5026 FEET

LINE TABLE		
LINE	DIRECTION	LENGTH
L1	S55°23'39"E	1909.54'



**NOTE:**  
Distances referenced  
on plat to section lines  
are perpendicular

LEGEND:

- = PROPOSED WELLHEAD.
- = BOTTOM HOLE LOCATION.
- ◇ = ENTRY POINT.
- ▲ = SECTION CORNERS LOCATED. (NAD 83)
- △ = SECTION CORNERS RE-ESTABLISHED.  
(Not Set on Ground.) (NAD 83)

**PDOP = 1.3**

NAD 83 (SURFACE LOCATION)	NAD 83 (ENTRY POINT)	NAD 83 (BOTTOM HOLE LOCATION)
<p>                     LATITUDE = 40°27'02.46" (40.4516682)                      LONGITUDE = 104°51'50.75" (104.8640977)                 </p>	<p>                     LATITUDE = 40°26'51.62" (40.447673)                      LONGITUDE = 104°51'30.53" (104.858482)                 </p>	<p>                     LATITUDE = 40°26'51.63" (40.447675)                      LONGITUDE = 104°49'58.92" (104.833033)                 </p>



**UELS, LLC**  
Corporate Office \* 85 South  
Vernal, UT 84078 \* (435) 7

REV: 42 07-11-22 M.D. (COMPANY & WELL NAME  
CHANGE, EP, BHL MOVE & REMOVE BP)

CERTIFICATE

THIS IS TO CERTIFY THAT THE ABOVE ACTUALLY APPEARED AND GAVE NOTES OF ACTUAL SURVEYS MADE BY ME OR MY SPECIAL AGENT AND THAT THE SAME ARE TRUE AND CORRECT TO THE BEST OF MY KNOWLEDGE AND BELIEF

REGISTERED LAND SURVEYOR  
RECEIVED JAN 22 2023  
STATE OF TEXAS

1522