

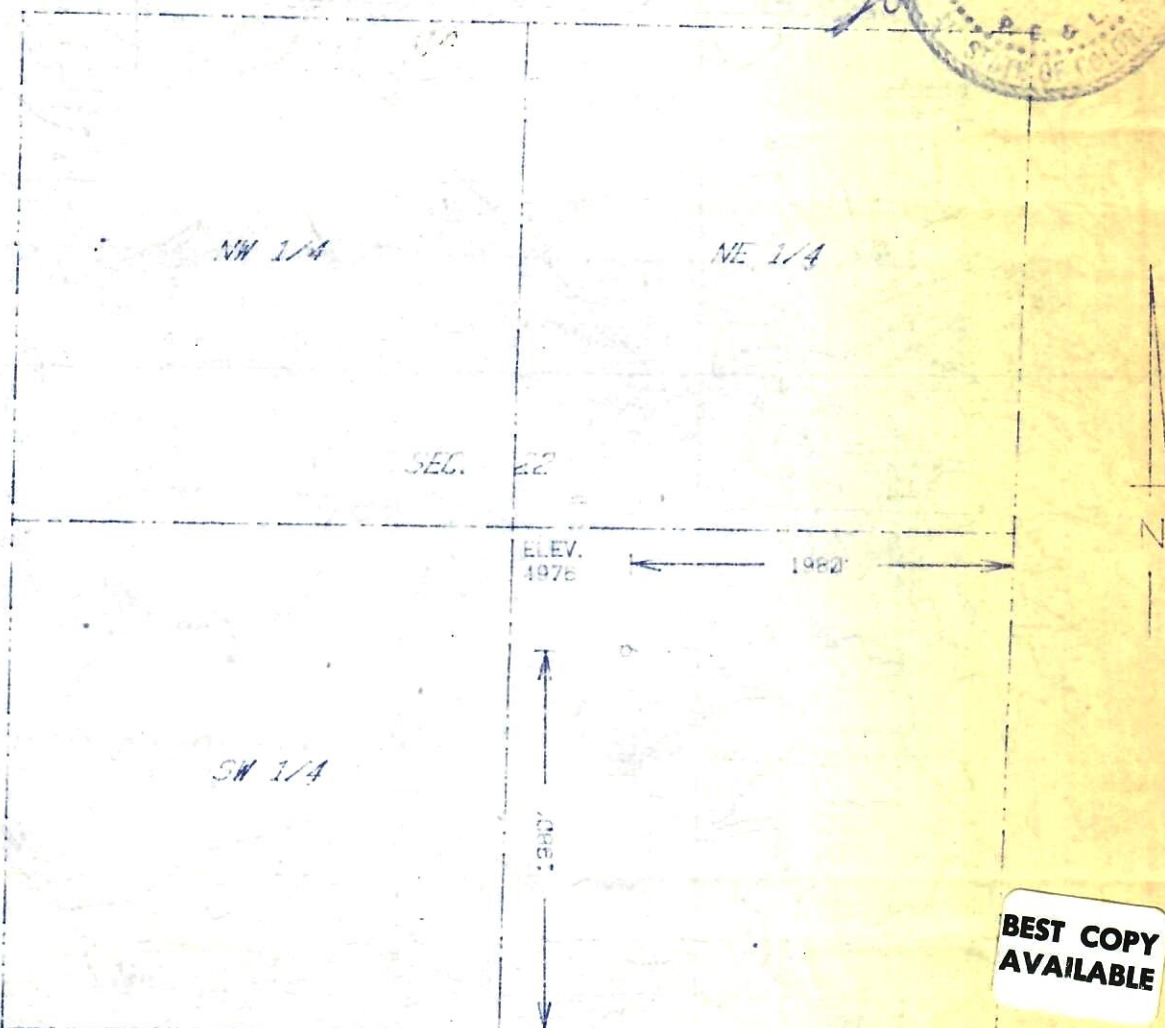


RECEIVED

OCT 3 1983

The accompanying plat is an accurate representation showing the location of a proposed well. This location may be described as a point 1980 feet north of the south line, and 1980 feet west of the east line of Section 22; Township 3 S Range 56 W of the 6th P.M., ADAMS County, COLORADO. The surface elevation at this point is 4976 feet m.s.l.

COLO. OIL & GAS CONS. COMM.



BEST COPY AVAILABLE

2 1/2 miles
South to US.
36 just EAST
of M.P. 121

SCALE - 1"=1000'

○ SURVEYED POINT
REFERENCE STAKE (200' S, 200' E)
SE 1/4 SEC. 22, T 3 S, R 56 W

**HARMON
ENGINEERING
SERVICES**

MADDERN #1

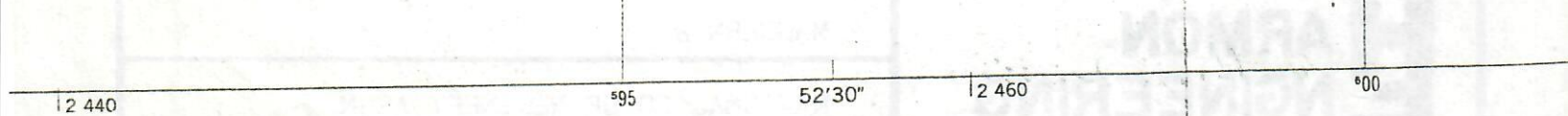
NATIONAL CO-OP REFINERY ASSN.

ADAMS CO., COLORADO

26 SEPT 1983

3259-102

14



Graphic scale bar showing distances in miles and feet. The top scale is in miles, with markings at 1, 2, 3, and 4. The bottom scale is in feet, with markings at 00, 9000, 12000, 15000, 18000, and 21000. The text 'SCALE 1:50,000' is visible at the top left of the page.