

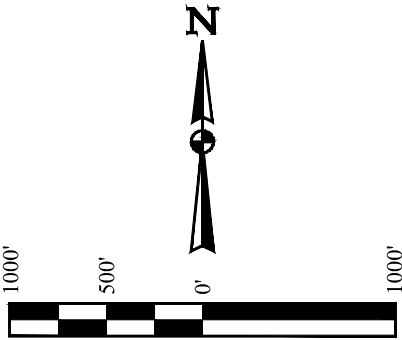
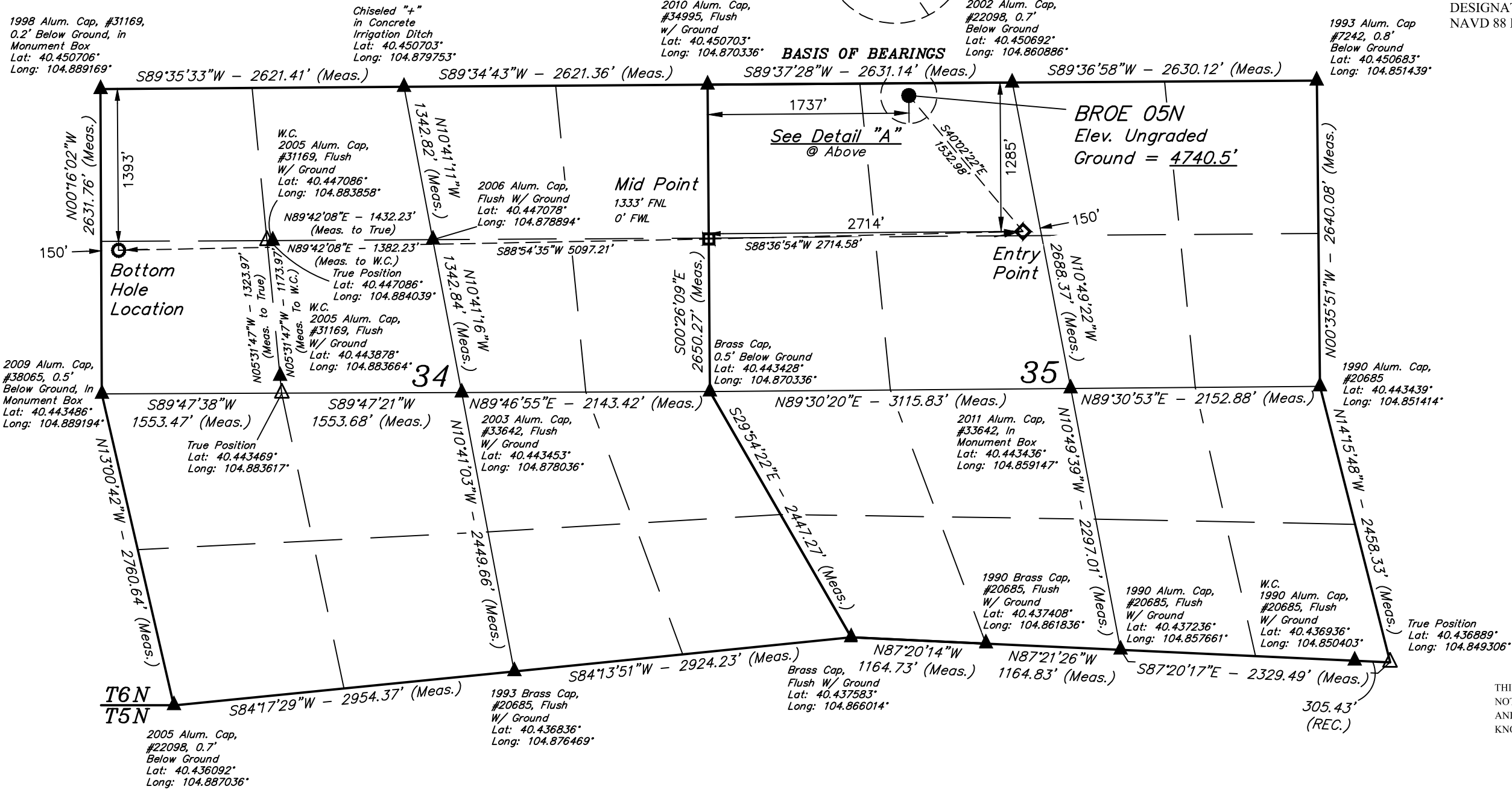
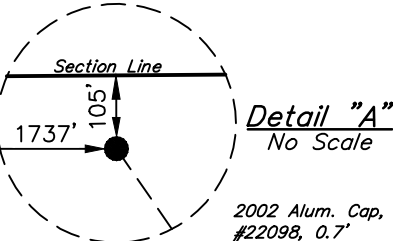
T6N, R67W, 6th P.M.

PDC ENERGY INC.

BROE 05N  
NE 1/4 NW 1/4, SECTION 35, T6N, R67W, 6th P.M.  
WELD COUNTY, COLORADO

BASIS OF ELEVATION

USGS COOPERATIVE BASE NETWORK CONTROL STATION,  
DESIGNATION 'VERMILYEA'. NGS DATA SHEET LISTS THE  
NAVD 88 ELEVATION AS BEING 5026 FEET



NOTE:  
Distances referenced  
on plat to section lines  
are perpendicular.

- LEGEND:
- = PROPOSED WELLHEAD.
  - = BOTTOM HOLE LOCATION.
  - ◆ = ENTRY POINT.
  - ▲ = SECTION CORNERS LOCATED. (NAD 83)
  - △ = SECTION CORNERS RE-ESTABLISHED.  
(Not Set on Ground.) (NAD 83)

CERTIFICATE OF RECORD  
THIS IS TO CERTIFY THAT THE ABOVE PLAT WAS PREPARED FROM THE  
NOTES OF ACTUAL SURVEYS MADE BY ME OR UNDER MY SUPERVISION  
AND THAT THE SAME ARE TRUE AND CORRECT TO THE BEST OF MY  
KNOWLEDGE AND BELIEF.

RECEIVED LAND SURVEYOR  
REGISTRATION NO. 28285  
STATE OF COLORADO 08-03-22

REV: 43 08-03-22 T.L.L. (EP & BHL MOVES)

PDOP = 1.8

NAD 83 (SURFACE LOCATION)	NAD 83 (ENTRY POINT)	NAD 83 (MID POINT)	NAD 83 (BOTTOM HOLE LOCATION)
LATITUDE = 40°27'01.47" (40.450408)	LATITUDE = 40°26'49.80" (40.447166)	LATITUDE = 40°26'49.36" (40.447044)	LATITUDE = 40°26'48.78" (40.446884)
LONGITUDE = 104°51'50.75" (104.864097)	LONGITUDE = 104°51'38.12" (104.860588)	LONGITUDE = 104°52'13.21" (104.870337)	LONGITUDE = 104°53'19.12" (104.888644)



UELS, LLC  
Corporate Office \* 85 South 200 East  
Vernal, UT 84078 \* (435) 789-1017

SURVEYED BY	GREG WEIMER, O.R.	08-31-20	SCALE
DRAWN BY	K.B.	03-08-16	1" = 1000'

WELL LOCATION PLAT