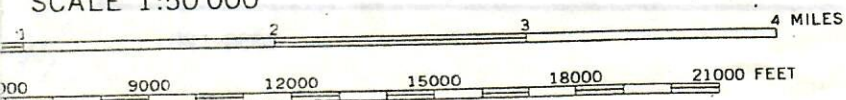


SCALE 1:50 000



COLORADO



RECEIVED
JUN 01 1984
PROD. DIV.

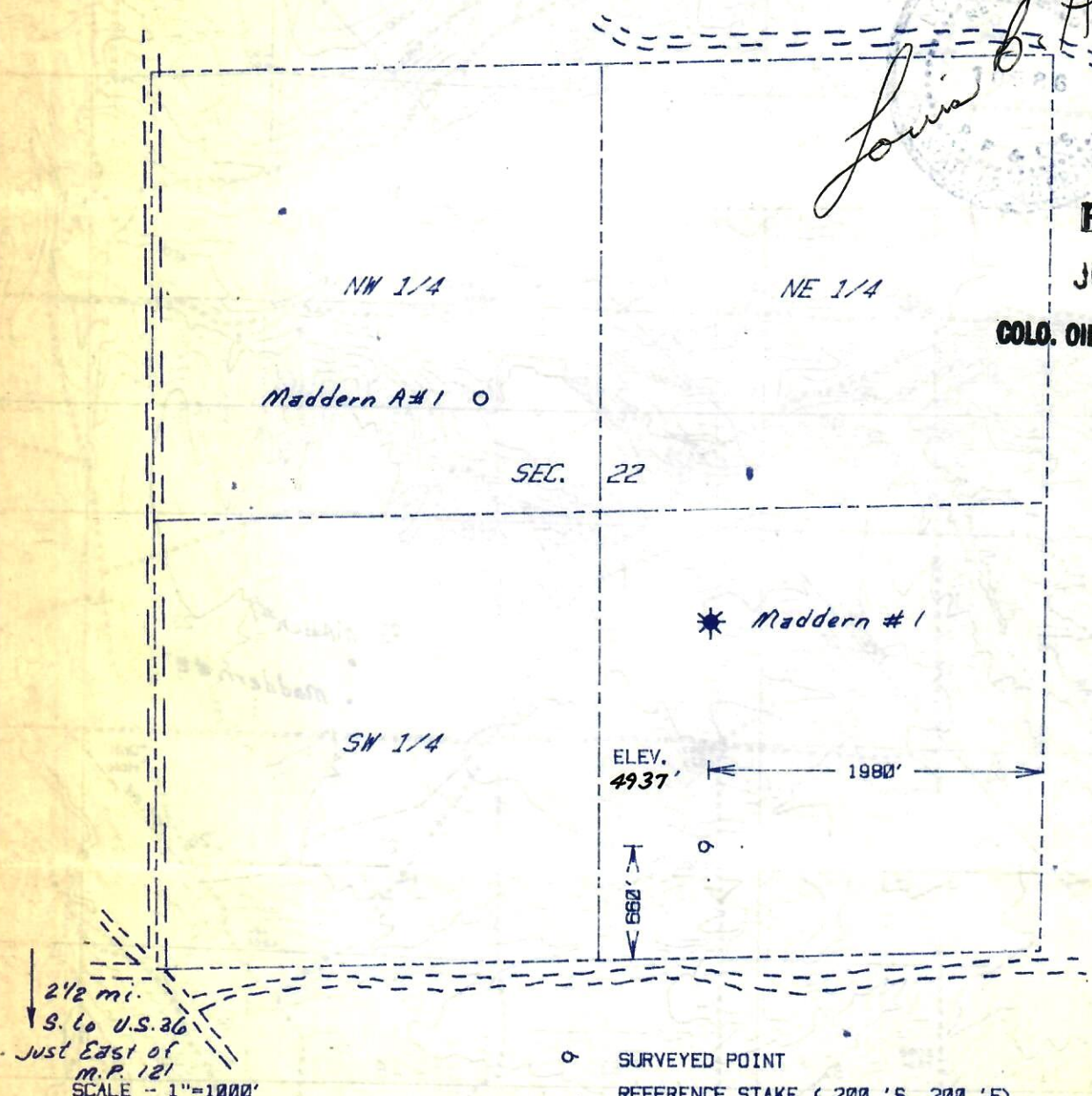
The accompanying plat is an accurate representation showing the location of a proposed well. This location may be described as a point 660 feet north of the south line, and 1980 feet west of the east line of Section 22, Township 3 S Range 58 W of the 6th P.M., ADAMS County, COLORADO. The surface elevation at this point is 4937 feet m.s.l.

Louis B. Harms

RECEIVED

JUN 01 1984

COLORADO OIL & GAS CONS. COM. 1.



○ SURVEYED POINT
REFERENCE STAKE (200 'S, 200 'E)
SE 1/4 SEC. 22 , T 3 S, R 58 W

**HARMON
ENGINEERING
SERVICES**

MADDERN #2

NATIONAL CO-OP REFINERY ASSN.

ADAMS CO., COLORADO 30 MAY 1984