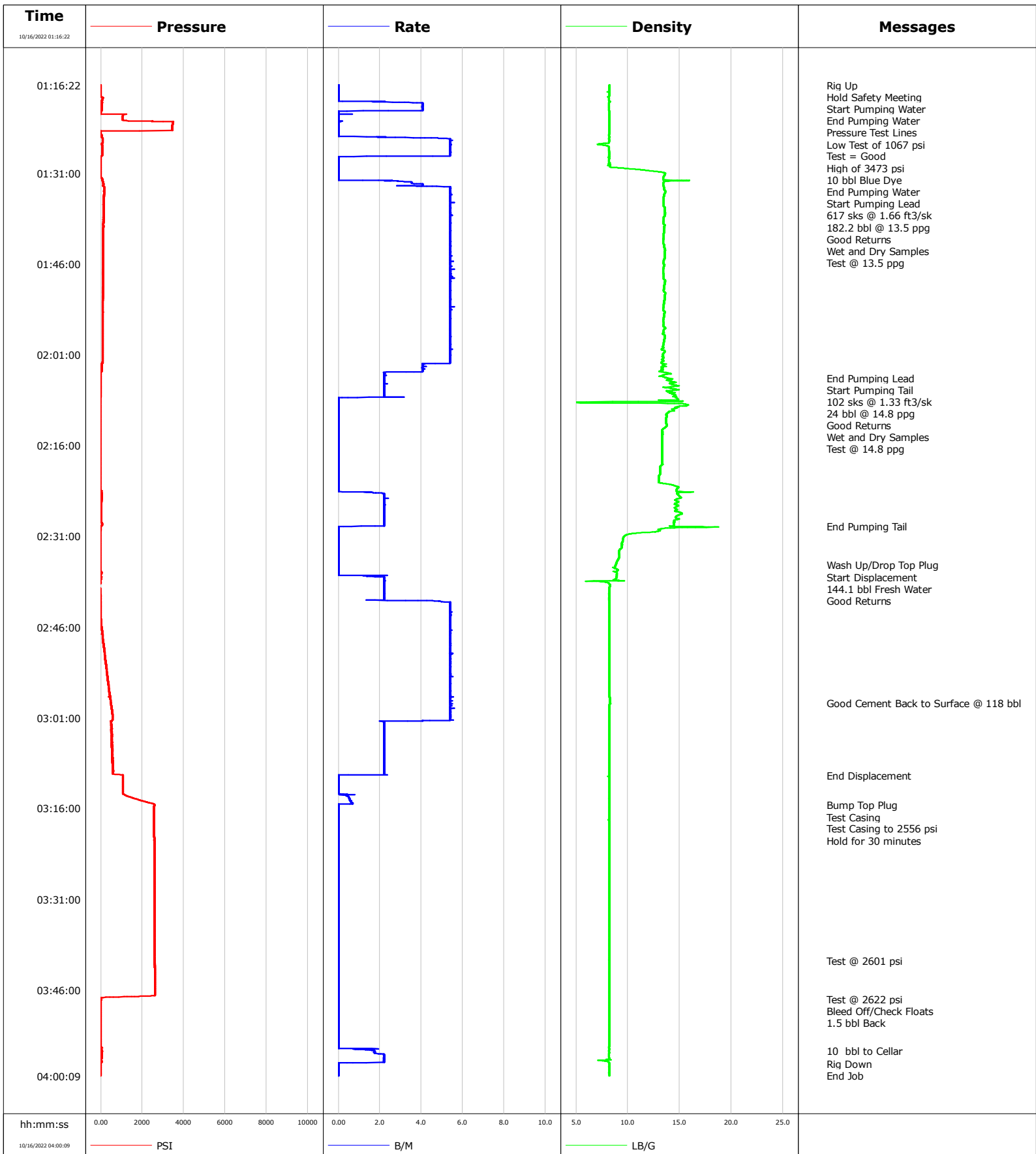


Well	Johnson C32-725	Client	Oxy
Field	DJ	SIR No.	EP06-01079
Engineer	Matt Leiker	Job Type	Surface
Country	United States	Job Date	10-15-2022



				Customer			Job Number				
				Oxy			EP06-01079				
Well		Location (legal)		Schlumberger Location			Job Start				
Johnson C32-725		NENW SEC 29 T4N R64W					Oct/15/2022				
Field		Formation Name/Type		Deviation	Bit Size		Well MD	Well TVD			
DJ				deg	in		1939.0	1939.0			
County		State/Province		BHP	BHST	BHCT	Pore Press. Gradient				
Weld		Colorado		psi	115 degF	91 degF	lb/gal				
Well Master		API/UWI									
0065876853		05-123-49291									
Rig Name	Drilled For	Service Via		Casing/Liner							
H&P 517	Oil	Land		Depth, ft	Size, in	Weight, lb/ft	Grade	Thread			
Offshore Zone	Well Class	Well Type		110.0	16.0	36.94	A-52A	8RD			
	Old	Workover		1939.0	9.6	36.0	J-55				
Drilling Fluid Type		Max. Density	Plastic Viscosity	Tubing/Drill Pipe							
		lb/gal	cP	T/D	Depth, ft	Size, in	Weight, lb/ft	Grade	Thread		
Service Line		Job Type									
Cementing		Surface									
Max. Allowed Tub. Press	Max. Allowed Ann. Press	WH Connection		Perforations/Open Hole							
psi	psi	Single Cement head		Top, ft	Bottom, ft	shot/ft	No. of Shots	Total Interval			
Service Instructions Pressure Test : 3500 psi Estimated BOC = 1909' ; Estimated TOC = 0' Cement Type Density = 13.5 ppg Class C Volume = 182.2 bbl ; Sacks = 617 Yield = 1.66 ft ³ /sk ; GPS = 8.86 14.8 ppg Class C Tail Volume = 24 bbl ; Sacks = 102 Yield = 1.33 ; GPS = 6.37 Water : Temp 60;Cl <500 ; pH 7 Cement to Surface = 26 bbl				ft	ft			ft			
				ft	ft			Diameter			
				ft	ft			in			
Casing/Tubing Secured		<input checked="" type="checkbox"/>	1 Hole Vol. Circulated prior to Cement	<input checked="" type="checkbox"/>	Casing Tools		Squeeze Job				
Lift Pressure		psi		Shoe Type		Squeeze Type					
Pipe Rotated		<input type="checkbox"/>	Pipe Reciprocated	<input type="checkbox"/>	Shoe Depth		ft	Tool Type			
No. Centralizers		Top Plugs	Bottom Plugs	Stage Tool Type		Tool Depth			ft		
Cement Head Type				Stage Tool Depth		ft	Tail Pipe Size			in	
Job Scheduled For		Arrived on Location		Leave Location		Collar Type		Tail Pipe Depth		ft	
Oct/15/2022		Oct/15/2022		Oct/15/2022		Collar Depth		ft	Sqz. Total Vol.		bbl
Date	Time 24-hr clock	Treating Pressure PSI	Flow Rate B/M	Density LB/G	Volume BBL	Message					
10/16/2022	01:16:22	-10	0.0	8.22	0.0	Started Acquisition					
10/16/2022	01:18:08	-10	0.0	8.22	0.0	Start Pumping Water					
10/16/2022	01:20:42	4	0.4	8.20	6.0	End Pumping Water					
10/16/2022	01:21:23	1057	0.0	8.20	6.0	Pressure Test Lines					
10/16/2022	01:21:26	1052	0.0	8.20	6.0	Low Test of 1067 psi					
10/16/2022	01:22:01	1034	0.0	8.20	6.0	Test = Good					
10/16/2022	01:22:34	3473	0.0	8.20	6.1	High of 3473 psi					
10/16/2022	01:24:31	-15	0.0	8.19	6.1	10 bbl Blue Dye					
10/16/2022	01:28:14	-5	0.1	8.21	22.9	End Pumping Water					
10/16/2022	01:31:40	-10	0.0	13.41	22.9	Start Pumping Lead					
10/16/2022	01:31:53	49	0.0	13.40	22.9	617 sks @ 1.66 ft ³ /sk					
10/16/2022	01:31:54	59	0.0	13.41	22.9	182.2 bbl @ 13.5 ppg					
10/16/2022	02:04:47	-15	2.2	13.66	192.6	End Pumping Lead					
10/16/2022	02:04:49	-15	2.2	13.81	192.7	Start Pumping Tail					
10/16/2022	02:04:50	-15	2.2	13.88	192.7	Wet and Dry Samples					
10/16/2022	02:29:20	-5	0.6	14.14	212.2	End Pumping Tail					
10/16/2022	02:35:44	-33	0.0	8.82	212.2	Wash Up/Drop Top Plug					
10/16/2022	02:36:42	-33	0.0	8.96	212.2	Start Displacement					
10/16/2022	02:37:33	-5	1.4	8.94	212.5	144.1 bbl Fresh Water					
10/16/2022	02:58:31	480	5.4	8.28	312.7	Good Cement Back to Surface @ 118 bbl					
10/16/2022	03:10:30	1061	0.0	8.22	348.4	End Displacement					

Well		Field		Job Start		Customer		Job Number	
Johnson C32-725		DJ		Oct/15/2022		Oxy		EP06-01079	
Date	Time 24-hr clock	Treating Pressure PSI	Flow Rate B/M	Density LB/G	Volume BBL	Message			
10/16/2022	03:15:26	2572	0.0	8.22	349.3	Test Casing to 2556 psi			
10/16/2022	03:15:27	2572	0.0	8.22	349.3	Hold for 30 minutes			
10/16/2022	03:41:06	2595	0.0	8.19	349.3	Test @ 2601 psi			
10/16/2022	03:47:29	8	0.0	8.19	349.3	Test @ 2622 psi			
10/16/2022	03:47:31	4	0.0	8.19	349.3	1.5 bbl Back			
10/16/2022	03:56:01	45	1.7	8.18	349.9	10 bbl to Cellar			
10/16/2022	03:58:07	-10	0.0	8.22	353.9	Rig Down			

Post Job Summary

Average Pump Rates, bbl/min				Volume of Fluid Injected, bbl			
Slurry	N2	Mud	Maximum Rate	Total Slurry	Mud	Spacer	N2
4.2			5.6	206.4	0.0	30.0	
Treating Pressure Summary, psi				Breakdown Fluid			
Maximum	Final	Average	Bump Plug to	Breakdown	Type	Volume	Density
3492	0	963				bbl	lb/gal
Avg. N2 Percent	Designed Slurry Volume	Displacement	Mix Water Temp	Cement Circulated to Surface?	<input checked="" type="checkbox"/>	Volume	bbl
%	206.4 bbl	144.1 bbl	60 degF	Washed Thru Perfs	<input type="checkbox"/>	To	ft
Customer or Authorized Representative	Schlumberger Supervisor			Circulation Lost	<input type="checkbox"/>	Job Completed	<input checked="" type="checkbox"/>
Charles Collver	Matt Leiker			-		-	