

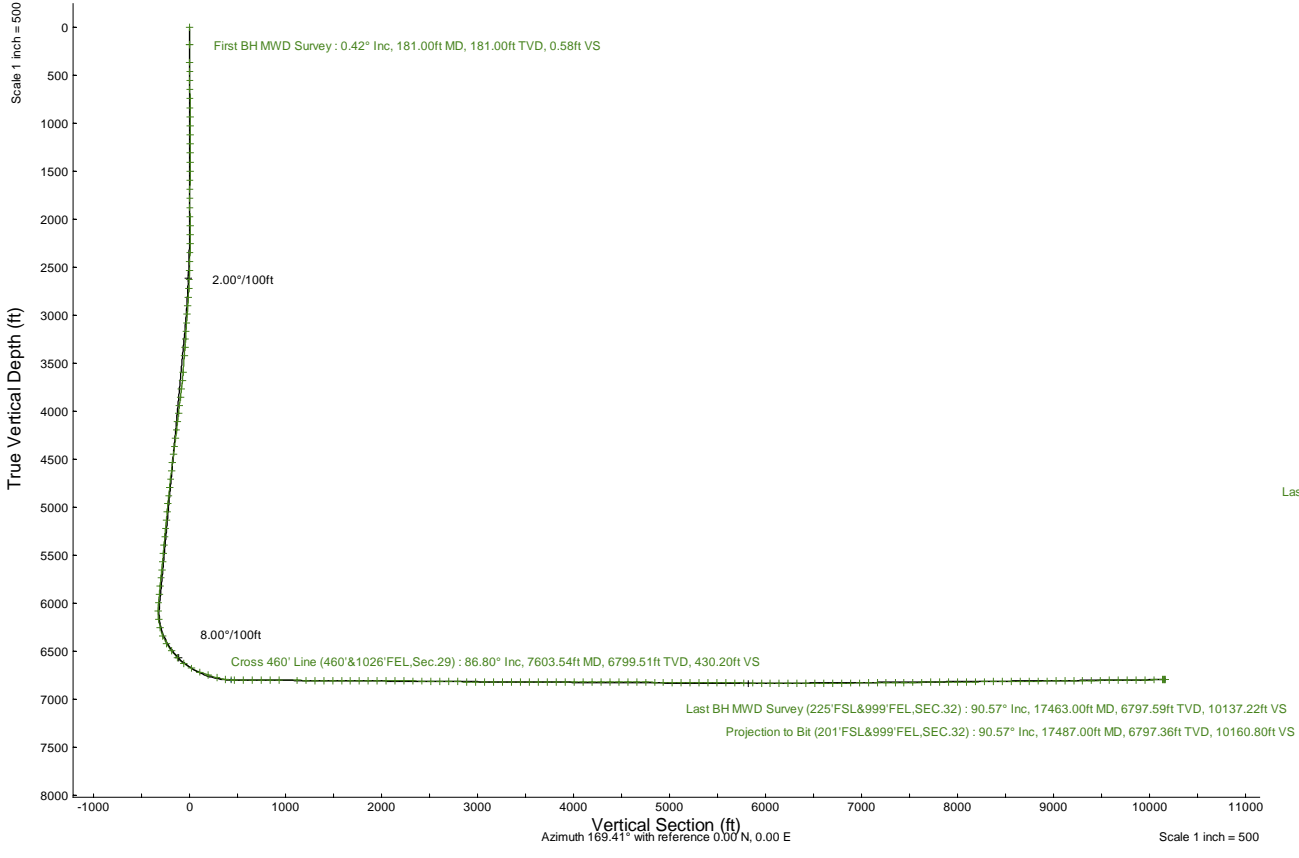
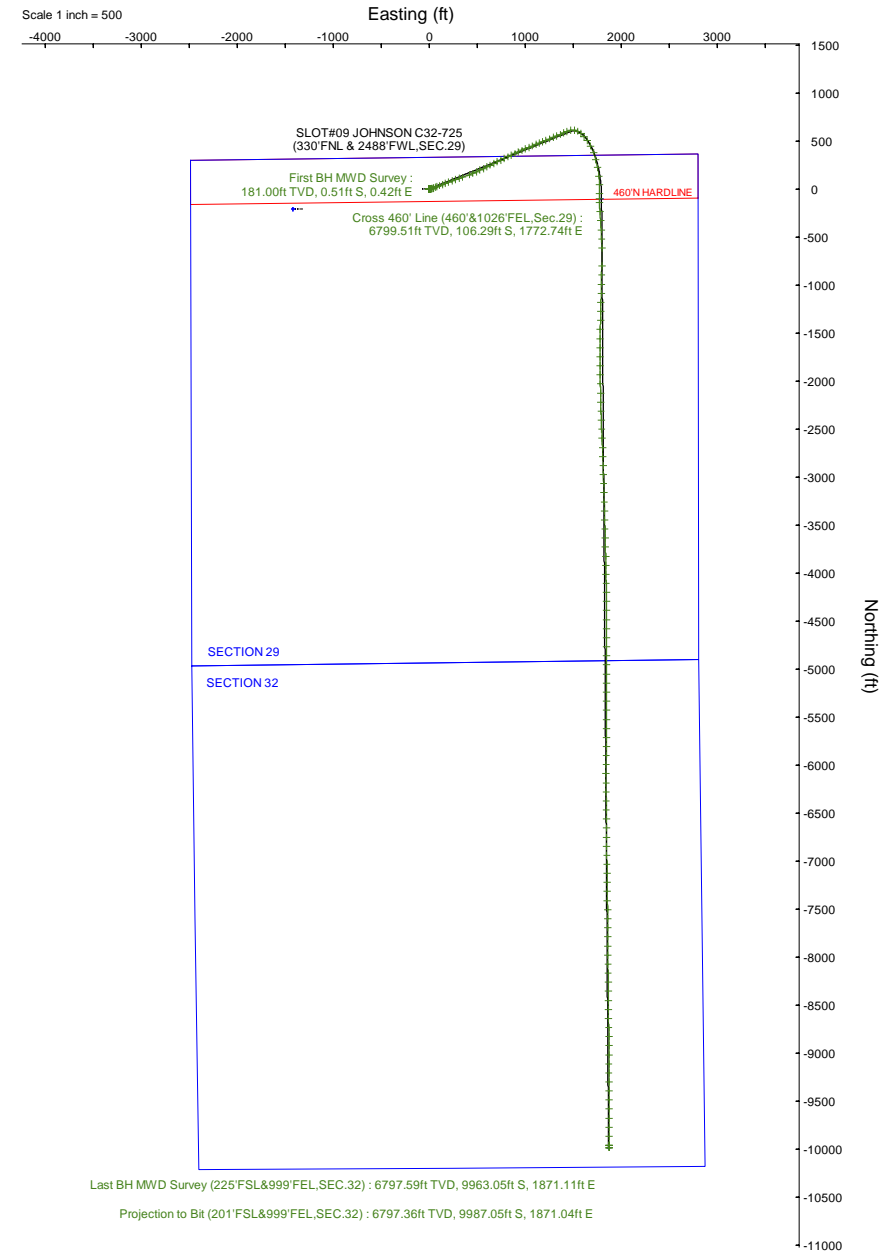
NOBLE ENERGY, INC

Location: COLORADO Slot: SLOT#09 JOHNSON C32-725 (330'FNL & 2488'FWL,SEC.29)
 Field: WELD COUNTY (NOBLE NAD 83 GRID) Well: JOHNSON C32-725
 Facility: SEC.29-T04N-R64W Wellbore: JOHNSON C32-725 PWB

Plot reference wellpath is JOHNSON C32-725 (REV-A.0) PWP	Grid System: NAD83 / Lambert Colorado SP, Northern Zone (501), US feet
True vertical depths are referenced to (4774'GL+30'KB@4804'RKB) (RKB)	North Reference: Grid north
Reference wellpath measured depths are referenced to (4774'GL+30'KB@4804'RKB) (RKB)	Scale: True distance
(4774'GL+30'KB@4804'RKB) (RKB) to Mean Sea Level: 4804 feet	Coordinates are in feet referenced to Slot
Mean Sea Level to Ground level (At Slot: SLOT#09 JOHNSON C32-725 (330'FNL & 2488'FWL,SEC.29)): 0 feet	Depths are in feet
Offset wellpath MDs are referenced to each path's default MD datum	Created by: guenaler on 2022-10-28; Database: WA_Denver

Location Information

Facility Name	Grid East (US ft)	Grid North (US ft)	Latitude	Longitude		
SEC.29-T04N-R64W	3256543.160	1349537.995	40°17'21.2280"N	104°34'49.2960"W		
Slot	Local N (ft)	Local E (ft)	Grid East (US ft)	Grid North (US ft)	Latitude	Longitude
SLOT#09 JOHNSON C32-725 (330'FNL & 2488'FWL,SEC.29)	211.48	1417.87	3257960.965	1349749.467	40°17'23.1720"N	104°34'30.9720"W
(4774'GL+30'KB@4804'RKB) (RKB) to Ground level (At Slot: SLOT#09 JOHNSON C32-725 (330'FNL & 2488'FWL,SEC.29))					4804ft	
Mean Sea Level to Ground level (At Slot: SLOT#09 JOHNSON C32-725 (330'FNL & 2488'FWL,SEC.29))					0ft	
(4774'GL+30'KB@4804'RKB) (RKB) to Mean Sea Level					4804ft	





Actual Wellpath Report

JOHNSON C32-725 AWP

Page 1 of 7



REFERENCE WELLPATH IDENTIFICATION

Operator	NOBLE ENERGY, INC	Well	JOHNSON C32-725
Field	WELD COUNTY (NOBLE NAD 83 GRID)	API	05-123-49291
Facility	SEC.29-T04N-R64W	Wellbore	JOHNSON C32-725
Slot	SLOT#09 JOHNSON C32-725 (330'FNL & 2488'FWL,SEC.29)		

REPORT SETUP INFORMATION

Projection System	NAD83 / Lambert Colorado SP, Northern Zone (501), US feet	Software System	WellArchitect® 6.0
North Reference	Grid	User	Guenaler
Scale	0.999957	Report Generated	10/28/2022 at 3:08:57 PM
Convergence at slot	0.60° East	Database	WA_Denver

WELLPATH LOCATION

	Local coordinates		Grid coordinates		Geographic coordinates	
	North[ft]	East[ft]	Easting[US ft]	Northing[US ft]	Latitude	Longitude
Slot Location	211.48	1417.87	3257960.97	1349749.47	40.2897700°	-104.5752700°
Facility Reference Pt			3256543.16	1349538.00	40.2892300°	-104.5803600°
Field Reference Pt			3000000.00	4454105.15	48.7761986°	-105.5000000°

WELLPATH DATUM

Calculation method	Minimum curvature	(4774'GL+30'KB@4804'RKB) (RKB) to Facility Vertical Datum	4804.00ft
Horizontal Reference Pt	Slot	(4774'GL+30'KB@4804'RKB) (RKB) to Mean Sea Level	4804.00ft
Vertical Reference Pt	(4774'GL+30'KB@4804'RKB) (RKB)	(4774'GL+30'KB@4804'RKB) (RKB) to Ground Level at Slot (SLOT#09 JOHNSON C32-725 (330'FNL & 2488'FWL,SEC.29))	4804.00ft
MD Reference Pt	(4774'GL+30'KB@4804'RKB) (RKB)	Section Origin	N 0.00, E 0.00 ft
Field Vertical Reference	Mean Sea Level	Section Azimuth	169.41°



Actual Wellpath Report

JOHNSON C32-725 AWP

Page 2 of 7



REFERENCE WELLPATH IDENTIFICATION			
Operator	NOBLE ENERGY, INC	Well	JOHNSON C32-725
Field	WELD COUNTY (NOBLE NAD 83 GRID)	API	05-123-49291
Facility	SEC.29-T04N-R64W	Wellbore	JOHNSON C32-725
Slot	SLOT#09 JOHNSON C32-725 (330'FNL & 2488'FWL,SEC.29)		

WELLPATH DATA (184 stations)										
MD [ft]	Inclination [°]	Azimuth [°]	TVD [ft]	Vert Sect [ft]	North [ft]	East [ft]	Latitude	Longitude	DLS [°/100ft]	Comments
0.00	0.000	140.690	0.00	0.00	0.00	0.00	40.2897700	-104.5752700	0.00	
181.00	0.420	140.690	181.00	0.58	-0.51	0.42	40.2897686	-104.5752685	0.23	First BH MWD Survey
366.00	0.380	161.320	365.99	1.78	-1.62	1.05	40.2897655	-104.5752663	0.08	
461.00	0.340	133.390	460.99	2.32	-2.11	1.35	40.2897642	-104.5752652	0.19	
555.00	0.360	120.760	554.99	2.74	-2.45	1.81	40.2897632	-104.5752636	0.08	
650.00	0.180	112.580	649.99	3.02	-2.66	2.20	40.2897626	-104.5752622	0.19	
745.00	0.230	187.100	744.99	3.29	-2.91	2.32	40.2897619	-104.5752618	0.26	
839.00	0.370	179.190	838.99	3.77	-3.40	2.30	40.2897606	-104.5752619	0.15	
934.00	0.400	194.950	933.99	4.37	-4.03	2.22	40.2897589	-104.5752622	0.12	
1028.00	0.290	193.430	1027.98	4.88	-4.58	2.08	40.2897574	-104.5752627	0.12	
1122.00	0.190	239.800	1121.98	5.15	-4.89	1.89	40.2897565	-104.5752634	0.22	
1217.00	0.210	253.300	1216.98	5.22	-5.02	1.58	40.2897562	-104.5752645	0.05	
1312.00	0.090	353.710	1311.98	5.17	-4.99	1.41	40.2897563	-104.5752651	0.26	
1407.00	0.220	359.860	1406.98	4.91	-4.73	1.40	40.2897570	-104.5752652	0.14	
1501.00	0.690	22.700	1500.98	4.26	-4.03	1.62	40.2897589	-104.5752643	0.53	
1595.00	0.400	353.920	1594.97	3.46	-3.18	1.80	40.2897612	-104.5752637	0.42	
1690.00	0.380	299.640	1689.97	2.93	-2.70	1.49	40.2897626	-104.5752647	0.38	
1785.00	0.500	281.450	1784.97	2.57	-2.46	0.81	40.2897632	-104.5752672	0.19	
1879.00	0.470	227.380	1878.97	2.62	-2.64	0.13	40.2897628	-104.5752696	0.47	
1975.00	0.920	210.130	1974.96	3.41	-3.57	-0.55	40.2897602	-104.5752721	0.51	
2069.00	4.040	101.930	2068.88	5.25	-4.91	2.31	40.2897565	-104.5752619	4.70	
2163.00	4.880	70.520	2162.61	5.90	-4.26	9.32	40.2897580	-104.5752367	2.71	
2258.00	5.120	72.520	2257.25	4.77	-1.64	17.18	40.2897650	-104.5752085	0.31	
2352.00	5.950	70.180	2350.81	3.48	1.27	25.76	40.2897728	-104.5751776	0.91	
2447.00	7.200	67.190	2445.18	1.43	5.25	35.88	40.2897834	-104.5751412	1.36	
2541.00	8.780	68.530	2538.27	-1.17	10.16	47.99	40.2897965	-104.5750976	1.69	
2635.00	10.780	68.960	2630.90	-4.12	15.94	62.87	40.2898120	-104.5750441	2.13	
2730.00	14.390	68.600	2723.60	-7.95	23.44	82.16	40.2898320	-104.5749746	3.80	
2824.00	17.740	68.890	2813.92	-12.75	32.86	106.40	40.2898572	-104.5748874	3.56	
2919.00	20.830	68.680	2903.58	-18.54	44.22	135.65	40.2898875	-104.5747821	3.25	
3013.00	20.820	68.670	2991.43	-24.77	56.37	166.78	40.2899200	-104.5746701	0.01	
3108.00	23.780	69.960	3079.32	-31.06	69.08	200.50	40.2899539	-104.5745487	3.16	
3203.00	25.040	70.450	3165.83	-37.34	82.37	237.44	40.2899893	-104.5744158	1.34	
3297.00	24.590	70.940	3251.15	-43.32	95.41	274.68	40.2900240	-104.5742819	0.53	
3392.00	24.150	71.510	3337.68	-48.90	108.03	311.79	40.2900576	-104.5741484	0.53	
3486.00	23.690	68.760	3423.61	-55.04	120.97	347.63	40.2900921	-104.5740195	1.28	
3675.00	22.280	70.420	3597.60	-67.66	146.74	416.78	40.2901608	-104.5737706	0.82	
3769.00	25.760	66.460	3683.46	-75.02	160.87	452.31	40.2901986	-104.5736428	4.08	
3864.00	25.390	64.990	3769.15	-84.72	177.73	489.69	40.2902438	-104.5735081	0.77	
3958.00	25.300	64.610	3854.10	-94.88	194.86	526.10	40.2902898	-104.5733770	0.20	
4052.00	25.320	64.320	3939.08	-105.24	212.18	562.36	40.2903363	-104.5732464	0.13	
4147.00	25.250	64.870	4024.98	-115.62	229.59	599.01	40.2903830	-104.5731143	0.26	
4241.00	25.320	64.440	4109.97	-125.85	246.78	635.30	40.2904291	-104.5729836	0.21	
4336.00	25.170	64.300	4195.90	-136.36	264.30	671.83	40.2904762	-104.5728520	0.17	
4430.00	25.330	64.670	4280.92	-146.69	281.57	708.01	40.2905226	-104.5727217	0.24	



Actual Wellpath Report

JOHNSON C32-725 AWP

Page 3 of 7



REFERENCE WELLPATH IDENTIFICATION

Operator	NOBLE ENERGY, INC	Well	JOHNSON C32-725
Field	WELD COUNTY (NOBLE NAD 83 GRID)	API	05-123-49291
Facility	SEC.29-T04N-R64W	Wellbore	JOHNSON C32-725
Slot	SLOT#09 JOHNSON C32-725 (330'FNL & 2488'FWL,SEC.29)		

WELLPATH DATA (184 stations) † = interpolated, ‡ = extrapolated station

MD [ft]	Inclination [°]	Azimuth [°]	TVD [ft]	Vert Sect [ft]	North [ft]	East [ft]	Latitude	Longitude	DLS ["/100ft]	Comments
4525.00	25.210	64.620	4366.83	-157.03	298.94	744.66	40.2905692	-104.5725897	0.13	
4619.00	25.270	63.490	4451.85	-167.64	316.48	780.70	40.2906163	-104.5724598	0.52	
4714.00	24.990	65.220	4537.86	-178.12	333.94	817.07	40.2906632	-104.5723288	0.83	
4808.00	25.280	65.560	4622.96	-187.80	350.56	853.37	40.2907078	-104.5721981	0.34	
4902.00	25.200	64.900	4707.99	-197.62	367.36	889.76	40.2907528	-104.5720670	0.31	
4997.00	25.090	65.050	4793.98	-207.68	384.43	926.34	40.2907986	-104.5719353	0.13	
5092.00	25.210	67.560	4879.98	-216.83	400.65	963.30	40.2908421	-104.5718022	1.13	
5186.00	25.130	67.580	4965.05	-225.04	415.91	1000.26	40.2908829	-104.5716691	0.09	
5280.00	25.320	67.800	5050.09	-233.18	431.11	1037.32	40.2909236	-104.5715357	0.23	
5375.00	24.950	67.390	5136.09	-241.44	446.49	1074.62	40.2909647	-104.5714014	0.43	
5469.00	23.570	67.520	5221.79	-249.44	461.30	1110.29	40.2910043	-104.5712730	1.47	
5564.00	23.410	67.530	5308.92	-257.24	475.78	1145.28	40.2910431	-104.5711470	0.17	
5658.00	23.040	67.380	5395.30	-264.92	489.99	1179.52	40.2910811	-104.5710238	0.40	
5753.00	24.980	67.790	5482.08	-272.84	504.72	1215.25	40.2911205	-104.5708952	2.05	
5848.00	24.990	67.560	5568.19	-281.00	519.97	1252.37	40.2911613	-104.5707615	0.10	
5942.00	24.930	68.060	5653.41	-288.98	534.95	1289.10	40.2912013	-104.5706293	0.23	
6036.00	25.250	66.900	5738.54	-297.22	550.21	1325.92	40.2912422	-104.5704968	0.62	
6130.00	25.260	66.350	5823.55	-306.10	566.13	1362.73	40.2912848	-104.5703642	0.25	
6225.00	24.410	67.270	5909.77	-314.81	581.84	1399.40	40.2913269	-104.5702322	0.98	
6319.00	25.000	67.050	5995.16	-323.15	597.09	1435.61	40.2913677	-104.5701018	0.64	
6413.00	25.050	76.450	6080.37	-328.43	609.51	1473.26	40.2914007	-104.5699664	4.23	
6508.00	23.380	101.280	6167.24	-322.43	610.53	1511.40	40.2914024	-104.5698297	10.79	
6602.00	23.380	112.070	6253.56	-305.41	599.87	1546.99	40.2913721	-104.5697025	4.55	
6697.00	26.270	131.340	6339.91	-278.64	578.86	1580.31	40.2913135	-104.5695839	9.00	
6791.00	33.890	139.960	6421.23	-239.37	544.99	1612.85	40.2912196	-104.5694685	9.30	
6886.00	38.890	144.840	6497.70	-189.14	500.30	1647.09	40.2910959	-104.5693474	6.08	
6980.00	46.040	152.060	6567.04	-129.90	446.18	1680.00	40.2909464	-104.5692315	9.20	
7075.00	53.850	158.720	6628.17	-59.42	380.09	1710.00	40.2907642	-104.5691265	9.81	
7169.00	61.060	165.470	6678.74	19.07	304.75	1734.15	40.2905567	-104.5690428	9.76	
7264.00	68.970	168.820	6718.85	105.03	220.86	1753.21	40.2903259	-104.5689776	8.92	
7358.00	72.620	172.740	6749.77	193.74	133.27	1767.39	40.2900850	-104.5689300	5.53	
7452.00	75.690	180.130	6775.47	283.40	43.10	1772.96	40.2898374	-104.5689135	8.24	
7547.00	81.880	180.210	6793.94	374.90	-50.04	1772.69	40.2895817	-104.5689180	6.52	
7603.54†	86.800	179.685	6799.51	430.20	-106.29	1772.74	40.2894273	-104.5689199	8.75	Cross 460' Line (460'&1026'FEL,Sec.29)
7641.00	90.060	179.340	6800.54	467.06	-143.73	1773.06	40.2893246	-104.5689202	8.75	
7736.00	89.570	176.260	6800.84	561.04	-238.65	1776.71	40.2890639	-104.5689107	3.28	
7830.00	89.750	175.370	6801.40	654.45	-332.39	1783.56	40.2888064	-104.5688896	0.97	
7925.00	89.260	176.550	6802.22	748.82	-427.15	1790.26	40.2885461	-104.5688692	1.34	
8019.00	89.450	177.800	6803.28	841.95	-521.03	1794.89	40.2882883	-104.5688561	1.34	
8113.00	89.780	179.390	6803.91	934.74	-615.00	1797.19	40.2880303	-104.5688514	1.73	
8303.00	89.540	180.930	6805.04	1121.40	-804.99	1796.66	40.2875089	-104.5688604	0.82	
8397.00	89.320	181.400	6805.97	1213.43	-898.96	1794.75	40.2872510	-104.5688708	0.55	
8492.00	89.850	181.010	6806.66	1306.42	-993.94	1792.76	40.2869903	-104.5688816	0.69	
8586.00	90.000	181.590	6806.79	1398.40	-1087.91	1790.62	40.2867325	-104.5688927	0.64	
8681.00	90.030	181.560	6806.76	1491.27	-1182.88	1788.01	40.2864719	-104.5689057	0.04	



Actual Wellpath Report

JOHNSON C32-725 AWP

Page 4 of 7



REFERENCE WELLPATH IDENTIFICATION			
Operator	NOBLE ENERGY, INC	Well	JOHNSON C32-725
Field	WELD COUNTY (NOBLE NAD 83 GRID)	API	05-123-49291
Facility	SEC.29-T04N-R64W	Wellbore	JOHNSON C32-725
Slot	SLOT#09 JOHNSON C32-725 (330'FNL & 2488'FWL,SEC.29)		

WELLPATH DATA (184 stations)										
MD [ft]	Inclination [°]	Azimuth [°]	TVD [ft]	Vert Sect [ft]	North [ft]	East [ft]	Latitude	Longitude	DLS [°/100ft]	Comments
8775.00	89.540	181.010	6807.11	1583.26	-1276.85	1785.90	40.2862140	-104.5689168	0.78	
8870.00	89.690	181.870	6807.75	1676.17	-1371.82	1783.52	40.2859534	-104.5689289	0.92	
8964.00	90.150	181.710	6807.88	1767.98	-1465.77	1780.58	40.2856956	-104.5689430	0.52	
9059.00	89.510	179.860	6808.17	1861.11	-1560.76	1779.28	40.2854349	-104.5689512	2.06	
9153.00	89.540	179.970	6808.94	1953.53	-1654.75	1779.42	40.2851769	-104.5689542	0.12	
9248.00	90.000	181.230	6809.33	2046.73	-1749.75	1778.42	40.2849162	-104.5689614	1.41	
9342.00	89.550	178.810	6809.70	2139.11	-1843.74	1778.39	40.2846582	-104.5689650	2.62	
9437.00	89.340	179.160	6810.62	2232.78	-1938.72	1780.07	40.2843975	-104.5689626	0.43	
9531.00	89.180	178.820	6811.83	2325.47	-2032.70	1781.73	40.2841395	-104.5689602	0.40	
9626.00	89.370	177.800	6813.03	2419.31	-2127.65	1784.53	40.2838788	-104.5689537	1.09	
9720.00	89.490	179.010	6813.97	2512.15	-2221.60	1787.15	40.2836208	-104.5689479	1.29	
9815.00	89.460	179.060	6814.84	2605.81	-2316.59	1788.75	40.2833601	-104.5689457	0.06	
9909.00	89.370	177.770	6815.80	2698.65	-2410.54	1791.35	40.2831021	-104.5689399	1.38	
10004.00	88.440	177.410	6817.61	2792.66	-2505.44	1795.34	40.2828415	-104.5689292	1.05	
10098.00	88.540	177.410	6820.09	2885.72	-2599.31	1799.59	40.2825837	-104.5689175	0.11	
10192.00	89.680	177.820	6821.55	2978.74	-2693.22	1803.50	40.2823258	-104.5689070	1.29	
10287.00	89.310	177.620	6822.39	3072.74	-2788.14	1807.28	40.2820652	-104.5688970	0.44	
10381.00	90.320	177.970	6822.69	3165.73	-2882.07	1810.89	40.2818073	-104.5688876	1.14	
10476.00	89.950	178.790	6822.47	3259.57	-2977.03	1813.58	40.2815466	-104.5688816	0.95	
10570.00	89.920	178.130	6822.57	3352.40	-3070.99	1816.11	40.2812886	-104.5688760	0.70	
10665.00	90.230	178.360	6822.45	3446.27	-3165.95	1819.02	40.2810278	-104.5688692	0.41	
10759.00	90.010	177.920	6822.25	3539.19	-3259.90	1822.07	40.2807699	-104.5688618	0.52	
10854.00	90.600	178.490	6821.75	3633.07	-3354.85	1825.04	40.2805092	-104.5688547	0.86	
10948.00	90.410	178.680	6820.92	3725.86	-3448.82	1827.36	40.2802512	-104.5688499	0.29	
11043.00	90.010	178.750	6820.57	3819.61	-3543.79	1829.49	40.2799904	-104.5688459	0.43	
11137.00	90.320	178.860	6820.30	3912.35	-3637.77	1831.45	40.2797324	-104.5688424	0.35	
11232.00	89.310	178.210	6820.61	4006.15	-3732.74	1833.88	40.2794717	-104.5688372	1.26	
11326.00	89.430	178.520	6821.64	4099.00	-3826.69	1836.57	40.2792137	-104.5688312	0.35	
11420.00	89.770	178.650	6822.30	4191.79	-3920.66	1838.89	40.2789557	-104.5688264	0.39	
11514.00	89.950	179.090	6822.53	4284.51	-4014.64	1840.74	40.2786977	-104.5688233	0.51	
11609.00	89.640	178.460	6822.87	4378.25	-4109.62	1842.77	40.2784370	-104.5688196	0.74	
11703.00	89.830	179.860	6823.30	4470.89	-4203.61	1844.15	40.2781789	-104.5688182	1.50	
11798.00	89.610	179.420	6823.76	4564.37	-4298.60	1844.75	40.2779182	-104.5688196	0.52	
11892.00	89.830	179.360	6824.22	4656.95	-4392.60	1845.75	40.2776602	-104.5688196	0.24	
11987.00	89.490	179.280	6824.79	4750.53	-4487.59	1846.87	40.2773994	-104.5688191	0.37	
12081.00	89.610	179.330	6825.53	4843.13	-4581.58	1848.01	40.2771414	-104.5688185	0.14	
12175.00	89.460	180.730	6826.29	4935.52	-4675.57	1847.96	40.2768834	-104.5688223	1.50	
12270.00	89.610	180.070	6827.06	5028.77	-4770.57	1847.30	40.2766227	-104.5688282	0.71	
12365.00	89.700	180.220	6827.63	5122.11	-4865.57	1847.06	40.2763619	-104.5688326	0.18	
12459.00	89.520	179.740	6828.27	5214.51	-4959.56	1847.09	40.2761039	-104.5688361	0.55	
12554.00	89.610	180.050	6828.99	5307.92	-5054.56	1847.27	40.2758432	-104.5688390	0.34	
12648.00	89.490	179.800	6829.73	5400.34	-5148.56	1847.39	40.2755851	-104.5688421	0.30	
12743.00	89.490	180.300	6830.58	5493.71	-5243.55	1847.31	40.2753244	-104.5688460	0.53	
12837.00	90.010	181.160	6830.99	5585.88	-5337.54	1846.11	40.2750665	-104.5688538	1.07	
12931.00	89.460	180.340	6831.42	5678.04	-5431.53	1844.88	40.2748085	-104.5688618	1.05	



Actual Wellpath Report

JOHNSON C32-725 AWP

Page 5 of 7



REFERENCE WELLPATH IDENTIFICATION

Operator	NOBLE ENERGY, INC	Well	JOHNSON C32-725
Field	WELD COUNTY (NOBLE NAD 83 GRID)	API	05-123-49291
Facility	SEC.29-T04N-R64W	Wellbore	JOHNSON C32-725
Slot	SLOT#09 JOHNSON C32-725 (330'FNL & 2488'FWL,SEC.29)		

WELLPATH DATA (184 stations)

MD [ft]	Inclination [°]	Azimuth [°]	TVD [ft]	Vert Sect [ft]	North [ft]	East [ft]	Latitude	Longitude	DLS [°/100ft]	Comments
13026.00	89.640	180.370	6832.17	5771.31	-5526.53	1844.29	40.2745478	-104.5688674	0.19	
13120.00	89.770	180.020	6832.65	5863.65	-5620.53	1843.97	40.2742898	-104.5688721	0.40	
13215.00	89.670	179.930	6833.12	5957.04	-5715.53	1844.01	40.2740290	-104.5688755	0.14	
13309.00	89.580	180.630	6833.73	6049.35	-5809.52	1843.55	40.2737710	-104.5688807	0.75	
13403.00	89.980	180.660	6834.09	6141.55	-5903.51	1842.50	40.2735131	-104.5688881	0.43	
13498.00	89.670	180.400	6834.38	6234.76	-5998.51	1841.62	40.2732524	-104.5688948	0.43	
13592.00	89.520	180.080	6835.05	6327.09	-6092.51	1841.22	40.2729944	-104.5688997	0.38	
13687.00	89.340	179.550	6835.99	6420.52	-6187.50	1841.53	40.2727336	-104.5689022	0.59	
13781.00	90.780	179.730	6835.89	6513.03	-6281.50	1842.12	40.2724756	-104.5689036	1.54	
13875.00	90.380	179.840	6834.94	6605.48	-6375.49	1842.47	40.2722176	-104.5689059	0.44	
13970.00	90.470	179.470	6834.24	6698.97	-6470.49	1843.05	40.2719568	-104.5689074	0.40	
14065.00	90.630	179.590	6833.32	6792.49	-6565.48	1843.82	40.2716961	-104.5689082	0.21	
14159.00	90.470	179.460	6832.42	6885.02	-6659.47	1844.60	40.2714381	-104.5689089	0.22	
14253.00	90.500	179.340	6831.63	6977.59	-6753.46	1845.59	40.2711800	-104.5689090	0.13	
14348.00	90.720	179.170	6830.62	7071.19	-6848.45	1846.82	40.2709193	-104.5689081	0.29	
14442.00	90.600	179.080	6829.53	7163.84	-6942.43	1848.26	40.2706613	-104.5689065	0.16	
14536.00	90.540	179.590	6828.60	7256.42	-7036.42	1849.35	40.2704033	-104.5689061	0.55	
14631.00	90.470	179.440	6827.76	7349.95	-7131.41	1850.15	40.2701425	-104.5689068	0.17	
14725.00	90.380	179.300	6827.06	7442.53	-7225.41	1851.19	40.2698845	-104.5689067	0.18	
14819.00	90.570	179.270	6826.28	7535.13	-7319.39	1852.36	40.2696265	-104.5689060	0.20	
14913.00	90.630	178.290	6825.30	7627.87	-7413.37	1854.36	40.2693685	-104.5689024	1.04	
15008.00	90.720	178.240	6824.18	7721.74	-7508.32	1857.24	40.2691078	-104.5688956	0.11	
15103.00	90.690	178.950	6823.01	7815.51	-7603.28	1859.57	40.2688471	-104.5688908	0.75	
15197.00	90.440	179.450	6822.08	7908.14	-7697.27	1860.88	40.2685890	-104.5688897	0.59	
15292.00	90.780	180.250	6821.07	8001.56	-7792.26	1861.13	40.2683283	-104.5688924	0.91	
15387.00	90.660	180.130	6819.88	8094.88	-7887.25	1860.81	40.2680676	-104.5688971	0.18	
15481.00	90.470	179.740	6818.95	8187.29	-7981.25	1860.92	40.2678096	-104.5689002	0.46	
15576.00	90.500	179.630	6818.15	8280.76	-8076.24	1861.44	40.2675488	-104.5689019	0.12	
15670.00	90.230	179.240	6817.55	8373.33	-8170.24	1862.37	40.2672908	-104.5689021	0.50	
15765.00	90.690	179.550	6816.79	8466.89	-8265.23	1863.37	40.2670300	-104.5689021	0.58	
15859.00	90.410	179.150	6815.88	8559.47	-8359.22	1864.44	40.2667720	-104.5689018	0.52	
15954.00	90.750	179.420	6814.92	8653.06	-8454.20	1865.62	40.2665113	-104.5689012	0.46	
16048.00	91.000	179.490	6813.49	8745.61	-8548.19	1866.52	40.2662533	-104.5689015	0.28	
16142.00	90.470	179.140	6812.28	8838.20	-8642.17	1867.64	40.2659953	-104.5689010	0.68	
16237.00	90.350	179.230	6811.60	8931.82	-8737.16	1868.99	40.2657345	-104.5688997	0.16	
16331.00	90.660	179.080	6810.77	9024.46	-8831.15	1870.38	40.2654765	-104.5688983	0.37	
16425.00	90.380	180.500	6809.92	9116.92	-8925.14	1870.72	40.2652185	-104.5689006	1.54	
16520.00	91.060	180.480	6808.73	9210.14	-9020.13	1869.91	40.2649578	-104.5689071	0.72	
16614.00	90.720	179.970	6807.27	9302.46	-9114.12	1869.54	40.2646998	-104.5689119	0.65	
16708.00	90.570	179.700	6806.21	9394.90	-9208.11	1869.81	40.2644418	-104.5689145	0.33	
16803.00	90.630	180.140	6805.21	9488.30	-9303.10	1869.95	40.2641811	-104.5689176	0.47	
16897.00	90.630	179.650	6804.18	9580.73	-9397.10	1870.12	40.2639231	-104.5689205	0.52	
16992.00	90.500	179.960	6803.24	9674.16	-9492.09	1870.44	40.2636623	-104.5689229	0.35	
17086.00	90.930	180.260	6802.07	9766.52	-9586.08	1870.26	40.2634043	-104.5689271	0.56	
17181.00	90.500	179.160	6800.88	9859.98	-9681.07	1870.74	40.2631436	-104.5689290	1.24	



Actual Wellpath Report

JOHNSON C32-725 AWP

Page 6 of 7



REFERENCE WELLPATH IDENTIFICATION

Operator	NOBLE ENERGY, INC	Well	JOHNSON C32-725
Field	WELD COUNTY (NOBLE NAD 83 GRID)	API	05-123-49291
Facility	SEC.29-T04N-R64W	Wellbore	JOHNSON C32-725
Slot	SLOT#09 JOHNSON C32-725 (330'FNL & 2488'FWL,SEC.29)		

WELLPATH DATA (184 stations) † = interpolated, ‡ = extrapolated station

MD [ft]	Inclination [°]	Azimuth [°]	TVD [ft]	Vert Sect [ft]	North [ft]	East [ft]	Latitude	Longitude	DLS [°/100ft]	Comments
17275.00	90.660	179.800	6799.93	9952.53	-9775.07	1871.59	40.2628856	-104.5689295	0.70	
17370.00	90.810	180.320	6798.71	10045.89	-9870.06	1871.49	40.2626248	-104.5689334	0.57	
17463.00	90.570	180.160	6797.59	10137.22	-9963.05	1871.11	40.2623696	-104.5689383	0.31	Last BH MWD Survey (225'FSL&999'FEL,SEC.32)
17487.00‡	90.570	180.160	6797.36	10160.80	-9987.05	1871.04	40.2623037	-104.5689394	0.00	Projection to Bit (201'FSL&999'FEL,SEC.32)

TARGETS

Name	TVD [ft]	North [ft]	East [ft]	Grid East [US ft]	Grid North [US ft]	Latitude	Longitude	Shape
JOHNSON C32 SECTION 29	-12.00	-211.48	-1417.87	3256543.16	1349537.99	40.2892300	-104.5803600	polygon
	2D Polygon: dimensions not calculated							
JOHNSON C32 SECTION 32	-12.00	-211.48	-1417.87	3256543.16	1349537.99	40.2892300	-104.5803600	polygon
	2D Polygon: dimensions not calculated							
JOHNSON C32-725 BHL (200'FSL & 1003'FEL,SEC.32)	6797.00	-9988.12	1867.01	3259827.89	1339761.80	40.2623009	-104.5689539	point
JOHNSON C32-725 LP PLAN (460'FNL & 1004'FEL,SEC.29)	6801.00	-106.29	1794.72	3259755.60	1349643.18	40.2894267	-104.5688411	point
JOHNSON C32 460'N HARDLINE	7088.00	-211.48	-1417.87	3256543.16	1349537.99	40.2892300	-104.5803600	polygon
	2D Polygon: dimensions not calculated							

WELLPATH COMPOSITION - Ref Wellbore: JOHNSON C32-725 Ref Wellpath: JOHNSON C32-725 AWP

Start MD [ft]	End MD [ft]	Positional Uncertainty Model	Log Name/Comment	Wellbore	Survey Date
0.00	1879.00	OWSG MWD rev2 (MS+IFR1)	13.5" Hole NaviTrak OWSG MWD rev2 (MS+IFR1) <181'-1879'>	JOHNSON C32-725	10/21/2022
1879.00	17487.00	OWSG MWD rev2 (MS+IFR1)	8.5" Hole ATC OWSG MWD rev2 (MS+IFR1)<1975'-17463'>	JOHNSON C32-725	10/26/2022



Actual Wellpath Report

JOHNSON C32-725 AWP

Page 7 of 7



REFERENCE WELLPATH IDENTIFICATION

Operator	NOBLE ENERGY, INC	Well	JOHNSON C32-725
Field	WELD COUNTY (NOBLE NAD 83 GRID)	API	05-123-49291
Facility	SEC.29-T04N-R64W	Wellbore	JOHNSON C32-725
Slot	SLOT#09 JOHNSON C32-725 (330'FNL & 2488'FWL,SEC.29)		

WELLPATH COMMENTS

MD [ft]	Inclination [°]	Azimuth [°]	TVD [ft]	Comment
181.00	0.420	140.690	181.00	First BH MWD Survey
7603.54	86.800	179.685	6799.51	Cross 460' Line (460'&1026'FEL,Sec.29)
17463.00	90.570	180.160	6797.59	Last BH MWD Survey (225'FSL&999'FEL,SEC.32)
17487.00	90.570	180.160	6797.36	Projection to Bit (201'FSL&999'FEL,SEC.32)