

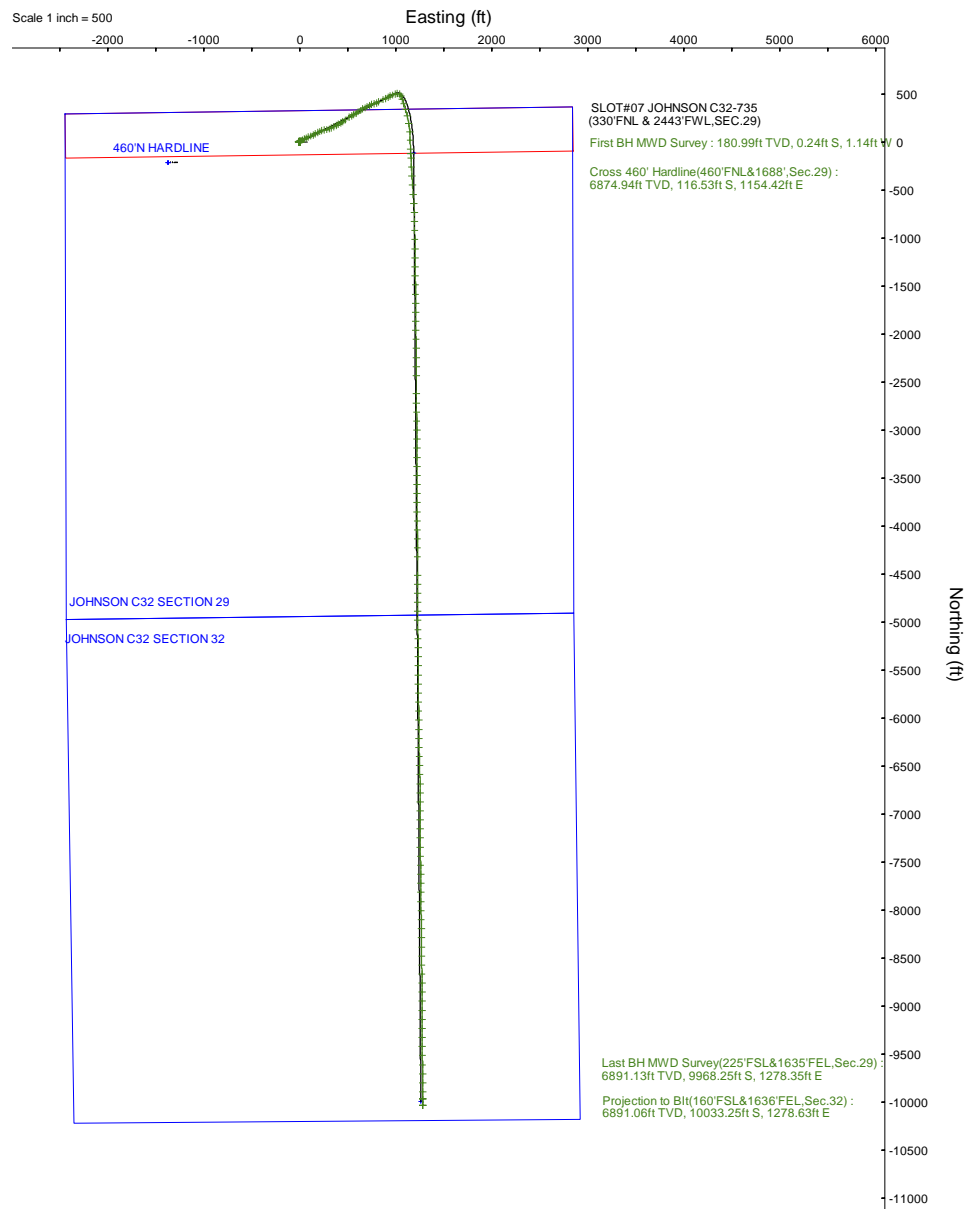
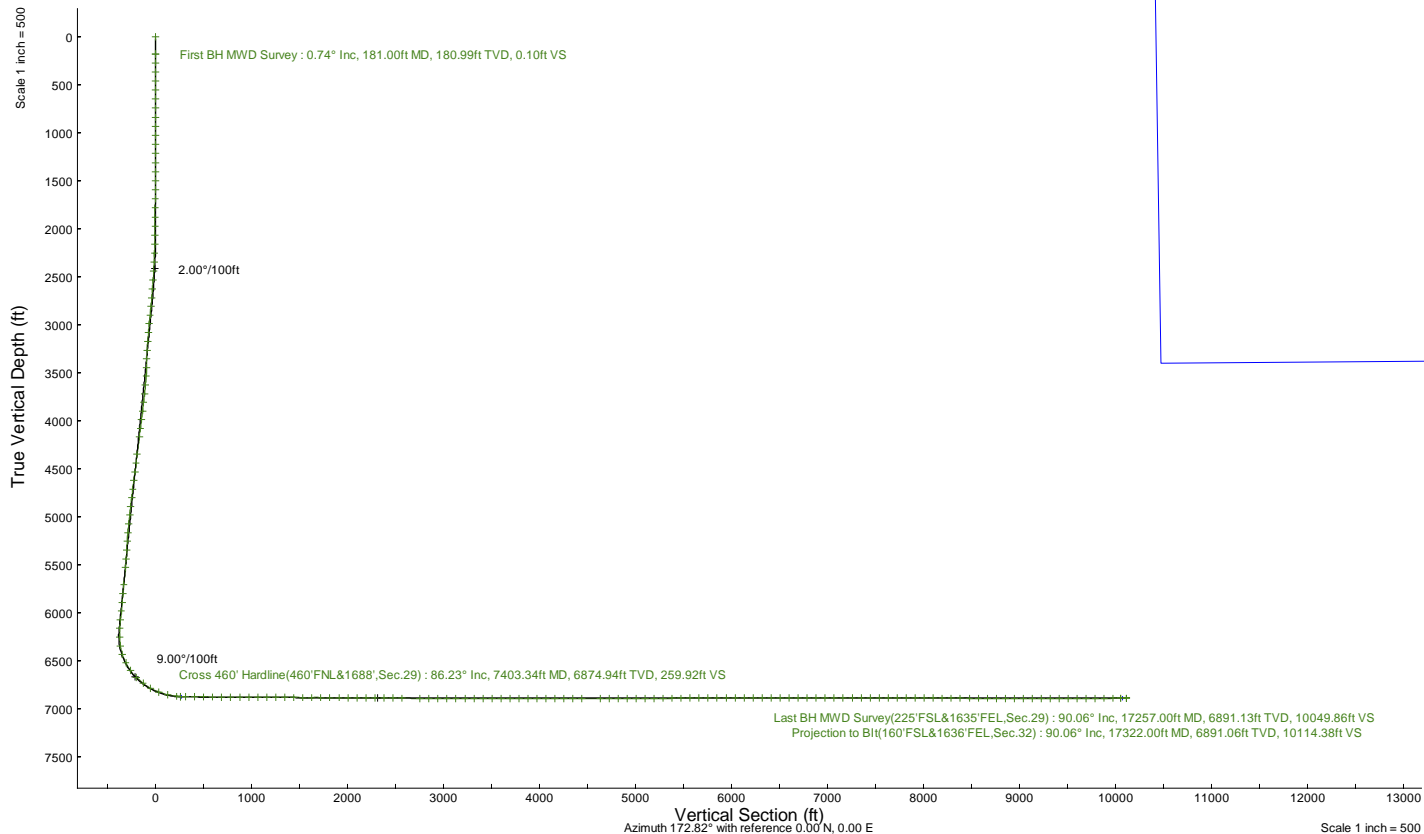
NOBLE ENERGY, INC

Location: COLORADO Slot: SLOT#07 JOHNSON C32-735 (330'FNL & 2443'FWL,SEC.29)
 Field: WELD COUNTY (NOBLE NAD 83 GRID) Well: JOHNSON C32-735
 Facility: SEC.29-T04N-R64W Wellbore: JOHNSON C32-735 PWB

Plot reference wellpath is JOHNSON C32-735 (REV-A.0) PWP
 True vertical depths are referenced to (4775'GL+30'KB@4805'RKB) (RKB)
 Reference wellpath measured depths are referenced to (4775'GL+30'KB@4805'RKB) (RKB)
 (4775'GL+30'KB@4805'RKB) (RKB) to Mean Sea Level: 4805 feet
 Mean Sea Level to Ground level (At Slot: SLOT#07 JOHNSON C32-735 (330'FNL & 2443'FWL,SEC.29)): 0 feet
 Offset wellpath MDs are referenced to each path's default MD datum
 Grid System: NAD83 / Lambert Colorado SP, Northern Zone (501), US feet
 North Reference: Grid north
 Scale: True distance
 Coordinates are in feet referenced to Slot
 Depths are in feet
 Created by: guenaler on 2022-10-24; Database: WA_Denver

Location Information

Facility Name							
SEC.29-T04N-R64W							
Slot		Local N (ft)	Local E (ft)	Grid East (US ft)	Grid North (US ft)	Latitude	Longitude
SLOT#07 JOHNSON C32-735 (330'FNL & 2443'FWL,SEC.29)		211.02	1373.24	3256543.160	1349537.995	40°17'21.2280"N	104°34'49.2360"W
(4775'GL+30'KB@4805'RKB) (RKB) to Ground level (At Slot: SLOT#07 JOHNSON C32-735 (330'FNL & 2443'FWL,SEC.29))							4805ft
Mean Sea Level to Ground level (At Slot: SLOT#07 JOHNSON C32-735 (330'FNL & 2443'FWL,SEC.29))							0ft
(4775'GL+30'KB@4805'RKB) (RKB) to Mean Sea Level							4805ft





Actual Wellpath Report

JOHNSON C32-735 AWP

Page 1 of 7



REFERENCE WELLPATH IDENTIFICATION

Operator	NOBLE ENERGY, INC	Well	JOHNSON C32-735
Field	WELD COUNTY (NOBLE NAD 83 GRID)	API	05-123-49295
Facility	SEC.29-T04N-R64W	Wellbore	JOHNSON C32-735 AWB
Slot	SLOT#07 JOHNSON C32-735 (330'FNL & 2443'FWL,SEC.29)		

REPORT SETUP INFORMATION

Projection System	NAD83 / Lambert Colorado SP, Northern Zone (501), US feet	Software System	WellArchitect® 6.0
North Reference	Grid	User	Guenaler
Scale	0.999957	Report Generated	10/24/2022 at 4:01:25 PM
Convergence at slot	0.60° East	Database	WA_Denver

WELLPATH LOCATION

	Local coordinates		Grid coordinates		Geographic coordinates	
	North[ft]	East[ft]	Easting[US ft]	Northing[US ft]	Latitude	Longitude
Slot Location	211.02	1373.24	3257916.33	1349749.00	40.2897700°	-104.5754300°
Facility Reference Pt			3256543.16	1349538.00	40.2892300°	-104.5803600°
Field Reference Pt			3000000.00	4454105.15	48.7761986°	-105.5000000°

WELLPATH DATUM

Calculation method	Minimum curvature	(4775'GL+30'KB@4805'RKB) (RKB) to Facility Vertical Datum	4805.00ft
Horizontal Reference Pt	Slot	(4775'GL+30'KB@4805'RKB) (RKB) to Mean Sea Level	4805.00ft
Vertical Reference Pt	(4775'GL+30'KB@4805'RKB) (RKB)	(4775'GL+30'KB@4805'RKB) (RKB) to Ground Level at Slot (SLOT#07 JOHNSON C32-735 (330'FNL & 2443'FWL,SEC.29))	4805.00ft
MD Reference Pt	(4775'GL+30'KB@4805'RKB) (RKB)	Section Origin	N 0.00, E 0.00 ft
Field Vertical Reference	Mean Sea Level	Section Azimuth	172.82°



Actual Wellpath Report

JOHNSON C32-735 AWP

Page 2 of 7



REFERENCE WELLPATH IDENTIFICATION			
Operator	NOBLE ENERGY, INC	Well	JOHNSON C32-735
Field	WELD COUNTY (NOBLE NAD 83 GRID)	API	05-123-49295
Facility	SEC.29-T04N-R64W	Wellbore	JOHNSON C32-735 AWB
Slot	SLOT#07 JOHNSON C32-735 (330'FNL & 2443'FWL,SEC.29)		

WELLPATH DATA (182 stations)										
MD [ft]	Inclination [°]	Azimuth [°]	TVD [ft]	Vert Sect [ft]	North [ft]	East [ft]	Latitude	Longitude	DLS [°/100ft]	Comments
0.00	0.000	257.980	0.00	0.00	0.00	0.00	40.2897700	-104.5754300	0.00	
181.00	0.740	257.980	180.99	0.10	-0.24	-1.14	40.2897694	-104.5754341	0.41	First BH MWD Survey
272.00	0.400	284.870	271.99	0.03	-0.28	-2.02	40.2897693	-104.5754373	0.47	
366.00	0.500	302.110	365.99	-0.35	0.02	-2.69	40.2897701	-104.5754396	0.18	
461.00	0.640	328.490	460.98	-1.10	0.69	-3.32	40.2897720	-104.5754419	0.31	
555.00	0.280	320.870	554.98	-1.77	1.32	-3.74	40.2897737	-104.5754433	0.39	
650.00	0.250	326.660	649.98	-2.16	1.67	-4.00	40.2897747	-104.5754443	0.04	
744.00	0.260	267.930	743.98	-2.36	1.83	-4.32	40.2897752	-104.5754454	0.27	
839.00	0.490	292.410	838.98	-2.58	1.98	-4.91	40.2897756	-104.5754475	0.29	
933.00	0.250	278.040	932.97	-2.83	2.16	-5.49	40.2897761	-104.5754496	0.27	
1028.00	0.390	240.310	1027.97	-2.76	2.03	-5.98	40.2897757	-104.5754513	0.26	
1122.00	0.390	275.460	1121.97	-2.71	1.90	-6.57	40.2897754	-104.5754535	0.25	
1217.00	0.470	268.040	1216.97	-2.82	1.92	-7.28	40.2897755	-104.5754560	0.10	
1312.00	0.360	319.840	1311.97	-3.10	2.14	-7.86	40.2897761	-104.5754581	0.40	
1406.00	0.370	310.540	1405.96	-3.57	2.56	-8.29	40.2897773	-104.5754596	0.06	
1501.00	0.680	277.400	1500.96	-3.94	2.83	-9.08	40.2897780	-104.5754624	0.44	
1595.00	0.810	296.970	1594.95	-4.46	3.20	-10.22	40.2897791	-104.5754665	0.30	
1690.00	0.800	290.470	1689.94	-5.14	3.74	-11.44	40.2897806	-104.5754709	0.10	
1784.00	0.830	279.320	1783.93	-5.64	4.08	-12.73	40.2897816	-104.5754755	0.17	
1879.00	0.830	267.900	1878.92	-5.90	4.17	-14.10	40.2897818	-104.5754804	0.17	
1975.00	0.430	21.030	1974.92	-6.27	4.48	-14.66	40.2897827	-104.5754824	1.12	
2069.00	2.840	36.640	2068.87	-8.27	6.67	-13.15	40.2897887	-104.5754769	2.58	
2164.00	3.800	74.220	2163.73	-10.43	9.42	-8.71	40.2897961	-104.5754609	2.45	
2258.00	7.540	69.390	2257.25	-12.33	12.44	0.06	40.2898041	-104.5754293	4.01	
2353.00	9.550	62.090	2351.19	-16.57	18.32	12.86	40.2898199	-104.5753832	2.40	
2447.00	10.010	67.350	2443.83	-21.51	25.12	27.29	40.2898382	-104.5753312	1.07	
2542.00	11.660	64.880	2537.13	-26.67	32.37	43.61	40.2898576	-104.5752725	1.80	
2636.00	14.690	65.220	2628.65	-33.20	41.40	63.03	40.2898818	-104.5752025	3.22	
2731.00	17.730	67.000	2719.86	-40.79	52.11	87.29	40.2899105	-104.5751152	3.24	
2825.00	16.230	63.800	2809.76	-48.97	63.50	112.25	40.2899411	-104.5750253	1.88	
2920.00	16.390	62.770	2900.94	-57.89	75.49	136.08	40.2899733	-104.5749394	0.35	
3014.00	16.580	62.500	2991.07	-67.10	87.76	159.77	40.2900063	-104.5748540	0.22	
3109.00	16.920	65.900	3082.05	-75.83	99.66	184.41	40.2900383	-104.5747653	1.09	
3203.00	15.340	63.950	3172.34	-83.83	110.71	208.07	40.2900679	-104.5746801	1.78	
3298.00	12.170	70.470	3264.61	-90.04	119.57	228.81	40.2900917	-104.5746054	3.71	
3392.00	15.300	76.480	3355.92	-93.52	125.79	250.21	40.2901081	-104.5745285	3.66	
3487.00	16.910	80.780	3447.19	-95.40	130.93	276.04	40.2901215	-104.5744357	2.11	
3581.00	17.180	67.980	3537.09	-99.44	138.33	302.41	40.2901410	-104.5743409	3.99	
3675.00	16.820	64.670	3626.99	-107.24	149.35	327.57	40.2901706	-104.5742503	1.10	
3770.00	16.770	63.220	3717.94	-116.11	161.41	352.23	40.2902030	-104.5741614	0.44	
3864.00	17.340	61.000	3807.80	-125.87	174.31	376.59	40.2902377	-104.5740736	0.92	
3959.00	16.670	58.080	3898.65	-136.83	188.38	400.54	40.2902756	-104.5739873	1.14	
4053.00	16.460	58.490	3988.75	-147.96	202.47	423.34	40.2903136	-104.5739050	0.26	
4147.00	16.690	57.390	4078.84	-159.24	216.70	446.06	40.2903520	-104.5738231	0.41	
4242.00	16.590	58.210	4169.86	-170.75	231.20	469.08	40.2903912	-104.5737400	0.27	

REFERENCE WELLPATH IDENTIFICATION

Operator	NOBLE ENERGY, INC	Well	JOHNSON C32-735
Field	WELD COUNTY (NOBLE NAD 83 GRID)	API	05-123-49295
Facility	SEC.29-T04N-R64W	Wellbore	JOHNSON C32-735 AWB
Slot	SLOT#07 JOHNSON C32-735 (330'FNL & 2443'FWL,SEC.29)		

WELLPATH DATA (182 stations) † = interpolated, ‡ = extrapolated station

MD [ft]	Inclination [°]	Azimuth [°]	TVD [ft]	Vert Sect [ft]	North [ft]	East [ft]	Latitude	Longitude	DLS [°/100ft]	Comments
4431.00	16.590	57.630	4351.00	-193.47	259.86	514.80	40.2904685	-104.5735750	0.09	
4525.00	16.800	58.000	4441.04	-204.88	274.24	537.66	40.2905073	-104.5734926	0.25	
4620.00	16.580	58.480	4532.03	-216.23	288.60	560.85	40.2905461	-104.5734089	0.27	
4714.00	16.570	57.730	4622.13	-227.44	302.77	583.62	40.2905843	-104.5733268	0.23	
4809.00	16.950	57.430	4713.09	-239.12	317.46	606.74	40.2906240	-104.5732433	0.41	
4903.00	16.660	58.530	4803.08	-250.54	331.87	629.78	40.2906629	-104.5731602	0.46	
4998.00	16.520	60.220	4894.12	-261.33	345.69	653.12	40.2907001	-104.5730760	0.53	
5092.00	15.450	61.740	4984.49	-270.97	358.26	675.75	40.2907340	-104.5729945	1.22	
5187.00	16.780	61.240	5075.75	-280.57	370.84	698.92	40.2907679	-104.5729109	1.41	
5281.00	15.700	65.530	5166.00	-289.34	382.64	722.39	40.2907996	-104.5728264	1.72	
5375.00	16.090	69.200	5256.41	-296.19	392.54	746.14	40.2908260	-104.5727408	1.15	
5470.00	15.970	73.140	5347.72	-301.48	401.00	770.96	40.2908486	-104.5726516	1.15	
5564.00	16.490	68.620	5437.98	-306.93	409.62	795.76	40.2908715	-104.5725624	1.45	
5659.00	16.480	63.060	5529.08	-314.79	420.64	820.33	40.2909010	-104.5724739	1.66	
5848.00	16.580	63.630	5710.27	-332.72	444.76	868.39	40.2909659	-104.5723007	0.10	
5942.00	16.680	63.530	5800.34	-341.58	456.73	892.48	40.2909980	-104.5722139	0.11	
6037.00	16.560	64.480	5891.37	-350.35	468.64	916.90	40.2910300	-104.5721259	0.31	
6131.00	16.560	64.680	5981.47	-358.73	480.14	941.10	40.2910609	-104.5720388	0.06	
6225.00	16.020	66.230	6071.69	-366.61	491.10	965.08	40.2910903	-104.5719524	0.74	
6320.00	16.070	66.260	6162.99	-374.10	501.67	989.11	40.2911186	-104.5718659	0.05	
6414.00	15.810	88.320	6253.46	-376.58	507.29	1013.84	40.2911333	-104.5717770	6.41	
6509.00	14.310	118.620	6345.34	-368.46	502.04	1037.12	40.2911183	-104.5716938	8.34	
6603.00	18.350	152.400	6435.73	-347.74	483.31	1054.22	40.2910664	-104.5716332	10.79	
6698.00	27.360	163.250	6523.22	-312.11	449.07	1067.47	40.2909720	-104.5715870	10.43	
6792.00	36.670	163.500	6602.83	-263.00	401.37	1081.70	40.2908407	-104.5715378	9.91	
6887.00	44.550	164.180	6674.90	-201.97	342.02	1098.87	40.2906773	-104.5714784	8.31	
6981.00	54.080	166.180	6736.11	-131.40	273.17	1116.99	40.2904878	-104.5714161	10.26	
7075.00	60.960	169.370	6786.56	-52.47	195.72	1133.69	40.2902747	-104.5713591	7.86	
7170.00	68.100	175.780	6827.43	33.18	110.77	1144.61	40.2900412	-104.5713232	9.67	
7265.00	77.970	179.600	6855.12	123.58	20.10	1148.19	40.2897922	-104.5713137	11.08	
7359.00	82.900	176.150	6870.74	215.88	-72.48	1151.65	40.2895380	-104.5713048	6.37	
7403.34†	86.235	176.638	6874.94	259.92	-116.53	1154.42	40.2894170	-104.5712965	7.60	Cross 460' Hardline(460'FNL&1688',Sec.29)
7404.00†	86.284	176.645	6874.98	260.58	-117.19	1154.46	40.2894152	-104.5712964	7.60	Shallowest Perf MD Depth
7453.00	89.970	177.180	6876.58	309.42	-166.08	1157.10	40.2892810	-104.5712888	7.60	
7547.00	89.600	176.810	6876.93	403.17	-259.95	1162.03	40.2890232	-104.5712747	0.56	
7642.00	89.630	176.250	6877.57	497.97	-354.77	1167.78	40.2887627	-104.5712576	0.59	
7736.00	89.660	176.710	6878.16	591.78	-448.59	1173.55	40.2885050	-104.5712404	0.49	
7831.00	89.510	176.470	6878.84	686.57	-543.42	1179.20	40.2882446	-104.5712238	0.30	
7925.00	89.170	175.770	6879.93	780.40	-637.20	1185.56	40.2879870	-104.5712045	0.83	
8020.00	89.720	178.690	6880.85	875.11	-732.08	1190.15	40.2877265	-104.5711916	3.13	
8114.00	89.940	178.630	6881.13	968.62	-826.05	1192.35	40.2874685	-104.5711872	0.24	
8209.00	89.510	178.450	6881.58	1063.14	-921.02	1194.77	40.2872077	-104.5711821	0.49	
8303.00	89.600	179.760	6882.31	1156.57	-1015.00	1196.23	40.2869497	-104.5711804	1.40	
8398.00	90.000	179.670	6882.64	1250.89	-1110.00	1196.71	40.2866889	-104.5711823	0.43	
8492.00	89.850	179.620	6882.77	1344.22	-1204.00	1197.29	40.2864309	-104.5711837	0.17	



Actual Wellpath Report

JOHNSON C32-735 AWP

Page 4 of 7



REFERENCE WELLPATH IDENTIFICATION

Operator	NOBLE ENERGY, INC	Well	JOHNSON C32-735
Field	WELD COUNTY (NOBLE NAD 83 GRID)	API	05-123-49295
Facility	SEC.29-T04N-R64W	Wellbore	JOHNSON C32-735 AWB
Slot	SLOT#07 JOHNSON C32-735 (330'FNL & 2443'FWL,SEC.29)		

WELLPATH DATA (182 stations)

MD [ft]	Inclination [°]	Azimuth [°]	TVD [ft]	Vert Sect [ft]	North [ft]	East [ft]	Latitude	Longitude	DLS [°/100ft]	Comments
8587.00	88.980	179.070	6883.74	1438.60	-1298.98	1198.38	40.2861702	-104.5711834	1.08	
8682.00	89.780	178.060	6884.76	1533.11	-1393.95	1200.75	40.2859094	-104.5711784	1.36	
8776.00	90.430	179.780	6884.59	1626.58	-1487.93	1202.53	40.2856514	-104.5711756	1.96	
8871.00	89.380	179.430	6884.75	1720.91	-1582.92	1203.18	40.2853907	-104.5711768	1.17	
8965.00	90.000	178.910	6885.26	1814.33	-1676.91	1204.54	40.2851327	-104.5711755	0.86	
9060.00	89.780	179.950	6885.44	1908.70	-1771.90	1205.49	40.2848719	-104.5711756	1.12	
9154.00	89.480	179.650	6886.05	2002.00	-1865.90	1205.82	40.2846139	-104.5711780	0.45	
9248.00	89.290	178.480	6887.06	2095.43	-1959.88	1207.35	40.2843559	-104.5711760	1.26	
9343.00	89.600	179.290	6887.98	2189.90	-2054.86	1209.20	40.2840951	-104.5711730	0.91	
9437.00	89.510	179.710	6888.71	2283.25	-2148.85	1210.02	40.2838371	-104.5711736	0.46	
9532.00	89.720	179.750	6889.35	2377.56	-2243.85	1210.47	40.2835764	-104.5711755	0.23	
9626.00	89.750	179.030	6889.78	2470.94	-2337.84	1211.47	40.2833183	-104.5711755	0.77	
9720.00	89.510	179.620	6890.39	2564.34	-2431.83	1212.57	40.2830603	-104.5711750	0.68	
9910.00	89.290	179.530	6892.38	2753.01	-2621.82	1213.98	40.2825388	-104.5711771	0.13	
10004.00	90.000	179.650	6892.96	2846.35	-2715.81	1214.66	40.2822808	-104.5711782	0.77	
10099.00	89.140	179.390	6893.67	2940.69	-2810.81	1215.45	40.2820200	-104.5711789	0.95	
10193.00	88.860	179.370	6895.31	3034.06	-2904.79	1216.47	40.2817620	-104.5711788	0.30	
10287.00	90.120	179.510	6896.15	3127.43	-2998.77	1217.39	40.2815040	-104.5711791	1.35	
10382.00	90.220	179.890	6895.87	3221.75	-3093.77	1217.88	40.2812433	-104.5711808	0.41	
10476.00	90.280	179.670	6895.46	3315.05	-3187.77	1218.25	40.2809852	-104.5711831	0.24	
10571.00	89.780	179.750	6895.41	3409.37	-3282.77	1218.73	40.2807245	-104.5711849	0.53	
10665.00	89.880	179.760	6895.69	3502.68	-3376.77	1219.13	40.2804665	-104.5711870	0.11	
10760.00	90.060	180.100	6895.74	3596.95	-3471.77	1219.24	40.2802057	-104.5711902	0.40	
10854.00	90.060	179.940	6895.64	3690.21	-3565.77	1219.21	40.2799477	-104.5711938	0.17	
10949.00	90.060	179.900	6895.54	3784.48	-3660.77	1219.34	40.2796869	-104.5711969	0.04	
11043.00	90.000	179.720	6895.49	3877.78	-3754.77	1219.66	40.2794289	-104.5711993	0.20	
11138.00	89.970	179.350	6895.51	3972.13	-3849.76	1220.43	40.2791681	-104.5712001	0.39	
11232.00	89.940	179.350	6895.59	4065.52	-3943.76	1221.49	40.2789101	-104.5711998	0.03	
11326.00	89.880	179.660	6895.74	4158.88	-4037.75	1222.31	40.2786521	-104.5712004	0.34	
11421.00	89.910	179.810	6895.91	4253.19	-4132.75	1222.74	40.2783913	-104.5712024	0.16	
11515.00	89.970	179.980	6896.01	4346.47	-4226.75	1222.92	40.2781333	-104.5712053	0.19	
11609.00	90.150	180.110	6895.91	4439.72	-4320.75	1222.84	40.2778753	-104.5712091	0.24	
11799.00	90.650	179.600	6894.58	4628.29	-4510.75	1223.32	40.2773538	-104.5712145	0.38	
11893.00	90.310	180.150	6893.80	4721.57	-4604.74	1223.53	40.2770958	-104.5712173	0.69	
11987.00	90.310	179.690	6893.29	4814.85	-4698.74	1223.66	40.2768378	-104.5712204	0.49	
12082.00	89.540	179.430	6893.41	4909.19	-4793.74	1224.39	40.2765770	-104.5712213	0.86	
12176.00	89.850	178.950	6893.91	5002.61	-4887.73	1225.72	40.2763190	-104.5712201	0.61	
12270.00	90.030	178.800	6894.01	5096.08	-4981.71	1227.56	40.2760610	-104.5712170	0.25	
12365.00	90.980	179.830	6893.17	5190.47	-5076.69	1228.70	40.2758002	-104.5712165	1.47	
12460.00	90.520	179.340	6891.93	5284.80	-5171.68	1229.39	40.2755395	-104.5712176	0.71	
12555.00	90.370	179.260	6891.19	5379.19	-5266.67	1230.55	40.2752787	-104.5712170	0.18	
12649.00	90.550	179.690	6890.44	5472.55	-5360.67	1231.41	40.2750207	-104.5712175	0.50	
12743.00	90.650	179.620	6889.45	5565.88	-5454.66	1231.98	40.2747627	-104.5712190	0.13	
12838.00	90.400	179.560	6888.58	5660.21	-5549.65	1232.66	40.2745019	-104.5712201	0.27	
12932.00	90.280	179.330	6888.02	5753.58	-5643.65	1233.57	40.2742439	-104.5712204	0.28	



Actual Wellpath Report

JOHNSON C32-735 AWP

Page 5 of 7



REFERENCE WELLPATH IDENTIFICATION			
Operator	NOBLE ENERGY, INC	Well	JOHNSON C32-735
Field	WELD COUNTY (NOBLE NAD 83 GRID)	API	05-123-49295
Facility	SEC.29-T04N-R64W	Wellbore	JOHNSON C32-735 AWB
Slot	SLOT#07 JOHNSON C32-735 (330'FNL & 2443'FWL,SEC.29)		

WELLPATH DATA (182 stations)										
MD [ft]	Inclination [°]	Azimuth [°]	TVD [ft]	Vert Sect [ft]	North [ft]	East [ft]	Latitude	Longitude	DLS [°/100ft]	Comments
13026.00	89.690	179.210	6888.05	5846.98	-5737.64	1234.76	40.2739859	-104.5712196	0.64	
13121.00	90.340	179.860	6888.02	5941.33	-5832.63	1235.53	40.2737251	-104.5712204	0.97	
13215.00	90.220	179.620	6887.56	6034.65	-5926.63	1235.96	40.2734671	-104.5712224	0.29	
13310.00	89.850	179.410	6887.51	6129.00	-6021.63	1236.77	40.2732063	-104.5712231	0.45	
13404.00	90.060	179.150	6887.58	6222.40	-6115.62	1237.95	40.2729483	-104.5712224	0.36	
13499.00	90.180	179.190	6887.38	6316.82	-6210.61	1239.32	40.2726875	-104.5712210	0.13	
13593.00	89.720	178.760	6887.46	6410.27	-6304.60	1241.00	40.2724295	-104.5712185	0.67	
13687.00	89.820	178.590	6887.84	6503.78	-6398.57	1243.18	40.2721715	-104.5712143	0.21	
13782.00	90.030	178.580	6887.96	6598.30	-6493.54	1245.52	40.2719108	-104.5712094	0.22	
13876.00	90.400	177.830	6887.61	6691.89	-6587.49	1248.47	40.2716528	-104.5712024	0.89	
13971.00	89.880	178.760	6887.38	6786.45	-6682.45	1251.29	40.2713921	-104.5711958	1.12	
14065.00	90.220	179.960	6887.30	6879.84	-6776.44	1252.34	40.2711341	-104.5711956	1.33	
14159.00	90.250	179.480	6886.91	6973.15	-6870.44	1252.80	40.2708760	-104.5711975	0.51	
14254.00	90.120	179.940	6886.61	7067.47	-6965.44	1253.28	40.2706153	-104.5711993	0.50	
14348.00	90.090	179.620	6886.43	7160.77	-7059.44	1253.65	40.2703573	-104.5712015	0.34	
14443.00	90.120	180.180	6886.26	7255.05	-7154.44	1253.81	40.2700965	-104.5712045	0.59	
14537.00	90.120	180.000	6886.06	7348.29	-7248.44	1253.66	40.2698385	-104.5712086	0.19	
14631.00	89.630	179.710	6886.27	7441.58	-7342.43	1253.90	40.2695805	-104.5712112	0.61	
14725.00	89.510	178.950	6886.97	7534.98	-7436.42	1255.00	40.2693225	-104.5712108	0.82	
14820.00	89.780	179.790	6887.56	7629.35	-7531.42	1256.05	40.2690617	-104.5712107	0.93	
14914.00	89.820	179.290	6887.89	7722.71	-7625.41	1256.80	40.2688037	-104.5712115	0.53	
15009.00	89.880	179.710	6888.14	7817.06	-7720.41	1257.63	40.2685429	-104.5712121	0.45	
15103.00	89.600	178.840	6888.57	7910.46	-7814.40	1258.82	40.2682849	-104.5712113	0.97	
15198.00	89.570	179.160	6889.25	8004.91	-7909.38	1260.48	40.2680241	-104.5712090	0.34	
15293.00	89.690	179.210	6889.87	8099.32	-8004.37	1261.83	40.2677634	-104.5712077	0.14	
15388.00	89.780	179.230	6890.31	8193.73	-8099.36	1263.12	40.2675026	-104.5712066	0.10	
15482.00	89.780	178.870	6890.67	8287.17	-8193.35	1264.68	40.2672446	-104.5712046	0.38	
15576.00	89.850	178.870	6890.97	8380.65	-8287.33	1266.53	40.2669866	-104.5712015	0.07	
15671.00	89.720	179.030	6891.33	8475.10	-8382.31	1268.27	40.2667258	-104.5711988	0.22	
15765.00	89.970	180.350	6891.58	8568.42	-8476.31	1268.78	40.2664678	-104.5712005	1.43	
15860.00	89.660	179.670	6891.89	8662.68	-8571.31	1268.77	40.2662070	-104.5712041	0.79	
15954.00	89.570	179.310	6892.52	8756.04	-8665.30	1269.60	40.2659490	-104.5712046	0.39	
16049.00	89.600	179.650	6893.21	8850.39	-8760.29	1270.46	40.2656882	-104.5712051	0.36	
16143.00	89.780	179.780	6893.72	8943.71	-8854.29	1270.93	40.2654302	-104.5712070	0.24	
16237.00	89.970	179.930	6893.92	9037.00	-8948.29	1271.17	40.2651722	-104.5712096	0.26	
16331.00	89.940	179.570	6894.00	9130.32	-9042.29	1271.58	40.2649142	-104.5712117	0.38	
16426.00	90.180	179.500	6893.90	9224.66	-9137.29	1272.35	40.2646534	-104.5712125	0.26	
16520.00	90.000	179.790	6893.75	9318.00	-9231.28	1272.93	40.2643954	-104.5712139	0.36	
16615.00	90.030	179.530	6893.72	9412.32	-9326.28	1273.50	40.2641346	-104.5712155	0.28	
16709.00	90.060	179.500	6893.65	9505.68	-9420.28	1274.29	40.2638766	-104.5712162	0.05	
16803.00	90.280	179.380	6893.37	9599.05	-9514.27	1275.21	40.2636186	-104.5712164	0.27	
16898.00	90.090	179.300	6893.06	9693.44	-9609.27	1276.31	40.2633578	-104.5712160	0.22	
16993.00	90.060	179.450	6892.94	9787.82	-9704.26	1277.34	40.2630970	-104.5712159	0.16	
17087.00	91.050	179.690	6892.03	9881.16	-9798.25	1278.05	40.2628390	-104.5712169	1.08	
17181.00	90.000	180.080	6891.17	9974.44	-9892.25	1278.24	40.2625810	-104.5712198	1.19	



Actual Wellpath Report

JOHNSON C32-735 AWP

Page 6 of 7



REFERENCE WELLPATH IDENTIFICATION			
Operator	NOBLE ENERGY, INC	Well	JOHNSON C32-735
Field	WELD COUNTY (NOBLE NAD 83 GRID)	API	05-123-49295
Facility	SEC.29-T04N-R64W	Wellbore	JOHNSON C32-735 AWB
Slot	SLOT#07 JOHNSON C32-735 (330'FNL & 2443'FWL,SEC.29)		

WELLPATH DATA (182 stations) † = interpolated, ‡ = extrapolated station										
MD [ft]	Inclination [°]	Azimuth [°]	TVD [ft]	Vert Sect [ft]	North [ft]	East [ft]	Latitude	Longitude	DLS [°/100ft]	Comments
17257.00	90.060	179.750	6891.13	10049.86	-9968.25	1278.35	40.2623724	-104.5712222	0.44	Last BH MWD Survey(225'FSL&1635'FEL,Sec.29)
17322.00‡	90.060	179.750	6891.06	10114.38	-10033.25	1278.63	40.2621940	-104.5712236	0.00	Projection to Blt(160'FSL&1636'FEL,Sec.32)

TARGETS								
Name	TVD [ft]	North [ft]	East [ft]	Grid East [US ft]	Grid North [US ft]	Latitude	Longitude	Shape
JOHNSON C32 SECTION 29	-11.00	-211.02	-1373.24	3256543.16	1349537.99	40.2892300	-104.5803600	polygon
	2D Polygon: dimensions not calculated							
JOHNSON C32 SECTION 32	-11.00	-211.02	-1373.24	3256543.16	1349537.99	40.2892300	-104.5803600	polygon
	2D Polygon: dimensions not calculated							
JOHNSON C32-735 LP PLAN (460'FNL & 1659'FEL,SEC.29)	6876.75	-114.54	1184.50	3259100.78	1349634.47	40.2894216	-104.5711886	point
JOHNSON C32-735 BHL (200'FSL & 1656'FEL,SEC.32)	6890.00	-9991.98	1258.92	3259175.20	1339757.47	40.2623078	-104.5712927	point
JOHNSON C32 460'N HARDLINE	7089.00	-211.02	-1373.24	3256543.16	1349537.99	40.2892300	-104.5803600	polygon
	2D Polygon: dimensions not calculated							

WELLPATH COMPOSITION - Ref Wellbore: JOHNSON C32-735 AWB Ref Wellpath: JOHNSON C32-735 AWP					
Start MD [ft]	End MD [ft]	Positional Uncertainty Model	Log Name/Comment	Wellbore	Survey Date
0.00	1879.00	OWSG MWD rev2 (MS+IFR1)	13.5" Hole NaviTrak OWSG MWD rev2 (MS+IFR1) <181'-1879'>	JOHNSON C32-735 AWB	10/21/2022
1879.00	17322.00	OWSG MWD rev2 (MS+IFR1)	8.5" Hole ATC OWSG MWD rev2 (MS+IFR1) <1975'-17257'>	JOHNSON C32-735 AWB	10/24/2022

REFERENCE WELLPATH IDENTIFICATION			
Operator	NOBLE ENERGY, INC	Well	JOHNSON C32-735
Field	WELD COUNTY (NOBLE NAD 83 GRID)	API	05-123-49295
Facility	SEC.29-T04N-R64W	Wellbore	JOHNSON C32-735 AWB
Slot	SLOT#07 JOHNSON C32-735 (330'FNL & 2443'FWL,SEC.29)		

WELLPATH COMMENTS				
MD [ft]	Inclination [°]	Azimuth [°]	TVD [ft]	Comment
181.00	0.740	257.980	180.99	First BH MWD Survey
7403.34	86.235	176.638	6874.94	Cross 460' Hardline(460'FNL&1688',Sec.29)
7404.00	86.284	176.645	6874.98	Shallowest Perf MD Depth
17257.00	90.060	179.750	6891.13	Last BH MWD Survey(225'FSL&1635'FEL,Sec.29)
17322.00	90.060	179.750	6891.06	Projection to Blt(160'FSL&1636'FEL,Sec.32)