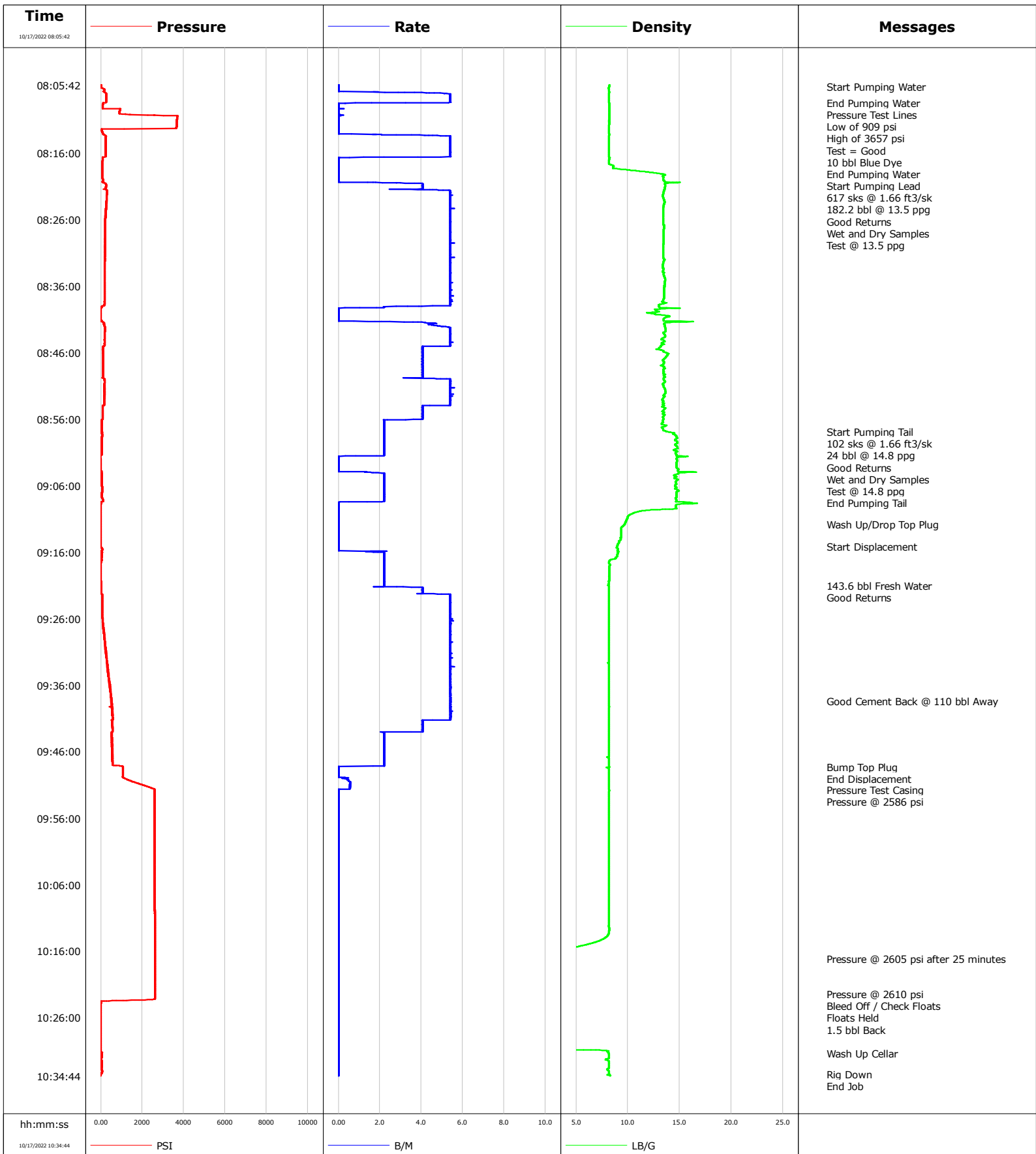


Well	Johnson C32-745	Client	Oxy
Field	DJ	SIR No.	EOXO-00295
Engineer	Matt Leiker	Job Type	Surface
Country	United States	Job Date	10-17-2022



				Customer			Job Number		
				Oxy			EOXO-00295		
Well		Location (legal)		Schlumberger Location			Job Start		
Johnson C32-745		NEW SEC 29 T4N R64W					Oct/17/2022		
Field		Formation Name/Type		Deviation	Bit Size		Well MD	Well TVD	
DJ				deg	in		ft 1934.0	1934.0	
County		State/Province		BHP	BHST	BHCT	Pore Press. Gradient		
Weld		Colorado		psi	115 degF	91 degF	lb/gal		
Well Master		API/UWI							
0065886826		05-123-49292							
Rig Name	Drilled For	Service Via		Casing/Liner					
H&P 517	Oil	Land		Depth, ft	Size, in	Weight, lb/ft	Grade	Thread	
				110.0	16.0	36.94	A-52A	8RD	
Offshore Zone	Well Class	Well Type		1934.0	9.6	36.0	J-55		
	Old	Workover							
Drilling Fluid Type		Max. Density	Plastic Viscosity	Tubing/Drill Pipe					
		lb/gal	cP	T/D	Depth, ft	Size, in	Weight, lb/ft	Grade	Thread
Service Line	Job Type				0.0				
Cementing	Surface				0.0				
Max. Allowed Tub. Press	Max. Allowed Ann. Press	WH Connection		Perforations/Open Hole					
psi	psi	Single Cement head		Top, ft	Bottom, ft	shot/ft	No. of Shots	Total Interval	
				ft	ft			ft	
				ft	ft			Diameter	
				ft	ft			in	
Service Instructions		Treat Down	Displacement	Packer Type	Packer Depth				
Pressure Test : 3500 psi Estimated BOC = 1904' ; Estimated TOC = 0' Cement Type Density = 13.5 ppg Class C Volume = 182.2 bbl ; Sacks = 617 Yield = 1.66 ft ³ /sk ; GPS = 8.86 14.8 ppg Class C Tail Volume = 24 bbl ; Sacks = 102 Yield = 1.33 ; GPS = 6.37 Water : Temp 60;Cl <500 ; pH 7 Cement to Surface = 33 bbl		Casing	143.6 bbl		ft				
		Tubing Vol.	Casing Vol.	Annular Vol.	Openhole Vol.				
		bbl	bbl	bbl	bbl				
Casing/Tubing Secured		1 Hole Vol. Circulated prior to Cement	Casing Tools			Squeeze Job			
<input checked="" type="checkbox"/>		<input checked="" type="checkbox"/>							
Lift Pressure		Shoe Type	Shoe Depth		Squeeze Type				
psi			ft						
Pipe Rotated		Pipe Reciprocated	Stage Tool Type			Tool Depth			
<input type="checkbox"/>		<input type="checkbox"/>				ft			
No. Centralizers		Top Plugs	Bottom Plugs	Stage Tool Depth			Tail Pipe Size		
				ft			in		
Cement Head Type		Collar Type			Tail Pipe Depth				
					ft				
Job Scheduled For		Arrived on Location	Leave Location	Collar Depth			Sqz. Total Vol.		
Oct/17/2022		Oct/17/2022	Oct/17/2022	ft			bbl		
Date	Time 24-hr clock	Treating Pressure PSI	Flow Rate B/M	Density LB/G	Volume BBL	Message			
10/17/2022	08:05:42	17	0.0	8.20	0.0	Started Acquisition			
10/17/2022	08:05:58	17	0.0	8.19	0.0	Start Pumping Water			
10/17/2022	08:08:26	100	0.8	8.20	8.5	End Pumping Water			
10/17/2022	08:09:24	919	0.0	8.19	8.5	Pressure Test Lines			
10/17/2022	08:09:26	919	0.0	8.19	8.5	Low of 909 psi			
10/17/2022	08:10:28	3693	0.0	8.19	8.5	High of 3657 psi			
10/17/2022	08:12:31	40	0.0	8.18	8.5	Test = Good			
10/17/2022	08:12:53	86	0.0	8.17	8.5	10 bbl Blue Dye			
10/17/2022	08:16:36	86	1.2	8.21	26.7	End Pumping Water			
10/17/2022	08:19:43	63	0.0	13.40	26.8	Start Pumping Lead			
10/17/2022	08:20:00	104	0.0	13.39	26.8	617 sks @ 1.66 ft ³ /sk			
10/17/2022	08:57:53	45	2.2	13.85	126.3	Start Pumping Tail			
10/17/2022	08:57:54	45	2.2	13.90	126.3	102 sks @ 1.66 ft ³ /sk			
10/17/2022	09:08:33	13	0.0	16.27	144.1	End Pumping Tail			
10/17/2022	09:11:50	-19	0.0	9.68	144.1	Wash Up/Drop Top Plug			
10/17/2022	09:15:08	-24	0.0	8.96	144.1	Start Displacement			
10/17/2022	09:21:02	13	2.2	8.17	155.5	143.6 bbl Fresh Water			
10/17/2022	09:38:21	526	5.4	8.18	247.2	Good Cement Back @ 110 bbl Away			
10/17/2022	09:48:17	1052	0.0	8.19	281.4	Bump Top Plug			
10/17/2022	09:48:18	1052	0.0	8.19	281.4	End Displacement			
10/17/2022	09:51:40	2590	0.0	8.18	282.4	Pressure Test Casing			

Well		Field		Job Start		Customer		Job Number	
Johnson C32-745		DJ		Oct/17/2022		Oxy		EOXO-00295	
Date	Time 24-hr clock	Treating Pressure PSI	Flow Rate B/M	Density LB/G	Volume BBL	Message			
10/17/2022	10:17:05	2604	0.0	0.61	282.4	Pressure @ 2605 psi after 25 minutes			
10/17/2022	10:22:27	2608	0.0	0.01	282.4	Pressure @ 2610 psi			
10/17/2022	10:23:41	4	0.0	0.01	282.4	Bleed Off / Check Floats			
10/17/2022	10:23:42	4	0.0	0.01	282.4	Floats Held			
10/17/2022	10:24:25	-5	0.0	0.01	282.4	1.5 bbl Back			
10/17/2022	10:31:21	36	0.0	8.14	282.4	Wash Up Cellar			
10/17/2022	10:34:30	-10	0.0	8.22	282.4	Rig Down			

Post Job Summary

Average Pump Rates, bbl/min				Volume of Fluid Injected, bbl			
Slurry	N2	Mud	Maximum Rate	Total Slurry	Mud	Spacer	N2
4.3			5.6	206.2	0.0	30.0	
Treating Pressure Summary, psi				Breakdown Fluid			
Maximum	Final	Average	Bump Plug to	Breakdown	Type	Volume	Density
3712	0	886				bbl	lb/gal
Avg. N2 Percent	Designed Slurry Volume	Displacement	Mix Water Temp	Cement Circulated to Surface?	Volume		
%	206.2 bbl	143.6 bbl	60 degF	<input type="checkbox"/>	bbl		
Customer or Authorized Representative				Schlumberger Supervisor	Washed Thru Perfs	To	
Charles Collver				Matt Leiker	<input type="checkbox"/>	ft	
					Circulation Lost	Job Completed	
					<input type="checkbox"/>	-	
					-	-	