

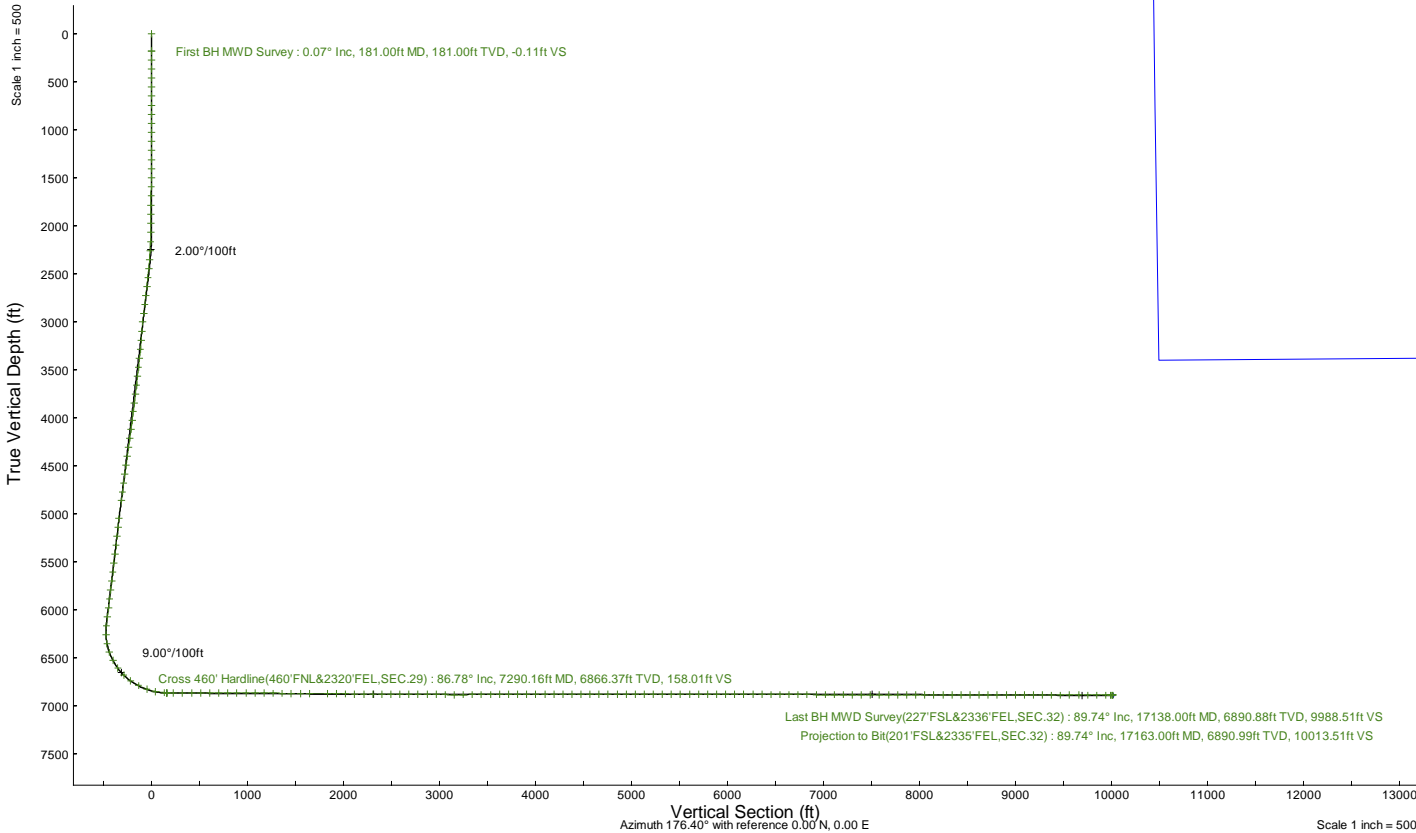
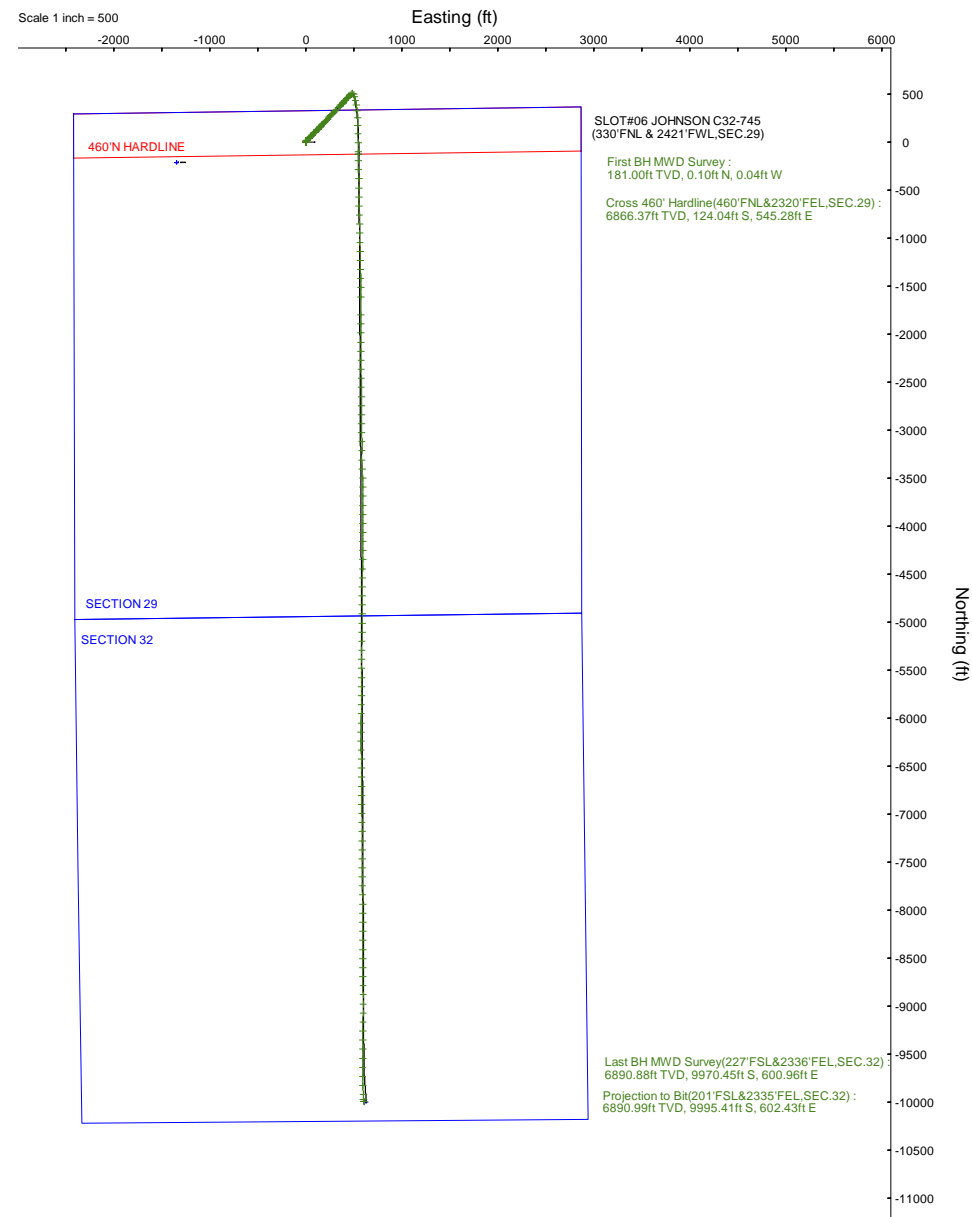
NOBLE ENERGY, INC

Location: COLORADO Slot: SLOT#06 JOHNSON C32-745 (330'FNL & 2421'FWL,SEC.29)
 Field: WELD COUNTY (NOBLE NAD 83 GRID) Well: JOHNSON C32-745
 Facility: SEC.29-T04N-R64W Wellbore: JOHNSON C32-745 PWB

Plot reference wellpath is JOHNSON C32-745 (REV-A.0) PWP	Grid System: NAD83 / Lambert Colorado SP, Northern Zone (501), US feet
True vertical depths are referenced to (4774'GL+30'KB@4804'RKB) (RKB)	North Reference: Grid north
Reference wellpath measured depths are referenced to (4774'GL+30'KB@4804'RKB) (RKB)	Scale: True distance
(4774'GL+30'KB@4804'RKB) (RKB) to Mean Sea Level: 4804 feet	Coordinates are in feet referenced to Slot
Mean Sea Level to Ground level (At Slot: SLOT#06 JOHNSON C32-745 (330'FNL & 2421'FWL,SEC.29)): 0 feet	Depths are in feet
Offset wellpath MDs are referenced to each path's default MD datum	Created by: guenaler on 2022-10-24; Database: WA_Denver

Location Information

Facility Name		Grid East (US ft)	Grid North (US ft)	Latitude	Longitude	
SEC.29-T04N-R64W		3255543.160	1349537.995	40°17'21.2280"N	104°34'49.2960"W	
Slot	Local N (ft)	Local E (ft)	Grid East (US ft)	Grid North (US ft)	Latitude	Longitude
SLOT#06 JOHNSON C32-745 (330'FNL & 2421'FWL,SEC.29)	210.78	1350.92	3257894.018	1349748.768	40°17'23.1720"N	104°34'31.8360"W
(4774'GL+30'KB@4804'RKB) (RKB) to Ground level (At Slot: SLOT#06 JOHNSON C32-745 (330'FNL & 2421'FWL,SEC.29))					4804ft	
Mean Sea Level to Ground level (At Slot: SLOT#06 JOHNSON C32-745 (330'FNL & 2421'FWL,SEC.29))					0ft	
(4774'GL+30'KB@4804'RKB) (RKB) to Mean Sea Level					4804ft	





Actual Wellpath Report

JOHNSON C32-745 AWP

Page 1 of 7



REFERENCE WELLPATH IDENTIFICATION

Operator	NOBLE ENERGY, INC	Well	JOHNSON C32-745
Field	WELD COUNTY (NOBLE NAD 83 GRID)	API	05-123-49292
Facility	SEC.29-T04N-R64W	Wellbore	JOHNSON C32-745 AWB
Slot	SLOT#06 JOHNSON C32-745 (330'FNL & 2421'FWL,SEC.29)		

REPORT SETUP INFORMATION

Projection System	NAD83 / Lambert Colorado SP, Northern Zone (501), US feet	Software System	WellArchitect® 6.0
North Reference	Grid	User	Guenaler
Scale	0.999957	Report Generated	10/24/2022 at 4:00:28 PM
Convergence at slot	0.60° East	Database	WA_Denver

WELLPATH LOCATION

	Local coordinates		Grid coordinates		Geographic coordinates	
	North[ft]	East[ft]	Easting[US ft]	Northing[US ft]	Latitude	Longitude
Slot Location	210.78	1350.92	3257894.02	1349748.77	40.2897700°	-104.5755100°
Facility Reference Pt			3256543.16	1349538.00	40.2892300°	-104.5803600°
Field Reference Pt			3000000.00	4454105.15	48.7761986°	-105.5000000°

WELLPATH DATUM

Calculation method	Minimum curvature	(4774'GL+30'KB@4804'RKB) (RKB) to Facility Vertical Datum	4804.00ft
Horizontal Reference Pt	Slot	(4774'GL+30'KB@4804'RKB) (RKB) to Mean Sea Level	4804.00ft
Vertical Reference Pt	(4774'GL+30'KB@4804'RKB) (RKB)	(4774'GL+30'KB@4804'RKB) (RKB) to Ground Level at Slot (SLOT#06 JOHNSON C32-745 (330'FNL & 2421'FWL,SEC.29))	4804.00ft
MD Reference Pt	(4774'GL+30'KB@4804'RKB) (RKB)	Section Origin	N 0.00, E 0.00 ft
Field Vertical Reference	Mean Sea Level	Section Azimuth	176.40°



Actual Wellpath Report

JOHNSON C32-745 AWP

Page 2 of 7



REFERENCE WELLPATH IDENTIFICATION			
Operator	NOBLE ENERGY, INC	Well	JOHNSON C32-745
Field	WELD COUNTY (NOBLE NAD 83 GRID)	API	05-123-49292
Facility	SEC.29-T04N-R64W	Wellbore	JOHNSON C32-745 AWB
Slot	SLOT#06 JOHNSON C32-745 (330'FNL & 2421'FWL,SEC.29)		

WELLPATH DATA (183 stations)										
MD [ft]	Inclination [°]	Azimuth [°]	TVD [ft]	Vert Sect [ft]	North [ft]	East [ft]	Latitude	Longitude	DLS [°/100ft]	Comments
0.00	0.000	339.380	0.00	0.00	0.00	0.00	40.2897700	-104.5755100	0.00	
181.00	0.070	339.380	181.00	-0.11	0.10	-0.04	40.2897703	-104.5755101	0.04	First BH MWD Survey
272.00	0.130	9.550	272.00	-0.26	0.26	-0.04	40.2897707	-104.5755101	0.09	
366.00	0.440	64.060	366.00	-0.50	0.52	0.30	40.2897714	-104.5755089	0.40	
461.00	0.300	84.680	461.00	-0.65	0.70	0.88	40.2897719	-104.5755068	0.20	
555.00	0.310	55.630	555.00	-0.78	0.87	1.33	40.2897723	-104.5755052	0.16	
650.00	0.200	59.240	649.99	-0.99	1.10	1.69	40.2897730	-104.5755039	0.12	
745.00	0.180	133.920	744.99	-0.96	1.08	1.94	40.2897729	-104.5755030	0.24	
839.00	0.210	194.260	838.99	-0.68	0.81	2.00	40.2897722	-104.5755028	0.21	
934.00	0.150	281.220	933.99	-0.55	0.67	1.84	40.2897718	-104.5755034	0.26	
1028.00	0.180	347.020	1027.99	-0.73	0.83	1.68	40.2897722	-104.5755039	0.19	
1122.00	0.200	334.320	1121.99	-1.03	1.13	1.58	40.2897730	-104.5755043	0.05	
1217.00	0.440	359.020	1216.99	-1.54	1.64	1.50	40.2897745	-104.5755046	0.29	
1312.00	0.490	325.500	1311.99	-2.26	2.34	1.26	40.2897764	-104.5755054	0.29	
1407.00	0.490	341.060	1406.98	-3.00	3.06	0.90	40.2897784	-104.5755067	0.14	
1501.00	0.690	345.700	1500.98	-3.94	3.99	0.63	40.2897809	-104.5755076	0.22	
1595.00	0.720	357.200	1594.97	-5.09	5.13	0.46	40.2897841	-104.5755082	0.15	
1690.00	0.540	300.970	1689.97	-5.94	5.95	0.05	40.2897863	-104.5755096	0.65	
1785.00	0.540	302.140	1784.96	-6.45	6.42	-0.71	40.2897876	-104.5755123	0.01	
1879.00	0.650	255.050	1878.96	-6.61	6.52	-1.60	40.2897879	-104.5755155	0.52	
1976.00	0.620	310.100	1975.95	-6.86	6.72	-2.54	40.2897885	-104.5755188	0.61	
2070.00	2.450	43.850	2069.92	-8.57	8.49	-1.53	40.2897934	-104.5755152	2.73	
2165.00	3.990	45.190	2164.77	-12.12	12.29	2.22	40.2898037	-104.5755016	1.62	
2259.00	5.010	45.500	2258.48	-16.96	17.47	7.47	40.2898177	-104.5754826	1.09	
2353.00	5.730	45.610	2352.07	-22.72	23.63	13.75	40.2898345	-104.5754598	0.77	
2448.00	8.240	45.610	2446.35	-30.27	31.71	22.00	40.2898564	-104.5754300	2.64	
2542.00	9.390	45.740	2539.24	-39.66	41.77	32.31	40.2898837	-104.5753926	1.22	
2637.00	8.750	45.210	2633.05	-49.47	52.27	42.99	40.2899122	-104.5753540	0.68	
2731.00	10.760	44.140	2725.69	-60.08	63.61	54.17	40.2899430	-104.5753135	2.15	
2825.00	9.480	41.960	2818.23	-71.40	75.66	65.46	40.2899758	-104.5752725	1.42	
2920.00	10.150	43.310	2911.84	-82.60	87.57	76.43	40.2900082	-104.5752328	0.75	
3014.00	9.300	41.260	3004.48	-93.64	99.31	87.12	40.2900401	-104.5751940	0.98	
3109.00	7.500	46.590	3098.46	-103.06	109.34	96.69	40.2900673	-104.5751593	2.06	
3203.00	6.340	46.810	3191.78	-110.29	117.11	104.93	40.2900884	-104.5751295	1.23	
3298.00	8.680	46.250	3285.95	-118.26	125.66	113.93	40.2901116	-104.5750969	2.46	
3393.00	9.260	45.130	3379.79	-127.92	136.01	124.53	40.2901397	-104.5750586	0.64	
3487.00	9.400	45.190	3472.55	-137.97	146.75	135.34	40.2901689	-104.5750194	0.15	
3582.00	9.310	44.670	3566.29	-148.20	157.68	146.24	40.2901986	-104.5749799	0.13	
3676.00	9.470	44.460	3659.03	-158.43	168.61	157.00	40.2902283	-104.5749409	0.17	
3770.00	10.260	43.550	3751.64	-169.29	180.20	168.19	40.2902598	-104.5749004	0.86	
3865.00	10.280	43.040	3845.11	-180.86	192.52	179.80	40.2902933	-104.5748583	0.10	
3959.00	10.130	43.520	3937.63	-192.25	204.65	191.22	40.2903262	-104.5748170	0.18	
4053.00	11.240	43.040	4029.99	-204.16	217.34	203.16	40.2903607	-104.5747737	1.18	
4148.00	11.240	43.210	4123.17	-216.86	230.85	215.82	40.2903975	-104.5747278	0.03	
4242.00	11.210	42.880	4215.37	-229.42	244.23	228.31	40.2904338	-104.5746825	0.08	



Actual Wellpath Report

JOHNSON C32-745 AWP

Page 3 of 7



REFERENCE WELLPATH IDENTIFICATION			
Operator	NOBLE ENERGY, INC	Well	JOHNSON C32-745
Field	WELD COUNTY (NOBLE NAD 83 GRID)	API	05-123-49292
Facility	SEC.29-T04N-R64W	Wellbore	JOHNSON C32-745 AWB
Slot	SLOT#06 JOHNSON C32-745 (330'FNL & 2421'FWL,SEC.29)		

WELLPATH DATA (183 stations) † = interpolated, ‡ = extrapolated station										
MD [ft]	Inclination [°]	Azimuth [°]	TVD [ft]	Vert Sect [ft]	North [ft]	East [ft]	Latitude	Longitude	DLS [°/100ft]	Comments
4337.00	11.370	43.020	4308.54	-242.21	257.84	240.98	40.2904708	-104.5746366	0.17	
4432.00	11.300	43.110	4401.68	-255.02	271.48	253.73	40.2905079	-104.5745904	0.08	
4526.00	11.210	43.110	4493.88	-267.60	284.87	266.27	40.2905443	-104.5745449	0.10	
4621.00	11.120	43.150	4587.08	-280.21	298.30	278.85	40.2905808	-104.5744994	0.10	
4715.00	11.110	43.450	4679.31	-292.60	311.49	291.28	40.2906166	-104.5744543	0.06	
4809.00	11.350	44.160	4771.51	-304.99	324.70	303.95	40.2906525	-104.5744084	0.29	
4903.00	11.170	43.380	4863.70	-317.42	337.95	316.65	40.2906885	-104.5743624	0.25	
5093.00	9.530	42.650	5050.61	-340.85	362.90	339.94	40.2907563	-104.5742779	0.87	
5187.00	8.910	46.770	5143.39	-350.88	373.61	350.52	40.2907854	-104.5742396	0.96	
5281.00	9.790	43.090	5236.14	-361.00	384.43	361.28	40.2908148	-104.5742006	1.13	
5376.00	9.630	43.530	5329.78	-371.95	396.09	372.27	40.2908465	-104.5741608	0.19	
5470.00	10.030	43.060	5422.40	-382.92	407.77	383.28	40.2908783	-104.5741209	0.43	
5565.00	9.710	42.170	5516.00	-394.18	419.75	394.31	40.2909108	-104.5740810	0.37	
5659.00	9.750	42.500	5608.64	-405.23	431.50	405.00	40.2909428	-104.5740422	0.07	
5754.00	9.820	42.340	5702.26	-416.44	443.42	415.90	40.2909752	-104.5740027	0.08	
5849.00	10.000	42.250	5795.85	-427.82	455.51	426.90	40.2910081	-104.5739628	0.19	
5943.00	9.800	42.600	5888.45	-439.04	467.44	437.80	40.2910405	-104.5739233	0.22	
6037.00	9.920	42.490	5981.06	-450.20	479.30	448.68	40.2910727	-104.5738838	0.13	
6131.00	9.930	42.380	6073.65	-461.45	491.26	459.62	40.2911052	-104.5738442	0.02	
6226.00	9.900	45.030	6167.23	-472.54	503.08	470.92	40.2911374	-104.5738032	0.48	
6320.00	9.950	98.510	6260.01	-476.18	507.60	484.69	40.2911494	-104.5737537	9.46	
6414.00	12.140	148.720	6352.47	-465.70	497.92	497.89	40.2911224	-104.5737068	10.14	
6509.00	19.600	165.910	6443.83	-441.14	473.89	506.97	40.2910562	-104.5736751	9.20	
6603.00	28.540	169.110	6529.57	-403.28	436.47	515.07	40.2909533	-104.5736475	9.61	
6698.00	36.290	170.770	6609.71	-352.72	386.35	523.88	40.2908155	-104.5736178	8.21	
6792.00	45.350	172.610	6680.78	-291.54	325.61	532.66	40.2906485	-104.5735886	9.72	
6887.00	54.540	177.050	6741.86	-218.96	253.28	539.01	40.2904498	-104.5735685	10.31	
6981.00	62.860	179.650	6790.66	-138.77	173.07	541.24	40.2902296	-104.5735635	9.16	
7076.00	70.490	179.150	6828.25	-51.72	85.91	542.16	40.2899903	-104.5735635	8.05	
7170.00	79.450	179.170	6852.60	38.87	-4.77	543.49	40.2897413	-104.5735621	9.53	
7265.00	85.840	179.120	6864.75	132.93	-98.93	544.90	40.2894828	-104.5735606	6.73	
7290.16†	86.779	179.163	6866.37	158.01	-124.04	545.28	40.2894139	-104.5735602	3.74	Cross 460' Hardline(460'FNL&2320'FEL,SEC.29)
7292.00†	86.848	179.166	6866.48	159.85	-125.87	545.30	40.2894089	-104.5735602	3.74	Shallowest MD for Perfs
7359.00	89.350	179.280	6868.70	226.72	-192.83	546.21	40.2892251	-104.5735594	3.74	
7453.00	89.540	178.600	6869.61	320.63	-286.81	547.95	40.2889671	-104.5735567	0.75	
7548.00	90.770	178.620	6869.35	415.55	-381.77	550.25	40.2887063	-104.5735520	1.29	
7642.00	89.940	180.070	6868.77	509.42	-475.76	551.33	40.2884483	-104.5735517	1.78	
7737.00	89.970	178.810	6868.84	604.29	-570.76	552.26	40.2881876	-104.5735519	1.33	
7831.00	90.120	178.950	6868.77	698.20	-664.74	554.09	40.2879295	-104.5735488	0.22	
7926.00	89.850	178.810	6868.80	793.11	-759.72	555.95	40.2876688	-104.5735457	0.32	
8020.00	89.630	178.400	6869.22	887.04	-853.69	558.24	40.2874108	-104.5735410	0.49	
8115.00	90.620	179.480	6869.01	981.94	-948.67	560.00	40.2871500	-104.5735383	1.54	
8209.00	89.290	178.590	6869.09	1075.84	-1042.66	561.58	40.2868920	-104.5735362	1.70	
8304.00	89.750	178.950	6869.88	1170.76	-1137.63	563.62	40.2866313	-104.5735324	0.61	
8398.00	89.540	178.120	6870.47	1264.69	-1231.60	566.02	40.2863733	-104.5735273	0.91	

REFERENCE WELLPATH IDENTIFICATION

Operator	NOBLE ENERGY, INC	Well	JOHNSON C32-745
Field	WELD COUNTY (NOBLE NAD 83 GRID)	API	05-123-49292
Facility	SEC.29-T04N-R64W	Wellbore	JOHNSON C32-745 AWB
Slot	SLOT#06 JOHNSON C32-745 (330'FNL & 2421'FWL,SEC.29)		

WELLPATH DATA (183 stations)

MD [ft]	Inclination [°]	Azimuth [°]	TVD [ft]	Vert Sect [ft]	North [ft]	East [ft]	Latitude	Longitude	DLS [°/100ft]	Comments
8493.00	89.260	179.100	6871.46	1359.61	-1326.56	568.33	40.2861126	-104.5735226	1.07	
8587.00	89.400	179.410	6872.56	1453.49	-1420.55	569.55	40.2858546	-104.5735217	0.36	
8682.00	89.280	180.020	6873.66	1548.32	-1515.54	570.02	40.2855938	-104.5735236	0.65	
8776.00	90.330	179.300	6873.98	1642.17	-1609.54	570.58	40.2853358	-104.5735251	1.35	
8966.00	89.130	179.550	6874.87	1831.90	-1799.52	572.49	40.2848143	-104.5735254	0.65	
9060.00	89.220	179.580	6876.22	1925.75	-1893.51	573.20	40.2845563	-104.5735264	0.10	
9155.00	89.130	179.890	6877.59	2020.58	-1988.50	573.64	40.2842955	-104.5735284	0.34	
9249.00	89.130	179.680	6879.02	2114.40	-2082.49	573.99	40.2840375	-104.5735306	0.22	
9343.00	89.430	179.660	6880.20	2208.24	-2176.48	574.53	40.2837795	-104.5735322	0.32	
9438.00	89.400	179.830	6881.17	2303.07	-2271.47	574.96	40.2835188	-104.5735342	0.18	
9532.00	90.020	179.720	6881.65	2396.91	-2365.47	575.32	40.2832608	-104.5735364	0.67	
9627.00	90.140	179.840	6881.51	2491.74	-2460.47	575.69	40.2830000	-104.5735387	0.18	
9721.00	90.140	179.890	6881.28	2585.57	-2554.47	575.91	40.2827420	-104.5735414	0.05	
9816.00	89.370	179.250	6881.69	2680.43	-2649.46	576.62	40.2824812	-104.5735424	1.05	
9910.00	89.900	179.380	6882.29	2774.30	-2743.45	577.75	40.2822232	-104.5735419	0.58	
10005.00	89.990	179.570	6882.38	2869.16	-2838.45	578.62	40.2819624	-104.5735423	0.22	
10099.00	89.900	179.950	6882.47	2963.00	-2932.45	579.01	40.2817044	-104.5735444	0.42	
10194.00	87.950	177.960	6884.25	3057.88	-3027.41	580.74	40.2814437	-104.5735418	2.93	
10288.00	90.110	179.390	6885.84	3151.79	-3121.36	582.92	40.2811858	-104.5735375	2.76	
10382.00	90.790	181.280	6885.11	3245.56	-3215.35	582.37	40.2809278	-104.5735430	2.14	
10477.00	90.110	179.160	6884.36	3340.34	-3310.34	582.00	40.2806671	-104.5735479	2.34	
10571.00	90.140	177.190	6884.15	3434.29	-3404.29	585.00	40.2804091	-104.5735407	2.10	
10666.00	90.260	176.360	6883.82	3529.29	-3499.14	590.34	40.2801486	-104.5735251	0.88	
10760.00	90.450	181.290	6883.24	3623.17	-3593.09	592.27	40.2798907	-104.5735217	5.25	
10855.00	90.360	180.150	6882.57	3717.90	-3688.07	591.07	40.2796300	-104.5735295	1.20	
10950.00	90.080	180.010	6882.20	3812.70	-3783.07	590.94	40.2793693	-104.5735335	0.33	
11044.00	90.020	178.620	6882.12	3906.58	-3877.06	592.06	40.2791113	-104.5735330	1.48	
11138.00	89.960	179.500	6882.14	4000.47	-3971.05	593.61	40.2788532	-104.5735310	0.94	
11233.00	89.930	180.830	6882.23	4095.27	-4066.05	593.33	40.2785925	-104.5735356	1.40	
11327.00	89.890	180.630	6882.38	4189.00	-4160.04	592.13	40.2783345	-104.5735434	0.22	
11421.00	89.990	180.510	6882.48	4282.75	-4254.04	591.20	40.2780766	-104.5735502	0.17	
11515.00	89.890	180.660	6882.57	4376.50	-4348.03	590.24	40.2778186	-104.5735572	0.19	
11610.00	89.990	180.680	6882.67	4471.24	-4443.02	589.13	40.2775579	-104.5735647	0.11	
11705.00	89.890	180.510	6882.77	4565.98	-4538.02	588.14	40.2772972	-104.5735718	0.21	
11799.00	89.830	180.550	6883.00	4659.74	-4632.01	587.27	40.2770392	-104.5735785	0.08	
11893.00	89.990	180.290	6883.15	4753.51	-4726.01	586.58	40.2767812	-104.5735845	0.32	
11988.00	90.020	180.450	6883.14	4848.28	-4821.01	585.97	40.2765205	-104.5735902	0.17	
12082.00	90.050	180.500	6883.08	4942.04	-4915.01	585.19	40.2762625	-104.5735965	0.06	
12176.00	89.990	180.530	6883.05	5035.80	-5009.00	584.35	40.2760045	-104.5736031	0.07	
12271.00	89.680	180.410	6883.32	5130.56	-5104.00	583.57	40.2757438	-104.5736094	0.35	
12366.00	90.290	180.720	6883.35	5225.31	-5198.99	582.63	40.2754831	-104.5736163	0.72	
12460.00	90.390	180.630	6882.79	5319.05	-5292.99	581.52	40.2752251	-104.5736238	0.14	
12555.00	90.140	180.640	6882.35	5413.79	-5387.98	580.47	40.2749644	-104.5736312	0.26	
12649.00	90.110	180.450	6882.15	5507.54	-5481.97	579.58	40.2747064	-104.5736379	0.20	
12744.00	90.420	180.450	6881.71	5602.30	-5576.97	578.83	40.2744457	-104.5736441	0.33	

REFERENCE WELLPATH IDENTIFICATION

Operator	NOBLE ENERGY, INC	Well	JOHNSON C32-745
Field	WELD COUNTY (NOBLE NAD 83 GRID)	API	05-123-49292
Facility	SEC.29-T04N-R64W	Wellbore	JOHNSON C32-745 AWB
Slot	SLOT#06 JOHNSON C32-745 (330'FNL & 2421'FWL,SEC.29)		

WELLPATH DATA (183 stations)

MD [ft]	Inclination [°]	Azimuth [°]	TVD [ft]	Vert Sect [ft]	North [ft]	East [ft]	Latitude	Longitude	DLS [°/100ft]	Comments
12838.00	89.890	180.550	6881.45	5696.06	-5670.97	578.01	40.2741877	-104.5736506	0.57	
12932.00	89.800	180.350	6881.71	5789.83	-5764.96	577.27	40.2739298	-104.5736567	0.23	
13027.00	90.080	180.560	6881.81	5884.59	-5859.96	576.52	40.2736690	-104.5736630	0.37	
13121.00	89.830	180.420	6881.88	5978.35	-5953.96	575.71	40.2734111	-104.5736694	0.30	
13216.00	90.050	180.470	6881.98	6073.11	-6048.95	574.98	40.2731503	-104.5736756	0.24	
13310.00	89.990	180.540	6881.95	6166.87	-6142.95	574.15	40.2728923	-104.5736821	0.10	
13405.00	89.740	180.400	6882.17	6261.63	-6237.95	573.37	40.2726316	-104.5736884	0.30	
13499.00	89.160	177.490	6883.07	6355.52	-6331.91	575.10	40.2723736	-104.5736857	3.16	
13593.00	89.860	179.350	6883.88	6449.46	-6425.87	577.69	40.2721157	-104.5736800	2.11	
13688.00	89.890	179.620	6884.09	6544.32	-6520.87	578.54	40.2718549	-104.5736805	0.29	
13782.00	89.920	179.640	6884.24	6638.17	-6614.86	579.15	40.2715969	-104.5736818	0.04	
13877.00	89.990	179.720	6884.32	6733.02	-6709.86	579.68	40.2713361	-104.5736835	0.11	
13971.00	89.890	179.470	6884.41	6826.87	-6803.86	580.35	40.2710781	-104.5736846	0.29	
14066.00	89.960	179.540	6884.54	6921.73	-6898.86	581.17	40.2708173	-104.5736852	0.10	
14160.00	89.680	179.420	6884.83	7015.59	-6992.85	582.02	40.2705593	-104.5736857	0.32	
14254.00	89.830	179.510	6885.24	7109.46	-7086.85	582.90	40.2703013	-104.5736861	0.19	
14349.00	89.890	179.320	6885.47	7204.33	-7181.84	583.87	40.2700405	-104.5736861	0.21	
14443.00	89.960	179.610	6885.59	7298.19	-7275.84	584.74	40.2697825	-104.5736865	0.32	
14537.00	89.960	179.590	6885.66	7392.05	-7369.84	585.40	40.2695245	-104.5736877	0.02	
14632.00	89.920	179.680	6885.76	7486.89	-7464.83	586.01	40.2692637	-104.5736891	0.10	
14726.00	89.890	179.540	6885.91	7580.75	-7558.83	586.65	40.2690057	-104.5736903	0.15	
14820.00	89.890	179.550	6886.09	7674.61	-7652.83	587.39	40.2687476	-104.5736911	0.01	
14914.00	89.770	179.460	6886.37	7768.47	-7746.82	588.20	40.2684896	-104.5736917	0.16	
15009.00	89.860	179.400	6886.68	7863.33	-7841.82	589.15	40.2682288	-104.5736919	0.11	
15104.00	89.890	179.550	6886.89	7958.20	-7936.81	590.02	40.2679681	-104.5736924	0.16	
15199.00	89.800	179.380	6887.14	8053.06	-8031.81	590.91	40.2677073	-104.5736927	0.20	
15293.00	90.020	179.630	6887.29	8146.92	-8125.81	591.72	40.2674493	-104.5736933	0.35	
15388.00	89.800	179.640	6887.44	8241.77	-8220.80	592.32	40.2671885	-104.5736947	0.23	
15482.00	89.710	179.660	6887.84	8335.62	-8314.80	592.90	40.2669305	-104.5736962	0.10	
15577.00	89.740	179.640	6888.30	8430.47	-8409.80	593.48	40.2666697	-104.5736977	0.04	
15671.00	90.540	179.770	6888.07	8524.31	-8503.80	593.96	40.2664117	-104.5736994	0.86	
15766.00	89.860	179.900	6887.74	8619.14	-8598.80	594.24	40.2661509	-104.5737020	0.73	
15860.00	89.860	179.790	6887.97	8712.97	-8692.79	594.49	40.2658929	-104.5737046	0.12	
15955.00	89.920	179.570	6888.15	8807.81	-8787.79	595.02	40.2656321	-104.5737063	0.24	
16049.00	89.770	179.580	6888.40	8901.67	-8881.79	595.72	40.2653741	-104.5737073	0.16	
16144.00	89.960	179.900	6888.63	8996.51	-8976.79	596.15	40.2651134	-104.5737093	0.39	
16238.00	89.190	180.340	6889.32	9090.30	-9070.78	595.95	40.2648554	-104.5737135	0.94	
16332.00	90.050	180.940	6889.95	9184.04	-9164.78	594.90	40.2645974	-104.5737208	1.12	
16427.00	89.860	180.820	6890.02	9278.75	-9259.76	593.44	40.2643367	-104.5737296	0.24	
16521.00	89.710	180.600	6890.37	9372.49	-9353.76	592.28	40.2640788	-104.5737373	0.28	
16615.00	90.110	180.470	6890.52	9466.24	-9447.75	591.40	40.2638208	-104.5737440	0.45	
16710.00	90.350	180.980	6890.14	9560.97	-9542.74	590.20	40.2635601	-104.5737518	0.59	
16804.00	89.800	180.160	6890.02	9654.72	-9636.74	589.26	40.2633021	-104.5737587	1.05	
16898.00	89.830	179.220	6890.32	9748.57	-9730.73	589.77	40.2630441	-104.5737604	1.00	
16993.00	89.780	177.080	6890.64	9843.52	-9825.68	592.84	40.2627834	-104.5737529	2.25	

REFERENCE WELLPATH IDENTIFICATION			
Operator	NOBLE ENERGY, INC	Well	JOHNSON C32-745
Field	WELD COUNTY (NOBLE NAD 83 GRID)	API	05-123-49292
Facility	SEC.29-T04N-R64W	Wellbore	JOHNSON C32-745 AWB
Slot	SLOT#06 JOHNSON C32-745 (330'FNL & 2421'FWL,SEC.29)		

WELLPATH DATA (183 stations) † = interpolated, ‡ = extrapolated station										
MD [ft]	Inclination [°]	Azimuth [°]	TVD [ft]	Vert Sect [ft]	North [ft]	East [ft]	Latitude	Longitude	DLS [°/100ft]	Comments
17087.00	90.050	176.650	6890.78	9937.51	-9919.54	597.98	40.2625256	-104.5737380	0.54	
17138.00	89.740	176.640	6890.88	9988.51	-9970.45	600.96	40.2623858	-104.5737293	0.61	Last BH MWD Survey(227'FSL&2336'FEL,SEC.32)
17163.00‡	89.740	176.640	6890.99	10013.51	-9995.41	602.43	40.2623173	-104.5737249	0.00	Projection to Bit(201'FSL&2335'FEL,SEC.32)

TARGETS								
Name	TVD [ft]	North [ft]	East [ft]	Grid East [US ft]	Grid North [US ft]	Latitude	Longitude	Shape
JOHNSON C32 SECTION 29	-12.00	-210.78	-1350.92	3256543.16	1349537.99	40.2892300	-104.5803600	polygon
2D Polygon: dimensions not calculated								
JOHNSON C32 SECTION 32	-12.00	-210.78	-1350.92	3256543.16	1349537.99	40.2892300	-104.5803600	polygon
2D Polygon: dimensions not calculated								
JOHNSON C32-745 LP PLAN (460'FNL & 2315'FEL,SEC.29)	6868.50	-123.04	551.44	3258445.43	1349625.73	40.2894165	-104.5735381	point
JOHNSON C32-745 BHL (200'FSL & 2309'FEL,SEC.32)	6894.00	-9996.09	628.52	3258522.51	1339753.13	40.2623146	-104.5736315	point
JOHNSON C32 460'N HARDLINE	7088.00	-210.78	-1350.92	3256543.16	1349537.99	40.2892300	-104.5803600	polygon
2D Polygon: dimensions not calculated								

WELLPATH COMPOSITION - Ref Wellbore: JOHNSON C32-745 AWB Ref Wellpath: JOHNSON C32-745 AWP					
Start MD [ft]	End MD [ft]	Positional Uncertainty Model	Log Name/Comment	Wellbore	Survey Date
0.00	1879.00	OWSG MWD rev2 (MS+IFR1)	13.5" Hole NaviTrak OWSG MWD rev2 (MS+IFR1) <181'-1879'>	JOHNSON C32-745 AWB	10/21/2022
1879.00	17163.00	OWSG MWD rev2 (MS+IFR1)	8.5" Hole ATC OWSG MWD rev2 (MS+IFR1) <1976'-17138'>	JOHNSON C32-745 AWB	10/21/2022



Actual Wellpath Report

JOHNSON C32-745 AWP
Page 7 of 7



REFERENCE WELLPATH IDENTIFICATION			
Operator	NOBLE ENERGY, INC	Well	JOHNSON C32-745
Field	WELD COUNTY (NOBLE NAD 83 GRID)	API	05-123-49292
Facility	SEC.29-T04N-R64W	Wellbore	JOHNSON C32-745 AWB
Slot	SLOT#06 JOHNSON C32-745 (330'FNL & 2421'FWL,SEC.29)		

WELLPATH COMMENTS				
MD [ft]	Inclination [°]	Azimuth [°]	TVD [ft]	Comment
181.00	0.070	339.380	181.00	First BH MWD Survey
7290.16	86.779	179.163	6866.37	Cross 460' Hardline(460'FNL&2320'FEL,SEC.29)
7292.00	86.848	179.166	6866.48	Shallowest MD for Perfs
17138.00	89.740	176.640	6890.88	Last BH MWD Survey(227'FSL&2336'FEL,SEC.32)
17163.00	89.740	176.640	6890.99	Projection to Bit(201'FSL&2335'FEL,SEC.32)