



**Cement Bond Log
Gamma Ray
CCL
Temperature**

Company: Occidental Petroleum Corp.
Well: REI 21-9
Field: Wattenberg
County: Weld
State: CO
Country: USA

Company: Occidental Petroleum Corp.
Well: REI 21-9
Field: Wattenberg
County: Weld
State: CO
Country: USA

Location: LAT: 40.24120 / LONG: -104.66160
SEC 9 TWP 3N RGE 65W
SE NE
Permanent Datum: GL
Log Measured From: KB
Drilling Measured From: KB
Elevation: 5019'
Other Services: K.B. 5033', D.F. 5032', G.L. 5019'

Date: OCT 14 2022
Run Number: ONE
Depth Driller: 8164'
Depth Logger: 4000'
Bottom Logged Interval: 4000'
Top Log Interval: SURFACE
Open Hole Size: 7.875"
Type Fluid: H2O
Density / Viscosity: ~8.3LBS
Max. Recorded Temp.: 143 DEG F
Estimated Cement Top: SEE LOG
Time Well Ready: ROA
Time Logger on Bottom: 1330
Equipment Number: 8050
Location: WINDSOR
Recorded By: T. HAWLEY
Witnessed By: RAUL REYES

Borehole Record				Tubing Record			
Run Number	Bit	From	To	Size	Weight	From	To
1	12.25"	0'	817'				
2	7.875"	0'	8164'				

Casing Record: Size 8.875"
Surface String: 24# J-55
Prot. String: Wgt/Ft
Production String: 4.5" 11.6# M-80
Liner: 8164'

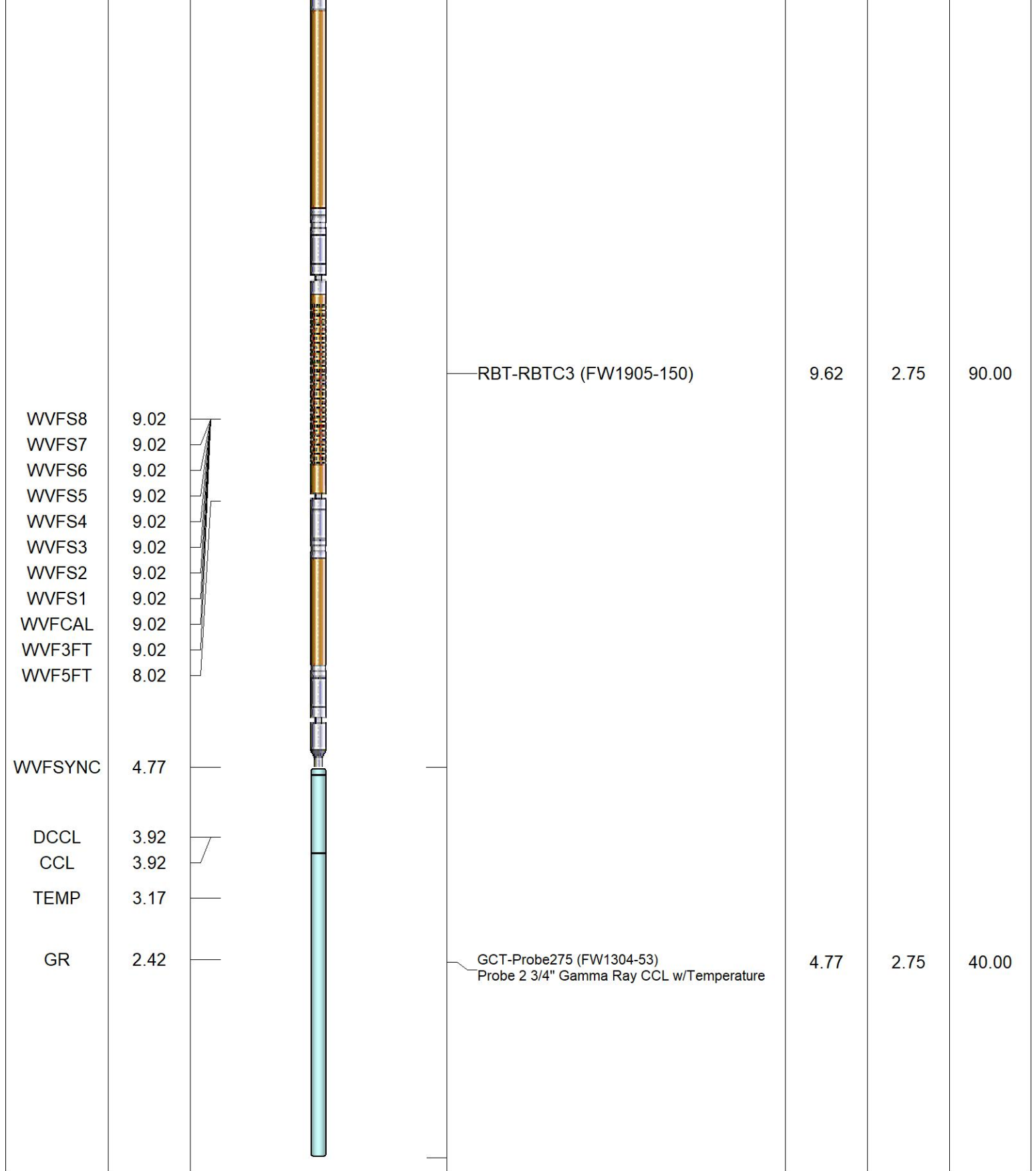
<<< Fold Here >>>

All interpretations are opinions based on inferences from electrical or other measurements and we cannot and do not guarantee the accuracy or correctness of any interpretation, and we shall not, except in the case of gross or willful negligence on our part, be liable or responsible for any loss, costs, damages, or expenses incurred or sustained by anyone resulting from any interpretation made by any of our officers, agents or employees. These interpretations are also subject to our general terms and conditions set out in our current Price Schedule.

Comments

**LOG NOT CORRELATED TO ANY EXISTING LOG
!!!!!!!!!!!! THANK YOU FOR CHOOSING THE WIRELINE GROUP !!!!!!!!!!!**

Sensor	Offset (ft)	Schematic	Description	Length (ft)	O.D. (in)	Weight (lb)
ErrCt	15.39		Cable_Head-Standard Standard Cable Head	1.00	1.69	1.00



Dataset: 0512333497_rei 21-9_oxy.db: field/well/run1/pass21
 Total length: 15.39 ft
 Total weight: 131.00 lb
 O.D.: 2.75 in

Calibration Report

Database File 0512333497_rei 21-9_oxy.db
 Dataset Pathname pass21
 Dataset Creation Fri Oct 14 13:36:15 2022

Gamma Ray Calibration Report

Serial Number: FW1304-53
 Tool Model: Probe275
 Performed: Thu Jan 7 13:45:20 2021

Calibrator Value: 1.0 GAPI

Background Reading: 0.0 cps
 Calibrator Reading: 1.0 cps

Sensitivity: 1.0000 GAPI/cps

Temperature Calibration Report

Serial Number: FW1304-53
 Tool Model: Probe275
 Performed: Fri Jan 8 11:49:42 2021

	Reference	Reading
Low Reference:	100.00 degF	6258.73
High Reference:	350.00 degF	26472.00
Gain:	0.01	
Offset:	22.59	
Delta Spacing	2	

Segmented Cement Bond Log Calibration Report

Serial Number: FW1905-150
 Tool Model: RBTC3

Calibration Casing Diameter: 4.500 in
 Calibration Depth: 3579.139 ft

Master Calibration, performed Wed Oct 12 07:44:31 2022:

	Raw (v)		Calibrated (mv)		Results	
	Zero	Cal	Zero	Cal	Gain	Offset
3'	0.016	0.715	1.000	81.196	114.612	-0.801
CAL	0.010	0.834				
5'	0.022	0.554	1.000	81.196	150.539	-2.238
SUM						
S1	0.008	0.732	0.000	100.000	138.157	-1.093
S2	0.009	0.675	0.000	100.000	150.295	-1.391
S3	0.017	0.634	0.000	100.000	162.089	-2.703
S4	0.019	0.654	0.000	100.000	157.478	-2.932
S5	0.018	0.693	0.000	100.000	148.127	-2.689
S6	0.016	0.751	0.000	100.000	136.161	-2.221
S7	0.016	0.802	0.000	100.000	127.221	-1.994
S8	0.016	0.802	0.000	100.000	127.193	-1.984

Internal Reference Calibration, performed (Not Performed):

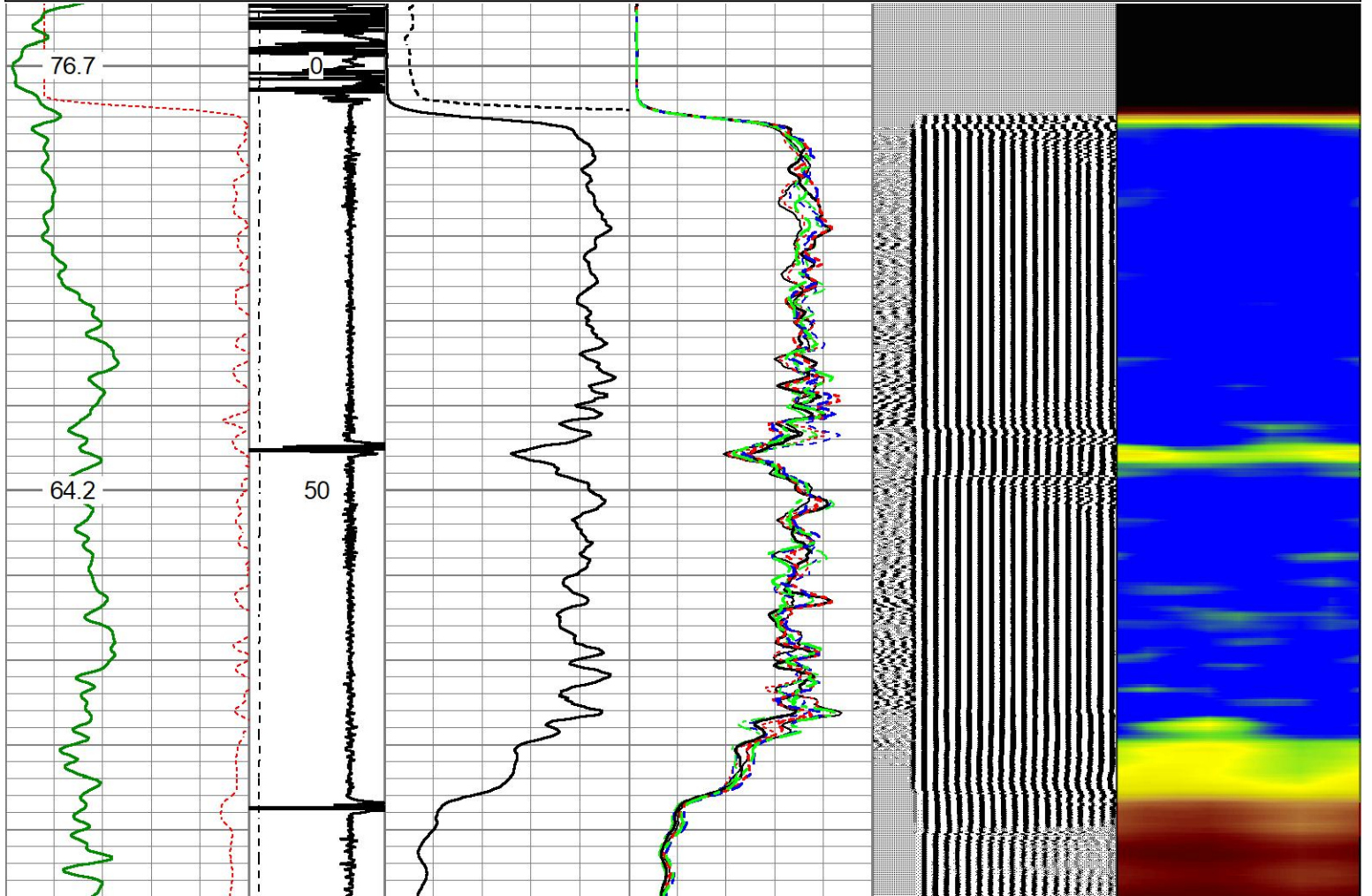
	Raw (v)		Calibrated (v)		Results	
	Zero	Cal	Zero	Cal	Gain	Offset
CAL	0.000	0.000	0.010	0.834	1.000	0.000

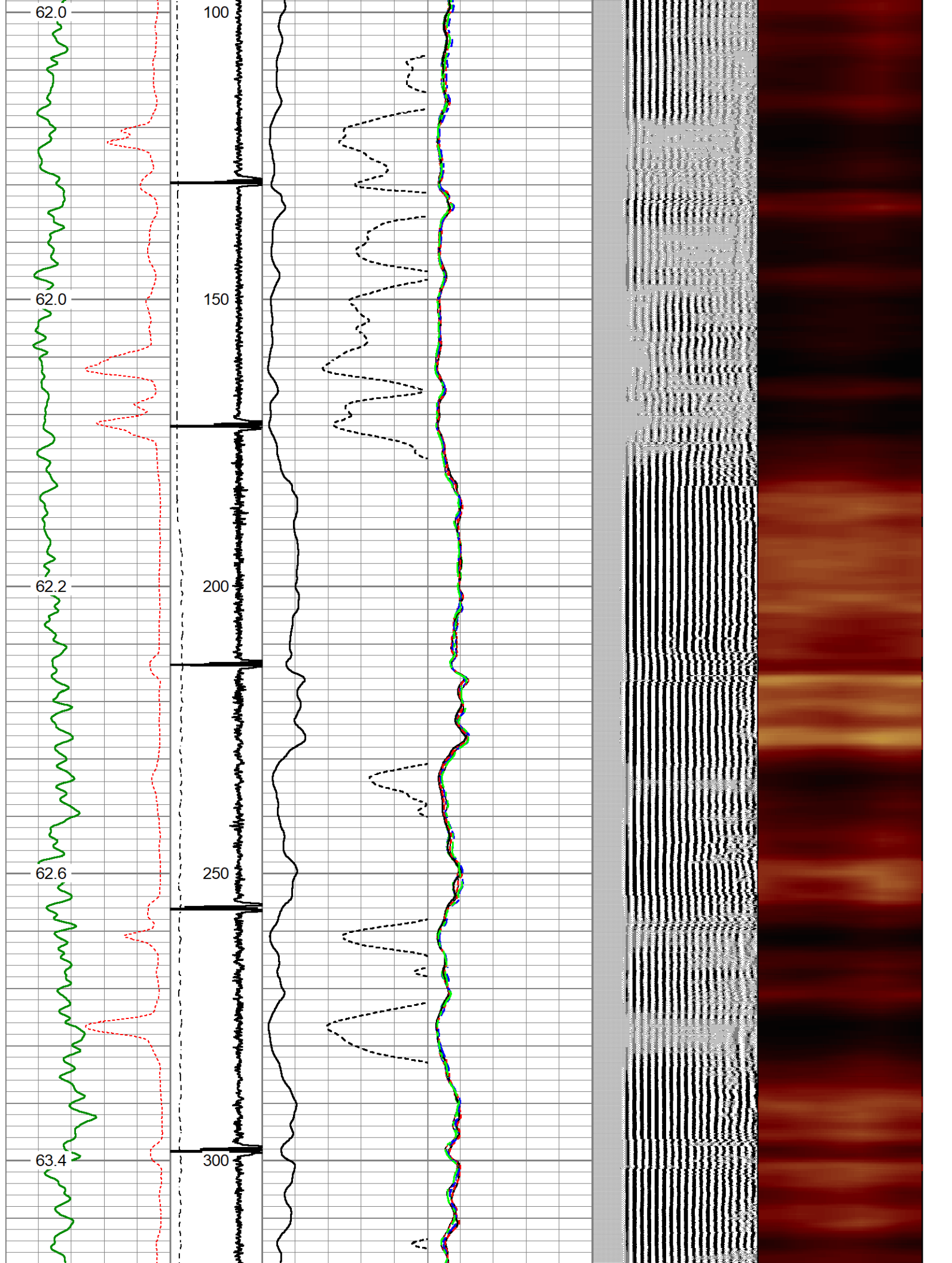
Air Zero Calibration, performed Fri Oct 14 13:09:02 2022:

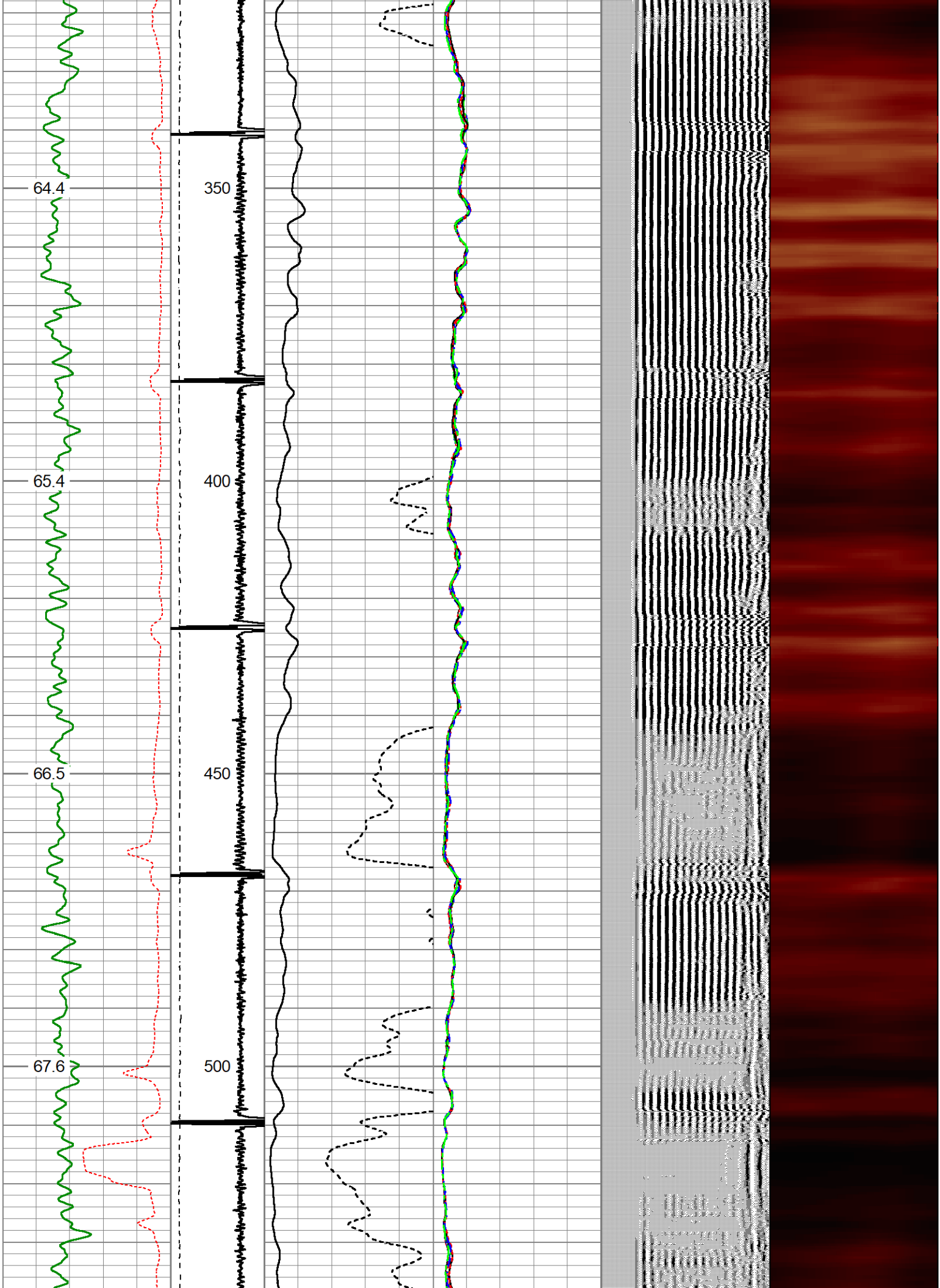
	Raw (v)	Calibrated (v)	Results
	Zero	Zero	Offset
3'	0.003	0.000	0.013
5'	0.002	0.000	0.019
SUM			
S1	-0.001	0.000	0.008
S2	0.003	0.000	0.006
S3	0.004	0.000	0.013
S4	0.004	0.000	0.015
S5	0.003	0.000	0.015
S6	0.003	0.000	0.013
S7	0.003	0.000	0.013
S8	0.003	0.000	0.012

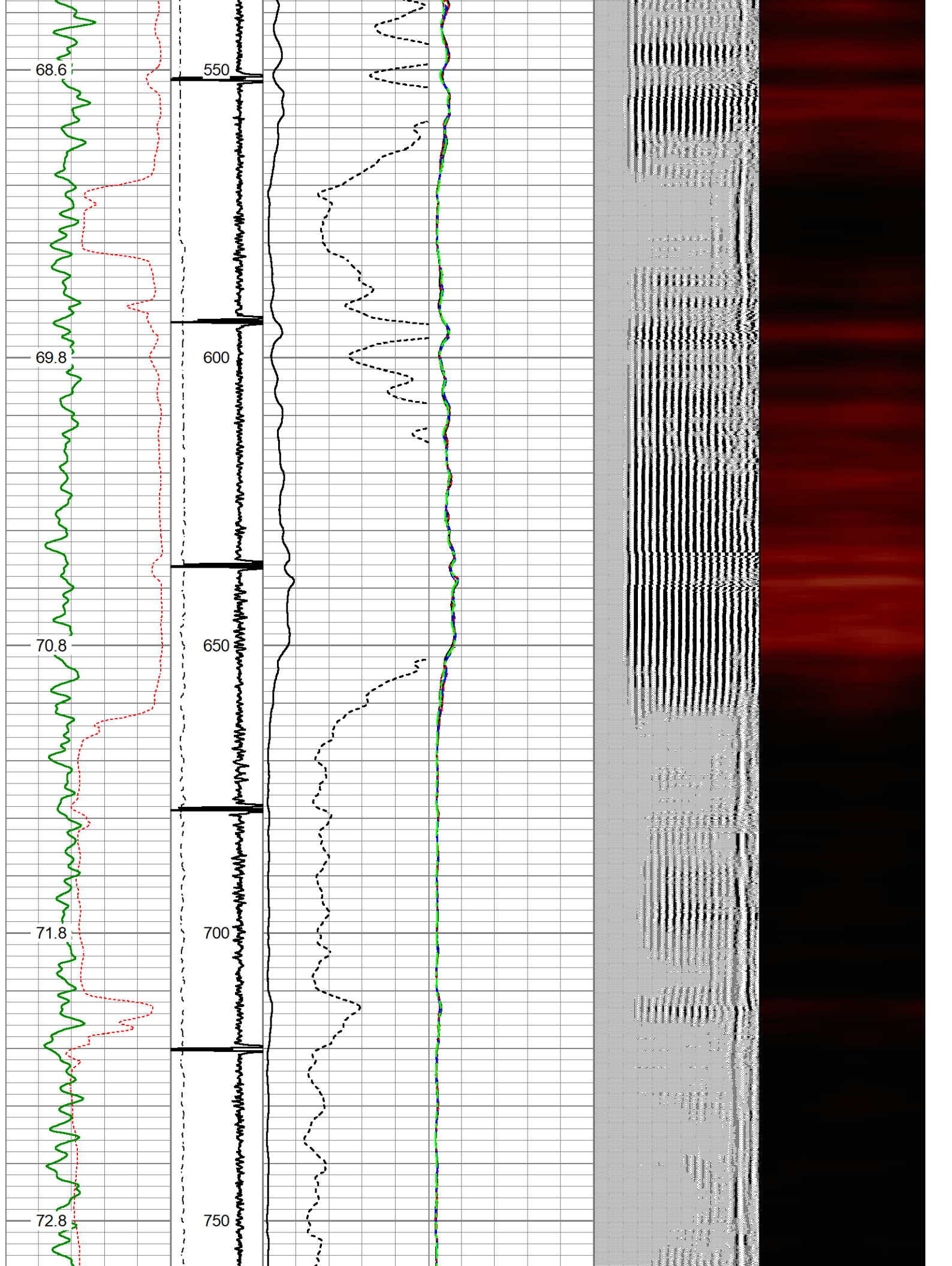
Database File 0512333497_rei 21-9_oxy.db
 Dataset Pathname pass21
 Presentation Format rbt-gct8acc
 Dataset Creation Fri Oct 14 13:36:15 2022
 Charted by Depth in Feet scaled 1:240

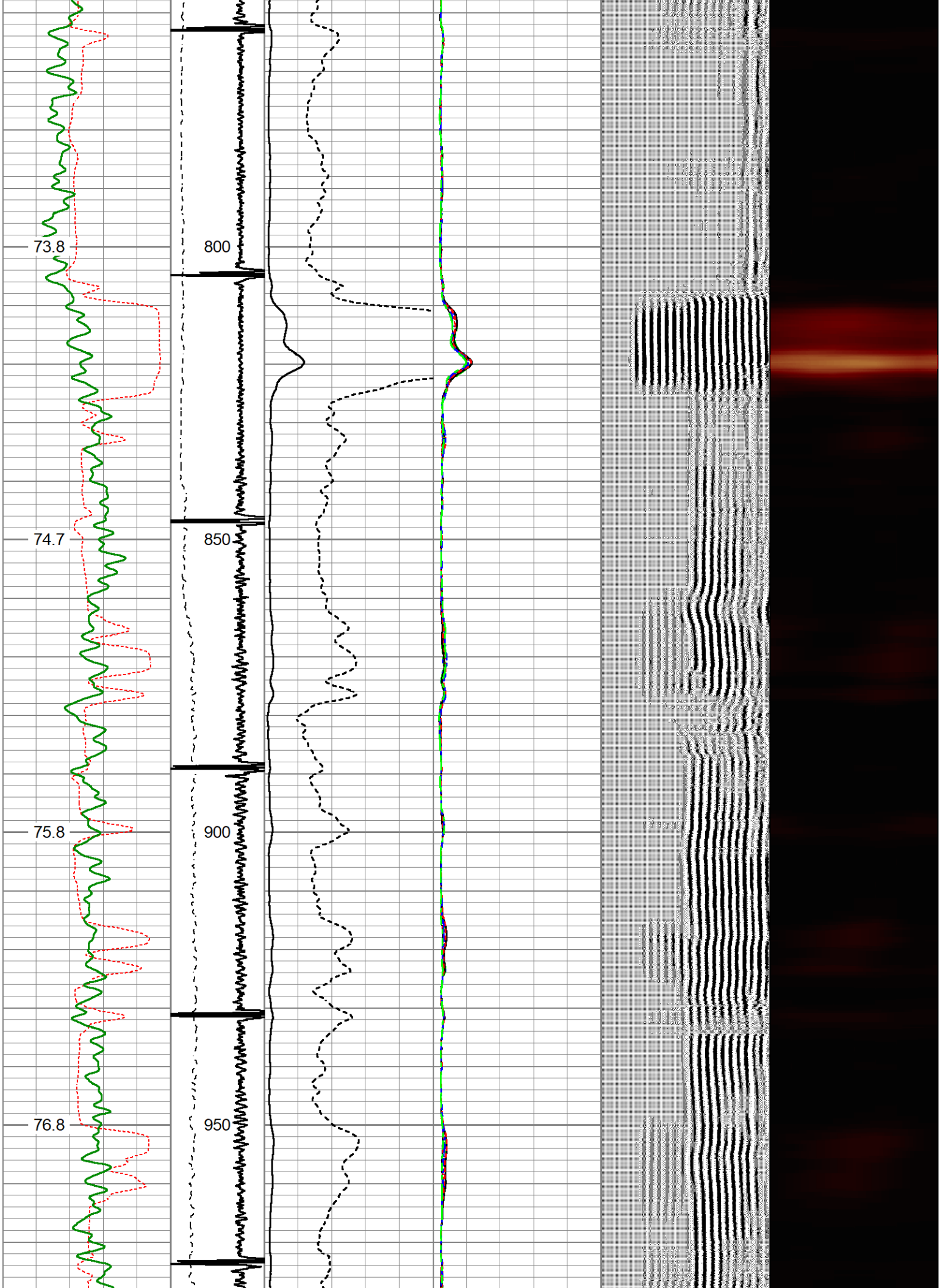
Travel Time	-3 CCL	1 0	AMP (mV)	100	-5	AMPS1	150	200	VDL (usec)	1200	1	Cement Map	8
343 (usec)	243	LTEN	0	AMPx10 (mV)	10	-5	AMPS2	150					
Gamma Ray	0	(lb/3000)				-5	AMPS3	150					
0 (GAPI)	200					-5	AMPS4	150					
TEMP						-5	AMPS5	150					
(degF)						-5	AMPS6	150					
						-5	AMPS7	150					
						-5	AMPS8	150					

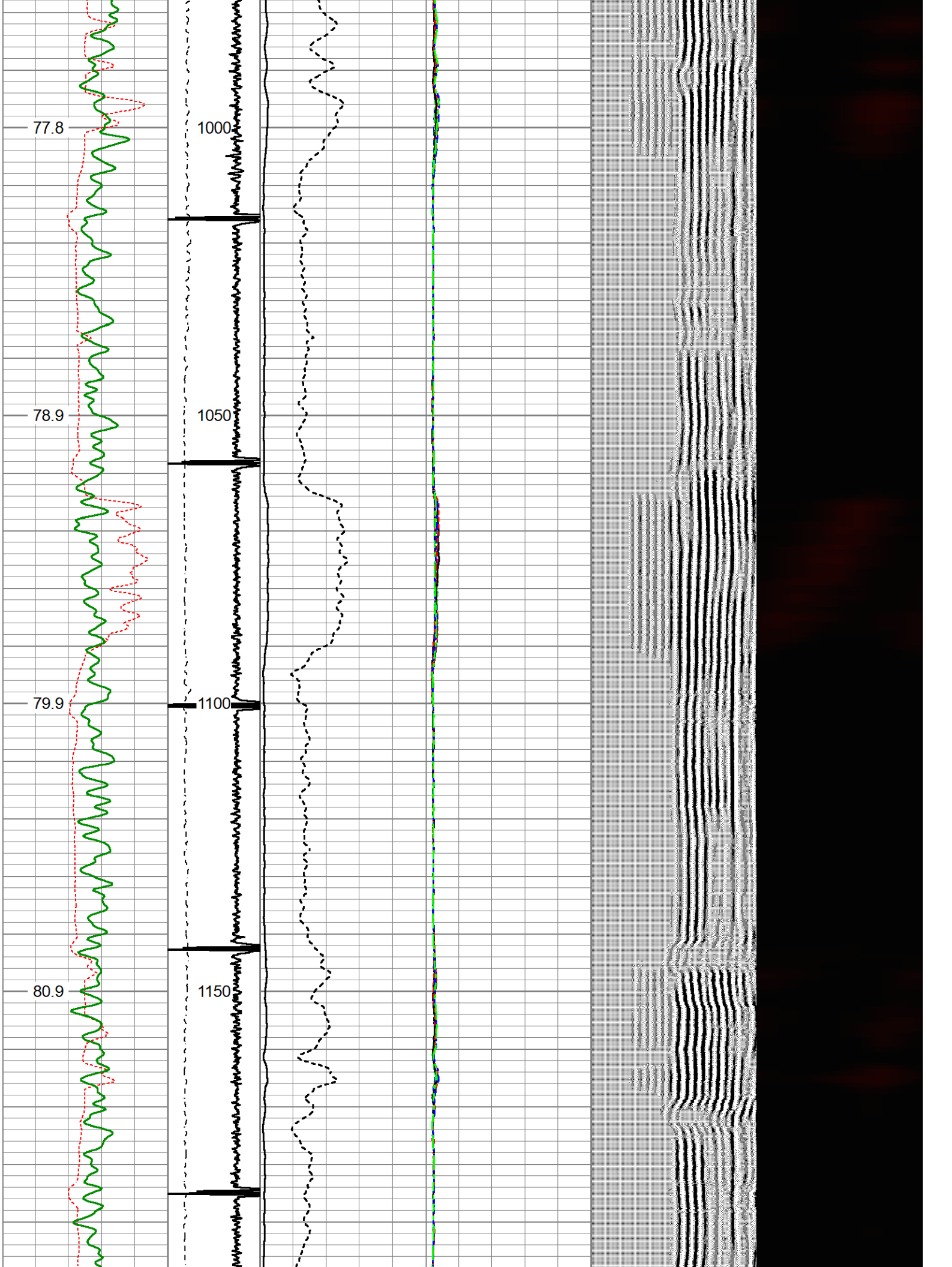


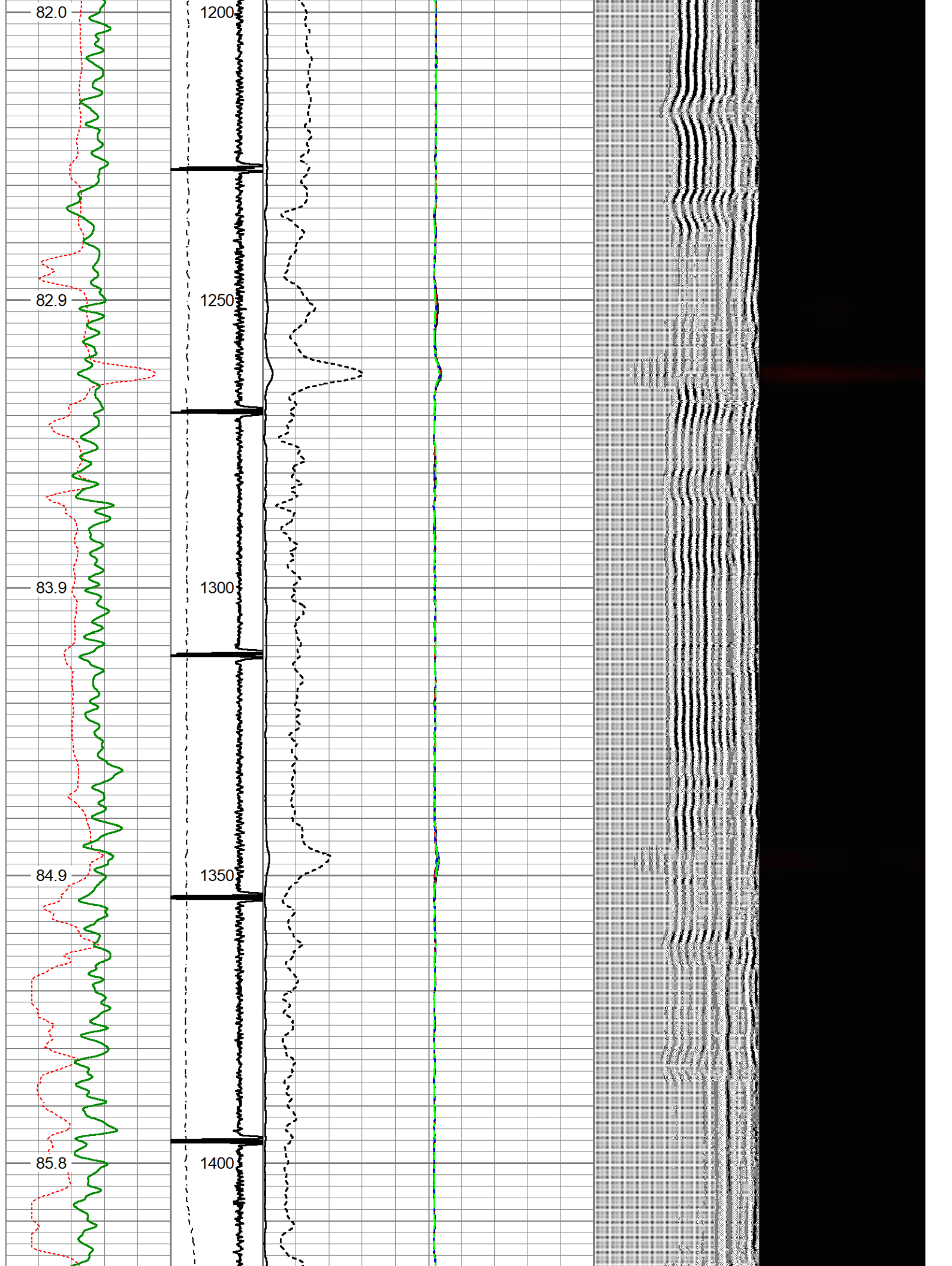












86.7

1450

87.8

1500

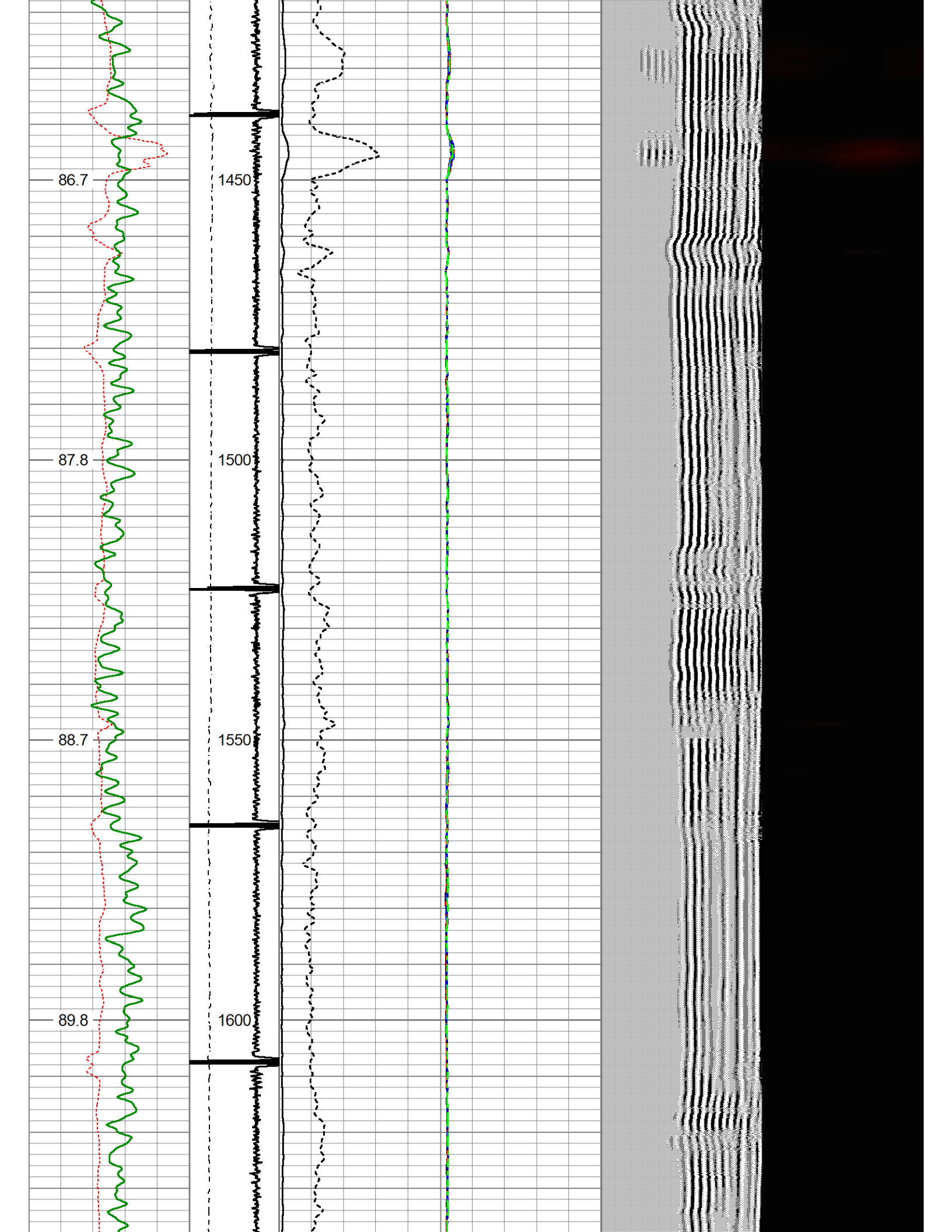
88.7

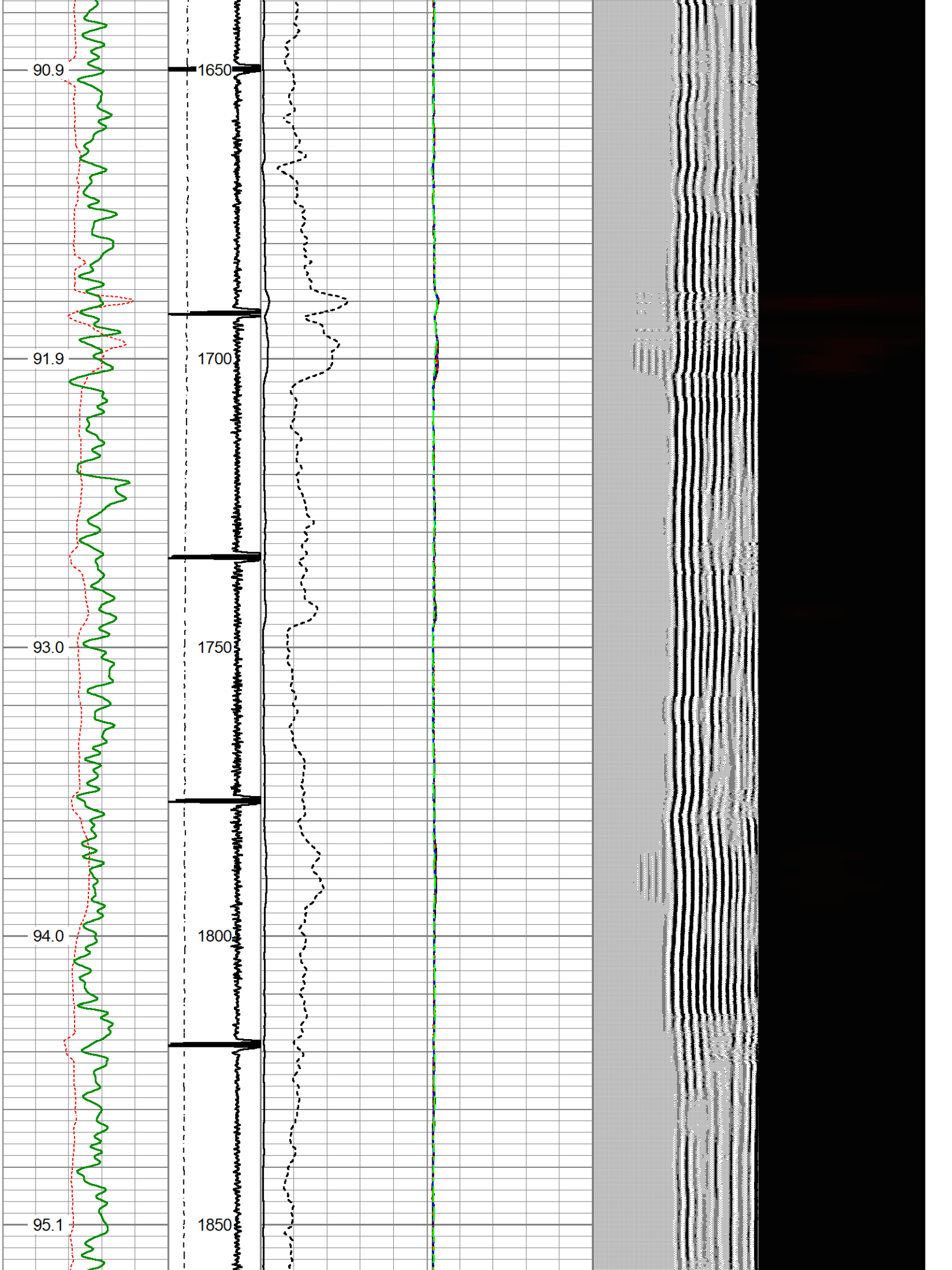
1550

89.8

1600

1450
1500
1550
1600





96.2

1900

97.4

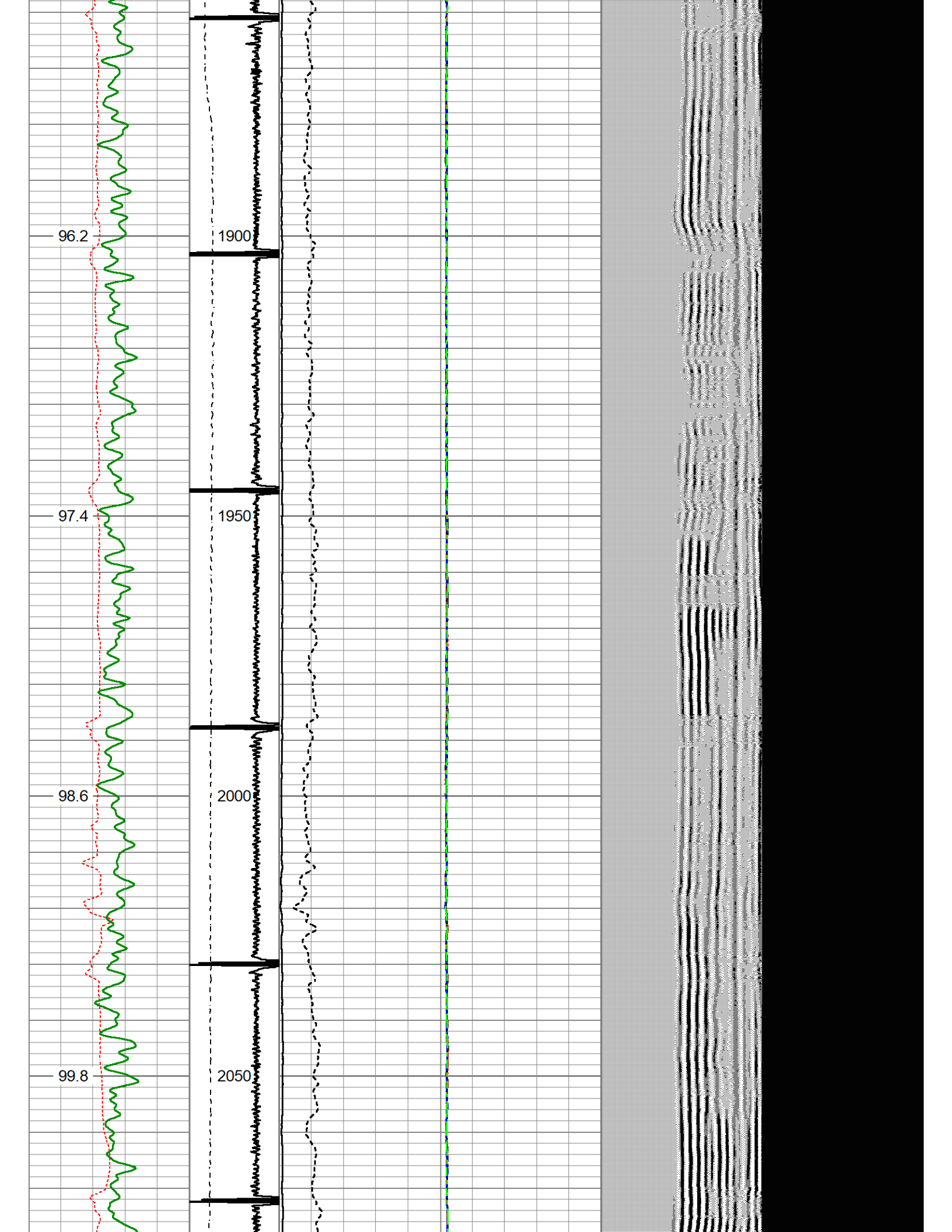
1950

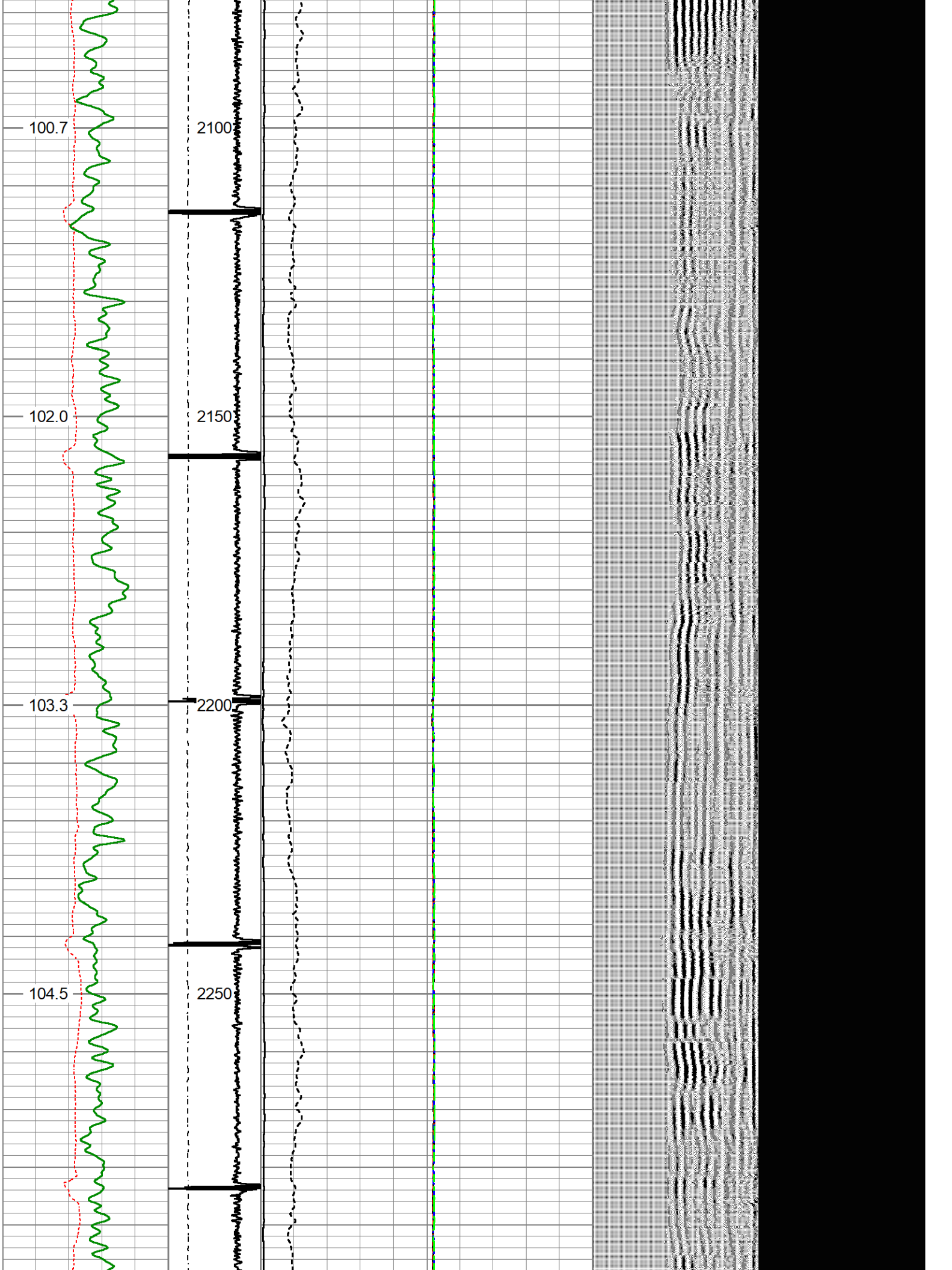
98.6

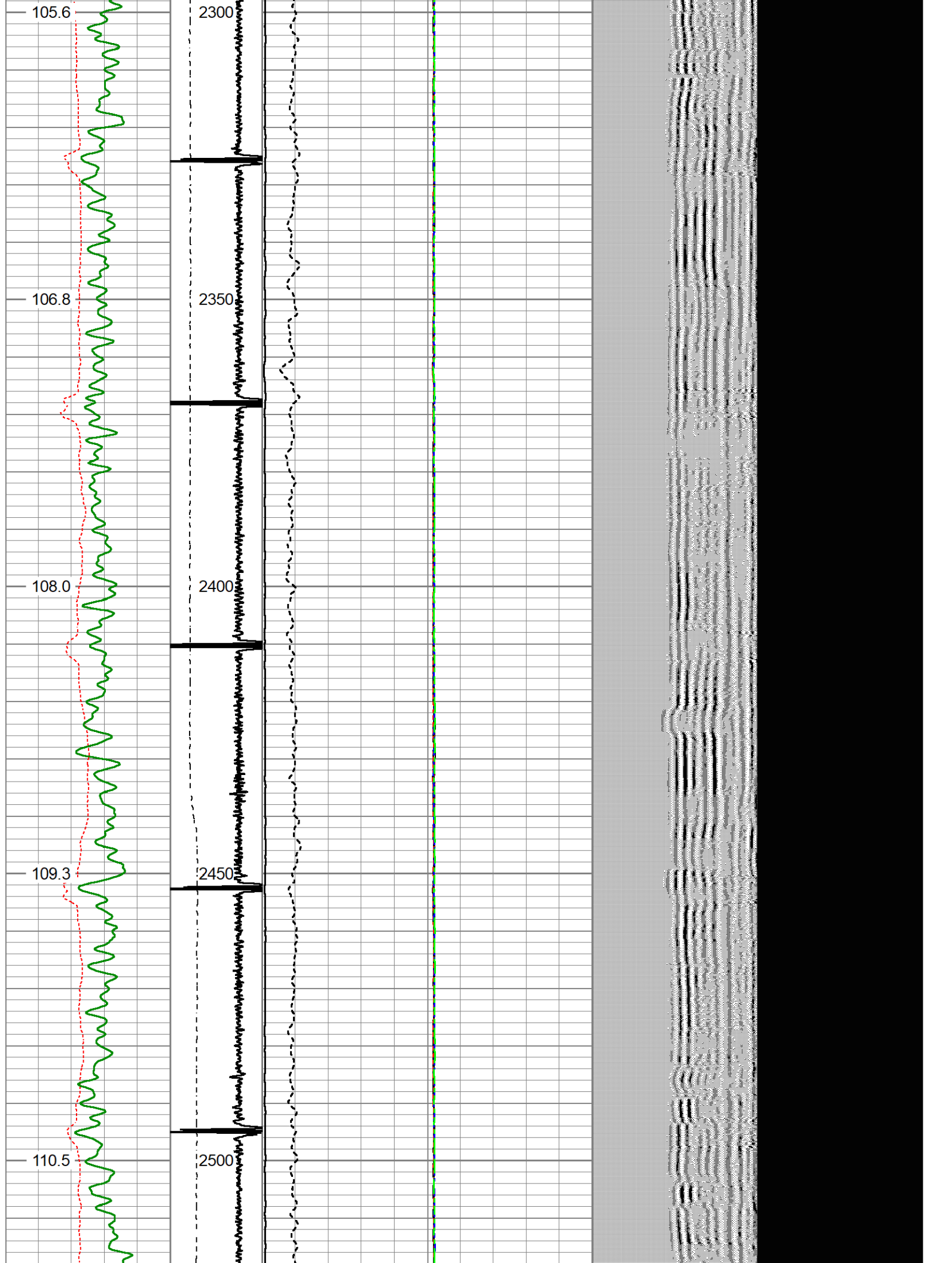
2000

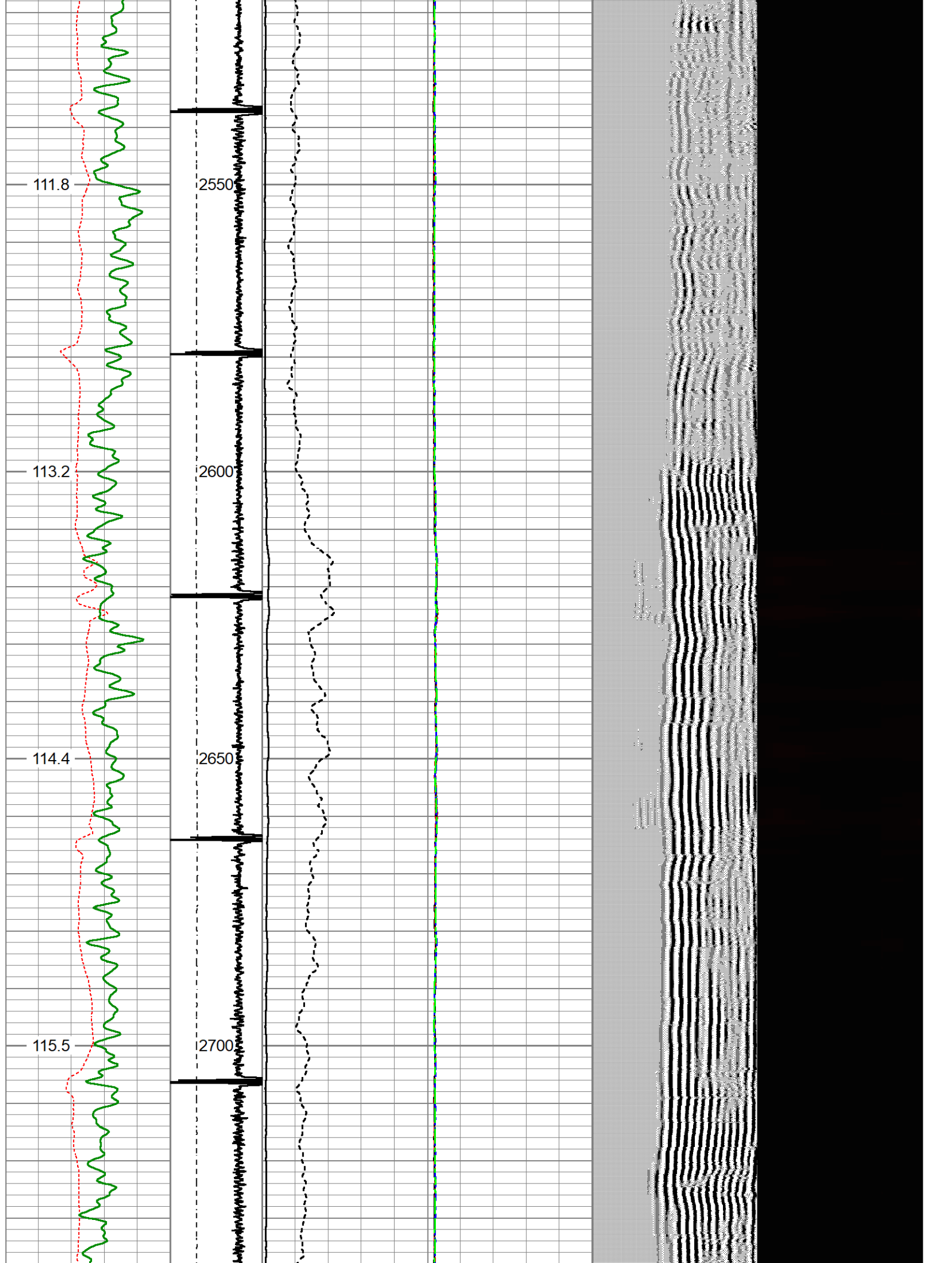
99.8

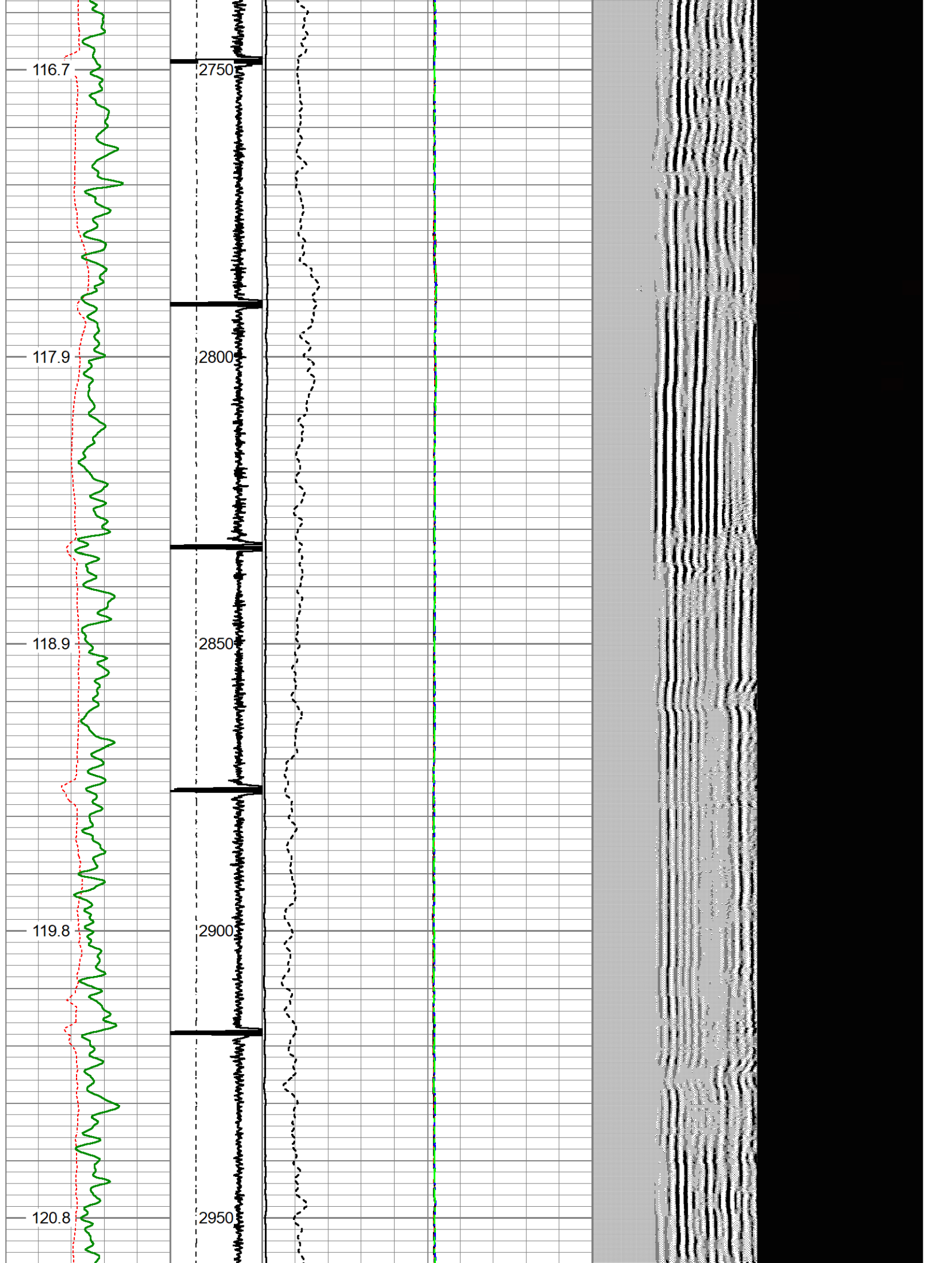
2050











121.8

3000

122.8

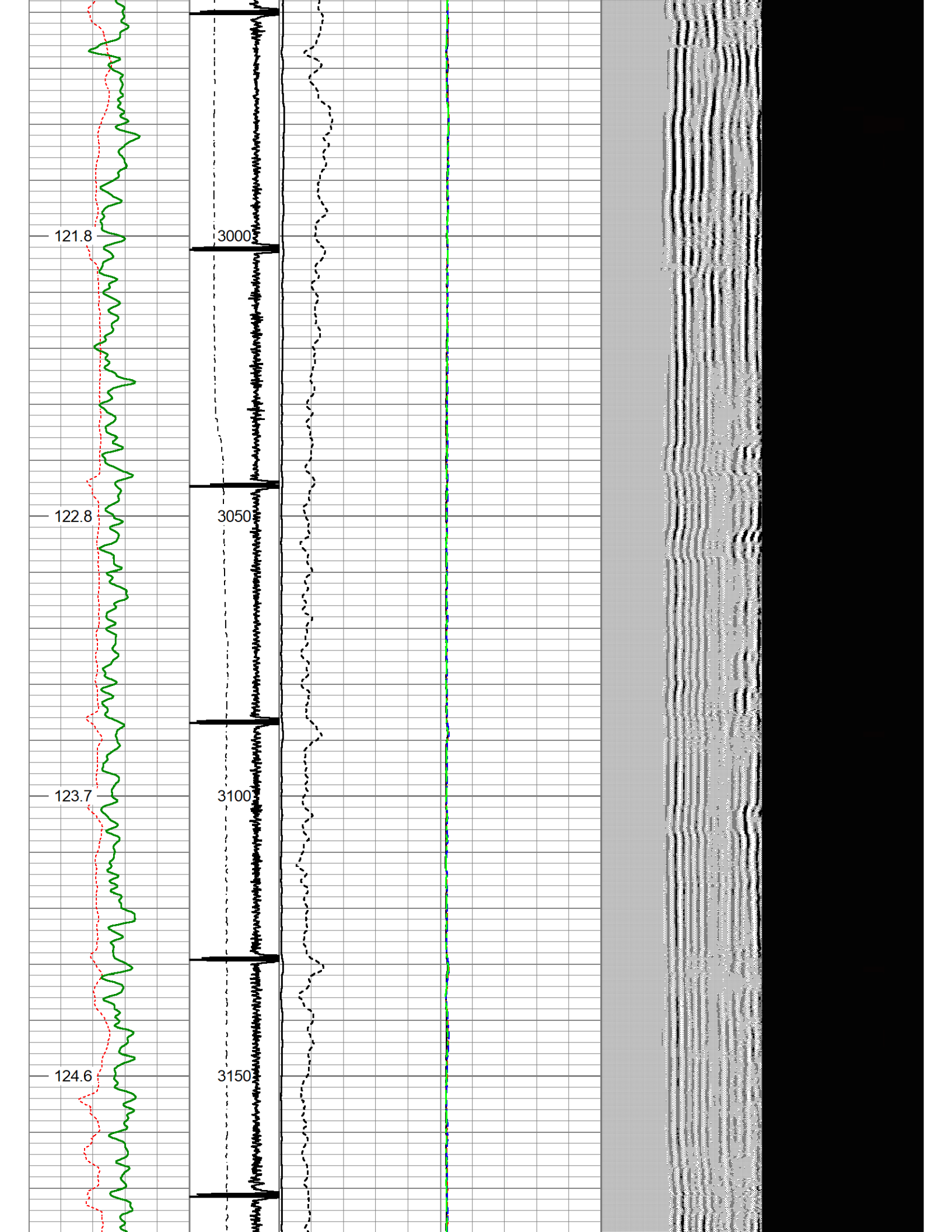
3050

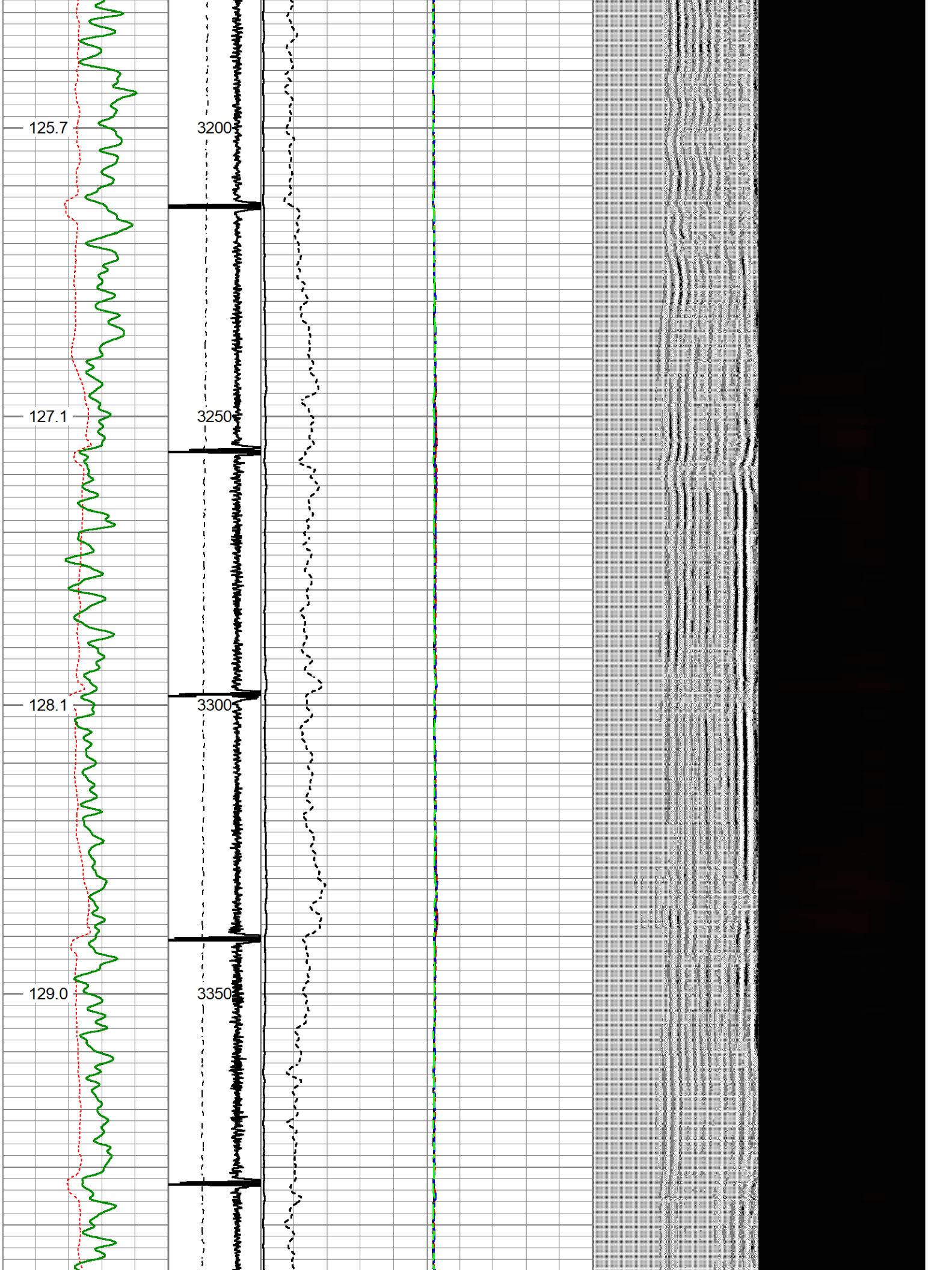
123.7

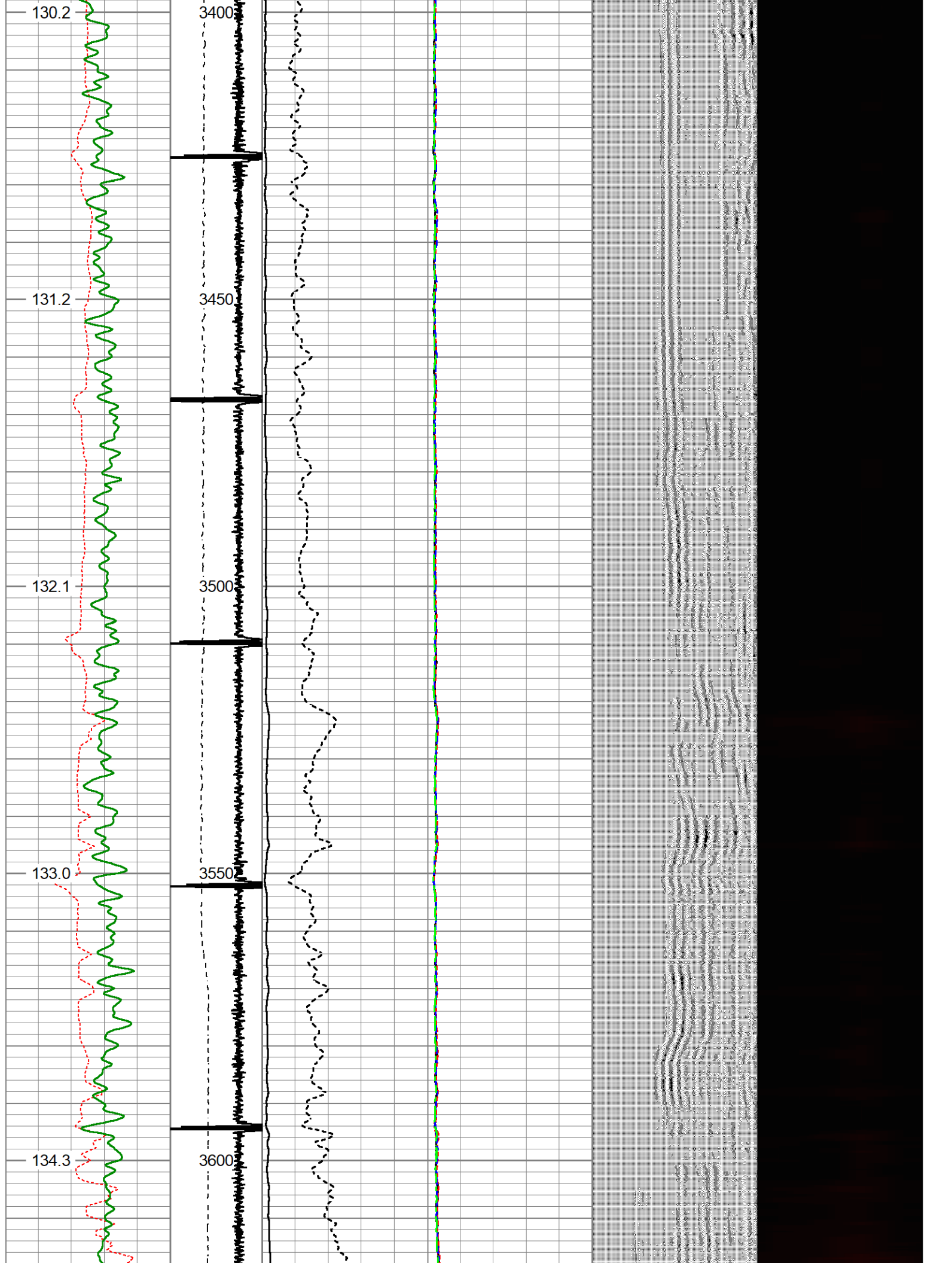
3100

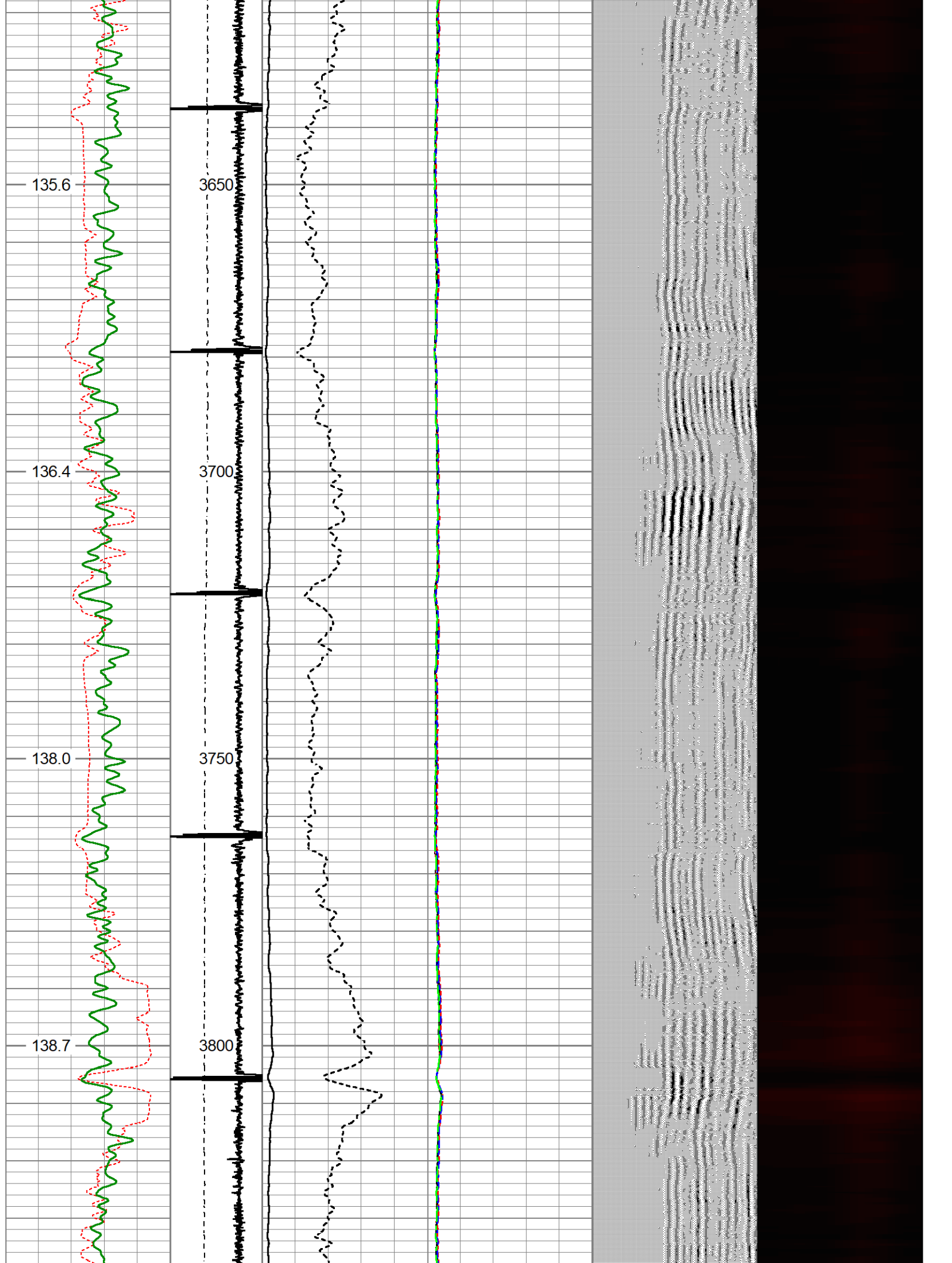
124.6

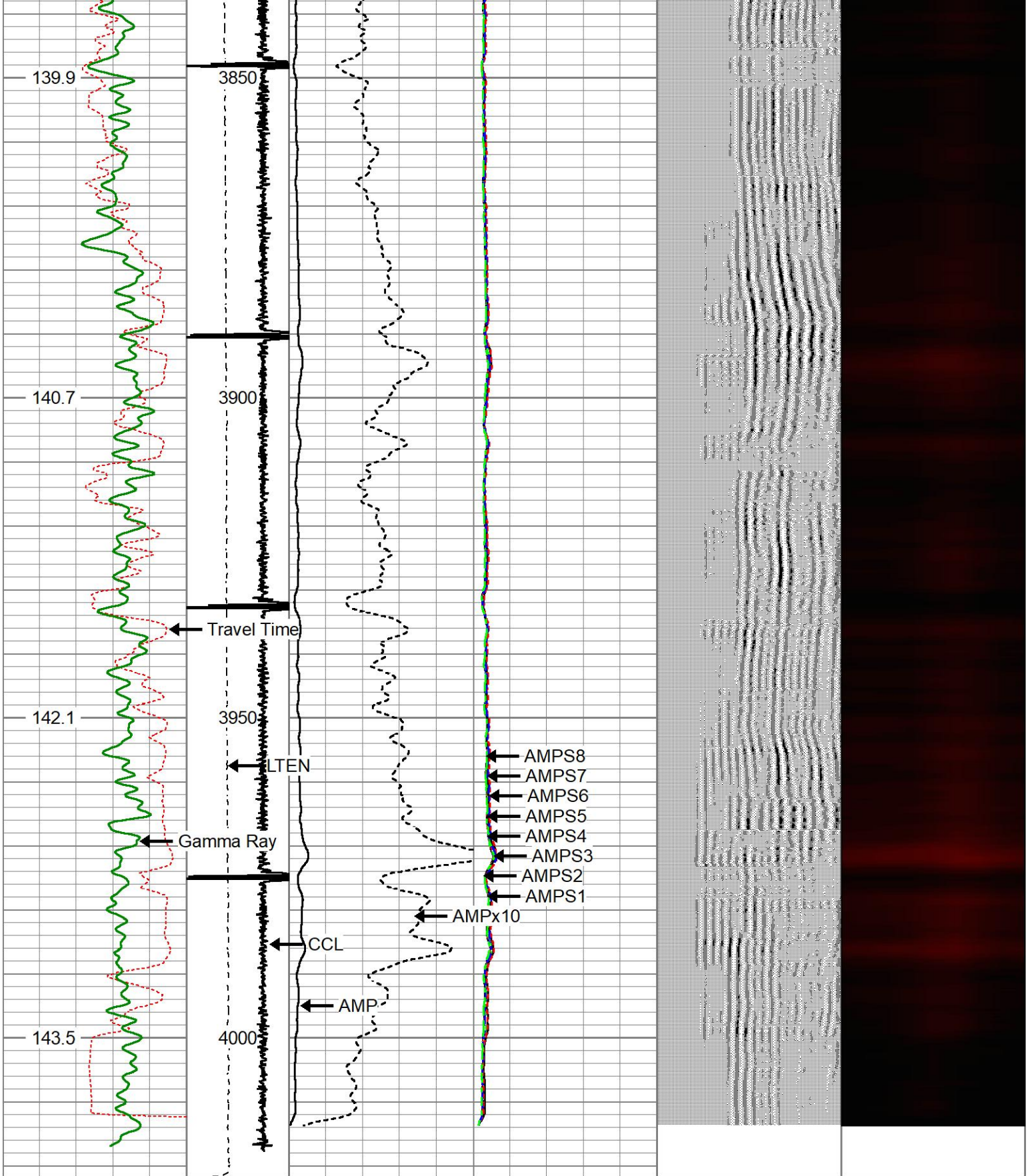
3150











Travel Time	-3	CCL	1	0	AMP (mV)	100	-5	AMPS1	150	200	VDL (usec)	1200	1	Cement Map	8
343 (usec)	243	LTEN	0	AMPx10 (mV)	10	-5	AMPS2	150							
Gamma Ray	0	(lb3000)				-5	AMPS3	150							
0 (GAPI)	200					-5	AMPS4	150							
TEMP						-5	AMPS5	150							
(degF)						-5	AMPS6	150							
						-5	AMPS7	150							
						5	AMPS8	150							



Company	Occidental Petroleum Corp.	
Well	REI 21-9	
Field	Wattenberg	
County	Weld	
State	CO	
		Country USA