

Document Path: C:\Users\Eligh\Desktop\Eligh\GIS2 - Denver\Oxy\09A1417236 - PC Gas Unit 1-26 Wellhead\Project Files\09A1417236 - PC Gas Unit 1-26 Wellhead.aprx

Legend

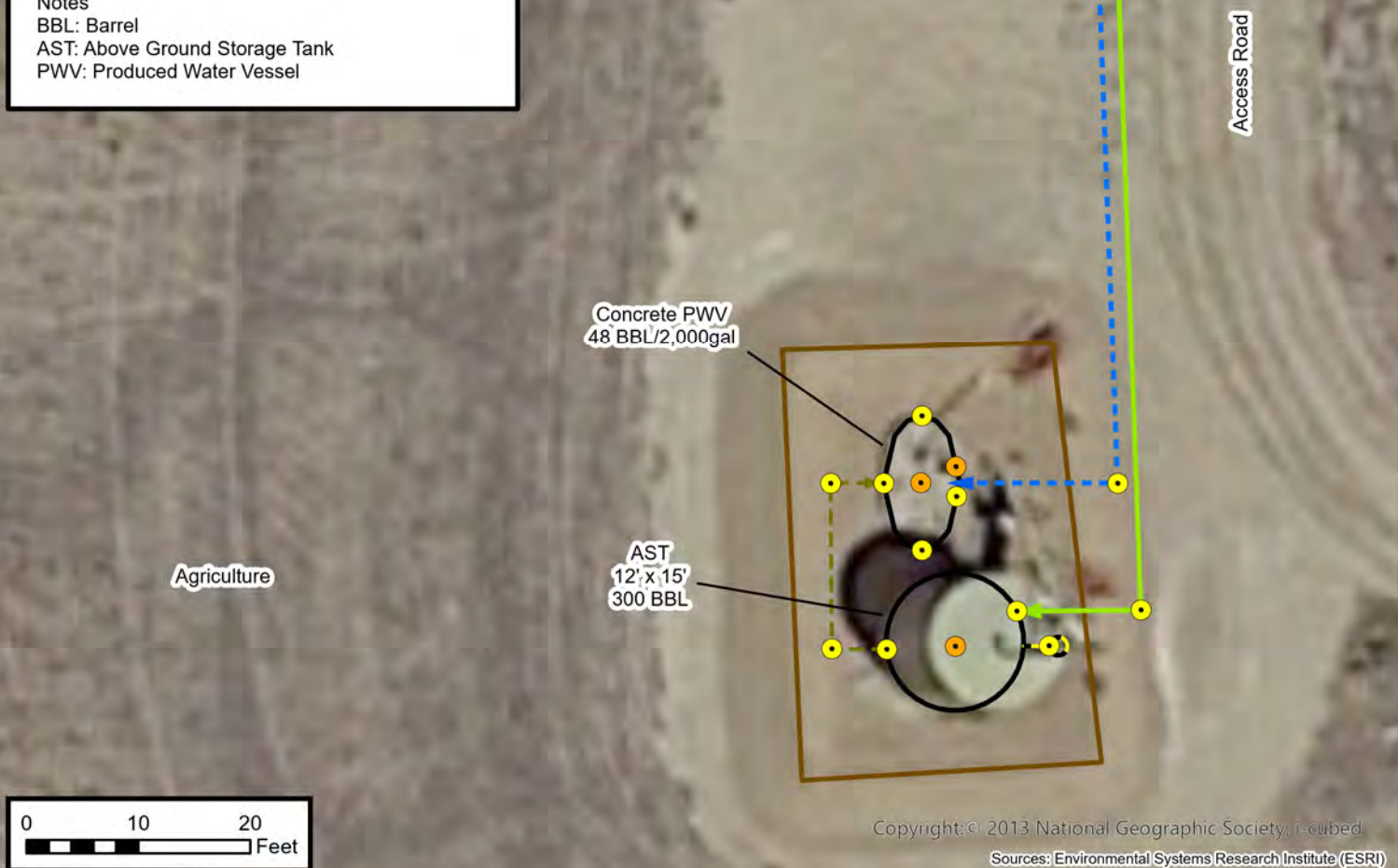
- Proposed Soil Sample Location
- Proposed Soil Screening Location
- > Drain Line
- - -> Gas Line
- > Oil Dump
- - -> Water Dump
- Flowline
- - - Drip Containment
- Earthen Berm
- Infrastructure

Notes

BBL: Barrel

AST: Above Ground Storage Tank

PWV: Produced Water Vessel



Copyright: © 2013 National Geographic Society, i-cubed

Sources: Environmental Systems Research Institute (ESRI)

Proposed Facility Closure and Soil Sample Location Map

Pace Connolly Gas Unit 1-26 O SA Facility

Kerr-McGee Oil & Gas Onshore, LP

NESW & SESW Sec 26-T2N-R68W

Weld County, CO

Project Number: 09A1417236

FIGURE

2