



**SECTOR BOND
GAMMA RAY
CCL LOG**

Company OCCIDENTAL PETROLEUM CORP
Well OVERLOOK 2-30
Field WATTENBERG
County WELD
State COLORADO Country WELD

Company OCCIDENTAL PETROLEUM CORP
Well OVERLOOK 2-30
Field WATTENBERG
County WELD
State COLORADO Country WELD

Location: API #: 05-123-34156
NENE
LAT: 40.1147878 LONG: -104.9261585
SEC 30 TWP 2N RGE 67W
Permanent Datum GL Elevation 5011'
Log Measured From KB
Drilling Measured From KB
Other Services
Elevation
K.B. 5026'
D.F. 5025'
G.L. 5011'

Date JUNE 27, 2022

Run Number ONE
Depth Driller 8326'
Depth Logger 4000'
Bottom Logged Interval 4000'
Top Log Interval SURFACE
Open Hole Size 7.875"
Type Fluid WATER
Density / Viscosity N/A
Max. Recorded Temp. 112°F
Estimated Cement Top 2146'
Time Well Ready N/A
Time Logger on Bottom N/A
Equipment Number 1016
Location BRIGHTON CO
Recorded By P LOPEZ
Witnessed By MR. JEREMY DUTY

Borehole Record				Tubing Record			
Run Number	Bit	From	To	Size	Weight	From	To


Casing Record
Surface String 8-5/8" Size Wgt/Ft 24 Top Bottom 876'
Prot. String
Production String 4.50" 11.6 SURFACE 8325'
Liner

<<< Fold Here >>>

All interpretations are opinions based on inferences from electrical or other measurements and we cannot and do not guarantee the accuracy or correctness of any interpretation, and we shall not, except in the case of gross or willful negligence on our part, be liable or responsible for any loss, costs, damages, or expenses incurred or sustained by anyone resulting from any interpretation made by any of our officers, agents or employees. These interpretations are also subject to our general terms and conditions set out in our current Price Schedule.

Comments

**DEPTH REFERENCE TO PSI
CEMENT BOND LOG DATED 07/07/12**

Sensor	Offset (ft)	Schematic	Description	Length (ft)	O.D. (in)	Weight (lb)
			Cable_Head-1_7/16 Titan 1 7/16" Cable Head	1.02	1.44	3.31

			Centralizers-8071-275-200 Tekco 2 3/4" Adjustable Centralizer	2.73	2.75	25.00
WVFSYNC	18.46					
WVFCAL	18.46					
TEMP	17.33					
WVFS8	16.04					
WVFS7	16.04		SCBLTEKSECT-275 Temp JS (IBUCO04)	9.13	2.75	130.00
WVFS6	16.04		TekCo 2 3/4" 400 Deg. F Sector Tool with Temperature			
WVFS5	16.04					
WVFS4	16.04					
WVFS3	16.04					
WVFS2	16.04					
WVFS1	16.04					
WVF3FT	15.29					
WVF5FT	14.29					
WVFTEMP	10.96					
			Centralizers-8071-275-200 Tekco 2 3/4" Adjustable Centralizer	2.73	2.75	25.00
CCL	7.08		CCL-275tekco (111) Tekco 2 3/4" 450 Deg. F Rare Earth Magnets	1.83	2.75	33.00
GR	3.77		GR-Tek-Co 2 3/4 (0111) Tekco 2 3/4" 400 Deg. F Logging Gamma Ray	3.67	2.75	40.00
			Centralizers-8071-275-200 Tekco 2 3/4" Adjustable Centralizer	2.73	2.75	25.00

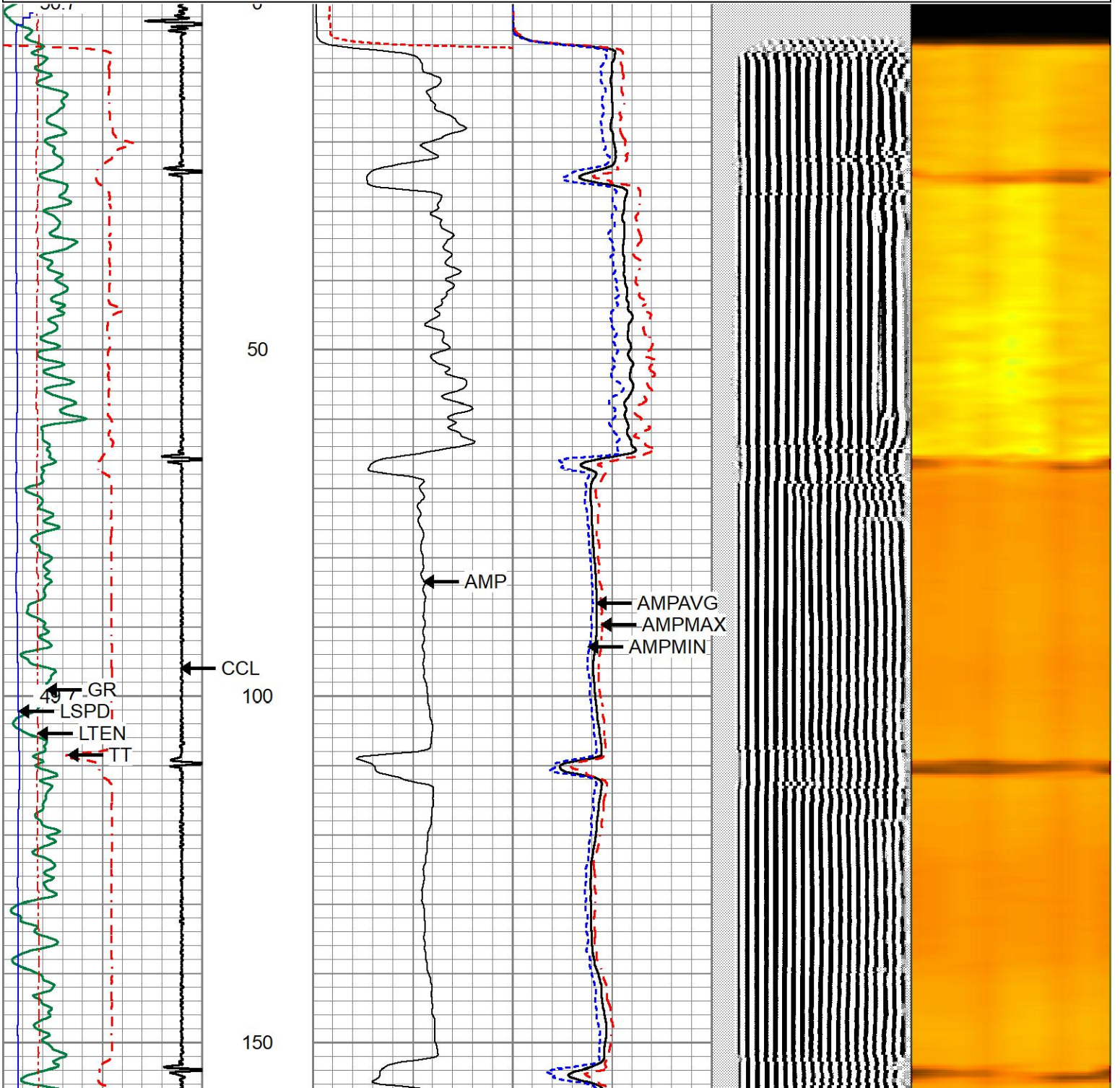
Dataset: 436695_oxy_overlook2-30_0512334156_20220627_scbl.db: field/well/run1/pass14
 Total length: 23.83 ft
 Total weight: 281.31 lb
 O.D.: 2.75 in

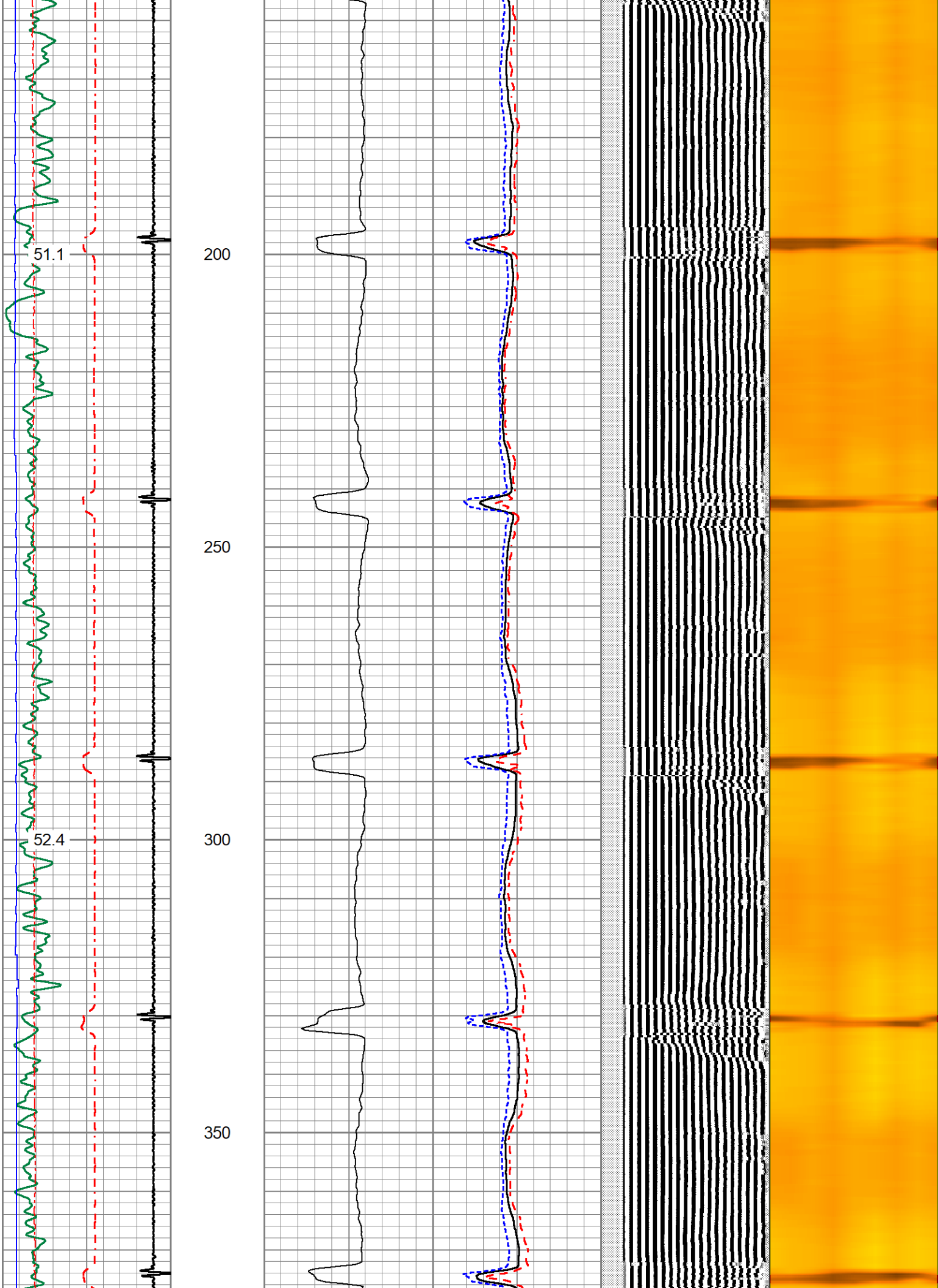


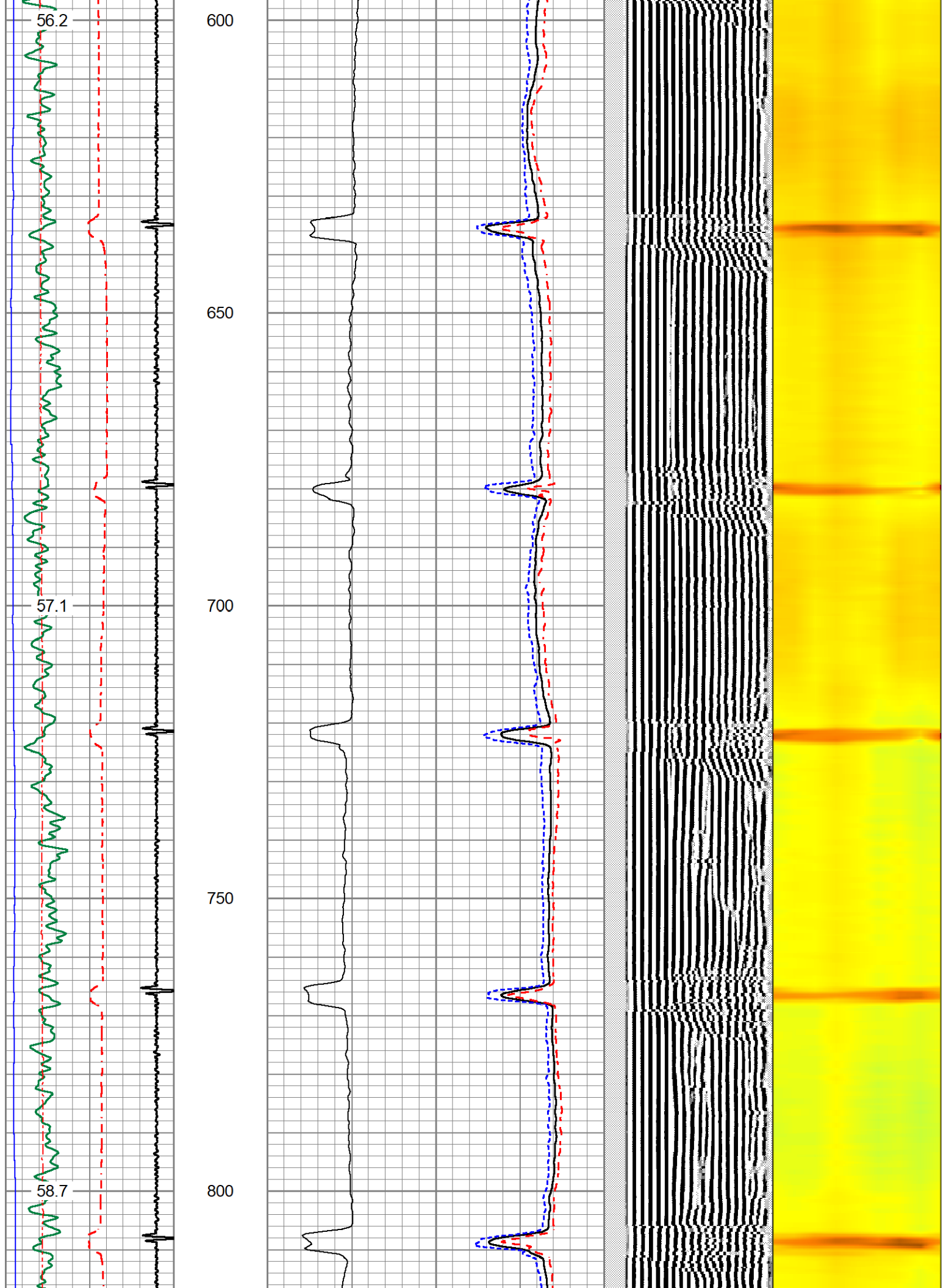
MAIN PASS

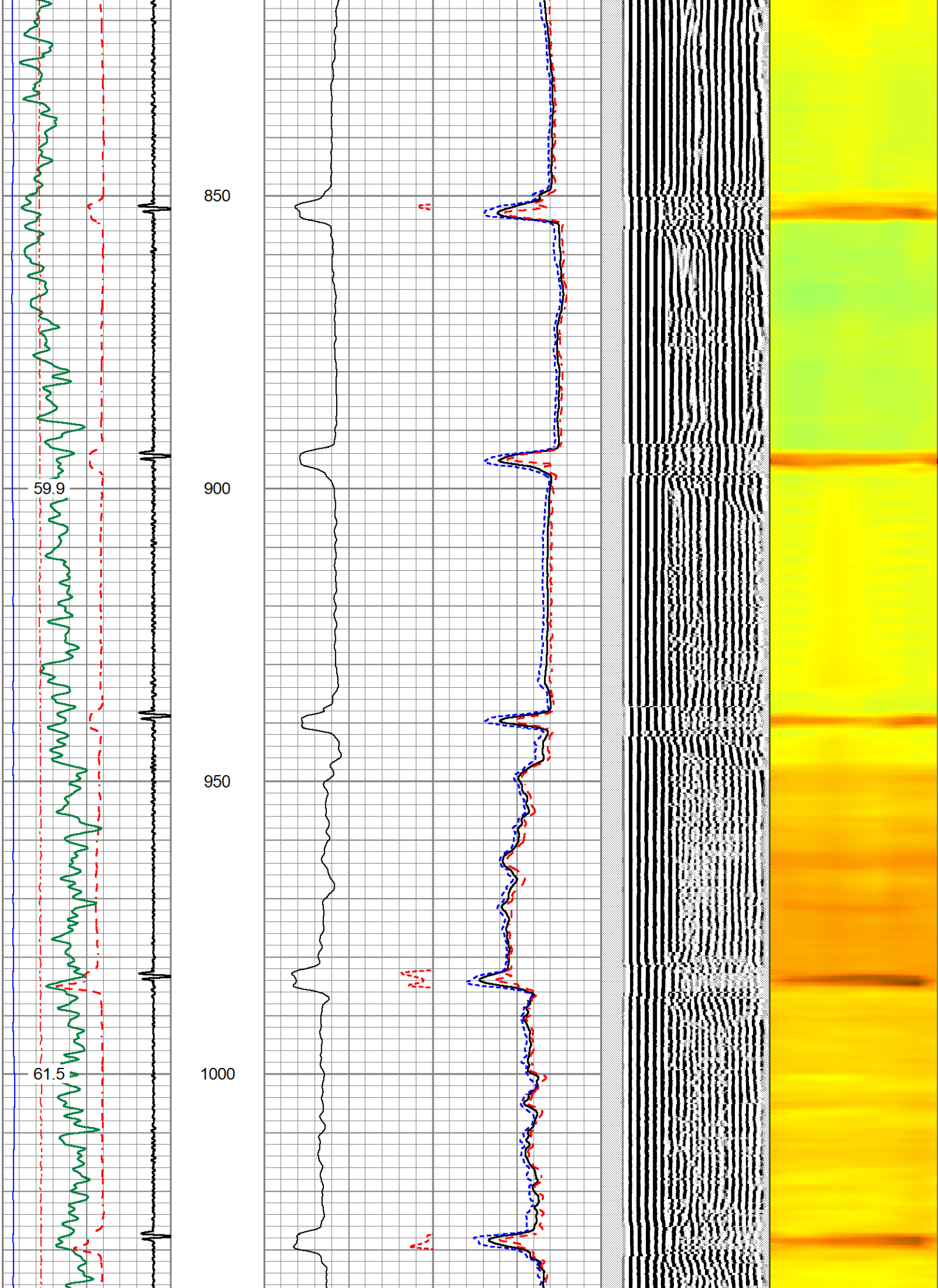
Database File 436695_oxy_overlook2-30_0512334156_20220627_scbl.db
 Dataset Pathname pass14.1
 Presentation Format 1patriotradii
 Dataset Creation Mon Jun 27 09:32:21 2022
 Charted by Depth in Feet scaled 1:240

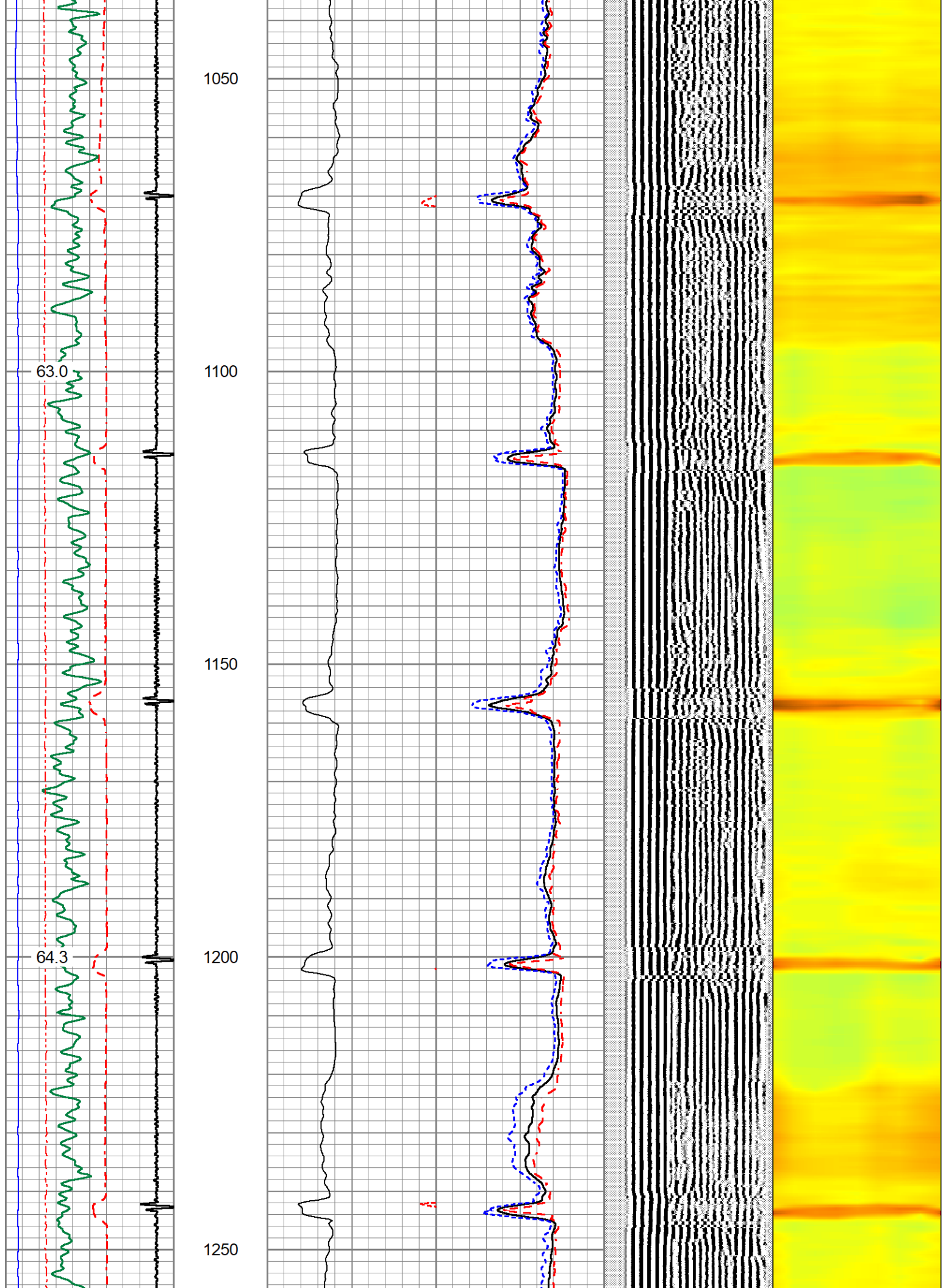
270	TT (usec)	170	0	AMP (mV)	100	0	AMPAVG	100	200	VDL (usec)	1200	1	RADIAL MAP	8
0	GR (GAPI)	150	0	3FT X 5 (mV)	20	0	AMPMAX	100						
9	CCL	-1	0			0	AMPMIN	100						
	LSPD													
-100	(ft/min)	100												
0	LTEN (lb)	2000												
	TEMP													
	(degF)													

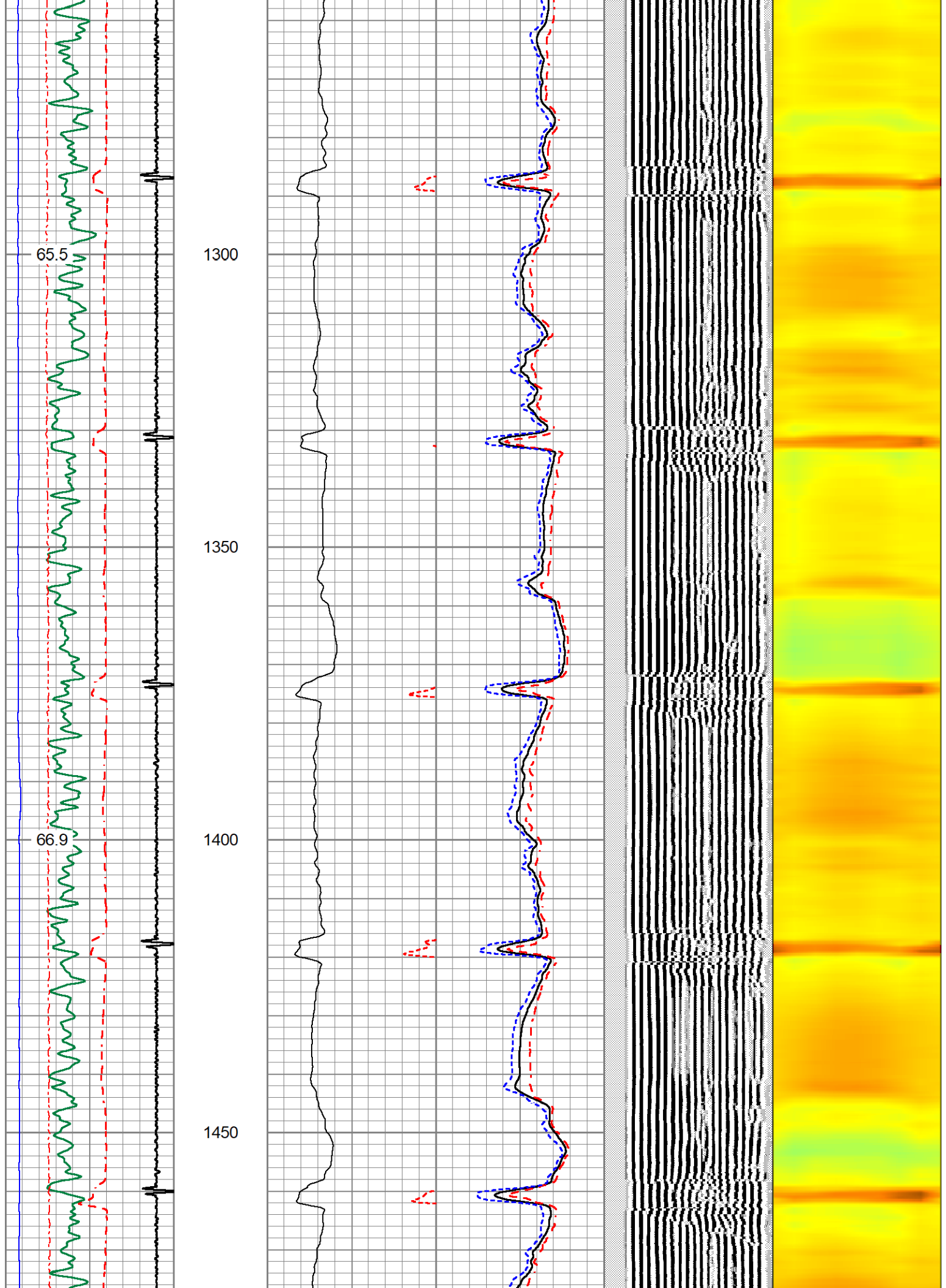


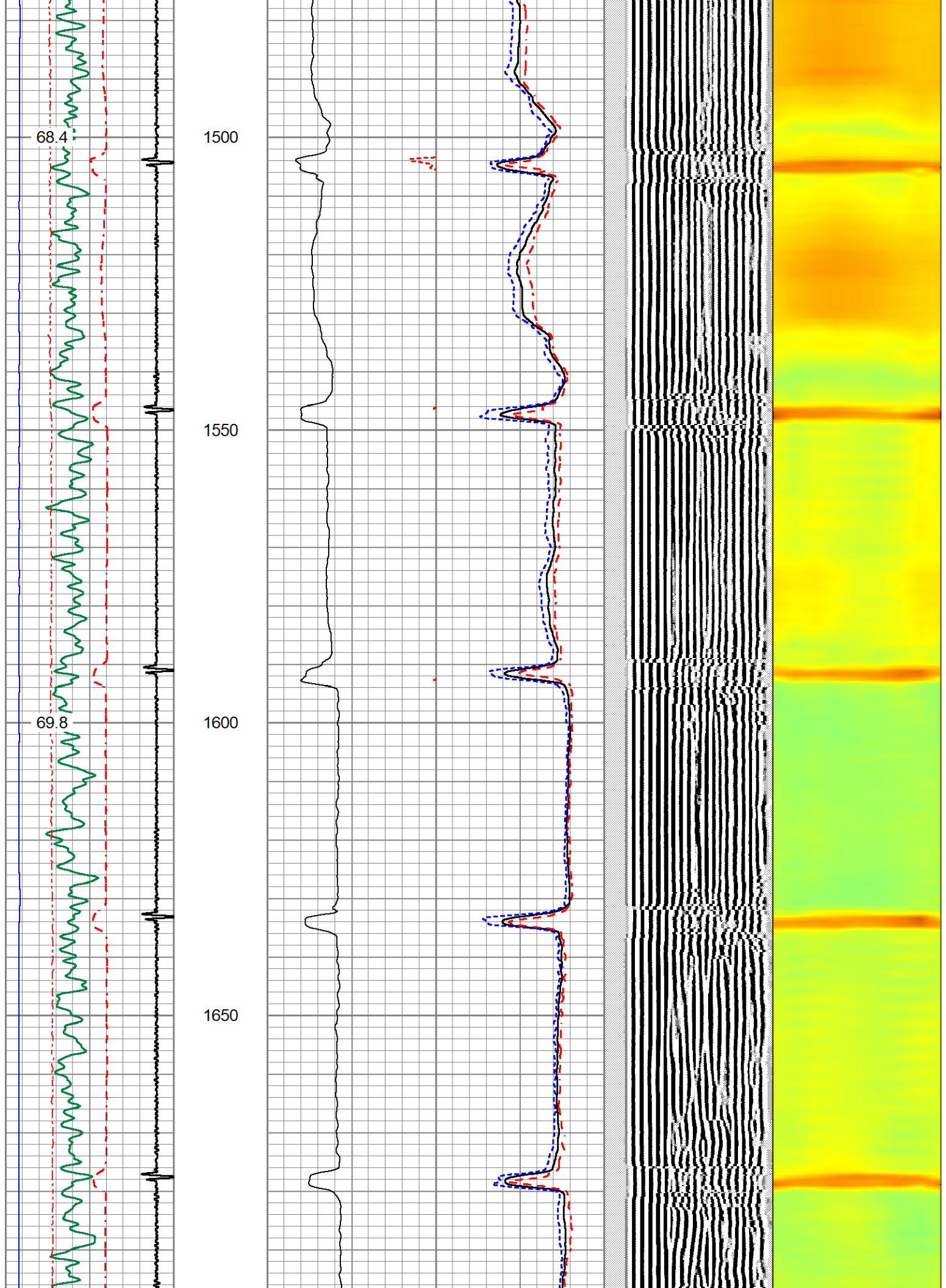


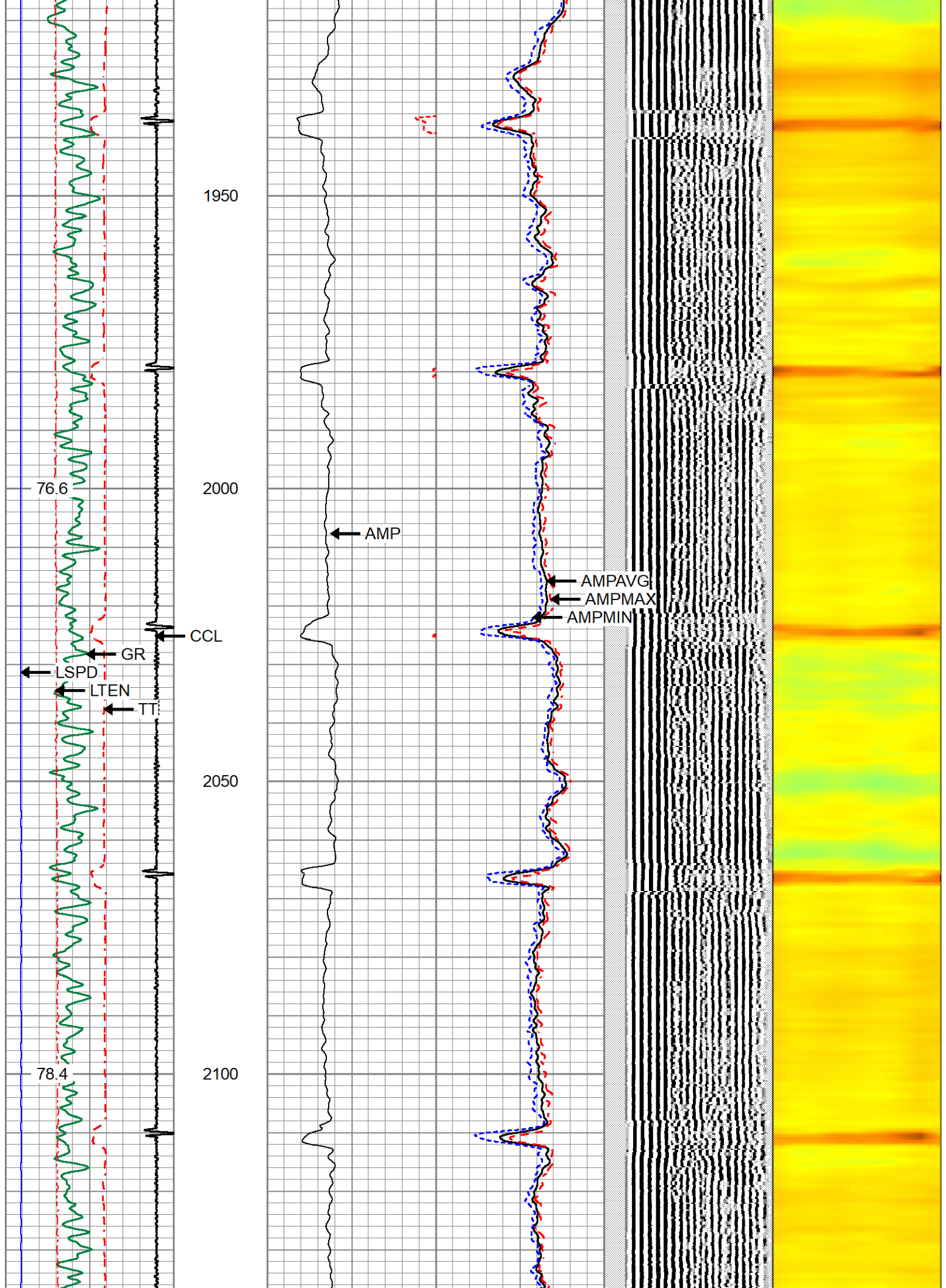


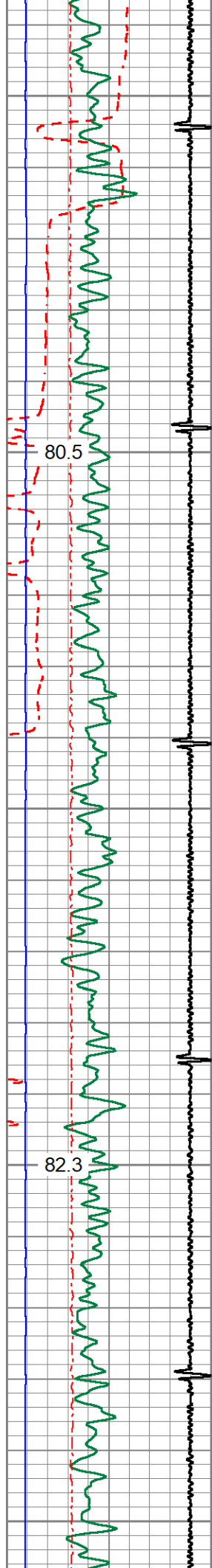












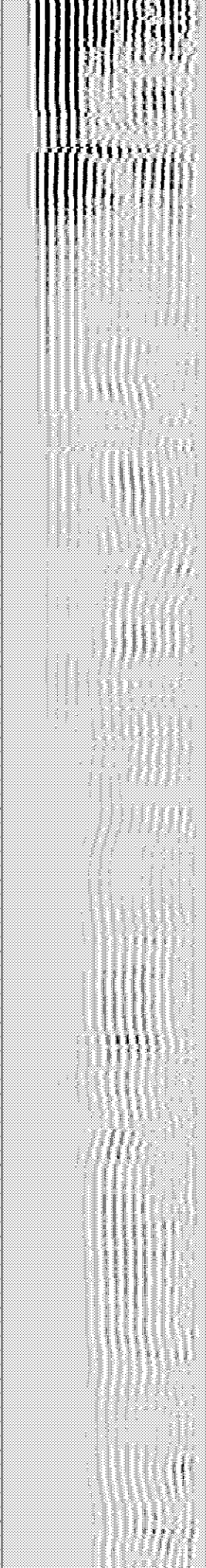
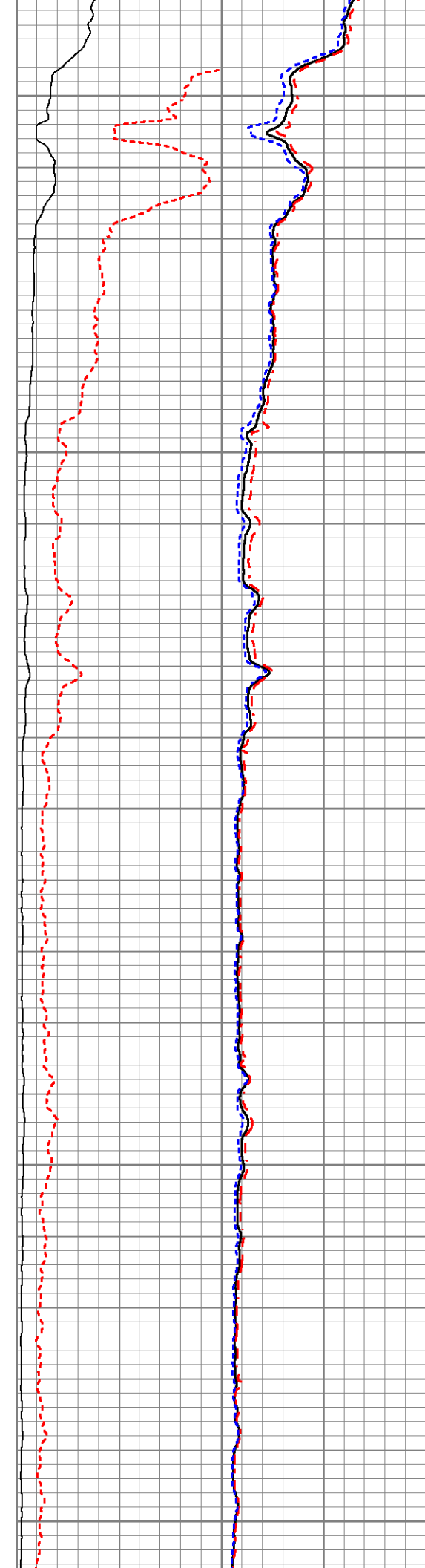
2150

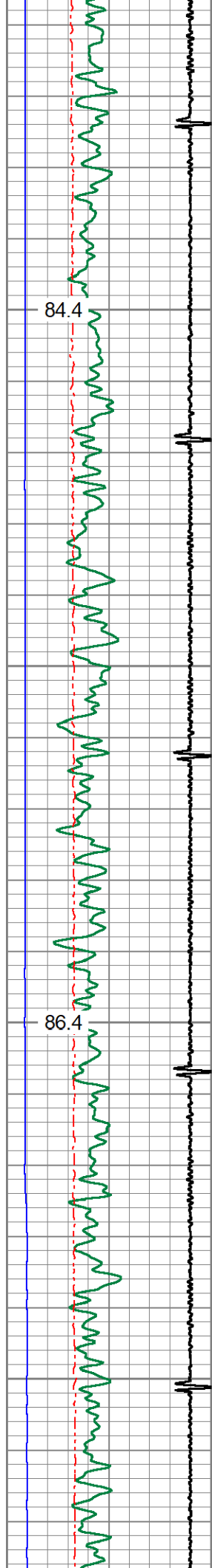
2200

2250

2300

2350



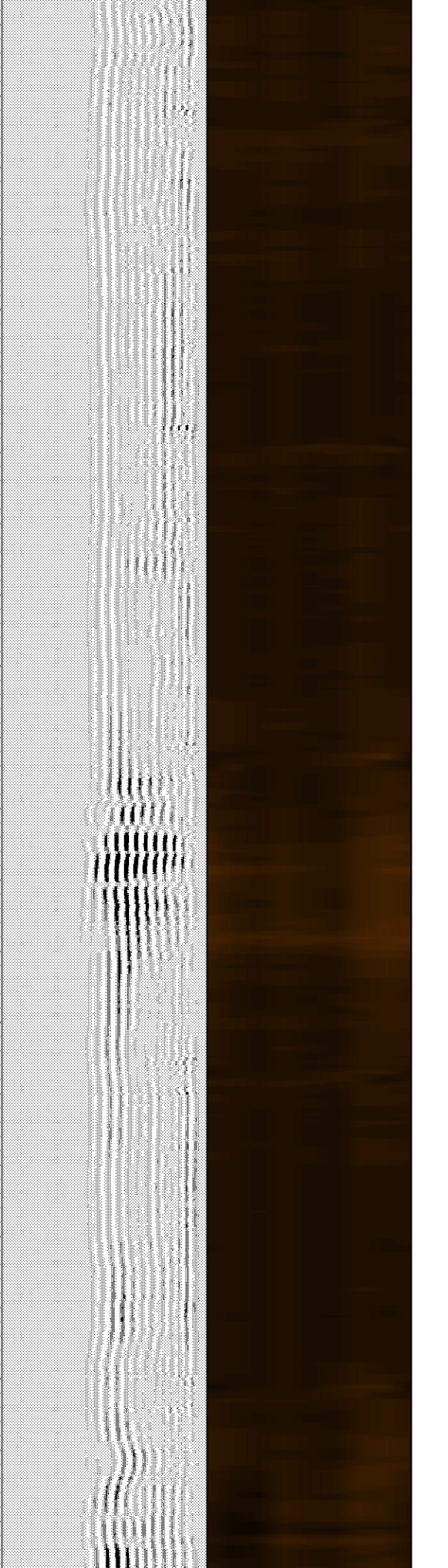
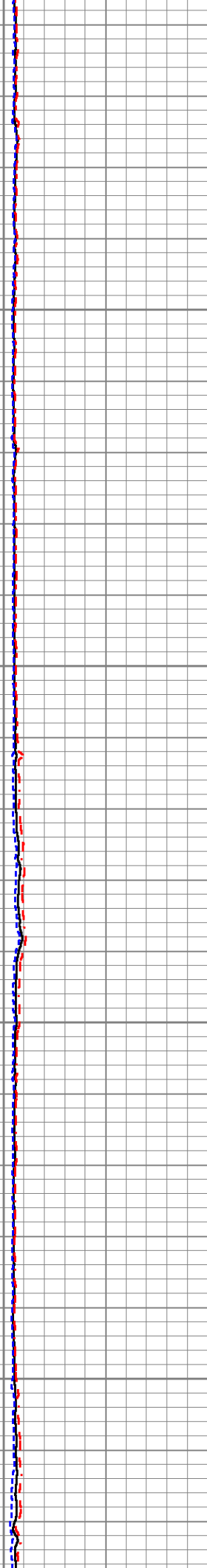
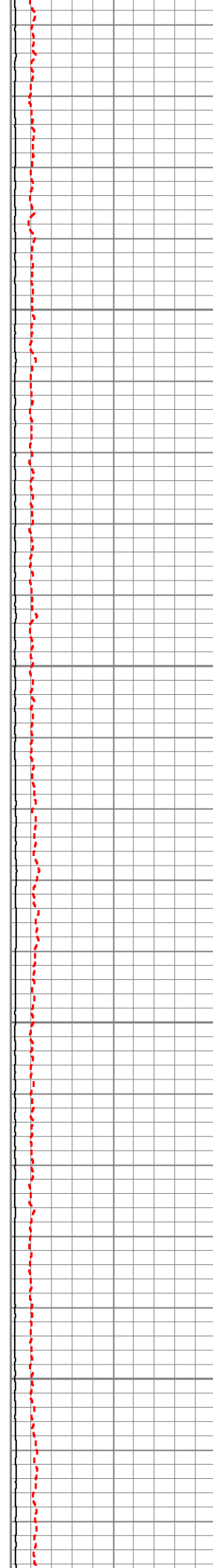


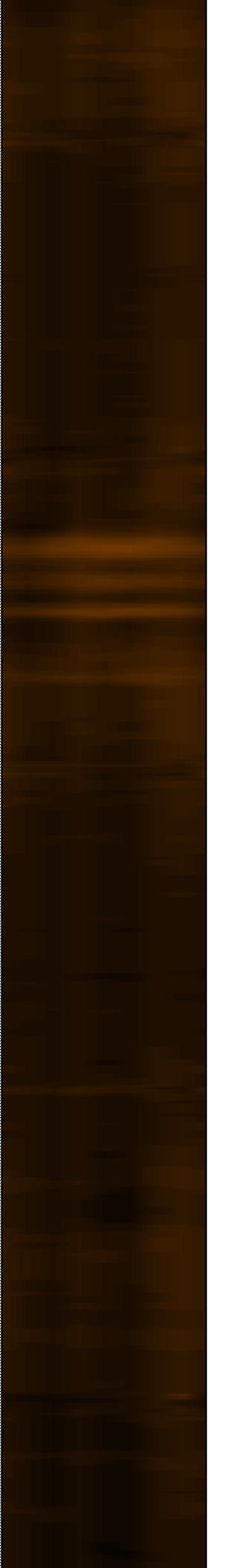
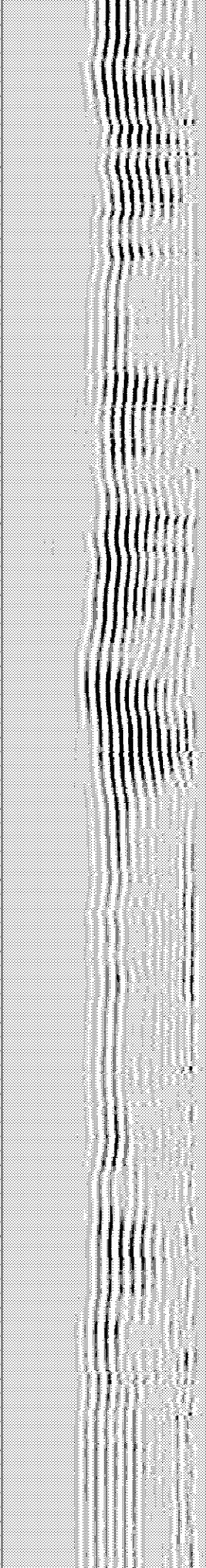
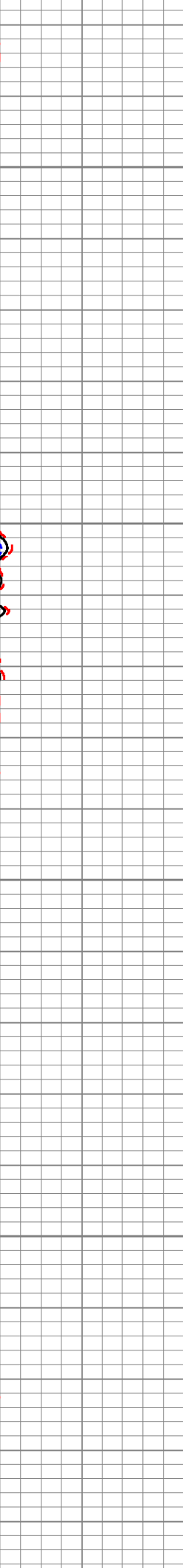
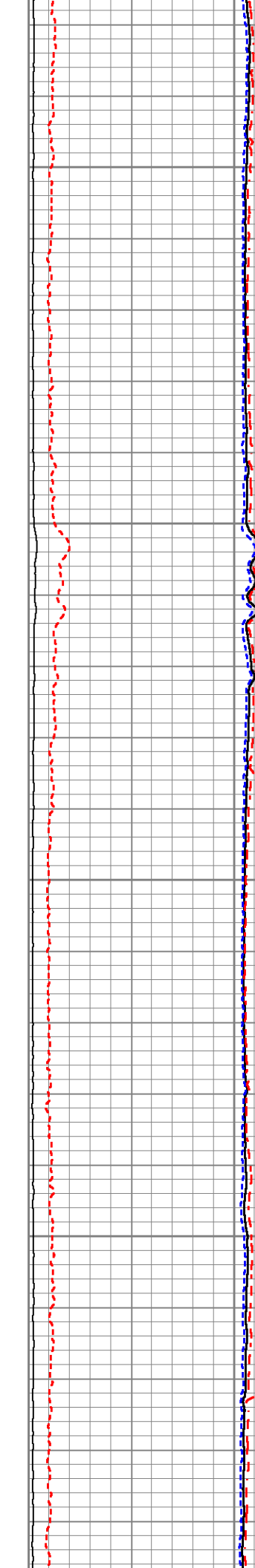
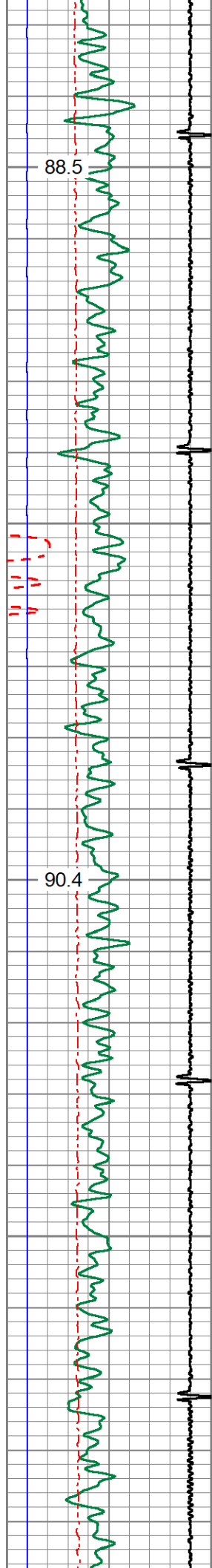
2400

2450

2500

2550





88.5

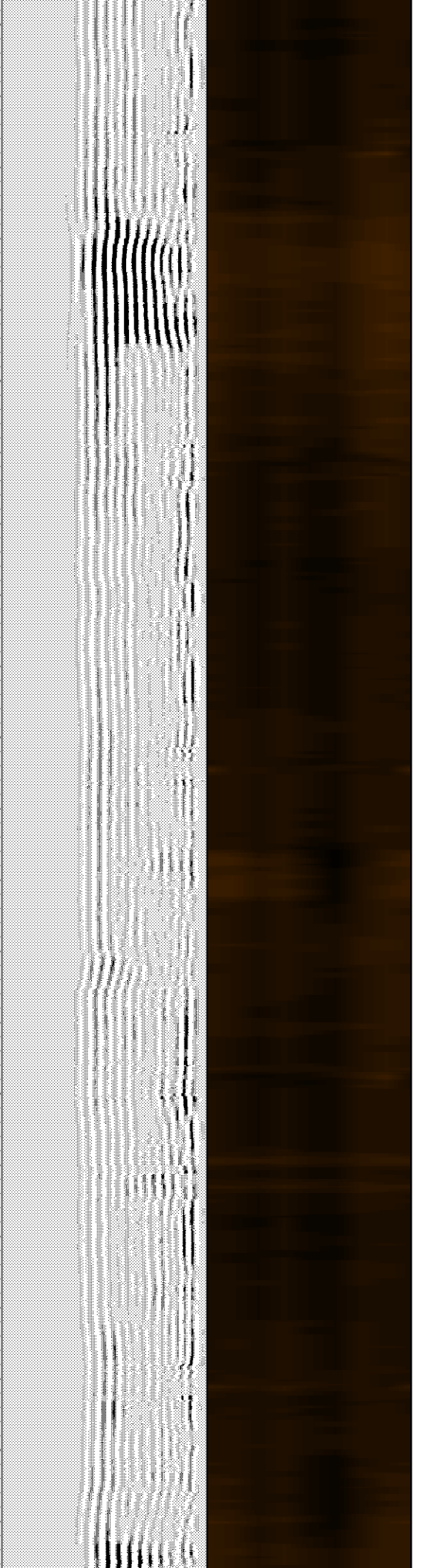
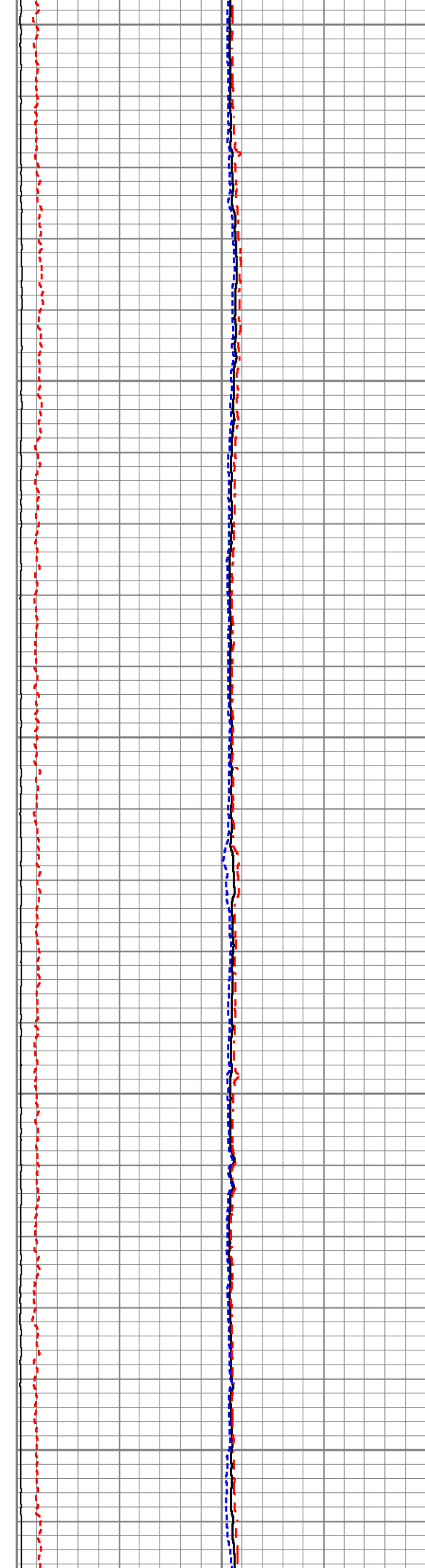
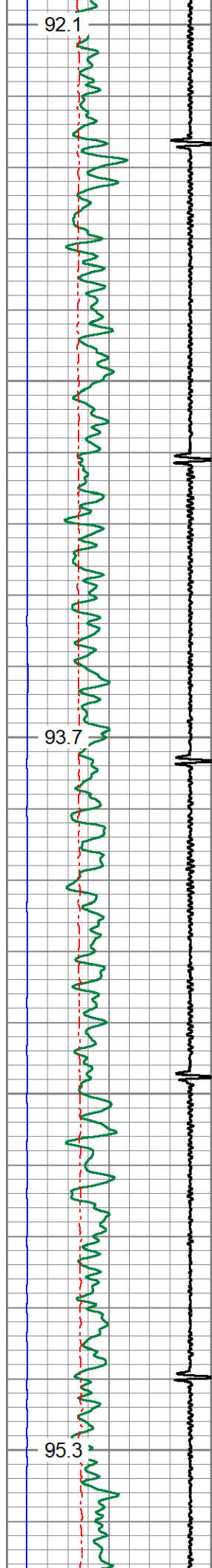
2600

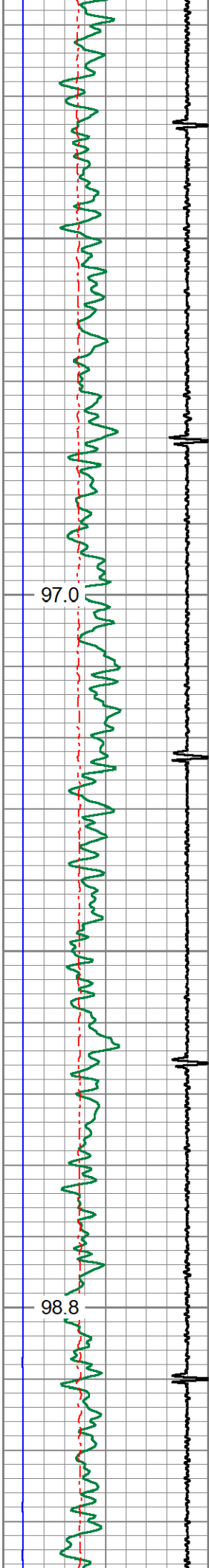
2650

90.4

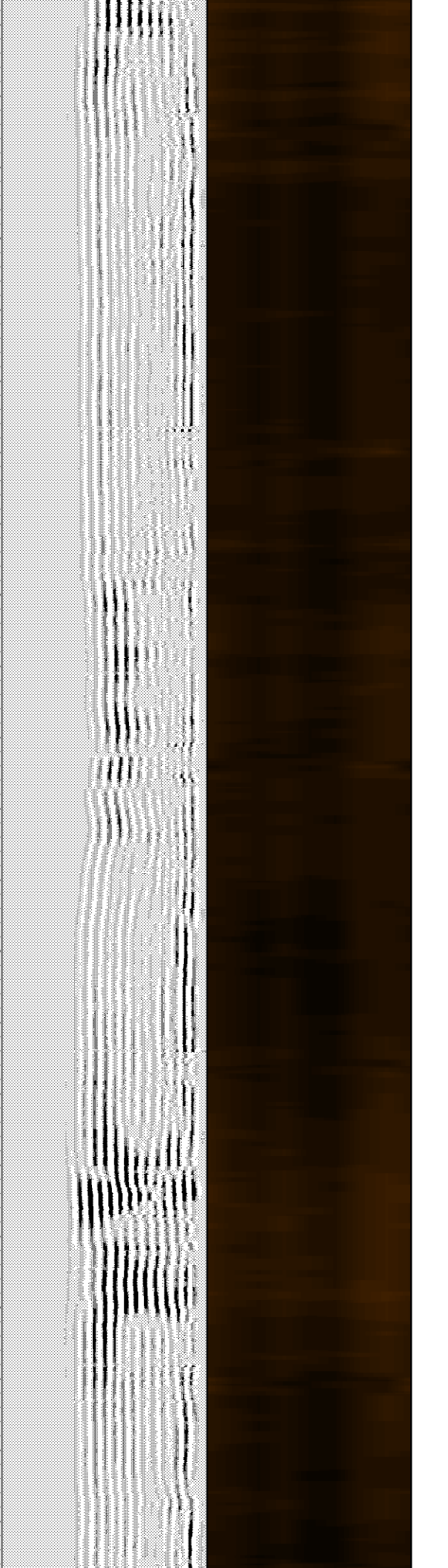
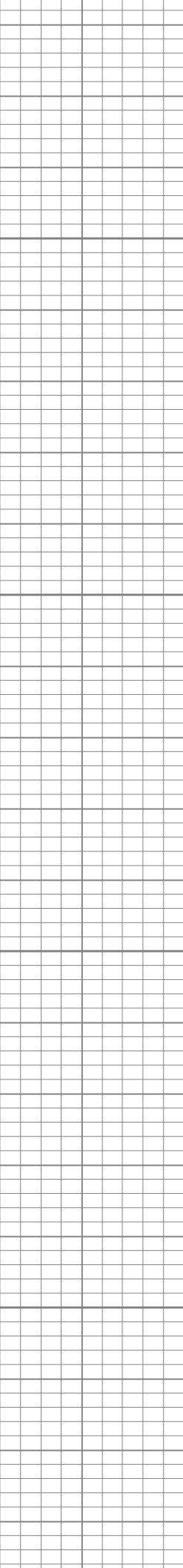
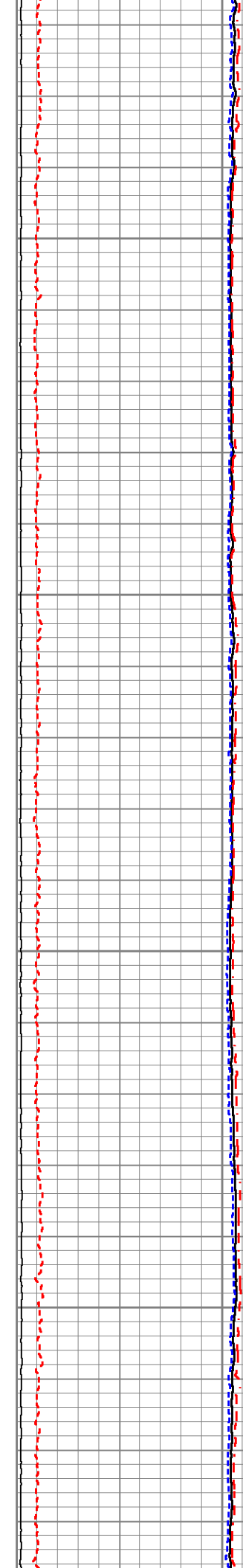
2700

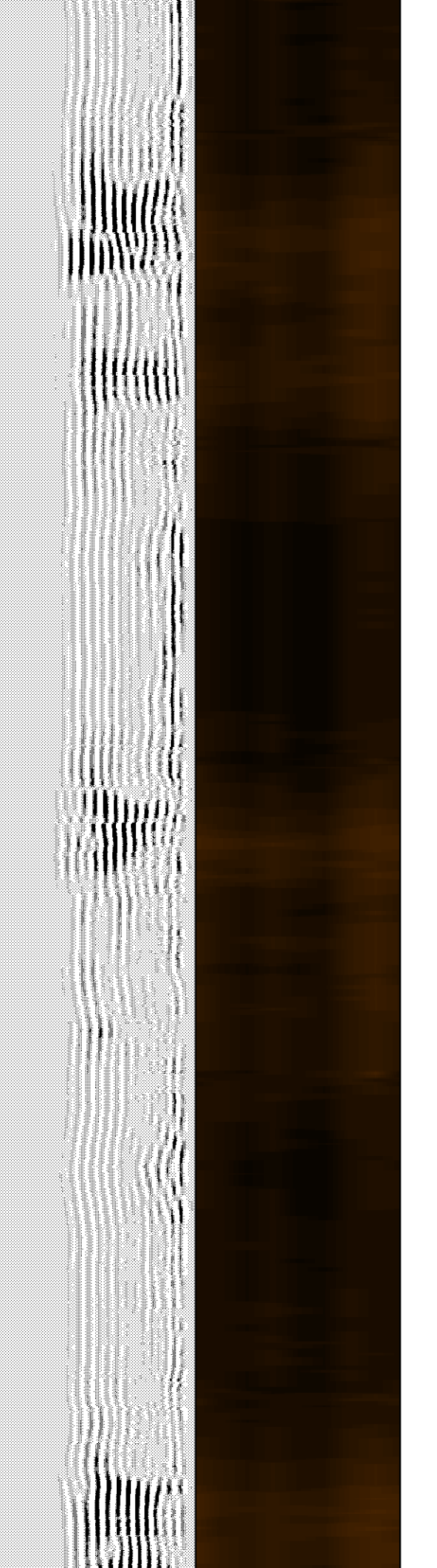
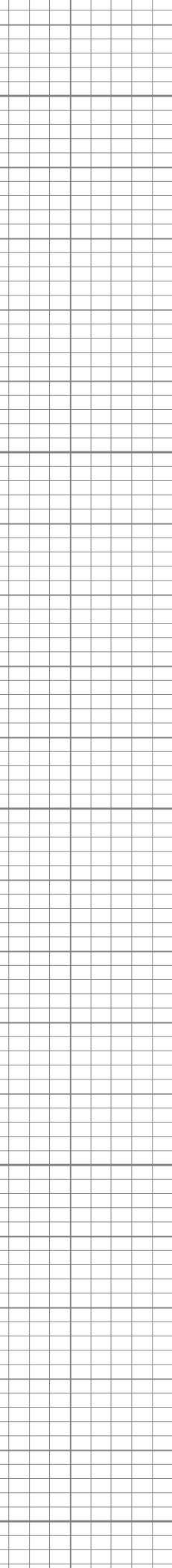
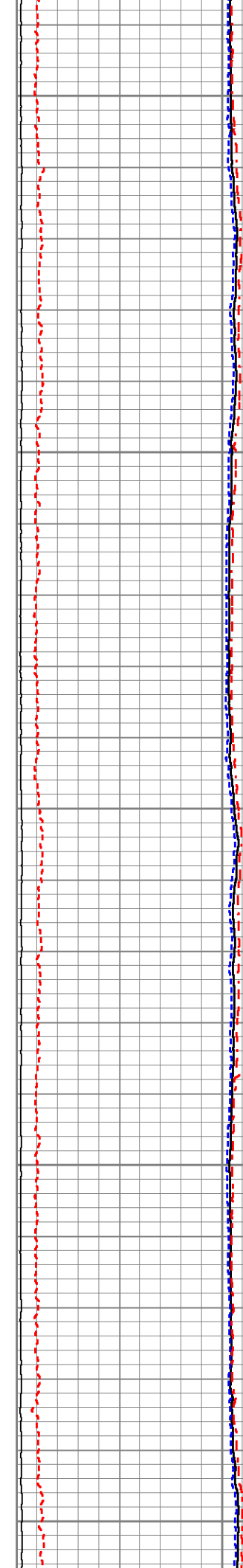
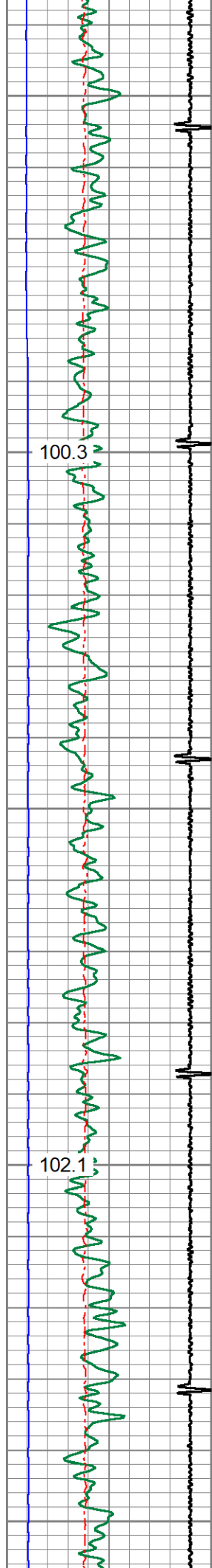
2750





3050
3100
3150
3200





100.3

102.1

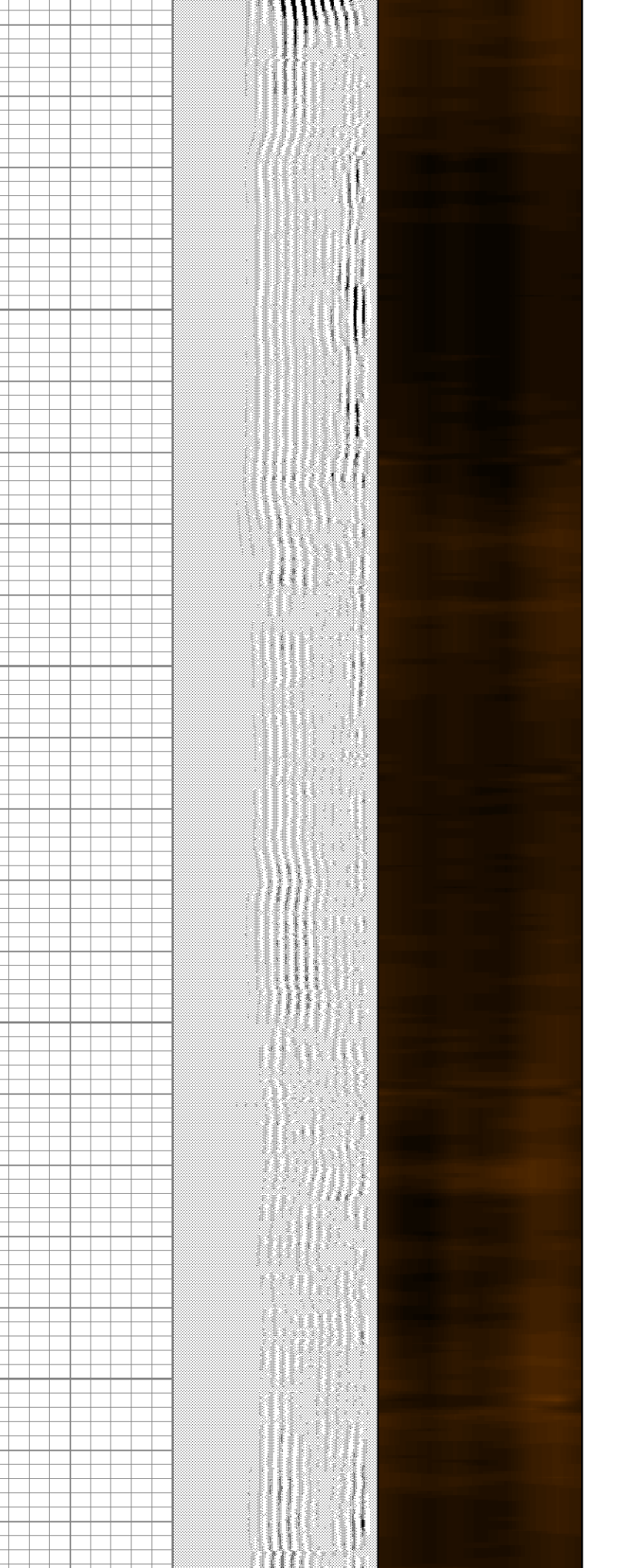
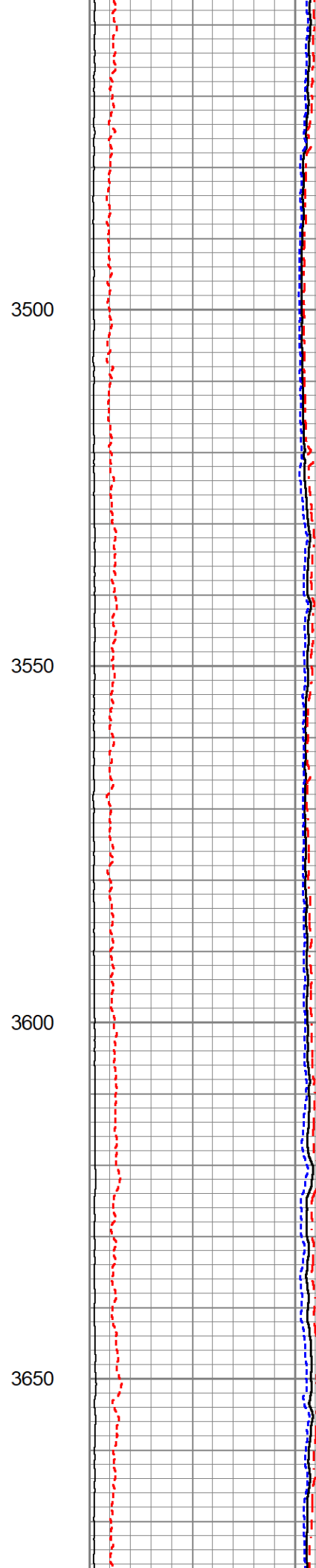
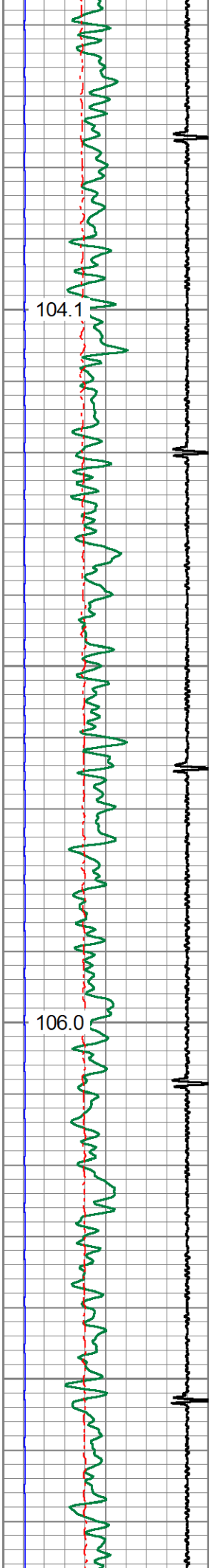
3250

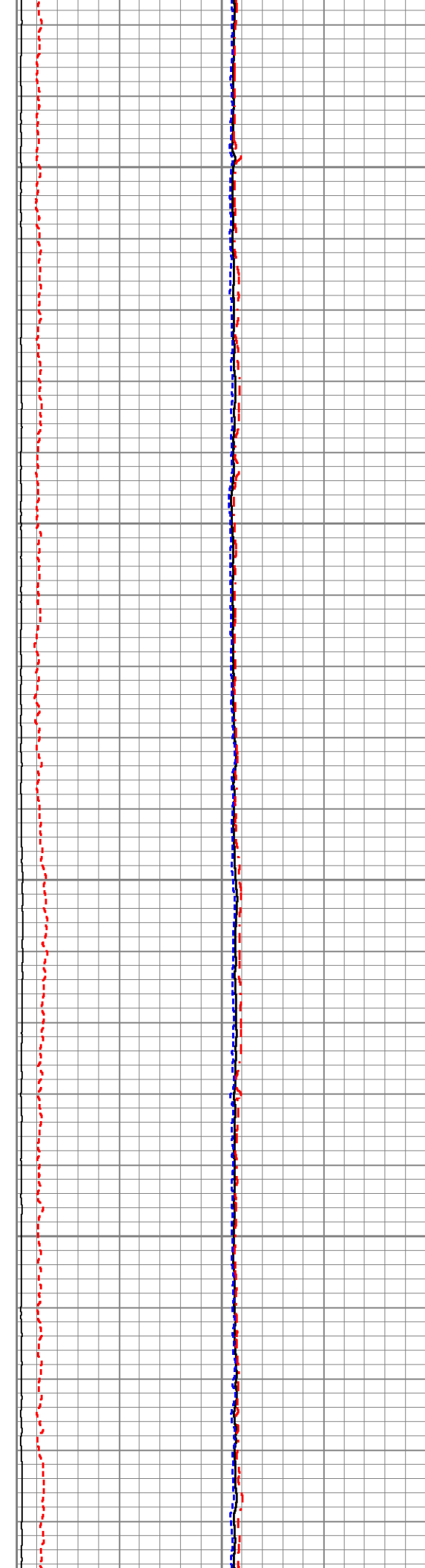
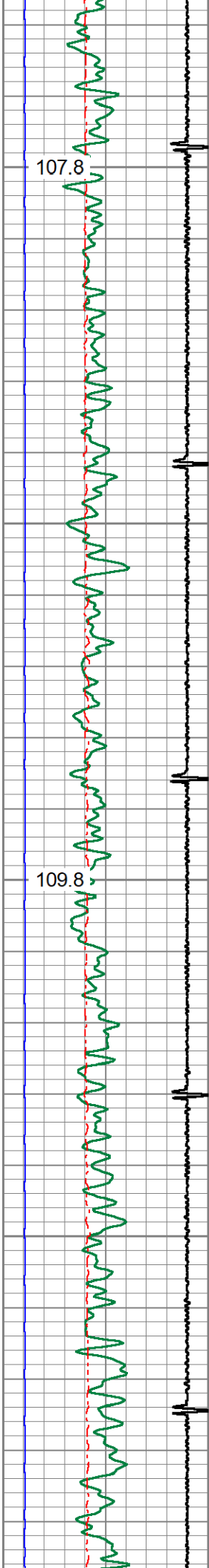
3300

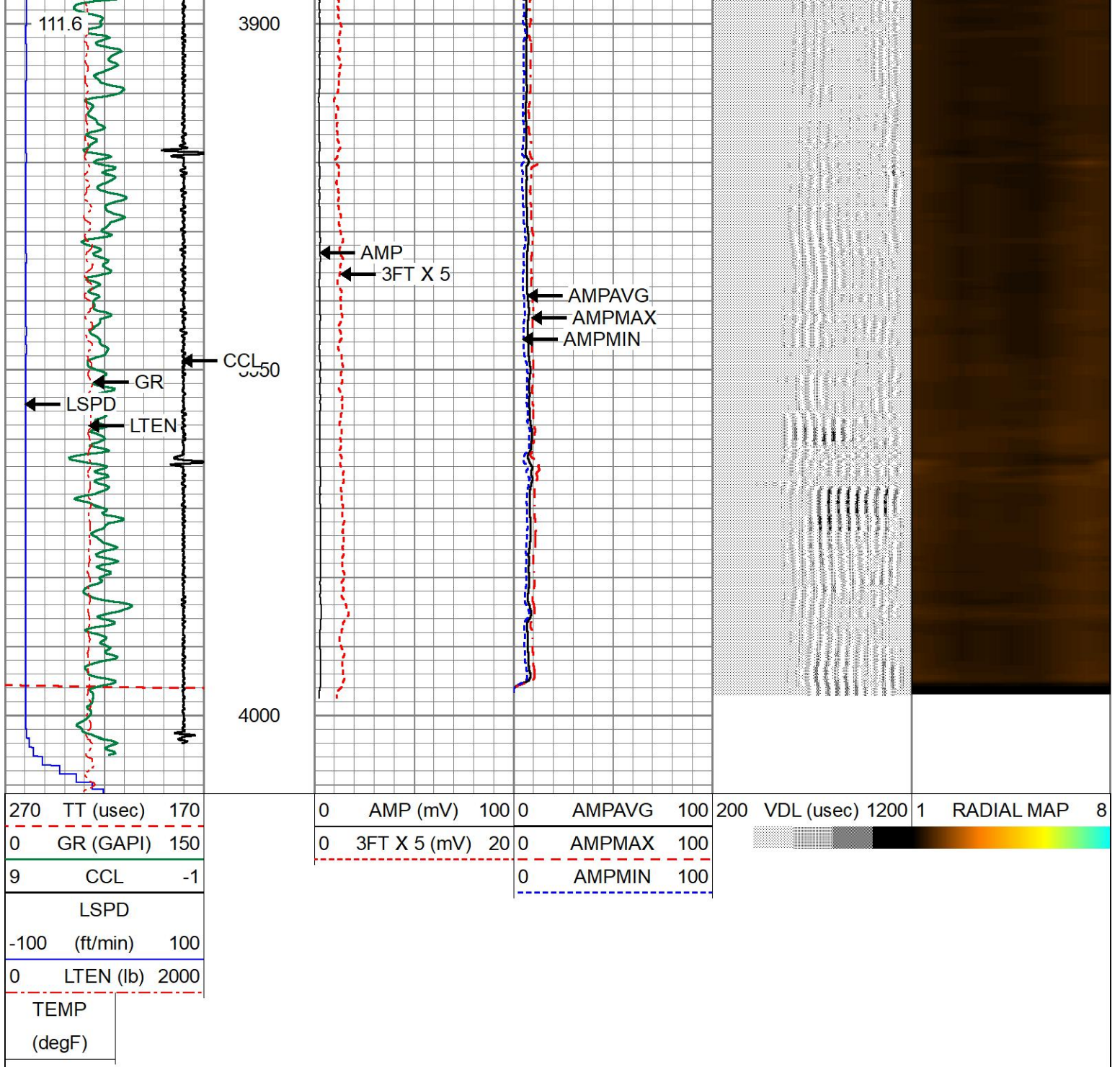
3350

3400

3450

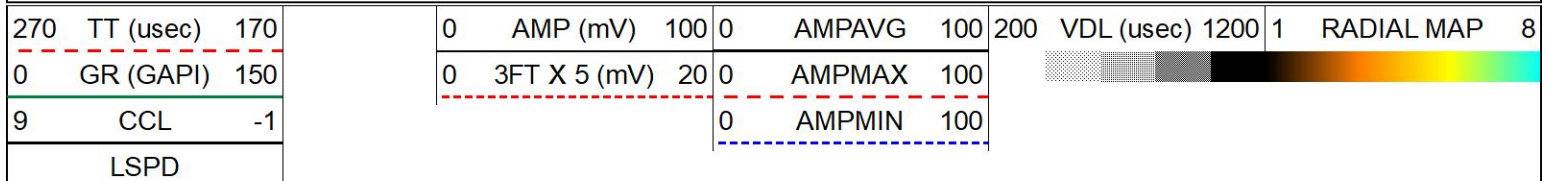






REPEAT PASS

Database File 436695_oxy_overlook2-30_0512334156_20220627_scbl.db
 Dataset Pathname pass9
 Presentation Format 1patriotradii
 Dataset Creation Mon Jun 27 08:16:24 2022
 Charted by Depth in Feet scaled 1:240

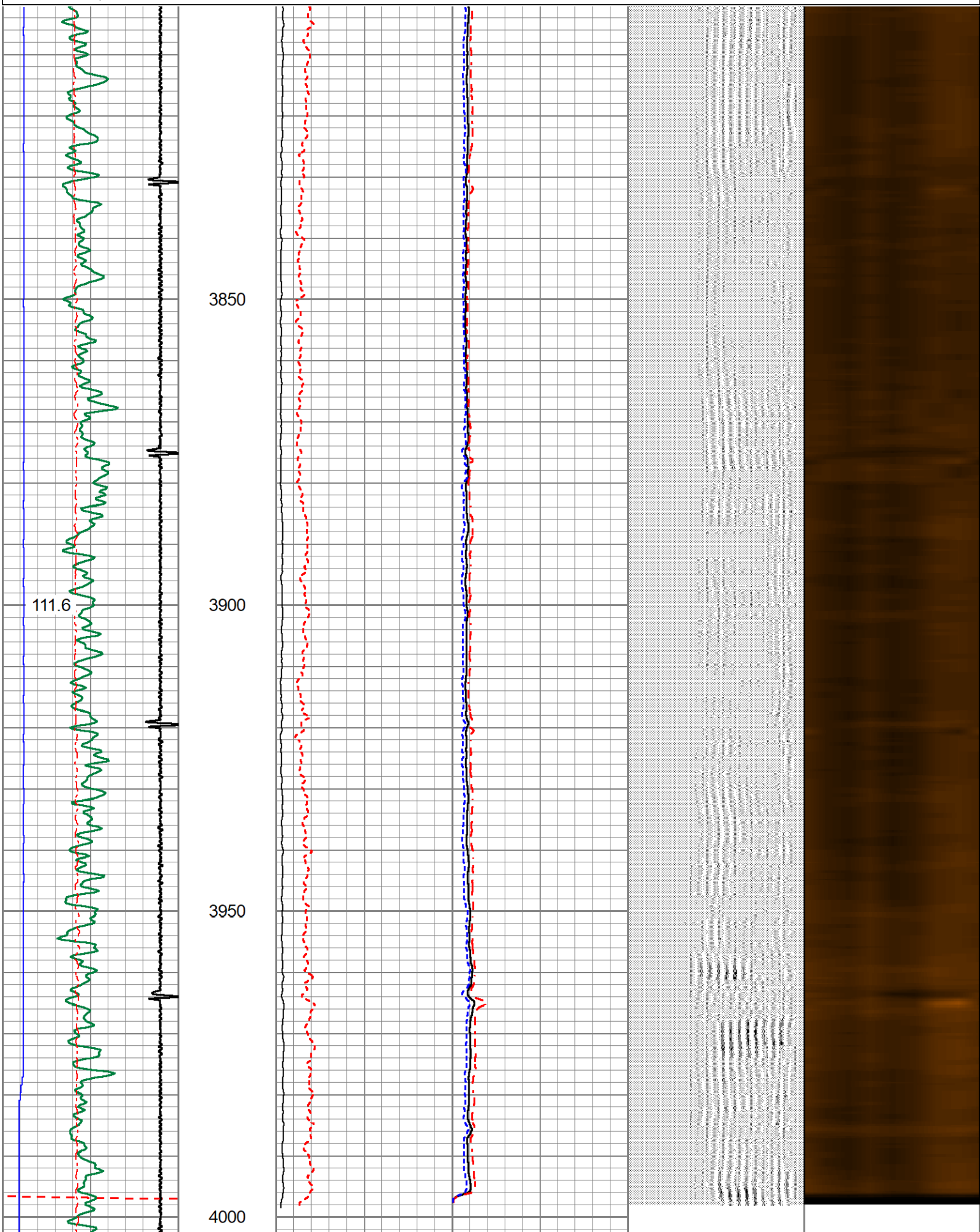


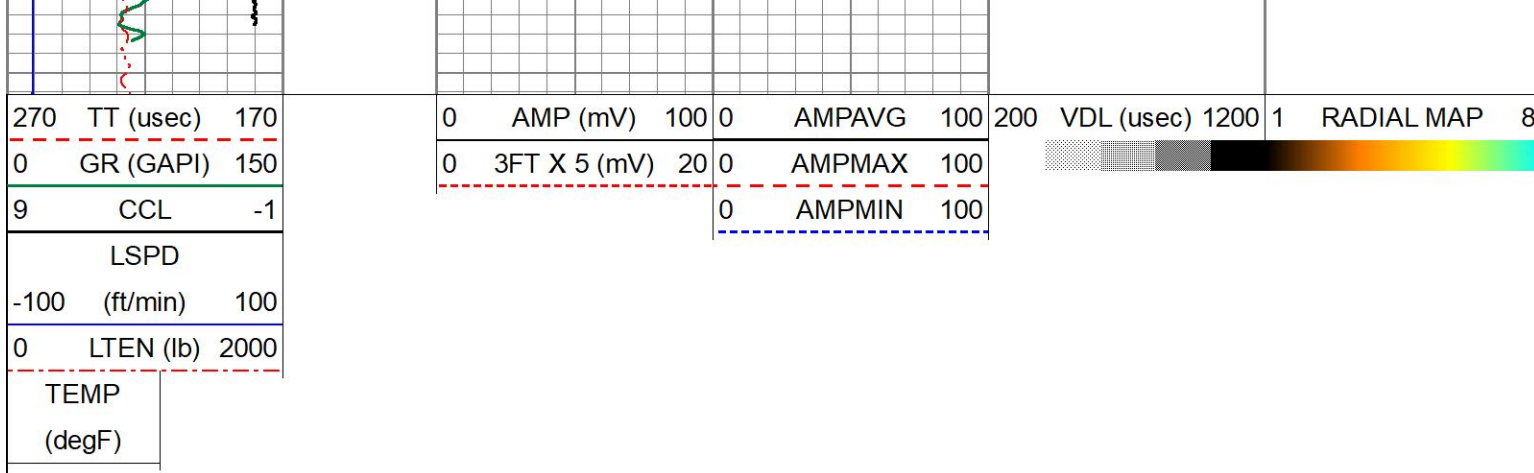
-100 (ft/min) 100

0 LTEN (lb) 2000

TEMP

(degF)





Calibration Report

Database File 436695_oxy_overlook2-30_0512334156_20220627_scbl.db
 Dataset Pathname pass14.1
 Dataset Creation Mon Jun 27 09:32:21 2022

Gamma Ray Calibration Report

Serial Number: 0111
 Tool Model: Tek-Co 2 3/4
 Performed: Fri Apr 29 12:47:17 2022

Calibrator Value: 0.8 GAPI

Background Reading: 0.0 cps
 Calibrator Reading: 1.0 cps

Sensitivity: 0.8000 GAPI/cps

Segmented Cement Bond Log Calibration Report

Serial Number: IBUCO04
 Tool Model: 275 Temp JS

Calibration Casing Diameter: 4.500 in
 Calibration Depth: 805.801 ft

Master Calibration, performed (Derived):

	Raw (v)		Calibrated (mv)		Results	
	Zero	Cal	Zero	Cal	Gain	Offset
3'	-0.008	0.870	1.500	81.196	90.784	2.229
CAL	-0.007	0.524				
5'	-0.010	1.346	1.500	81.196	58.801	2.074
SUM						
S1	0.000	1.159	0.000	81.196	70.054	-0.002
S2	-0.005	1.130	0.000	81.196	71.495	0.376
S3	-0.007	0.987	0.000	81.196	81.738	0.544
S4	0.000	0.970	0.000	81.196	83.699	-0.009
S5	-0.007	0.893	0.000	81.196	90.306	0.593
S6	-0.003	0.912	0.000	81.196	88.753	0.246
S7	0.000	1.060	0.000	81.196	76.583	-0.010
S8	-0.003	1.020	0.000	81.196	79.375	0.235

Internal Reference Calibration, performed (Not Performed):

Raw (v)	Calibrated (v)	Results
---------	----------------	---------

	Zero	Cal	Zero	Cal	Gain	Offset
CAL	0.000	0.000	-0.007	0.524	1.000	0.000

Air Zero Calibration, performed Wed Jan 11 14:45:22 2017:

	Raw (v)	Calibrated (v)	Results
	Zero	Zero	Offset
3'	0.000	0.000	0.000
5'	0.000	0.000	0.000
SUM			
S1	0.000	0.000	0.000
S2	0.000	0.000	0.000
S3	0.000	0.000	0.000
S4	0.000	0.000	0.000
S5	0.000	0.000	0.000
S6	0.000	0.000	0.000
S7	0.000	0.000	0.000
S8	0.000	0.000	0.000

Temperature Calibration Report

Serial Number: IBUCO04
 Tool Model: 275 Temp JS
 Performed: Mon Jun 27 07:33:44 2022

	Reference	Reading
Low Reference:	0.00 degF	0.00 usec
High Reference:	1.00 degF	1.00 usec

Gain: 0.25
 Offset: 0.00
 Delta Spacing: 1



Company	OCCIDENTAL PETROLEUM CORP
Well	OVERLOOK 2-30
Field	WATTENBERG
County	WELD
State	COLORADO
Country	WELD