

# Miller 34-20 Wellhead Line (12319764\_FL): Off-Location Flowline Abandonment

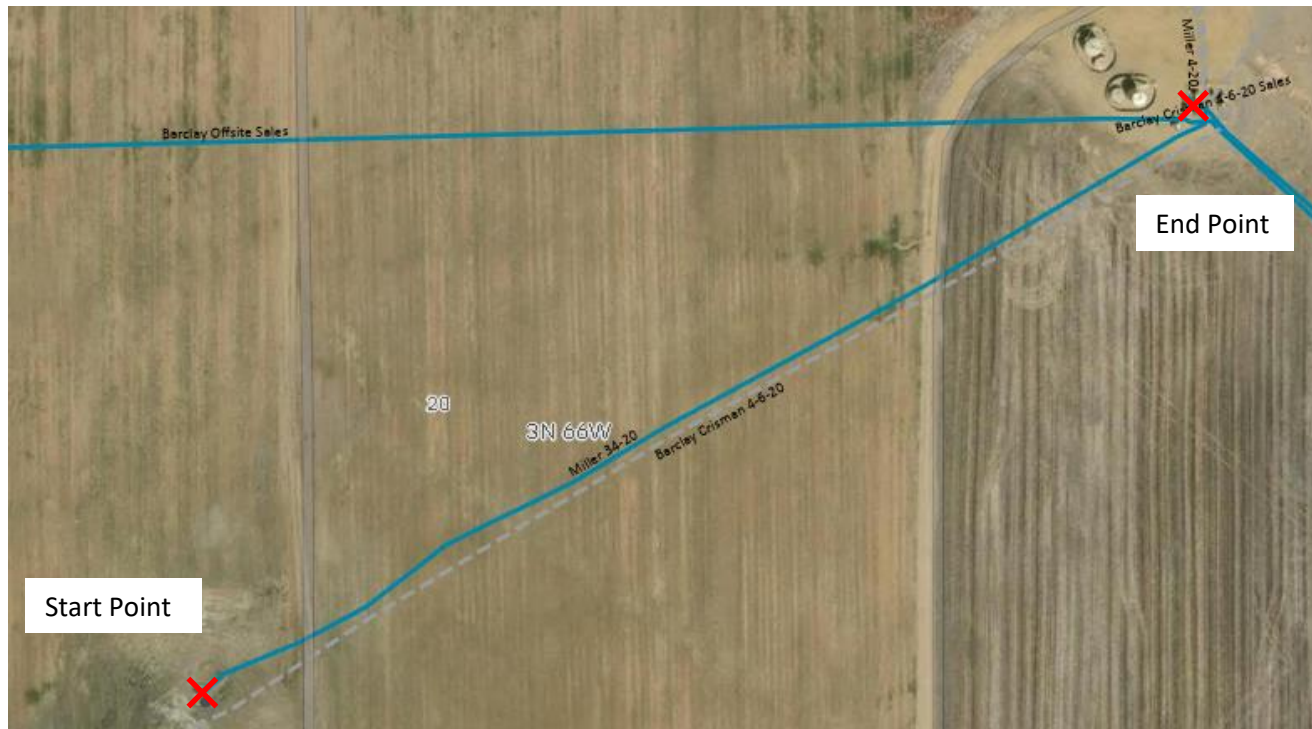
40.205059, -104.799540

SWSE Sec. 20 T3N, R66W, 6th PM

Weld County, Colorado

Crestone Peak Resources (10633)

Flowline Unique OperFeatID	Line Type	Start Location	Start Location Latitude	Start Location Longitude	End Location	End Location Latitude (Cut Point)	End Location Longitude (Cut Point)	Approx. Length to Abandon (ft)
12319764_FL Miller 34-20 Wellhead Line	Multiphase	Wellhead	40.205059	-104.799540	Separator	40.206502	-104.796337	1050



## Site Investigation Points

✗ Visual Inspection and Soil Sample